

THE AUCTION EXCHANGE[®] And COLLECTORS NEWS

\$150

ANTIQUES • COLLECTIBLES • ESTATES • FARM • REAL ESTATE • COMMERCIAL

www.eauctionexchange.com

May 12, 2026

Vol. 49 No.23

ACROSS THE AUCTION BLOCK

Gorham sterling flatware set sparkled at \$6,500



Above: A 127-piece Gorham Manufacturing Company sterling flatware set in the "King Albert" pattern drew a final bid of \$6,500.

BY NANCY KELLY

LESLIE, Mich. — Brad Stoecker/Epic Auctions offered an exceptional variety of quality items in their recent virtual online auction. The outstanding photos that accompanied the listings enhanced the experience for the online bidders. Prices here do not include the buyer's premium.

The star item of the day was the 127-piece set of Gorham Manufacturing Company sterling flatware in the "King Albert" pattern, introduced in 1919. Presenting service for 12 plus numerous carving and serving utensils all housed in a felt-lined wood box, this attractive set drew a final bid of \$6,500. A smaller set of 59 pieces of Gorham Manufacturing Company sterling flatware in the

Right: This Kern's Cream of Michigan round lithographed tin serving tray featuring their golden beverage along with an assurance of purity illustrated with a trademark flying dove drew a final bid of \$1,000.

"Greenbrier" pattern, introduced in 1938, also proved popular, earning a final bid of \$3,000.

A Kern's Cream of Michigan round lithographed tin serving tray from C. Kern Brewing Company (Port Huron, Michigan) featured the image of a bottle of their golden beverage along with an assurance of purity signified by a trademark flying dove. The tray itself was produced by The H.D. Beach Company (Coshocton, Ohio), circa 1905-1909. Measuring 12 inches in



diameter, this keepsake from the past drew a final bid of \$1,000.

Two Art Nouveau lithographed Vienna Art plates proved popular. The 10-inch diameter Anheuser-Busch beer advertising image fea-

tured a "Viennese Maiden" or "European Beauty" with long flowing chestnut colored hair. It was produced circa 1905-1915 and the stamp on the back read "Anheuser-Busch

See Gorham Page 10

FEATURE

French toy maker helped promote famous autos

BY LARRY LEMASTERS

CIJ is the acronym for Compagnie Industrielle du Jouet, which translated means "Manufacturing Company of Toys". Founded by Fernand Migault in Paris, France, in 1920, CIJ

quickly became a classic French brand of diecast metal toy vehicles. The original name of the company was Migault S.A., but when Migault's cousin, Marcel Gourdet, joined the toy company, the name was changed to CIJ.

Gourdet helped to greatly expand Migault's

company by bringing with him his metals workshop in Briare, France. Briare has always been a famous French manufacturing location because it sits on the Briare Canal, which unites with the Loire River and then with the Seine, which goes through Paris, allowing easy shipping of goods and merchandise. This shop remained the leading factory for CIJ until the shop burned down in 1929. When the factory burned, the Bapterosses family (a wealthy, industrialist and business family in France) offered the capital to rebuild the factory. CIJ moved its headquarters to Paris, but the major production of the company continued in Briare.



Above: Produced by CIJ, circa 1962, this 1:43rd scale Renault Estafette police van is made of zamac and is valued at \$102.

At its greatest height, CIJ employed more than one hundred workers at this factory in Briare.

In 1919, André Citroën founded the "Automobiles Citroën" manufacturing company, and in March 1919, Citroën produced its first automobile, a Citroën Type A, which filled his company's dreams of producing a



Above: A Renault Camion Grue Crane truck with original box. Produced in the 1950s by CIJ, this crane is valued at \$82.

"lighter car of good quality, but made in sufficient quantities to be priced enticingly." Citroën Type A not only launched one of France's iconic automobile com-

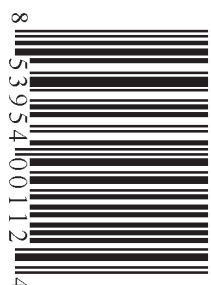
panies, it also became a stepping-stone to help launch CIJ into toy history.

Desiring to make his

See Toy maker Page 4



Above: Produced by CIJ in the 1950s, this GMC CCKM Pompiers is a French fire workshop truck. Produced in 1/43rd scale, this truck is valued at \$50.



SINCE 1978 THE WEEKLY AUCTION & COLLECTORS GUIDE FOR THE GREAT LAKES REGION



The Super Auction

Saturday, May 23rd 10 am - 3 pm

5121 Michigan Ave., Tipton, MI 49287 zone 5

Inspection: Day before auction noon to 4:00 pm and auction day 8:30 am



Directions: The Super Auction is located in The Irish Hills of Michigan on Michigan Ave (US-12). Our facility is 6 miles west of Clinton, MI & east of Brooklyn, MI. Approx. 10 miles east of Michigan International Speedway. * Michigan Avenue & US-12 are the same road. You can hold your breath and drive through Tipton on Michigan Ave, so look for signs & flags on the south side of the road.

Featuring

Classic Car and Automotive Collection * Unbelievable Estate Sports One Owner Collection * Vintage and Classic Motorcycles * Two Great Sessions of Antiques and Furniture out of Ann Arbor Mansion * Militaria History Session * Comic Book and Pop Culture Collection * Fun One Owner Mid Century Modern Collection * Estate Collection of Audio, Electronics and Record Collection * Vintage Chris Craft Boat * 2016 Simplicity 4x4 Legacy Loader Tractor * Lawn and Garden * Toys and Fun Stuff * Much More.



Check the website for the schedule and hundreds of pics - TheSuperAuction.Net

Feature Auction Companies

- THE SUPER AUCTION OWNER - DAVID HELMER 734.368.1733
- MATHIAS DONAT - AUCTIONEER & MANAGER 734.740.8965
- BRAUN AND HELMER AUCTION SERVICE - DAVID HELMER, BRIAN BRAUN, LUKE & CALEB HELMER 734.368.1733
- JOSEPH SAINTE AUCTIONS 419.450.2515
- TIM NARHI - AUCTIONEER
- EPIC AUCTIONS - BRAD STOECKER 734.320.9627
- PETER GEHRES AUCTIONEER
- CLETUS DETWEILER - AUCTIONEER
- BELHORN AUCTIONS

GENERAL TERMS: Terms: Cash, Check (Payable to The Super Auction, maximum of \$2500 without bank letter of credit or prior approval), Visa, MasterCard, Discover paid in full day of auction. 13% Buyers Premium with 3% discount if paying with cash or check plus local sales tax. Each auction company is responsible for items sold during their session(s) and unless stated otherwise all items sold "as-is, where is."





Tim Narhi Auctioneer & Associates LLC
- Auction Service Beyond the Call

SIMULCAST AUCTION

Live bids will take precedence over online bids - Join us in person for the full auction experience!



James & Kathie Mae Layman Estate Part 1

Bid Online 5/27/2026 - 6/3/2026
Bid live in person: Wed, Jun 3, 10:00 AM
10250 Eagle Rd Davisburg 48350

Sell From Our Location or Yours
WWW.NARHIAUCTIONS.COM

info@narhiAuctions.com • (810) 266-6474

JAMES & DONNA SMITH ESTATE AUCTION

FRIDAY, MAY 15, 2026 - 11AM

LOCATION: 360 S. STATE ST.

DIRECTIONS: The auction is located just South of Downtown Otisville, MI on M-15 (S. State St.) Watch for auction signs.

OTISVILLE, MI 48463 ZONE 6

AUCTIONEER'S NOTE: A good variety of personal property to be sold - Something here for everybody!



LIVE AUCTION FEATURES: 2014 Chevy Sonic, 1994 Jaguar XJS Convertible, Trillium 4500 10' Camper, 5' x 10' Tandem Axle Enclosed Trailer, E-Z-GO Gas Lifted Golf Cart w/ Rear Seat that Converts into Flatbed, Bolens Iseki Diesel G174 Garden Tractor w/ Front Blade, John Deere X340 Riding Mower, Outdoor Equipment & Garage, Variety of Backup Power Supplies, New "Suitcase" Solar Generator, Lots of New in Box Items, Furniture, Antiques, Collectibles, Glassware, Household, *Plus much More!*

Go To: RowleyAuctions.com To View Catalog, Listings and Large Photo Gallery!



Rowley
AUCTIONS
810-724-4035
www.RowleyAuctions.com

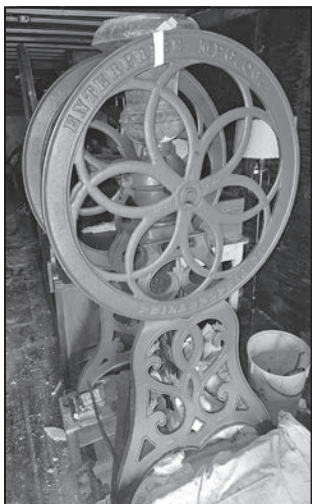
WEBER PERSONAL PROPERTY AUCTION

SATURDAY, MAY 30, 2026 - 10AM

LOCATION: 6846 EMMETT RD.

YALE, MI 48097 ZONE 6

DIRECTIONS: The Auction is located South of Downtown Yale, MI and Approx. 8.5 Miles North of I-69 Exit #184 on M-19. Watch for auction signs.



Auctioneer's Note: Barns, Semi-Trailers, and Storage Areas Packed Full! Two Auctioneers Will be Selling Throughout the Day. Great Variety in this Auction. There is Something Here for Everybody's Use or Collection!

LIVE AUCTION FEATURES: 1965 Ford Cab Over Semi Truck, 2005 Chrysler Sebring Convertible, 2008 GMC Sierra 2500 HD 2WD w/ 6.6L Duramax Diesel, 1901 Oldsmobile Replica Car, 1980 Ski-Doo Citation 3500 Snowmobile, 2003 Honda Sportrax 300EX ATV, 1950 GMC Bus Coach, 1952 ABC Aluminum Super Coach, 1954 Owosso 24' Aluminum Travel Camper Trailer, 1975 Nomad Vintage Camper, Hunting Related, Antiques & Collectibles, Ditch Witch/Trencher, Frontier LR1072 Landscape Rake, Concrete Finish Trowel, 4' Cultivator, Equipment, 1995 American Pace Dual Axle Enclosed Trailer, Dual Axle Open Trailer, Fruehauf Semi-Trailer, Lawn Trailer, Tools, **Plus Much More!**

Go To: RowleyAuctions.com To View Catalog, Listings and Large Photo Gallery!

Rowley
AUCTIONS
810-724-4035
www.RowleyAuctions.com

Toy maker

FROM PAGE 1

company name better known, Citroën, himself, contacted Fernand Migault at CIJ and entered into an exclusive contract whereby CIJ would make either metal ware or wooden Citroën model vehicles, and all of the distribution for these early scale model cars would be through authorized Citroën dealerships. Two of the Citroën models were the 1:20th scale la 5 CV Trèfle and the 1:20th scale la B14 Citroën. While CIJ designed and produced the Citroën models, all of the credit for these models remained with Citroën, which did not help CIJ expansion.

The exclusive fabrication of model cars for Citroën ended in 1934; however, several years later CIJ signed a less inclusive contract with Renault, one of France's earliest and largest automobile manufacturing companies. Louis Renault founded Renault, naming the famous company after himself.

CIJ built numerous Renault scale model cars in several scales, from 1:10th to 1:43rd scales. These model cars



Above: This CIJ 1:30th scale Renault truck is made of tinfoil and is in excellent condition. It was offered on eBay for \$333.

were partly made of lithographed metal ware or in particular of zamak, which is a family of metal alloys with a zinc base and alloying elements of aluminum, magnesium, and copper. All distribution rights for these Renault scale models remained with CIJ.

In 1950, CIJ entered into a contract to produce miniature, model Shell filling stations. Included in this contract was CIJ's scale model replica of the Shell Berre transporter truck. The transporter was made of ramec, an alloy that is blended aluminum, copper, zinc, and magnesium.

Along with service stations, CIJ made a

line of O gauge model train buildings. These buildings were made of wood, painted, and highly detailed.

In December 1964, CIJ began expansion of its works in Briare, and the company bought all remaining stock of its former competitor JRD, which was another French toy manufacturer. Jean Rabier et Donnot (JRD) founded JRD in 1935 and began producing toy vehicles in 1937, after the Michelin brothers had purchased the French car manufacturing company Citroën. JRD became the sole manufacturer of Citroën scale model vehicles at this time. When CIJ purchased JRD in 1963,



Above: Made in the 1950s, this CIJ Panhard BP petrol truck is similar to the one Dinky toys made. This truck is valued at \$46.

production of the CIJ brand of French toys continued until 1967 when CIJ disappeared from history.

In April 2007, Norev, a French manufacturer of diecast scale model cars, purchased the CIJ brand, announcing the new production of 13 CIJ model cars from zamak and two lithographed models from iron sheeting—a 4CV Renault and a Juvaquatre.

Today, model car, truck, and military collectors enjoy searching for CIJ scale model vehicles. CIJ issued several scale model military vehicles, including Renault military cannon truck, a Saviem military rocket launcher, Renault military gun carrier, and a Renault Schooner radar truck. In all, CIJ produced about 15 military vehicles and a few construction models, including a nice Renault Camion Grue crane truck.

CIJ also produced some striking fire engines and trucks, including a 1:43rd scale Renault fire truck and a Renault Camion ladder truck.



Above: Produced in 1957, this CIJ Renault Goelette milk truck with milk cans is 13 inches long and valued at \$500.



Above: Beautiful, 1:50th scale Shell tractor/trailer gasoline transport truck. Made by CIJ, this transport truck is valued at \$89.



Above: CIJ produced this Renault Camion Pompiers ladder truck in 1939. Made in 1/40th scale, this fire truck is valued at \$307.



Left: This model would excite military and truck collectors. It is a metal CIJ Renault military cannon truck with projectiles. This vehicle is valued at \$82.



Above: This model is a CIJ Saviem military rocket launcher with rocket. It is made of metal and valued at \$246.



Above: Built by CIJ entirely of painted wood, this French toy train station is considered O gauge and is valued at \$60.

ORDER FORM SUBSCRIPTIONS ← → SAMPLE

THE AUCTION EXCHANGE And COLLECTORS NEWS

PO Box 90, Knightstown, IN 46148-0090
Phone Toll Free (888) 339-3795, x134 • Fax (877) 223-3778
info@eauctionexchange.com



Free Sample Copy of *The Auction Exchange & Collectors News*
(One free sample per address per year)

SUBSCRIPTIONS: New Subscription Renewal

- \$42⁰⁰ for 1 year (51 issues)
- \$75⁰⁰ for 2 years (102 issues)
- \$104⁰⁰ for 3 years (153 issues)

Total enclosed: \$.....

Name.....

Address.....

City..... State..... Zip.....

Phone..... Email.....

This is a gift, please send a postcard announcing the gift subscription
From.....

I read *The Auction Exchange* for:

- Auction reviews
- Articles
- Advertising
- Other

Mail this completed form with payment to: PO Box 90, Knightstown, IN 46148-0090

CREDIT CARD ORDERS: 800-876-5133

Tony Gregory Publisher

Lorri Egan Publication Mgr./Advertising

Connie Swaim Managing Editor

Tari True Pre-press Manager

Auction Exchange and Collectors News
Published weekly except one week in December
(51 issues) and mailed every Thursday
ISSN: 0279-0950

Published by MidCountry Media, Inc.
27 N. Jefferson St., PO Box 90
Knightstown, IN 46148

Periodicals postage paid at Knightstown, Indiana
and additional mailing offices.

Subscription price: \$42.00 for one year
\$75.00 for two years; \$104.00 for three years

POSTMASTER:

Send address changes to:
The Auction Exchange and Collectors News
PO Box 90
Knightstown, IN 46148-0090

SUBSCRIBERS:

We print the advertisements as sent to us by
the auctioneer. It is not possible to check the
correctness of the listed items, *so before
traveling a long distance for a particular item,
contact the auctioneer first by phone.*

Publishers Emeritus:

John Armstrong, Randy Barz,
Judy Huxmann, Lars Svendsen

Reproduction in any form is prohibited without
the written consent of the publishers.

ALL RIGHTS RESERVED.

Please report late delivery

The Auction Exchange would like to thank our subscribers & advertisers for their patience as we continue to navigate delivery delays caused by the United States Postal Service.

While our logistics team has continuously reported these delays to the Business Service Network managers at USPS, we have yet to see any improvement. As you may have noticed, the late delivery article in *The Auction Exchange* hasn't listed specific cities in many months. This is because there have been 100's cities in Michigan reporting consistent late and non-delivery of their weekly newspapers.

We have decided it is in our best interest to list the contact information for the Business Service Network Managers in the Michigan area that have been receiving the Publication Watches our office files to notify USPS of service problems.

We here at MidCountry Media have also filed complaints with the Postal Regulatory Commission, The Postal Board of Governors & Consumer Affairs pertaining to the consistent, unsolved, delivery problems in the state of Michigan. We continue to work toward a solution. In the meantime, *The Auction Exchange* is available online at **EAuctionExchange.com**.

- MI USPS BSN Amber VanVolkinburg – 616-776-6143
- MI USPS BSN Tanisha Dorsey – 313-225-5422
- MI USPS BSN Tanisha Welch-Rabb – 313-225-5425
- MI USPS BSN Terrance Reynolds – 313-225-5426
- MI USPS BSN Milli Kay – 888-276-1293
- MI USPS Michigan Metroplex – 248-457-4074

GENERAL ADVERTISING INFORMATION

➔ **DEADLINE IS TUESDAY AT 12 NOON**

----- Unless otherwise noted -----

ADVERTISING SIZES AND RATES

- 1/8 page (5"Wx4"H) - \$83.80
- 1/2 page (10¼"Wx8"H) - \$315.56
- 1/4 page (5"Wx8"H) - \$157.77
- Full page (10¼"Wx16"H) - \$546.15

Call for additional sizes and rates 888-339-3795

Open Rate

Our open rate is calculated at \$7.33 per column inch. Call for more information about our Low Cost Standard Open Rate (\$6.98/col.) which is based on a minimum of 10 point type in the body copy.

Display Advertising

Each page is six columns wide (10-1/4 inches) by 15-1/2 inches high. Each column is 1-5/8 inches wide. We use a minimum of 10 pt. type (for body copy) for purposes of readability, and specific point sizes for heading (24 pt.), date (18 pt.), city/state (16 pt.) so please keep this in mind as you plan your ad. We typeset your ad to fit our specifications while keeping in mind your requirements and the need to minimize the cost of your ad.

Back Cover Ads: Back cover ads are booked in advance by reservation - call for availability.

Deadlines/Sending Copy: Our deadline is 12 noon on the Tuesday before the issue date, (Tuesday). All material must be received by this time, including photographs. (Call for holiday schedules.) A 10% surcharge will be added to display advertising received Tuesday between 12 Noon and 3:00 p.m. We cannot always guarantee insertion of late ads. In all cases, it's a good idea to call and notify us that an ad is being sent, and to confirm that your ad has been received.

Mail Your Copy: 27 N. Jefferson St., Knightstown, IN 46148.

Fax Your Copy: You may fax your ad to us at: 877-223-3778.

E-Mail: Please send "Text Only" format, we cannot use files that have been saved in their native software.

Email address:
info@eauctionexchange.com

Photos: should be sent in JPG format, as attachments to E-mail. We accept color, or black and white.

Accuracy: Every effort is made to ensure the accuracy of your finished ad. Sending it to us well in advance is essential in allowing adequate time for proofing and faxing layouts to you for approval. We assume no guarantee or liability concerning the accuracy of published advertisements

ISSUE DATE	DEADLINE (NOON)
MAY 19.....	TUES., MAY 12
MAY 26.....	TUES., MAY 19
JUNE 2.....	TUES., MAY 26
JUNE 9.....	TUES., JUNE 2
JUNE 16.....	TUES., JUNE 9
JUNE 23.....	TUES., JUNE 16
JUNE 30.....	TUES., JUNE 23
JULY 7.....	MON., JUNE 29
JULY 14.....	TUES., JULY 7

THE AUCTION EXCHANGE And COLLECTORS NEWS ZONE MAP

This zone map is a feature of *The Auction Exchange & Collectors News* and is designed to make it easier for you to locate events throughout the region. You will find the Zone symbol following the city and state in the heading of each ad. This symbol will correspond to the zone map shown here.

UPCOMING AUCTION CALENDAR

JANUARY FEBRUARY MARCH APRIL MAY JUNE JULY AUGUST SEPTEMBER OCTOBER NOVEMBER DECEMBER

The Upcoming Auction Calendar is a listing of future Auctions beyond the current week.

Auctioneers: This service is provided at no charge. As with everything - we do our utmost to make sure that your Auction is listed in a timely and accurate fashion.

For our Readership: For more thorough listings contact the Auctioneer personally and tell them where you saw their ad!

ZONE 2

Thu., May 14, Jim Lambert Auctioneers (MI), Miscellaneous, Hersey, MI

Sat., May 16, Jim Lambert Auctioneers (MI), Estate, Ewart, MI

Thu., May 21, A Yoder Auction, Equip., Tool, Clare, MI

Thu., May 21, Currie Auction Service, Miscellaneous, Big Rapids, MI

ZONE 3

Sat., May 16, Lets Talk Auction, Miscellaneous, Mio, MI

ZONE 4

Wed., May 13, Stantons Auctioneers, Machinery, Nashville, MI

Thu., May 14, Art Smith Auctions, Miscellaneous, Sparta, MI

Sat., May 16, Dales Auctioneering Service LLC, Spring Consignment, Holland, MI

Thu., May 21, Dales Auctioneering Service LLC, Tool, Misc., Holland, MI

Sat., May 23, Art Smith Auctions, Estate, Remus, MI

Sat., May 23, Dales Auctioneering Service LLC, Sportsman, Gun, Tool, Holland, MI

Thu., May 28, Dales Auctioneering Service LLC, Farm Equipment, Tool, Spring Lake, MI

Fri., May 29, Hahn Auction Service, Personal Property, Dowagiac, MI

Sat., May 30, Dales Auctioneering Service LLC, Tool, Holland, MI

Sat., Jun. 6, Dales Auctioneering Service LLC, Tool, Auto, Zeeland, MI

Fri., Jun. 12, Stantons Auctioneers, Firearm, Hastings, MI

Sat., Jun. 20, JP Auction Sales Service, Auto, Tools, Eng., Holland, MI

Sat., Jul. 11, JP Auction Sales Service, Auto, Tool, Eng., Holland, MI

ZONE 5

Thu., May 14, Michael Auction & Realty Service, Estate, Allen, MI

Thu., May 14, Stantons Auctioneers, Personal Prop., Vermontville, MI

Fri., May 15, Holler & Hammer LLC, Coca Cola, Jackson, MI

Sat., May 16, Holler & Hammer LLC, Gas, Oil, Jackson, MI

Sat., May 16, Mel White Auctioneer, Estate, Charlotte, MI

Sat., May 23, Braun & Helmer Auction Service, Super Auction, Tipton, MI

Sat., May 23, Mel White Auctioneer, HH, Coll., Misc., Charlotte, MI

Sat., May 30, Mel White Auctioneer, Gun, Coll., HH, Eaton Rapids, MI

Sat., Jun. 6, Americana Auctions, Antq., Glass, Misc., Grand Ledge, MI

ZONE 6

Thu., May 14, Braun & Helmer Auction Service, Estate, South Lyon, MI

Thu., May 28, Braun & Helmer Auction Service, Estate, Ann Arbor, MI

Sat., May 30, Rowley's Auction Service, Personal Property, Yale, MI

ZONE 8

Tue., May 12, Hahn Auction Service, Electrical Company, Mishawaka, IN

Fri., May 15, Chupp Auctions & Real Estate LLC, Signs, Petro Sign, Shpshewana, IN

Wed., May 20, Shpshewana Auction, Miscellaneous, Shpshewana, IN

Wed., May 20, Strawser/Real Estate Sails, Inc., 6 Day Antique, Wolcottville, IN

Fri., May 22, Hahn Auction Service, Toy, Coin, Watch, Nappanee, IN

Sat., Jun. 6, Chupp Auctions & Real Estate LLC, Clock, Lighting, Shpshewana, IN

ZONE 12

Mon., May 18, Aaron Mast, Antq., Coll, Misc., Middlefield, OH

LIST YOUR UPCOMING AUCTIONS FREE!

Day	Date	Auction Company	Type of Auction	Town	State

Mail to: The Auction Exchange & Collectors News
PO Box 90, Knightstown, IN 46148-0090



AUCTION SATURDAY, MAY 16 @ 10:00 AM

LOCATION: 620 N. LAFAYETTE ST. DIRECTIONS: North of Downtown Greenville at the corner of M57 and m91, North on m91 one mile to auction.

GREENVILLE, MI **48838**

We have TWO local estates, collectibles from a DeWitt dealer and farm primitives from a long time Kalkaska collector. 10% BP.

VERY BRIEF LIST: 2013 Dodge Grand Caravan, 167,000 miles; Vulcan Anvil; Advertising; Furniture both Antique & Modern; Evinrude Outboard Motor; Tools; Pyrex & Other Glassware; Pedal Car; & Much More coming In.

Watch website for updates.

Merritt Auctions
(616) 754-9437
www.MerrittAuctionService.com

THE VERN COLE ESTATE Live On-site Public Auction SATURDAY, MAY 23rd @ 10:00 AM

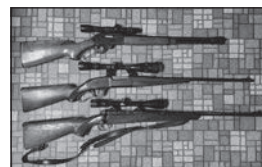
INSPECTION: Fri., May 22. 3 PM-5 PM

LOCATION: 1446 5 MILE RD.

DIRECTIONS: South of Remus 4 miles or north of Six lakes 8 miles of M-66 to 5 Mile Rd, east 1 1/2 miles.

REMUS, MI 49340 (Mecosta Co) **ZONE 4**

Auction held to help settle the Estate of the late Vern Cole. Vern owned and operated Cole Tire in Remus for over 50 years. Overview includes: Kubota R510 4x4 diesel articulating wheel loader; Kubota ZD 1021 diesel 50" zero turn lawn mower (1 owner, 161 hrs); Kubota HST G1800 diesel lawn mower; 1964 Farmall 806 diesel; 2018 Chevrolet 2500 Silverado 4X4 6.0L Vortex V-8, ex cab (110K miles); Michigan Loader 75B diesel wheel loader (non-running); NI 400 hay rake; NH 1495 self-propelled haybine; Vermeer 604 round baler; NI 5212 hay bine; Huge industrial diesel generator; 18'X20' carport; Koach CIF 300 stainless steel Cryogenic Nitrogen freezer; 5th wheel 3 axle lowboy trailer w/huge tire Shredder/Rasper; Stock & equipment trailers; 2009 Chevy 2500 4X4 ex cab (rough); 2000 Chevy 1500 Suburban (rough); 1988 Ford 7000 cab-over diesel 24' box truck (non-running); Torches; Welders; Toolboxes full; Ruger Mini-14.223 tactical stock; Marlin 336 30-30 lever; 300 Savage; Win 70 .270Win bolt; Browning Sweet Sixteen autoloader Belgium; Browning Magnum 12ga autoloader Belgium; Taurus 38 38SPL revolver & more. **LARGE AMOUNT OF HEAVY SCRAP IRON:** 30 days for removal; Lots heavy industrial scrap equipment; (10) 48'-60' semi-trailers; (7) Scrap cars & pickups; Scrap farm equipment; Heavy tire shredding machines; (10+) Extra lg. elect. motors; Large engine blocks;



Visit www.artsmithauctioneers.com or Call Noah Smith for flyer 616-633-4254

PHONE NUMBER: 888-339-3795

WEEKLY Auction Calendar

The Weekly Auction Calendar is provided as a service for our Advertisers and Readers. We make every effort to ensure accuracy of the calendar but always refer to the complete Ad to verify the Calendar information. Unless specified by the Auctioneer in writing we reserve the right to designate the 'Type' of Auction listing. © INDICATES THE AD APPEARS IN SECTION 2 OF THE PAPER

DATE	TIME	AUCTIONEER/SRV. CITY	TYPE	PAGE/SEC.
ZONE 2 MICHIGAN				
Thu., May 21	5pm	A Yoder Auction Clare, MI	Equip., Tool	8
Thu., May 21	10am	Currie Auction Service Big Rapids, MI	Miscellaneous	12
ZONE 3 MICHIGAN				
Sat., May 16	8:30am	Lets Talk Auction Mio, MI	Miscellaneous	8
ZONE 4 MICHIGAN				
Wed., May 13	5pm	Stanton's Auctioneers Nashville, MI	Machinery	7
Thu., May 14	10am	Stanton's Auctioneers Vermontville, MI	Miscellaneous	7
Thu., May 14	6pm	Stanton's Auctioneers Vermontville, MI	Real Estate	7
Sat., May 16	10am	Merritt Auction Service Greenville, MI	Miscellaneous	6
Thu., May 21	4pm	Dales Auctioneering Holland, MI	Tool, Misc.	11
Sat., May 23	10am	Art Smith Auctions Remus, MI	Estate	6
Fri., May 29	10am	Hahn Auction Service Dowagiac, MI	Personal Property	9
Fri., Jun. 12	8am	Stanton's Auctioneers Hastings, MI	Firearms	7
ZONE 5 MICHIGAN				
May 8 & 9	9am	Yoder Brothers Midland, MI	Horse & Carriage	9
Sat., May 16	10am	Mel White Auctioneer Charlotte, MI	Estate	11

DATE	TIME	AUCTIONEER/SRV. CITY	TYPE	PAGE/SEC.
Sat., May 23	10am	Braun & Helmer Auct. Tipton, MI	Super Auction	2
Sat., May 23	10am	Mel White Auctioneer Charlotte, MI	HH, Coll., Misc.	11
ZONE 6 MICHIGAN				
Fri., May 15	11am	Rowley's Auction Svc. Otisville, MI	Estate	3
Thu., May 28	10am	Braun & Helmer Auct. Ann Arbor, MI	Estate	8
Sat., May 30	10am	Rowley's Auction Svc. Yale, MI	Personal Property	3
ZONE 8 INDIANA				
Fri., May 22	Noon	Hahn Auction Service Nappanee, IN	Toy, Coin, Watch	13
Sat., Jun. 6	10am	Chupp Shipshewana, IN	Estate	14
ZONE WEB				
		John Peck West Branch, MI	Estate	9
		Merritt Auction Greenville, MI	Antq., Coll., Toy	8
		Narhi Auctions Online	Estate	3
		Pioneer Online	Estate	9
		Sheridan Online	Equipment	12
		Wegner Online	Miscellaneous	11
ZONE CALENDAR				
Every Wed.	9am	Shipshewana Shipshewana, IN	Antique, Miscellaneous	8

Need to Contact Us?

Call: 1.888.339.3795 ext. 134 for advertising
 Dial Ext. 0 to report late delivery
 E-mail: info@eauctionexchange.com

ED MURPHY MACHINERY AUCTION

WEDNESDAY AFTERNOON, MAY 13, AT 5:00 PM
 LOCATION: 5377 S. M-66 HIGHWAY (1-1/2 miles south of Nashville)
NASHVILLE, MICHIGAN 49073 zone 4

A small sale of very good clean and housed farm equipment including Case 450 Dozer, an excellent International 1566 Diesel Turbo Tractor with Front Weights, Cab & Duals (only 2899 hours), International 400 & MTA Tractors, A.C. "G" Tractor, Tillage Equipment with a Brillion 12' Cultipacker, a JD 17 Hole Grain Drill with F & S, International 24' Wheel Drag with Folding Wings, 3-Point Cement Mixer, 3-Point Hurd Seeder, Elevator Drag, 1994 Freightliner FLD-120 with 12.7 Detroit Diesel Engine with an 18' Midwest Grain Box with Hoist, Fairbanks 500 lb. Platform Scales, Colt Antique Lawn Tractor, 1981 Pontiac 265 cubic inch V-8 Engine, Power Pipe Threader, Set of 14.9 x 28 Chains, White #271 - 24' Wing Wheel Disc. Also log chains, older push mowers and compressor, large cage fan, Allis Chalmers Single Mounted Bottom Plow, a Rear End for a JD 450 Bulldozer, group of Cant-Sag Live-stock Gates, Stock Tank, Hog Feeder, Milk Cans, Stainless Milker Units, Antique Horse-Drawn Road Grader, a good 12' Drag, International Loader Arm, very good Wagon with Gravity Box, International 6-Bottom Spring Reset Plow on-land hitch along with more small items including a group of steel and electric fence posts. Be on time! A 10% buyer's premium will be charged on all items sold.
 Inspection Day: Saturday, May 9th from 9:00 am to 3:00 pm
 For additional information call Ed Murphy at 517-852-9409




144 S. Main Street,
P.O. Box 146
Vermontville, MI 49096



Ph. 517-726-0181
Fax 517-726-0060
e-mail: stantonsauctions@sbcglobal.net
www.stantons-auctions.com

Selling all types of personal property and real estate at auction anywhere.
Call for a no-obligation consultation to discuss your personal situation.

PHIL BYINGTON ESTATE PERSONAL PROPERTY AUCTION

THURSDAY MORNING, MAY 14, AT 10:00 AM
 LOCATION: 3737 FRITH RD.
VERMONTVILLE, MICHIGAN zone 5

A brief listing of the items to be sold includes Oliver 1850 Gas Tractor, Case 885 tractor, A.C. 7000 tractor for parts, like new Huskee 22 ton Log Splitter, Acetylene & Lincoln 225 amp Welder, Upright & Horizontal Air Compressors, Anvil, Chain Saws, Horse Trailer, Tri-axle 5th Wheel Trailer, Car Dolly, Pickup Camper, other trailers, equipment and misc. scrap iron, a group of home furnishings and smalls, shop tools, 3 pt. Disc, live traps, electric cords, Rear-tine Rototiller, Pickup Camper, Golf Cart, Huskee Riding Lawn Mower, Wood 3 pt. Scraper Blade, Generac GP7500 Generator, a group of Horse Equipment and Tack, Brush Hooks, Buzz Saw Blades, Tire changer, tool boxes, drill press, motor home for parts, bicycles, Milk cans, BBQ grill, pole saw, bench vise, ladders, Round oak table, and lots more to be sold. *There will be a 10% buyer's premium charged on all items sold.*




144 S. Main Street,
P.O. Box 146
Vermontville, MI 49096



Ph. 517-726-0181
Fax 517-726-0060
e-mail: stantonsauctions@sbcglobal.net
www.stantons-auctions.com

Selling all types of personal property and real estate at auction anywhere.
Call for a no-obligation consultation to discuss your personal situation.

PHIL BYINGTON ESTATE

REAL ESTATE & PERSONAL PROPERTY AUCTION
THURSDAY, MAY 14, 2026
PERSONAL PROPERTY - ONSITE - 10 A.M. REAL ESTATE - 6:00 P.M.
HELD AT THE COMMUNITY CENTER, 108 N. MAIN, VERMONTVILLE, MI

Selling this 142 acre farm with buildings, woods and farmland. Offered in 4 parcels, combinations & as a whole. Also farm equipment, shop & hand tools, home furnishings, etc.






144 S. Main, Vermontville, MI 49096
Ph. (517) 726-0181
Email - stantonsauctions@sbcglobal.net
Website - www.stantons-auctions.com



Open Houses
 Mon. Aft. May 4th - 4:00-5:30 P.M. and
 Sunday, May 10th - 4:00 - 5:30 P.M.

ANTIQUE & MODERN FIREARMS

FRIDAY MORNING, JUNE 12, 2026 @ 8 AM
 LOCATION: BARRY COUNTY FAIRGROUNDS, 1350 N. M-37 HWY.
HASTINGS, MICHIGAN zone 4

We are now accepting consignments of entire Estates and collections, as well as individual & small groupings of firearms. Our recent sales have generated over \$2,000,000.00 for our sellers and consignors. Call Steve Stanton (517) 331-8150 to discuss the sale of your collection. We offer free pickup on groups of firearms.



144 S. Main Street,
P.O. Box 146
Vermontville, MI 49096



Ph. 517-726-0181
Fax 517-726-0060
e-mail: stantonsauctions@sbcglobal.net
www.stantons-auctions.com

Selling all types of personal property and real estate at auction anywhere.
Call for a no-obligation consultation to discuss your personal situation.



Shipshewana Auction

ANTIQU & MISCELLANEOUS AUCTION

Every Wednesday, Year-Round at 9:00 am EST



Items pictured above will sell in our May 20th Antique & Misc. Auction

Preview consignments at AuctionZip.com! Auctioneer ID #1945

We have seller space available. Call (260) 768-4129 to consign items!

www.ShipshewanaTradingPlace.com • (260) 768-4129 • 345 S Van Buren St, Shipshewana, IN 46565

ONLINE AUCTION BID NOW UNTIL CLOSING AT 6PM ON MONDAY, MAY 18

Antiques, Collectibles, Sports Cards, Toys

NEW LOCATION: 620 N. Lafayette St
 GREENVILLE, MI 48838 zone web



To view, Register and Bid you will need to go to MerrittAuctionService.Hibid.com

Call to add your items or collection to our next great auction.

Merritt Auctions
 Auction Manager Breydon Hardy
 616-734-9893
MerrittAuctionService.Hibid.com

COMBINED ESTATE/ MOVING AUCTION! SAT., MAY 16TH, 10AM

Preview: 8:30 AM Day of Sale

LOCATION: AUCTION ACRES, 1491 Perry Creek Rd. & M-33.

DIRECTIONS: Auction Barn is located between the towns of Mio & Fairview. Just 7 miles north of traffic light (M-33/M-72) in Mio or 2 miles west of blinking light (M-33/M-72) in Fairview.

MIO, MI 48647 zone 3

To Include: Antique Oak High-Back Beds, Swing Mirror Dressers, Highboy Chest, Wardrobes, Stepback Kitchen Cupboard, Round Table/Chair Set & Secretary Desk; Peeled Log Platform Rockers, Single Bed, Wardrobe, Table/Chair Set; Canoe coffee table; Plank Board Cradle; Copper Boiler; Crocks; Hudson Bay Blankets; Antique Hanging Parlor Lights; Wash Bowl Pitcher Sets; 7' Oak Lighted Cross & Christian Related Items; 6' Tin Rooster; 4' Star Wars Stormtrooper Figurine; Coca Cola Picnic Cooler; Oil Lamps; Duck & Fish Decoys; **Shop/Outside:** Small Airplane Frame w/Rebuild Related; Black Hawk Upright Air Compressor; Ridgid Slide Arm Miter & Jobsite Table Saws; DeWalt Miter & Table Saws; Garage Related; 2025 Specialized Como 3 E-Bike; Old Town Canoe; Ladders; Drywall Lift; Shop Vacs; JD Front Tine Tiller; Stihl MS311 & Other Chainsaws; Snow Blowers: Riding Mowers; 4500w, 5000w & 8500w Generators; Concrete Bull Float; Updates Coming Soon!! Please Check Back!

Auctioneer's Note: I want to thank everyone that attended our first "Back Again" auction April 25th, a few minor hiccups and a whole lot of re-learning for us, please be patient as we work through this. I'm a bit overwhelmed lining up, picking up and building advertisements please follow our website as we build more awesome auctions to share with you. Look forward to seeing you at the Auction! Thanks, GREG & STAFF!

LTA LETS TALK AUCTION
 Auction Acres: (989) 848-5158
www.LetsTalkAuction.com

PUBLIC AUCTION

THURSDAY, MAY 21, 2026 @ 5:00 PM

LOCATION: 3528 E. STEVENSON LAKE RD.

CLARE, MI 48617 zone 2

SHOP EQUIPMENT & MACHINIST TOOLS: National 38" Lathe • Ramco Bridgeport Milling Machine w/Digital Readout • Miller 250 Tig & Mig Welder (Like New) • Powermate 5000 Watt Generator • Ridgid Metal Cutoff Saw • Grizzly 7" Metal Band Saw • Craftsman Floor Model Drill Press • Delta Bench Top Drill Press • Metal Support Stands • Rack of Steel Pieces • Tool Boxes • Funnels • Electrical • Drills • Quantity of Hand Tools • Electric Grinder • Assorted Bolts • Plumbing Fittings • Lathe Tooling • Milling Machine Tooling • (4) Vises • Battery Chargers • Chain Falls • Milling Machine Vise • Welding Helmets • Acetylene Torches • Central 20-Ton Press • Porta Power w(4) Heads • JT Slocum Micrometers • Starrett Depth Gauges • Leveling Gauge • Dial Indicators • ID Tools • Carbide Bits • ID Collets • Taps • Reamers • Joe Blocks • Sheet Metal Clamp • Broches • Allen Wrenches • Wood Planer • Bostich Air Compressor • **GARAGE & OUTDOOR ITEMS:** Husqvarna Chainsaw • Stihl 017 Chainsaw • Stihl 018C Chainsaw • (2) Extension Ladders • Water Pump • Sump Pump • Hydraulic Jacks • Chains • **COLLECTIBLES & MISCELLANEOUS:** 1984 Coleman Lantern • Seth Thomas 8-Day Mantel Clock • Hamilton 8-Day Mantel Clock •

Yoder Auction LLC
 Aden Yoder, Auctioneer
 (989) 429-7049
www.avoderauction.com

This Is Only A Partial Preliminary Listing!
 Visit our website for pictures and updates.
Ron Carpenter, Owner

STAY ALERT! BE AWARE! Auction Advertising Is Everywhere!

RICHTER ESTATE AUCTION

Preview 8:30 AM Day of Auction

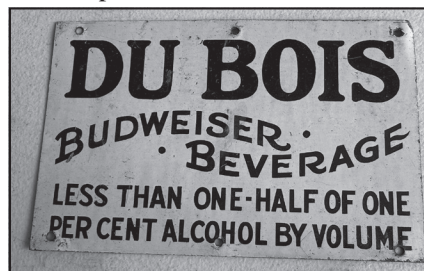
THURSDAY, MAY 28 at 10:00 AM

LOCATION: 1706 Waverly St.

ANN ARBOR, MI 48103 zone 6

Huge collection of vintage Budweiser thing in between! If you like vintage advertising to include: Vintage metal Budweiser, you won't wanna miss this signs, lamps, clocks, light up pieces, auction! Statehouse Sterling Silver Flat-diecast trucks NIB, Budweiser light, ware Service for eight, Toro recycler, Clydesdale, Beer Stein's, Point of sale, lawnmower and Toro snowblower, vintage Barbie doll collection, Oak dining room set, Antiques, U of M collectibles and much more!

View hundreds of pictures on our website BraunandHelmer.com
 For questions contact Brian Braun at 734-368-1736
brianlloydbraun@gmail.com



Braun & Helmer Auction Service
 Questions? Call or Text
 Brian L. Braun - 734.368.1736
brianlloydbraun@gmail.com
www.BraunandHelmer.com



PIONEER AUCTION SERVICE

ONLINE AUCTION



Gene & Peggy Neitzki Estate Auction

Item Preview: Monday, May 18th, 4-6pm
Soft Closing: Wednesday, May 20th at 7pm

Auction Location:
717 E. Saginaw Rd.
Breckenridge, MI 48615



**Hard to Find Antiques,
Lamps, Crocks, Stoneware,
Coins, Jewelry, Tools,
Washer / Dryer, Furniture,
Lawn & Garden**

www.pioneerauctionservice.com
Questions Contact: Amanda (989) 304-1574 or Jason (989) 621-7194



Essential information and advertising for lovers of Antiques, Collectibles, Estates, Farm, Real Estate and Commercial Auctions

Advertise or Subscribe Now!

888-339-3795 | info@eauctionexchange.com
eauctionexchange.com



Busick Personal Property AUCTION

Friday, May 29th, 2026

Starting at 10:00 am EDT

SKID LOADER • TRACTORS • MOWER
FARM PRIMITIVES • ANTIQUES

Case 1818 skid loader 36" and 42" bucket, 1636 hours; International 574 gas utility tractor, wide front, rear 3 pt., completely overhauled 3 years ago; Massey Harris 50 utility tractor, wide front with rear 3 pt.; Woods Brush Bull Model BB60.30 3 pt. mower, 2 years old, 5'; Old wood crates; Walk-behind plows; Cultivators; 16' pipe gates; 12' pipe gates; Fence panels; New Idea manure spreader with end gate, hydraulic; Fence; Fence posts; Roll of woven wire; (2) new 10' long cattle feed bunks; 2-bottom 3 pt. plow; Chicken nests; Old wooden keg; Old cast iron wheel grain drill; Heavy duty 3 pt. log splitter with 8 hp gas engine; 6 1/2' wide deep dish 3 pt. disc; 3 pt. post hole digger - 2 sized augers; 3 pt. 6' grader blade; Antique leg vise; Chicken feeders; Chicken waterers; Chicken cage; New Troy-Bilt Super Bronco CRT 16" wide up to 6" depth rear-tine rototiller; Acetylene torch set; Metal child's wagons; Misc. primitives, including an old bagger, cob forks, pitcher pumps; Horse-drawn items; Metal seats; Platform scales; Old trunks; Large amount of canning jars; Coronado wringer washer; (20) crocks - 30, 20, 15, 10 & 5 gal.; Crockery jugs; Galvanized wash tubs; Old wooden tool chest; Antique dehorner; Antique bull blinders; Crosscut saws; Strawberry boxes; Metal strawberry box carrier; Antique metal patio glider; Oak 5-drawer chest of drawers; Porcelain top table; La-Z-Boy recliner; Day bed/sofa; Approximate 50" tall chimney-style cabinet; Wooden desk; Antique hired man's bed; Misc. kids toys and dolls; Walnut drop leaf table; Milk cans; Watering cans; Cast iron pails; Large amount of various books; Antique farm toys; Antique Singer sewing machine; Lighted H&R Block income tax sign; 4-drawer file cabinets; Cast iron skillets; Misc. pots, pans and others; Old floor model drill press with cast iron base; Approximate 125 pound anvil; Lincoln 225 welder; Misc. hand tools; Hole saws; Drill bits; Floor jack; Misc. hardwood lumber; Varied size live traps; Stihl leaf blower; Campbell Hausfeld air compressor

TERMS: Cash or Check with proper ID. Credit Card w/Convenience Fee 5% BUYER'S PREMIUM
Any Announcements Made Day of Sale Take Precedence Over Printed Matter

Wanda Busick, Owner



HAHN

hahnrealtyandauction.com
AC39800021

Phil Hahn (574) 535-3783
IN Lic. #AU01012967

Jason Hahn (574) 536-7682

Brian Wuthrich Sale Manager (574) 268-4940 - Milford, IN

Office (574) 773-8445 • Nappanee, IN




Located 2 1/2 miles west of Dowagiac, Mich. on M-62 to Garrett Rd. at 55497 Garrett Rd. Dowagiac, MI 49047





YODER BROS. SPRING HORSE & CARRIAGE AUCTION

Midland Co. Fairgrounds, 6905 Eastman Ave., Midland, MI

FRIDAY & SATURDAY, MAY 8th & 9th, 2026 @ 9:00 am

475+ HORSES CONSIGNED

★ DRAFTS ★

- Lot# 1&2 - 3&4 yr old Blk Percheron Mares. Broke to farm machinery.
- Lot# 3&4 - 2&3 yr old Pullingbred Belgian Geldings
- Lot# 9&10 - 7&4 yr old Grey Percheron Mares
- Lot# 11&12 - 8&9 yr old Blk Percheron Geldings
- Lot# 17&18 - 7&8 yr old Sorrel Belgian Mares, in foal. 17 HH
- Lot# 26&27 - 4&5 yr old Dapple Grey Percheron Geldings, well broke, 17HH
- Lot# 32&33 - 5 yr old Dapple Grey Percheron Geldings, full bro. 16.3HH
- Lot# 37&38 - 3&4 yr old Sorrel Belgian Geldings, full bro. 16.3HH
- Lot# 46 - 8 yr Pullingbred Belgian Stallions 16.2HH. OVD Chester x Rock Cracker Polly
- Lot# 49 - 6 yr old Pullingbred Belgian Gelding
- Lot# 50-51 - 11&6 yr old Red Sorrel Belgian Mares
- Lot# 53-54 - 7&8 yr old Blonde Belgian Mares
- Lot# 58 - Pullingbred Yearling Filly, Red Sorrel
- Lot# 62 - Yearling Belgian Filly, Rocky's Rex x Kaley's CD Dixie
- Lot# 63&64 - 2 yr old Blk Percheron Geldings
- Lot# 68-69 - 4 yr old Blonde Belgian Geldings
- Lot# 81 - 3 yr old Grey Percheron Mare
- Lot# 95&96 - Yearling Blue Roan Percheron Fillys. Sire: Ocean Wave
- Lot# 96A - Yearling Blue Roan Percheron Gelding. Sire: Ocean Wave

★ DRIVING ★

- Lot# 200 - 3 yr old Stdbred Gelding - Mr Rock Star/Credit Winner
- Lot# 201 - 4 yr old Stdbred Mare - Dejambror/Vaporize
- Lot# 202 - 5 yr old Stdbred Mare - Luck Be With You/Artsplace
- Lot# 203 - 4 yr old Stdbred Gelding, Trottingbred
- Lot# 205 - 3 yr old Stdbred Gelding - New Town Chocolatier/Don't You For Get It
- Lot# 216 - 3 yr old Stdbred Mare - Rapon Oz/Ozzy Ozzy

- Lot# 217 - 3 yr old Stdbred Gelding - Mr Hard Rock/Rock Oaks Queen
- Lot# 238 - 13 yr old Stdbred Mare, Lovineverymoment. In foal to Photo Rocker
- Lot# 239 - 3 yr old Stdbred Gelding/Cantab Royal Dream
- Lot# 240 - 4 yr old Stdbred Mare/Mr Cantab. In foal to Mega Dreamer
- Lot# 281 - 5 yr old Stdbred Gelding - Spirit Seeker/Incredible Abe

★ RIDING HORSES & PONIES ★

- Lot# 400 - 4 yr old Percheron - QH x Gelding Palomino
- Lot# 402 - AQHA Palomino Gelding
- Lot# 406 - Yearling Gypsy - Draft QH x Filly, Silver Roan
- Lot# 407 - 3 yr old Blue Roan Mare - Denali Pine/FQHR Arikara Stallion
- Lot# 410 - Yearling Blue Roan Gypsy X Stud Colt
- Lot# 411 - 4 yr old Donkey Jenny w/6 month Baby
- Lot# 415 - 4 yr old Belgian QH x Buckskin Gelding
- Lot# 417 - 3 yr Blue Roan, Percheron QH x Mare
- Lot# 420 - 3 yr AQHA Blue Roan Gelding/FQHR Cobalt/7/11 Be A Tough Catch
- Lot# 423 - 4 yr old Gypsy Pony Gelding
- Lot# 424 - 5 yr old Reg. Appaloosa Mare
- Lot# 428 - 4 yr old Blue Roan Brabant - Gypsy x Gelding
- Lot# 429 - 9 yr old Mini Pony Gelding
- Lot# 430 - 7 yr old Grey Percheron x Gelding
- Lot# 438 - 5 yr old Gypsy x Mare
- Lot# 443 - 2 yr old AQHA Grullo Gelding, Bee Dees Pride/Buckleys Baby Cakes
- Lot# 445 - 5 yr old AQHA Gold Champagne Gelding - Micronman/Go Peppy Lena
- Lot# 446 - 3 yr old AQHA Buckskin Gelding, PCC Blue Tugs/SJ Suzies Petty Pep
- Lot# 452 - 4 yr old AQHA Cremello Gelding - Whiz My Nu Chex
- Lot# 459 - 2 yr old QH x Grey Mare
- Lot# 461 - 5 yr old AQHA - APHA Sorrel Stallion - Snipers Smoking Gun/Lunar Dreamz
- Lot# 471 - 4 yr old Appaloosa Gelding, SFL Mystic Class
- Lot# 505 - 4 yr old AQHA Palomino Gelding, Don't Stop Shootin'/TR Bissy



CALL FOR COMPLETE CATALOG 989-386-9082 or visit: gotoauction.com /2109

Yoder Brothers Auction Service

Specializing in Successful Auctions

Auctioneers LeRoy and Willis Yoder

9484 S. Rodgers Ave., Clare, MI • PH: 989-386-9082

JIM TROUT ESTATE AUCTION

“ONLINE ONLY”

Bidding Ends: WEDNESDAY, MAY 20TH @ 8:00 PM

WEST BRANCH, MI 48661 zone web



Excellent 1 owner estate auction for lifelong West Branch resident Jim Trout. Featuring 68 Ford F-350 Farm Hauler Dually, IH 544 Row Crop Tractor, 13 Dodge Caravan, 97 GMC Sierra Square Body 4x4 Truck, PJ Trailer, Bobcat Skid steer, Tools, Farm, Much More. Items are located on site in West Branch, MI

AUCTIONEER'S NOTE: This is a great auction in West Branch at a beautiful country setting. Nationwide shipping is available. **If you have quality items like this to sell, we are always accepting items for our next sale.**

SALE PICKUP DAYS

WEST BRANCH, MI - Friday 5/22/26 11AM - 4PM







JOHN PECK AUCTIONS

AUCTIONEERS FOR OVER 40 YEARS



We have multiple other quality auctions currently taking place. To bid & view 1,000's of photos visit JohnPeckAuctions.com

“Award Winning Auctioneers Since 1979”
989-345-4866

Gorham

FROM PAGE 1

Busch's Malt-Nutrine St. Louis". The circular plate was enclosed in an elaborate gold and navy blue period gilt gesso and wood frame measuring 14 inches square. A final bid of \$325 was required to claim it. A similar art plate also with decorative framing had the wording "Western Coca-Cola Bottling Co" on the back. This one closed with a high bid of \$300.

Finishing ahead of many of the art lots, a saxophone took high honors. The Charles Gerard Conn (Elkhart, Indiana), straight soprano saxophone was stamped with a patent date of Dec. 8, 1914. This style of saxophone is different from the usual, curved models and has an appearance more like a clarinet. Complete with a hard-shell case, several Rico reeds, mouthpiece, and other accessories, it was claimed with a final bid of \$800.

The art offerings provided a variety of styles, materials, and subjects. A



Above: Artist Armand Francois Joseph Henrion portrayed himself dressed as a Pierrot or sad clown in this oil on wood painting. It earned a final bid of \$750.

fascinating selection done by artist Armand Francois Joseph Henrion (Belgian/French, 1875-1958) portrayed himself dressed as a Pierrot or sad clown. The very close up view of his face was expressive and emotional. This oil painting on a wood panel was displayed

in a painted and gilt wood frame measuring 9 by 8 inches. It earned a final bid of \$750. An antique portrait painting in a gilt frame of a fashionable woman in early Victorian attire was done by artist Peder Christian Damborg (Danish, 1801-1865). This 13 by 14 inch oil on stretched canvas piece finished with a high bid of \$650.

A few lots offered double-sided, carved wood block selections by artist Flora Itwin Schofield (American, 1871-1960). Her Provincetown style carved white line wood-blocks were painted in color inks and featured female figures in various poses and activities, as well as some floral still life images. Her work is on permanent display at several art museums, including the Detroit Institute of Art. The highest selling example measured 8 by 12 inches, featured nude subjects, and closed at \$475. Other sets left with high bids of \$400-450.

Then there were items that defied categorization and contributed to the



Above: There were several beautiful lamps available, including this Lamb Brothers & Greene (Nappanee, Indiana) leaded stained glass table lamp circa 1910-1920, standing 20 inches tall that finished at \$325.



Above: Erna Rosenberg Nonnenmacher (German/English, 1889-1980) created this Art Deco bronze figure, titled "Girl with Frog". Measuring 5 inches tall, it was claimed with a final bid of \$300.



Above: Advertising trays or plates for Anheuser-Busch and Coca-Cola were offered in elaborate antique gilt frames and featured similar female subjects. This one closed at \$325 and the Coca-Cola plate finished at \$300.

enjoyment of this sale. A 1939 University of Michigan signed football displayed the names of several sports icons including Fielding H. Yost (also known as F. H. Yost), Fritz Crisler, Clarence L. Munn (also known as Biggie Munn) plus many more. This souvenir sized leather football scored a final bid of \$400. A 1954 and 1956 commemorative Michigan State University Rose Bowl Champions football interestingly was also signed by "Biggie" Munn while he was MSU Head Football Coach (1947-1953) and MSU Athletic Director (1954-1971). It closed at \$140.

An elegant Tiffany Studios "Modeled" or "Greek Key" pattern desk letter rack measured 6 inches tall by 9 inches wide. This gilt bronze item was marked on the underside and dated circa 1920s. This simple but appealing accessory proved popular, earning a final bid of \$500. Three

lots of late 19th/early 20th century presentation gold-topped canes were intricately engraved with floral and scroll work. Some were also inscribed or monogrammed for the owners. The gold on each was unmarked and untested but reported to be gold filled or rolled gold. Their overall appearance was dazzling. The highest selling duo included an L-shaped handle example. That pair left for \$375. The other two sets drew final bids of \$350 and \$260.

For something completely different, a Black Forest Germany hand painted and carved wood automaton depicting an inebriated man hanging onto a lamppost was an unusual sight. This bedraggled fellow was driven by a key wound spring that powered the bellows to allow him to move and whistle, and the lamp to light. Dated circa mid-20th century, it stood 19 inches tall and



Above: This unique key-operated Black Forest Germany hand painted carved wood whistling automaton figure sold for \$190.

was fully functional. It was taken home with a final bid of \$190.

Epic Auctions is looking at a very busy season. Their schedule is posted at <https://www.epicauctionsandstatesales.com/>



Above: A simple but elegant gilt bronze Tiffany Studios "Modeled" or "Greek Key" pattern desk letter rack dated circa 1920s earned a final bid of \$500.

Buena Vista Township Surplus Property

Online Auction zone Web

Opens: Tuesday, May 12 @ 7 pm

Closes: Tuesday, May 26 @ 7 pm

Inspection: May 26 from 10 am 12 pm Only

Pickup & Payment: Wednesday, May 27, 10 am- 12 pm

Register & Bid at wegnerauctioneers.com

The following list of vehicles & equipment not needed in the continuing operation of the BV DPW will be sold via on-line auction. 10% Buyer's premium applies to all sales. Everything sold AS-IS/WHERE IS.



Vehicles: 2009 Chev. Express Van, AWD, newer Jasper V8 LS Engine (2023), Adrian Steel Contractors cabinet, good body @150K miles * 2007 Chev. Express Van, AWD, Adrian Steel tool box & cage, Water Dept. Van, good body @145 K miles * 2009 Chev. Express Van, AWD, Adrian steel tool cabinet, damage front & fender @185K miles * 2001 Chev. 4x4 1/2 Ton Pickup * 1996 Chev. Cheyenne 3500 Series Pickup Truck, 4X4, 5.7L Vortec, auto trans., runs good, good tires rusty body, @ 162K miles * 1990 Chev. Silverado 1500 Series Pick Up Truck, Ext. Cab, excellent BFG tires, runs good @ 160K miles * 1994 Chev. Lumina Van, V6, runs good, decent body, @ 95K miles.



Outdoor Equipment: Land Pride #10-50" rototiller, 3pt., PTO driven.* Bush Hog #RDTH-72 Finish Mower, 3pt., pto driven, w/gauge wheels * Snow Dogg Receiver Mount Salt Spreader W/ controller, late model, low use * 5' Front Mount V-Blade



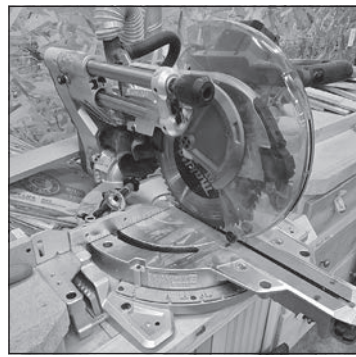
Wegner Auctioneers (989)793-8689
wegnerauctioneers.com

WOODWORKING TOOL AUCTION

THURSDAY - MAY 21 - 4:00 PM

LOCATION: 251 WEST 11th STREET

**HOLLAND, MI zone
4**



Smoker Craft 16' Fishing Boat w/25hp Mercury Motor; Gas/Pellet Grill; Floor Jacks, Jack Stands, Gas Heater; Grizzly 10" Wet Grinder; Log Chains; Battery Charger; 24' Aluminum Extension Ladder; Makita Miter Saw; Bosch Planer; Pipe Die Set; Aluminum Grain Shovels; Post Hole Digger; Various Paslode Nailers And Many Nails; Porter Cable Nailer; Hilti Te 14 Hammer Drill; Steel Drywall Panel Lift Hoist; DeWALT Wet Tile Saw; PVC Fittings; Stanley FATMAX Charger; Quincy 5 Hp 60 Gal Upright Air Compressor; Tru-Lathe Wood Turning Lathe; LOTS Of Scrap Iron & Wire & Copper; Cast Iron Eagle; Stacks Of Misc Lumber; Crain #499 Double Case Stretcher; Vintage Hardware Store Storage Cabinet; DeWALT radial Arm Saw; Makita Cut Off Saw; Various Deer Antler Mounts; Many Makita Battery Tools W/Batteries/Charger; BB/Pellet Guns; Hunting Boots; Mitutoyo Brass Drive Pin Punch Set; Air Impact Tools; Senco 1 Gal Air Compressor; Bar Clamps; Dremel 18" Variable Speed Scroll Saw; Tool Shop 6" Belt & 9" Disc Sander; 3 T HD Daytona jacks; Milwaukee SawZall; Rockler Beadlock Jig Kit; Lockset Installation Kit; Various Drill Bit Sets; Lots Of Hardware-Nails, Screws, Nuts & Bolts; Wilton Vise; Hole Saws; Ramset; Irwin Chisels; Duo-Fast Tacker; Shop Stools; Craftsman Shop Stool; Ridgid Pipe Wrenches; Dial Calipers; Wood Planes; Clamps; Power Sanders; Lumberjack Radius-Shoulder Tenon Joints For Log Furniture; Power Mate Commercial Spray Gun; Craftsman Air Drive; Fein Multi Master Tool; Crain Undercut Saw; Bosch Planer.

AUCTION NOTE: Local Contractor Has Passed Away And Will Be Selling His Woodworking Workshop Of Tools And Supplies.



DALES AUCTIONEERING SERVICE LLC
Dale Flokstra, Auctioneer
5075 Russcher Road, Holland, MI
(616) 836-3132 OR (616) 218-7391
www.dalesauctioneering.com

Auction Zip: ID #24272

Rely on experience - serving the public since 1983. We take pride in our business, our reputation is built on customer satisfaction - Let us go to work for you.

RENE VAN NESTE ESTATE AUCTION

SATURDAY, MAY 16, 10:00 AM

LOCATION: 3983 E. KINSEL HWY.

DIRECTIONS: : I-69 to the Pottsville Exit #66, south on Hartel Rd (M100) 2.8 miles to Kinsel, west to the sale.

**CHARLOTTE, MICHIGAN 48813 zone
5**

The following items will be sold at public auction:

TRACTOR: Ford 800 tractor. **OLD THINGS & COLLECTIBLES:** 2 Pitcher pumps; Triple Effect No 50 parlor stove; Nut cracker (52) collection; Asst. glass-ware & smalls; Smith Glass Moon & Stars in red, blue, green, amber, amberina (many pcs); Oak bookcase/secretary desk; Oak commode; Books on the Civil War, A. Lincoln; Lladro pair of doves figurine; Doll house kits & furniture; Christmas decorations; Standard Tester cream tester; Prentis Bull Dog No 52 bench vise; Folding rulers; Wood scribes; Union pacific RR CS-21 padlock; 1945 US Army Corp of Engineers compass; Coleman lanterns (55,71,72); 2 Heller-Aller Mod 3 pump jacks; Asst. old hand tools; RR manual rail car mover; Wood & steel pulleys; Western Electric & wizard fans; Machinist chest w/tools; Bolens walk-behind Mod B 6 cultivator; Singletrees, eveners, neck yolks, etc; Stove pipe floor grates; Globe MFG Kalamazoo jack; Wood pop & beer crates; Spence hot water gauge; Miller-Kenneth power hack saw (old); Barn beam drill; Massey Ferguson Model 10 hood & grill; Baker Power pump No B1; Two Man crosscut saws; Ass't Stanley wood planes. **OTHER USEFUL ITEMS:** 2 Schumacher battery chargers; Craftsman 2,000psi power washer; Kenmore Elite refrigerator; Built-in dishwasher; CP portable air compressor; Yard tools; Craftsman power mower; Bolt bins; Coleman camp stoves, catalytic heater; Peavy Backstage guitar amplifier; Craftsman 26" electric start snowblower; Convertible hand cart; Many other items.



TERMS: Cash, check, credit cards W/3.9% user fee
All items will be sold as is.

The seller nor the auctioneer will be responsible for accidents day of sale or items after sold.

10% Buyer premium on all items sold.



Okemos, MI
517-394-3006
E-Mail: melw21588@gmail.com
Web: www.melwhiteauctioneer.com

JANE DOTY AUCTION SATURDAY, MAY 23, 10:00 AM

LOCATION: 3156 BENTON RD.

DIRECTIONS: I-69 to the Pottsville M100 exit #66, north on M100 to Vermontville Hwy., west on Vermontville Hwy. 5 mi. to Benton Rd., south to the sale.

**CHARLOTTE, MICHIGAN 48813 zone
5**

I have sold my home and will sell the following at public auction.

COLLECTIBLES: 2 Hummel bells, Cinderella, 56/B, 56H, 2 1976 409,15; Buttons; 2 Arizona glass & brass cactuses; Cast-iron horse hitching post. **HOUSEHOLD:** Hitachi 48" wall mtd. TV; Asst. kitchen ware; Howard Miller grandfather curio clock; 4 pc. Book-case set; China cabinet; 2 King box spring & mattress sets; Double & Queen quilt & shams; Cow & Christmas hand-painted pictures; 2 Bombay chests; Christmas decorations; Schwinn Stingray bicycle; Assorted crockery items. **POLE BARN:** StowMaster 5000 tow bar; (2) 30# Cannisters 134A refrigerant; Emglo electric contractor air compressor; Wagner airless paint sprayer; Reddy Heater 70,000 btu salamander; Lincoln 225 arc welder; Master Force bench vise; 2 Steel welding tables on casters; Michelin floor jack; OEM Tools transmission jack; Man Lift hyd. lift; Graco Fire Ball grease pump; Bill-Jax 2 sections scaffolding; XTend PRP 2000 power rack & pinion 2000; Meber 320 table bandsaw; Ex-Cel 2T had engine lift; Appliance cart; Construction pickup toolboxes; 2 Kubota rear Galaxy Turf Special 22.5 LLX16.1 & 2 front12LIX16.R3 tires & wheels. **AUTOMOTIVE:** 1985 Chevy Rodster, for parts; Kawasaki K4020004 3 wheel motorcycle, dis-assembled; GM & Ford & other auto engines; 1986 Suzuki motorcycle for parts JS1VP51A7G2101924; 1965 GMC step side pickup (no title); 1960's? GMC 1T truck w/o box (no title); Pacific Coachworks DiNapoli Coupe fenders NOS; EZ-GO Industrial truck; Car body parts, used; GMC Top Kick cab; Several used engines. **OTH-ER ITEMS:** Light fixtures, new & used; Supercube white fiberglass blowing insulation 12 bales; Assorted interior/exterior doors; Glacier Water display w/purifier; Well Mate fiberglass storage tank; 80 Plus NG furnace new in box; Assorted scrap metals; Four drawer fire safe; Many other items.



TERMS: Cash, check, credit cards w/3.9% user fee. 10% Buyer's premium on all items sold. All items will be sold as is.

The seller nor the auctioneer will be responsible for accidents day of sale or items after sold.



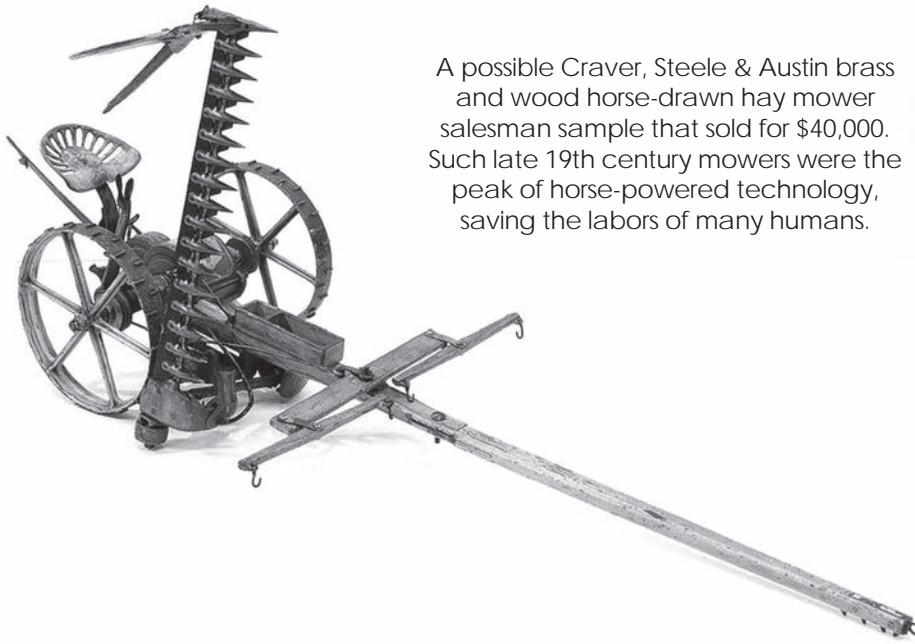
Okemos, MI
517-394-3006
E-Mail: melw21588@gmail.com
Web: www.melwhiteauctioneer.com

Brass and wood salesman sample of hay mower reaps \$40,000

BY RICHARD JUNGER

SHIPSHEWANA, Ind. — Mechanical farm implements were a major innovation of the Industrial Revolution, but to get word of the new mechanical marvels to farmers, the implement companies hired salesmen. In turn, the only way for a salesman to show the newest invention to a farmer before there were printed catalogs and brochures was a small physical representation. Hand held and generally ranging in size from 12 to 24 inches, the miniatures were not toys but actual full working models, painstakingly handmade in brass, metal, and wood to demonstrate, persuade, and ultimately sell their full-sized counterparts.

A variety of surviving salesman samples sold at an auction conducted by Chupp Auctions in March.



A possible Craver, Steele & Austin brass and wood horse-drawn hay mower salesman sample that sold for \$40,000. Such late 19th century mowers were the peak of horse-powered technology, saving the labors of many humans.

Prices listed do not include the buyer's premium or sales tax.

Top seller was a salesman sample brass and wood horse-drawn hay mower with a wooden case that was hammered at

\$40,000. Possibly tied to the Grinnell, Iowa, firm of Craver, Steele & Austin that produced mowers in the 1870s and 1880s, it reproduced not just the form but the complete function of the full-sized mower. The

\$40,000 auction result underscored both the rarity and appeal of an intricately handmade miniature mechanical object.

Industrialism created a quiet revolution in hay storage in 19th century American barns. From hand pitched floor piles,

Left: A horse-drawn hay tedder sample sold for \$27,500. Tedder was an old English word meaning to spread out or distribute newly-mowed grass so it could field dry.



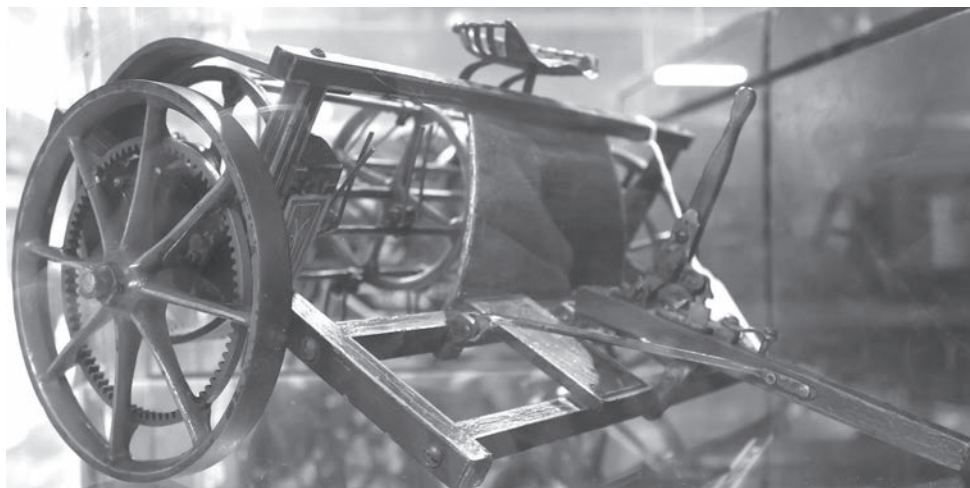
Above: A Syracuse, N.Y., Whitman & Barnes Co. overhead track hay car helped move hay from a barn floor into a top mow or loft. The pull of a rope replaced a block-and-tackle system that required several men. This sample sold for \$30,000.

manufacturers like Whitman & Barnes of Syracuse, N.Y., created overhead track systems that moved and stored hay. A hay car was a wheeled carrier that traveled along an inside barn track and lifted fork or grapple-full of 300 pounds of loose hay into an upper-level mow or loft. Their

1893 patented nickel-plated Diamond car drop pulley salesman sample sold for \$30,000.

Horse-drawn hay tedders spread freshly-cut grass so it could cure into hay in a field. A brass and

See Chupp Auctions page 13



BAILEY SAND & GRAVEL

6505 West Michigan Avenue, Jackson, MI 49201

Inspections: Wed, May 20 & Tues, May 26 (1-3pm) Load Out: Thur, May 28 (10am-1pm)



CARR BROTHERS & SONS

14555 Elm Row Road, Albion, MI 49224

Inspections: May 20 (11am-1pm) & May 26 (3-5pm) Load Out: May 29 (10am-2pm)

You'll find dozens of units in these inventory reductions!

ONLINE AUCTIONS
WEDNESDAY, MAY 27

SHERIDAN
REALTY & AUCTION CO.
(517) 676-9800
SheridanAuctionService.com

CURRIE
AUCTION
WE'LL GET IT SOLD
FIREARMS

AUCTION THURSDAY, MAY 21, 10:00 AM

LOCATION: 17599 230TH AVE.

DIRECTIONS: From Big Rapids, MI Take West Ave. a/s/k as Fairgrounds road and 17 Mile Rd go west to 230th Ave. go North 1/2 half mile to sale site.

LOOK FOR AUCTION SIGNS
BIG RAPIDS, MICHIGAN **zone 2**

John Deere 2020 Tractor; John Deere X730 Lawn Tractor; Single Axle Trailer 5'-6"x6'; Single Axle Tilt Bed Trailer 6'-6"x10'; Appalachian 24' Gooseneck Trailer. **GARAGE/TOOLS:** Air Compressor; Acetylene Tanks; Torch; Angle Grinder; Skil Saw; Fiberglass 4' Step Ladder; Fiberglass 8' Step Ladder; Aluminum 6' Step Ladder; Troy-Bilt 6000 Watt 8250 Generator; Honda 2000 Generator; Gooseneck Trailer Hitch. **LAWN & GARDEN:** Yard Tools - Shovels, Rakes, Loppers; Metal Wheelbarrow. **CHAINSAWS:** Stihl MS170; Stihl BG 85; Stihl HS 45; Stihl 028 Av Super; Husqvarna Battery Powered Chainsaw, Blower; DR 22" Power String Trimmer; Snowblower; 3 Pt. Tractor Hoist; Brush Hog; Agri-Fab Yard Vacuum; Pole Barn Steel (few pcs.); 30' Antenna Tower; Pressure Washer. **HOUSEHOLD:** Large Appliances Chest Freezer, Front Load Washer & Dryer, Refrigerator; Pictures; Wicker Baskets; Robot Vacuum; Ceramic German Beer Mugs; Set of Six German Wine Glasses; Japanese Tea Service Service for Six (24 pcs.); Cream - Fluted Pottery; German Wine Decanters & Glasses; German Domed Table Clocks; Royal Prince Glass Ship in Bottle; Mount Clemens Pottery; A&W Mugs; Kaiser Pottery from Germany; Crystal & Porcelain Vases, Candle Holders, Bells; Pyrex & Corning Ware Dishes, Bowls; Canning Jars; Christmas Decorations, Lighted Star, Nativity Scene; St. Francis Statue. **ANTIQUE/VINTAGE:** Liberty Dairy Rack; Wooden Rotary Dial Telephone; Kids Fisher-Price Tool Set; Lap Zither/Harps; Violin-Uke Marx Musk Co. No. 8281; Croquette Set; Picnic Baskets; Draw Shave, Hay Knife, Horse Evenr, Corn Planter; Floor Lamps, Dinner Bell; Steel Runner Sled; Sunbeam Kitchen Mixer; Bingo Cards & Games, Wooden Dominoes; Glass Pie Plates, Milk Glass; Sewing Machines; Upholstered Dining Chair; Cast-Iron Ashtray Stand; Toy Semi Dean Foods Truck & Trailer. **FURNITURE:** Wooden Wall Shelves; Wooden Dining Chairs; Oak End Tables; Twin Bed; Bookshelves & Cases; Upholstered Couch; Oak Drop-Leaf End Table; Wooden Podium; Folding Display Rack; Buffet; Other Items to Numerous to mention. and Jewelry Wagon.

AUCTIONEER NOTE: These 2 neighbors have sold their homes so we are selling 2 Living Estates Carl Walston and Fitzgerald. This is a very nice and clean sale everything has always been undercoverinside. For parking pull in driveway and park in back of the house, lots of room. Very, Very nice sale.

CURRIE AUCTION SERVICE
15398 220th AVE., BIG RAPIDS, MICHIGAN 49307
231-629-4745

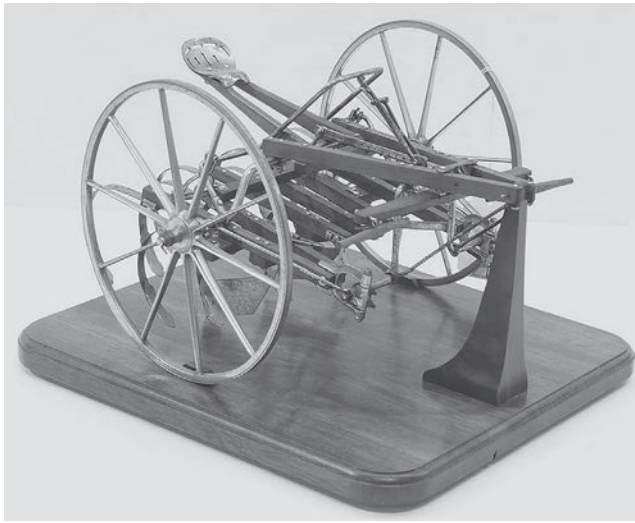
Website: www.currieauction.com

Chupp Auctions

FROM PAGE 12

bentwood salesman sample with strong original paint from an undetermined regional manufacturer sold for \$27,500. Its spoked drive wheels, exposed gearing, and rotating tines faithfully reproduced a full-sized late 19th century tedder. The piece allowed a salesman to demonstrate not just the machine's form but its exact motions, how the turning wheels powered the lifting action that transformed heavy swaths into evenly spread hay.

An Adriance horse-drawn sickle-bar mower came in at \$25,000. Adriance, Platt & Co. of Poughkeepsie, N.Y., was at the forefront of the 1890s farm machinery rage, producing a widely known line of mowers and reapers. Their machines translated the forward motion of a horse-drawn implement using gears and cranks to drive a horizontal cutter bar that sliced through heavy grass like butter. The company was absorbed in the consolidation that created



Above: A circa 1900 S. L. Allen & Co. or John Deere cultivator sample sold for \$15,000. The adjustable wheels ran between crop rows, set wider for corn or narrower for potatoes and beans.

the International Harvester Company in 1902.

As late 19th century farming evolved into larger, market-oriented single crops, agricultural implements such as an Adriance horse-drawn grain reaper became more necessary. With most of its original paint, a brass and wood sample stamped "52" and with a dealer tag from Milwaukee, Wis., sold for

\$22,500. Another numbered brass tag suggested the piece was factory issued or had an early catalog designation.

Miniature manufactured farm models didn't always have to be salesman samples to be interesting to collectors. A brass, painted metal, and wooden horse-drawn hay mower circa 1908 that sold for \$17,000 was probably a demonstra-



Above: A brass, metal, and wood horse-drawn hay mower demonstration piece circa 1908 sold for \$17,000. A page from the original U.S. patent application is at the bottom left.

tion piece for its inventor, one Canadian Charles W. Robinson. He was granted a patent in 1908 for a mower that had a more adjustable sickle-bar blade. The piece was accompanied with American and Canadian patent documents and pictures of his other inventions.

A row-crop cultivator was one of the most important horse-drawn implements in a late 19th cen-

tury farm barn. Designed to work the soil between planted rows, a cultivator loosened earth, controlled weeds, and helped retain soil moisture at a time when chemical herbicides and irrigation didn't exist, especially for crops like corn, potatoes, and edible beans. With nickel-plated metal and a walnut display base, a circa 1900 S.L. Allen & Co. or John Deere cultivator salesman sample sold for \$15,000.

Salesmen carried samples for the farmer's wife as well. A sample Standard Co. barrel-sized butter churn was hammered at \$6,000. A locking lid allowed more vigorous hand churning



Above: A circa 1895 Standard Churn Co. barrel-sized butter churn sample was hammered at \$6,000. The Wapakoneta, Ohio, company helped make its hometown the "churn capital of the world" before commercial dairies began selling butter.

and prevented spills and made for more consistent butter. Such features could be demonstrated on a salesman's sample.

On the auction's opposite side, salesman's samples began to disappear when printed catalogs and brochures gained popularity in the early 20th century. A circa 1930s 31-by-29 inch Masonite board with actual-sized and cataloged gate hardware samples was auctioned for \$150.

For more information visit <https://ch auctions.com/>

Byrum

ESTATE AUCTION

Friday, May 22, 2026 • 12:00 Noon

**PRIMITIVES • VICTORIAN FURNITURE • MOBILITY SCOOTER
TOYS • SHOP ITEMS • COINS & VG JEWELRY & MORE**

Located 1 mile east of downtown Nappanee, Ind. on Market St. (US 6) to Oakland Avenue, then 4 blocks south at the Hahn Auction Building 401 S. Oakland Ave. Nappanee, IN 46550

Super Nice Oak 2-Shelf Étagère Magazine Stand; Spoon-Carved Walnut Parlor Stand; Varied Press Back Rockers; Victorian Chairs; Very Nice Glass Ball Claw Foot Organ Stool; Super Cherry Fancy Leg Dining Drop Leaf Table; Early Step Back Cupboard in Walnut, Missing Drawer; Varied Pictures; Large Glass Ball-Footed Parlor Table; Oak Curve Glass Side and Front China Cabinet; Very Nice Oak 5-Legged Square Dining Table; Glass Top Tray Rolling Tea Cart; (2) Artichoke Wood Grain Pedestal Bed, One Twin and One Full, Both with Mattress and Springs; Nice Orderly Fruit Bowl 3-Drawer Oak Commode; Old Wooden School Desk; Very Fancy 4-Drawer Chest of Drawers with Hanky Boxes; Davis No. 3 Swing Churn; Box Churn; 6' Vintage Oak Showcase; Tub Stands; Wringers; Graniteware; Galvanized Tubs; Old Primitive Individual Corn Planters; Hay Knives; Ice Tongs; All Types of Vintage Kitchenware; Canning Jars; Vintage Canning Jars; Large Amount of Varied Advertising Products from the '20s; New Local Flour Bags; Super Sweet Seed Bags; Pulleys; Milk Cans; Old Primitive Varied Barn Siding Shelves; (2) Sets of Oak Lateral File Drawers; Electric Lift Chair; Electric Mobility Scooter; Canon Cameras (New); (3) Heavy Duty Pepsi Storage Shelving Units; (3) Gray Metal Shelving; (3) Metal File Cabinets; (5) Metal Misc. Cabinets; (2) RC Cola Display Shelving; Large Copper Fire Extinguishers; Safe; 100+ DVD, VHS, CDs (Many Never Used); (2) 8' & 6' Glass Display Cabinets; Cement Fox; (2) Antique '50s Bar Stools; Patio Chairs; Tons of Acrylic Display Risers, Frames, Plate Holders; Several Display Cases; Several Glass Display Cases; Picture Frames (New) 100+

GARAGE: Power Washer (New); Scaffolding; Air Compressor (New); Craftsman Tool Chests; Craftsman Hand Tools; Power Tools; Metal Cabinets; A Lot of New Gloves, Glasses, Etc.

POCKET WATCHES, COINS, JEWELRY & TOYS: (98) \$1 Silver Certificates; (19) \$5 Silver Certificate; (6) \$2 Red Letters; (1) \$5 Large Bill 1913; (1) 1882-CC Morgan; (8) Morgan Dollars; (6) Peace Dollars; (96) Franklin Halves; (97) Washington Quarter 1940s-1950s; (33) Washington 25 Cents '40s and '50s; (20) Jefferson 5-Cent Nickels; (6) Barber Halves; (10) Barber Quarters; (8) Walking Liberty Halves; (17) Indian Head Cents; (24) Barber Dimes; (40) Standing Liberty Quarters; (2) Studebaker 10 Years; (2) 15-Year Pins; (1) Studebaker Lapel Pin and (1) Rocco Lapel w/Stone; Varied Sterling Pieces Including Fantastic Heavy Jade and Sterling Gold Chains; Cameos; Old Porcelains; Rockville Key Wind Pocket Watch; Gold 17 Jewel Hampden Pocket Watch and Other Pocket Watches; Men's 1952 and Women's 1954 Gold Class Rings; Lots of Chains, Bracelets and Costume Jewelry

TOYS: International Pedal Tractor; Die Cast John Deere 8430 T Tractor; Versatile 936 Scale Model Tractor; Ertl Case Tractor with Front Wheel Assist; Wheel Horse Semi; Precision Series Case 1030 Western Special; Minneapolis Moline G5 50 Tractor; Oliver 1555 Diesel Tractor; 1/16 Scale Oliver 2255; Other Various Toy Semis; Miscellaneous Tonka Toys; Nylint Trans Tanker Semi Farm Bureau Co-Op; Other John Deere, International, Oliver and Other Brands 1/50 Scale Toys; Large Amount of Hot Wheels Sets; Star Wars; Jensen Style #65 Steam Engine; Lord Of The Rings; Legos; Other Marvel Toys; Santa Fe Express Train and Much More Misc. Glass

The former property of Ronald & June Byrum, deceased & Others

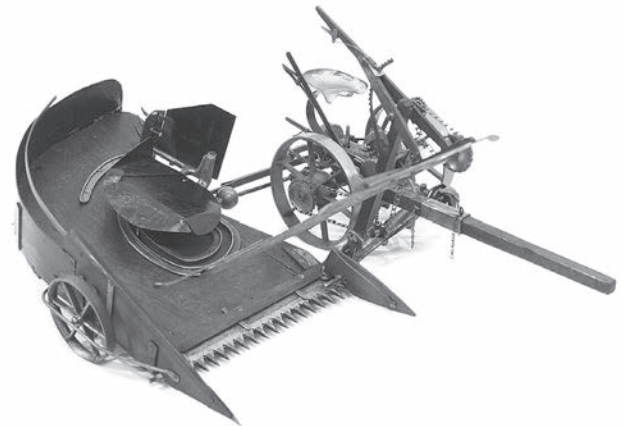
HAHN
hahnrealtyauction.com
AC39800021
Phil Hahn - (574) 535-3783
IN Lic. #AU01012967

Jason Hahn
(574) 536-7682

Brian Wuthrich
(574) 268-4940 - Milford, IN

Office (574) 773-8445 • Nappanee, IN

— Terms —
Cash or Check w/proper ID
Credit Card with Convenience Fee
10% Buyer's Premium
Any announcements made
day of sale take precedence
over printed matter



Above: An Adriance horse-drawn grain reaper sample sold for \$22,500. The curved cutting platform accumulated enough grain stalks in a minute that the reaper had to be driven slowly so the stalks could be bundled and tied.

Below: Colorful implement catalogs also reduced the need for salesman samples. An early competitor of the better-known McCormick and Deering implement companies, Plano Manufacturing became part of the new International Harvester combination in 1902.

PLANO
BINDERS
MOWERS
HEADERS
REAPERS
HAY RAKES
SICKLE GRINDERS.

THE PLANO MFG CO.
CHICAGO, U.S.A.

RICHARD IRWIN LIVING ESTATE

from 'The Reliquary' in Shepherdstown, WV

to be sold at auction on

JUNE 6, 2026

Beginning at 10:00 AM

Auction to be held at the Chupp Auction Center,
890 S Van Buren St, Shipshewana, IN 46565
Preview available Friday, June 5 from Noon to 5 PM
and beginning at 8 AM day of the auction



CLOCKS: 10+ Tall case Grandfathers including J.J. Elliot, J. Salfer, Flint and O.A. Dohm; 6' monumental Black Forest heavily carved Cuckoo; 5 RARE Waterbury carved oak figural wall clocks; numerous hanging and floor Regulators including Ansonia #18, New Haven #4 and E. Howards; Crystal Regulators; French Moon Face L. Marti & Cie; J.C. Brown Acorn; Camerer Kuss & Co; numerous French 3-pc marble and bronze sets; RARE Eugene Farcot Conical Pendulum Mystery clock; special collection of self-winding Regulators & wall clocks including Stromberg, International and E. Howard; Sidney Carriage advertising clock; 8 Elmer Stennes time pieces; French Industrial mechanical clock; Ithaca calendar clocks; RARE Kirk American organ clock; plus many more!

LIGHTING: 20+ Hanging lights, some with Quezal and Steuben signed art glass shades; many leaded glass mosaic table lamps including Handel, Wilkinson & others; large selection of parlor, banquet & GWTW lamps including B&H, many with good overlay shades!

MUSIC: Mills coin-operated Violano Virtuoso; Regina Corona floor model disc changer coin-operated music box; RARE Kirk American organ clock -one of three known!; Wurlitzer hand-painted Berni Organ Co. Carousel Organ Model 153 -was used at the Carter Presidential Easter Egg Roll; 2 early Polyphon coin-operated disc music boxes;

OTHER: Numerous marble and granite pedestals; Horner tassel table; Herter pedestals; life-size winged Griffin pedestal; numerous Greek and Roman mythological signed bronzes including Moreau, Bouret, Montagne and more; various sizes of oriental rugs!

This will be the first auction of several to disperse this fine lifelong collection!



LYLE CHUPP
260-499-0216
#AU08800826

DALE CHUPP
260-499-0093
#AU19800030

chuppservice@chauctions.com



GREG CARTER
#AU005135
716-307-3405

Bidding will be available on-site and at these websites...
www.CHAUCTIONS.com



FLEA MARKETS • ANTIQUES
EDUCATION • WANTED
COLLECTIBLES • SERVICES
ANTIQUES SHOPS • SHOWS

CLASSIFIEDS

FLEA MARKETS • ANTIQUES
EDUCATION • WANTED
COLLECTIBLES • SERVICES
ANTIQUES SHOPS • SHOWS

SERVICES

MIRROR RESILVERING: Quick Service. 313-521-1888. Frank Wright Glass, 14808 Gratiot. Detroit, MI 48205. Call for quotes. www.frankwrightglass.net

S
Farm, Barn, Rural, Painting Services. Building Restoration and Roof Coatings. PRIME FINISH PAINTING, Commercial. Industrial, Residential. (574) 229-9440. primefinishpainting@gmail.com, PAINTINGINDUSTRIAL.US (3626)

WANTED

WANTED: Always buying rare antique motors. Outboard and inboard also early race boats. E-mail: bjoutboards@gmail.com 989-326-0727 B.J. Pawlaczyk S

WANTED: Corvettes wanted 1953 to 1967 any condition. Collections preferred. Paying a pirate's ransom! Email: terry@proteamcorvette.com Phone 419-592-5086 (4426)

Denotter Auctions
Weekly Online
Estate and Consignment Auctions
Antiques, Collectibles, Vintage
www.denotterauctions.com
224-392-3101



With the best coverage around, how can you afford *not* to advertise?

The Auction Exchange & Collectors News

ADVERTISERS!
Verify that your ad was received! Whether you faxed or e-mailed, call toll-free for verification:
888-339-3795

Since 1978 the Weekly Auction & Collectors Guide for Michigan, N. Indiana and N.W. Ohio

★ VENDORS WANTED ★
Free booth space available @ our
ANNUAL ANTIQUE ADVERTISING SPECIALTY SHOW
March 2026
Located at the Indiana State Fairgrounds, Indianapolis. This is one of the largest markets for only 40+ year old advertising in the world. Signs, displays, clocks, and all other forms of vintage advertising.
For info: IAAshow.com
Contact: damongranger@gmail.com

248-910-6765

INDY ANTIQUE ADVERTISING SHOW
September 2026
Boone County Fairgrounds
1955 Indianapolis Ave., Lebanon, IN
IndyAdShow.com
damongranger@gmail.com



2/2026

Buying? Selling? Promoting?

TRY AN AUCTION EXCHANGE CLASSIFIED!

Classified ads are limited to Antique Shows & Shops, For Sale, Services, Education and Want Ads. • No auction ads or tag sales.

An Auction Exchange classified ad is only \$6.25 per week for up to 15 words and 25¢ for each additional word.

Please print legibly and include name, address or phone number & town as it will appear in print.

Name _____

Street _____ City _____

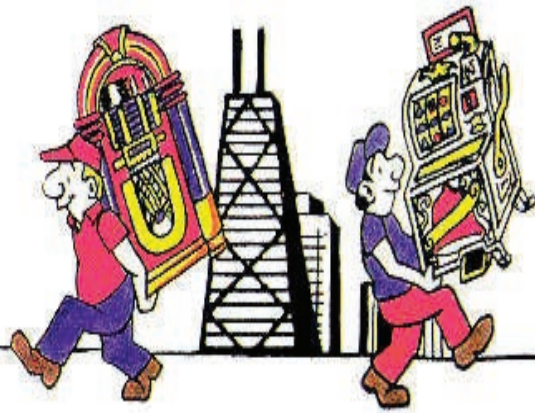
State _____ Zip _____ Phone _____

CLASSIFICATION: (i.e. Wanted , For Sale) _____ Please run my ad for _____ weeks.

YOUR AD, AS IT WILL APPEAR	_____	_____	_____	_____	_____
	_____	_____	_____	_____	_____
	_____	_____	_____	_____	\$6.25
	_____	_____	_____	_____	\$7.50
	_____	_____	_____	_____	\$8.75
	_____	_____	_____	_____	\$10.00
	_____	_____	_____	_____	\$11.00
	_____	_____	_____	_____	\$12.25

All classified ads must be pre-paid
Please send ad with check made payable to The Auction Exchange • PO Box 90 • Knightstown, IN 46148-0090

SINCE 1979



CHICAGOLAND™

2026 SPRING COIN-OP SHOW

ANTIQUUE ADVERTISING, SLOT-MACHINE & JUKEBOX

Friday, May 29th
Shop from 8am - 3pm
\$50 Admission - Good for both days

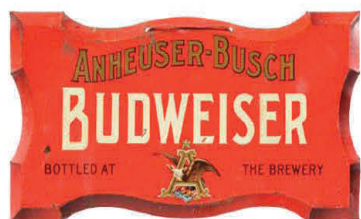


Saturday, May 30th
Shop from 9am - 3pm
\$10 Admission

Don't miss this rare shopping opportunity!

Brought to you by Granger Wolf Promotions

Collectors from across the country will be bringing items from their collections to sell to the public at this sale.



LIMITED TIME ONLY GREAT DEAL!

Scan here to book your stay



SCHAUMBURG
CONVENTION CENTER
1551 Thoreau Dr N,
Schaumburg, IL 60173

For vendor information contact Granger Wolf Promotions
(419) 508-3645 · DWolfCoinOp@gmail.com