

THE AUCTION EXCHANGE®

And COLLECTORS NEWS

\$150

ANTIQUES • COLLECTIBLES • ESTATES • FARM • REAL ESTATE • COMMERCIAL

www.eauctionexchange.com

April 21, 2026

Vol. 49 No.20

ACROSS THE AUCTION BLOCK

Ty Cobb cards hit strong bids at Holler and Hammer

BY RICHARD JUNGER

JACKSON, Mich. — All-time Detroit Tigers centerfield great Ty Cobb batted .366 during his 1905 to 1928 career. He continued to hit hard at a March Holler and



Hammer sports auction. Four different Cobb tobacco cards from 1909 to 1911 were sold. A highly recognizable Cobb “bat on shoulder” series T206 card, with its bold yellow background sold for \$10,000. The PSA 6 grade was an upper-tier condition for a T206 card, even with a “MC” (miscut) qualifier. Eye appeal in person and online was strong enough to command the premium price.

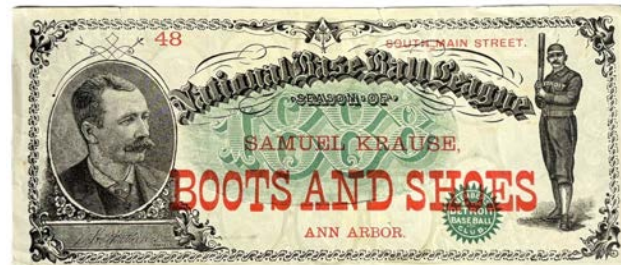
A different T206 yellow Cobb card with a grading drop to VG-EX 4 and with more visible wear, soft corners, and possible surface issues still sold for \$6,000. The hammer price under-

Left: Ty Cobb was one of the most popular players in the 1909-11 Piedmont T206 card set, selling at auction for \$10,000.

scored how strong demand remains for any clean, presentable Cobb T206.

The Cobb T205 issue is popular for its ornate gold borders and rich lithography around a more pleasant visage, but the outside design makes it notoriously condition sensitive. A VG-EX 4 example sold for \$4,250, a respectable for its type price.

A red background T206 Cobb card is arguably the most famous in the entire set, striking, simple, and instantly recognizable. Even in a VG 3 holder, it commanded a strong \$4,000 winning bid because it was viewed as a cornerstone card, one that defined early baseball card art. Its slightly lower grade translated into the lower price, but in terms of visual impact and hobby



Above: A trading card for the National League Detroit Wolverines sold for \$1,200. The team's 1888 version was one of the strongest in the 19th century, with three players in the Baseball Hall of Fame.

status it remains the one Cobb card that many collectors chase first.

Two vintage Topps baseball card sets auctioned well. Compared side by side, the 1956 and 1958 sets offered a study in how condition and completeness shape the card market. The 1958 group, nearly complete and bolstered by a run of 11 graded stars, climbed to \$4,500 on the strength of marquee names like Mays, Aaron,

and Williams. Even missing three cards, it had the feel of a curated set with key pieces singled out and preserved in higher grade.

The 1956 set was complete but entirely raw, a different kind of appeal rooted more in cohesion than condition. Its classic horizontal format and deep roster of Hall of Famers still drew strong interest at \$3,250, but with bidders left to trust their own eye. Together,



Above: Of the four Cobb cards auctioned, this red background version sold at \$4,000 and carried the strongest visual identity.

the two lots illustrated a familiar divide in the hobby, one set shaped for the modern graded market and the other closer to how cards originally

See Ty Cobb Page 10

FEATURE

Collectors won't have to dig far to find construction cards

BY LARRY LEMASTERS

Heavy construction equipment has been used since at least the 1st century BC, when Vitruvius, an ancient Roman engineer, wrote about a crane powered by human or animal

labor in De Architectura. His goal as an engineer was to decrease human labor and employ machine labor.

The earliest practical wind-powered machines, the windmill and wind pump, may be traced to the 9th century AD, to the Muslim world during

the Islamic Golden Age, in what are now Iran, Afghanistan, and Pakistan.

Heavy equipment, today, consists of dump trucks, motor graders, backhoes, excavators, bulldozers, and the list goes on. Most heavy equipment machinery is designed to execute construction work, most frequently involving earthwork operations.

Man has built many heavy equipment machines that are larger than football fields. The Bagger 293, a gigantic German-made bucket-wheel excavator, holds the Guinness World Record for the tallest terrestrial vehicle, standing 315 feet tall and 738 feet long. This machine weighs an incredible 14,200 tons.



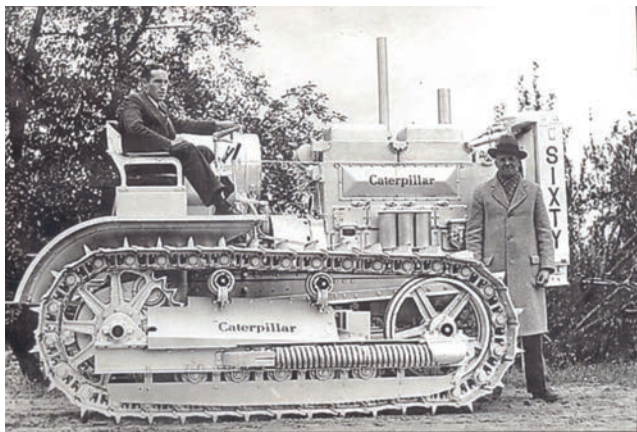
Above: Dam construction postcard, circa 1910, showing train machinery New York, N.Y., (real photo postcard) RPPC and construction of a local dam. This unposted card is valued at \$24.

The earliest ancestors of the Bagger 293 excavator were known as mechanical diggers or shovels. Inventors in the

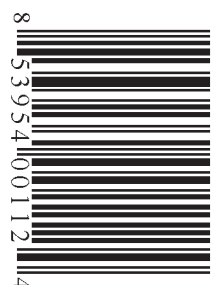
early 19th century patented such primitive machines. In 1835, William Ottis and Charles French, work-

ing from steam shovel ideas from 1796, invented and built the first

See Construction Page 4



Above: This real photo postcard from 1931 shows a dealer advertising a new Caterpillar Sixty bulldozer for sale. This card is valued at \$12.



SINCE 1978 THE WEEKLY AUCTION & COLLECTORS GUIDE FOR THE GREAT LAKES REGION

SPRING SPORTSMAN & COLLECTIBLE AUCTION

"TIMED ONLINE"

SALE ENDS: TUESDAY, APRIL 28TH @ 8:00 PM

SALE LOCATION: GLADWIN, MI 48624 zone 3

"ITEMS CAN BE BROUGHT TO OUR CHARLOTTE OFFICE"

"ITEMS CAN BE BROUGHT TO OUR CHARLOTTE OFFICE"

Get ready for summer! GREAT sale featuring Low Mileage GMC 2500 Sierra, Collector Firearms, Loads Of Ammo, Vintage Sporting Goods, Sporting Advertising, Reloading, Archery, Antique Fishing Lures, Knives, Fishing Spears, Bear Trap, Marble's Gladstone & Olsen Collectibles, Tools, Gun Safe, Plasma Cutter, & Much More. Nationwide Shipping Available.

SALE PICKUP DAYS

GLADWIN - Thursday, April 30, 2026, 10:00 AM - 4:00 PM

CHARLOTTE - Friday, May 1, 2026, 10:00 AM - 4:00 PM



JOHN PECK AUCTIONS

AUCTIONEERS FOR OVER 40 YEARS

We have multiple other quality auctions currently taking place.

To bid & view 1,000's of photos visit johnpeckauctions.com

"Award Winning Auctioneers Since 1979"

(989) 345-4866

LARGE COLLECTIBLE AUCTION

HEAD VASES-FENTON-OLD TOYS-COINS

SATURDAY, MAY 2, 10:00 AM

DOOR OPEN AT 8:30 FOR INSPECTION
 LOCATION: EAGLE PARK HALL, 1443 GRANGE RD.
 DIRECTIONS: I96 to the Eagle exit #84, west to Grange Rd then south to the Fair Grounds.

EAGLE, MICHIGAN 48822 zone 5

This is a private life time collection and all will be sold at public auction.

COLLECTIBLES: Over 278 head vases, (no broken, cracked, or repaired); Mail Pouch Tobacco thermometer (very nice); Fenton figurines & glassware; Oak curved glass China cabinets, large & small; Beauties of the Red Mansion music boxes; 15 Hummel figurines, Rex; Costume jewelry; Effanbee 1982 John Wayne American Guardian of the West doll; 1862 Co K 70th Regiment historical document w/letter of authenticity; Oak fern stand; Brass cannons & soldiers; Western electric wall phone; Red Wolf Lager mirror; Oil bottles; Poodle dog collection; Hall Tea Leaf ironstone collection, baking dishes; Roseville 206-7 Zepher Lily, 123-9 Freesia vases; Flat top trunk; Kewpie figurine collection; Bronze statue on marble base; 2 Griswold fry pans w/lids; Assorted china; Large assortment of deco ware; Tiffany type stained glass lamp; German brass figural clock; Strausberg Manor mantle clock; 1870 Jerome & Co mantle clock; Waltham mantle clock; Gilbert gingerbread mantle clock; Shawnee cookie jar; Murano Glass clown dish; Die cast miniature cars; Empire child's electric stove; Nylint State Highway dump truck; Tonka semi flatbed, steam shovel, road grader, dump trucks; Nylint Michigan crane; Structo dump truck, 66 fuel tanker; John Deere toys; Cast aluminum toys; **HOUSEHOLD:** 3 Seiko musical clocks; Bombay chest; Broyhill loveseat; Curio cabinet; Century battery charger (nib); Sirius Boom Box (nib); Many, Many other items; **COIN CONSIGNMENT SELLS AT 9:30:** 61 Lots with \$1 silver certificates, Buffalo nickels, Mercury dimes, Washington quarters, proof & mint sets, Walking Liberty halves, 2 1oz silver pc's.

TERMS: Cash, check, credit cards. All items will be sold as is. The seller nor the auctioneer will be responsible for accidents day of sale or items after sold. 10% Buyer's premium on all items sold. All items must be removed from hall day of sale.



Mel White 50 Years Service
 Auctioneer + Appraiser

Okemos, MI
 517-394-3006
 E-Mail: melw21588@gmail.com
 Web: www.melwhiteauctioneer.com

PUBLIC AUCTION

SATURDAY – APRIL 25 – 10:00 AM

LOCATION: 4974 146th AVENUE
HOLLAND, MI zone 4

Mr. Boeve has moved and is now selling the contents of his pole building. Dales Auctioneering has been contracted to conduct the auction and to sell all items listed to highest bid.

Viewing will be held Friday, April 24, 4:00-6:00 PM. Off-road parking



TRACTOR/TRAILER/MOWERS: Kubota L3710 w/ LA681 loader, 1066 hrs.; 2024 Aluminum 8x10 drop gate trailer; 2018 Honda Pioneer 500 UTV; JD Z740R-Ztrak Pro 54" zero turn, 207 hours; JD 345 20 hp 54"; 5' King Cutter brush hog; Heavy-Duty Log splitter; 3 pt. 6' back blade; 4 section drag

TOOLS: Generac 4000XL generator; Black Max 5 hp air compressor; Victor torch set; Wilton bench vise; Craftsman stack tool chest; Clarke drill press; Craftsman tools; MAC impact; port a power; Chicago Electric Power miter saw; Craftsman rotary file set; Biscuit joiner; Stihl chain saw; DeWALT SawZall; Keller Steel Rolling Scaffolding; 3T floor jack; Makita 6" grinder; AC Lincoln welder; Power King band saw; Wilton miter saw; Kennedy machinist toolbox; Work Mate 400; steel wheels; hand corn sheller; fiberglass ext. ladder; walking sprinklers; large cast-iron floor register; metal lawn car; Precision Pro lawn thatcher; Kobalt cordless blower; Kobalt String trimmer; Performax belt/disc sander; PLUS, LOTS OF MISC.

Payment cash, check, Credit Card (5% fee).
OWNER: JERRY BOEVE

DALE'S AUCTIONEERING SERVICE, LLC
 The Best in Auctioneering!
 Dale Flokstra, Auctioneer
 (616) 836-3132
 www.dalesauctioneering.com

Rely on experience – serving the public since 1983. We take pride in our business, our reputation is built on customer satisfaction – Let us go to work for you.

SPRING CONSIGNMENT AUCTION

SAT., MAY 16
 10:00A.M.



5075 Russcher Road Holland, MI 49423
 Located 5 miles South of Holland, MI (1 mile west & 1 mile North of Overisel)

Wanted: Consignments

Tractors, Tillage, Farm Equipment, Tools
 Lawn & Garden.

All Farm Related Items...Load Your Trailer,
 We Will Sell Small Items Right Off Your Trailer.



FREE ADVERTISEMENT DEADLINE...MAY 1

(616) 836-3132

(616) 218-7391

SET-UP DATES: May 11-15
 10:00 AM - 6:00 PM



All these items have been consigned from the Late John Van Loo

Farmall Super MTA, fast hitch, live PTO, 14.9x38 – show tractor (won many trophy's); IH Farmall 666; IH Farmall Super H; Interstate 6x10 enclosed trailer; IH 6'x6' fiberglass sign; IH 4'x4' metal sign; Husqvarna zero turn mower; MTD gas edger; many Farmall parts; aluminum ramps; Honda 2000 generators; PLUS much more...



CALL NOW TO ADD YOUR ITEMS TO THE LISTING.

EARLY ADVERTISING GETS MORE BUYERS FOR YOUR ITEMS.



Dale Flokstra, Auctioneer
 5075 Russcher Road
 Holland, MI 49423
 www.dalesauctioneering.com

Rely on experience – serving the public since 1983

We take pride in our business, our reputation is built on customer satisfaction – Let us go to work for you.

Construction

FROM PAGE 1

ever modern-type steam shovel, called the Otis Steam Excavator.

Obviously, due to the enormous size of heavy equipment, few people actually collect pieces of heavy construction equipment. A simpler, and for most collectors, a more satisfying way to remember heavy equipment is to collect postcards depicting heavy equipment and the history of heavy equipment.

Postcards and heavy equipment make interesting bedfellows because both industries grew up together in the 1800s.

The Golden Age of Postcards existed from 1890 to 1915, with the



Above: RPPC showing early crane lifting industrial pipe assembly. This postcard, circa 1915, is valued at \$40.

Chicago World's Fair of 1893 popularizing picture postcards with the Fair's "Official Souvenir postals."

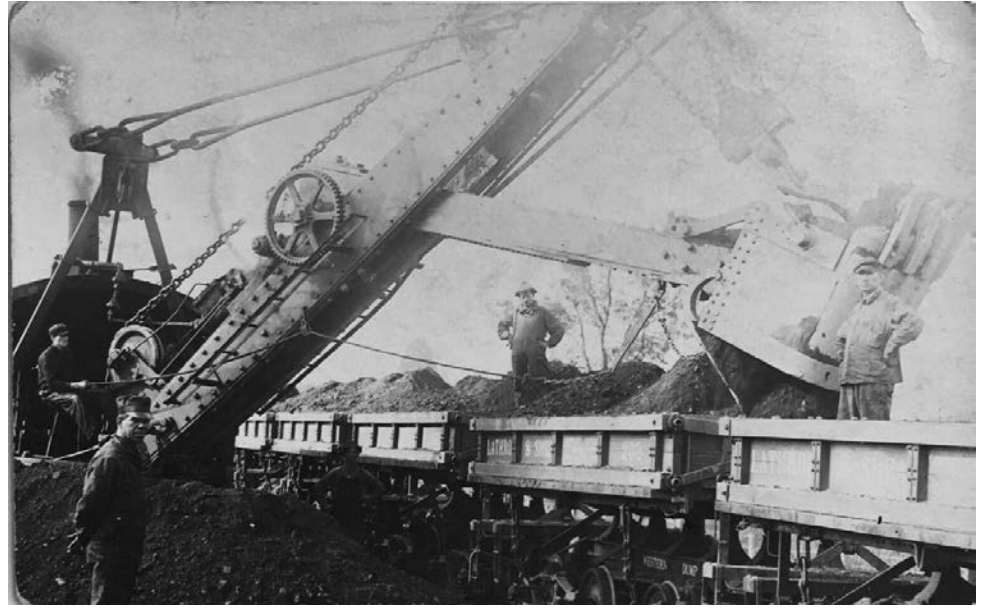
About the same time that postcards were becoming popular, John Froelich, 1892, added forward and reverse

Machines, such as Froelich's, set the stage for the development of today's heavy construction equipment, and this advancing heavy equipment caught the eyes of photographers and postcard manufacturers alike.

One of the earliest photos of a piece of heavy equipment is a photo of the Kilgore Steam Shovel, circa 1897. Kilgore built the first all-hydraulic excavator, and the advertising posters for this excavator should have been used as a postcard a long time ago. The photo is especially nice because it is a real photo, untouched, and real photo postcards (RPPC) are what heavy equipment postcard collectors desire most.

Heavy equipment postcards are, for the most part, inexpensive, so collections may be established for under \$10 per postcard. Many collectors search for and collect heavy equipment postcards about equipment they once operated, making the hunt fun and exciting.

For instance, if you have ever operated heavy equipment on a dam building project, then postcards showing construction of Hoover



Above: This RPPC from 1913 shows a New York crane loading Lathrop & Shear cars. This postcard is valued at \$30.



Above: Photo and advertisement for the Kilgore Steam Shovel, circa 1897, the first all-hydraulic excavator built.

Dam or of a bucket crane loading train cars with debris during a dam's excavation are perfect for your personal heavy equipment postcard collection.

One of the great features of heavy equipment machinery postcards is they are cross collectible. The same card may interest postcard collectors, heavy equipment collectors, history collectors, farming collectors, and construction collectors.

Heavy equipment machinery postcards offer a wonderful, photographic window into mankind's construction past—a simple look from where heavy equipment machinery has come.



Above: Circa 1938, postcard showing early Caterpillar D8 bulldozer with operator. This historic, heavy equipment postcard is valued at \$15.



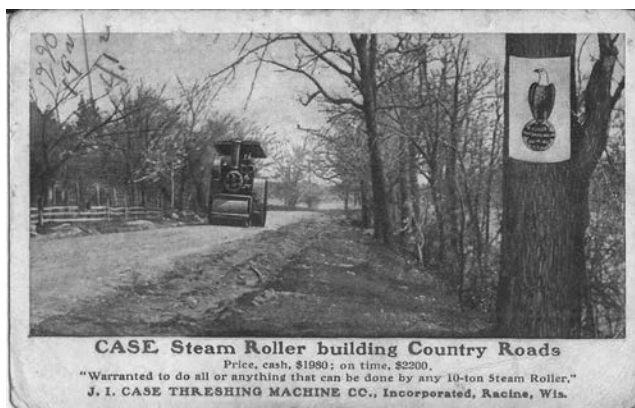
Above: A Caterpillar D7 bulldozer postcard, circa 1960, showing the bulldozer pushing sand in Pasadena, Texas. This card is valued at \$15.



Above: Vintage, Goodyear Barnhart log-loader crew working in Clinton County, Pa. This postcard is valued at \$6.



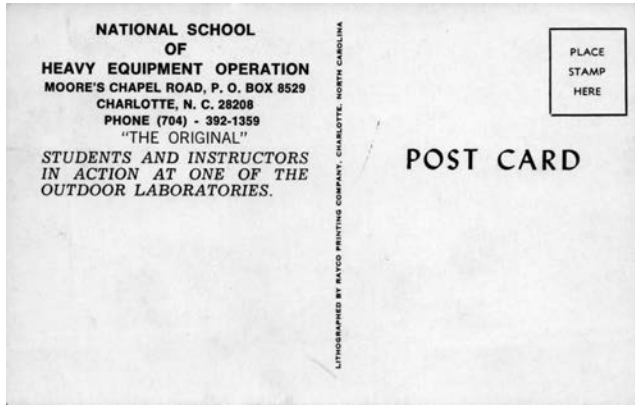
Above: Real photo postcard of dragline operations at a mine in Cripple Creek, Alaska, circa 1950s. This postcard is valued at \$9.



Above: Case Steam Roller building country roads in Racine, Wis., circa 1906. This real photo postcard is valued at \$9.



Above: This "animal" postcard depicts a construction machine designed and built to fill 18 feet diameter tunnels with concrete. Unknown date and location, but this RPPC is valued at \$34.



Above and Right: This National School of Heavy Equipment postcard, circa 1970, shows operation of Caterpillar heavy equipment. This original postcard is valued at \$5.



ORDER FORM

SUBSCRIPTIONS ← → SAMPLE

THE AUCTION EXCHANGE And COLLECTORS NEWS

PO Box 90, Knightstown, IN 46148-0090
Phone Toll Free (888) 339-3795, x134 • Fax (877) 223-3778
info@eauctionexchange.com



Free Sample Copy of *The Auction Exchange & Collectors News*
(One free sample per address per year)

SUBSCRIPTIONS: New Subscription Renewal

- \$42⁰⁰ for 1 year (51 issues)
- \$75⁰⁰ for 2 years (102 issues)
- \$104⁰⁰ for 3 years (153 issues)

Total enclosed: \$.....

Name.....

Address.....

City..... State..... Zip.....

Phone..... Email.....

This is a gift, please send a postcard announcing the gift subscription
From.....

I read *The Auction Exchange* for:

- Auction reviews Articles Advertising Other.....

Mail this completed form with payment to: PO Box 90, Knightstown, IN 46148-0090

CREDIT CARD ORDERS: 800-876-5133

Tony Gregory Publisher

Lorri Egan Publication Mgr./Advertising

Connie Swaim Managing Editor

Tari True Pre-press Manager

Auction Exchange and Collectors News
Published weekly except one week in December
(51 issues) and mailed every Thursday
ISSN: 0279-0950

Published by MidCountry Media, Inc.
27 N. Jefferson St., PO Box 90
Knightstown, IN 46148

Periodicals postage paid at Knightstown, Indiana
and additional mailing offices.

Subscription price: \$42.00 for one year
\$75.00 for two years; \$104.00 for three years

POSTMASTER:

Send address changes to:
The Auction Exchange and Collectors News
PO Box 90
Knightstown, IN 46148-0090

SUBSCRIBERS:

We print the advertisements as sent to us by
the auctioneer. It is not possible to check the
correctness of the listed items, *so before
traveling a long distance for a particular item,
contact the auctioneer first by phone.*

Publishers Emeritus:

John Armstrong, Randy Barz,
Judy Huxmann, Lars Svendsen

Reproduction in any form is prohibited without
the written consent of the publishers.

ALL RIGHTS RESERVED.

Please report late delivery

The Auction Exchange would like to thank our subscribers & advertisers for their patience as we continue to navigate delivery delays caused by the United States Postal Service.

While our logistics team has continuously reported these delays to the Business Service Network managers at USPS, we have yet to see any improvement. As you may have noticed, the late delivery article in *The Auction Exchange* hasn't listed specific cities in many months. This is because there have been 100's cities in Michigan reporting consistent late and non-delivery of their weekly newspapers.

We have decided it is in our best interest to list the contact information for the Business Service Network Managers in the Michigan area that have been receiving the Publication Watches our office files to notify USPS of service problems.

We here at MidCountry Media have also filed complaints with the Postal Regulatory Commission, The Postal Board of Governors & Consumer Affairs pertaining to the consistent, unsolved, delivery problems in the state of Michigan. We continue to work toward a solution. In the meantime, *The Auction Exchange* is available online at **EAuctionExchange.com**.

- MI USPS BSN Amber VanVolkinburg – 616-776-6143
- MI USPS BSN Tanisha Dorsey – 313-225-5422
- MI USPS BSN Tanisha Welch-Rabb – 313-225-5425
- MI USPS BSN Terrance Reynolds – 313-225-5426
- MI USPS BSN Milli Kay – 888-276-1293
- MI USPS Michigan Metroplex – 248-457-4074

GENERAL ADVERTISING INFORMATION

➔ **DEADLINE IS TUESDAY AT 12 NOON**

----- Unless otherwise noted -----

ADVERTISING SIZES AND RATES

- 1/8 page (5"Wx4"H) - \$83.80
- 1/2 page (10¼"Wx8"H) - \$315.56
- 1/4 page (5"Wx8"H) - \$157.77
- Full page (10¼"Wx16"H) - \$546.15

Call for additional sizes and rates 888-339-3795

Open Rate

Our open rate is calculated at \$7.33 per column inch. Call for more information about our Low Cost Standard Open Rate (\$6.98/col.) which is based on a minimum of 10 point type in the body copy.

Display Advertising

Each page is six columns wide (10-1/4 inches) by 15-1/2 inches high. Each column is 1-5/8 inches wide. We use a minimum of 10 pt. type (for body copy) for purposes of readability, and specific point sizes for heading (24 pt.), date (18 pt.), city/state (16 pt.) so please keep this in mind as you plan your ad. We typeset your ad to fit our specifications while keeping in mind your requirements and the need to minimize the cost of your ad.

Back Cover Ads: Back cover ads are booked in advance by reservation - call for availability.

Deadlines/Sending Copy: Our deadline is 12 noon on the Tuesday before the issue date, (Tuesday). All material must be received by this time, including photographs. (*Call for holiday schedules.*) A 10% surcharge will be added to display advertising received Tuesday between 12 Noon and 3:00 p.m. We cannot always guarantee insertion of late ads. In all cases, it's a good idea to call and notify us that an ad is being sent, and to confirm that your ad has been received.

Mail Your Copy: 27 N. Jefferson St., Knightstown, IN 46148.

Fax Your Copy: You may fax your ad to us at: 877-223-3778.

E-Mail: Please send "Text Only" format, we cannot use files that have been saved in their native software.

Email address:
info@eauctionexchange.com

Photos: should be sent in JPG format, as attachments to E-mail. We accept color, or black and white.

Accuracy: Every effort is made to ensure the accuracy of your finished ad. Sending it to us well in advance is essential in allowing adequate time for proofing and faxing layouts to you for approval. We assume no guarantee or liability concerning the accuracy of published advertisements

ISSUE DATE	DEADLINE (NOON)
APR. 28	TUES., APR 21
MAY 5.....	TUES., APR. 28
MAY 12.....	TUES., MAY 5
MAY 19.....	TUES., MAY 12
MAY 26.....	TUES., MAY 19
JUNE 2.....	TUES., MAY 26
JUNE 9.....	TUES., JUNE 2
JUNE 16.....	TUES., JUNE 9
JUNE 23.....	TUES., JUNE 16

ZONE MAP

This zone map is a feature of *The Auction Exchange & Collectors News* and is designed to make it easier for you to locate events throughout the region. You will find the Zone symbol following the city and state in the heading of each ad. This symbol will correspond to the zone map shown here.

UPCOMING AUCTION CALENDAR

JANUARY FEBRUARY MARCH APRIL MAY JUNE JULY AUGUST SEPTEMBER OCTOBER NOVEMBER DECEMBER

The Upcoming Auction Calendar is a listing of future Auctions beyond the current week.

Auctioneers: This service is provided at no charge. As with everything - we do our utmost to make sure that your Auction is listed in a timely and accurate fashion.

For our Readership: For more thorough listings contact the Auctioneer personally and tell them where you saw their ad!

ZONE 2

Sat., May 2, A Yoder Auction, Tool, HH, Misc., Mecosta, MI
 Sat., May 2, Jim Lambert Auctioneers (MI), Moving, Cadillac, MI
 Sat., May 9, Jim Lambert Auctioneers (MI), Farm, Benzonia, MI

ZONE 3

Sat., May 2, Yoder Bros Auction Service, Farm, Gladwin, MI

ZONE 4

Tue., Apr. 28, Stantons Auctioneers, Miscellaneous, Allegan, MI

Wed., Apr. 29, Miedema Auctioneering, Farm, Baroda, MI

Thu., Apr. 30, Art Smith Auctions, Farm, Kent City, MI

Thu., Apr. 30, Dales Auctioneering Service LLC, Tool, Tractor Parts, Saugatuck, MI

Sat., May 2, Rosema Auction Services, Farm, Trucks, Antqs., West Olive, MI

Thu., May 7, Braun & Helmer Auction Service, Estate, Climax, MI

Sat., May 16, Dales Auctioneering Service LLC, Spring Consignment, Holland, MI

Thu., May 21, Dales Auctioneering Service LLC, Tool, Misc., Holland, MI

Sat., May 30, Dales Auctioneering Service LLC, Tool, Holland, MI

Sat., Jun. 6, Dales Auctioneering Service LLC, Tool, Auto, Zeeland, MI

Fri., Jun. 12, Stantons Auctioneers, Firearm, Hastings, MI

Sat., Jun. 20, JP Auction Sales Service, Auto, Tools, Eng., Holland, MI

Sat., Jul. 11, JP Auction Sales Service, Auto, Tool, Eng., Holland, MI

ZONE 5

Sat., May 2, Bob's Coins Auction, Coin, Athens, MI

Sat., May 2, Mel White Auctioneer, Coin, Coll., HH, Eagle, MI

Fri., May 8, Yutzy's Auction Service, 2 Day Consignment, Charlotte, MI

Sat., May 9, Hanson Auction Service, Farm Equip., Antique, Blanchard, MI

Fri., May 15, Holler & Hammer LLC, Coca Cola, Jackson, MI

Sat., May 16, Holler & Hammer LLC, Gas, Oil, Jackson, MI

Sat., May 16, Mel White Auctioneer, Estate, Charlotte, MI

ZONE 6

Thu., May 14, Braun & Helmer Auction Service, Estate, South Lyon, MI

ZONE 8

Tue., May 12, Hahn Auction Service, Electrical Company, Mishawaka, IN

ZONE 12

Sat., May 2, Whalen Realty & Auction, RE, Equip., Misc., Grand Rapids, OH

LIST YOUR UPCOMING AUCTIONS FREE!

Day	Date	Auction Company	Type of Auction	Town	State

Mail to: The Auction Exchange & Collectors News
 PO Box 90, Knightstown, IN 46148-0090

MONTNEY "LIVE ONLY" ESTATE AUCTION

SALE DATE: **FRIDAY, APRIL 24, 2026**
@ 10:00 AM

SALE LOCATION: 6393 S. EBERHART AVE.

CLARE, MI 48617 zone 2



NICE OLD SCHOOL LIVE IN-PERSON AUCTION FEATURING:

Kawasaki Mule 4WD UTV (465 one owner hours) stored indoors, farm equipment, Lund aluminum fishing boat, flat bottom fishing boat, enclosed trailer, gun safe, lots of nice tools, antiques, farm primitives.

AUCTIONEER'S NOTE: Due To The Passing Of William Montney, The Following Will Sell At Live Public Auction. Located: 4 Miles North of Clare On Old 27 (Clare Ave.) To Dover Rd., Then East 1 Mile To Eberhart Ave., Then North 3/4 Mile. Make Plans To Attend This Well Rounded "Live" Estate Auction, In A Nice Country Setting. Your Attendance Is Appreciated.



We have multiple other quality auctions currently taking place. To bid & view 1,000's of photos visit JohnPeckAuctions.com
 "Award Winning Auctioneers Since 1979"
 989-345-4866

VANDER SLOOT FARMS ESTATE ONLINE AUCTION

ENDS: **TUESDAY, APRIL 28**
 COOPERSVILLE, MI



- Tractors**
 - John Deere 6615 Tractor
 - Case IH Puma 155 Tractor
 - Case 2090 Tractor
- Tillage**
 - Bush Hog SC9000 Field Cultivator
 - Massey Ferguson MF730 Disc
 - Brillion 7 Shank Chisel Plow
 - White 256 13' Disc
 - Brillion Cultimulcher, 15'
 - Kewanee Cultimulcher, 15'
- Planters & Drill**
 - John Deere 7240 Soybean Planter, 11 row
 - John Deere 7000 Planter, 4 row
 - John Deere 7000 Planter, 4 rows
 - International 5510 Grain Drill
- Combine & Heads**
 - Case International 1660 Combine
 - Case International 1063
 - Case international 844 4 Row Corn Head
 - Case IH grain head 20' With Header Cart
 - New Idea 327 2 Row Corn Picker
- Chopper & Forage Wagon**
 - International 830 Chopper With 2 Row Corn Head
- Sprayer**
 - Hardi Sprayer, 40' Booms, 500 Gallon
- Hay Equipment**
 - John Deere 630 Moco
 - New Holland 316 Square Baler
 - Kuhn GA 3200 GT Hay Rake
 - Sit REX 2 GL-302 Teddar
- Grain Dryer & Grain Bin & Augers**
 - New Idea 177 Hay Elevator
 - MFS Grain Bin
 - CF lab 190 Towable Grain Dryer
 - Hutchinson Transport Auger
 - Cardine Transport Auger
- Gravity Wagons**
 - J & M Gravity Wagon On J & M Running Gear
 - Killbros 385 Gravity Wagon with Kory 6072 Running Gear
 - Killbros 385 Gravity Wagon, Extendable Tongue
 - Killbros Gravity Wagon On J & M Running Gear
 - Killbros Gravity Wagon, 12.5L-15 Tires
 - Unverferth 235 Gravity Wagon On Unverferth G10 Gear
 - Huskee Wagon Model T-10 Running Gear
 - Gravity Wagon, 10 Ton Gear, 12.5L-15 Tires
 - Flow EZ Gravity Wagon
 - Gravity Wagon Used For Fertilizer As Wet Bin
- Manure Spreader**
 - New Holland 185 Tandem Axle Manure spreader
- Support Equipment**
 - Hay Wagons
 - John Deere 316 Garden Tractor
 - Killbros Running Gear
 - John Deere Running Gear
 - Gehl Running Gear
 - Gehl 100 Grinder/Mixer
 - Massey Ferguson Silage Blower
 - Wood Splitter



VIEW ALL ITEMS IN DETAIL AND/OR BID AT ORBITBID.COM
 OR CALL OUR OFFICE AT 616-261-4987.

WEEKLY Auction Calendar

The Weekly Auction Calendar is provided as a service for our Advertisers and Readers. We make every effort to ensure accuracy of the calendar but always refer to the complete Ad to verify the Calendar information. Unless specified by the Auctioneer in writing we reserve the right to designate the 'Type' of Auction listing. © INDICATES THE AD APPEARS IN SECTION 2 OF THE PAPER

DATE	TIME	AUCTIONEER/SRV. CITY	TYPE	PAGE/SEC.
ZONE 2 MICHIGAN				
Fri., Apr. 24	10am	John Peck Clare, MI	Tool, Antq., Misc.	6
Sat., May. 2	10am	A Yoder Auction Mecosta, MI	Tool, HH, Misc.	12
Sat., May. 2	10am	Jim Lambert Cadillac, MI	Moving	13
ZONE 3 MICHIGAN				
Fri., Apr. 24	9:30am	Yoder Bros Gladwin, MI	Farm	12
Sat., Apr. 25	10am	Lets Talk Auction Mio, MI	Sportsman, Gun, Misc.	13
Sat., May. 2	10am	Yoder Bros Auction Gladwin, MI	Farm	12
ZONE 4 MICHIGAN				
Thu., Apr. 23	4pm	Dales Auctioneering Holland, MI	Furniture, Misc.	13
Apr. 23-25	•	Stantons Auctioneers Hastings, MI	Music Machine	8
Sat., Apr. 25	10am	Dales Auctioneering Holland, MI	Tractor, JD, Misc.	3
Sat., Apr. 25	10am	Kendall Tobiasse Hastings, MI	Antq., Coll., Misc.	13
Tue., Apr. 28	10am	Stantons Auctioneers Allegan, MI	Miscellaneous	8
Wed., Apr. 29	10am	Miedema Baroda, MI	Farm	11
Thu., Apr. 30	10am	Art Smith Auctions Kent City, MI	Farm	11
Sat., May. 2	9:30am	Rosema Auction West Olive, MI	Farm, Trucks, Antqs.	9

DATE	TIME	AUCTIONEER/SRV. CITY	TYPE	PAGE/SEC.
Thu., May. 7	10am	Braun & Helmer Climax, MI	Estate	7
Sat., May. 16	10am	Dales Auctioneering Holland, MI	Spring Consignment	3
ZONE 5 MICHIGAN				
Sun., Apr. 26	Noon	Burns Auction Coldwater, MI	Tractor, Tools	14
Sun., Apr. 26	11am	Randy Ludwick Sturgis, MI	Estate	11
Sat., May. 2	10am	Mel White Eagle, MI	Coin, Coll., HH	3
Sat., May. 9	10am	Hanson Auction Blanchard, MI	Farm Equip., Antique	14
ZONE 12 OHIO				
Sat., May. 2	10am	Whalen Realty Grand Rapids, OH	RE, Equip., Misc.	13
ZONE WEB				
•	•	John Peck Online	Sportsman	2
•	•	Orbitbid Online	Farm	6
•	•	Williams and Lipton Online	Equipment	8
Sat., May 2	10am	Epic Auctions Online	Antq., Art, Misc.	9
•	•	Brad Neuhart Online	Farm Equipment	12
•	•	American Eagle Online	Estate	14
•	•	Wegner Online	Miscellaneous	14
•	•	Everything But The House Online	Miscellaneous	16
ZONE CALENDAR				
Every Wed.	9am	Shipshewana Shipshewana, IN	Antique, Miscellaneous	8

Dale and Rita Davis ESTATE AUCTION

Thursday, May 7th, 2026 at 10:00am

1964 Pontiac GTO 2 Door Soft Top Convertible * 1950's Ford Fairlane 500 Skyliner 2 Door Retractable Hardtop Convertible * Clean 1997 Ford F150 XLT Pickup Truck with 43k Miles * Haulers incl. 1993 Custom Built GMC Top Kick SL Crew Cab Roll Back Project & 1983 Ford F350 Roll Back * Atlas 8,000lbs 110 V 1 Phase 4 Post Vehicle Lift * Clean Textron EZ-Go Green Gas Golf Cart * ATVs incl. Clean 1995 Honda Fourtrax TRX 300 & Polaris Trail Boss 2x4 * Large Selection of Pontiac Parts Collected over 45 years incl. Sheet Metal, Fenders, Deck Lids, Hoods, Bumpers, GTO Engines, Tri-Powers, Rally I and Rally II Wheels, Interior Components, Some NOS Items, Most Parts for 1964 to 1969 GTO or LeMans * Allis Chalmers Tractors Collected Over 25 Years incl. D Series - 10, 12, 14, 15, WD45, B, etc. * Shop Tools & Equipment * Hyster Fork Lift * Household collectibles * Furniture * Bally "Flip Flop" Pin Ball Machine * Paintings * Glassware * Toys incl. Die Cast Tractors, Farm Implements, Manuals * & Much More!

Braun & Helmer Auction Service
 15451 MN Ave E Climax, MI 49034
 Directions: Take I-94 to Exit 92 M-37 and go south towards climax. In 2.4 Miles take a sharp left onto MN Ave E. Auction will be on your left in approx. 0.2 Miles.
 Terms: 10% Buyers Premium * Cash, Check or CC (add 3%) with I.D.
 Questions? Call David Helmer 734.368.1733

Braun & Helmer Auction Service, Inc.
 Brian L. Braun • (734) 996-9135 • Ann Arbor
 BraunandHelmer.com
 David G. Helmer • (734) 368-1733
 Jerry L. Helmer • (734) 368-1734
 Saline

Need to Contact Us?

Call: 1.888.339.3795 ext. 134 for advertising
 Dial Ext. 0 to report late delivery
 E-mail: info@eauctionexchange.com



Shipshewana Auction

ANTIQUe & MISCELLANEOUS AUCTION
Every Wednesday, Year-Round at 9:00 am EST



Items pictured above will sell in our May 6th Antique & Misc. Auction

Preview consignments at AuctionZip.com! Auctioneer ID #1945

We have seller space available. Call (260) 768-4129 to consign items!

www.ShipshewanaTradingPlace.com • (260) 768-4129 • 345 S Van Buren St, Shipshewana, IN 46565

ROBERT BEALL AUCTION

TUESDAY, APRIL 28, 2026, AT 10:00 AM

LOCATION: 3969 - 121ST AVE.,
ALLEGAN, MICHIGAN

Zone
4

Having sold our property, we will sell all of the following including a **Hough 4-Wheel Drive Payloader**, **JD 50 Tractor**, **Dodge Pickup Truck with Snow Blade**, **3-Point Disc**, **Landscape Rake**, **Pallet Forks**, **Trailers**, **Lawn & Garden**, **Chainfall**, **Hand Tools**, **Drill Press**, **Millermatic 35 Welder**, **Generator**, **Chain Saws**, **Floor Jacks**, **Tool Cabinets**, **Woods Three-Point Scraper Blade**, **Home Furnishings**, **Micrometers**, **Mechanic's Tools**, **Sideboard**, **China Cabinet**, **Pellet Guns**, **Backpack Blower**, **Solar Battery Booster**, some household items and more. Watch for updates. **A 10% buyer's premium will be charged on all items sold.**



STANTON'S AUCTIONEERS & REALTORS
144 S. Main Street, P.O. Box 146, Vermontville, MI 49096
Ph. 517-726-0181, Fax 517-726-0060
e-mail: stantonsauctions@sbcglobal.net, www.stantons-auctions.com
Selling all types of personal property and real estate at auction anywhere. Call for a no-obligation consultation to discuss your personal situation.



Stanton's Spring 2026 Music Machine Auction

April 23rd, 24th & 25th, 2026

To be held at: **Barry County Expo Center (Barry County Fairgrounds) Hastings, MI 49058**
Thursday, April 23rd - Luncheon at 12:00(Noon) Sale Begins at 1:00 P.M.
Friday, April 24th & Saturday, April 25th Sale Begins at 9:00 A.M. Each Day

Current Highlights
Mira Grand 18-1/2" Music Box w/matching cabinet, Capitol Cuff "B", Regina Corona 27" Changer, Columbia Toy Graphophone in original and three records, Berliner Coin Operated Disc Gramophone, Berliner Hand-Wind with Slip Clutch Disc Gramophone, Berliner Hand Wind Gramophone with Electric Motor, Edison Standard with Bettini Reproducer, Berliner Krammer & Reinhardt Hand-Wind Gramophone, Edison Factory Flowered Gem, Edison Standard with Polyphone Attachment, Universal Talking Machine Cigar Box Disc Phonograph, Edison Ajax Coin Operated Cylinder Phonograph, Graphophone AG Mounted in Hawthorn & Shelbe Cabinet, Hexaphone.

There is still time to have your item or collection added to this exceptional event. Call us today.

Stanton's Auctioneers, Appraisers, & Realtors
144 S. Main Street, P.O. Box 146
Vermontville, MI 49096
Phone: 517-726-0181



Steven E. Stanton
(517) 331-8150 cellular
E-mail - stevenstanton@gmail.com
Michael C. Bleisch
(517) 231-0868 cellular
E-mail - mcbleisch@gmail.com



ONLINE AUCTION zone web

LOTS BEGIN ENDING: APRIL 28TH @ 11:00 AM
US PATTERN CO., INC. RETIREMENT SALE
69150 SKINNER DR, RICHMOND, MI 48062

INSPECT: APRIL 27TH, 9:00 AM - 4:00 PM

- 2) HAAS MODEL VF-8/50, CNC VERTICAL MACHINING CENTERS (2013 & 2010)
- HAAS MODEL VF - 3, CNC VERTICAL MACHINING CENTER
- 3) FADAL MODEL VMC 6030 HT, CNC VERTICAL MACHINING CENTERS
- 2) FADAL MODEL VMC-4020, CNC VERTICAL MACHINING CENTER (ONE HT)
- 5) OTHER CNC VERTICAL MACHINING CENTERS (2003 BRUTE MODEL 6335-V (1690), 2000 BRUTE MODEL 8740-V (2210), SHARNOA MODEL HPM-85, MITSUBISHI MODEL M - V70C, M700, PRATT AND WHITNEY MODEL TRI MAC VII)
- 2018 KENT MODEL TLR-1340G 13" X 40" HEAVY DUTY PRECISION GAP BED ENGINE LATHE
- PAPPAS MODEL SL90 / 1600, 4-AXIS CNC UNIVERSAL BORING/MILLING MACHINE
- FLEXARM #4 - 9/16", HYDRAULIC TAPPING CENTER
- ASSORTED RADIAL DRILLS & DRILL PRESSES (CINCINNATI BICKFORD "SUPER SERVICE" MODEL 956, MEUSER MODEL M35R, BERGONZI MODEL FS - 1000, SOL-BERGG MEKANISKA VERKSTAFS AKTIEBOLAG SOLBERGA MODEL 24-AH, 2) POWERMATIC MODEL 1200, WALKER TURNER)
- DAKE MODEL 988041-2, ROLL-IN STYLE VERTICAL BANDSAW
- WELLSAW MODEL 1016, 10" X 16" CAPACITY HORIZONTAL METAL CUTTING BAND SAW
- ROCKWELL MODEL 28 - 350, 20" VERTICAL CONTOUR WOOD CUTTING BAND SAW
- CRESCENT WOODWORKING MACHINE VERTICAL WOOD BAND SAW
- DELTA UNI SAW 10" WOODWORKING TABLE SAW
- ROCKWELL DELTA 12" RADIAL ARM SAW
- 4) BRIDGEPORT 1 1/2-HP VARIABLE SPEED VERTICAL MILLING MACHINES
- BRIDGEPORT 1-HP 8-SPEED VERTICAL MILLING MACHINE
- MILLER MODEL 330ST, AIRCRAFTER ARC WELDER
- STERLING MODEL DG, PEDESTAL TYPE MOTORIZED 3/4-HP MOTOR DRILL POINTER / GRINDER
- BOYAR SCHULTZ NO. 612, HAND FEED SURFACE GRINDER
- DEA MODEL IOTA 1103, COORDINATE MEASURING MACHINE
- ROCKWELL 6" WOODWORKING JOINTER
- NORTHWOOD 20" WOODWORKING PLANER
- ELECTRO ARC MODEL 2SA, TAP DISINTEGRATOR
- MAX OSCILLATING SPINDLE SANDER
- KINDT COLLINS MASTER MODEL 24A, FLOOR STANDING 24" DISC SANDER
- STATE 24" PEDESTAL TYPE DISC SANDER
- 2) SINKER TYPE ELECTRICAL DISCHARGE MACHINES (INGERSOLL & CINCINNATI)
- 2) MILWAUKEE ELECTROMAGNETIC BASE DRILLS
- 2011 FORD SUPER DUTY F-750 STRAIGHT FRAME REG CAB XL 16' FLATBED TRUCK
- CATERPILLAR MODEL GC45KS, 9,100-POUND CAPACITY LP GAS FORK LIFT TRUCK,
- 2) 2-TON SINGLE GIRDER TRAVELING BRIDGE CRANES
- NORTH AMERICAN INDUSTRIES 2-TON SINGLE GIRDER OVERHEAD BRIDGE CRANE
- ABELL HOWE 1-TON FREE STANDING 360-DEGREE SWING JIB CRANE
- 2) NORTH AMERICAN INDUSTRIES 1-TON FREE STANDING 360-DEGREE SWING JIB CRANES
- 5) NAI NUT AND BOLT FLOOR MOUNTED 180-DEGREE JIB ARMS
- WALLACE MAGIC POLE PORTABLE GANTRY CRANE
- FORK LIFT TRUCK BOOM ATTACHMENT, 4000-POUND MAXIMUM LIFT CAPACITY
- AIR FLOW SYSTEMS CEILING MOUNTED FUME AND MIST COLLECTOR
- 2) AIRFLOW SYSTEMS INDUSTRIAL AIR CLEANERS WITH DUCT WORK AND COLLECTORS
- 2) AIRFLOW SYSTEMS DUST-PAK PORTABLE DUST COLLECTORS
- DELTA PORTABLE WOODWORKING DUST COLLECTOR
- SAYLOR BEALL 10/15-HP CAPACITY SINGLE STAGE HORIZONTAL TANK MOUNTED AIR COMPRESSOR
- MAKERBOT REPLICATOR Z18 3D PRINTER
- AND MUCH MORE!



MONTGOMERY'S

WILLIAMSANDLIPTON.COM

248-478-2000

Visit www.williamsandlipton.com
For More Information, Photos & To Bid!

PUBLIC ESTATE AUCTION

SATURDAY, MAY 2ND, 2026, 9:30 AM

LOCATION: 8331 112th Avenue
WEST OLIVE, MI 49460 zone 4



TRUCK/TRACTOR/EQUIPMENT: 2006 Toyota Tacoma 4wd, 4 dr., Auto, 130,000 miles, very clean truck (Reserve). Agro Util Tractor, single cylinder Wisconsin diesel, manual 3 pt., good rubber, made in South Haven, MI. New Idea 2 row wide row picker; Allis Chalmers Belt driven silage blower; Tow Behind Sprayer; Hay Elevator (electric) on wheels; New Holland Haybine (Parts); 100 Bushel gravity box on running gear; Utility Trailer; Horse-Drawn Wagon (complete, needs restoration).

TOOLS/OUTDOOR: Craftsman Battery tool set (like new), DeWALT 18v tool set, Ryobi cordless blower, cordless hedge trimmer, Elec. Power washer Roto Zip, Jig saw, Belt sander, Earthwise Battery Chain saw, Dual Saw, Routers, Roto Razor saw, Bull's-eye rechargeable tire inflator, Wagner Paint sprayer, Battery Chargers, Pipe Clamps, C-clamps, Wood Clamps, Roller Stands, Wrenches, Socket sets, Hammers, Files, snap ring pliers, Large Assortments of Drill Bits, Router Bits, Wood hole bits, Air Tools, Air Hose, Yard Works Lawn Sweeper, Tow behind fertilizer spreaders, Push Spreaders. Hand tools, Yard Tools, Step Ladders, Yeti folding Bag Chair, 2-wheel Dolly, Garage Chemicals, Shop Carts, Fishing Poles, Tackle Boxes, Whitetail/Mule Deer mounts, Antlers, Thompson Center 50 Cal. w/Scope, Thompson Center 45 Cal., Traditions 50 Cal.

ANTIQUES/PRIMITIVES: Ideal Washtubs, Wood Pulleys, Chicken Crates/feeders, Barn Windows, lanterns, Bird houses, Eveners, Galvanized buckets/cans, wood crates, Wagon Wheels, Radio Flyer wagons, Milk cans, Multiple size Crocks, Wood Planes, Large Assortment of Yard Décor, Metal Fans, Cast-Iron Wagner Pots and Pans, Bottles, Claw Foot tub, Mead Johnson Milk house blue prints, Metal Stars, Windmill Fan blades, 3 ft. Cast-iron cauldron pot, bird bath, plus much more! **Please see pictures on Website.**

COLLECTIBLES/FURNITURE: Lg. Assortment of Vintage made in USA Hall Pottery/Kitchenware. (Please see Website for Pictures)

Teapots, Lg. Assortment of Porcelain pots & pans, Copper pot, Canister Sets, Glassware, Farmhouse Furniture, Mission style dressers and Bedroom sets, Display Cases, Vintage Herman Miller Chairs, Porcelain top tables, Rugs, Seasonal decorations, Over 400 Precious Moments collection (most in boxes) Plus Much More!!! Please see pictures!

AUCTIONEER'S NOTE: This is an Auction you do not want to miss! Pickers Paradise! So many great treasures! Very large assortment of antiques/collectibles. Toyota Pickup is very clean Runs/drives great. Something for everyone. Bring a friend, we will have 2 auctioneers. **Please Note start time of 9:30 AM.** Inspection will be Friday, May 1st from 3:00 PM-6:00 PM. Cash or Good check day of sale only. All Items will be sold as is. Absentee Bidding is also available to approved bidders prior to auction. Announcements Day of sale take precedence over Printed Material.



Visit our Website: www.rosemaauctionservices.com for more info and pictures.

Any questions feel free to call Jared Rosema (231) 903-5455.

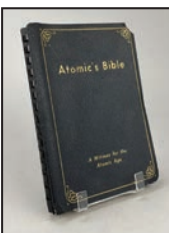
THE EPIC SPRING COLLECTOR'S AUCTION

Art, Antiques, and Estate Finds Auction
 ~ Virtual Simulcast Online Auction ~

Saturday, May 2 @ 10 AM Eastern

www.EpicAuctions.com zone web

Join us for our Spring Collector's Auction featuring a diverse and carefully curated selection of fine art, antiques, and estate property from multiple consignments. This catalog offers exceptional variety, including original artwork, antique furniture, decorative arts, and a strong selection of early 20th century postcards and paper collectibles. Collectors and decorators alike will find unique pieces spanning multiple styles and eras, along with gold and silver jewelry and other desirable estate items.



JOIN MICHIGAN'S FASTEST-GROWING ANTIQUE EVENTS - RECORD CROWDS AWAIT IN 2026!

Record-Breaking Attendance Across All Events in 2025



Davisburg: May 2-3 & October 10-11 • Midland: May 30-31 & September 26-27

BRAND NEW Indoor-Only Kalamazoo: November 14-15 (Kalamazoo County Expo Center) First-Ever West-Side Indoor Market – Reach New Buyers Including Chicagoland Area!



Capitalize on the Vintage Market Boom – Shoppers Craving Authentic, One-of-a-Kind Finds Over Mass-Produced Goods

MiAntiqueFestival.com Reserve Your Booth Today!

Ty Cobb

FROM PAGE 1

lived. A couple of advertising pieces offered reminders that before trading cards and television, baseball sold itself through other objects. A Spalding "official National League ball" reverse-painted glass sign dating to the early 1920s sold for \$2,750.

A rare 1888 sports trade card, an early form of lithographed advertising tied to Detroit's first successful major leagues baseball team, sold for \$1,200. With the face of manager Bill Watkins on the front, the card advertising the Detroit Wolverines was handed to customers of an Ann Arbor, Mich., shoe and



Above: A light-toned Mickey Mantle signed baseball sold for \$375.

boot store hoping to employ the growing popularity of baseball to draw attention to the store.

"I've been collecting sports since I was a kid," auctioneer Jared Mark said, "and I've never seen a Detroit card like this."

Sadly, the trade card probably didn't do as much as was expected in its day. Even though they had won the league championship the year before, the Wolverines folded after the 1888 season supposedly due to high player salaries.

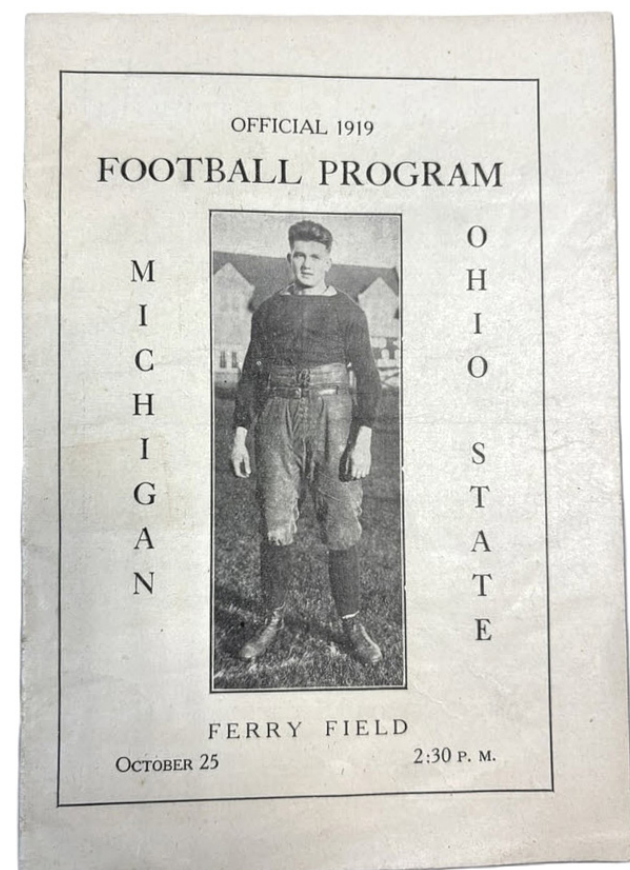
With a game time temperature of 60 and steady rain Michigan faced Ohio State for their annual football matchup on Oct. 25, 1919. As temperatures plunged during the game, Ohio State found better footing on a soaked Ann Arbor Ferry Field and pulled off a 13-3 victory. A nearly perfect condition program from that game sold for \$1,300.

A sealed 1954 Red Man tobacco premium package featuring Hall of Fame pitcher Warren Spahn brought \$1,000, its value tied as much to the card's apparent condition as to Spahn.

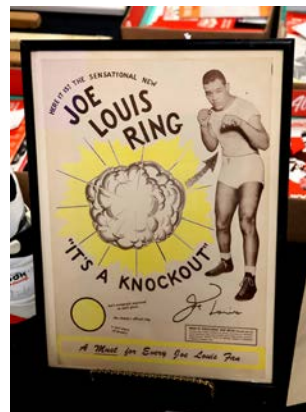
Even more unusual was the auctioning for



Above: A nearly complete 1958 Topps set sold for \$4,500. Among the cards was one for Joe Nuxhall, who first played briefly for Cincinnati in 1944 at the age of 15. He is still considered the youngest major league player ever.



Above: A rare 1919 Michigan-Ohio State football program sold for \$1,300. The pictured player, Michigan quarterback Ernie Vick, was a two-sport athlete who also starred in basketball.



Above: A circa 1940 cardboard sign advertising a souvenir Joe Louis boxing glove metal ring sold for \$140.

\$500 of an unopened pack of Piedmont cigarettes, likely dating to the early decades of the 20th century. Such packages have been associated with the era of tobacco-insert cards, especially the famous T206 issue. As auctioneer Marks observed, the lingering question of what might be inside added more than a touch of intrigue that bidders found hard to resist.

On the other end of the bidding, a gold-tint framed 1937 airbrushed portrait of an obscure Illinois high school football player was ham-



Above: A very rare certified 1991-92 season NHL 75th Anniversary All-Star CCM game-used jersey #18 worn by Red Wings center Steve Yzerman sold for \$2,350. Yzerman normally wore #19, but LA Kings Larry Robinson got that number that day.

mered down for \$180. Sold in its day to the player's family by a traveling Chicago salesman.

A pair of signed former Detroit Tiger's pitcher Jack Morris and first baseman Darrel Evans baseballs were hammered at \$30, or \$15

apiece. And an autographed Denny McLain "Year of the Pitcher" Time Magazine cover dated around his first 1968 win sold for an opening bid of \$25.

For more information visit <https://hollerandhammerauctions.com>



Above: A box of more than 2,500 vintage late 1960s and 70s-era baseball cards sold for \$475. Those visible included Dennis Eckersley, Tony Oliva, Greg Nettles, Mike Marshall, and Mickey Stanley.



Above: Ring spotter Taylor Mark and daughters auctioned a Detroit Red Wings Chris Osgood game-used Hespeler goalie stick that sold for \$350. Auctioneer Jared Mark is behind taking pictures.

HOP HEAD FARMS

LIVE & ONLINE AUCTION

WEDNESDAY, APRIL 29, AT 10:00 AM

2993 E LEMON CREEK RD, BARODA, MI

zone web

TRACTORS

- JOHN DEERE 5100E LOADER TRACTOR WITH H240 LOADER
- LANDINI REX 120F TRACTOR
- LANDINI REX 110F TRACTOR
- LANDINI REX 100 GT TRACTOR
- CASE INTERNATIONAL 95 TRACTOR
- MCCORMICK F100XL TRACTOR
- MCCORMICK F100 TRACTOR
- FORD 5000 TRACTOR

SKID STEERS & ATTACHMENTS

- BOBCAT T190 SKID STEER
- BOBCAT 66" WIDE GRAPPLE TOOTH BUCKET
- GROUND ANCHOR DRIVER
- 78" SKID STEER BUCKET WITH BOLT ON CUTTING EDGE
- 66" WIDE SKID STEER BUCKET WITH BOLT ON CUTTING EDGE
- 60" WIDE SKID STEER BUCKET.
- SET OF SKID STEER PALLET FORKS.
- SET OF TOMAHAWK SKID STEER PALLET FORKS
- EASY SPOT UP WOOD POLE LIFTER
- BLUE DIAMOND SKID STEER POST HOLE DIGGER

UTV'S

- BOBCAT 5600 TOOL CAT UTILITY WORK MACHINE
- POLARIS RANGER 700 TWIN EFI
- POLARIS RANGER XP SIDE-BY-SIDE, FOR PARTS ONLY.

SKYTRAK

- 2004 INGERSOLL-RAND VR-642C SKYTRAK

TRUCKS, TRAILERS & VEHICLES

- 2013 ISUZU CUSTOM HARVESTING HOP TRUCK
- 2013 ISUZU CUSTOM HARVESTING HOP TRUCK
- 2011 ISUZU TRUCK WITH HOP'S HARVESTING BED
- 2011 ISUZU CUSTOM HARVESTING HOP TRUCK
- 2012 FORD F350 CREW CAB TRUCK
- 2004 FORD F150 XLT, EXTENDED CAB PICKUP TRUCK
- 2004 CHEVROLET 2500 HD CREW CAB TRUCK
- 2002 FORD F250 XL SUPER DUTY, EXTENDED CAB PICKUP TRUCK
- 1969 CHEVROLET STAKE TRUCK
- 2014 ELITE TRAILERS GOOSENECK TRAILER
- 14' LONG X 8' WIDE TRUCK BED WITH STAKE POCKETS AND REMOVABLE SIDES, AND STEEL FLOOR

HOP EQUIPMENT

- 2013 WOLF HOP DRYING HEATER, TYPE H-10
- HOP'S PROCESSING PRODUCTION LINE
- FREE-STANDING HOPPER WITH INSIDE BEATERS AND LOWER CONVEYOR BELT
- INDUSTRIAL, VARIABLE SPEED BLOWER
- HERMAN'S MOBILE SERVICE THINNING TOWER
- SOLLER HOP'S HARVESTING WAGON
- HOP'S SICKLE BAR CUTTING TOOL WITH FORK POCKETS
- HERMAN'S MOBILE SERVICE HOPS TOP CUTTER MACHINE
- HOPPER, 23" X APPROX. 35" X 24" DEEP, WITH APPROX. 7' 4" EXIT AUGER, INCLUDES BEATERS
- DURA-PACK SINGLE LANE FILLING SYSTEM WITH A SYNTRON MAGNETIC FEEDER

WALK IN COOLER

- AMERICAN COOLER TECHNOLOGIES WALK-IN COOLER

FORKLIFTS

- YALE ELECTRIC LIFT TRUCK, MODEL ER-P030VTN36TE088
- KOMATSU LP FORK TRUCK, MODEL FG25C-12
- CLARK FORK TRUCK, MODEL GCS15
- CLARK FORK TRUCK, MODEL UNKNOWN
- STAR INDUSTRIAL SAFETY WORK PLATFORM, MODEL 1210C/G
- STAR INDUSTRIAL SAFETY WORK PLATFORM, MODEL 1208C/G

TILLAGE

- 2013 MASCHIO ROTOTILLER
- JOHN DEERE 18" WIDE DISC WITH REAR HITCH
- CULTIVATOR WITH HYDRAULIC EXTENDABLE SIDES, 8' WIDE, REAR DISCS
- 3-POINT MOUNT CULTIVATOR, 8' WIDE WITH

HYDRAULIC EXTENDABLE WINGS, ROLLING BASKET LAND LEVELER, REAR DISCS

- UNVERFERTH PERFECTA II CULTIVATOR
- TUFLINE 2-SHANK RIPPER
- 3-POINT MOUNT, 4-SHANK DISC RIPPER WITH ROLLING BASKET LAND LEVELER
- 72" WIDE ROTOTILLER
- 72" WIDE, 3 POINT HITCH DISC
- 2-SHANK RIPPER
- 4-SHANK DISC ATTACHMENT WITH ROLLING BASKET
- 3 POINT HITCH 4-TOOTH ATTACHMENT

SPRAYERS

- AGTEK 1000 CS ORCHARD SPRAYER, 1000 GALLON SS TANK
- AGTEK 500 CS ORCHARD SPRAYER, 500 GALLON STAINLESS STEEL TANK
- CARRAROSPRAY 600 GALLON SPRAYER
- APPROX. 1000 GALLON NURSE TANK ON TANDEM AXLE RUNNING GEAR
- MYERS ORCHARD SPRAYER.
- UNKNOWN BRAND ORCHARD SPRAYER
- T-BRO-FAB 300 GALLON, SINGLE AXLE SPRAYER

SUPPORT EQUIPMENT

- MI-T-M 3500 PSI STEAM CLEANER WITH HONDA GX390 GAS ENGINE
- MILLER MILLERMATIC 250 WIRE WELDER
- FIRMAN DUAL FUEL GENERATOR, MODEL H07552
- HERMAN'S MOBILE SERVICE 300 GALLON PULL TANK
- HOBART STICK MATE LX235AC STICK WELDER
- ORBIT MACHINE TOOLS DRILL PRESS
- (2) DELTA CONSOLIDATED INDUSTRIES 50 GALLON FUEL TANK
- DELTA CONSOLIDATED INDUSTRIES FUEL TANK
- APPROX. 500 GALLON DIESEL TANK
- APPROX. 500 GALLON GASOLINE FUEL TANK
- 1550 GALLON POLY TANK
- PARTIALLY CONSTRUCTED FORKABLE PLATFORM
- CHEM PRO CHEMICAL DISPENSERS
- MISC. SHOP TOOLS & TOOL BOXES
- LARGE LOT OF TEARDROP STYLE PALLET RACKING
- 20' LONG X 16" WIDE CONVEYOR
- SOLLER CARDBOARD BALER
- SOLLER 6MBH CARDBOARD BALER
- CAS CORPORATION DIGITAL SCALE
- (2) 100 LB. GAS CYLINDER WITH EXTENDAPAK FOOD GRADE COMPRESSED NITROGEN
- ROUGHNECK MANUAL PALLET JACKS
- 1550 GALLON POLY TANK
- (3) SKIDS OF ASSORTED BARBED WIRE FENCE.
- LARGE LOT OF 60" GROUND ANCHORS.

ATTACHMENTS

- 2022 MASCHIO GASPARDO GIRAFFA S 120 MULCHER
- WOODS 1050 BACKHOE ATTACHMENT, 3 POINT MOUNT WITH DOWNRIGGERS
- 2013 PERFECT VAN WAMEL ORCHARD ROTARY MOWER
- BUSH HOG TWIN ROTARY MOWER
- GILLISON'S VARIETY FABRICATION HYDRAULIC BIN DUMPER
- FRONTIER 10-TOOTH GRAPPLE BUCKET
- PETER'S PULL TYPE BOX BLADE, 8' WIDE, WITH HYDRAULIC LIFT
- 8' WIDE ROTARY BRUSH HOG, 3 PT., 540 PTO SHAFT, SOLID REAR TIRES.
- JOHN DEERE 8' BACK BLADE, 3 PT.
- FRONTIER LOADER TRACTOR PALLET FORKS
- 3 POINT MOUNT, SINGLE TOOTH RIPPER

LAWN & GARDEN

- BIG DOG ZERO TURN MOWER WITH 60" DECK
- CRAFTSMAN ZTL8000, ZERO TURN MOWER
- STIHL KM130R STRAIGHT SHAFT STRING TRIMMER
- STIHL MS271 CHAINSAW WITH 22" BAR
- STIHL FS111R STRAIGHT SHAFT STRING TRIMMER
- STIHL MS180 CHAINSAW WITH 16" BAR
- STIHL FS55 STRAIGHT SHAFT STRING TRIMMER
- ECHO HC-2020 GAS POWERED HEDGE TRIMMERS

Plus Much More



MEDEMA AUCTIONEERING, INC.
LIVE & ONLINE AUCTIONS

VIEW ALL ITEMS IN DETAIL AND/OR BID AT
MEDEMAAUCTIONEERING.COM OR CALL
CHUCK RANNEY AT 616-560-0839.

DOLLY PIKE

LIVE ON-SITE PUBLIC FARM AUCTION

THURSDAY, APRIL 30TH @ 10:00 AM

INSPECTION: Weds, April 29, 3PM-5PM

LOCATION: 15196 FRUIT RIDGE AVE.

DIRECTIONS: 1 1/2 miles North of Kent City on Fruit Ridge Ave. OR take I-96 West of Grand Rapids 4 miles to the Fruit Ridge Exit #26, North 15 miles. OR take US-131 South of Big Rapids 35 miles to the Cedar Springs Exit # 104, West 10 miles to Fruit Ridge Ave., North 1 1/2 miles.

KENT CITY, MI 49330 (Kent Co.) zone 4

Dolly Pike, due to the death of her husband, Ron Pike, will sell his farm equipment & tools. Ron was a Vietnam War veteran & Purple Heart recipient. He worked Auctions with us for over 40 years.

TRUCK & CAMPER: 2016 Dodge Ram 2500 Laramie Heavy Duty 4X4, automatic, 6.1L Cummins Turbo Diesel, Crew Cab 4-door, sun roof, 6'6" box, Tahoe cover, gooseneck hitch (83k miles, 1-owner & always kept in the garage); 2004 Cedar Creek 36RLTS Custom Lite Aluminum Structure 5th wheel camper, 3 slide-outs, fireplace, AC, washer/dryer (very nice condition, 1-owner, always stored indoors) **TRACTORS:** 1968 JD2020 gas w/loader; JD 2020U gas; 1949 Farmall H; 1949 Farmall H; Farmall Cub **SKID STEER & HI-LO:** Case 430 Series III diesel skid steer w/bucket & forks; Allis Chalmers FTL20-24 LP gas warehouse hi-lo **FARM EQUIPMENT:** NI 310 1rw corn picker; JD 494A 4rw corn planter; AC PTO manure spreader; NH 717 1rw Super chopper; NH Super 23 PTO silo filler; JD 14-T baler; (5) Hay wagons; 8-shank chisel plow; 3pt 5' brush hog; 3pt 8' back blade; Skid steer bale spear; 7' bolt on PTO hay mower; IHC 4' single fast hitch drag; Gravity box; Hammer mill w/elect motor; Mayrath 32' transport double chain conveyor w/elect. motor; Shop built hyd. log splitter w/11hp gas engine; Shop built 4'7" X 8'7" stock trailer; Gehl forage boxes; 12+ scrap iron farm implements **YARD EQUIPMENT:** JD X320 lawn tractor w/bagger; Cyclone Jet Path clamp on gas yard vac; Husqvarna 359 chainsaw; Husqvarna Dual Rotation rear-tine rototiller; Husqvarna ST624E 2-stage self-propelled snow blower; Cub Cadet walk behind line trimmer & much more **SNOWMOBILES & TRAILERS:** Merc snowmobile; Challenger snowmobile; Snowmobile trailer; 7'9"x24' tandem axle cargo trailer; Single axle utility trailer **TOOLS:** Workshop full of power & hand tools; Welders; Acetylene torch set; Generators; Air compressors & much more! **PLUS:** Farm primitives & lots items from around the farm.



Visit www.artsmithauctioneers.com or Call Noah Smith for flyer 616-633-4254

Absentee Bidding Available

JOY HEITGER ESTATE

PUBLIC AUCTION

SUNDAY, APRIL 26, 11:00 AM

LOCATION: 31520 US 12

DIRECTIONS: Located 4 miles east of Sturgis Michigan on US 12 at the corner of County Farm Road and US 12, Sturgis, Michigan.

STURGIS, MI (big brick building) zone 5

Selling contents of the pole barn and one large room of the residence with two auction rings for the entire auction.

FROM HOUSE: 7' high x 5' wide double door with punch tin panels, pie cabinet, walnut Victorian mirrored top cabinet, Dry sinks, 5' wide roll top desk, 5' wide x 7' high wardrobe, 89"x94" 2 pc. 3 door primitive cupboard, 56" wide wardrobe, "Koken" 8' tall cast and zinc barber pole, unassembled slate top billiards table (needs restored), 9' bench, old horse-drawn lumber/log sleigh, 2 pcs 18" wide x 78" long x 1 1/2 inch thick marble, Glenwood cast-iron cookstove, Round Oak heating stove, Keystone laundry stove, Oak Laurel stove, old Magic Chef 57" wide gas stove, cast-iron fireplace front, GE top compressor, refrigerator, J. Baum safe (no combo), Atlas 24" table metal lathe on stand, 8 - 6"x6" square wood beams up to 16' long, several sheets ship lap siding, new oak molding and trim, asst. pcs. lumber (stored inside), wicker plant table, large cast-iron kettles.

FROM THE BARN: 3 large trailer loads of tools, hardware, garage, barn and shop collectibles and goodies, 3 Volkswagen engines 6 cylinder, few Mustang parts, new drywall lift, 2 old cutter sleighs w/single trees, 14' wood boat, workbench w/ vise, corn sheller, wooden wagon seat bench, Troy-Bilt 26" snowblower, 5 hp tiller, step ladders, 4' metal lawn roller, aluminum floor jack, floor model shop fan, 10" Ryobi miter saw, Ridgid power tile saw w/cart, 2 table saws, stock stands, acetylene and oxygen tanks, belt and disc sander, Milwaukee 8" double arbor grinder, Sandborn 5 hp 2 stage upright air compressor, 2 stick welders, portable compressor, railroad and barn jacks, 10' aluminum siding bender, new in box Kenmore 55 gallon electric water heater, cast-iron stoves, many lawn and garden hand tools, lard press, 5' cast-iron bench (needs repair), several new replacement windows, many doors - solid wood, metal, panel doors, screen doors, some w/frames, interior and exterior, 3 cast-iron claw foot bathtubs, pedestal sinks, lots of new and used plumbing fixtures and hardware, old cabinets, old pitcher well pumps, sleds, wooden chests, tool boxes full of tools, metal shelving and racking, chairs, tables, old furnishings, buffets, hutches, new bath, shower, sink and kitchen faucets, new LED lights, many Victorian Corbel and porch pcs, scrap iron and metal piles and much more from one of the areas most colorful, original, quirky and eccentric collectors "Joy Heitger". Many more auctions to follow . . .

Pictures available on auctionzip.com
use auctioneer ID 5853 and White Barn Auction facebook page.
NO PARKING ON US 12 - SOME OFF ROAD PARKING AVAILABLE
TERMS: Cash - check - credit cards w/3%

JOY HEITGER ESTATE/TRUST
STURGIS BANK AND TRUST - TRUSTEE

RANDY LUDWICK AUCTIONS
664 W. CHICAGO RD, BRONSON MI
(517) 617-8034

Randy Ludwick Auctions, LLC
Bronson, MI 49028 | 517-617-8034 | Scott Wilber, Assisting Auctioneer

PUBLIC AUCTION

SATURDAY, MAY 2, 2026 @ 10:00 AM

LOCATION: 6217 LAKE DR.
MECOSTA, MI 49332 zone 2

2022 Can-Am Ryker Motorcycle • 2002 Triumph Bonneville • 2016 Honda VT1300LX Motorcycle • 1999 Club Car Golf Cart • 2010 Interwest 5x8 Enclosed Trailer • 6x8 Utility Trailer • 1994 Dodge Pickup w/Snow Plow • Go Trax Scooter • Motorcycle Accessories & Related Reese Hitch Motorcycle Carrier • Motorcycle Seats • Motorcycle Saddle Bags • Motorcycle Helmet • Motorcycle Tail Pipes • Set of (4) Can-Am Rims • **Riding Lawn Mower & Outdoor Items** Ariens 22HP V-Twin 46" Riding Mower • Assorted Lumber • Assorted Reese Hitches • Pintle Hitch • Folding Aluminum Ramps • Strike Master Ice Auger • Chainsaws • Kayak • Quantity of 5-Lug Trailer Tires w/Rims • Tractor Chains • Lawn Thatcher • Picnic Table • Fishing Poles • Lawn Edger • Draw Bar • John Deere Weed Whip • 100# Propane Cylinder • Ammunition Including 308, 22 Mag, 357, & 12 Gauge • Gas Leaf Blower • Smoker • **Tools** Tool Box • Sledge Hammers • Sump Pump • Drill Bit Set • Sockets • Open End Wrenches • Craftsman Buffer • Dewalt Miter Saw • Framing Square • Craftsman Radial Arm Saw • Black & Decker Bench Top Drill Press • Electric Drills • Cement Nailer • Power Paint Roller • Jig Saw • Organizers • T-Handle Allen Wrenches • Mini Wood Lathe • Air Nailers • Hydraulic Jack • Ryobi Router • Craftsman Router • Craftsman Table Saw • Craftsman Rotary Tool Bench • Ridgid Battery Drill Kit • Air Compressor • Jump Starts • Roller Stands • Shop Vac • Buddy Heater • New Truck Mirrors • Pipe Wrenches • Roll Around Tool Cart • Craftsman Sander • Router Bit Set • Air Wrenches • Tile Saw • **Furniture, Household, & Miscellaneous** 3-Door Oak Hutch • (2) Dining Room Tables w/(4) Chairs Each • New Magic Chef Apartment Size Fridge • Gold Plate Silverware • Electric Ice Maker • Ceramic Figurines • Records • Belt Buckles • GE Washer • Frigidaire Dryer • 1972 US Army Lantern • Amber Glass • Copper Pot • Oak Hall Tree • Turkey Fryer (New) • Whirlpool Washer & Dryer (Electric) • Samsung Washer • Treadmill • Salt & Pepper Shakers • Glassware • Kitchenware • Pool Sticks • Dart Board • **This Is Only A Partial Listing!**

Go to www.yoderauction.com for a more detailed listing, pictures, and updates.

BETTY WRIGHT, OWNER

Yoder Auction LLC
 Aden Yoder, Auctioneer
 (989) 429-7049 • www.yoderauction.com



The Anthony Hehl ONLINE ONLY AUCTION

TRACTORS - EQUIPMENT - ANTIQUES - WOODWORKING SHOP
Bidding ENDS: SUNDAY April 26, 2026 @ 7pm est
 Items located at: 12827 Minx Rd. LaSalle, MI 48145



AUCTIONEER'S NOTE: Longtime Monroe County tractor collector Anthony Hehl has decided it is time to downsize his collection and has commissioned Brad Neuhart Auctioneers to sell a significant portion of his well-cared-for tractors, along with related machinery, tools, and items no longer needed, via an online-only public auction. Known for his keen eye and appreciation for originality, Anthony built an impressive collection of rare tractors, making this a great opportunity for collectors and enthusiasts. Bidding will open in mid-April, with items beginning to close on Sunday, April 26, 2026, at 7:00 PM. An in-person preview will be held on Wednesday, April 22, 2026, from 9:00 AM to 2:00 PM at the Hehl Farm in LaSalle, Michigan. Payment and pickup will take place on Tuesday, April 28, 2026, from 9:00 AM to 3:00 PM at 12827 Minx Rd., LaSalle, MI 48145.



TRACTORS: John Deere 60; Farmall Super W4; Allis Chalmers G w/ RARE 4R Planet Jr. Planter - ONE OF THE NICEST ORIGINALS YOU'LL EVER FIND!!!; IH Cub Lo-Boy w/ Mower; Allis Chalmers G w/ Disk Plow; Allis Chalmers G w/ Belly Mower; RARE Grand Haven CC Tractor; RARE Grand Haven BC Tractor; Gibson Tractor;



EQUIPMENT/PARTS: AC G 1b Plow; Landpride 8' Hyd. Angling Blade; Liberty 3pt. Backhoe; IH 2b Plow; JD 2b Plow; JD 14' Field Cult.; 10' Crowfoot Packer; NICE MH 8' Disk; 3 Sect. Drag; (2) Buzz Saws; Steel Wheel Wagon; AC B Rear Steel; AC WC Rear Steel; Misc. Steel Wheels; RARE Ford 2n-8n Weather Brake; Farm Truck Bumper; Oliver Sickle Bar Mower; 36' McCurdy Elevator; AC G Parts; RARE John Blue AC G Side Dresser; Howse 7' Blade; Cement Mixer; McD Corn Sheller; 3pt. Post Hole Digger; 3" & 4" Augers; MORE



WOODWORKING SHOP: GROUPS OF WALNUT & OAK ROUGH SAWN BOARDS; Powermatic PJ-882H 8" Jointer; Powermatic 15HH 15" Planer; Belsaw 12" Planer; JDS 750ER Filtration Unit; Grizzly G1012 18" Band Saw; Jet 42" Wood Lathe; Delta 36" Drum Sander; Delta 10" Table Saw; JDS Cyclone Dust Collection System; Grizzly G-1183 Belt/Disc Sander; Routers; Clamps; Jigs; Shop Fox Mortiser; Router Bits; Lathe Chisels; MUCH MORE;



OTHER ITEMS OF INTEREST: Chief 12' 4 Ring Grain Bin; Sioux 12' Wire Corn Crib; 12' Wire Corn Crib; Grain Bin Roof Panels; Tile Culverts; HD Western Wood Stove; (2) Platform Scales; Wall Phone; Simplex RR Jacks; Turnbuckles; NEW 24" Grinding Stone; Vintage Traps; Load Bars; MORE



BRAD NEUHART AUCTIONEERS
 REAL ESTATE BROKERS
 (734) 439 - 7939
www.bradneuhart.com

See Pics, Info & BID at: www.bradneuhart.com

TERMS: Cash, wire transfer or acceptable check. ANY out of state check or check over \$3,000 MUST be certified or have a bank letter of guarantee (see website for example). 10% Buyer's Premium. See website for full terms.

STUTZMAN FARMAUCTION

LOCATION: 2 miles West of Gladwin, MI on M-61 to Grout Rd., South 4 1/2 miles to Knoll Rd., West 1/2 mile to Sale Site: 4675 Knoll Rd., Gladwin, MI 48624. Follow Yoder Bros. Auction Signs!

SATURDAY, MAY 2nd, 2026 @ 10:00 a.m. • GLADWIN, MI

HORSES, HARNESSSES and CARRIAGES
DOC & DUKE 7 yr old Sorrel Belgian Geldings. Well broke to Farm Machinery.
RANDY & BONNIE 12 & 13 yr old Sorrel Belgians. Well broke to Farm Machinery.
ROCKY 5 yr old Bay Belgian SB Morgan Cross Gelding. Broke to Farm Machinery.
RUDY 16 yr old Percheron Morgan Cross Gelding. Broke to all Farm Machinery.
BUCK 18 yr old Black Percheron, Morgan Cross Gelding. Broke to all Farm Machinery.
TEX 17 yr old Standardbred Mare. T.S.S. Family Horse.
TINY 17 yr old Standardbred Mare. T.S.S. Family Horse.
CARRIE 10 yr old SB Morgan Cross. T.S.S.
WALKER 18 yr old Percheron Morgan Cross Gelding. Broke for field work.
 • Open Buck Board Buggy • Single Top Buggy • 2 - Surrey Buggies • Open Buggy • 3 Sets Bada Draft Harnesses • 3 Sets Buggy Harnesses • Set All Purpose Harnesses • 2 - 3 & 4 Horse Eveners • Assorted Horse Collars

HORSE DRAWN FARM MACHINERY
 • McDEERING 8' Grain Binder • McDEERING Corn Binder • NEW IDEA No. 8 Manure Spreader • PEQUEA 4 Wheel Manure Spreader • NEW HOLLAND 4256 Hay Rake • McDEERING Green Crop Hay Loader • 2 - Hay Wagons w/Uprights & Grain

Sides on Hochstetler Gears • McDEERING No. 7 6' Hay Mower • White Horse R-14 Single Bottom Plow • PIONEER 14" 2 Bottom Plow JD Bottoms • PIONEER Fore Cart • MILLER 2 Row Cultivator • McDEERING 11 Hole Grain Drill • CYCLONE Fertilizer Spreader on mower gear • Corn Fodder Shredder • 12' Cultimulcher • JD Spring Tooth Drag • JD 8' Spring Tooth Drag • 8' Cultipacker • 6' Tandem Disc • 5' Horse Drawn Snow Scoop • 20' Field Sprayer • PAPEC L Silo Filler, needs repair • PAPEC L Shredder Heads • PAPEC Web Chain • JD VanBrunt Grain Drill for parts • 40"x7" Endless Belt, good cond. • 30"x7" Belt • 20"x6" Belt

MOTORS
 • DETROIT DIESEL 353 90 HP Motor w/running gear, good condition • HONDA 13 HP Motor • HONDA 11 HP Motor

FARM MISC. ITEMS
 • Buzz Rig w/34" Carbide Blade & 13 HP HONDA • BEAR CAT 15" Feed Grinder w/Roller Mill • YODER Shoeing Shocks • 3 - 8' Polly Feed Bunks • Round Bale Feeder • 10 - 16" Cattle Panels • Platform Scale • Twin Tank Air Compressor • Jet Table Saw • 21 - S.S. Milk Grade Milk Cans • S.S. Milk Pails • McDEERING Cream Separator, complete in working condition, Also one for parts • ASHLAND Can Cooler • 2 Milk Strainers • 40' Fiberglass Ext. Ladder • 16' Alum Ladder • STANLEY Pressure Washer • 4 - 100 Gallon Water Troughs • Feed Sack Cart • STANLEY Pressure Washer • BARTH

52" 16 ga. Manual Metal Shear • Steel Wheel Wheel Barrow • Steel Wheel Barrow Wheels • 20 Ton Hyd. Jack • Hand Crank Seeder • 100 Gallon Stock Tank • 1/2 Ton Chain Chain Hoist • Deep Well Water Pump • Tile Culverts • **SEVERAL MISC GOODIE WAGONS! MANY MORE ITEMS TO NUMEROUS TO MENTION!**

FEED
 • Approx. 300 Bu. Speltz Oats mixed • Approx. 224 Bu. Ear Corn • Approx. 175 Bales 2nd Cut Hay

CHICKENS
 • 12 Cinnamon Queen Laying Hen Pullets, started laying

SPORTING ITEMS
 • C.V.A. Arms Muzzle Loader 45 cal w/scope • 2 - Cross Bows • 3 - Compound Bows

HOUSEHOLD RELATED ITEMS
 • 30 Gallon S.S. Kettle, good condition • 40 Gallon Cast Iron Kettle w/Jacket, good condition • NEW PERFECTION 3 burner Kerosene Stove • Kerosene Stove • Assorted Cabinets and Dressers • Night Stands • WHITE Sewing Machine • PARAGON Sewing Machine w/Stand • Bread Box • Assortment of Colored Glassware • Apple Drier • Small Beds • Swivel Chair • Assorted Colored Glassware • NANCY DREW Book Set • Assorted Other Books • Kerosene Lanterns • 5 Gallon Pails • **MANY MORE ITEMS TO NUMEROUS TO MENTION.**

AUCTIONEERS NOTE: Mark your calendar and enjoy a good clean Country Auction with us! Hope to see you there!... LeRoy

AUCTION TERMS: Cash or approved check with proper I.D. Nothing to be removed until settled for. Not responsible for accidents. All announcements made day of sale take precedence over all printed materials. Out of state buyers must have bank letter of credit. Absentee and phone bids welcome to Pre-Qualified customers.

OWNERS: ANANIAS and DELILA STUTZMAN

LUNCH ON THE GROUNDS

Yoder Brothers Auction Service
 Specializing in Successful Auctions
 Auctioneers LeRoy and Willis Yoder
 9484 S. Rodgers Ave., Clare, MI • PH: 989-386-9082

GLICK/BEECHY FARMAUCTION

LOCATION: 3 1/2 miles North of Gladwin, to Wagerville Rd., West 1 Mile to Oberlin Rd., North 1/4 Mile to Sale Site: 2138 Oberlin Rd., Gladwin, MI 48624. Follow Yoder Bros. Auction Signs!

FRIDAY, APRIL 24TH, 2026 @ 9:30 a.m. • GLADWIN, MI

HORSES and HARNESSSES
BELL & HOLLY 7 & 5 yr old Belgian Mares. Red Sorrel, Handy Farm Team that is well Broke to Farm Machinery.
RICK 12 yr old Belgian Gelding. Well Broke to Farm Machinery. Very Safe & Quiet.
BONNIE 2 yr old Belgian Mare, Blonde. Started in Harness.
BARNEY 2 yr old Belgian Gelding Sorrel, Started in Harness.
TENA 2 yr Belgian Mare. Started in Harness.
BELGIAN Yearling Filly.
BELGIAN Yearling Stud.
KAHLA 12 yr old School Boy, T.S.S. • 2 Seat Surrey w/All New Vinyl & Brakes, Torsion Axle • 2 Seat Surrey w/Torsion Axle • 2 - Single Top Buggies • Open Buggy w/Torsion Axle, Like New Cond. • Open Buggy w/Torsion Axle • Open Buggy • PIONEER 1 Horse Spring Wagon w/Brakes & Draft Shafts • 1 Horse Spring Buggy • 1/2 Ton 2 Seat Pony Wagon w/ Springs • EZ TRAIL Pony Cart • 3 - Sets Bio Draft Harnesses • 1 Set Leather Harness • Set of Nylon Draft Harness • Single Driving Harness

HORSE DRAWN FARM MACHINERY
 • FAVORITE 24" Feed Thrash Machine w/Straw Cutter • JOHN DEERE 336 Sq. Baler • 2 - McDEERING Hay Loaders • J.D. Hay Loader • MASSEY HARRIS Hay Loader • 3 - McDEERING Corn Binders, good cond. Also One for parts • McDEERING No. 9 Hay Mower w/High Gear, Dolley Wheel • 3 - McDEERING No. 9 Hay Mowers w/Dolley Wheels, rebuilt cond. • J.D. Big 4 Hay Mower w/Dolley Wheel, rebuilt cond. • McDEERING 8' Grain Binder • McDEERING 6' Grain Binder • Hay Wagon w/Grain Sides & Uprights • 2 - Hay Wagons • 2 - Loose Hay Wagon Racks • 35' NEW IDEA Hay Elevator • 40' Hay Elevator • NEW IDEA Hay Rake • N.H. 352 Grinder

Mixer w/Manual Auger
 • GEHL C-40 Silo Filler (Mint Cond.) • McDEERING No. 9 Silo Filler • 2 - OLIVER 13 Hole Grain Drills • 3 - J.D. 999 2 Row Corn Planters • PIONEER Fore Cart w/7" Back Blade w/Wings • PIONEER 1 Bottom 14" Plow • OLIVER 2 Bottom 14" Plow • J.D. Walking Plow • Grain Wagon w/V Box, MC Gear • Grain Gravity Wagon • 2 - Gravity Boxes • Road Grader w/Angle Blade • 32' Field Sprayer • 12' SHIPSHIE Cultimulcher • 8' DUNHAM Cultimulcher • 5' Cultimulcher • J.D. 3 Sect. Spike Tooth Drag • 10' Spike Tooth Drag • 9' Spring Tooth Drag • J.D. Rotary Hoe • MILLER 2 Row Cultivator • J.D. 1 Row Cultivator • 2 - McDEERING 1 Row Cultivators • Potato Digger • Beet Puller • Thrash Machine Wiegher • M.M. Corn Sheller on Gear w/Drags • Green Crop Hay Loader for Parts • Bob Sled • MC No. 7 Hay Mower For Parts • J.D. Binder Tongue Truck • Hay Loader Wheels

POWER UNIT
 • V.M. 115 Hp. 4 Cyl. Diesel w/Clutch and Gear, Pony Start, Good Cond.

FAMILY COW and BULL
 • Jersey Family Cow, 2nd Lact., Fresh in Jan. • Jersey Bull 1 yr. old • 2 Milk Strainers • 10 - S.S. Milk Grade Milk Cans

MISC. ITEMS AROUND THE FARM
 • LIKE NEW Favorite Dump Wagon w/Steel Wheels • CLIPPER 54" 3 Gang 1 Horse Reel Mower, like new • 1 Horse Reel Lawn Mower • 5 Reel Push Mowers • 12' Alum Boat w/Trailer • 2 - Ice Fishing Shanties • 1/2 Bag Cement Mixer w/Honda • Cement Mixer • David Bradley 14" Hammer Mill w/Cyclone • Ford 12" Hammer Mill w/Cyclone • J.D. 10" Feed Grinder • 5x8 Utility Trailer • 2 - Calf Hutches • Feed Crimper • Assorted Set's of 4 - 5&6 Bolt Steel Wheels • Buzz Rig • Dust Collector • CLIPPER Fanning Mill • Grain Blower • Set of Hay Stings • Hay Hook • Hay Car • 6" Blower Pipes • NEW 8' - 10' - 12' - 16' Alum. Diamond Bar Gates • Portable Chicken Coop • 9x6 Playhouse

Seymour Dehorne • Set of Wagon Springs • Set of Cable Buggy Brakes • F-W & Myers Well Pumps • Shetler No. 61 Well Pump • S.S. Chimney • Assorted Steel Wheels • Buggy Lanterns • **SEVERAL MISC. GOODIE WAGONS!**

SPORTING ITEMS
 • Ten Point Cross Bow • STRYKER Cross Bow SHOP and CARPENTER ITEMS
 • DeWALT Chop Saw w/4 Stroke Honda • RIDGID Chop Saw w/4 Stroke Honda • DeWALT Chop Saw w/Slith Motor on Stand • JET 10" Table Saw w/6" Jointer & Honda Motor • 10" Table Saw w/ Honda Motor • 20' Flex Shaft w/ Tools & HONDA Motor • 2 - 20' 1/4" Flex Shafts w/Drills & Grinder • H.D. 12" 6" Metal Brake w/Slider • David White Transit • Arbor Vise • 9' Hoist Frame on Casters w/Hoist • Assorted Chain Hoists • Rockwell Clutches • Used Galv. Metal • Shop Cart • Assorted Yankee & Miller Falls Breast Drills • 24' Walk Board • MISC. SHOP GOODIE WAGON!

ANTIQUES and COLLECTIBLES
 • 2 - Ice Saws • Ice Tongs • 3 - 2 Man Cross Cut Saws • Dinner Bell • Assorted Wooden Pulleys • Assorted Crocks & Wine Jugs

HOUSEHOLD RELATED ITEMS
 • 2 - HOOSHIER Kitchen Cabinets • SELLERS Kitchen Cabinet • FLAMEVIEW Wood Cook Stove • Oak Dry Sink • 40 Gal. S.S. Kettle w/ Jacket • 30 Gal. S.S. Kettle w/Jacket • 5' S.S. Ice Box • Perfection 5 Burner Kerosene Stove w/Oven • 2 - Perfection 3 Burner Kerosene Stoves • 1 Burner Kerosene Stove • Oak Cabinet w/Wood Box • Enamel Top Tables • SINGER Sewing Machine w/Cabinet • Mason Sewing Machine w/Cabinet • Sewing Machine Cabinets & Heads • Glider Rocker • Recliner Rocker • Hickory Rocker • Assorted Wall Clocks • Night Stands • Dressers • Toddler Bed • Kerosene Lamps • Lanterns Wind-Up Baby Swing • Tables • Assorted Chairs • Hall Trees • High Chairs • **MANY MORE ITEMS TO NUMEROUS TO MENTION.**

OWNERS: HARLEY and POLLY GLICK JOHN and KATIE BEECHY

AUCTIONEERS NOTE: Sale Order - 9:30 Misc. Wagons followed by Shop Items. Approx. 10:30 2nd Ring on Household items. Approx. 12:30 Farm Machinery followed by Horses. Mark your calendar and plan on attending another good Country Auction with us! Hope to see ya there!... LeRoy

AUCTION TERMS: Cash or approved check with proper I.D. Nothing to be removed until settled for. Not responsible for accidents. All announcements made day of sale take precedence over all printed materials. Out of state buyers must have bank letter of credit. Absentee and phone bids welcome to Pre-Qualified customers.

LUNCH AND BAKE SALE ON THE GROUNDS

Yoder Brothers Auction Service
 Specializing in Successful Auctions
 Auctioneers LeRoy and Willis Yoder
 9484 S. Rodgers Ave., Clare, MI • PH: 989-386-9082

AUCTION

**REAL ESTATE-13+ Acres-House-Barns
TRACTOR, TRUCK, EQUIPMENT, TOOLS
SAT., MAY 2, 2026 @ 10:00 AM**

Preview: Wednesday, April 22, 2026 from 5-6:30 PM

LOCATION: 1298 COUNTY ROAD T3
GRAND RAPIDS, OH 43532 zone 12

Real Estate offered at 10:00 AM followed by contents.

REAL ESTATE: Ultimate location for this 13+ acres, house & barns! Enjoy the fenced in livestock pastures, livestock barn and all the country views! Tax parcel 32-250086.0100 & 30-250088.0100 selling together, Washington Twp., Henry County, Otsego Schools. A Must-see property! See whalenauction.com for terms & more information.



TRACTOR, TRUCK, MOWER, EQUIPMENT & MORE: Case IH 485 w/loader, 16.9-24, 2008 unverified hrs, cylinder diesel w/rebuilt pump; John Deere 575 skid loader, diesel w/bucket and manual forks, 3033 unverified hrs.; 2013 GMC Sierra 2500 HD 4x4 extended cab long bed, 274,000 miles, 6.0L gas, like new tires; Big Tex 70CH 16' car hauler, 15" tires, re-decked; John Deere 1025R hydro, 204 hrs., 60" mower, 4x4, loader valve & hook up, 3 point; John Deere TX 4x2 Gator, 663 hrs. gas; Load Max 18' +5' gooseneck trailer, redecked, Ohio Title; 16' electric elevator; **TOOLS & MISC.:** Ridgid 6,800 watt generator; oxygen / acetylene torches; welder; air compressor; pressure washer; Stihl FS 40C string trimmer; DeWALT- 12" chop saw, drill, saw,

impact???, ladders; toolbox; Fimco sprayer; storage bins; yard tools; water tubs; lumber; Schwinn exercise bike; Fencing- 16' & 20' livestock feeders, (32) livestock gates- 4'-16'; 16'x16' livestock sale rings and more.

TERMS: Cash or check w/I.D., 3% convenience fee on credit cards. Lunch by Sandys.

Owners: Charles & Tina Thomas

WHALEN WHALEN
REALTY & AUCTION, LTD.

Auctioneers: John & Jason Whalen,
Mike Murry & George Bly
419-875-6317

Information herein deemed reliable but not guaranteed.

Moving Auction

Saturday, May 2, 2026 10:00 AM

King and Sue Andersen

1970 E. M115 Cadillac, MI 49601 zone 2

Directions: NORTHWEST OF CADILLAC ON M115 TO THE CORNER OF 29 RD.

LAWN EQUIPMENT

John Deere 1023E with 54" snow blower and mower, 240 hrs.
3 point disk, cultivator, rototiller
John Deere X330 lawn tractor with mower and bagger, 288 hrs. snow plow attachment has not been used,
John Deere metal lawn trailer
Stihl MS180C chain saw
Tozz chipper shredder
Cub cadet string and brush trimmers
Honda small tiller
Tractor/mower front end lift
Lawn trailer
Suitcase weights 40#
Planters
Metal water cans
Tomato cages, Lawn tools
Hedge trimmer
Leaf blowers, gas
Wheel barrow
Push mower
Post pounder
Gas cans, Lawn roller
Limb trimmer
Fertilizer spreader
Apple pickers

SHOP AND GARAGE

Single axel trailer
Vertical and horizontal metal band saw
Tool boxes
Rolling tool boxes
Large qty. of hand tools
Hardware, bolt bins
Socket sets
Floor and bench drill presses
Scroll saw, Shop vacs
Qty. of electrical components
Drill bit sharpener
Machinist level
Bench grinders
Power washer, electric
Hand dollies
12' step ladder
Wooden extension ladder
Air compressor, air tank
Metal saw horses
Scrap lumber
Vise
Table saw
Belt sander

Drill circular saw
Ryobi grinder

HOUSEHOLD

Drop leaf table with 2 chairs
Large buffet that matches the drop leaf
Large dining table with 2 leaves and 6 chairs
Dry sink, Table lamps
Air purifier
TV stand with storage
Stereo with turntable and extra Speakers
End table
Computer work station
King size bed
GE refrigerator
GE upright freezer
3' X 6' table with folding legs
Pots, pans, canners
Shelving
Royal handheld vacuum
Fans, card table
Proform treadmill
Carpet and vinyl remnants
Tupperware
Picnic baskets
Christmas decorations
Walkers, misc. hats
Misc. computer cords
Qty. canning jars
Book shelves
Bedroom mirrors
Microwave stand
Credenza
Dorm size fridges
Couch, Glider rockers
Step stool, Metal desk

SPORTING GOODS

Antlers
Hunting coats
Boots
Gunsmithing books
Filet and hunting knives
Bug vests
Fishing gear

GUNS

(you must have a purchase permit or a CPL to buy guns)
(guns stored off site until day of auction)
Ruger Blackhawk revolver, 357

mag with 38 cylinder
Ruger single 6 revolver, 22 mag, with 22 cylinder
High Standard 22 revolver
Marlin Golden 39M 22 lever
Winchester Model 94, 3030, pre 64
Stoeger 410 double barrel
Savage Fox B series M, 12 ga. Double
Daisy bb/pellet gun
Master 960 bb/pellet gun
Misc. ammunition
Targets
Small gun cabinet
Skeet throwers

ANTIQUES AND COLLECTIBLES

MARBLES hatchet with metal blade cover
Cedar armoire, Oil lamps
Hand painted and gold leaf plates
8 track tapes
Smith Corona typewriter
1920 Michigan map
Wooden rocking chair
Wooden dining chair
#2 crocks, USA
Bushel baskets
Corn and potato planters
Wash tubs
Antique tools in wooden trunk

CRAFT SUPPLIES

Pfaff serger and thread
Jar of buttons
Boxes of yarn
Crochet and knitting needles
Qty. of beads
Crochet, knitting, and sewing books

CAMPING ITEMS

Honda EU 2000i inverter generator
2 folding bicycles
20# propane tank
Coleman lantern
Plastic trunk with camping items
Ground cloth

NOTE: Home for sale, contact Daniella Bell, Caldwell Banker

Terms: Cash, check, Visa or Mastercard w/proper ID. All items sold as is with no guarantee. Nothing to be removed from premises until settled for w/cashier. Not responsible for accidents day of sale. Auctioneer acts as selling agent only. Anything Auctioneer announces overrides any written information. Lunch and restroom available.



Jim Lambert Auctioneers

McBain, MI 49657 - Jim (231) 633-5673

Visit our website and view pictures at: www.lambertauctions.com

COMING AUCTION

★ LARGE ESTATE AUCTION ★

SATURDAY, APRIL 25TH AT 10:00 AM

LOCATION: GRACE LUTHERAN CHURCH COMMUNITY RM., 239 E. NORTH ST.

DIRECTIONS: 4 blocks east of N. Broadway - M-43.

HASTINGS, MI 49058 zone 4

ANTIQUES & COLLECTIBLES: Lamps; Nice Variety of Glassware inc. Depression Glass, Cut Glass, Hand Painted Bowls, Etched Glass, Milk Glass, Crystal & More! Jewelry; Beer Steins; Brides Baskets; Cups & Saucers; Figurines; Silverware; Pictures & Frames; Marbles; Haegar Vases; Bells; Wind Bells; Glass Shoes; Carousel Horses; Whiskey Bottles; Silver Items; Lighters; Condiment Server; Sets of Dishes; Pottery Items; Brass Bells; Oil Lamps; Marble Items; Tea Sets; Hummel Figurines; Brass Bookends; Perfume Bottle; Small Furniture Items: Miniature Wall Hanging; Broad Ax; Cabinets; Living Room Items; Banks; Cribbage Boards; Wood Train Whistle; Metal Cars; Pocket Watch Fob; Round Oak Table & Chairs; Dressers & **More!!**

Generator & Misc.: 3500 w Generator; Air Compressor; Lawn Mower; Sporting Goods; & More! **This is another Estate of Royce Shepard of Marshall! Many Totes to go through yet at this time! Expect Many Surprises.**

KENDALL TOBIAS, AUCTIONEER
Hastings, Michigan • (269) 366-5415

For more go to www.auctionzip.com #23371.

PUBLIC AUCTION

THURSDAY, APRIL 23, 4:00 PM

LOCATION: 5075 RUSSCHER ROAD

HOLLAND, MI zone 4

FURNITURE: Skandia Furniture china/desk, oak dinette set; table and chairs; high-back bed; marble-top dresser; gun cabinet; dry sink; mid-century record cabinet/holder; treadle sewing machine cabinet only; upright freezer; Akorn Char grill; large wood box -- Johnson Detectable motor advertisement lettering; spoon carving dresser w/mirror. **MISC:** Singer Featherlight sewing machine w/ case; several lighted pictures; motion lamps; various lamps--Gone With The Wind, hurricane, vintage floor lamps, Tiffany style lamps; religious plaques; Fisher Price toys; canning jars; Hummel bells; gum/candy dispensers...

PLUS MUCH MORE ... BRIEF LISTING...

WATCH WEB FOR NEW ITEMS AS THEY COME UNPACKED!

OWNER, JERRY BOEVE

Mr. Boeve, local antique dealer, has moved and is now selling the contents of his home. Dales Auctioneering has been contracted to conduct the auction and to sell all items listed to highest bid.

Payment: Cash, check, Credit Card (5% fee).



DALE'S
AUCTIONEERING
SERVICE LLC

The Best in Auctioneering!

DALES AUCTIONEERING SERVICE LLC

Dale Flokstra, Auctioneer

(616) 836-3132

www.dalesauctioneering.com

Auction Zip: ID #24272

Rely on experience - serving the public since 1983. We take pride in our business, our reputation is built on customer satisfaction - Let us go to work for you.

COMBINED ESTATES AUCTION!

SAT., APRIL 25TH, 10:00 AM

Preview: 8:30 AM Day of Sale

LOCATION: AUCTION ACRES, 1491 Perry Creek Rd. & M-33.

DIRECTIONS: Auction Barn is located between the towns of Mio & Fairview.

Just 7 miles north of traffic light (M-33/M-72) in Mio or 2 miles west of blinking light (M-33/M-72) in Fairview.

MIO, MI 48647 zone 3

TO INCLUDE: Husqvarna serger & sewing related; Pine log & hickory bentwood furniture; Leather living room furniture; Dine & Bedroom furniture; household; Hearth Focus pellet stove; Rocks & minerals; estate & costume jewelry; Playstation games & systems; antique barber chair;

SPORTSMAN/FIREARMS: Decoys; knives; Center hole creel; Elk & deer mounts; Rods, reels, Tackle boxes; Springfield XDE 45calpistol; Winchester mod. 97 12ga; Ranger mod. 30 12ga; Mossberg 385 20ga; Winchester Ranger lever action 30-30;

SHOP/OUTSIDE: 2015 Ford F350 4x4 pickup truck; Boss V & 2 Western snow plows; 18' Steel deck beavertail car haul trailer; 15' Drop gate open trailer; 24' Enclosed jobsite office trailer; 2001 Ski-Doo MXZ600R & 92 Formula Plus snowmobiles; (2)Ryan Jr. sod cutters; (2)Ryan Lawnaire Roller IV aerators; Power broom attachments; Garden Denver towable diesel powered air compressor; Salvaged treated lumber; Shop tools & garage;

AUCTIONEER'S NOTE: I'm Back! I sold the auction a year ago after losing my bride of 36 years. I appreciate all the support my customers gave the new owners, unfortunately life's plans have changed and the new owners have decided to move closer to family. So I came out of retirement, bought the auction back, and look forward to building more awesome auctions to share with you. Check website for updates & 100's pictures.

Look forward to seeing you at the Auction! Thanks, GREG

TERMS: Cash, MI. check w/valid I.D., Visa, MC, Discover, register with valid driver's license. A 5% buyer's premium in effect for Credit/Debit Card use. All items sell "As Is Where Is". Auctioneer is not responsible for items after Sold. Announcements day of sale take precedence over printed material.

LET'S TALK AUCTION
COMPANY
MIO, MICHIGAN
Auction Acres: (989) 848-5158
www.LetsTalkAuction.com

AUCTION SUNDAY APRIL 26 @ 12 NOON

LOCATION: 405 BUCK RD
COLDWATER, MI 49036 zone 5

Visit AuctionZip.com #26461

ESTATE OF DEAN & LOIS WILLIAMS

Burns Auctioneers
Stephen Burns • 517-617-5487
728 N. Union City Rd. • Coldwater, MI 49036
E-mail: burnsauctioneers@gmail.com
Web: www.burnsauctioneers.com

Feed Your
Auction
Addiction
With
The Auction
Exchange
And
Collector's
News!



INCREDIBLE COUNTRY ESTATE ONLINE AUCTION!

HOWELL, MICHIGAN 48855 zone web
Bid on a vast amount of quality country antiques, furniture, collectibles, and garage contents in this pristine estate.
OVER 150 LOTS!



The real estate which features a beautiful home nestled on 8+ wooded acres with pole barn and detached garage will sell on May 9th. See website for details

Visit www.MichiganAuctionCompany.com
to view the catalog.

Shafley Retirement On-Line Auction

6728 N. River Road
FREELAND MI zone web

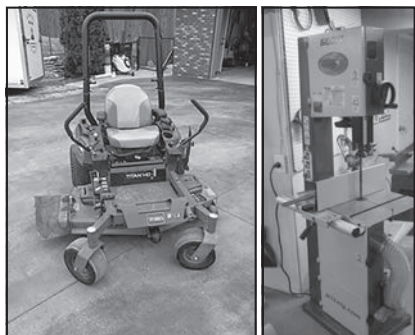
(From the light in Freeland go west 1-mile to River Road, then south 1 1/2-miles to site)

Bidding Open: April 22-April 30 @ 7 pm

Pickup/Payment: May 1, from 1-4 pm; May 2, from 9 am-12 pm

Inspection by appointment with auctioneer.

Auctioneers Note: Very nice well-rounded sale w/items very well kept. Check website for updated information & photos



Auction Highlights:

Toro Titan H.D. 24 h.p. 52" Z.T.R. mower (excel.) * Nice line of Toro gas powered outdoor equipment* Fimco 30 gal. poly trailer sprayer * Stihl gas chainsaws* Kobalt roller tool chest * Freestanding woodworking equipment * Hand & power tooling * Well kept quality built interior & outdoor furnishings * Household & general merchandise

Wegner Auctioneers (989)793-8689
wegnerauctioneers.com

Essential information and advertising for lovers of Antiques, Collectibles, Estates, Farm, Real Estate and Commercial Auctions
Advertise or Subscribe Now!
888-339-3795 | info@eauctionexchange.com
eauctionexchange.com

GERALD AND FRANKIE FROST LIVING ESTATE AUCTION SAT., MAY 9th, 2026 10:00 AM

LOCATION: 3034 45th AVENUE
DIRECTIONS FROM REMUS: Take M-66 south 5.5 miles, turn right onto Jackson Rd., go 1.5 miles, turn left onto 45th Ave. to the sale site, watch for signs.

BLANCHARD, MI 49310 zone 5

This auction includes a Farmall 1066 with new turbo, low hours on a rebuilt engine. Several running restored antique tractors, several toy tractors, antiques and misc. items. For pictures go to Ryanhansonauction.com.

TRACTORS/FARM EQUIPMENT: Farmall 1066 w/cab, new turbo & low hours on overhaul, 1950 Case Vac narrow front, 1952 Case SC wide front Eagle hitch live power, 1951 Case DC narrow front, 1952 Case DC wide front Eagle hitch live power, Minneapolis Moline 2, 1951 Ferguson TO/ 30, Dakota 25' 10 ton dual axle tandem goose neck, Win power PTO generator on running gear 20kw 125 amp, 1966 Ford 600 dump truck, Case one row corn picker, Oliver 2 bottom trailer plow w/hydraulic lift, Ford 6' flail mower, Large wood splitter, John Deere 494 corn planter, Innes 4 row 570 bean win rower w/conveyer, Myer 7 1/2' truck plow, Knowles running gear, 3 point brush hog, Pull type King Kutter brush hog, Home built Case 220 4 wheel drive articulating w/dump box, Case hydraulic drive 222 w/custom narrow front end, Case 446 hydraulic drive riding lawn mower w/deck, Case 222 garden tracker, 2 person people mover, Boxes of Case magazines, Farm collector magazines, Case mower deck & snowblower, Huskee rear tine rototiller w/Honda engine, 2 person paddle cruiser aluminum, Large set of log tongs, Johnson PTO well irrigation pump, 33 30' 6" aluminum irrigation pipes, 7 40' pipes w/misc. Elbows, Homemade irrigation pipe mover, 2 duel 38 rims, Several tiller teeth, 11-38 rear tractor chains. **OUTDOOR RELATED:** Pipestands, Coats tire changer, Bead breaker w/hydraulic on stand, 2 8-5-14 6 bolt tires hold air, 13-6-38 tires w/tubes, 15 hp Johnson outboard, Polaris 432 snowmobile engine, 1977 750 motorcycle non running, Pressure washer, Large floor jack, Several I&T tractor manuals, 1984 400 engine, Case wide front for 400, Case wheel weights, Used 9x9 overhead door, Oster sheep shears, Lister sheep shear, Black & Decker valve grinder, Misc. gates, gate hangers, Several toy tractors, 12 gauge Model 1300 3 inch rifled barrel Weaver 2 1/2x7x32 scope, Citadel AR style 12 gauge shotgun multiple chokes with 3 magazines. **ANTIQUES:** Large dinner bell, Washstand w/2 galvanized tubs, The Root-Heath Mfg. Co. grist mill, Plymouth No. 2 hand corn sheller, Restored International hand corn sheller, Hoosier cabinet, Wood cook stove, Several crocks including #20, #15, 2-#12, Several smaller crocks, Milk bottles, Bottle carrier, Several Wagner Ware cast iron, 11" skillet, 10 1/2" skillet, Large & small logo, Large enamel coffeepot, Several enamel pots & pans, Kraut cutter, Butter churn, Wood butter churn, Hand crank coffee grinder, Cowbells, Blue jars, Wheaton glass, Restored Perfection oil heater, Several burlap seed corn bags, Several Fiesta dinnerware pieces, No. 16 DeLaval cream separator, Corningware, Several glass bottles, Pyrex bowls, Several Hull pottery teapots, Jars of buttons, Rooster weather vane, Several barn lanterns, Hand crank icemaker, Small scale, Hay saw, Restored Black Hawk corn sheller, Restored sharpening stone, Cigar boxes, Restored pitcher pump, Milk can, Glass fuel drip jar, Rope block & tackle, Hand corn planters, Set of 4 hay hooks, Hay trolley, Duck decoys, Beam drills, Corn knives, Smudge pots, Large dehorers, Bull nose tong, Several wood barn pulleys, Restored Champion tractor seat, 2 wash boards, Copper kettle, Cow stanchions, Ice runner sleds, Platform scales, Sea Bee outboard motor stand, Carpenter boxes w/tools, Misc. oilers, Town Club pop box, draw shave, Western Electric metal fan, Canning jars, stock pots, Foley food mill, Leather couch.

RYAN HANSON AUCTIONEER

Terms and Conditions: Cash or good check with ID.

Nothing removed until settled for.

Not responsible for accidents, lost or damaged items.

Verbal statements at time of sale take precedence over written document.

231-796-3784 or 231-250-9569

Website: ryanhansonauction.com

For a complete list and pictures find us on gotoauction.com ID#1959

MOTHER'S DAY WEEKEND

May, Sat 9th & Sun 10th, 2026

10 AM - 4 PM

ANTIQUÉ & VINTAGE SALE

On our 1800's farmstead shop, the Barn, Granary, Little Red Shed, & Pavilion for Unique Vintage Treasures & Timeless Antiques. Additional vendors on lawn. Enjoy yummy cinnamon rolls, sandwiches, & beverages.

CENTENNIAL FARM ANTIQUES

4410 W. Howe Rd. DeWitt, MI 48820

Barn is open the 1st Sunday of each month, April - November 12pm - 4pm. Other times please call ahead. Always stocked with a diverse selection of home decor, lighting solutions & furniture that tell a story; haven for decorators.

Don't forget our 19th Annual October Antique Festival Sat 10th Sun 11th 10 AM - 4PM.

Jill, the Farmer's Daughter @

517-669-5096 or 517-281-5474

Facebook.com/CentennialFarmAntiques

FLEA MARKETS • ANTIQUES
EDUCATION • WANTED
COLLECTIBLES • SERVICES
ANTIQUES SHOPS • SHOWS

CLASSIFIEDS

FLEA MARKETS • ANTIQUES
EDUCATION • WANTED
COLLECTIBLES • SERVICES
ANTIQUES SHOPS • SHOWS

SERVICES

MIRROR RESILVERING: Quick Service. 313-521-1888. Frank Wright Glass, 14808 Gratiot. Detroit, MI 48205. Call for quotes. www.frankwrightglass.net

S
Farm, Barn, Rural, Painting Services. Building Restoration and Roof Coatings. PRIME FINISH PAINTING, Commercial. Industrial, Residential. (574) 229-9440. primefinishpainting@gmail.com, PAINTINGINDUSTRIAL.US (3626)

WANTED

WANTED: Always buying rare antique motors. Outboard and inboard also early race boats. E-mail: bjoutboards@gmail.com 989-326-0727 B.J. Pawlaczyk

S
WANTED: Corvettes wanted 1953 to 1967 any condition. Collections preferred. Paying a pirate's ransom! Email: terry@proteamcorvette.com Phone 419-592-5086 (4426)

Denotter Auctions
Weekly Online
Estate and Consignment Auctions
Antiques, Collectibles, Vintage
www.denotterauctions.com
224-392-3101



With the best coverage around, how can you afford *not* to advertise?

The Auction Exchange & Collectors News

ADVERTISERS!
Verify that your ad was received! Whether you faxed or e-mailed, call toll-free for verification:
888-339-3795

Since 1978 the Weekly Auction & Collectors Guide for Michigan, N. Indiana and N.W. Ohio

★ VENDORS WANTED ★
Free booth space available @ our
ANNUAL ANTIQUE ADVERTISING SPECIALTY SHOW
March 2026
Located at the Indiana State Fairgrounds, Indianapolis. This is one of the largest markets for only 40+ year old advertising in the world. Signs, displays, clocks, and all other forms of vintage advertising.
For info: IAAshow.com
Contact: damongranger@gmail.com

248-910-6765

INDY ANTIQUE ADVERTISING SHOW
September 2026
Boone County Fairgrounds
1955 Indianapolis Ave., Lebanon, IN
IndyAdShow.com
damongranger@gmail.com



2/2026

Buying? Selling? Promoting?

TRY AN AUCTION EXCHANGE CLASSIFIED!

Classified ads are limited to Antique Shows & Shops, For Sale, Services, Education and Want Ads. • No auction ads or tag sales.

An Auction Exchange classified ad is only \$6.25 per week for up to 15 words and 25¢ for each additional word.

Please print legibly and include name, address or phone number & town as it will appear in print.

Name _____

Street _____ City _____

State _____ Zip _____ Phone _____

CLASSIFICATION: (i.e. Wanted , For Sale) _____ Please run my ad for _____ weeks.

YOUR AD, AS IT WILL APPEAR	_____	_____	_____	_____	_____
	_____	_____	_____	_____	_____
	_____	_____	_____	_____	\$6.25
	_____	_____	_____	_____	\$7.50
	_____	_____	_____	_____	\$8.75
	_____	_____	_____	_____	\$10.00
	_____	_____	_____	_____	\$11.00
	_____	_____	_____	_____	\$12.25

All classified ads must be pre-paid
Please send ad with check made payable to The Auction Exchange • PO Box 90 • Knightstown, IN 46148-0090

EVERY BUT THE HOUSE

MARKETPLACE FOR THE UNCOMMON



EBTH is honored to present this extraordinary collection celebrating the defiant spirit and creative legacy of Eric Weinbrenner, founder of Paint for a Cure. Explore a bold selection of monumental pop art, nostalgic neon, and contemporary furniture that reflects a life lived with strength and whimsical wonder. **Bidding is open April 20th-26th.**

