

THE AUCTION EXCHANGE[®] And COLLECTORS NEWS

\$150

ANTIQUES • COLLECTIBLES • ESTATES • FARM • REAL ESTATE • COMMERCIAL

www.eauctionexchange.com

November 12, 2024

Vol. 47 No.49

ACROSS THE AUCTION BLOCK

Blue Harlequin teapot poured a \$20,000 bid at Strawser

BY KARIN MILLIMAN

WOLCOTTVILLE, Ind. — While Fiesta was the highlight of a recent two-day auction conducted by Strawser, it was another piece by Homer Laughlin that ended up taking top

bid honors.

In 1936 F.W. Woolworth reached out to Homer Laughlin and asked the firm to make an exclusive line for their store just in time for the Christmas holidays. The store released 16 pieces in four new colors. A Harlequin

blue teapot that was part of that line was offered at the Strawser auction. It was from the John Belsom/George Dansker Collection and is the only one known to exist. It ended up reaching \$20,000.

Several of the Fiesta serving pieces were in great demand. A simple white-glazed onion soup bowl with red striping attracted much interest. The finial handles, the top handle on the lid, and the upper edges of the soup bowl had contrasting red striping, which set this one off. It reached a final bid of \$13,000. A green onion soup bowl was sold for \$850, while a Fiesta cream soup bowl of medium green coloring brought the same final bid.

A pair of Fiesta candleholders in a beautiful, brilliant green had decals that were in mint condition. The candleholders sported a yellow sun surrounded



Above: This blue Harlequin teapot had the bidders competing for top price. It whistled in at a final bid of \$20,000, making it the top-selling piece at the Fiesta auction.

by a reddish glow and some black stars floating around. This gorgeous pair was sold for \$950, and a second pair brought a bid of \$700.

Several dancing lady cookie jars in just about every color were sold. The best price was \$2,100 for an orange one. A yellowish-green one and a blue

one brought a bid of \$600 each.

Ramping up the price was a daffodil two-cup tea-

See Strawser Page 4



Above: This ivory-colored sugar bowl, with red stripes, came in with a sweet bid of \$1,100.

FEATURE

Blast into space with Archer Plastics

BY LARRY LEMASTERS

Following World War II, plastics, especially injected plastic molded toys, became the toy frenzy of the future. As the Space Race escalated between the United States and the Soviet Union, toy manufacturers raced to keep pace with the public's fascination with space. From the late 1940s until 1969 when the United States landed a man on the moon, the fascination with space toys practically led toy production.

Archer Plastics, based in Elmherst, N.Y., was one of these early space

Left: Archer hard plastic Spacewoman that is valued at \$8.

Right: A mint conditioned Archer Space Port set. This Space Port is now part of the National Air and Space Museum in Washington D.C. One of these Space Port sets sold in 2016 for \$1,560.

toy companies that adapted its factories for plastic injection molding. During the 1950s the firm was best known for their line of space people and futuristic space vehicles. It is estimated that Archer made and sold millions of these space toys.

Bob Genin, a tool and die maker and mechanical engineer founded Archer Plastics. Under Genin's artistic management, Archer produced spacemen, space ships,

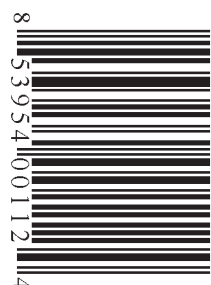


space vehicles, and space play sets in a variety of showy colors.

Archer produced the Archer Space Port, one of the great space toys of all time, in 1952. This Space

Port was made of lithographed tin and was 15 inches wide. U.S. Metal Toy Manufacturing Company manufactured

See Archer Page 14



SINCE 1978 THE WEEKLY AUCTION & COLLECTORS
GUIDE FOR THE GREAT LAKES REGION

ANTIQUES - POTTERY - HOLIDAY AUCTION

SATURDAY, NOVEMBER 23RD, 2024 - 10:00 AM

LOCATION: GRAND LEDGE MASONIC HALL - 200 W. RIVER STREET

GRAND LEDGE, MICHIGAN **ZONE 5**



ANTIQUES & PRIMITIVES: An outstanding array featuring: Antique two counter-top sized wooden dough boxes; Wooden bowls; Wooden full-size and miniature butter presses; Sterling; Majolica; Grouping of miniature lamps; Antique button collection; Miniature sad irons; Native American quill work and woven baskets; Quilts; Mantle clocks; Baskets... **MAGIC:** a collection of magicians, props, publications, and tricks (Needle through Mirror, Jumping Rabbits, Silk Vanish, Spirit Bell, etc.); Early Michigan shipping and UP photos... **Art:** Antique miniature portraits; Original oils "Lace Maker" by AC Henkel, "Mother and Child" by GK Heflinger, Mavique, Russian icons...; **Art Glass & Metals:** Tiffany signed bowl; Two Charles Lotton signed vases; Two Loetz art nouveau vases in metal Victorian frames; Loetz silver-clad vase Tiffany sterling 16-pc. "Providence" set; Tiffany & Co. perpetual calendar NIB; Ornate Loetz pulled feather; Wheeling peachblow JIP vase; Pairpoint Burmese JIP vase; Women's black "Saga" full length mink coat; Stained and slag glass table lamps; Multi-lily Tiffany style lamp; Inuit carvings... **Don't miss this special auction event!**

POTTERY: Over 150 examples of American Art Pottery by **Roseville** (Pine Cone, Futura, Snowberry, Freesia, Wisteria, Ba-

neda, Moss, Fuchsia, Foxglove, Bittersweet, Bushberry, Waterlily, Bleeding Heart); **Weller** (Dickens Ware, Blue Drapery), **Rookwood, Door, Ephram Faience, Marblehead, Pillin, Motawi, Hull Art, Pewabic**, and rare Freiwald "Icarus" vase. Franciscan "Desert Rose" set ...

TOYS & HOLIDAY: We continue with a great holiday collection direct from Green Bay, Wisconsin filled with antique hanging and clip-on ornaments, Victorian wire-wrapped ornaments, German wire Christmas basket ornaments; Cotton and tinsel flats, German and American antique candy containers, Belsnickels, Putz houses, Santa blow mold; Feather tree, **Christopher Radko "Early Years"** and designer ornaments to be sold in super single and multiple lots! ... **Early to Mid-1900's Toys:** Buddy-L ladder truck, wooden floor toys and windups, metal wagons, ride-on locomotive, metal tops, large Madam Alexander (like new) dolls in original boxes etc. ... **Visit our website for more information, photos, and catalog.**

TERMS: Payments by Cash or Credit card (3% added). In-house Buyer's Premium of 10%, 20% from absentee bidding. Checks from established customers. All items sold as found.



Visit our website for a complete auction catalog with photos!

AMERICANA AUCTIONS
517-243-9090
AmericanaAuctions.com



COUNTY LINE EXCAVATING ONLINE AUCTION WEDNESDAY, NOVEMBER 20 BYRON CENTER, MI



- 2013 CAT 924K Wheel Loader
- 2004 CAT 277 Track Skidsteer
- 2018 CAT 279 Track Skidsteer
- 2013 John Deere 700K Dozer
- 2018 John Deere 650K Dozer
- 2020 Kenworth T880 Tri Axle
- 2016 Kenworth T800 Glider, Quad
- 2007 Kenworth T800
- 2005 East Aluminum Pup Trailer
- Aluminum Pup Trailer
- Interstate Tag Trailer
- 2012 Ford F250 Flatbed Plow Truck
- Truck Plows
- Attachments

Plus Much More



**MIEDEMA'S
ORBITBID**

VIEW ALL ITEMS IN DETAIL
AND/OR BID AT ORBITBID.COM
OR CALL OUR OFFICE
AT 616-261-4987.

HARNESS POWER TRUCK & VAN LIQUIDATION



ONLINE AUCTION
Thursday, November 14 | Byron Center, Michigan

- (3) 2023 GMC Sierra 2500HD Pro Crew Cab
- (4) 2022 GMC Canyon Elevation Extended Cab
- 2022 GMC Sierra 1500 Elevation Crew Cab
- (2) 2020 GMC Savanna Express G2500 Cargo

Plus Much More



VIEW ALL ITEMS IN DETAIL AND/OR BID AT
REPOCAST.COM OR CALL OUR OFFICE AT 616-261-4988.

**MIEDEMA'S
REPOCAST**



ANNUAL AUCTION EXTRAVAGANZA

FANTASTIC AUCTION! 2 RINGS THE 1ST HOUR
THURSDAY, NOVEMBER 21ST @ 10AM

LOCATION: 5121 E. MICHIGAN AVE.

DIRECTIONS: Take Michigan Ave (US-12) to Auction. The Auction is West of Clinton MI and East of Brooklyn and Onsted MI.
The auction is on the South side of US 12 - look for signs. Tipton is located in the Irish Hills area

TIPTON, MI 49287 zone 5

Ring One: Train Collection, Sports Memorabilia & Wildlife Related
Ring Two: Jewelry, Coins, Stamps, Books, Records & Items of Interest

After that the main event will include: Advertising, Antiques, Furniture, Toys, ETC.

The Estate we are working with still has a house full that will be in this auction

10% Buyer's Premium * Cash, Check or CC (add 3%) with ID.

**Braun & Helmer
Auction Service**

Questions? Call
David Helmer
(734) 368-1733
www.BraunandHelmer.com



**CHECK WEBSITE
FOR UPDATES**

Strawser

FROM PAGE 1

pot. This one was an exceptionally rich-looking yellow glaze with daffodil decals and some green leaves scattered around. It was sold for the most impressive final price of \$3,750.

A pair of sugar bowls sold for \$1,100 each. An ivory example had the same red striping as the onion soup bowl and one the other was so dark it appeared black.

A maroon Harlequin high-lip creamer sold for \$800, while a Harlequin relish tray with all of the compartments a different color reached \$500.

Some pieces were offered for sale in the original boxes and sold as complete sets. An original juice set brought a bid price of \$700. A four-piece place setting in the original box was sold for the bid of \$425.

For more information on Strawser Auction Company, contact 260-854-2859 or www.strawserauctions.com



Above: This white onion soup bowl with red stripes was sold for an impressive bid of \$13,000.



Above: Harlequin individual salad bowl group in 11 different colors sold for \$160



Above: This relish tray, which comes in five different colors, would match any Fiesta setting on a dinner table. It sold for \$500.



Above: Still in the original box, this juice set was tucked away for \$700.



Above: Called a high-lip creamer, this one looked more important than the rest with a maroon color and a final bid price of \$800 for this Harlequin piece.

1986 Chevrolet Silverado drove a \$7,700 bid

BY KARIN MILLIMAN

CLARE, Mich. — The A Yoder Auction company recently held the Gilchrist living estate auction in Clare, Mich. With Aden Yoder at the helm and Norm Yoder assisting with the auctioneering services, this auction moved right along. There was a lot to sell, and it was a scorching day, so they started right on time to get the items sold and the bidders out of the sun.

The biggest draw at this auction was a 1986 Chevrolet Silverado. It had less than 300 miles on the motor and was powered by a 350 engine. Driving this truck home took a final bid price of \$7,700.

A 1999 Club Car golf cart generated its share of interest. This clean unit still had lots of hours of life left on it. The tires appeared to be in good shape, and the red paint job still gleamed like it did in the showroom. It brought a high bid of \$2,600 to own this mode of transportation.

An enclosed trailer was sold. This red 5 by 8 foot trailer was titled. It was sold for \$1,600. A slide-out for the bed of a pick-



Above: The United States Armed Forces marked this license plate as dated 1956. The final sale price was \$100.

up truck was hauled off for a bid of \$275.

If you were in the market for something to play with, three boats and a kayak were sold. The kayak was taken away for \$50. A 14-foot fishing boat commanded a bid of \$100, and a 12-foot boat sold for \$550.

A Troy-built rear-time rototiller started right up, selling for \$150. A 4 foot disc brought a bid of \$50, and a 4 foot drag was marked sold for \$120.

A John Deere 111 lawn mower with a snow blade was offered. It was sold with a new battery and driven off for a final bid of \$150. A Wheelhorse

lawn tractor was sold for parts only. It also had a new battery in it, and it fired right up. It only took a bid of \$100 to own this vintage workpiece.

Looking at some of the items in the toy area, a Marklin Delta 2995 train set was auctioned off. This was an HO gauge steam starter train set. It was still housed in its original box and was quickly tucked away for a high bid of \$180. A dollhouse caught the attention of many in attendance. It brought a final bid price of \$25, and the pieces inside went with it for the price.

An Ertl John Deere pedal tractor was in like-new condition and sold for \$150. A yellow John Deere pedal car that was new in the box was also selling for the same price.

A United States Armed Forces vehicle plate from 1956 saw interest. The top oval placard said USA in blue letters on a white background. The plate itself was dark blue, and it said, "US Forces in Germany" along the bot-



Above: Driven away for \$7,700, this 1986 pick-up had a lot of life left in it.

tom. It was marked sold for the final bid of \$100.

Several guns were offered for sale. A Winchester 61 22 pump rifle attracted the most bids. It wasn't tucked away until the bidding reached \$650. A Stevens 22-410 single shot over and under also attracted much interest. It didn't sell until the bidding price reached \$550, so it came in right behind the Winchester pump.

Several rifles were sold for a bid price of \$450. An Iver Johnson single-shot 28 gauge and a Mossberg 30-06 bolt action with a scope, which was new in the box, were sold for this bid price. The auctioneer mentioned that the Mossberg had likely never been fired. And selling for the respectable bid of \$350 was a Remington Model 1100 16-gauge semi-automatic

rifle.

A Wildcat crossbow came with the quiver, case, and scope. It was taken away for \$200.

A small cast iron kettle was sold for \$70. It came with a lid and had three legs to stand directly in a comforting fire—a large cast iron #12 kettle with the lid sold for \$85.

Some nice tools formed a ring around the inside of the garage. A Jet dust collector was marked sold at \$180, while a Jet brand joiner sold for \$200. A Jet drill press kept the bid at \$200.

A Rigid compound saw was loaded for \$200, and a cherry picker was claimed for \$140. A Jet BD 20-N metal mini lathe was complete with the tools needed to make something beautiful, and the entire lot sold for \$125.

A 3100-watt Champion

generator started right up. It was quickly sold for \$300.

Yoder Auction LLC can be reached at (989) 429-7049 or on its website at www.ayoderauction.com.



Above: This John Deere pedal tractor was an Ertl and sold for \$150 in mint condition.



Above: This Mossberg rifle with a scope brought in a bid of \$450.

ORDER FORM SUBSCRIPTIONS ← SAMPLE

THE AUCTION EXCHANGE
And COLLECTORS NEWS

PO Box 90, Knightstown, IN 46148-0090
Phone Toll Free (888) 339-3795, x134 • Fax (877) 223-3778
info@eauctionexchange.com



Free Sample Copy of *The Auction Exchange & Collectors News*
(One free sample per address per year)

SUBSCRIPTIONS: New Subscription Renewal

- \$42⁰⁰ for 1 year (51 issues)
- \$75⁰⁰ for 2 years (102 issues)
- \$104⁰⁰ for 3 years (153 issues)

Total enclosed: \$.....

Name.....

Address.....

City..... State..... Zip.....

Phone..... Email.....

This is a gift, please send a postcard announcing the gift subscription

From.....

I read *The Auction Exchange* for:

- Auction reviews Articles Advertising Other.....

Mail this completed form with payment to: PO Box 90, Knightstown, IN 46148-0090

CREDIT CARD ORDERS: 800-876-5133

Tony Gregory Publisher

Lorri Egan Publication Mgr./Advertising

Connie Swaim Managing Editor

Tari True Pre-press Manager

Auction Exchange and Collectors News
Published weekly except one week in December
(51 issues) and mailed every Thursday
ISSN: 0279-0950

Published by MidCountry Media, Inc.
27 N. Jefferson St., PO Box 90
Knightstown, IN 46148

Periodicals postage paid at Knightstown, Indiana
and additional mailing offices.

Subscription price: \$42.00 for one year
\$75.00 for two years; \$104.00 for three years

POSTMASTER:

Send address changes to:

The Auction Exchange and Collectors News
PO Box 90
Knightstown, IN 46148-0090

SUBSCRIBERS:

We print the advertisements as sent to us by
the auctioneer. It is not possible to check the
correctness of the listed items, *so before
traveling a long distance for a particular item,
contact the auctioneer first by phone.*

Publishers Emeritus:

John Armstrong, Randy Barz,
Judy Huxmann, Lars Svendsen

Reproduction in any form is prohibited without
the written consent of the publishers.

ALL RIGHTS RESERVED.

Please report late delivery

The Auction Exchange & Collectors News strives to provide customers with the best delivery possible. Recently, many of our delivery areas have been experiencing late delivery of the paper. *The Auction Exchange & Collectors News'* late delivery staff has been working closely with USPS to ensure you receive your paper on time, every time. If your paper is not delivered by the issue date, please let us know.

These areas experienced reports of late deliveries during the week of 8/13/24: Kingsley, MI, Marion, MI, Cedar, MI, Bellaire, MI, Byron Center, MI, Almont, MI, Irons, MI, Midland, MI, South Boardman, MI, Cadillac, MI

Our staff members will continue to address the late delivery reports we receive. We are constantly striving to rectify the late delivery problem. Please call our customer care center at (800) 876-5133 or email Kphipp@midcountrymedia.com or Skopp@midcountrymedia.com to report late delivery in your area. Please, also contact USPS at 1-800-ASK-USPS or 1-800-275-8777.

If you are experiencing consistent late delivery of all mail, we are encouraging you to reach out to your State Representatives to report the ongoing problems with late mail delivery in your area.

While we agree that the physical copy of the paper is the top priority, we do want to remind everyone that in the event your paper does not arrive by the issue date, the current issue is available to view on the website www.EAuctionExchange.com. The online issue is free to subscribers and totally keyword searchable. Thank you for your continued patience & support as we work through the issues with USPS.

GENERAL ADVERTISING INFORMATION

➔ **DEADLINE IS TUESDAY AT 12 NOON**

----- Unless otherwise noted -----

ADVERTISING SIZES AND RATES

1/8 page (5"Wx4"H) - \$83.80 1/2 page (10¼"Wx8"H) - \$315.56
1/4 page (5"Wx8"H) - \$157.77 Full page (10¼"Wx16"H) - \$546.15

Call for additional sizes and rates 888-339-3795

Open Rate

Our open rate is calculated at \$7.33 per column inch. Call for more information about our Low Cost Standard Open Rate (\$6.98/col.) which is based on a minimum of 10 point type in the body copy.

Display Advertising

Each page is six columns wide (10-1/4 inches) by 15-1/2 inches high. Each column is 1-5/8 inches wide. We use a minimum of 10 pt. type (for body copy) for purposes of readability, and specific point sizes for heading (24 pt.), date (18 pt.), city/state (16 pt.) so please keep this in mind as you plan your ad. We typeset your ad to fit our specifications while keeping in mind your requirements and the need to minimize the cost of your ad.

Back Cover Ads: Back cover ads are booked in advance by reservation - call for availability.

Deadlines/Sending Copy: Our deadline is 12 noon on the Tuesday before the issue date, (Tuesday). All material must be received by this time, including photographs. (Call for holiday schedules.) A 10% surcharge will be added to display advertising received Tuesday between 12 Noon and 3:00 p.m. We cannot always guarantee insertion of late ads. In all cases, it's a good idea to call and notify us that an ad is being sent, and to confirm that your ad has been received.

Mail Your Copy: 27 N. Jefferson St., Knightstown, IN 46148.

Fax Your Copy: You may fax your ad to us at: 877-223-3778.

E-Mail: Please send "Text Only" format, we cannot use files that have been saved in their native software.

Email address:
info@eauctionexchange.com

Photos: should be sent in JPG format, as attachments to E-mail. We accept color, or black and white.

Accuracy: Every effort is made to ensure the accuracy of your finished ad. Sending it to us well in advance is essential in allowing adequate time for proofing and faxing layouts to you for approval. We assume no guarantee or liability concerning the accuracy of published advertisements

ISSUE DATE	DEADLINE (NOON)
------------	-----------------

NOV. 19	TUES., NOV. 12
NOV. 26	TUES., NOV. 19
DEC. 3	TUES., NOV. 26
DEC. 10	TUES., DEC. 3
DEC. 17	TUES., DEC. 10
DEC. 24	TUES., DEC. 17
NO ISSUE DEC. 31, 2024	
JAN. 7	MON., DEC. 30
JAN. 14	TUES., JAN. 7



UPCOMING AUCTION CALENDAR

JANUARY FEBRUARY MARCH APRIL MAY JUNE JULY AUGUST SEPTEMBER OCTOBER NOVEMBER DECEMBER

The Upcoming Auction Calendar is a listing of future Auctions beyond the current week.

Auctioneers: This service is provided at no charge. As with everything - we do our utmost to make sure that your Auction is listed in a timely and accurate fashion.

For our Readership: For more thorough listings contact the Auctioneer personally and tell them where you saw their ad!

ZONE 3

Tue., Nov. 19, Lets Talk Auction Company, Sportsman, Firearm, Mio, MI

ZONE 4

Sat., Nov. 30, Dales Auctioneering Service LLC, Antique, Collectible, Holland, MI

Sat., Dec. 7, Miedema Auctioneering, Equipment, Hudsonville, MI

Fri., Dec. 13, Stantons Auctioneers, Firearm, Hastings, MI

ZONE 5

Sat., Dec. 14, Mel White Auctioneer, Farm, Owosso, MI

Thu., Nov. 21, Braun & Helmer Auction Service, Miscellaneous, Tipton, MI

Sat., Nov. 23, Americana Auctions, Antq., Pottery, Misc, Grand Ledge, MI

Sat., Nov. 30, Brian Hasty, RE, Farm, Misc., Reading, MI

Sat., Dec. 14, Mel White Auctioneer, Farm, Owosso, MI

ZONE 6

Thu., Nov. 14, Braun & Helmer Auction Service, Estate, Carleton, MI

Thu., Nov. 21, Michael Auction & Realty Service, Real Estate, Carleton, MI

ZONE 8

Sat., Nov. 23, Elvie J. Frey, Sr., Tractor, Equip, Tool, Wolcottville, IN

Sat., Nov. 30, Jerry Grogg Auct., Personal Property, LaGrange, IN

ZONE 12

Fri., Nov. 15, Whalen Realty & Auction, 2 Day Miscellaneous, Neapolis, OH

Sat., Nov. 23, Whalen Realty & Auction, Gun, Ammo, Misc., Neapolis, OH

Fri., Dec. 27, Aaron Mast, 3 Day Miscellaneous, Middlefield, OH

Be Sure To Say, "I Saw It In The Auction Exchange & Collector's News!"

Since 1978 the Weekly Auction & Collectors Guide for Michigan, N. Indiana and N.W. Ohio

JEWELRY & COIN AUCTION

SUNDAY, NOVEMBER 17 - 1 PM

PREVIEW @ 12 PM

LOCATION: HOME2 SUITES BY HILTON, 2569 TRAUTNER DR.

DIRECTIONS: From I-75/US-23, take exit #150 for I-675N, toward downtown Saginaw, go approx. 6 miles, then take exit #6, Tittabawassee Rd., turn west, take a slight right on Davis Rd., turn left on Hampton Place go ¼ mile, turn left onto Trautner Dr. and go 1/3 mile to location

SAGINAW, MI 48604 zone 6

ROWLEY'S AUCTION SERVICE has been commissioned to auction the fine jewelry, coins & collectibles listed.

AUCTIONEER'S NOTE: This is a wonderful opportunity to buy gorgeous jewelry at auction prices! Also, a nice group of antiques and collectibles.

Featured Gold & Diamond Jewelry Including:

1.80ct Diamond Ring, 1.40ct Diamond Ring, 2.50ctw Diamond Ring - F, VS2, 1ct Princess Diamond Solitaire, Princess and Round Diamond Ring, Pendant w/ 19ctw Princess Cut Diamonds, Tanzanite and Diamond Bracelet, 4ct Diamond Bracelet, Princess Diamond Invisibly Set Earrings, Men's Gold and Stainless Rolex (Like New), Men's Ring w/1ct Ruby, Ruby and Diamond Ring, Rose Gold Diamond Band, Infinity Diamond Pendant, Baguette Diamond Band, Diamond Halo Necklace, Pear Shaped Diamond Halo Ring, Rose Gold Diamond Wedding Set, Rose Gold Diamond Set, Men's Ring w/1.69ct Lab Created Diamond - VVS2, White Gold Diamond Band, Pink Sapphire and Diamond Purse Pendant, Rose and White Gold Diamond Band, 2.25ctw Diamond Link Bracelet, 4ctw Princess Diamond Bracelet, Emerald and Diamond Bracelet, Pink Sapphire Bracelet, Gent's Diamond Band, Wide Baguette Diamond Band, Citrine and Cognac Diamond Ring, 1ctw Diamond Necklace, Diamond and Lab Created Emerald Ring, 1½ cttw Diamond Earrings, Rope Bracelet, Bracelet w/ Circular Discs, Link Bracelet, 3-Row Pearl Bracelet, Ruby and Diamond Bracelet, Rose Gold Diamond Ring, Emerald and Diamond Earrings, Men's Diamond Link Bracelet, Ladies Diamond Bracelet, Rainbow Gemstone Bracelet, Bvlgari Watch, Rose and White Gold Diamond Ring, Gent's Diamond Band, Ceylon Sapphire Ring, Swiss Blue and Diamond Ring, Gent's Ruby Ring, Link Bracelet, Diamond Earrings, Garnet Earrings, Gold Hoop Earrings, Swirl Earrings, Diamond Heart Pendant, Heart Necklace, Amethyst and Chrome Diopside Earrings, Ruby Earrings, Watch Collection, Fashion Jewelry Collection

Gold & Silver Coins

1901 \$20 Gold, 1/10 Gold Eagle, 1913 2 ½ Dollar Gold, Silver Bars, Buffalo Nickel Collection, Proof Silver Eagle, Uncirculated Quarter Collection, 1 Oz Silver Collection, \$20 Silver Quarters, 1oz Silver Buffalo Coins, Silver Halves, 100oz Englehard Silver, Old Paper Money Collection, Jefferson Nickel Set, Ike Dollar Set, Indian Penny Set, Historic Coin Set, Mint Set Collection, And Much More Beautiful, Modern & Estate Jewelry Day of Auction! Over 500 Lots!

Antiques & Collectibles

Old License Plates, Pink Depression Plates, Ammo Boxes, Washington & Lincoln Portrait, Antique Car Horns, NASCAR 1:24 Scale Model Die Cast Cars, Hummel Figurine **And Many More Day of Auction!**



Terms: Cash, Major credit cards, checks with special arrangements. Layaway available. 8% Buyers Fee (3% discount on buyer's fee for cash and check purchases).



810-724-4035 • www.RowleyAuctions.com

AUCTION

REAL ESTATE - FARM EQUIPMENT - 65 OPEN EWES
SATURDAY, NOVEMBER 30TH, 10:00 AM

LOCATION: 6531 CARPENTER ROAD

READING, MI (HILLSDALE COUNTY) 49274 zone 5



Offering this 40-Acre livestock farm with 3 bedroom home, 64'x72'hay & livestock barn, 40'x60' barn with 3 large pens, horse stable & concrete lot; cement block double 2 milking parlor building w/milk house. Property is fenced & cross fenced for rotational grazing with sheep; having 29 tillable acres with 6 acres of woodland.

This property has had care and stewardship, from the house to the barns to the land, if you are looking for a livestock farm unit with home, this offering merits your attendance.

OPEN HOUSE DATES:

Sunday - November 10th, 3:00 PM to 5:00 PM
Saturday - November 16th, 3:00 PM to 5:00 PM
Tuesday - November 19th, 3:00 to 5:00 PM
OR BY APPOINTMENT W/AUCTIONEERS

Jeff Haines - 517-368-5173 or Brian Hasty - 517-206-4585

TERMS: \$10,000 down as deposit sale day, (non-refundable) balance on or before 45 days from sale date. Sale subject to seller confirmation.

EQUIPMENT & PERSONAL PROPERTY

TRACTOR: Co-op E4 good running condition, paint & tires.

EQUIPMENT: MC 9' flail mower/conditioner; John Deere Model L ground drive spreader; John Deere Model R spreader for parts; IH Model 10, 13 hole double disc drill w/seeder, trip lift; New Idea 3 pt. spin spreader; JD 12' spike drag; 150 bu. gravity wagon; 3 pt. post hole auger; flat bed hay wagon; 300 gal. sprayer; (2) older running gears; Glendale portable cattle squeeze shute; 475 gal. pu poly tank; Lincoln Power arc 4000 watt welder generator w/Honda Motor; 5500 watt 10 hp generator; EZ-Go gas golf cart; Troy-Bilt front sickle mower; 14'x10' portable building; 14'x8' portable hog coop; portable hay feeder; 12'x24' shelter on skids; 12'x16' shelter on skids; (7) 12' corral panels; (3) 14' tube gates; (3) 12' tube gates; (3) 10' tube gates; (2) 10'x12' barn doors; fence panels; sheep hay feeders; fence panels; multiple stock tanks; liquid totes; pallet racking; approx. 100 poly step-in posts; poly fence spinners; RR ties; PU livestock rack; (4) mineral feeders; 12 sheets of marine plywood; 500 gal. LP tank.

HORSE EQUIPMENT: 7'x14' covered wagon on rubber, hyd. brakes, lights, w/ tongue & evener; granite full-size work harness; leather full-size work harness, both with bridles & lines; (10) horse collars 22" to 29" some adjustable; ferrier supplies & lines; saddle, lines, horse tac; draft horse runner sled; fore cart; other horse eveners & gear; approx. 20 round bales, third cut alf/grass hay.

SHEEP: Approx. 65 Dorper/Katahdin Cross, open ewes, 7 months to 7 years old; 2 years old cross bred buck; 4 year old Dorper Buck from the "White Clover" farm New York.

HOUSEHOLD: Small amount of clean household items; including Crosley 26 cu. ft. chest freezer and upright freezer.

NOTE: Owners are retiring and moving to Bankers Lake very clean sale throughout.

BILL & ANIE BERRY - OWNERS

Not Responsible for Accidents, Lost or Stolen Goods After Sold



103 East County Line Rd.
Tekonsha, Michigan
517-741-4440
www.hastyauction.com

WEEKLY Auction Calendar

The Weekly Auction Calendar is provided as a service for our Advertisers and Readers. We make every effort to ensure accuracy of the calendar but always refer to the complete Ad to verify the Calendar information. Unless specified by the Auctioneer in writing we reserve the right to designate the 'Type' of Auction listing. © INDICATES THE AD APPEARS IN SECTION 2 OF THE PAPER

DATE	TIME	AUCTIONEER/SRV. CITY	TYPE	PAGE/SEC.
ZONE 3 MICHIGAN				
Sat., Nov. 16	10am	Lets Talk Auction Co. Glennie, MI	Miscellaneous	7
ZONE 4 MICHIGAN				
Thu., Nov. 14	10am	Art Smith Auctions Cedar Springs, MI	Gun, Antq., Misc.	10
Nov. 21-23	9am	Stantons Auctioneers Hastings, MI	Music Machine	11
Sat., Nov. 30	9am	Jerry Grogg LaGrange, IN	Personal Property	16
Fri., Dec. 13	8am	Stantons Auctioneers Hastings, MI	Firearm	11
ZONE 5 MICHIGAN				
Sat., Nov. 16	9:30am	Stantons Auctioneers Grand Ledge, MI	Estate	11
Thu., Nov. 21	10am	Braun & Helmer Auct. Tipton, MI	Miscellaneous	3
Sat., Nov. 23	10am	Americana Auctions Grand Ledge, MI	Antq., Pottery, Misc	2
Sat., Nov. 30	10am	Brian Hasty Reading, MI	RE, Farm, Misc.	6

DATE	TIME	AUCTIONEER/SRV. CITY	TYPE	PAGE/SEC.
ZONE 6 MICHIGAN				
Thu., Nov. 14	10am	Braun & Helmer Auct. Carleton, MI	Estate	10
Sun., Nov. 17	1pm	Rowley's Auction Svc. Saginaw, MI	Jewelry, Coin	6
Thu., Nov. 21	3pm	Michael Auction Carleton, MI	Real Estate	10
ZONE 7 INDIANA				
Nov. 13-15		Kraft Auction Service Valparaiso, IN	4 Day Tractor	8 & 9
ZONE 8 INDIANA				
Sat., Nov. 23	9:30am	Elvie J. Frey, Sr. Wolcottville, IN	Tractor, Equip, Tool	10
ZONE 12 OHIO				
Sat., Nov. 23	10am	Whalen Realty & Auct. Neapolis, OH	Gun, Ammo, Misc.	7
ZONE WEB				
Thu., Nov. 14		Repocast Online	Truck, Van	3
Sat., Nov. 16		Cryderman Online	Equipment	11
Wed., Nov. 20		Orbitbid Online	Excavating	3
ZONE CALENDAR				
Every Wed.	9am	Shipshewana Shipshewana, IN	Antique., Misc.	10

Need to Contact Us? Call: 1.888.339.3795 ext. 134
E-mail: info@eauctionexchange.com

ABSOLUTE AUCTION

FIREARMS-AMMO-KNIVES-CAR-ARTIFACTS

FISHING-STROH'S ADVERTISING

SATURDAY, NOVEMBER 23, 2024 @ 10AM

LOCATION: WHALEN AUCTION BLDG., 8020 MANORE RD.
NEAPOLIS, OH ZONE 12
 (GPS USE GRAND RAPIDS 43522)



113+ Firearms: One of the cleanest Winchester collections from the Late Raymond Reamsynder and others. Approx. 200 quality knives, Artifact collection from the late Lee Grime, 100's of Ammo!! Boat; Fishing; Strohs collection.

Car: 2008 Saturn Vue XR, rust free & super clean!! Very solid car. 3.6 V-6, 180K mi., auto, 4dr w/hatch back, power windows, OnStar, remote start.

Ring 1: 113+ Firearms. Long & handguns-see whalenauction.com for listing. **100's Ammo** - 100's & 100's of rounds incl. 218 BEE; 22 Hornet; 22 - 250; 22 Short & LR; 32 Short Colt; 22 WMR; 9mm Long Shot; 12, 20ga; John Deere model D-48 gun safe; Frontier model R6-540 gun safe; **Knives** - Approx. 200 knives incl. Case 1979 & 1980 Commemorative sets; Case 75th Anniversary set; Hunting Heritage collection set; Plus Bokers, Marbles, Buck, Fishing Rooster, Carl Schlieper, Winchester; Case Buffalo & Bulldog; Shark Tooth; plus sheath knives;

Ring 2: Artifacts - 50+ year collection from the Late Lee Grime from Delta, Ohio. Mostly all found within Northwest Ohio & Southern Michigan. All prehistoric periods, most marked where they were found. Including points, flints, stone implements, slate, hammer stone, celts, axes, nutting stone, slate gorgets, & pendants; **Boat** - Sylvan Super Snapper model 14B 4 person alum boat w/trailer, 15hp Johnson; **50+ Stroh's Beer advertising** - Bottle neon & lighted signs, taps, mirrors & more; **Fishing & Hunting** - 50+ fishing rods & reals, tackle boxes full, camping gear, hunting clothes, toys, marbles & more.

Terms: Cash or check w/I.D., 3% processing fee on all cards. Lunch by Sandy's. Any firearms sold out of state of Ohio require a FFL transfer. **Order of sale:** 1 Auctioneer selling firearms, ammo & knives, while another sells artifacts followed by fishing & Strohs collection. **Car & boat selling @ 12noon.** **Preview:** Week of auction from 8am-3pm. Firearms on display day of the auction only!








REALTY & AUCTION, LTD.
 Auctioneers: John & Jason Whalen,
 Mike Murry & George Bly
 419-875-6317
Information herein deemed reliable but not guaranteed.

AUTO MECHANIC, BUILDERS, HOUSEHOLD & 32 ACRE REAL ESTATE AUCTION

SATURDAY, NOVEMBER 16, 10:00 AM

LOCATION: 2792 US M-65, ALCONA COUNTY.
 DIRECTIONS: One mile north on M-65 from downtown Glennie.
GLENNIE, MI ZONE 3

TO INCLUDE: Leather sofa; futon; living room furniture; dinette; curved glass oak china cabinet; glassware, kitchenware + boxes & storage areas not yet unpacked; Polish written books; vintage green cream enamel Queen Anne gas range.


SHOP: Vevor auto chassis/body straightening platform machine w/towers & accessories; Bend-Pak model PR-9CX 9K lb. auto lift/hoist; other disassembled hoists; tall hoist jack stands & transmission jacks; 6) rolling mechanic toolboxes; qty hand tools too many to list; 3) 220v & 1) 110v air compressors; ASE TC950 tire changer; Ammco brake lathe; pneumatic impacts, sanders & other tools; floor jacks & stands; engine stand & cherry picker; lg fans; 3) steel workbenches w/vises; other vises; anvil; arbor presses; 4) drill presses; quantity of drill bits; Kalamazoo straight & other cut off saws; portable band saws; bench grinders; Port-A-Power units; chainfalls; 2) torch sets; Acetylene, Nos, Argon & Mapp gas tanks; cutting torches, hoses & related; wire welder w/argon; AC/DC & other welders; fab & scrap iron; VW engine; disassembled salvaged auto spray booth.

OTHER/BUILDING SUPPLIES: DoALL 3ph meat/bone bandsaw; farm gates; salvaged chain link fence; 25) 6'x 6' wood privacy fence panels; 16) 7/16 OSB & 16) 7/16 OSB T&G; 2x4 & 2x6 lumber; rough sawn hardwood boards; 7) new 78"x52" 7) new 78"x 52" vinyl windows; 25) new 8'x 3' sheets white barn tin; asst. scaffolding; 20' aluminum picks; Mark 1 Series alum. brake; step & extension ladders; Ridgid portable tri-stand chain vises; steel & alum. pipe wrenches; tap, dies & cutters; MultiQuid Honda powered cement mixer; electric cement mixer; Karcher HD 1050BX power washer; Graco airless paint sprayer; table saws; miter saws; surface planer; Titon plunge router w/table; dust collectors; MK 101 tile saw; 212cc 2" clear water pump; paint can shaker; Generac 30amp home standby generator; Clayton wood & coal furnace; Old Mill wood stove; bicycles.

OUTSIDE: New Holland 1925 4WD diesel tractor w/loader - engine runs, 757hrs, transmission case broken; Belarus 825 4WD tractor-non-running; Allis Chalmers WD45 tractor; 3 bottom wheeled plow; 14' alum. boat w/trailer; Nissan 8hp O/B; log chains & binders; Cub Cadet & Craftsman 2 stage snow throwers; Huskee 22 ton log splitter; Stihl chain saws; backpack blower; wheelbarrows; BBQ.

COMMERCIAL JANITORIAL: 6) Vision & Encore models Clarke electric floor scrubber machines; electric & propane powered floor buffers; Omni Dry 1/3hp high output floor dry blowers; Kent wide area vacuums; backpack & other vacuums; rolling janitor dump & cleaning carts; mop buckets; & more.

REAL ESTATE: sells at 12 noon, 32 acres w/4BD 1Bath 1050sq ft home in need of repair, 2 large outbuildings & 2 unattached garages, commonly known as 2792 M-65, Glennie, MI 48737 Parcel Number: 031-008-400-024-00 Terms - This will be a cash sale, due to its remodel/renovation stage, & likely doesn't qualify for conventional financing. Seller reserves the right to accept or refuse final bid price. A \$5,000.00 non-refundable deposit is required upon seller's acceptance of final bid. Lets Talk Auction will be conducting an auction method of competitive bidding to secure the current market value only of this real estate, the final bid acceptance & real estate transaction will be between the purchaser, seller and real estate agent Jon Klukowski, 45 North Realty 135 Chisolm St., Aplena, MI, 989-335-3342 w/questions.



Auction Acres: (989) 848-5158
 www.LetsTalkAuction.com

AUCTIONEER'S NOTE: Lets Talk Auction Company has been commissioned to sell household, shop and large items in this estate with no reserves, off road parking available bring trucks & trailers! 2 Auction rings with Matthew Tuttle & Aden Yoder. View our website for more details & pictures.

4 Day Fall Collector Tractor & Vehicle Auction

Located at 48 N 450 E • Valparaiso, IN



Online Only Auction Lots begin to close:
November 13th and 14th @ 5:30pm CST

Shipping is available

Live and Online Auction November 15th and 16th starting at 9:30am CST
Auction Preview: Nov. 12th-14th 9am-4pm and each auction day at 8am.

Auction Pick-up: November 13th-16th 9am-4:30pm and November 18th-22nd 9am-4:30pm CST

DAY 1

November 13th Online Only
Beginning to Close at 5:30pm CST

700+ Lots of Antique and Vintage Tractor Literature and Memorabilia



DAY 2

November 14th Online Only
Beginning to Close at 5:30pm CST

350+ Lots of Antique and Vintage Automobile Literature and Memorabilia



DAY 3

November 15th Live and Online Auction
Starting at 9:30am CST

300+ Lots of Antique Tractor and Engine Parts - Steam Whistle Collection
130+ Gas Engines and Engine Equipment
Engine highlights includes 1911 Root and VanDervoort 20HP Engine
800+ Lot of High Quality Farm Toys and Pedal Tractors
Toys include the outstanding Brian Bricker pulling tractor collection and a lifetime private collection over 100's of custom farm toys and pedal tractors

Please note we will start with whistles and parts at 9:30am, will start engines at approximately 12:30pm, and then will move into the toys at 2:30pm.



DAY 4

November 16th Live "Drive-Thru" and
Online Auction Starting at 9:30am CST

300+ Lots including Antique Tractors, Antique Trucks, Brass Era and Pre 1930's Cars, Custom Pedal Tractors, Neon Signs, and Memorabilia

This auction will feature the Nikodym Collection of Grand Island, NE, The Malleck Collection of McCook, NE, The Brian Bricker IH collection of Bainbridge, GA, and The Severt Collection of Girard, KS.

Auction Highlights: Rumely Model 30-60 E, 15-30 F, 30-60 S, 20-40 G, 16-30 H, 12-20 K, 15-25 L, 20-35 M; 1919 Aultman Taylor 30-60; 1912 16HP Baker Steam Engine; 1919 50 HP Case Steam Engine; 1912 80 HP Case Steam Engine; 1921 Illinois 20 HP Tractor Engine; 1919 Waterloo Boy 12-25 Model N; 1919 Townsend 15-30 Oil Tractor; 1924 Huber Super 4; Happy Farmer 12-24 Model F; International 10-20 Titan; 1928 AC 20-35; 1925 John Deere Spoker D; 1937 John Deere Model 62; 1938 John Deere A0 Streamlined; Porsche Junior Diesel; 1957 Porsche Junior 108 Diesel; Long Model A; 1959 Guldner A2K Spessart; 1959 Deutz D15N; 1954 Cockshutt 30 Industrial w/ Factory Air-Compressor; 1957 Cockshutt Golden Arrow; CAT 28; Frick Circular Saw Mill; John Deere No. 4 bell; Case Old Abe Cast Iron Dealership Eagle; the **Brian Bricker IH Collection** includes: '66 IH 1206 Turbo NF, '70 IH 1456, IH 1066 Pulling Tractor, '76 IH 1066 Black Stripe, '70 IH 1026, '67 IH 856 Turbo NF, '71 IH 826, '72 IH 656, '66 IH 806, '66 IH 706, '84 IH 584, and 2- IH Cub Cadet Pulling Lawn Tractors; '64 JD 3020 Diesel PS; JD 4620; Oliver 1655 Diesel; '73 Oliver 2255 FWA; '69 IH 856; '73 IH 1066; '74 IH 1568; '64 AC D-21 Series 1; '76 Ford 9600; Oliver 550; 2- JD R; and many more! **Consignments being added daily!**

The John Nikodym Early Automobile Collection with 22 automobiles including: 13 Vellie Cars and just one of two Vellie 3.5 ton trucks known, 1900 Milwaukee Steam Car, 1903 Stearns, 1906 Moline, original preservation class 1913 Buick Model 31, 1909 Midland Model F, 2 Moline-Knights and more.

Outstanding selection of vintage and antique trucks including: 1950 Kenworth CCB25C; '56 IH R200; '55 IH R160 Bull-nose; '46 White WB-22; '56 Fargo Restore Custom Ramp Truck; '56 Chevrolet 6100 Dump; '23 Graham Brothers 1.5 ton; fully restored '25 White model 15 Express Delivery; and many more!



Col. Conrad Kraft - AU01023657
Jonathan Kraft - AU1050173
Connor Wolfe - AU12300004
Tractor Consignment Manager:
Adam Floyd 219-242-5685
Farm Toy and Memorabilia Manager:
Connor Wolfe 219-973-9240
219-973-9240

Online Auction Terms: Credit card on file will be run for payment. 15.4% buyer's premium. 7% Indiana sales tax on all lots retrieved from our facility. Everything sold as is.
Live Auction Terms: Cash, all major forms of credit cards, or good check with letter of credit. 3% service fee for credit cards. 7% Indiana sales tax. 5% buyer's premium for tractor lots and 10% buyer's premium on truck and memorabilia lots, with an additional 2% buyer's premium for online, phone or absentee purchases. Register with a positive ID. Settlement the day of the sale. Not responsible for accidents or items after being sold. Information announced on the day of sale takes precedence over printed material.



Shipshewana Auction

ANTIQUUE & MISCELLANEOUS AUCTION

Every Wednesday, Year-Round at 9:00 am EST



The items above will sell in our November 13th Misc. & Antique Auction

Preview consignments at AuctionZip.com! Auctioneer ID #1945

We have seller space available. Call (260) 768-4129 to consign items!

www.ShipshewanaTradingPlace.com • (260) 768-4129 • 345 S Van Buren St, Shipshewana, IN 46565

BELINC ESTATE AUCTION THURSDAY, NOVEMBER 14TH @ 10 AM

LOCATION: 10685 S. GRAFTON RD. CARLETON, MI **ZONE 6**

1978 Ford F600 Stake Dump Truck w/ 93,036 Miles * 1986 Chevy Custom Deluxe 30 Dump Truck w/ 76,205 Miles * 1999 Dodge Ram 1500 SLT Laramie 4x4 Pickup Truck * 2000 Chevy Silverado 1500 4x4 Pickup Truck w/ 251,563 Miles * Several Trailers incl. Utility & Flat Deck Equipment Trailers * Shop Equipment incl. 20 Ton Hydraulic Press, Drill Press, Torch Sets, Tool Boxes, Generator, etc. * 3pt. & Heavy Equipment incl. Large Hydraulic Custom Wood Splitting System, Mowing Deck, Rhino BX66 Box Scraper, etc. * Firearms * Hand and Yard Tools * Boat Motors * Sewing Machines * Scrap Metal * Logs * Storage Tanks * Work Benches * & Much More!



Braun & Helmer Auction Service
 Questions? Call David Helmer (734) 368-1733
 www.BraunandHelmer.com

PUBLIC AUCTION

OF TRACTORS, TILLAGE, PLANTING, HARVESTING EQUIPMENT, SEMI TRACTOR & TRAILER, LP TANKS, SHOP EQUIPMENT & TOOLS

Auction to be held at 1395 W 800 S, Wolcottville, IN 46795

4 1/4 miles west of Wolcottville on 800 S (south Lagrange County line road) to the auction site. Watch for "Auction Today" signs. Plenty of off-road parking.

Saturday, November 23, 2024 • 9:30 A.M.

TRACTORS • TILLAGE • PLANTING • WAGONS • AUGERS • SEMI/TRAILER



4-210 White Field Boss tractor - 4 wheel drive articulating tractor with quad duals & quick hitch; 2-155 White tractor with rear duals & quick hitch; Oliver 1850 with cab, duals & quick hitch; Ford 641 LP tractor converted to gas w/loader; tractor tires & wheels; Hinkler 1224 field cultivator; Ford 24' field disk; 5-tine 12' Unverferth Zone-Builder Ripper; John Deere 7000 Planter (16 row-30") w/John Deere 7000 planter control; Sensor-1 Population Planter/Drill Monitor 16 Row; John Deere 1570 planter w/loader auger (11 row-15"); 6 row 30" planter w/Unverferth filler auger; John Deere pull-type field sprayer w/65' boom w/Raven 440 control; Killbros Gravity wagon; gravity wagon; Ford 8000 tandem axle grain truck with hoist (needs engine work); wooden box grain wagon with hoist; 8" Westfield 60' auger w/unloading swing auger; 1984 Kenworth semi tractor; East grain trailer w/tarp; orchard mister/sprayer; New Idea PTO spreader; 9' 3 pt. disc; 66" 3 pt. Befco tiller; elevator & auger frames; Lg. snow blade; hydraulic-driven barbed wire roller (in & out); approx. 60 rolls of used barbed wire; Honda FourTrax 250 4-wheeler; Centerline 220 GPS System w/mount & antenna;

LP TANKS • SHOP EQUIPMENT & TOOLS

500 gal. & 1000 gal. LP tanks; Sanborn 80 gal. upright air compressor; acetylene torch set w/cart; cardboard/hops baler; 39" x 39" electronic platform scales; Coleman Powermate 2200PSI pressure washer; Speeco Splitmaster 3 pt. log splitter; 3 pt. post hole digger; (2) scuff-folding sections; Walker Turner floor model drill press; bench-style drill press; bench grinder; floor fan; 40' aluminum ext. ladder; 6' step ladder; 2-wheel hand cart; 250 gal. fuel oil tanks; barn scales; wheelbarrow; push mower; gas cans; 20 lb. LP tanks; garden seeder; pile of cedar poles/logs; chain hoist; chain binders; (2) fertilizer pumps; 36" pipe wrench; bolt bins; bolt cutter; tap & die set; lots of hand tools; drill bits; socket sets; handyman jack; post hole digger; shovels; scrap wire; lots of scrap steel & lots more.

Auctioneer's Note: For more photos of this auction, see auction posting on auctionzip.com the week of the auction.

PHILLIP C. WOLF, OWNER

TERMS: Cash, good check, or credit card w/5% fee added.
 Funds over \$2,500.00 to be Cash, Credit Card or wire transfer unless approved by auction company.
 Food Available

Not Responsible for Accidents
 Announcements made at the auction takes precedence over printed matter.

Auction Conducted By: **LEWIS & LAMBRIGHT, INC.**
 #AC30200031
 260-463-2013 • Website: lewisandlambright.com
 ELVIE J. FREY, SR. #AU01042445 • 260-463-1396
 LAMAR BONTRAGER #AU11100084

Carole Follett LIVE ON-SITE PUBLIC AUCTION THURSDAY, NOVEMBER 14TH @ 10:00AM

INSPECTION: Weds., Nov. 13 4PM-5PM • 2 Rings @ 10AM Guns & Autos @ 11AM

LOCATION: 12850 PENNINGTON AVE.

DIRECTIONS: : 3 miles West of Cedar Springs on 17 Mile Rd. to Algoma Ave., South 1 1/2 miles to Indian Lakes Rd., West 1 mile. OR take US-131 North of Grand Rapids 14 miles or South of Big Rapids 38 miles to the Greenville/M-57/14 mile road exit # 101 West 3 miles to Pennington Ave, North 1 1/2 miles.

CEDAR SPRINGS, MI 49319 (Kent Co.) **ZONE 4**



Carole Follett, due to the death of her husband and with future plans of moving out of state will sell much, overview includes:

AUTO, TRUCK & WORKHORSE: 2004 Subaru Outback H6-3.0 AWD sedan 128K miles; 2007 Ford F-150 XLT Triton crew cab 6' bed 223K miles; EZ-GO Workhorse 3-wheel 18hp w/power dump box **TRAILERS:** 2007 Haulmark 5'9"X10' single axle cargo trailer; 5'X10' single axle utility trailer **CARPORIT:** 25' wide X 18' long X 13' high metal carport **GUNS:** Win 1892 25-20 lever; Marlin 60 .22 auto; Rem 1100 .410 auto; Stevens 54-B .410 bolt; Springfield 67 12ga pump; SKS 7.62X39 auto; Ruger Security Six .357 Mag revolver; Dickson Cheyenne .22 dbl action revolver; Kel-Tec P3AT .380 auto pistol; plus more; Ammo; Horizontal 2-gun wall mount gun cabinet; Homake gun metal locking gun cabinet; Jack & hunting knives; Rhino crossbow; Hunting & fishing gear **SHOP & LAWN ITEMS:** Cub Cadet RZT 42" zero-turn mower; Bolens garden tractor w/front snowplow; Powerland 6500 LP generator; Acetylene torch set; Farm Hand 115v flux core wire feed welder; Workshop full of Power & hand tools; Woodworking tools; Garden tractor engines, parts & tires; Scrap iron & wire **ANTIQUES:** Dale Earnhardt memorabilia; Coke collectibles; Brass & copper items; Mantle clocks; Lanterns; 1907 Kent County plat map book; Carpenters tool chest; other Collectibles & Farm Primitives; Plus household items & more



Visit www.artsmithauctioneers.com or Call Noah Smith for flyer 616-633-4254

eXpect
 eXperience,
 eXcellence,
 eXcitement and
 eXpertise at
 The Auction EXchange



MICHAEL AUCTION & REALTY SERVICE LLC

LIVE AND ONLINE REAL ESTATE AUCTION
 November 21st 3 pm

3 Bedroom Ranch with a 2-car garage
 3.5 acres with a pole barn
 11780 S Stoney Creek Rd. Carleton, Mi.481173



OPEN HOUSE NOV 11th 2 pm-6 pm

Don't miss out on the beautiful 3-bedroom home sitting on a picturesque 3.5 acres. 2-car attached garage and a Pole barn. Great starter or retirement home. Handicap Accessible

The successful bidder is required to enter into & sign a purchase agreement and pay a \$10,000 non-refundable earnest money deposit. THIS IS A NON-CONTINGENT AUCTION, NOT SUBJECT TO INSPECTIONS, APPRAISALS, OR FINANCING. ADEQUATE TIME IS PROVIDED BEFORE THE AUCTION FOR BUYER(S) TO DO THEIR DUE DILIGENCE. 9% Buyer's premiums online or save 2% for in-person bidding.

We're offering a co-op with other realtors because you're worth it, call for details!
 Call John at 517-398-1855 or Sid at 517-437-7387 For more information.

www.michaelauctions.biz



With the best coverage around, how can you afford *not* to advertise?

The Auction Exchange & Collectors News

Chuck Cryderman & Associates LLC
Gary M. Berry - Auctioneers
Auctioneers-Certified Appraisers-Realtors



PUBLIC ON-LINE AUCTION HURON-CLINTON METROPARKS ANNUAL SUPPLUS AUCTION

Saturday November 16, 2024 8 AM to 4 PM

KENSINGTON METRO PARK

2240 West Buno Rd., Milford, MI.



Approximately 120 Golf Carts, Vehicles, Pickups, Garbage Trucks, Bucket Truck, Loader, Gators, Lawn Maintenance Equipment, Trailers, Chainsaws.



CRYDERMANAUCTIONS.COM GARYMBERRY.COM 586-784-8890 248-299-5959

INSPECTION: FRIDAY NOVEMBER 15, 2024 9 AM TO 4 PM and SALE DAY 9 AM TO 1 PM

STANTON'S DECEMBER FIREARM AUCTION

FRIDAY MORNING, DECEMBER 13TH @ 8:00 AM

LOCATION: BARRY COUNTY EXPO CENTER, 1350 N. M-37 HIGHWAY

HASTINGS, MICHIGAN 49058 **ZONE 4**



NOW accepting consignments, collections, and estate accumulations of modern and antique long and handguns of all types. Whether you have one piece, or an entire collection, feel free to contact us. Our recent gun sales have generated over \$2,500,000.00 selling to full-house crowds who have attended from all over Michigan, as well as adjoining states and offsite participation. **The time of the year, and the approaching hunting season, has always stimulated a great deal of additional activity and participation in these sales.** Stanton's offer free pickups available for collections throughout Michigan, adjoining states and around the country.

Please note a 10% buyer's premium will be charged on all items sold.

Ph. 517-726-0181
Fax 517-726-0060
e-mail: stantonsauctions@sbcglobal.net
www.stantons-auctions.com
Selling all types of personal property and real estate at auction anywhere.
Call for a no-obligation consultation to discuss your personal situation.

STANLEY BAXTER LIVING ESTATE AUCTION SALE NO. 2

SATURDAY MORNING, NOVEMBER 16 @ 9:30 AM

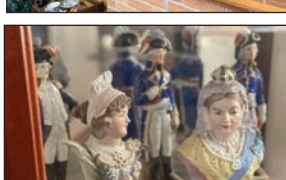
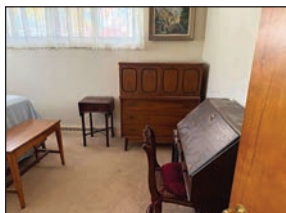
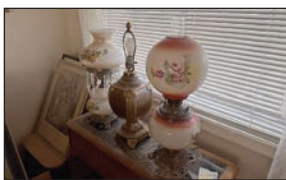
LOCATION: 1011 E. COLONIAL PARK DR.

GRAND LEDGE, MICHIGAN **ZONE 5**

This Sale #2 of the Stanley Living Estate. There are hundreds, if not thousands, of antiques, collectibles, glassware, advertising, furniture, clocks, and lamps. A very nice group artwork including oil paintings, excellent Bent Panel Filagree Overlay Table Lamp, Jadeite, Fenton Glass, Wedgwood, Victorian Art Glass, Butter churn, pickle casters, crocks, barber bottles, Transferware, Pottery, Christmas, quilts, statuary, home furnishings, china, collectibles and primitives and so much more. *Stan collected, studied, and dealt in antiques for over 50 years.

10% buyer's premium charged on all items sold.

Ph. 517-726-0181
Fax 517-726-0060
e-mail: stantonsauctions@sbcglobal.net
www.stantons-auctions.com
Selling all types of personal property and real estate at auction anywhere.
Call for a no-obligation consultation to discuss your personal situation.



STANTON'S FALL MUSIC MACHINE AUCTION

THURSDAY NOV. 21 @ 12 NOON,
FRI. & SAT., NOV. 22, & 23 @ 9 A.M. EACH DAY

LOCATION: BARRY CO. FAIRGROUNDS, 1350 N. M-37 HWY.

HASTINGS, MICHIGAN **ZONE 4**

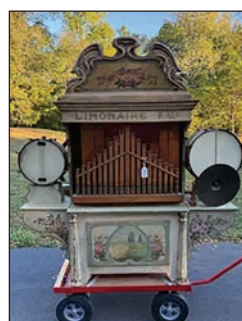
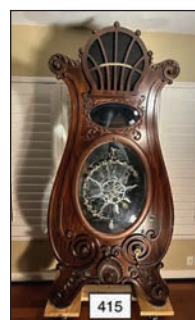


We have already received a fantastic private collection of music boxes coming with nearly 20 upright disc machines, as well as table models, cylinder and interchangeable cylinder boxes, coin operated examples, 100's of phonographs, band & street organs, records and more. This will be a remarkable event.

If you have questions call Steven E. Stanton, 517-331-8150, Email - stevenestanton@gmail.com to discuss your items and collections.



Ph. 517-726-0181
Fax 517-726-0060
e-mail: stantonsauctions@sbcglobal.net
www.stantons-auctions.com
Selling over 9,500 auctions of all types since our founding 70 years ago in 1954. We have always strived to supply the highest quality of service, at reasonable rates, as we continue to sell all types of property.



AUCTIONEERS DIRECTORY

THE AUCTION EXCHANGE And COLLECTORS NEWS[®] ANTIQUES • COLLECTIBLES • ESTATES • FARM • REAL ESTATE • COMMERCIAL

AUCTIONEERS, WE HAVE AMPLE SPACE AVAILABLE
IN THE AUCTIONEERS DIRECTORY . . .

CALL 888-339-3795

STANTON'S
Auctioneers & Realtors
of Service

144 S. Main Street, P.O. Box 146
Vermontville, MI 49096
Ph. 517-726-0181 • Fax 517-726-0060
e-mail: stantonsauctions@sbcglobal.net
www.stantons-auctions.com

Selling real estate and all types of property, at auction, anywhere

BOS AUCTIONS & APPRAISAL SERVICES LLC
(517) 784-2177

Direct: (517) 206-6494 or
e-mail Tim@TimothyBos.com

Jackson Antique Mall Inc. (517) 784-3333
Lafere Realty (517) 750-3933

WWW.TIMOTHYBOS.COM
"The Complete Package"

Art Smith AUCTIONEERS
"The Sound That Sells"

Farm Equipment Land, Antique Estate & Benefit Auction Specialists
Certified & Bonded
Personalized Service with Art or Noah

Art Smith @ 616-696-2598
Noah Smith @ 616-633-4254

www.artsmithauctioneers.com
43 years in business - SCI & NRA Member

517-243-9090

GLEN RAIRIGH

AMERICANA AUCTIONS

Visit our website at
AmericanaAuctions.com

Mel White
Auctioneer ♦ Appraiser

Okemos, MI
517-394-3006
melwhiteauctioneer.com

Braun & Helmer Auction Service, Inc.

Ann Arbor
(734) 368-1736
(734) 368-1733

A full service auction company since 1971

www.braunandhelmer.com

MIEDEMA AUCTIONEERING, INC.
LIVE AUCTIONS

MIEDEMA AUCTIONEERING & APPRAISALS, INC.

Conducting Equipment and Real Estate Auctions Since 1984!

Call us today!
1-800-527-8243
www.1800lastbid.com

601 Gordon Industrial Ct.,
Byron Center, MI

EPIC AUCTIONS & ESTATE SALES

Bob Howe & Brad Stoecker,
Auctioneer

EpicAuctionsAndEstateSales.com
or 517-927-5028

Schmidt's Antiques Inc. Since 1911

Auctioneers
Appraisers
Fine Antiques

We are currently accepting for auction:
Paintings and Fine Art
Sterling Silver
Fine Furniture
Art Glass and Art Pottery
Clocks and Watches
Decorative Arts
Chinese and Asian Art
Americana, Antique Firearms
Vintage Automobiles
Specialized Collections

5138 West Michigan Avenue, Ypsilanti, Michigan 48197 (734) 434-2660
www.SchmidtsAntiques.com
Call Us Toll Free At 855 MI AUCTIONS

"ORIGINAL" GLASSMAN AUCTION SERVICE
Since 1950

P.O. Box 315 * 6815 E. Main St.
Eau Claire, MI 49111
John Glassman (269) 757-3315
www.glassmanauctions.com
1-888-996-8243

KEN FRECKER AUCTIONEERS, INC.

620 West Lincoln Hwy.
New Haven, IN 46774
(260) 748-7744
Hillside Office:
(517) 437-2424

www.freckerauction.com
freckerauction@comcast.net

GoTo Auction

Be A Better Bidder.
Discover Great Auctions Near You.

www.GoToAuction.com

BIDNOW
ONLINE AUCTIONS

SELLING LAND & EQUIP. STATEWIDE

989.823.8835 • INFO@BIDNOW.US
WWW.BIDNOW.US
ALBRECHT AUCTION SERVICE, LLC

GOLDEN GAVEL AUCTIONS AND APPRAISALS

Buyers of Antiques & Collectibles
One piece or whole estates.
Collections of all kinds.

248-240-1886

We don't sell items, we auction memories

ALWAYS LOOKING FOR QUALITY CONSIGNORS

FURLO AUCTION SERVICE
National Award Winning Auctioneer

Website:
www.furloauction.com

MIDLAND, MICHIGAN
1-800-673-8756

"Planning An Auction?"
ESTATE • ANTIQUE • HOUSEHOLD • FARM • INDUSTRIAL

Let Us Help Plan Your Auction

J.R.T. THUMB AUCTIONEERS & REALTY
FT. GRATIOT, MICHIGAN
(810) 395-9000

JOHN TOMASCHKO
AUCTIONEER/REALTOR
cell (810) 650-2730

For Complete & Professional Auction Service
jrthumbauctioneers.com
jrthumbauctions@hotmail.com
3380 Keewahdin Rd.
Ft. Gratiot, MI 48059

Ken Lindsay's AMERICAN EAGLE AUCTION & APPRAISAL COMPANY
Auctions. Where everyone wins.

GO WITH A CHAMPION!
Over 30 State & National Marketing & Advertising Awards Champion Including 'Michigan Auction of the Year'

Real Estate * Personal Property *
Restaurant & Business Liquidations *
Antiques & Collectibles *
Sports Memorabilia * Autographs *
Large Project Specialist
Certified Asset Appraiser

www.MichiganAuctionCompany.com
(734)223-3277
Kenny Lindsay, CAI

Need an... Auctioneer Appraiser

DAVID A. CLARK AUCTION SERVICES
David A. Clark, Owner/Auctioneer
MAA Member
Professional Auctioneer and Appraisers
20+ years of Auction Experience Ranging from: All Livestock, Farms, Farm Equipment, Construction Equipment, Glassware, Antiques, Household, Estates and more

Visit us on the web at
www.davidclarkauction.com
Call: 810-441-6191

KJ's NEEDFUL THINGS
needfulthings.hibid.com
EST. 2019

Weekly Online Auctions
Needfulthings.hibid.com
(248) 505-5985
Email: auctions@kjsneedfulthings.com
Proud member of the Michigan Auctioneers Association.

ROLLO A. JUCKETTE, Auctioneer

2019 Wells Road
Dundee, MI 48131
(734) 529-2388

Rosema Auction Services LLC
"At Your Biddin' Call"

Jared Rosema
(231) 903-5455
jaredrosema@yahoo.com

4896 Ottogan St.
Holland, MI 49423

BEYER AUCTION SERVICE
Nick Beyer
Auctioneer & Realtor

8016 E. Garfield Road
Hesperia, MI 49421
Tel.: 231-854-1187
Toll Free: 877-306-SOLD

www.beyerauction.com
beyerauction@hughes.net

Peddler's Village Auction
Leroy Graber & Associates
2909 Peddler Village, Goshen, IN 46526
Phone: 574-875-3233 Fax: 574-875-5996
Website: peddlersvillageauction.com

REAL ESTATE - PERSONAL PROPERTIES
ESTATES - ANTIQUES - LIQUIDATIONS
BANKRUPTCIES - AUTOMOBILES - ETC.

"YOUR AUCTION OR OURS"
"BY THE COMPANY WHO CARES"

LOCALLY OWNED & OPERATED SINCE 1972!
LARGE INDOOR 1300 SQ. FT. BUILDING

Larry Graber AU01043954 WE ALSO OFFER APPRAISAL SERVICE Dee Graber Office Mgr.

Visit www.polleyequipment.com Today!

Call or Text: 765.737.0744
Email: polleyequipment@gmail.com

Retiring Soon
Or
Online Auctions That Get Results!

Just a Few Pieces
We Have the Sale for You!

Contact Us Today For
No Obligation Advice!!

AuctionTime.com
Equipmentfacts

POLLEY EQUIPMENT SALES & ONLINE AUCTIONS

MONTGOMERY'S
RJMAUCTIONS.COM

Industrial/Commercial Specialists

734-459-2323

info@rjmauctions.com

MICHAEL AUCTION & REALTY SERVICE
THE COMPLETE AUCTION, REAL ESTATE & APPRAISAL SERVICE



SIDNEY (SID) MICHAEL JOHN MICHAEL
65 HILLSDALE ST. 3RD GENERATION
HILLSDALE, MI 49242 AUCTIONEER/REALTOR
FAX: 517-437-7388 COLDWATER 517-398-1855
www.michaelauctions.biz
Licensed in State of Indiana

KENDALL TOBIAS AUCTIONEER
Hastings, MI
(269) 945-5016

Narhi Auctions.com



Auctioneers | Real Estate Broker & Sales | Appraisals
info@narhiauctions.com 810.266.6474
"Auction Service Beyond the Call"

MONTGOMERY'S

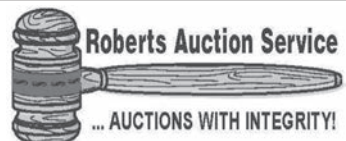


Williams & Lipton COMPANY

Industrial Specialists

www.williamsandlipton.com

248-478-2000 | auctions@williamandlipton.com



Bob A. Roberts

Certified Appraiser, Real Estate, Estates, Antiques, Collectibles

517-927-6355

www.robertsauctionservice.com



Real Estate & Auctions

121 N. Main St., Ste. 100
Bellevue, MI 49021
(269) 763-8484 Phone
(269) 763-9495 Fax
www.spauldingassociates.net



CHARLES M. BURNS

Auctioneer & Certified Appraiser
Monroe, MI

AUCTION—the SOUND that SELLS and SELLING is OUR BUSINESS!

Licensed - State of Ohio
Auctioneers Association



(734) 384-1560

charlesburns@comcast.net

Montgomery's

MAXBID.COM

Quality Consignment Auctions

734-459-2323

info@maxbid.com



Lynnae Osborne's Midland Bid Junkies

Full Service Auction Company
Online & Live Auctions
Cleanouts & Buyouts
989-600-6008

www.midlandbidjunkies.com

Member of the Michigan Auctioneers Association.
Over a decade of experience serving Mid-Michigan.

MONTRIE Auction & Estate Service LLC



Buying & Selling

One item to the entire estate

Call (419) 283-6966

Jade Montrie, Auctioneer

Residential & Commercial Real Estate *
Antiques * Collectibles * Estates * Liquidations
www.ToledoAuctioneer.com

MERRITT Auction Service

Greenville, MI
(616) 754-9437

E-mail:

merrittauctions@sbcglobal.net
www.merrittauctionservice.com

Doug Merritt & Tim Tobey, GPPA
Auctioneers & Certified Appraisers

We Also Rent Tents, Tables & Chairs

ROD BUTLER AUCTION SERVICE

Rod Butler, Auctioneer

Saginaw, MI 48638
(989) 799-4181

www.rodbutler.com

E-mail:

butlerauction@chartermi.net



Joe Carli Professional Auction Service

Plymouth, MI 48170

Phone (734) 451-7444 • Fax (734) 451-0704

E-mail: jegaveltravel.org@aol.com

www.jcauctionservices.com

"Have Gavel Will Travel"

Full Service Auction Firm
Est. 1988



"Auction Action to Your Satisfaction"



RD TILLER Auctioneers, LLC

Member NAA, MSAA, CAGA

Phone (616) 437-9104
Fax (208) 379-2296

E-mail: roger@rogermillier.com
Home Page: www.rogermillier.com

ROGERS AUCTION SERVICES

"Serving Michigan Since 1991"

AUCTIONEERS • PERSONAL PROPERTY APPRAISERS

FARM • REAL ESTATE • ESTATES

BUSINESS LIQUIDATIONS

MANUFACTURING EQUIPMENT

Cell: (810) 223-4666

Corunna, MI



JOHN ROGERS
Auctioneer



Michigan's online source for Michigan Auctions

www.FindMichiganAuctions.com

Browse Over 500 Michigan Auctions

DAN COVILLE, AUCTIONEER

COVILLE & CO.

COLDWATER, MI

517-238-5010

CELL: 517-227-1379

Licensed in Indiana & Ohio



YODER BROTHERS AUCTIONS & Appraisals

Award Winning Auctioneers

Leroy & Willis Yoder

9484 S. Rogers Ave., Clare, MI 48617

989-386-9082

fax 989-386-2036

Willis V.M. 1-800-478-1046

CAMPELL'S AUCTION

5089 DIXIE HWY., WATERFORD, MI 48329
(248) 673-7120

One Item or Complete Estate Liquidators

auctionzip.com ID # 12801

Please visit our eBay store site ID # bigauctionnut



Auctions of all Varieties

Bruce D. Snyder Auctioneer

240 W. Chicago Allen, MI

(517) 849-7059

JM Auction Service, LLC

Specializing in Business Liquidation
Antiques, Estates, Farm Equipment,
Real Estate & Coin Auction

5124 North Adrian Hwy., Adrian, MI 49221
517-266-4655

Jim Tomaszewski,
Professional Auctioneer



Serving MI & OH
Licensed & Bonded
in favor of
State of Ohio

- Estates & Collections
- Farm Machinery
- Construction Equipment
- Real Estate
- Livestock
- Business Liquidations
- Recreational Vehicles



Auctioneers • Appraisers • REALTORS®
SheridanAuctionService.com
(517) 676-9800



Auction Service

Farm - Heavy Equipment - Business Liquidation - Antiques - Etc.

Scott Vander Kolk Jr., CES
Dorr, MI

616-437-1047

www.goldengavel.net



"The Auction People"

Mel LeMar
Founder

Melody Rae Canfield
Auctioneer

517-521-4934

Stockbridge, MI

The 1st Mother & Daughter
Auction Team in the Nation.

Someone Is Looking For An Auctioneer Right Now!

Make Sure You're Found Right Here

Call Lorri At 888-339-3795 Ext 134



Archer

FROM PAGE 1

the Archer Space Port for Archer Plastics. It included a control tower with an antenna and radar dish that gave the Space Port its other worldly appearance. The Space Port came complete with a space rocket, a space car, and a handful of space men. All of the accessory pieces were made of molded plastic.

Genin introduced Archer Space Port, which cost \$2.39 in 1952, as a play set space station that did not have any television or movie tie-ins. Genin wanted his Space Port to take children's minds where none had gone before, inviting boys and girls to use their imagination and bring space into their home's front room.

Archer Space Port's original box challenged space cadets by stating, "All parts easily assembled by the junior space-man mechanic." Each Archer Space Port had a flat roof that doubled as a landing strip for plastic toy spaceships. There was also ample room on the roof for children to pose plastic spacemen and spacewomen who accompanied the Space Port on its journey through space.



Above: Rare, Archer Spaceman "Ranger" with original helmet that is valued at \$25.

By today's standards, Archer's spacemen were posed awkwardly, were coarsely molded, and had few rewarding details, but they were visually appealing, especially to children.

Archer spacemen were "Made in the USA" at a time when toy companies were all headed to Japan for production. These spacemen wore molded, detailed space suits, reflecting American's vision of space in the 1950s.

One unique feature of Archer spacemen is that many of these other worldly men wore space helmets, which looked "cool" then and still look "cool" in collections today. Expect to pay more for an Archer spaceman with original space helmet.



Above: Nice set of three Archer hard plastic Spacemen, with helmets, and one Archer Spacewoman. This set was offered on eBay for \$35.



Above: A complete Archer Space Port play set that sold at auction in 2016 for \$1,560.



Above: Two Archer Ajax hard plastic Spacemen, circa 1950s, with original helmets. These Spacemen are valued at \$20.



Above: This Archer Space People set, circa 1955, has 11 space people and the original box. It is valued at \$250.



Above: Light blue Archer Spaceman, circa 1956 with all original accessories, including deadly ray gun. This Spaceman is valued at \$25.

FLEA MARKETS • ANTIQUES
EDUCATION • WANTED
COLLECTIBLES • SERVICES
ANTIQUES SHOPS • SHOWS

CLASSIFIEDS

FLEA MARKETS • ANTIQUES
EDUCATION • WANTED
COLLECTIBLES • SERVICES
ANTIQUES SHOPS • SHOWS

SERVICES

MIRROR RESILVERING: Quick Service. 313-521-1888. Frank Wright Glass, 14808 Gratiot, Detroit, MI 48205. Call for quotes. www.frankwrightglass.net

WANTED

WANTED: Always buying rare antique motors. Outboard and inboard also early race boats. E-mail: bjoutboards@gmail.com 989-326-0727 B.J. Pawlaczyk

VENDORS

Free booth space available @ our annual antique advertising specialty show March 15, 2025. Located at the Indiana State Fairgrounds, Indianapolis. This is one of the largest markets for only 40+ year old advertising in the world. Signs, displays, clocks, and all other forms of vintage advertising.

For info: IAAshow.com
Contact: damongranger@gmail.com

With the best coverage around, how can you afford *not* to advertise?

The Auction Exchange & Collectors News

ADVERTISERS!

Verify that your ad was received! Whether you faxed or e-mailed, call toll-free for verification:

888-339-3795

Since 1978 the Weekly Auction & Collectors Guide for Michigan, N. Indiana and N.W. Ohio

Denotter Auctions

Weekly Online
Estate and Consignment Auctions
Antiques, Collectibles, Vintage
www.denotterauctions.com
224-392-3101



Buying? Selling? Promoting?

TRY AN AUCTION EXCHANGE CLASSIFIED!

Classified ads are limited to Antique Shows & Shops, For Sale, Services, Education and Want Ads. • No auction ads or tag sales.

An Auction Exchange classified ad is only \$6.25 per week for up to 15 words and 25¢ for each additional word.

Please print legibly and include name, address or phone number & town as it will appear in print.

Name _____

Street _____ City _____

State _____ Zip _____ Phone _____

CLASSIFICATION: (i.e. Wanted , For Sale) _____ Please run my ad for _____ weeks.

YOUR AD, AS IT WILL APPEAR

\$6.25

\$7.50

\$8.75

\$10.00

\$11.00

\$12.25

All classified ads must be pre-paid

Please send ad with check made payable to The Auction Exchange • PO Box 90 • Knightstown, IN 46148-0090

260-463-2828

JERRY GROGG

INC.

Auctioneering & Real Estate

402 N. Detroit Street • LaGrange, IN 46761-0067

LIVE ON-SITE PUBLIC PERSONAL PROPERTY AUCTION

SATURDAY MORNING NOV. 30, 2024 AT 9:00 AM

PROPERTY ADDRESS:
4050 E 100 N
LAGRANGE IN, 46761



OWNERS: JERRY & ANNELIESE GROGG TRUST

LOCATED 4 MILES EAST OF LAGRANGE ON US 20, TO CR 400 E, THEN NORTH ONE MILE TO CR 100 N.

- * TRACTOR, BACKHOE, UTVS * COLLECTOR TRUCK & CAR, CAR HOIST ***
*** SHOP EQUIPMENT * APPLIANCES, FURNITURE * COLLECTABLES * GUNS ***



TRACTOR - BACKHOE - UTVS: 2000 John Deere 6410 4x4 cab, power quad, RH reverser, RH door, corner exhaust, JD 640 quick tach loader, 2 remotes, 540/1000, Firestone 18.4-34 tires, 3,709 hrs; John Deere quick tach 72" brush grapple bucket; John Deere quick tach pallet forks; JD 310SG loader backhoe, power shift, 4x4, turbo, extenda hoe W/R swivel quick tach, 30" bucket, 90" front bucket, 12.5/80-18 front 19.5-24 rear 3374 hours; Kubota 1100 RTV diesel, full cab, heat and A/C, 644 hours; John Deere HPX diesel Gator, full glass, enclosed cab, 4X4, elec dump bed, heater; 2011 John Deere 997 diesel 72" zero turn mower, 955 hours; 2018 John Deere 1025 R compact tractor 4x4, hydro trans; JD 120R loader & Drive Over auto connect 60D mower deck with John Deere 20 bu. 3 pt. bagger with blower system, 189 hrs; Bush Hog Squealer SQ72 6' 3 pt. rotary mower; Buhler/Farm King 7' 3 pt rear discharge finish mower 540 pto; Lawn trailer with Fim co 50 gal. sprayer 2012 Vermeer BC 1000XL, 4 cyl diesel 1082 hours; 3 pt. King Kutter potato plow; John Deere 7' 3 pt blade; Ambusher skid steer rotary mower; Kunz AcrEase 60" pull type finish mower for ATV, B&S 23 hp engine; Ford 3 pt. post hole auger; Log splitter on wheels, Honda engine, has not been used very much; Gill Getter 712 18' aluminum pontoon with canopy and Hoosier trailer; Sears Nymph 12K 12' aluminum boat and trailer, like new; 2024 AGT Mini Excavator; 2024 EG360 Mini Track Skidsteer.

TRUCK: 2013 Dodge Laramie SLT 5.7 Hemi V8 4x4, crew cab, leather heated seats, 34,318 miles, Ram boxes.
COLLECTOR TRUCK AND CAR - CAR HOIST: 1957 Chevrolet 3200 pickup, 327 V8, 350 auto trans, digital dash, nice, older restoration, upgraded to disc brakes; 1950 Olds 88 2 door hard top Futuramic, 88,205 miles; Oldsmobile car bumpers; Oldsmobile fenders and parts; Lifts Unlimited 9000# 2 post car lift; Car tie down straps.

SHOP EQUIPMENT: Matco tool chest full of tools; Craftsman tool chest full of good tools; Gladiator metal cabinet with matching work bench and drawers; Lawson Products cabinets; Large quantity of Craftsman, Snap On and other brands; Rural King tool chest with tools; Parts washer; Metal work bench with vice; Sun Vat-33 battery tester; Anvil on stand; Grip 2 ton A frame engine hoist; Air grease pump; Oxy acetylene torch set; Milwaukee 18V 1/2" impact batteries and bag; Milwaukee 12V torque drill/driver; DeWalt 20V max tool set; Makita 18V tool set; Makita orbital sanders; Senco finishing nailer 25XP; Black and Decker power tool set; Roto Zip tool; Centech battery charger; Air jacks; Air tools; Air tank; Shop creeper; Electric 1/2" impact; Electric chainsaw sharpener; Craftsman air regulator and paint gun; Bolt & screw caddies; Workbench Gray truck air jack; Large assortment of rakes, shovels, hoes, forks and brooms; Niehoff tune up center metal cabinet; New 1000 watt work light; Transmission jack; John Deere A90 kerosene heater; Car ramps; Chain binders; Log chain; Pallet racking, several sections; Metal storage racks with storage drawer, 140 drawers; Ingersol Rand 5 hp 80 gal. upright air compressor; Sanborn Magna Force 3 hp air compressor.

POWER EQUIPMENT: Craftsman 26" self-propelled walk behind snowblower; Stihl M5 391 chainsaw; Stihl KM91R pruning saw; Polan 2055 chainsaw; Dolmar 420 chainsaw; Echo and Stihl weed eater; Honda 13 hp 3500 psi power washer; Alladin hot water power washer 220v; Tahoe TPI 7000 LXH diesel generator; Mantis garden tiller; Honda walk-behind mower; B & S edger; Craftsman 10" table saw; Craftsman drill press; Wissota pedestal grinder; B & D Workmate; Delta bandsaw; Sears/Craftsman planer/molder Sears/Craftsman 10" radial arm saw; Floor model drill press; Bench grinder with chainsaw sharpener; Metal bandsaw; Sears 6" jointer on stand; Several plastic wood and metal saw horses; Several carts and dollies; Stanley LED work light; Wheelbarrows; Pull-behind lawn thatcher; Lawn roller; Honda trash pump & hoses.

APPLIANCES: Amana side by side refrigerator; Amana electric stove Frigidaire front load washer and dryer set; Frigidaire refrigerator; Crosley washer and dryer; Frigidaire upright freezer Electrolux, Rainbow, Shark Hoover & Dirt Devil vacuum cleaners.

HOUSEHOLD - FURNITURE: Oak extension table with 4 chairs; Oak telephone stand; Queen size Intellibed Sapphire Organix; Restonic queen size mattress & box springs; Oak futon and mattress; Cloth love seat with large matching ottoman; Cherry coffee table with drawers; Oak electric fireplace (not sure this works); LG TV; Oak L shaped desk; 2 drawer filing cabinet; Sofa table; Patterned couch; 1/4 sawn oak bookcase with glass doors; Maple 4 pc. bedroom suite; Oak 3 piece bedroom suite; Rocking chairs, hickory rockers; Magazine rack; Corner cupboard/shelf; Sofa sleeper in cabin, used very little; Maroon and Blue La-Z-Boy Chairs; Maple table and 4 chairs; Pool table slate with pool sticks & balls; Plaid sofa; Matching leather loveseat and couch; Blanket chest; Cherry sofa table; 8' extension table; Fainting sofa; Floral love seat; Corner cabinet; Glider rocker; Lots of country and Christmas home décor; Large amount of kitchen utensils and pots and pans; Wood entertainment center, painted black; Oak sewing stand; Daybed with pullout drawers; Sewing boxes & large assortment of sewing supplies (not sure about this because we brought sewing stuff here); Nelco sewing machine; Hand stitched quilt; Dollies & table cloths; Janome sewing machine; Yarn and crocheting supplies; Lots of bedding.

COLLECTABLES: Dazey butter churn; Sleepy Eye Flour plate; Depression glassware; Heavy glassware; Hand painted dishes & bowls - Germany; Roseville Jordaire; Collection of 40's - 60's pictures of movie stars and musicians, i.e. Elvis, John Wayne, Marilyn Monroe, Buddy Holly, James Dean; Dresser set; Several pieces of Roseville, Hull and other pottery; Zane Grey and Gene Stratton Porter book collections; Snow sleds; Large collection of 45 records and lots are Elvis Presley; Lots of home decorations and Christmas décor; State Bank of Lima cast iron bank; Collector diecast cars; Cane bottom chair; Swivel top TV stand with claw feet; Jay B Rhoades Co. oil can, Kalamazoo, MI; Glass jar with oil spout; Fel-Pro exhaust flange gasket display rack; Iron ice cream parlor table and 4 chairs; Primitive cabinet base.

GUNS AND AMMUNITION: JC Higgins Model 30 semi auto .22 cal rifle with scope; Remington Target Master model 510 .22 cal. bolt action single shot; Harrison & Richardson model 765 Pioneer .22 cal. bolt action; Stevens Crack Shot rifle; Stevens model 940A 20 ga. single shot shotgun, youth; Double barrel muzzle loading pistol; Double barrel .410 pistol; H Henel KK Sport .22 cal. rifle, breech load; Ithaca M49 .22 cal. single shot lever action top load; Ithaca model 300 12 ga. semi auto; Ruger M77 22-250 bolt action with Bushnell Sportview scope; Stevens 12 ga. single shot; Double barrel .410 open hammer quail gun; 1939 military gun model 98 with bayonet; Assorted ammunition.

CREEKSIDE CABINS & GARDEN SHED: Creekside 11x17 with 3' porch; Creekside 10x17' 3 sided building; 11x20 garden shed; Above ground Swimming pool with pump and filter; 1000 gal. LP tank; Holland grill Companion LP gas grill, used very little, on s.s. stand; Park bench; Glider swing; 4 Craftsman stools; Several poly tables and folding chairs; Large quantity of seasoned firewood; LH golf clubs; Bug defogger; Live traps; Hammock; Garden cart; Garden tools; Lots of planters; Room air conditioner; Stamina exercise bike; Proform treadmill; Jack LaLanne situp bench; Vibra Therapy machine; Lynard weighing scale; Several rolls of Red Brand barbed wire.

AGENCY DISCLOSURE & GENERAL OFFICE POLICIES: Jerry Grogg Inc. represents the Sellers only and does not inspect merchandise or real property on bidder's behalf. All items are sold "As-is Where-is" basis. No warranty or representation, either expressed or implied, concerning personal property, or real property, or the condition of such is made by the Seller or Jerry Grogg Inc. The information contained is subject to verification by all parties relying on it. No liability for its accuracy, errors, or omissions is assumed by the Seller or Jerry Grogg Inc. Each potential bidder is responsible for conducting his or her own inspections, investigations, inquiries and due diligence concerning the property.

AUCTIONEER'S NOTE: As Jerry & Anneliese have moved from the farm to live with her daughter in Michigan, we will sell the following personal property. Please bring a friend as we will be running three rings. This will be a large auction with plenty of on-site parking. Lunch will be provided by Bloomfield Hill School.

Visit Website for detailed terms:
www.jerrygrogg.com

Clerking and Cashiering will be done by the Harley Schlabach family who has clerked all of Jerry's auctions while he was in the Auctioneering business.

REAL ESTATE AUCTION
TUES. EVENING, NOV. 26, 6:00 PM

260-463-2828

JERRY GROGG

INC.

Auctioneering & Real Estate

402 N. Detroit Street • LaGrange, IN 46761-0067

JERRY GROGG INC. OFFICE 260-463-2828
Jeff Burlingame AU19300021 260-499-1083
Steven McKowen AU10500022 260-499-1900
LaWayne Miller AU09000086 260-350-1548
Robert Mishler AU08701553 260-336-9750

ROBERT MISHLER
260-336-9750

CHECK US OUT ON FACEBOOK OR INSTAGRAM TO GET UPDATED INFORMATION ON LISTINGS OFFERED AT AUCTION AND FOR SALE ALONG WITH ANY UPCOMING PERSONAL PROPERTY AUCTIONS.