

# THE AUCTION EXCHANGE

## And COLLECTORS NEWS®

\$150

ANTIQUES • COLLECTIBLES • ESTATES • FARM • REAL ESTATE • COMMERCIAL

www.eauctionexchange.com

April 2, 2024

Vol. 47 No.17

### FEATURE

## Packard pedal car drove a \$37,000 bid at Kraft

BY KARIN MILLIMAN

VALPARAISO, Ind. — Every year the Kraft Auction Service presents their anniversary auction in a huge way. They have a unique way of celebrating with both their buyers and sellers. They spend all year searching for just the right pieces to include in this sale and it's always a humdinger. You will want to start



**Above:** Toys of the past were made to last and this Buddy L passenger bus was no exception. It brought a high bid of \$5,250.

saving your dollars now to be ready to attend their anniversary auction next year and it will be worth every sacrifice you make to be there.

This year was the 47th anniversary sale

A Star Wars pinball machine brought some

**Left:** Wilt Chamberlain's jersey would have made him proud with a selling price of \$9,000.



interest from the bidders. This Williams Star Wars episode one pinball 2000 machine appeared to be in overall good working condition. It did have some scuffs and wear from play and storage but that was to be expected. It measured about 72 inches tall by 48 inches deep and was 24 inches across. The final bid was \$3,250.

A Martian warrior was



**Above:** Professionally restored American National Packard electric powered pedal style car. The car is electric motor gear driven. It sold for \$37,000.

life-sized and very impressive. This Mars Attacks figure was motion activated. The helmet and head would glow, his

head moved back and forth, the ray gun he carried shot out blast mists and it played some pretty eerie science fiction

sounds. It was in nice condition with a bit of wear from display. It was

*See Kraft Page 4*

### FEATURE

## Chalkware lamps light up collectors

BY LARRY LEMASTERS

No one knows when plaster of Paris was invented. It was used to smooth the walls of pyramids in Egypt, and there is an interesting story told that King Henry III visited Paris in 1254 and was so impressed by the fine white plastered walls that he introduced plaster to England where it became famously known as plaster of Paris. The name "plaster of Paris" originated from the fact that natural plaster was mined from the Paris region of Montmartre.

American-made chalkware, which is made from plaster of Paris, originated in the Pennsylvania Dutch area in the early 1800s. These Dutch chalkware pieces were most often forms of decorative ware. Still, it was not until America used plaster of Paris to create chalkware figurines, roughly 1900 – 1960, for prizes at carnivals that plaster of Paris became a household name.

Chalkware, made from plaster of Paris, was extensively used to cast inexpensive decorative figurines, such as Kewpie dolls, that were given away as prizes at carnivals. These pieces quickly became known as "carnival chalk," which later took on the more generic name "chalkware."

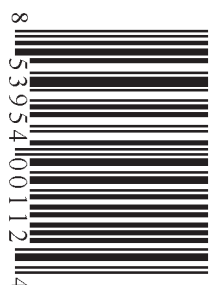
Some pieces of chalkware were hand carved from blocks of plaster, but the majority was cast while the plaster was still in liquid form. Chalkware was always painted with a water-based paint similar to fresco paintings. When painting chalkware, the

*See Lamps Page 13*

**Left:** Vintage, circa 1950s, chalkware fisherman lamp with original shade. This beautiful lamp was offered on the Internet for \$80.



**Above:** Mid-century modern, circa 1950s, dancing gypsy chalkware lamp that was offered on eBay for \$1,350.



**SINCE 1978 THE WEEKLY AUCTION & COLLECTORS GUIDE FOR THE GREAT LAKES REGION**

# SPORTING GOOD AUCTION

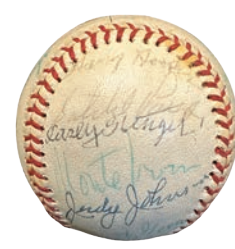
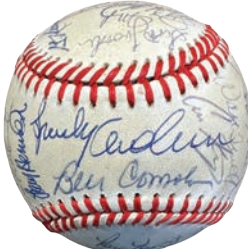
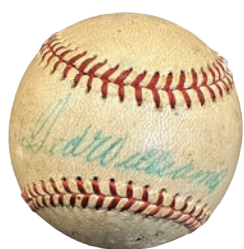
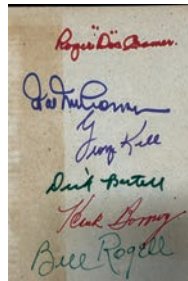
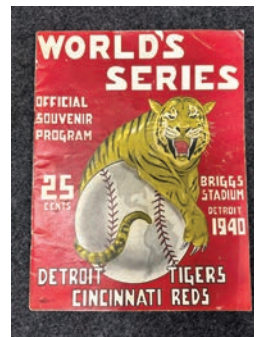
APRIL 10TH @ 10:00 AM EST

409 HUPP ST., JACKSON, MI 49201 **zone 5**

LIVE IN-PERSON & SIMULCAST EVENT - OVER 400 LOTS  
BIDDING THROUGH PROXIBID & LIVE AUCTIONEERS



SPALDING BASEBALL BAT RACK  
 A.J. REACH FLANGE SIGN  
 A.G. SPALDING & BROTHERS DSP FACTORY SIGN  
 MICKEY MANTLE GAME USED TEAM INDEX BAT  
 1931 NEW YORK YANKEES SIGNED BASEBALL W/RUTH & GEHRIG  
 SPORTS CLOTHING NEON  
 100'S SIGNED BASEBALLS, CARDS, PROGRAMS, BATS, GAMES,  
 FOOTBALLS, ADVERTISING ITEMS & MUCH MORE



AUCTION HOUSE ADDRESS: 409 HUPP ST.,

JACKSON, MI 49201

PHONES 517-796-3000 OR 810-599-6252

AUCTIONEER ID IS 54290



Jared Mark

# SEMI TRUCK & TRAILER ONLINE AUCTION

TUESDAY, APRIL 9 | MICHIGAN



- (3) 2019 Freightliner Cascadia
- 2016 Freightliner Cascadia
- 2012 Volvo VN
- 2005 Peterbilt 378
- 2005 International 8600
- 2000 Peterbilt 330 Fuel Tanker
- Freightliner MT45 Step Van
- Manac 50' 8-Axle Flatbed
- Utility 53' Reefer
- Ravens 30'6" Aluminum Flatbed
- Wabash 48' Dry Van
- Trailmobile 48' Reefer Storage
- Parts
- Tires



Plus  
Much  
More

**MIEDEMA'S REPOCAST**

VIEW ALL ITEMS IN DETAIL AND/OR BID AT REPOCAST.COM OR CALL OUR OFFICE AT 616-261-4988.

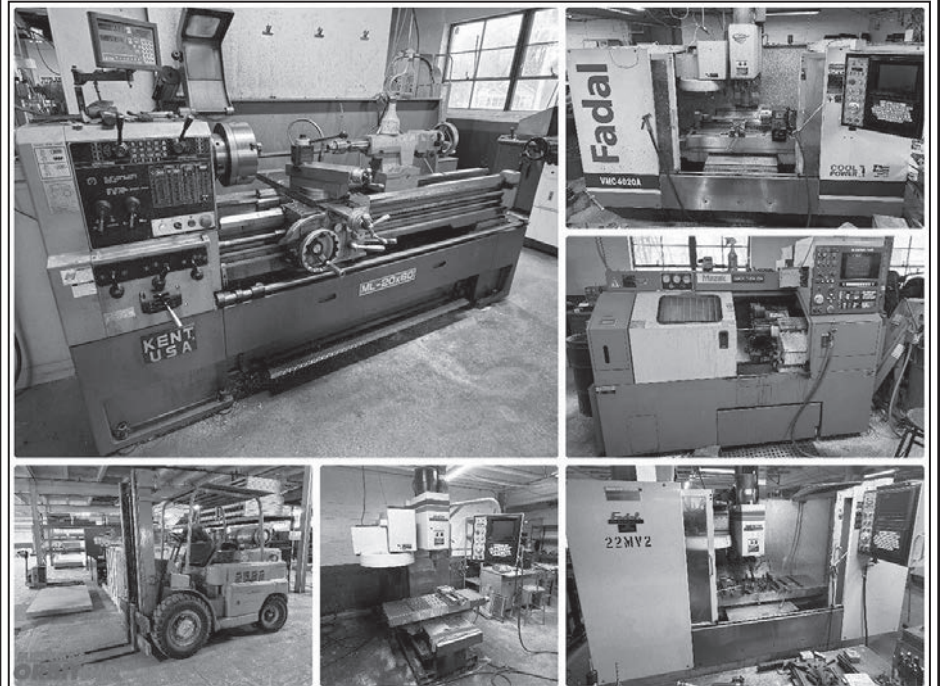
# SYMONDS MACHINE CO. ONLINE AUCTION

TUESDAY, APRIL 9 | DOWAGIAC, MI



- Kent ML-2060T lathe
- Fadal VMC 4020 CNC vertical machining center
- Fadal VMC 8030 907-1 CNC vertical machining center
- Fadal VMC 6030 904-1 CNC vertical machining center
- Mazak QT-15N CNC lathe
- Fadal VMC 10 vertical machining center
- Acer Dynamic 1760G lathe
- Fadal VMC 4020 906-1 vertical machining center
- Fadal VH65 4th axis Bridgeport
- Acer & Marena vertical mills
- Allis-Chalmers 6,000lb. forklift
- Moore No. 3 jig grinder
- Band saws
- Surface grinders
- Shears
- Compressors
- Belt sanders
- Shop equipment
- H-frame presses
- Miller and Lincoln welders
- Tooling
- Pallet racking
- Shelving
- Hand tools
- Power tools
- Work benches
- Office furnishings

Plus Much More



**MIEDEMA'S ORBITBID**

VIEW ALL ITEMS IN DETAIL AND/OR BID AT REPOCAST.COM OR CALL OUR OFFICE AT 616-261-4987.

# PERSONAL PROPERTY ONLINE AUCTION

**BIDDING OPENS THURSDAY @ 9 AM**

**Online Auction Features** - 2009 Polaris Sportsman XP ATV w/ Plow, Ford Tractor, Implements, Stihl Outdoor Equipment, Snap-On Tools, Scotts 54" Garden Tractor, Lawn Equipment, Winchester Gun Safe, Welder, Industrial Band Saw, Toolboxes, Power/Air/Hand Tools, Garage Related Items, Hardware, Plus Much More!

ITEMS LOCATED AT: EASTERN MICHIGAN FAIRGROUNDS (ENTRANCE OFF ALMONT AVE.), IMLAY CITY, MI 48444 (1½ Miles north of I-69 off M-53)

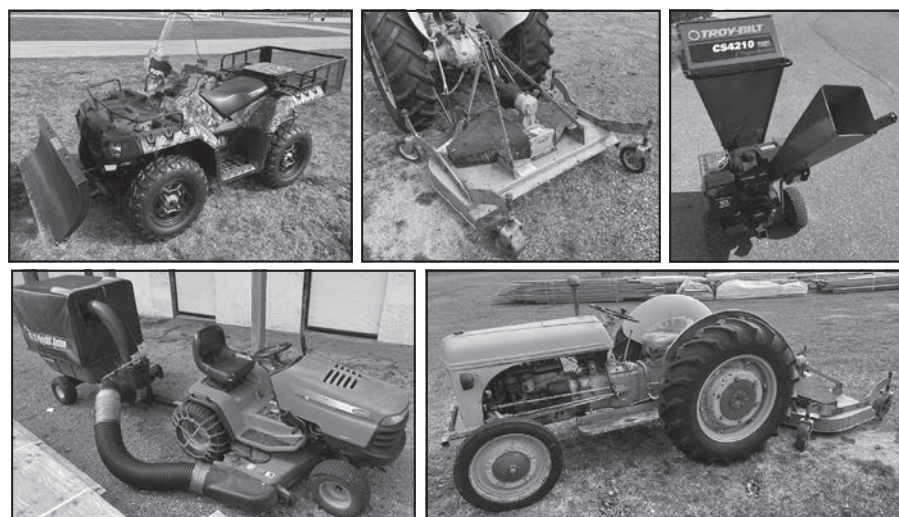


**Rowley AUCTIONS**  
810-724-4035  
www.RowleyAuctions.com

Preview: Thursday, April 11 @ 10 AM - 2 PM

**CLOSING PROCESS BEGINS THURSDAY, APRIL 11 @ 8 PM**

Visit [BidOnline.us](http://BidOnline.us) for full catalog, terms & to bid.



# APRIL ONLINE ESTATES & CONSIGNMENT AUCTION

**BIDDING IS OPEN!**

**ONLINE AUCTION FEATURES** - Aluminum Fishing Boat, Farm Signs, Advertising, Primitives, Toys, Jewelry, Coins, Furniture, Tools, Knives, Antiques & Collectibles, Fenton, Glassware & Pottery, Household, Books & Readers, Outdoor Items, Train Coin-Op Ride, Prints & Pictures, Crocks, Outboard Motors, Plus Much More!

ITEMS LOCATED AT: ROWLEY'S AUCTION SERVICE  
124 S LK PLEASANT RD., ATTICA, MI 48412  
(Just North of I-69 Exit# 163)

Preview Open Daily Monday - Friday @ 10 AM - 4 PM



**CLOSING PROCESS BEGINS WEDNESDAY, APRIL 3 STARTING @ 8 PM**

Visit [BidOnline.us](http://BidOnline.us) for full catalog, terms & to bid.

NOTE: We have our regular online auctions ending on the first Wednesday of every month. Accepting quality consignments every month on an appointment basis. Call for details.

**Rowley AUCTIONS**  
810-724-4035  
www.RowleyAuctions.com



## Kraft

FROM PAGE 1

sold with the original box, but the box had some damage. It measured about 6 feet, 4 inches in height. A pretty scary piece to greet visitors as they attempt to enter your home. It sold for \$2,500.

Keeping with the pop culture items, an X-Men comic was offered up. This original 1975 Marvel giant-size was a first issue which featured the first appearance of the characters Storm, Nightcrawler, Colossus and Thunderbird. It was also the second full appearance of Wolverine. This book was in good overall original condition with some discoloration, wear to the spine and expected other wear from age and storage. It brought a final bid price of \$2,100.

Hot wheel redlines were just the cars you bought to play with. Now they are highly sought after by collectors. A lot of 17 of these toys from the 1960s was offered for sale in the original collector's case with the matching buttons that came with them. This group of cars were in nice condition with some expected paint loss from wear and play. The collector's case was in nice condition and the bidders had to dig in their pockets to be the new owner of this group of toys. The final bid price was \$1,200.

And not to be outdone, an original Hot Wheels redline club 15th anniversary limited edition set was offered up. This sixteen piece store display set was complete with all original cars, the outer box and the shipping box. The set was in excellent condition and featured exclusive cars that were only available with this set. The production was limited to 1,500 and it took a bid of \$3,500 to be the new owner of this hard-to-find collectible.

A guitar definitely garnered its fair share of bids. A 1963 to 1964 Gibson Firebird V electric guitar was in fair condi-

tion. It had some wear and repairs, with finish loss, replaced pickups and signs of a refinished neck. And the serial numbers were missing. However, this guitar is highly sought after in any condition. It came with a case and was untested. Sold as it was, it was perfect for a restoration or great just left as it for display. The final bid of \$9,000 was no surprise on this collectible.

Michael Jordan is remembered by many. One of his signed jerseys was run across the auction block. This piece was nicely framed and came with the Upper Deck authentication. A memory from the Chicago Bulls, this jersey was signed with a silver marker. It came with a matching hologram and didn't get put away until the bid reached \$5,000.

However, there was another jersey that had the bidders clamoring to come out on top with a final bid of \$9,000. Wilt Chamberlain signed his Los Angeles Lakers jersey with a black marker and inscribed "HOF78" on it. It came with a Mounted Memories certificate of authentication dated November fifteenth, 1997. There was also a photograph of Chamberlain signing the jersey that went to the winning bidder. There was a small crack in the glass in the lower right corner which didn't affect the jersey inside at all. This one was a real treasure for the winning bidder to display and brag about.

A Buddy L passenger bus was the top seller among the toys that were auctioned off. This vintage toy was all original including the decals. The passenger door opened, giving this sought after child's toy a real collectible appeal. The bus measured about 28 inches in length and brought the bidders all the way to \$5,250.

A Turner Lincoln Sedan toy car showed to be sought after. This one was painted red overall with yellow trim so made a great display piece with details that popped with the color choice. This sedan had great patina and some expected paint loss and wear from play and age. It



Above: Even though it was a brand-new automobile, this Porsch hit top marks with the selling price of \$228,000.

measured almost twenty-seven inches long, and was a very nice original example of this toy. It took a bid of \$3,250 to be the owner of this great piece of history.

An original Tonka #206 was a trailer sales set with the original box. The set was complete with the blue step side pickup truck, tan sportsman pickup truck with matching pickup bed trailer, a blue stake trailer, a boat trailer, and a horse trailer. The set had some minor paint chips and light wear from storage. The box had some writing on one side, but this set was a nice complete set of a toy that was hard to find complete. The final sale price was \$3,750.

Adult sized vehicles were also in demand. One of the most sought after in this category was Bobby Unser's 1974 Datsun 260Z official pace car. This was a 1974 Datsun 260Z Ontario Motor Speedway pace car and was as it left the track in the spring of 1974. "The car is from the estate of racer Bobby Unser," read the auction listing. "With less than 12,000 miles on the car, it is a part of Unser racing folklore. There are 2 stories on how Bobby ended up with this awesome car. Story number one, "The printed story," is that the Ontario Motor Speedway was the Indianapolis Motor Speedway of the west, so they emulated what IMS did by giving the winner one of the pace cars. Nice G-Rated story-book ending. Story number two is that Bobby really wanted the sporty 2 door Datsun. Call it a mid-life crisis, but Bobby want-

ed this car. The story goes that Bobby had one of his crew guys hop in the 260Z for a little test drive.... all the way to Albuquerque." The final bid price to own this exciting part of race car history was an impressive \$53,500.

From the private collection of Johnny Rutherford came a 1980 Indy 500 Trans-Am pace car. In the 1980s, Johnny Rutherford ruled the Indianapolis Motor Speedway. This was the year he won his third Indianapolis 500. He received a Pontiac Turbo Trans-Am as part of his winner's prize. It had 1,100 miles on it when gift to Rutherford. He drove the car to Fort Worth which added 900 more miles on it. He did have it on display for awhile at the Pate Museum of Transportation, but this car spent most of its life in Rutherford's garage. It was painted a cameo white with black, gray and red Firebird graphics. It did have a few small dents on the left front fender and some normal chipping and wear. Rutherford owned this car for 44 years during which time it accumulated a total of 2,400 miles. It started and ran and was sold as is, noting that it needed to be serviced before it was road worthy. The final bid price on this beauty was an impressive \$80,000.

A set of garage doors from the Indianapolis 500's famed Gasoline Alley once were part of Garage numbers 86 and 84. Those garages were used by Johnny Rutherford and McLaren Racing beginning in 1973. When the garages were dismantled in 1985 Rutherford kept the doors. They sold for \$33,000.

One pedal car brought more than some of the motor cars. It was an American National Packard electric pedal style car. It was professionally restored and was electric motor gear driven. It had a rumble seat, rear luggage rack, white wall tires, removeable hood, and chrome features and was in good condition with light wear from display. It was exceptionally restored by Dave Klepsies. It brought a final bid price of \$37,000.

Racing to the top of the price scale in the car category was a Porsch. This 2023 Porsche 911 Turbo S Cabriolet had just one owner and less than 400 miles. It had a new twin turbocharged 3.7 L flat six motor with 640 horse-power. This eight-speed PDK transaxle all wheel drive had a power retractable soft top and had heated and ventilated front seats. It would blast from zero to sixty miles per hour in just 2.6 seconds and boasted a top speed of two hundred and five miles per hour. This brand-new super car was a no reserve and sold to the highest bidder with a clear title. The final bid price on this beauty was an impressive \$228,000.

Sharing the bid price of \$69,000 were two very similar vehicles. A 1969 Dodge Super Bee was an original A12 car with numbers matching transmission. The engine was lost during restoration, so it had been replaced along with the 440 six-packs. This car was originally green in color and now sported a speedy looking black color. It had the original four-speed transmission and a lift-off fiberglass hood. The seller had over \$150,000 invested in the



Above: A 15-year-old bottle of Kentucky bourbon sold for \$1,900.

fully restored car. So, the new owner really got a deal on this one.

The other one selling at \$69,000 was a 1970 Dodge Challenger. This one was an olive green in color. It was an automatic shift and featured cloth and leather seats. It had a 383 engine and a 727 transmission. It had been restored with a complete frame-up restoration and had a clear title. With only one hundred twenty miles on it since the restoration, this one was a real beauty.

A Pontiac dealership sigA bottle of Pappy Van Winkle 15-year-old Kentucky bourbon, sealed seven-hundred-fifty milliliter bottle, sold for an impressive \$1,900.

[www.kraftauctions.com](http://www.kraftauctions.com)



Above: A beautiful car from history, this 1931 Cadillac was sold for \$62,500.



Above: Providing hours of fun, this Star Wars pinball machine was sold for \$3,250.

# ORDER FORM SUBSCRIPTIONS ← SAMPLE

**THE AUCTION EXCHANGE**  
*And* **COLLECTORS NEWS®**

PO Box 90, Knightstown, IN 46148-0090  
Phone Toll Free (888) 339-3795, x134 • Fax (877) 223-3778  
info@eauctionexchange.com



Free Sample Copy of *The Auction Exchange & Collectors News*

(One free sample per address per year)

SUBSCRIPTIONS:  New Subscription  Renewal

- \$37<sup>00</sup> for 1 year (51 issues)
- \$69<sup>00</sup> for 2 years (102 issues)
- \$98<sup>00</sup> for 3 years (153 issues)

Total enclosed: \$ .....

Name .....

Address .....

City ..... State ..... Zip .....

Phone (.....) ..... Email .....



This is a gift, please send a postcard announcing the gift subscription

From .....

I read *The Auction Exchange* for:

- Auction reviews
- Articles
- Advertising
- Other

Mail this completed form with payment to: PO Box 90, Knightstown, IN 46148-0090

**CREDIT CARD ORDERS: 800-876-5133**

Tony Gregory ..... Publisher  
Lorri Egan ..... Publication Mgr./Advertising  
Connie Swaim ..... Managing Editor  
Tari True ..... Pre-press Manager

Auction Exchange and Collectors News  
Published weekly except one week in December  
(51 issues) and mailed every Thursday  
ISSN: 0279-0950  
Published by MidCountry Media, Inc.  
27 N. Jefferson St., PO Box 90  
Knightstown, IN 46148  
Periodicals postage paid at Knightstown, Indiana

Subscription price: \$37.00 for one year  
\$69.00 for two years; \$98.00 for three years

**POSTMASTER:**

Send address changes to:  
The Auction Exchange and Collectors News  
PO Box 90  
Knightstown, IN 46148-0090

**SUBSCRIBERS:**

We print the advertisements as sent to us by  
the auctioneer. It is not possible to check the  
correctness of the listed items, *so before  
traveling a long distance for a particular item,  
contact the auctioneer first by phone.*

Publishers Emeritus:  
John Armstrong, Randy Barz,  
Judy Huxmann, Lars Svendsen

Reproduction in any form is prohibited without  
the written consent of the publishers.

**ALL RIGHTS RESERVED.**

## POSTAL REPORT

Without fail for 42 years, *The Auction Exchange & Collectors News*  
has been delivered to the USPS by 5 pm every Friday.

Currently we are delivering the newspaper to the USPS by midnight Thursday.  
Despite this early entry into the postal stream and our vociferous lobbying at all levels  
of the USPS, we are experiencing delivery problems in the following areas:

Grand Rapids, MI, Farmington Hills, MI, Dorr, MI, Holt, MI, Jackson, MI,  
South Lyon, MI, Gaines, MI, Woodland, MI, Onstead, MI, Whitmore Lake, MI

If you don't receive a paper by Tuesday's mail, you may call us to have a  
paper sent first class. If it is after normal business hours, please call 800-876-5133 ext.  
135. Please also call your Post Office to report your late delivery.

## GENERAL ADVERTISING INFORMATION

➔ **DEADLINE IS WEDNESDAY AT 12 NOON**

----- Unless otherwise noted -----

### ADVERTISING SIZES AND RATES

1/8 page (5"Wx4"H) - \$83.80      1/2 page (10¼"Wx8"H) - \$315.56  
1/4 page (5"Wx8"H) - \$157.77      Full page (10¼"Wx16"H) - \$546.15

**Call for additional sizes and rates 888-339-3795**

#### Open Rate

Our open rate is calculated at \$7.33 per column inch. Call for more information about our Low Cost Standard Open Rate (\$6.98/col.) which is based on a minimum of 10 point type in the body copy.

#### Display Advertising

Each page is six columns wide (10-1/4 inches) by 15-1/2 inches high. Each column is 1-5/8 inches wide. We use a minimum of 10 pt. type (for body copy) for purposes of readability, and specific point sizes for heading (24 pt.), date (18 pt.), city/state (16 pt.) so please keep this in mind as you plan your ad. We typeset your ad to fit our specifications while keeping in mind your requirements and the need to minimize the cost of your ad.

**Back Cover Ads:** (Non-auction ads only.) Back cover ads are booked in advance by reservation - call for availability.

**Deadlines/Sending Copy:** Our deadline is 12 noon on the Wednesday before the issue date, (Monday). All material must be received by this time, including photographs. (Call for holiday schedules.) A 10% surcharge will be added to display advertising received Wednesday between 12 Noon and 3:00 p.m. We cannot always guarantee insertion of late ads. In all cases, it's a good idea to call and notify us that an ad is being sent, and to confirm that your ad has been received.  
**Mail Your Copy:** 27 N. Jefferson St., Knightstown, IN 46148. First class mail may or may not be deliv-

ered by deadline if you mail on Monday or later. If you mail on Tuesday, send by U.S. Express Mail, UPS Next Day or other "next day" services.

**Fax Your Copy:** You may fax your ad to us at: 877-223-3778.

**E-Mail:** Please send "Text Only" format, we cannot use files that have been saved in their native software. Email address: info@eauctionexchange.com

**Photos:** should be sent in JPG format, as attachments to E-mail. We accept color, or black and white.

**Accuracy:** Every effort is made to ensure the accuracy of your finished ad. Sending it to us well in advance is essential in allowing adequate time for proofing and faxing layouts to you for approval. We assume no guarantee or liability concerning the accuracy of published advertisements.

ISSUE DATE	DEADLINE (NOON)
APR. 9 .....	WED., APR. 3
APR. 16 .....	WED., APR. 10
APR. 23 .....	WED., APR. 17
APR. 30 .....	WED., APR. 24
MAY 7.....	WED., MAY 1
MAY 14.....	WED., MAY 8
MAY 21.....	WED., MAY 15

**THE AUCTION EXCHANGE And COLLECTORS NEWS ZONE MAP**

This zone map is a feature of *The Auction Exchange & Collectors News* and is designed to make it easier for you to locate events throughout the region. You will find the Zone symbol following the city and state in the heading of each ad. This symbol will correspond to the zone map shown here.

# UPCOMING AUCTION CALENDAR

JANUARY FEBRUARY MARCH APRIL MAY JUNE JULY AUGUST SEPTEMBER OCTOBER NOVEMBER DECEMBER

The Upcoming Auction Calendar is a listing of future Auctions beyond the current week.

**Auctioneers:** This service is provided at no charge. As with everything - we do our utmost to make sure that your Auction is listed in a timely and accurate fashion.

**For our Readership:** For more thorough listings contact the Auctioneer personally and tell them where you saw their ad!

## ZONE 2

**Tue., Apr. 2, Braun & Helmer Auction Service,** Estate, *Harrison, MI*  
**Sat., Apr. 6, Currie Auction Service,** Estate, *Baldwin, MI*

## ZONE 4

**Sat., Apr. 13, Art Smith Auctions,** Gun, Knives, *Grant, MI*  
**Sat., Apr. 13, Miedema Auctioneering,** Equipment, *Hudsonville, MI*  
**Sat., Apr. 20, JP Auction Sales Service,** Tool, Furn., Ammo, *Holland, MI*

**Thu., Apr. 25, Art Smith Auctions,** Quad, Tool, *Comstock Park, MI*

**Thu., May 2, Art Smith Auctions,** Vintage Tractor, *Fremont, MI*

**Sat., May 4, Dales Auctioneering Service LLC,** Farm Consignment, *Holland, MI*

**Sat., May 11, Art Smith Auctions,** Farm Estate, *Grant, MI*

**Sat., May 18, Art Smith Auctions,** Farm Estate, *Coopersville, MI*

**Sat., May 18, Dales Auctioneering Service LLC,** Estate, *Douglas, MI*

**Thu., May 23, Art Smith Auctions,** Tractor, Equip., *Ravenna, MI*

**Sat., Jun. 8, JP Auction Sales Service,** Auto, Tool, *Hopkins, MI*

**Thu., Jun. 13, Stantons Auctioneers,** Firearm, *Hastings, MI*

## ZONE 5

**Thu., Apr. 4, American Eagle Auction Co.,** Estate, *Tipton, MI*

**Sat., Apr. 6, Mel White Auctioneer,** HH, Misc., *Mulliken, MI*

**Sat., Apr. 6, Michael Auction & Realty Service,** Estate, *Hanover, MI*

**Sat., Apr. 6, White Star Auction,** Motorsport, *Bronson, MI*

**Wed., Apr. 10, Jared Mark,** Sporting, *Jackson, MI*

**Sat., Apr. 13, Burns Auction Company,** Estate, *Coldwater, MI*

**Sat., Apr. 13, Mel White Auctioneer,** Estate, *Lansing, MI*

**Sat., Apr. 27, Jay's Auctions,** Farm Equip., Misc., *Sturgis, MI*

## ZONE 8

**Thu., Apr. 11, Polk Auction Co.,** 2 Day Collector, *New Paris, IN*

**Sat., Apr. 20, Dan Coville,** Real Estate, *Orland, IN*

## ZONE 12

**Fri., Apr. 12, Whalen Realty & Auction,** Prim., Furn., Misc., *Neapolis, OH*

**Sat., Apr. 13, Bonnigson & Assoc Realty & Auctioneers,** Farm, *Gibsonburg, OH*

## LIST YOUR UPCOMING AUCTIONS FREE!

Day	Date	Auction Company	Type of Auction	Town	State

Mail to: The Auction Exchange & Collectors News  
 PO Box 90, Knightstown, IN 46148-0090

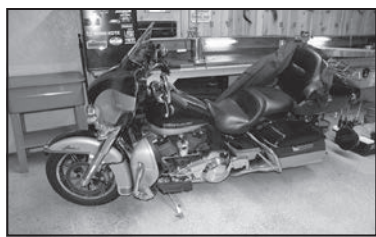
## PUBLIC AUCTION

**SATURDAY, APRIL 6, 2024 @ 10:00 AM**

LOCATION: 8016 E GARFIELD RD.

DIRECTIONS: 2 miles W. of Hesperia on M-20 to 192nd Ave., then S. 1 mile to site. Watch for signs.

**HESPERIA, MI 49421** zone 4



Beyer Auction has been commissioned to sell the following personal property at public auction, 2018 Harley Davidson Limited (4,686 miles) , TroyBilt riding mower, 13 foot canoe, paddle boat, a large assortment of garage tools including Milwaukee battery powered tools, many Paslode nailers, multiple air compressors, 10 1/2ft brake, Rigid and Milwaukee miter saws, gas power trowel, Miscellaneous household & furniture items, & more! The 2018 Harley Davidson will be selling at 12:30 pm. See our website for a complete list and pictures @ [www.beyerauction.com](http://www.beyerauction.com)



Beyer Auction Service Inc., Hesperia, MI 49421  
 Wade Schuberg, New Owner, 231-855-8555  
 Accepting Consignment Year-Round.

## ANNUAL SPRING 2-DAY EQUIPMENT & VEHICLE LIVE AUCTION

**SATURDAY, APRIL 27 @ 10 AM**

(Tractors - Equipment - Construction - ATVs - Tools)

**SUNDAY, APRIL 28 @ 11 AM**

(Vehicles - RVs - Boats)

Location: Eastern Michigan State Fairgrounds (Entrance off Almont Ave.)

**IMLAY CITY, MI 48444** zone 6

We are accepting consignments for our Annual Spring 2-Day Equipment & Vehicle Auction. This is an exciting large, two day, multiple auctioneer selling event!

**Early Consignments from County, Township Office and Municipalities Selling with No Reserves!!**

**Accepting Quality Consignments:** Farm & Ag Equipment - Construction Equipment - Tractors - Classic Cars - Vehicles - Power Sports - Marine - RVs - Motorcycles - Heavy Duty & Utility Trucks - Outdoor & Lawn Equip - Pedal Tractors - ATVs - Plus Much More!

**Terms:** Cash, checks, credit cards. 10% buyer's fee. Add'l 3% buyer's fee on credit cards. \$40 doc fee on all titled units. All purchases must be paid in full day of the auction and will be sold "as-is".

## Edward & Lucile Brettrager Farm

Edward & Lucile Brettrager Farm  
 Live On-Site & On-Line Auction



2095 Brettrager Dr. Saginaw MI

Auction Entrance/Parking 5366 East (M-13) Rd. Saginaw MI  
 From downtown Saginaw at the Saginaw Childrens Zoo, go south 5-miles to sale, or approximately 1/2 mile south of the Spaulding Twp. Offices.

**SATURDAY APRIL 6<sup>th</sup> @ 10 AM**

On-Line bidding on larger items powered by PROXIBID starting at noon. Inspection and absentee bidding available by contacting auctioneers the week of the sale.



### Auction Highlights

**Tractors:** Case Agri-King 870 Diesel Tractor- Open Station with wide front, 2-sets of remote hyd's @ 4690 hrs. very good original condition \* CASE 741 gas tractor-with wide front, remote hyd's., and hub duals, good condition w/good 15.5-38" hub duals \* Ford 800 gas utility tractor- 3 pt., p.t.o., 4-speed trans., good 13.4-28" tires \* Oliver 770 diesel row crop tractor- N/F, p.t.o., 12-volt \* (2) Farnall H narrow front tractors -(1) restored to primer stage, electric start \* Cockshutt 40 wide front tractor - Orchard fenders, remote hyd's, new front tires, rear wheel weights \* Cockshutt 30, Co-op E3, narrow front tractor \* Farnall F-14 \* Farnall F-20 Hi-Crop Model \* Co-Op wide front tractor \* MM 670 diesel tractor \* McCormick Deering WK-40 \* Allis-Chalmers WC **Crawler/Dozer:** Oliver HB35W Gas Dozer \* Cletrac EH6-62 Crawler Tractor \* Cletrac BG-SH Crawler Tractor (1937) \* Cletrac AG-6H crawler Tractor \* Caterpillar D4 Dozer **Trucks:** 1974 GMC Cab Over semi tractor, recently rebuilt 8V71 Detroit 318 HP engine @ 492k miles, 13-speed, very good condition \* (2) 1978 GMC 6000 & Chev C-60 grain body and flatbed trucks **Lift Truck:** \*Clark 6000# gas lift truck with double mast, large tires, power steering **Farm equipment:** 6' 3pt. rear blade \* 6' pto driven trailer-type tiller (1960)\*IH 4-14" semi-mounted plow \* Pull-Type 9.5' hyd land leveler \* MM 5' trailer-type gas powered tiller (1950) \* 16' solid wheel cultipacker - end transport \* JD # 858 5-bar hay rake (stored inside) \* JD 3-section cart type drag with leveler \* Onterio hi-wheeled wooden grain drill w/grass seeder, good shape \* 8' 3pt. C-shank drag \* Countyline 30 - gal. pull type sprayer with booms \* CO-OP E-15 pto driven sickle mower **Around The Farm:** Trailwagon (American Sportworks) 4x2 ATV, w/Honda engine, covered R.O.P.S., diff. lock & dump box \*2017 Massimo Buck 4WD UTV, hard top w/windshield, alum. wheels, diff. lock, winch & manual dump box \* Square D 3PH Transformer \*Acetylene torch set \*DeWalt 12" cutoff saw \*Syracuse plow on steel \*Barn & RR type jacks \*Tokheim #39 gas pump (missing one panel)\* 5-ton overhead crane system (disassembled)\*(10) 20' steel I-Beams \*(60) Sheets of used corrugated galv. steel \* 275 gal. overhead fuel tank w/stand \*30' Windmill Tower with wheel - no blades \*Craftsman walk-behind mower & mini rototiller \*Walk-behind plow & cultivator \*5 h.p. rear tine tiller \* Many more related items too numerous to mention—Check Website for updates

## PHOTOS ARE OF PAST CONSIGNMENTS



810-724-4035  
 office@rowleyauctions.com  
 www.RowleyAuctions.com

# WEEKLY Auction Calendar

The Weekly Auction Calendar is provided as a service for our Advertisers and Readers. We make every effort to ensure accuracy of the calendar but always refer to the complete Ad to verify the Calendar information. Unless specified by the Auctioneer in writing we reserve the right to designate the 'Type' of Auction listing. © INDICATES THE AD APPEARS IN SECTION 2 OF THE PAPER

DATE	TIME	AUCTIONEER/SRV.CITY	TYPE	PAGE/SEC.
<b>ZONE 2 MICHIGAN</b>				
Sat., Apr. 6	10am	Wayne Bancroft Auct. Honor, MI	Estate	9
<b>ZONE 4 MICHIGAN</b>				
Sat., Apr. 6	10am	Beyer Auction Hesperia, MI	Miscellaneous	6
Sat., Apr. 6	10am	Dales Auctioneering Holland, MI	Coll., Toy, Misc.	10
Sat., Apr. 6	11am	Kendall Tobias Auct. Hastings, MI	Estate	13
Sat., Apr. 6	9:30am	Stantons Auctioneers Scotts, MI	Antique	8
Sat., May. 4	10am	Dales Auctioneering Holland, MI	Farm Consignment	7
<b>ZONE 5 MICHIGAN</b>				
Sat., Apr. 6	10am	Mel White Auctioneer Mulliken, MI	HH, Misc.	13
Sat., Apr. 6	11am	Michael Auction Hanover, MI	Estate	11
Wed., Apr. 10	10am	Jared Mark Jackson, MI	Sporting	2
Sat., Apr. 13	10:30am	Burns Auction Co. Coldwater, MI	Estate	10
<b>ZONE 6 MICHIGAN</b>				
Sat., Apr. 6	10am	Wegner Auctioneers Saginaw, MI	Farm	6
Fri., Apr. 12	10:30am	American Eagle Dexter, MI	Liquidation	12
Apr. 27 & 28	•	Rowley Imlay City, MI	Equipment, Auto	6

DATE	TIME	AUCTIONEER/SRV.CITY	TYPE	PAGE/SEC.
<b>ZONE 7 INDIANA</b>				
Wed., Apr. 3	10am	Kraft Auction Service Lowell, IN	Farm	7
<b>ZONE 8 INDIANA</b>				
Apr. 11 & 12	8:30am	Polk Auction Co. New Paris, IN	2 Day Collector	9
<b>ZONE 12 OHIO</b>				
Fri., Apr. 12	10am	Whalen Realty Neapolis, OH	Prim., Furn., Misc.	13
Sat., Apr. 13	9:37am	Bonnigson & Assoc. Gibsonburg, OH	Farm	7
<b>ZONE WEB</b>				
•	•	Brad Neuhart	Online Consignment	12
•	•	Osborne Auct.	Online Estate	8
•	•	Rowley	Online Personal Property	3
•	•	Rowley	Online Estate, Consignment	3
•	•	RJM Auctions	Online Miscellaneous	8
Tue., Apr. 9	•	Orbitbid	Online Machine	3
Tue., Apr. 9	•	Orbitbid	Online Equip., Misc.	11
Tue., Apr. 9	•	Repocast	Online Equipment	3
Thu., Apr. 11	•	Repocast	Online Jewelry	10
<b>ZONE CALENDAR</b>				
Every Wed.	9am	Shipshewana	Shipshewana, IN Antq., Misc.	16

Need to Contact Us? Call: 1.888.339.3795 ext. 134 • E-mail: info@eauctionexchange.com



## KREGEL FARMS RETIREMENT AUCTION

Wednesday, April 3<sup>rd</sup>, 2024 - 10:00 am CDT

Full catalog and online bidding will be available for this auction!

Located at 7705 W. 159<sup>th</sup> Ave. Lowell, IN 46356

**OWNER KREGEL FARMS**

**Farm Tractors**  
 Combine - Farm Equipment  
 Hay Wagons - Weber Wagon - Forklift  
 Produce Equipment - Antiques  
 Collector Cars & Truck - Llamas - Goats  
 Horse Trailer - Dale Earnhardt Gas Go-Kart  
 Thomas the Train with Annie and Clarabel  
 Ride-On Train with Track  
 (2) Miniature Train Company  
 G16 Locomotives  
 Train Cars and Track from KiddieLand  
 And So Much More!



**KRAFT AUCTION SERVICE LLC**  
 AC30900120

Col. Conrad Kraft • AU01023657  
 Jonathan Kraft • AU10500173  
 219-973-9240  
 info@KraftAuctions.com  
 KraftAuctions.com

Auctioneer's Note: After many years of a successful farm and fall pumpkin patch business, the Kregel's are moving closer to the grandkids and are going to be selling off their equipment. Everything has been well maintained and cared for and ready for the next owner. Make sure to mark your calendars and attend this fantastic auction. Full online catalog will be posted two weeks prior to the auction. \*Please note the pumpkin patch has been sold to a new owner and will be open this fall like normal.\*

Terms: Cash, all major credit cards, or good check with positive ID. 3% service fee for credit cards. 10% buyer's premium onsite and 15% buyer's premium online. All items sold as-is. Not responsible for accidents or items after being sold. Information announced on the day of sale takes precedence over printed material.

(419) 547-7777  
 Bonnigson  
 BonnigsonAssociates  
 Bonnigson & Associates  
 Bonnigson.com

**Richter Farms Surplus Equipment Auction**  
 April 13th @ 9:37am  
 Property Preview: April 12th, 10am-4pm  
 Location: 1337 N CR 26, Gibsonburg, OH. [Watch for signs!](#)

**Live & Webcast**

Allis Chalmers 7000 Tractor, 1993 IH 9200 Semi Tractor, 1988 East 36' Aluminum Dump Trailer, Fruehauf 42' Flatbed trailer, Tender Trailer w/tandem axles... (2) 550 & 400 poly water tanks, Pacer SE2PL pump-B&S engine & hose; Small Crate Trailer for pigs, 4'x8'x34'h, John Deere 1750 Conservation 6-30" Planter, Great Plains Solid Stand 1500 Grain Drill & Center Pivot Hitch 1500, Hardi ESC 500 Sprayer, 500 gal., 45' Self Leveling Booms, 2016 Tar City CTX-121, 10' Rotary Tiller, Landoll 275 Soil-Master Disk Chisel, 5 Shank, IH 470 Fold-up Disk, 14' w/wings, Kongskilde 14' S-Tine Field Cultivator... 3 PT w/rolling basket, Brillion 10' Cultipacker, Brillion 5' Cultipacker Pups, Woods Pull Type 10' Mower, Westfield 6" x 30' Transport Auger, Rhino LR Rear Blade 8', County Line Post Hole Digger 12" auger, New Idea Hay Crusher, Mast 4-Prong Bale Fork, (2) Bradford 240-316 gravity wagon, 12' Flat Bed Wagon w/ John Deere 963 running gear, JD LA 115 lawn tractor, Swisher Rough Cut Trail Cutter Mower 44", Meyers 12' Aluminum Jon Boat & trailer, (2) Mobile Round Bale Feeders, Log splitter, Hog building/pen raised 14'x22', Minn Kota 65 mx 28 lbs. thrust variable speed & seats, 6' Land Roller, Poly Water Tank, chain binders, Misc. tables & chairs, Misc. sheep feeders & 4-H equip., & much more!

Since 1978  
 The Weekly  
 Auction &  
 Collectors Guide  
 for Michigan,  
 N. Indiana  
 and N.W. Ohio

**SPRING FARM CONSIGNMENT AUCTION**  
**SAT., MAY 4 - 10:00A.M.**  
 5075 Russcher Road, Holland, MI 49423  
 Located 5 miles South of Holland, MI (1 mile west & 1 mile North of Overisel)

**Wanted: Consignments**  
 Tillage, Farm Equipment, Tools Lawn & Garden, All Farm Related Items...  
 Load Your Trailer, We Will Sell Small Items Right Off Your Trailer  
**EARLY CONSIGNMENTS:**



Kinze MO188-02 model 3000; Great Plains Turbo Max 1200 disc; MF 85; Woods back blade; MF 3-pt 3-btm. plow; Whl. disc; Brush Hog; Snowblower; Shop tools

**FREE ADVERTISEMENT**  
**(616) 836-3132 OR (616) 218-7391**

SET-UP DATES:  
 APRIL 29-MAY 3 • 10:00 AM - 6:00 PM

**DALE'S AUCTIONEERING SERVICE, LLC**

**Dale Flokstra, Auctioneer**  
 5075 Russcher Road  
 Holland, MI 49423  
 www.dalesauctioneering.com

*Rely on experience — serving the public since 1983  
 We take pride in our business, our reputation is built on customer satisfaction — Let us go to work for you.*

# APPLE BLOSSOM ORCHARD & DOWNSIZING AUCTION

## OSBORNE AUCTION SERVICE, LLC (FORMERLY MIDLAND BID JUNKIES)



is honored to have been selected for this quality estate online auction in Midland, Michigan.



This small, family run orchard offered apples, donuts, apple butter making & more in its prime. Everything is well maintained and looking for a new home. There is a large variety of items for all interests from apple orchard farming, commercial kitchen equipment to home decor. In brief, this sale includes a Belshaw Donut Robot Mark II, Karmel Baby carmel popcorn machine, commercial popcorn machine, stainless prep table, sheet pan rack, rolling islands, commercial candy apple dipper, metal shelving units, apple sorting/washing machine, 150+ milk crates, berry paks, bushel baskets, bakery displays, antique barber chair, dog kennel, work benches, primitive advertising boxes, yard utility wagons, gas tiller, Campagnola pneumatic pruners & compressor, Berlin Woodworking table & chair set, grandfather clock, curio cabinet, patio furniture, garden decor, holiday decor, yard & garden tools, and so much more.



**THIS AUCTION IS OPEN FOR BIDDING AND WILL END ON WEDNESDAY, APRIL 10 WITH PICK UPS BY APPOINTMENT IN MIDLAND ON FRIDAY, APRIL 12 (10-6) AND SATURDAY, APRIL 13 (10-2)**

Preview is available on Tuesday, April 9 from 3-6 p.m. by appointment only by calling/texting 989-600-6008.

Detailed catalog, pictures and descriptions can be found at [www.osborneauctionservice.com](http://www.osborneauctionservice.com)

Lynnae Osborne, Auctioneer  
Osborne Auction Service LLC  
989-600-6008 • [osborneauctions@gmail.com](mailto:osborneauctions@gmail.com)



# BULK ONLINE AUCTION

BAR & RESTURANT EQUIPMENT

AUCTION ENDING: APRIL 11TH @ 11:00 AM EST

1757 N KIMBALL AVE, FLR 1, CHICAGO, IL 60647



INSPECT: APRIL 10TH

THIS WILL BE A BULK AUCTION - ALL ITEMS WILL BE SOLD IN 1 LOT.

3 SPECIFIC BREWING DISTILLING CONICAL FERMENTER TANKS W/ PENN CONTROL

SPECIFIC BREWING DISTILLING HORIZONTAL FERMENTER TANK W/ PENN CONTROL

PREMIER STAINLESS SYSTEMS KEG WASHER

AMERICAN EAGLE AE-30GA STAND MIXER

BLODGETT OVEN W/ STAND

AVANTCO 2 DOOR COOLER

AVANTCO 178APT48HC 2 DOOR PREP COOLER

AVANTCO 178UBB48SHCS BAR FRIDGE

REGENCY 600GRSU2324 GLASS RACK

GLASTENDER MFT-20 BAR SINK

REGENCY 600B31014213 TRIPLE BASIN SINK

REGENCY 600ST3060L PREP TABLE W/ SINK

REGENCY 600T30726 PREP TABLE

TRIPLE BASIN SINK

WARING WIH400 INDUCTION BURNER

STEAM TABLE

KITCHEN AIDE K126MIX5L MIXER, NOT IN SERVICE

KRAMPOUZ CREPE MAKERS

BACKYARD PRO MS-106115A 10" DELI SLICER

CAYENNE FTA7016 FLAT TOP

2) ADCRAFT DF 6L FRYERS

HATCO GRAH-36 FOOD WARMER

CALIFORNIA AIR TOOLS ULTRA QUIET AIR 60040CAD AIR COMPRESSOR

GAS COMMERCIAL HEATER

ICE WELL, 2 HAND SINKS, 16 BAR STOOLS, 34 CHAIRS, 13 SQUARE 2 TOP TABLES, 3 ROUND TABLES, 4 JBL SPEAKERS, EPSON WF-3720 PRINTER, CANON PIXMA PRO-100 PRINTER, SINGLE DOOR SAFE, DESK W/ SHELF, SINK W/ TABLE, 3X3 LOCKER UNIT, 38)

1/2 KEGS, 7) 1/6 KEGS, MISC. KITCHEN EQUIPMENT, GLASSWARE, RACKING & MORE!

VISIT [WWW.RJMAUCTIONS.COM](http://WWW.RJMAUCTIONS.COM) FOR MORE INFORMATION, PHOTOS & TO BID!



MONTGOMERY'S

**RJMAUCTIONS.COM**

(734) 459-2323 • E-Mail: [info@rjmauctions.com](mailto:info@rjmauctions.com)

## NOW ACCEPTING CONSIGNMENTS FOR STANTON'S FIREARM AUCTION

Barry County Expo Center, 1350 N. M-37 Highway, Hastings, MI  
Thursday, June 13, 2024 @ 8 a.m.



We presently are accepting consignments, collections, and estate accumulations of modern and antique long and handguns of all types. Whether you have one piece, or an entire collection, feel free to contact us. Our auctions produce interest from buyers all over the United States as well as buyers participating internationally. Our recent gun sales have generated more than \$1,600,000.00 selling to full-house crowds who have attended from all over Michigan, as well as adjoining states and offsite participation. There is also a strong market for swords, civil war memorabilia, Winchester and Marbles collectibles, and Indian articles. Stanton's offer free pickups available for collections throughout Michigan and around the country.

Stanton's Auctioneers and Realtors

Vermontville, Michigan 49096 • Ph. 517-726-0181

[stantonsauctions@sbcglobal.net](mailto:stantonsauctions@sbcglobal.net) • [www.stantons-auctions.com](http://www.stantons-auctions.com)

Steven E. Stanton, 517-331-8150

Email - [stevenestanton@gmail.com](mailto:stevenestanton@gmail.com)

Michael C. Bleisch, 517-231-0868

Email - [mcbleich@gmail.com](mailto:mcbleich@gmail.com)



## LARGE ANTIQUE AUCTION, FOREST "WOODY & CAROLYN WOODWARD"

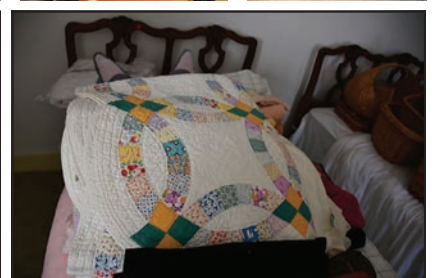
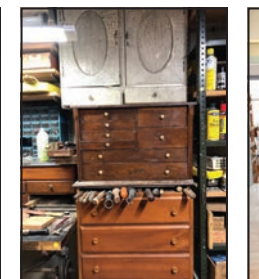
on SATURDAY, MORNING, APRIL 6TH @ 9:30 AM

LOCATION: 8610 - 34TH STREET SOUTH

SCOTTS, MI 49088



A large, excellent and diverse collection of antiques, country and early American pieces, primitives, china, baskets, jewelry, sterling silver pieces (candelabra, bowls, etc.), and hundreds of boxes of unpacked antiques and smalls. We will also be selling the tools, shop items, a Haulmark enclosed trailer, a 2 wheel trailer with drop-ramp, a good group of craft, sewing and spinning items including a modern spinning wheel, bottles, jars, oil lamps, wood butter bowls, crocks, some very good furniture pieces, pottery, pattern glass, quilts, Indian relics, post and trade cards, County atlas, clocks, Steiff toys, canoe, 3 pt. scraper blade & rotary mower, Generator, copper apple kettle, shop and woodworking tools, and lots more. We will be selling in 2 rings throughout the day.



144 S. Main Street,  
P.O. Box 146  
Vermontville, MI 49096



Ph. 517-726-0181  
Fax 517-726-0060

e-mail:  
[stantonsauctions@sbcglobal.net](mailto:stantonsauctions@sbcglobal.net)  
[www.stantons-auctions.com](http://www.stantons-auctions.com)

Selling all types of personal property and real estate at auction anywhere.  
Call for a no-obligation consultation to discuss your personal situation.



# MCKEEN LIVING ESTATE AUCTION

SATURDAY, APRIL 6, 2024 • 10:00 AM

2200 Marshall Rd. • HONOR, MI 49640 zone 2



**VEHICLES:** Motorcycle  
**HOUSEHOLD & FURNITURE:** Hutches ~ End Tables ~ Recliner ~ Corelle Wear ~ Dishes ~ Dresser ~ Linens ~ Dining Room Table & Chairs ~ TV ~ Couch ~ Clocks ~ Rocking Chairs ~ Dresser w/Mirror ~ Brown Recliner ~ Blond Dressers ~ Side Tables ~ Trunk ~ Corner Shelf.



**SHOP:** Cabinets ~ Vise ~ Gas Cans ~ Salamander Heater ~ Belt Sander ~ Planer ~ Wood Clamps ~ Welding Helmet ~ Powermate Generator ~ Tool Boxes ~ Table Saws ~ Hand Tools ~ Air Compressor ~ Wet Tile Saw ~ Scaffolding ~ Ladders ~ Painting Supplies ~ Space Heaters ~ Joiner ~ Radial Arm Saw ~ Jig Saw ~ Delta Sanding Center ~ Pressure Washer ~ Long Bench Table Saw ~ Electrical Supplies ~ Cement Mixer ~ Lumber ~ OSB.



**YARD & GARDEN:** Craftsman Riding Mower ~ Yard Machine Blower ~ BBQ Grill ~ Rakes ~ Coolers ~ Yard Tools ~ Hoses ~ Leaf Blower ~ Toro Push Mower ~ Gardening Supplies ~ Garden Tractor.

**SPECIAL INTEREST ITEMS:** Artwork ~ Designer Sewing Machine w/Embroidery Attachment ~ Snowshoes ~ Bows ~ Scuba Diving Gear ~ Divers Tanks ~ Safes.



**MISCELLANEOUS:** Frames ~ Car Ramps ~ Storage Trailer  
 ~ Many More Items Too Numerous to Mention ~

**NOTES:** Preview at 8:00 sale day only.

Food and Restrooms Available.

**TERMS:** Cash, check, or major credit cards with identification. WBAS LLC is a Class D Auto Broker and all Secretary of State Paperwork will be done on site and fees will apply. All purchases must be paid for on auction day. The above information is believed to be accurate but is furnished for convenience only and is not a representation or warranty by the auctioneer.

All items sold as-is, where is with no warranties of any kind. This listing is subject to additions and deletions prior to sale day. Announcements on day of sale take precedence over printed matter.

Wayne Bancroft Auction Service LLC is not responsible for lost or stolen items or for accidents on the premises before, during, or after the sale. No Dogs accept Certified Service Animals permitted.

**WAYNE BANCROFT**  
**AUCTION SERVICE LLC**  
 www.waynebancroftauctions.com • (231) 263-5327  
 "Bringing Buyers & Sellers Together Since 1970"

# 2024 Annual Spring COLLECTOR AUCTION

Accepting Consignments Now

LOCATION: 72435 SR 15 - NEW PARIS, IN 46553

**Thursday & Friday**  
**April 11 & 12, 2024**  
 Starting at 8:30 am EST Daily

**2 Huge Days!**

**Polk Auction Company**  
 NEW PARIS, INDIANA  
 #AC30900108 #AU19400160  
[www.polkauction.com](http://www.polkauction.com)  
 72435 State Road 15  
 New Paris, IN 46553  
**1.877.915.4440**

**Day 1 - Thursday, April 11**  
 Ring #1 - Tractor Parts  
 Ring #2 - Toys, Signs, Memorabilia, Collectibles, Literatures & Primitives

**Day 2 - Friday, April 12**  
 Ring #1 - Hundreds of Non-Running Tractors & Running Tractors Hit & Miss Motors and 150+ Highly Desirable Tractors  
 Ring #2 - Equipment, Implements, Pallets of Parts & Much More!!

**Call us to Consign**

**1.877.915.4440**

**Bid Online or Live!!**

**BID NOW**

Online Bidding Provided By  
**EquipmentFacts**

Live Online Bidding  
**Powered By proxibid**

# COURT ORDERED JEWELRY STORE LIQUIDATION ONLINE AUCTION

## Thursday, April 11 | Byron Center, MI

zone web

Over \$1,000,000 in Retail Value Jewelry Will Be Sold to the Highest Bidders on This One Day Online Auction! Includes an Entire Jewelry Stores Inventory of Wedding Rings, Necklaces, Pearls, Bracelets, Earrings and More! Don't Miss Out on This Rare Opportunity to Choose from 100's of Beautiful Pieces of Gold, Platinum, Silver and Diamond Jewelry!



### MIEDEMA'S REPOCAST

VIEW ALL ITEMS IN DETAIL AND/OR BID AT REPOCAST.COM OR CALL OUR OFFICE AT 616-261-4987.

## ADVERTISERS

To avoid the unfortunate possibility of not having your ad reach 25,000 potential buyers, confirm that your ad has been received at our office, (888) 339-3795

### ESTATE AUCTION

#### SATURDAY, APRIL 13 @ 10:30 AM

LOCATION: 780 JONESVILLE RD.  
DIRECTIONS: From US 27 go east 3 miles to Auction site.  
COLDWATER, MI 49036 zone 5

*This Auction Is Truly A Lifetime Accumulation From Old Barn Finds, Antique Vehicles, Wreckers, Toys, Signs, Tools, And So Much More.*



ESTATE OF THE LATE RANDY NICHOLS

SELLER TUCKER NICHOLS  
VISIT [BURNSAUCTIONEERS.COM](http://BURNSAUCTIONEERS.COM)  
OR [AUCTIONZIP.COM](http://AUCTIONZIP.COM)  
#26461

**Burns Auctioneers**  
Stephen Burns • 517-617-5487  
728 N. Union City Rd. • Coldwater, MI 49036  
E-mail: [burnsauctioneers@gmail.com](mailto:burnsauctioneers@gmail.com)  
Web: [www.burnsauctioneers.com](http://www.burnsauctioneers.com)

### PUBLIC AUCTION

#### SATURDAY - APRIL 6 - 10:00 A.M.

LOCATION: 5075 RUSSCHER ROAD  
HOLLAND, MI zone 4

**COLLECTIBLES:** Standard Oil barrel w/pump; various kerosene lanterns; Cast iron mailbox; Cast iron weather vane; coal pail w/shovel; several small bells; lightening rods w/balls; MANY Budweiser Beer Steins NIB; collector plates; Thailand Buddha bronzeware 4 place setting flatware; Thai Elephant flatware nickel bronze 8 place setting w/wood case; fire alarm bell; vintage Crane Orchard picture

**SIGNS:** Piedmont cigarette metal sign; M.P. Witteveen Builder-Holland (wood); In the Back point-(wood);

45 MPH; Miller 64 metal sign; Chevrolet metal sign; Lone Star Beer mirror; Budweiser mirror;

**SPORTSMAN:** bear rug; boxes of antlers; Buck Deer mount; long horn mount; turkey frier; tackled boxes; deer feeder; Bear recurve bow; Impulse compound bow; several scopes.

**MISC:** PEX crimper; 440# electric hoist NIB; Black & Decker/Stanley tool combo set NIB; John Deere cookie jar NIB; electric meter lamp; candy dispenser; wall telephone; tool boxes & tools; walking sprinkler; Seiko mantle clock

**HARLEY DAVIDSON ITEMS:** park bench & table w/cast frame; mounted puzzle; exhaust pipes; blanket/throw; helmet; saddle bags; small memorabilia; stainless grill set; leather coats, chaps; misc.; Sandy Corley run 2016 mirror; rims & tires;

**TOYS:** Hubley cast car carrier (no cars); Wyandotte construction crane pressed steel; Standard International flat bed-plastic; 1950 Standard International pick up promo; Cast 8 horse hitch w/wagon; MANY 1/64 die cast semis; American Muscle die cast cars; Dale Earnhardt posters/cars; baseball & football cards; erector sets; Indiana Hoosier NCAA National Champs signed basketball

**AUCTION NOTE:** Local collector has cleaned out his storage unit. Lots of great finds. Much more than listed. See web site for many pictures. Payment cash, check, credit card (5% fee). All displayed indoors in heated facility.



**DALE'S AUCTIONEERING SERVICE, LLC**

Dale Flokstra, Auctioneer  
(616) 836-3132  
5075 Russcher Road  
Holland, MI 49423  
[www.dalesauctioneering.com](http://www.dalesauctioneering.com)

# Don't be in the dark; collect eclipse memorabilia

BY DONALD-BRIAN JOHNSON

Blame it on Hoppy. When the "Hopalong Cassidy" tin lunchbox hit stores in 1950, bag lunches faced a formidable competitor. Now, those tasty peanut-butter-and-jelly sandwiches could be packed securely in a container festooned with images of your favorite performers or TV characters. Even better, the accompanying thermos bottle, carried through the visual theme. In the first year of production, Aladdin Industries, Inc. the "Hopalong" manufacturer, sold over 600,000 Hoppy lunchboxes, at \$2.69 each. For the next 35-plus years metal lunchboxes provided a reliable source of bragging rights for schoolkids, a reliable tug on parents' pocketbooks, and a reliable means of renewable income for the companies that churned out the boxes. If



Below: With the appropriate phrase to describe a total solar eclipse; "...the day was turned to night, and fire in the midst of heaven..." this long sleeve, turtleneck vintage shirt for the February 26, 1979 solar eclipse is available on eBay from Dreams in Motion of Chicago, Ill. It can be viewed here <https://tinyurl.com/5n7z75r4>

you found your way to the top of the pop culture heap, chances were good that you'd soon be immortalized on a lunchbox. Long before metal lunchboxes, kids (or most often, their moms), found other means of lugging lunches around. Folks have relied on hollow gourds, wicker baskets, oilcloth wraps, and even oiled goat skins. In the 1880s, empty biscuit and tobacco tins were recycled as "lunch pails."

By the turn of the 20th century, metal lunchboxes specifically geared for children's use were marketed. These early lunchboxes, on the order of kid-sized picnic baskets, featured generic illustrations of (what else?) kids. For most families however, specifically designated lunchboxes were a luxury they could ill afford. The price: \$3.50 each (over \$100 in today's money). See *Eclipse Memorabilia* page 14



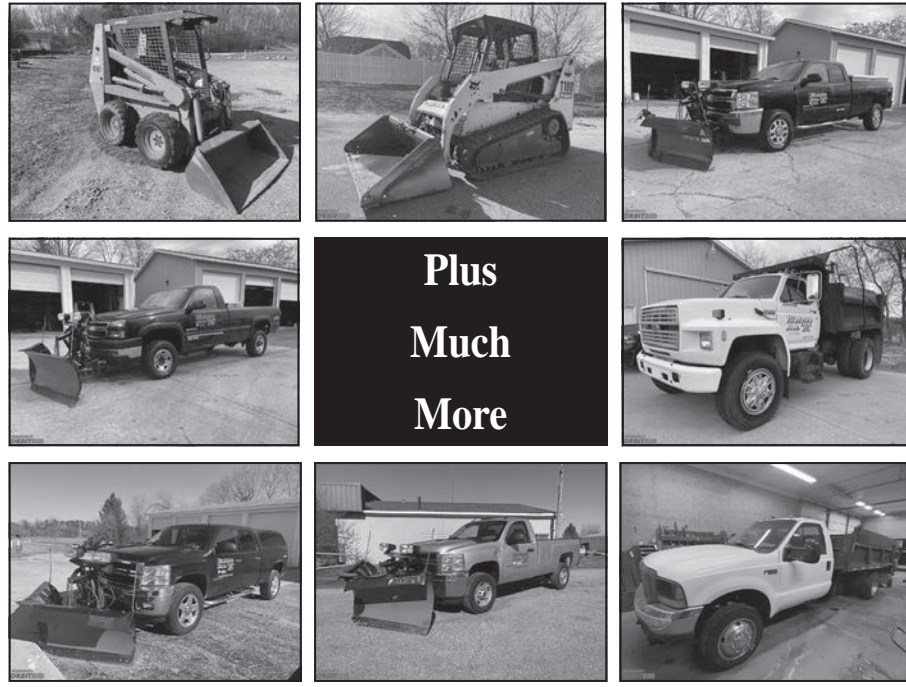
Above: Dated 1994, this vintage Griffith Observator Solarama solar eclipse and sunspot viewer was used to safely look at the sun.

Right: This vintage poster encourages everyone to "See The All American Total Solar Eclipse" that took place August 21, 2017, with the phrase "From Sea to Shining Sea." The poster states that this particular eclipse was the "First Total Eclipse Over the U.S. in 35 Years." This is one of 31 posters designed by astronomer Tyler Nordgren. Each of these posters, created for NASA, have a retro WPA-look with bold coloring and graphic lettering.



## VLIETSTRA BROS. POOL, CONSTRUCTION, & SNOW REMOVAL ONLINE AUCTION zone web TUESDAY, APRIL 9 | KALAMAZOO, MI

- Chevrolet pickup trucks & plow trucks
- Bobcat and Case skid steers
- 1994 Ford F800 dump truck
- Boss snow plows
- Equipment and utility trailers
- Cement mixers
- Construction tools
- Pool & spa parts inventory
- Water treatment inventory
- Compressors
- Shop equipment
- Welders
- Snow blowers
- Pallet racking
- Shelving
- Hand tools
- Power tools
- Work benches
- Office furnishings



Plus  
Much  
More

MIEDEMA'S ORBITBID

VIEW ALL ITEMS IN DETAIL AND/OR BID AT [ORBITBID.COM](http://ORBITBID.COM) OR CALL OUR OFFICE AT 616-261-4987.

## ESTATE AUCTION

CONDUCTED BY  
**MICHAEL AUCTION & REALTY SERVICE, LLC**  
The Complete Auction, Real Estate & Appraisal Service

Sidney (Sid) Michael 65 Hillsdale St. Hillsdale, MI 49242 Office: 517-437-7387		John Michael 3rd Generation Auctioneer/Realtor Coldwater 517-398-1855
---	--	--

SATURDAY, APRIL 6 AT 11:00 AM

LOCATION: 6386 BUCKMAN RD.

**DIRECTIONS:** North of Moscow on Moscow Rd. 3 miles to Buckman, then West to Auction. Please, no pets or animals, only ADA service trained animals allowed in auction area. (Shuttle will be available Weather permitting).

HANOVER, MICHIGAN 49241 zone 5

TOYOTA AUTOS - VINTAGE TOYOTA PARTS -  
1999 HONDA CBR 600 F4I CYCLE

1993 Toyota MR2 - T-tops - 117k miles - 5 speed - highly modified turbo engine and super fast, runs great; 2005 Toyota Echo w/207K miles - auto - 4 cyl - hatchback - auto trans - runs good; 1985 Toyota SR5 hatchback - 179K miles - inline 4 - new paint job - project car; 1999 Honda CBR 600 F4-I "crotch rocket" looks new, very nice; Honda racing suit (small) - 4 racing helmets; Vintage Toyota parts incl. radiators - carbs - engine parts - body parts - doors - bumpers - tires - rims - mags - 3 - 4 cyl. engine blocks - 6 cyl. engine block - bucket & bench seats - windows - lights - MR2 carbon fiber front spoiler - rear spoilers - tail & exhausts - springs - blowers - cowlings - fenders - if Ron didn't have it - you probably don't need it. **TOOLS:** 1 - 2 ton engine crane; 3 floor jacks; engine stand; Vulcan Ominpro 220 wire welder; Honda VCV gas power washer 8 in. bench vise; wheel barrow; jack stands; Hardy model H4 - 1 - 17 outside wood burner furnace - SS - 180K BTU (you load); JD LA110 - 20 HP - 42in deck lawn tractor (good).

SEGA/XBOX VIDEO GAMES - HOUSEHOLD -  
DIE CAST MATCH BOX & HOT WHEELS

2 Vintage Jart games in box; VERY large quantity (Approx. 100+) of Sega - Dreamcast & Genesis games - accessories - games - controllers - etc many unopened; 3 skate board decks - 1 autographed by Slip Not; Sega Dreamcast game NIB; Slayer box set; Everlast punching bag; Olympic free weights set - bars & benches inc. squat & ab; Avanti medium size chest freezer; Black Futon sofa; 42 in Samsung TV; foot lockers; 2 large ammo cans 28X11 in. Slayer band box set; Vintage Toyota model kits NIB 4 NIB Matchbox cars inc. Supra; quantity of Hot Wheel cars NIB; WWII Time Life book set; kid's tricycle; Winchester knife set NIB; vintage toy Wyandotte crane; misc. household.

PERSONAL OF THE LATE RON SCHWADE

**TERMS:** Cash or check, credit card w/4% fee Settlement before removal. Street dogs Lunch on grounds.



# MASSIVE APPLIANCE LIQUIDATION AUCTION!

Noble Appliance • 7001 Dexter Ann Arbor Rd.  
**DEXTER, MI 48130** **ZONE 6**

**Friday, April 12, 2024, 10:30 AM**  
Doors Open at 9:30 AM

**SNEAK PEEK PREVIEW:**  
Thursday, April 11th, 12 Noon to 3:00 PM

Brand New Stainless Steel Refrigerators, Gas Ranges, Black Box Networking Cabinets, Pallets of Scotch Brite, Paper, Disinfecting Wipes, and much more!

Can't attend?  
Then Leave An Absentee Bid on select items at: [www.MichiganAuctionCompany.com](http://www.MichiganAuctionCompany.com)



## ADVERTISERS!

Verify that  
your ad was  
received!  
Call toll-free  
for  
verification:

# 888-339-3795



ONLINE ONLY

## 2024 Spring Consignment

# AUCTION

Bidding ENDS Saturday April 6, 2024 @ 9:00 am est.  
Items located @ 12544 Carpenter Rd. Milan, MI & Other Locations  
See [www.bradneuhart.com](http://www.bradneuhart.com) for all info



**AUCTIONEER'S NOTE:** Due to the overwhelming success of our previous ONLINE ONLY Spring Consignment Auctions we have decided to make our 2024 Spring Consignment ONLINE ONLY again! Bidding runs from Saturday March 30th until Saturday April 6, 2024 with items starting to end at 9am eastern. Item payment/pickup is TUESDAY April 9th & Wednesday April 10th from 9am-5pm. You can view items, register and bid at [www.bradneuhart.com](http://www.bradneuhart.com)

**ITEMS ALREADY CONSIGNED:** Kinze 4900 16R Precision Planter—EXCELLENT! JD 7000 12R Planter; Great Plains 1510 Drill; MH Pony; MH 30; IH Cub—Restored; NEW Exmark Zero Turn Mowers; NEW Toro Commercial Zero Turn Mowers; TONS OF NEW Skid Steer Equipment - ALL SELLING NO RESERVE; NEW Hot Water Pressure Washers; NEW Workbenches and Toolboxes; NEW Mini-Skid Steers; Landpride 20' and 15' Batwing Mowers; Woods 12' Finish Mower; 3pt. Stump Grinder; Hay Grapples; Kinze 6R Planter; John Deere 650; Municipal & School Surplus; JD 825i; Can Am 800; Harley Davidson Police Bike; John Deere 3032; John Deere 4320; Case IH 9270; IH Hydro 100; Pickup Trucks; Timpco 42' Grain Trailer; Talbert Traveling Axle 53' Trailer; East Dump Trailer; Lund 17.5 Fishing Boat; Pontoon Boat; Fence Panels; John Deere LA; Kubota M5700; Welders; Generators; John Deere X730; Trailers; 1930 Model A Ford; Triumph Spitfire; 1967 Ford Galaxie Conv.; LED Sign Trailer; IH 16' Disk; Great Plains Solid Stand 10 - NICE; John Deere 7000 12R Planter; Great Plains 1510 No-Till Drill; John Deere 7000 6R Planter; Kinze 2500 12R Planter; Krause 28' Finisher; UV 28' Rolling Harrow; DMI 730B Disk Ripper; **ZIMMERMAN VT-1080 GRAIN DRYER**; UV 46' Rolling Harrow; NEW Steel Carports; 40' High Cube Shipping Containers (NEW); TONS OF NEW SKID STEER EQUIPMENT; NEW Fabric Buildings (numerous sizes); NEW Carports; NEW Driveway Gates and Fencing; NEW Self Contained Restrooms; NEW Chains & Binders; Equipment and MUCH MORE!!



NEW EXMARK ZERO TURNS

NEW TORO ZERO TURNS

KINZE 4900 16R

NEW Hoop Bldgs.

**BRAD NEUHART**  
AUCTIONEERS  
REAL ESTATE BROKERS  
(734) 439 - 7939  
[www.bradneuhart.com](http://www.bradneuhart.com)

Terms: Cash or acceptable check with proper ID. Property settled for BEFORE removal. NOT RESPONSIBLE for accidents. Not responsible for "No Shows". Auctioneers/Clerks assume NO liabilities or guarantees. Statements made day of sale take precedence of any other matter. 10% BP in effect w/ \$2500 cap/Item. See website for any other terms of sale.

# Lamps

FROM PAGE 1

dry-powder pigment merges with the plaster.

While many different decorative objects were made from plaster of Paris, chalkware lamps have proven to be highly collectible over time. These lamps are easily recognized as symbols of both America's carnival past and its mid-century fascination with inexpensive decorative items.

Mid-century chalkware lamps suggest exotic or

romanticized historical beauty, offering natural and abstract designs. Some of the most popular chalkware lamp motifs include Chinese dancers (these lamps are often sold in pairs), animals, abstract, flowers, and even highly sensual human forms. Nearly every culture is found on chalkware lamps, including Hawaiian, Asian, African, and even Native American.

Most chalkware lamps were designed and manufactured to be lamps, but look closely when buying a chalkware lamp. Some

chalkware non-wired figurines have been drilled out and wiring inserted to create lamps. If done well, chalkware is not truly damaged by drilling into it, and most of the lamps made in this fashion are unique, making them ultimately nice pieces for a collection.

The earliest chalkware pieces were often hollow, but later, 1950s, pieces are solid, heavy pieces. Caring for mid-century chalkware lamps is problematic. Chalkware chips easily, so it is extremely difficult to find genuine 1950s chalkware lamps

**Right:** Vintage chalkware "Ballet Dancers" lamp set with fiberglass shades. This set was offered on eBay for \$480.



that are not scratched or dinged. The colors on chalkware tend to fade over time since they were essentially surface colors that were never glazed or fired into the ware. Chalkware was often given varnish or beeswax coatings that, over time, simply wear off, leaving the colors and lamp surface to deteriorate. Finally, chalkware is porous and should never be washed. Essentially, you cannot clean vintage chalkware since rubbing the lamp's surface with a wet cloth will remove the lamp's coloring.

Mid-century chalkware lamps were manufactured in most industrialized countries, but the majority of American collectors seek American-made lamps. Some of the manufacturers to search for include Alexander Baker Company "ABCO" of New York, Continental Art Company of Chicago, Jo Wallis Lamp Company, and Universal Statuary Corporation.



**Above:** Vintage, mid-century American gold-gilded chalkware lamp that was offered on eBay for \$750.



**Right:** Circa 1950s Charlie Chaplin chalkware lamp valued at \$165.

## DAVID K. NICKEL AUCTION SATURDAY, APRIL 6, 2024, 10:00 AM

LOCATION: 9391 E. EATON HWY.

DIRECTIONS: M43 to Mulliken, North on Charlotte St. 1 mi. to Eaton Hwy., east 1/2 mi.

**MULLIKEN, MI 48861** zone 5

The following will be sold at auction:

*NOTE: Most every item is in very good condition and well cared for.*

**TRACTORS/TRAILERS:** Kubota BX2370 diesel compact tractor, 4X4, w/loader, bucket, blade, 851 hrs; John Deere 1025R compact tractor w/loader, cab, mower deck, 536 hrs; County Line 48" 3pt landscape rake; Tarter 60" 3pt rototiller; Cargo Pro 16' aluminum car hauler; Load Boss 3cf electric dump trailer.

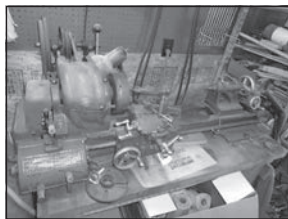
**TRUCKS/AUTOS:** 1990 Ford F800 diesel areal bucket truck (runs, useable); 1980 VW Rabbit, under restoration; Huverstar hover craft w/trailer; Racing dune buggy w/o motor; Citycar battery car, needs batteries; EZ Go battery golf car w/new batteries; Scout battery chair.

**LAWN:** John Deere EZ Trak Z445 zero turn mower, 4056 hrs; Gravely zero turn mower; Case garden tractor w/rototiller; Steel lawn roller; Jonsered, Cub Cadet & other chainsaws; 20 Gallon lawn sprayer; Huskee 22T log splitter; John Deere leaf vac trailer; Craftsman 3 wheel line trimmer.

**POLE BARN:** Oxygen/acetylene welding outfit; Propane welding tank; 2 Port-a-powers; Transit; HD ratchet straps; IR 3/4" elec. Impact wrench; 3/4" Socket set; Hyd. Floor jacks; Bottle jacks; 22T Hyd/air jack; Ass't hand & power tools; Master Force bench vise; Century 145 amp wire feed mig welder; Greenlee metal bandsaw; Guardian Power floor drill press; Lincoln 230 arc welder; Performax wet sharpener; Craftsman grinder on stand; Atlas Quick Change 10" lathe w/arbor cutter; 28' Fiberglass ext ladder; Hand landscape rake; Pittsburg hyd. Engine lift; 20T arbor press; Craftsman 10" table saw; Brute 3200psi power washer; Poulan pole saw; Combination folding ladder; Appliance cart; Guardian Power floor drill press; Lincoln 230 arc welder; Performax wet sharpener; Craftsman grinder on stand; Atlas Quick Change 10" lathe w/arbor cutter; 28' Fiberglass ext ladder; Pittsburg hyd. Engine lift; 20T arbor press; Brute 3200psi power washer.

**HOUSEHOLD/MISC.:** Hide-a-bed & reclining sofa; Maple trestle table w/4 chairs; Oak trestle dining table w/2 leaves, 6 chairs, china cabinet; China hutch; Curio cabinet; Bissell Big Green carpet cleaner; Rocker/recliner chair; Lifesmart massage chair; East Point convertible air hockey/pool table; Shuffle board table; Snow White & 7 Dwarfs cement lawn ornament set; Ass't new fishing tackle; 10'X8' Storage shed on platform; '50's, '77, '78, '80 Coleman lanterns; 2 Hiawatha bicycles; Wood telephone co ladder; Cast iron letter box; This is a partial list, many more items.

**TERMS:** Cash, checks, credit cards w/3.9% add on fee. All items will be sold as is. The seller nor the auctioneer will be responsible for accidents day of sale or items after sold.



**Mel White** 50 Years Service  
Auctioneer • Appraiser

**Okemos, MI**  
517-394-3006  
E-Mail: melw21588@gmail.com  
Web: www.melwhiteauctioneer.com

## TOBIAS COMING AUCTIONS

★ **ESTATE AUCTION** ★  
**SATURDAY, APRIL 6TH at 11:00 AM (NOTICE TIME!)**

LOCATION: 3697 E M-79

DIRECTIONS: From Hastings, take M-37 South 1 mile to M-79, East 2 1/2 miles to auction.

**HASTINGS, MICHIGAN** zone 4

**Antiques & Collectibles:** Toys inc. Easy Bake Oven w/box; Storybook Dolls; Model Kits; Barbie Trunk; & Other Toys! Paper Maché Torso Mannequin; Ephemera; Ladies Hats; General Store Counter Paper Wrapper; Sewing Patters; Sports Illustrated Magazines; Other Magazines; Clarinet; Lard Tin; Potato Chip Can; Comics; Baskets; Advertising Items; Dishes; Bottles; Oil Lamps; Chairs; Christmas Decor; Painted Windows; Poker Set; Oil Painting; Art Work; Wire Bicycle Basket; Check Writer Machine; Presidential Assassination Newspapers; Doctors Leather Bag; Linens; Signed Baseballs; Purses; Framed Fair Ribbons; Pressure Cooker; Books; Calendars; Native American Wall Decor; Barn Pulleys; Wire Bicycle Basket; Traps; Sports Cards; Jewelry; Barroom Light; Oak Ice Box & Much More! **Household & Misc.:** Samsung 19.5 cu.ft. Stainless Refrigerator; Coffee Table & End Tables; Dressers; Dorm Room Refrigerator; Small Country Pantry Cupboard; Oak Dining Room Table; Microwave; Pampered Chef Apple Peeler; Oak Wall Shelf; Country Decor Items; Metal Chafing Pans; Sewing Machines; Sewing Patterns; Computers & Printers; VHS Player; Picnic Basket; Luggage; Vacuum Sweepers; Ladies Shoes(New in boxes); Commercial Mylar Balloons (unopened) & Much More! Expect Many Surprises!! Please Notice: Not able to have Auction on Site due to lack of parking. Moved for Public Convenience!

**KENDALL TOBIAS, AUCTIONEER**  
Hastings, Michigan • (269) 945-5016  
Cell Phone: #1-269-366-5415

For More go to [#23371](http://www.auctionzip.com)

## Primitives-Furniture-Lamps Glassware-Collectible Auction

Friday, April 12, 2024 @ 10am

**PREVIEW: Week of Auction from 8am-3pm**

HELD AT: WHALEN AUCTION BLDG., 8020 MANORE RD.

**NEAPOLIS, OH** (GPS use Grand Rapids 43522) zone 12

See [whalenauction.com](http://whalenauction.com) for photos & more information.

**Antique Furniture:** Early Dry sink; Oak library table w/built in desk; Hoosier left side green cabinet; plant stands; oak showcase; chairs; rockers; tables & stands;  
**Lamps:** 7 Victorian hanging, GWTW, hanging fixtures, boudoir incl. reverse painted, stem, banquet & shades; **Glassware:** 13 Pc's of Labino, Baker & Lonsway glass; 30 St. Clair paperweights; Fenton; pressed, pattern & colored glass; Old Ivory; toothpick holders; Amberina & cranberry; water pitchers & more; **Primitives & Advertising:** Signed Griswald rabbit mold, marked Erie PA; benches; shaving horse; 2 spinning wheels; many wood, brass & tin items; butter churns; signs; wood bowls; advertising; crockery; advertising boxes; yardsticks; Violine; Child wood wheel barrow; Fordson & IH toolboxes; wood scoops & kitchen utensils; bicycles; toys; pictures; plus more!

**Terms:** Cash or check w/I.D., credit/debit cards accepted with 3% processing fee. Lunch by Sandy's.

**Order of sale:** Selling in 2 rings, 1 selling primitives & furniture while another sells glass, lamps & misc. Labino & Baker list selling @ 12noon

**WHALEN WHALEN**  
REALTY & AUCTION, LTD.  
Auctioneers: John & Jason Whalen,  
Mike Murry, George Bly  
419-875-6317 • info@whalenauction.com  
Information herein deemed reliable but not guaranteed.

### Eclipse Memorabilia

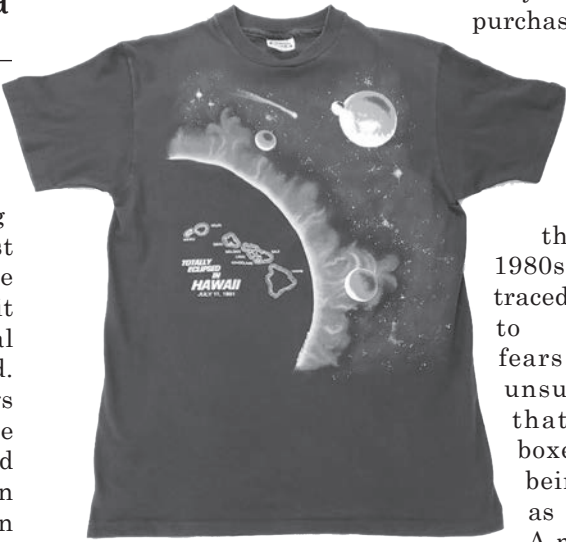
FROM PAGE 11

So, in most cases packed paper bags still filled school lunchrooms.

Although "Hopalong Cassidy" was the first metal lunchbox to take the nation by storm, it wasn't the first metal character box marketed. That distinction belongs to the "Mickey Mouse Lunch Kit," which had limited production in 1935. Those with an appetite for other characters had to wait until the 1950s, when Hoppy and his friends came thundering through.

After Aladdin's salute to Hopalong Cassidy, the next King of the Cowboys to saddle up was Roy Rogers. The "Roy Rogers" lunchbox came courtesy of Aladdin's main competitor, "King-Seeley Thermos" (known today as Thermos L.L.C.). In 1953, King-Seeley sold 2 1/2 million "Roy Rogers" lunchboxes.

The increased popularity can be traced to the vivid, full-color lithographed images on every side of the lunchbox, starring not only Roy, but also Dale Evans and Trigger. (The 1950 "Hopalong Cassidy" lunchbox was a single color, with a Hoppy decal on one side.) By 1954, Aladdin had also switched to fully-illustrated, full-color lunchboxes, and Hoppy was upgraded.



Above: This vintage 1991 Peter Kull Hawaii solar eclipse t-shirt includes planets and the phrase "Totally Eclipsed in Hawaii." It is being offered on eBay by blackshirtsales of Midland, Ga., and viewed here <https://tinyurl.com/ys7yvp74>

Which popular figure appeared on which lunchbox was dependent on licensing. Aladdin acquired the rights to such prizes as the Disney, Marvel, and Star Trek characters. King-Seeley captured such in-demand properties as Star Wars, Peanuts, and Hanna-Barbera favorites including The Flintstones. Among other companies joining in with less prolific lunchbox output were ADCO Liberty, Okay Industries, Ohio Art, and Universal. From 1950 until 1986, over 200 million lunchboxes were sold. (The most popular: the "Disney School Bus" from the 1960s, with

nearly 10 million purchased.)

The phase-out of metal lunchboxes in the mid-1980s can be traced in part to parental fears (often unsupported) that the boxes were being used as weapons. A more likely explanation is that the preferred replacement, mold-made plastic lunchboxes, with all-plastic "thermos bottles," were cheaper to produce. And, as backpacks/book bags became the favored carryalls for school supplies, even the plastic boxes began to vanish. Smaller and softer packaging that could be maneuvered into a backpack became the norm. The last mass-produced metal lunchboxes were 1985's "Rambo" from King-Seeley, and Aladdin's "Thundercats" in 1986.

Mark Kelehan of Elkhorn, Nebraska, brought his lunches to school in a paper bag. Now though, the avid collector has over 1,200 lunchboxes in his collection, along with a massive assortment of related artifacts and reference materials.

"In 1994, I went to a flea market in Omaha, and saw a 1980 'Pac-Man' lunchbox, and thought it was super cool, even though it was a little beat up,"

Kelehan said. "It reminded me of a lot of things from my child-

hood. After I bought that lunchbox, I was curious to know what others there were, so I found a lunchbox price guide. When I saw how many were actually made, it kick-started my interest in buying more. I would go to flea markets, antique malls, and garage sales, and just bought basically whatever I could that was within my geographic reach.

"When eBay arrived, it became much easier to find lunchboxes. During my time in New York, I started going to toy shows, and meeting collectors who had other things like production art and production plates. That started me on this journey to go deeper than just the lunchboxes. The other things were more challenging and exciting, like finding former employees who had the artwork, or finding collectors who bought prototype lunchboxes that were rare one-off things. I love hunting down this kind of stuff. It helps me better understand the companies, and the history of lunchboxes. It's exciting, and I meet new people along the way."

One of those new peo-

ple was Robert Jones, a former illustrator for Aladdin Industries, and many of its lunchboxes. Now included in Mark Kelehan's collection is Jones's original concept art for that 1980 "Pac-Man" lunchbox.

Recently, Kelehan's collection was the focus of The Lunchbox: Packed With Pop Culture, a major exhibit at The Durham Museum (a Smithsonian affiliate) in Omaha, Nebraska. Notes Kelehan, "There have been several displays of lunchboxes at various museums, but there has never been an exhibit that displays all the one-of-a-kind paintings and original production artifacts." Kelehan's exhibit, which he created with support from The Durham Museum, featured over 500 of his lunchboxes, as well as numerous examples of lunchbox art and production materials.

In addition to detailing the history of lunchboxes, their major manufacturers, and their vibrant artwork, Kelehan's writings for the exhibit cover primary factors in their development. Among them: marketing research,

license acquisition, actual lunchbox production, and, of course, the world of lunchbox collecting, from its origins in 1979 up to the present day. Future goals, already in the works, include having the exhibit travel to other venues across the nation, plus one or more books on lunchboxes. Says Mark, "I think the topic and insights are timeless. Lunchboxes are a great reflection of history and popular culture in the United States. They all tell stories."

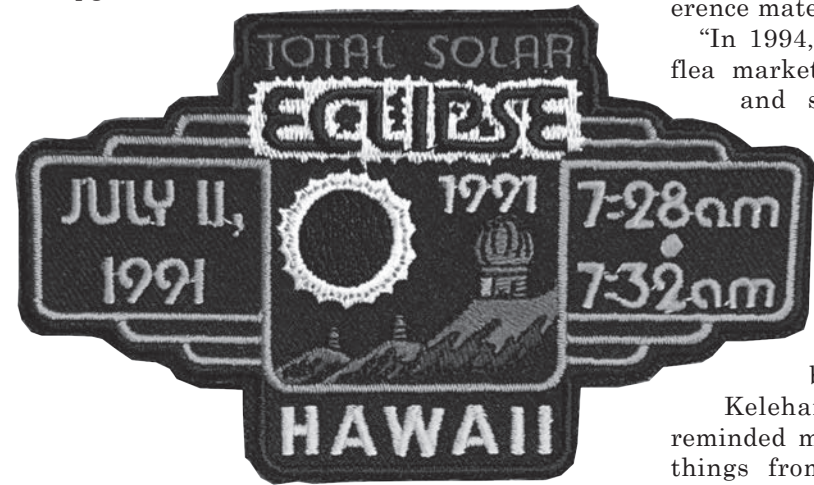
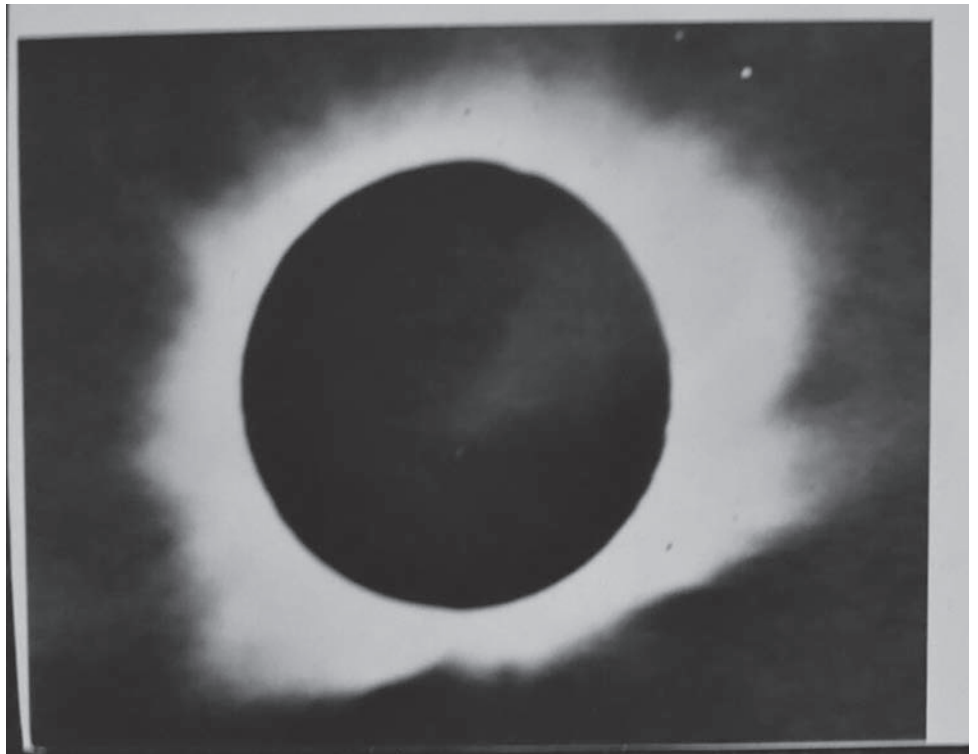
Fortunately for collectors, 200 million lunchboxes means there are still plenty around to collect. And there are boxes for every budget.

All photos and reference materials courtesy of Mark Kelehan, ([mak.lunchbox@gmail.com](mailto:mak.lunchbox@gmail.com))

Photo Associate: Hank Kuhlmann

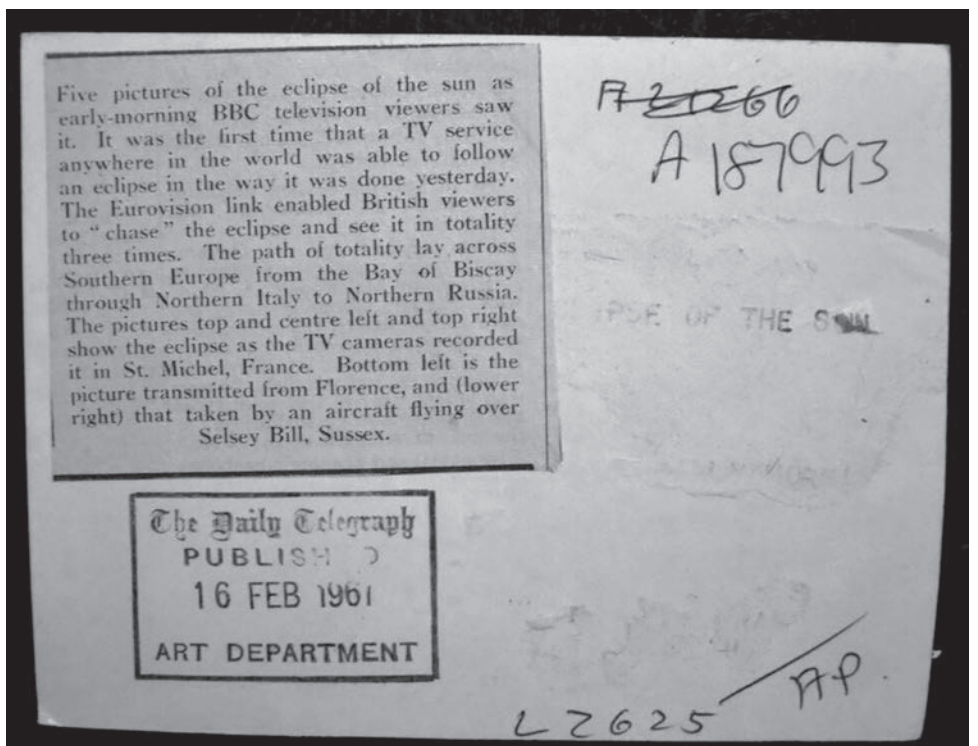
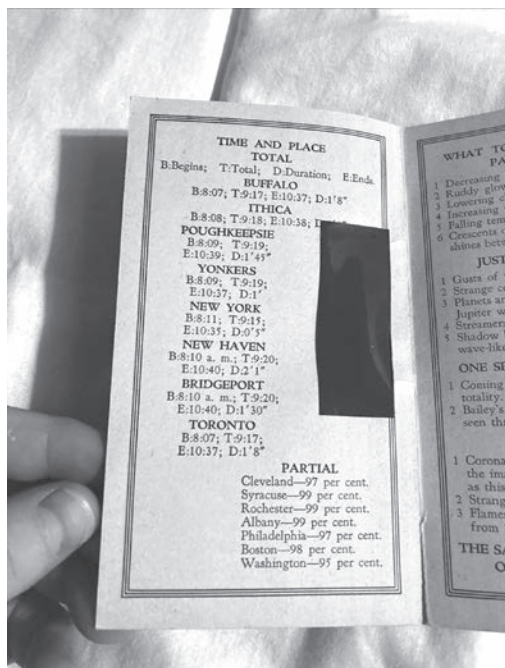
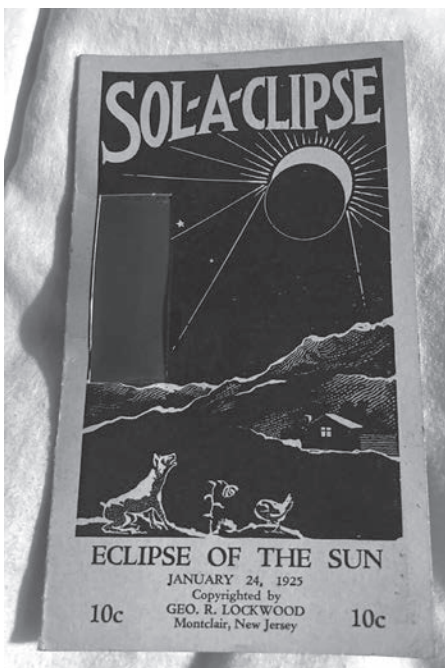
Donald-Brian Johnson is the co-author of numerous books on design and collectibles, including "Postwar Pop," a collection of his columns. He lived near the school, so usually went home for lunch. Please address inquiries to: [donaldbrian@msn.com](mailto:donaldbrian@msn.com)

Below: A gelatin silver print press photograph used as source material by London's The Daily Telegraph of the 1967 total solar eclipse. It is for sale on eBay for \$40 plus shipping by Eldritch Oculum [www.eldritchoculum.com](http://www.eldritchoculum.com). The image can be viewed here <https://tinyurl.com/ycketufw>



Above: This solar eclipse patch for the 1991 solar eclipse visible in Hawaii included the actual time of totality in the Aloha State. View the patch on eBay here <https://tinyurl.com/45kc52xx> The patch is offered by eBay seller Gravity Goods of Aumsville, Oregon.

Below: Offered for \$125 on eBay, North Country Pins and Paper of Lake Placid, NY, was this solar eclipse booklet titled "Sol-A-Cclipse" that was dated January 24, 1925. It can be viewed here <https://tinyurl.com/ms6p9845>



FLEA MARKETS • ANTIQUES  
EDUCATION • WANTED  
COLLECTIBLES • SERVICES  
ANTIQUES SHOPS • SHOWS

FLEA MARKETS • ANTIQUES  
EDUCATION • WANTED  
COLLECTIBLES • SERVICES  
ANTIQUES SHOPS • SHOWS

# CLASSIFIEDS

### ANTIQUES

**DAVAL'S USED FURNITURE & ANTIQUES.** 6 buildings with 15,000 sq ft of quality furniture, antiques and collectibles. SAVE TIME AND MONEY. SHOP DAVALS FOR THE BEST SELECTION, BEST QUALITY, BEST PRICE. YOU HAVE TO SEE IT TO BELIEVE IT. We are truly a destination place and worth the drive. WE BUY ESTATES. Layaway terms available. Visa/MasterCard/Discover accepted. 2 miles W. of Hastings at 2084 W M-43 Hwy near Bob's Gun & Tackle. Hours - Sun: 12-5; Mon-Fri: 10-6; Sat: 9-5. (269) 948-2463 S

### SERVICES

**MIRROR RESILVERING:** Quick Service. 313-521-1888. Frank Wright Glass, 14808 Gratiot. Detroit, MI 48205. Call for quotes. www.frankwrightglass.net S

**Be Sure To Say, "I Saw It In The Auction Exchange & Collector's News!"**

### WANTED

**WANTED:** Always buying rare antique motors. Outboard and inboard also early race boats. E-mail: bjoutboards@gmail.com 989-326-0727 B.J. Pawlaczyk S  
**WANTED:** Buying license plates. Singles or collections. Call Jeff 269-447-7634 or Email @ dehaanjeffrey@yahoo.com (0424)

**WANTED:** Buying old lead metal toy soldiers and vehicles collections 1920-1960. Top dollar paid. Contact Steve natbla@aol.com, 703-608-2249 (2224)

**WANTED**

**Antique Riding Bitt**



No. 2 Size: 10" W x 10" H  
Galv. Cast Iron  
(610) 940-2668 (41-24)

### VENDORS

**Free booth space available @ our annual antique advertising specialty show March 15, 2025. Located at the Indiana State Fairgrounds, Indianapolis. This is one of the largest markets for only 40+ year old advertising in the world. Signs, displays, clocks, and all other forms of vintage advertising.**

For info: IAAshow.com  
Contact: damongranger@gmail.com S

**STAY ALERT!  
BE AWARE!  
Auction Advertising  
Is Everywhere!**

**Denotter Auctions**  
Weekly Online  
Estate and Consignment Auctions  
Antiques, Collectibles, Vintage  
[www.denotterauctions.com](http://www.denotterauctions.com)  
224-392-3101



With the best coverage around, how can you afford *not* to advertise?

**The Auction Exchange & Collectors News**

## Buying? Selling? Promoting?

### TRY AN AUCTION EXCHANGE CLASSIFIED!

**Classified ads are limited to Antique Shows & Shops, For Sale, Services, Education and Want Ads. • No auction ads or tag sales.**

An Auction Exchange classified ad is only \$6.25 per week for up to 15 words and 25¢ for each additional word.

*Please print legibly and include name, address or phone number & town as it will appear in print.*

Name \_\_\_\_\_

Street \_\_\_\_\_ City \_\_\_\_\_

State \_\_\_\_\_ Zip \_\_\_\_\_ Phone \_\_\_\_\_

CLASSIFICATION: (i.e. Wanted , For Sale) \_\_\_\_\_ Please run my ad for \_\_\_\_\_ weeks.

**YOUR AD, AS IT WILL APPEAR**

\$6.25

\$7.50

\$8.75

\$10.00

\$11.00

\$12.25

All classified ads must be pre-paid

Please send ad with check made payable to The Auction Exchange • PO Box 90 • Knightstown, IN 46148-0090

# GRAYSLAKE ANTIQUE & VINTAGE MARKET™

2024 Market Schedule:

March 9 & 10 • April 13 & 14

**Oct. 12 & 13 • Nov. 9 & 10**

December 14 & 15

Antiques • Collectibles • Jewelry • Furniture • Vintage & More!

General Admission:  
Saturday 9am - 4pm  
Sunday 9am - 3pm / \$8  
Early Buyers:  
Saturday 8am - 9am / \$25

Lake County Fairgrounds  
1060 E Peterson Rd,  
Grayslake, IL 60030



instagram.com  
/zurkopromotions



Like us on  
**Facebook**  
facebook.com/  
GrayslakeAntiqueMarket

NEW DEALERS WELCOME!  
Call 715-526-9769 for info.

WWW.ZURKOPROMOTIONS.COM

## For Sale

Established Antique & Vintage Collectible Store

Completely turnkey with the reputation for selling quality antiques for the past (4) years.

Includes:

- All Inventory
- (20) Lighted, Glass, Locking Show Cases for Added Vendors
- Divided Floor Space for Additional Vendors
- Assumable Lease
- Or Contents Only

- Located at the intersection of two high traffic, major roads in Southeast Michigan (US-23 Expressway and M-59)
- Affluent population - Centrally located Large Cities & Smaller Towns of Southeast Michigan

Google

9520 Highland Rd. • Howell, MI 48843

Hartland Area - 3/4 of a mile West of US-23 on M-59

For More Information Call or Text  
Paul V. Johnson - 517-294-9152



## Shipshewana Auction

### ANTIQUe & MISCELLANEOUS AUCTION

Every Wednesday, Year-Round at 9:00 am EST



The items pictured above will sell in our April 3rd Antique & Misc. Auction

Preview consignments at AuctionZip.com! Auctioneer ID #1945

We have seller space available. Call (260) 768-4129 to consign items!

www.ShipshewanaTradingPlace.com • (260) 768-4129 • 345 S Van Buren St, Shipshewana, IN 46565

## MONROE COUNTY COMMUNITY COLLEGE & SAUER FURNITURE & ANTIQUES

proudly present...

Authentic Antiques & Genuine Collectibles

# ANTIQUES

Door Prizes

2024

Food Concessions

# IN APRIL



SATURDAY

**April 20**

9 a.m. to 5 p.m.

SUNDAY

**April 21**

10 a.m. to 4 p.m.



MONROE COUNTY COMMUNITY COLLEGE

enriching lives

Admission **\$3**

Free Parking • Handicap Accessible

For information contact ~

William Wilt OR Norm Sauer  
(734) 457-6026 (734) 242-6284

Monroe County Community College

Welch Health Education Building  
1555 S. Raisinville Rd., Monroe, Michigan  
3 miles west of Telegraph Rd. between Dunbar & M-50