

THE AUCTION EXCHANGE[®] And COLLECTORS NEWS[®]

\$150

ANTIQUES • COLLECTIBLES • ESTATES • FARM • REAL ESTATE • COMMERCIAL

www.eauctionexchange.com

November 1, 2022

Vol. 45 No. 47

ACROSS THE AUCTION BLOCK

Bell rang \$3,000 at Braun & Helmer auction

BY WILLIAM
FLOOD

TIPTON, Mich. — On Oct. 8, Braun & Helmer Auction Service held an outstanding sale of Great Lakes maritime artifacts, art, and antiques. Pieces came from the lifetime collection of Captain Steven Welch of Sault Ste. Marie, Mich., former owner of the Original Soo Locks Boat Tours Company.

Nearly 300 lots were offered, many containing

artifacts from Great Lakes shipwrecks salvaged by wreck diver James P. Mularkey (1931-2017). Many of the larger artifacts were stored in custom crates, awaiting the fruition of Welch's dream of opening a maritime museum.

With that museum in mind, Welch ensured salvaged items complied with the 1988 "National Abandoned Shipwreck Act" and Great Lakes salvage statutes. To that

end, he retained recovery correspondence, and salvage lots came with supporting documentation.

Beyond marine salvage, there were also pieces of Great Lakes steamship art, freighter models, naval uniform articles, and maritime ephemera such as ships' documents, steamship postcards, and timetables.

Of particular significance were three-dozen lots containing intact

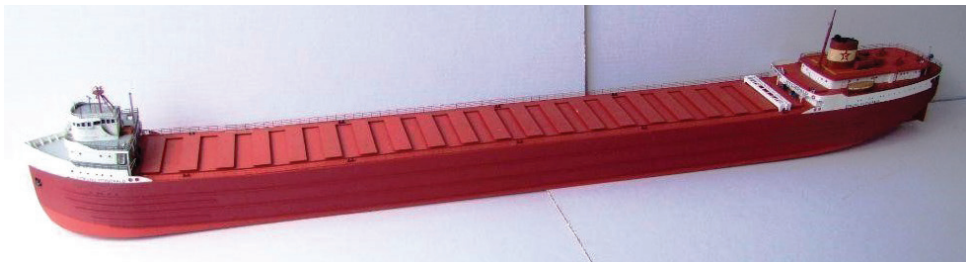


Above: Several articles from Great Lakes maritime uniforms were for sale. This 1960's Royal Yacht Officers cap went for \$80.

nautical antiques. One of those items — a 31 inch three-chime brass steam whistle — secured the auction's highest bid of \$3,900. The Crosby model KA110 was manufactured around 1928 and was purportedly the whistle from the Ann Arbor railroad car ferry



Above: This brass ship's bell (\$3,000) was salvaged from the S.S. Philadelphia, which sank in Lake Huron in 1893.

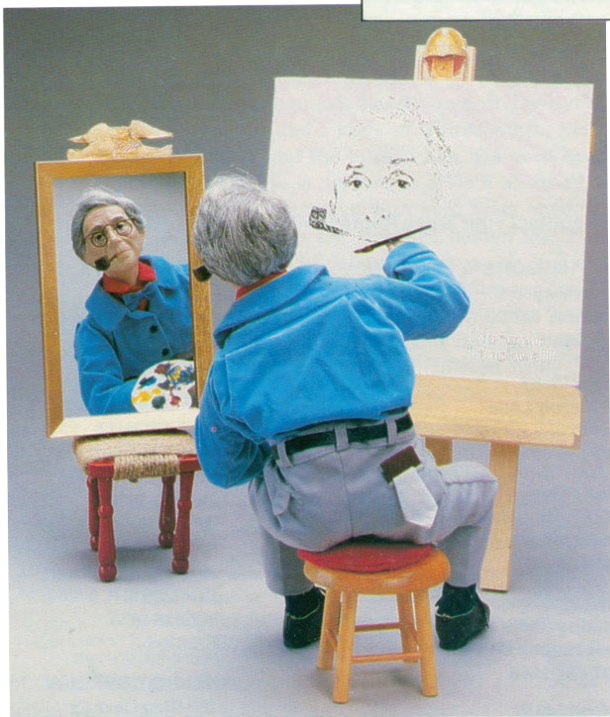


Above: A 62-inch model of the storied Edmund Fitzgerald sold for \$1,633.

See Braun page 4

FEATURE

"Triple Self Portrait" premiered on the February 13, 1960 cover of the Saturday Evening Post. It remains, perhaps, Rockwell's best-loved illustration and, now, porcelain doll.



Norman Rockwell dolls bring smiles

BY LARRY
LEMASTERS

Norman Rockwell, America's most beloved 20th century illustrator, is famous for his depictions of daily life in small town America. The world he showed us is populated with friendly policemen, Boy Scouts, children, families, dogs, and smiles. Most of the smiles come from us — his fans. Asked why he painted what he did, Rockwell replied, "I'm not a historian. I just painted the things I saw around me. I was showing the America I knew and observed to others who might not have noticed it as I did. I painted life as I would like it to be."

Today, many people collect Norman Rockwell illustrations; although only a select and wealthy few have his original paintings. Since his death on November 8, 1978,

many of Rockwell's most cherished illustrations have been duplicated as porcelain dolls or figurines. Today, the best of these dolls are highly collectible.

So, how does one start a Norman Rockwell doll and figurine collection? Well, it's really very easy, inexpensive, and does not have to take a lot of time. All you necessarily need is a lot of passion. And once you possess just one of Rockwell's timeless beauties, the passion soon follows.

A number of companies manufactured Rockwell figurines in the last 30 years, but among the best in quality and detail are the 1985 Norman Rockwell porcelain doll creations offered by Signature Collection.

Those of you that have collected porcelain in the past know why it stands out from figurines made from all other kinds of



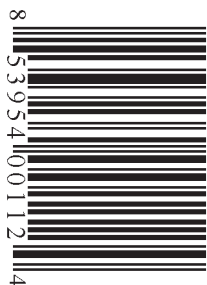
Above: From 1978, Dave Grossman Designs offered this Norman Rockwell "Doctor and Doll" porcelain figurine.

materials. It is literally quite easy to fall in love with porcelain figurines; Rockwell's porcelain dolls may be the most desirable.

All of Signature Collection Rockwell porcelain dolls are crafted with an

incredible attention to detail and hand-painted delicately to achieve a truly life-like appearance. If you are looking for a figurine with lots of deli-

See Rockwell page 12



SINCE 1978 THE WEEKLY AUCTION & COLLECTORS
GUIDE FOR THE GREAT LAKES REGION



POLLEY

EQUIPMENT SALES
& ONLINE AUCTIONS



Call or Text: 765.737.0744
Email: polleyequipment@gmail.com
Visit www.polleyequipment.com Today!



2005 JD 9860STS 4WD, contour, single point, 125/45-32 drive tires, 4,160/2,617 hrs\$59,500 (IN)



1996 JD 893 8-30", hyd. deck plates, height sense, stalk stompers, single point.....\$10,900 (IN)



2015 JD R4038, 120' booms, 1000 gal. SS-tank, 2,473 hrs\$200,000 (KY)



Hiniker 1700 stalk copper, 20', small 1000 PTO, newer knives and all hardware\$10,900 (IN)



1979 JD 4640, quad, hub duals, 1000 PTO, QH, 3 hyd., weights, 7644 hrs\$28,900 (IN)

Simple Ways to Sell Your Equipment!

Retail - Low Flat Rate To Market Equipment
Auction - Online Auctions That Get Results
Wholesale - We Buy Your Equipment



JD 4830, 100' booms, 1000gal. SS-tank, 1,904 hrs\$115,000 (KY)



JD 2700 5 bottom variable width plow, coulters, gauge wheel\$2,250 (IN)



8 row 30" cultivators, rolling fenders, flat fold.....\$1,250 (IN)



2013 Krone Swadro 1010 rotary rake, 2-pt hitch\$24,000 (KY)



1948 JD B, gas, rear hyd., 540 PTO, new tires.....\$4,500 (IN)



M&W 400, ext. hitch, 16.5-16.1 tires, dual compartment 400+ bu.....\$3,250 (IN)



2006 Ag-Chem Terragator 8104, 70' air booms, 4,771 hrs.....\$14,500 (KY)



2008 JD 2305 MFD, hydrostat, diesel, 1,200 hrs., 3 pt., 540 PTO, mid hyd. & PTO\$5,450 (IN)



2000 Freightliner FLD120, Detroit Series 60, 10 spd. trans., 578,990 mi.....\$42,900 (IN)



JD 6600, diesel, hyd. fold auger, chopper, newer interior.....\$2,950 (OH)



Killbros 385, Killbros 1386 gear, 11R22.5 truck tires, 20" ext.....\$2,950 (IN)



Case IH Tigermate II, 32' rear hitch, 4 bar tine, gauge wheels\$21,500 (IN)



New Holland 1465, 9' cut, rubber rolls, good sickle, 540 PTO\$6,950 (IN)



Woods 360, quick attach bucket, come off JD 4630 2WD tractor\$4,500 (IN)



Miller Pro 7916 hay merger, hydraulic driven . \$7,500 (KY)



Killbros 350 gravity wagon, JD gear, 11L-15 tires..\$1,150 (IN)



2011 JD 635F, 35', full finger, single point, Lankota dividers, stainless floor.....\$15,500 (IN)



JD 7200 6-30", no-till, liquid, insect, vac.....\$8,000 (KY)



Wil-Rich 14 shank chisel, 3pt, spring shank, rear hitch, gauge wheels\$1,750 (IN)



Glencoe 20' field cultivator, 5 bar spike, rear hitch, 7" knock on's.....\$1,750 (IN)



Landoll Weatherproofer 6 shank ripper, 5 bar spike, walking tandems.....\$6,500 (IN)

SELL YOUR EQUIPMENT IN THE
YEAR-END AUCTIONS

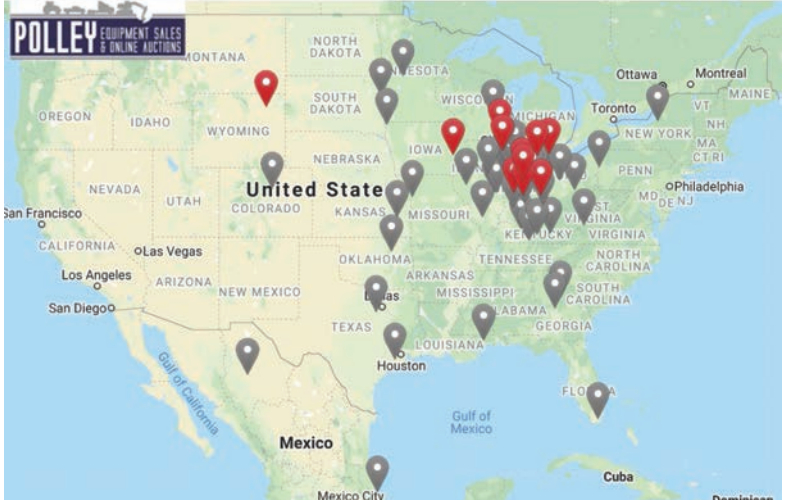


2021
\$941M+ Sold on AuctionTime
107,000+ Assets Sold | 4.4M+ Total Bids
December Auctions 2021
• \$188M+ • All 10 Canadian Provinces
• 15,100 Assets • 55 Countries Worldwide
• 27,000 Bidders • All 50 States

Don't Miss The Biggest Events of The Year

CALL TODAY!

Sold with AuctionTime



Map of auction results from one of our past Online Auctions showing Bidders and Buyers from all over the country and beyond.

RETAIL SALES



1988 IH 9300, Cummins, 9 spd.
SOLD IN 5 DAYS



2014 Ford F350 SD Lariat King Ranch
SOLD IN 12 DAYS



2001 JD 1780 6-11
SOLD IN 7 DAYS



2011 JD 9670STS
SOLD IN 37 DAYS



1978 JD 4640 with 6,092 hrs.
SOLD IN 7 DAYS



1941 Farmall H
SOLD IN 49 DAYS



New Holland 316, wire tie
SOLD IN 18 DAYS



DMI Crumbler 28
SOLD IN 5 DAYS

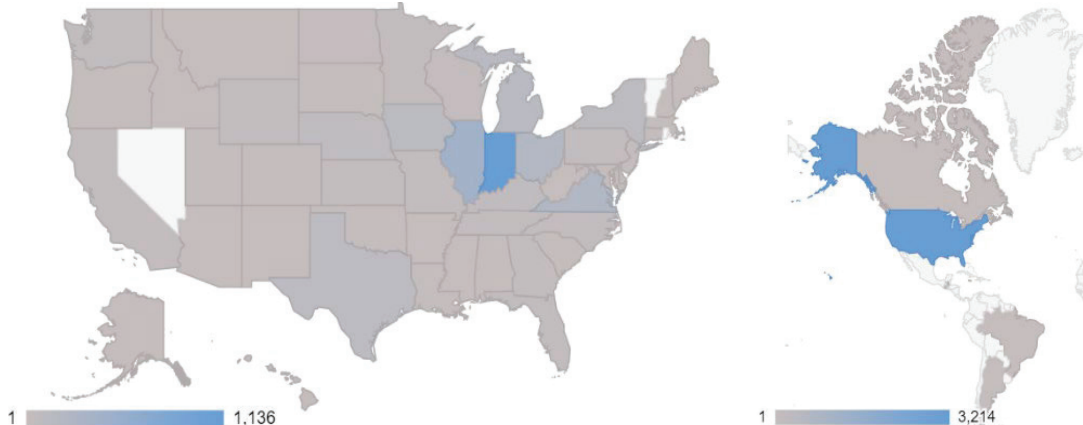


1957 Oliver Super 77
SOLD IN 39 DAYS



1994 IH 4900
SOLD IN 14 DAYS

BUYERS FROM ALL OVER THE WORLD!!!



FarmWorld  **MACHINERY PETE**

Why Polley Equipment, LLC?

- With two decades' worth of farming and equipment experience and over 10 years in equipment sales—and counting—we have the knowledge to help you get the best value out of your equipment.
- Attention to the details with quality pictures and videos
- We work with some of the largest names in equipment marketing
- We are here to take the stress and burden out of selling equipment.
- We conduct a full-service marketing campaign for your equipment

Visit www.polleyequipment.com Today!

Call or Text: 765.737.0744
Email: polleyequipment@gmail.com
Shirley, IN



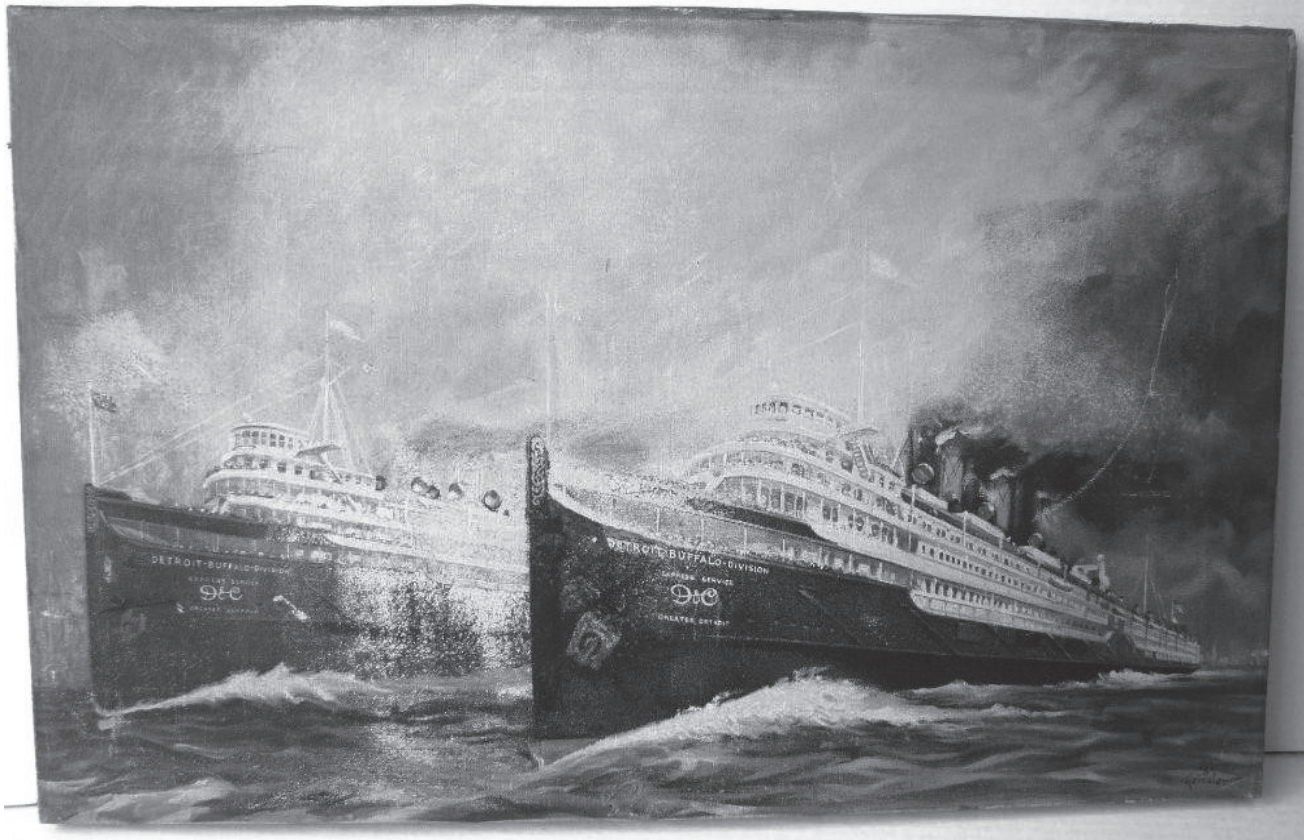
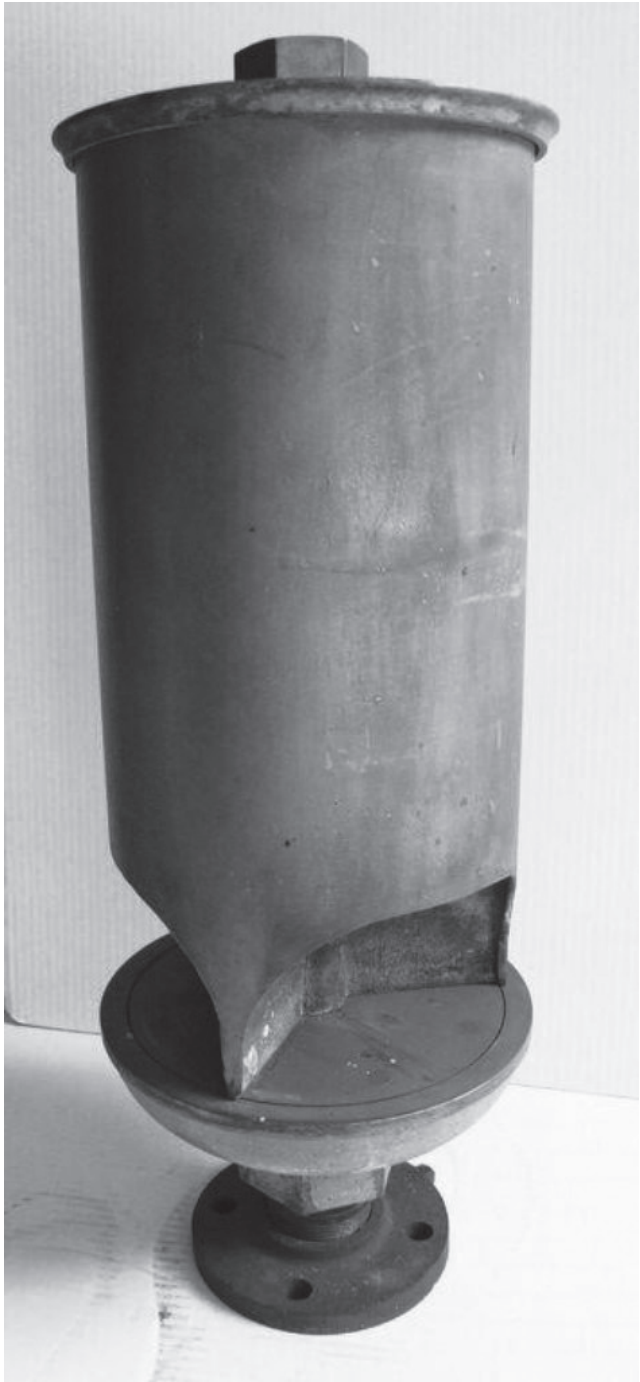
POLLEY EQUIPMENT SALES
& ONLINE AUCTIONS

Braun

FROM PAGE 1

S.S. Wabash which ended service in 1963. The whistle was in overall good condition with only oxidation and minor dents. It was supplied with a custom plywood crate.

Ringed up \$3,000 was another fine nautical antique, the 18-inch bronze ship bell from the S.S. Philadelphia, which sank in Lake Huron in 1893 after colliding with another vessel. The bell retained its mounting bracket and clapper, yet had some chipping and rust and was previously cleaned. It also had a cus-



Above: Numerous lithographs depicting the heritage of Great Lakes shipping were available. This one of two D&C cruise ships sold for \$200.

tom plywood crate.

A brass pilothouse telegraph from an unidentified Great Lakes steamship bid to \$2,600. The 50-inch control was made by Sig Transportation, Inc. of Amesbury Massachusetts. The piece was in previously polished condition with some paint removal.

Artifacts salvaged from wrecks held a special fascination. A bronze builder's plate from the S.S. Monrovia grabbed \$1,100. The English cargo ship, built in 1943, sank in Lake Michigan in 1954 after colliding with another vessel. The undamaged plate was inscribed, "Rankin & Blackmore

Ltd., Eagle Foundry, Greenock. Eng. No. 489 - 1943."

Another bronze builder's plate, selling for \$500, came from the S.S. Panther, a 237-foot wooden-hull steamer built in West Bay City Michigan in 1890. The steamer sank in Lake Superior in 1916 after colliding with another vessel. The plate was previously sandblasted and cleaned, leaving some bottom lettering damaged.

A brass porthole from the freighter S.S. Cedarville garnered \$2,100. The bulk carrier was built in Michigan in 1927 by Great Lakes Engineering. It sank en route to Gary, Ind., in 1966 after colliding with another vessel in dense fog. The 19-inch porthole was salvaged by James Mularkey in 1966 and had provenance to a Saugatuck estate. While the glass was significantly fractured, it retained around 80 percent of its original paint.

For just \$20, one bidder acquired an iron spike recovered from the S.S. John Osborne. The 178-foot steam barge was built in 1882. Two years later, it was hit by another vessel in dense fog and went down in Lake Superior. Four lives were lost.

From the cabins of multiple Great Lakes vessels came hundreds of pieces of tableware and flatware. Among them was a rare 19th-century Michigan Central Railroad North Shore Line ironstone plate salvaged in 1974 from the wreck of the steamer Pewabic. Built during the Civil War, the steamer collided with its sister ship the Meteor in 1865, losing 35 passengers. Although severely stained and crazed from decades underwater, bidding on the plate climbed to \$800.

Left: A brass steam whistle from the car ferry S.S. Wabash won the auction's highest bid of \$3,900.



Above: Several builder's plates were offered. This one, from the S.S. Panther which sank in Lake Superior in 1916, sold for \$500.

A set of four bullion cups from the White Star Line steamship Tashmoo sold for \$175. The paddle-wheeler was launched by the Detroit Shipbuilding Company in 1900. She sank in 1936 after striking a rock while returning to Detroit from an evening excursion. The collection showed normal wear but no chips or cracks. Also from the Tashmoo, selling for \$150, was a 13-inch ironstone platter with only minor wear.

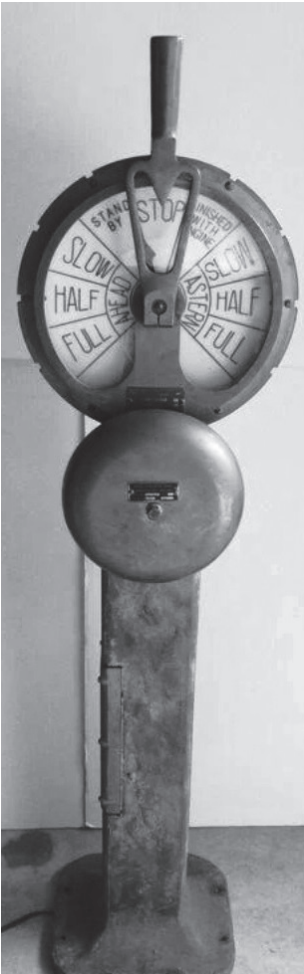
Five lots housed museum-size ship models. A bid of \$1,677 won the 62-inch hand-built and hand-painted model of the Edmund Fitzgerald, made famous by Gordon Lightfoot's song commemorating the 1975 wreck. Similarly impressive was the \$1,600 bid for the 50-inch replica of the S.S. Arthur M. Anderson, the cargo ship that had the last contact with the Fitzgerald before she sank.

Fans of Great Lakes maritime art chased a dozen framed and unframed lithographs often portraying Great

Lakes shipwrecks. A framed 1996 color lithograph entitled "Also Searching" went for \$250. The numbered limited edition by artist Mary C. Demroske portrayed the William Clay Ford searching for survivors of the Edmund Fitzgerald and featured the signature of the Ford's captain, Dale Lindstrom. Also selling for \$250 was a pair of unframed 28 by 22 inch color lithographs from 1995. One, "Passage in the Moonlight," depicted the Edmund Fitzgerald in calm waters. The other, "Every Man Knew", portrayed the freighter in rough seas just before sinking. Each was signed by marine artist David Conklin and singer Gordon Lightfoot.

Over 100 lots of ephemera presenting the history of Great Lakes shipping and travel filled the auction. A pair of three-ring binders containing 472 postcards of the Soo Locks and Sault Ste. Marie reached \$250. A good-condition, circa 1920s C&B Line promotional brochure for the S.S. Seeandbee (converted to military use in World War II), sold for a noteworthy \$175. A 10-piece Northern Steamship Company collectors' lot with an 1896 schedule, a 1900 promotional booklet, and a 1909 Northland steamship schedule, among other items, also drew \$175.

For information on upcoming Braun & Helmer auctions, go to: braunandhelmer.com



Above: This pilothouse telegraph from an unidentified freighter sold for \$2,600.



Above: This 1920s brochure for the Great Lakes cruise ship S.S. Seeandbee sold for \$175.



Above: A set of cups from the excursion ship Tashmoo sold for \$175.

ORDER FORM

SUBSCRIPTIONS

SAMPLE

THE AUCTION EXCHANGE

And COLLECTORS NEWS®

PO Box 90, Knightstown, IN 46148-0090

Phone Toll Free (888) 339-3795, x134 • Fax (877) 223-3778

info@eauctionexchange.com

NAA

Auctioneer

ILLINOIS

AUCTIONEERS

IAA

INDIANA AUCTIONEERS ASSOCIATION

OAA

OHIO AUCTIONEERS ASSOCIATION

☐ Free Sample Copy of *The Auction Exchange & Collectors News*
(One free sample per address per year)

SUBSCRIPTIONS: ☐ New Subscription ☐ Renewal

☐ \$34⁰⁰ for 1 year (51 issues)

☐ \$61⁰⁰ for 2 years (102 issues)

☐ \$88⁰⁰ for 3 years (153 issues)

Total enclosed: \$.....

Name.....

Address.....

City.....State.....Zip.....

Phone (.....).....Email.....

This is a gift, please send a postcard announcing the gift subscription

From

I read *The Auction Exchange* for:

☐ Auction reviews

☐ Articles

☐ Advertising

☐ Other

Mail this completed form with payment to: **PO Box 90, Knightstown, IN 46148-0090**

CREDIT CARD ORDERS: 800-876-5133

Tony GregoryPublisher

Lorri Egan Publication Mgr./Advertising

Connie Swaim.....Managing Editor

Tari True Pre-press Manager

Auction Exchange and Collectors News
Published weekly except one week in December
(51 issues) and mailed every Thursday
ISSN: 0279-0950
Published by MidCountry Media, Inc.
27 N. Jefferson St., PO Box 90
Knightstown, IN 46148
Periodicals postage paid at Knightstown, Indiana

Subscription price: \$34.00 for one year
\$61.00 for two years; \$88.00 for three years

POSTMASTER:
Send address changes to:
The Auction Exchange and Collectors News
PO Box 90
Knightstown, IN 46148-0090

SUBSCRIBERS:
We print the advertisements as sent to us by
the auctioneer. It is not possible to check the
correctness of the listed items, *so before
traveling a long distance for a particular item,
contact the auctioneer first by phone.*

Publishers Emeritus:
John Armstrong, Randy Barz,
Judy Huxmann, Lars Svendsen

Reproduction in any form is prohibited without
the written consent of the publishers.
ALL RIGHTS RESERVED.

POSTAL REPORT

Without fail for 42 years, The Auction Exchange & Collectors News
has been delivered to the USPS by 5 pm every Friday.

Currently we are delivering the newspaper to the USPS by midnight Thursday.
Despite this early entry into the postal stream and our vociferous lobbying at all levels
of the USPS, we are experiencing delivery problems in the following area:

South Lyon, MI

If you don't receive a paper by Tuesday's mail, you may call us to have a paper sent
first class.

If it is after normal business hours, please call 800-876-5133 ext. 135.
Please also call your Post Office to report your late delivery.

GENERAL ADVERTISING INFORMATION

DEADLINE IS WEDNESDAY AT 12 NOON

Unless otherwise noted

ADVERTISING SIZES AND RATES

1/8 page (5"Wx4"H) - \$83.80

1/2 page (10¼"Wx8"H) - \$315.56

1/4 page (5"Wx8"H) - \$157.77

Full page (10¼"Wx16"H) - \$546.15

Call for additional sizes and rates 888-339-3795

Open Rate

Our open rate is calculated at \$7.33
per column inch. Call for more
information about our Low Cost
Standard Open Rate (\$6.98/col.")
which is based on a minimum of 10
point type in the body copy.

Display Advertising

Each page is six columns wide (10-
1/4 inches) by 15-1/2 inches high.
Each column is 1-5/8 inches wide.
We use a minimum of 10 pt. type (for
body copy) for purposes of readabili-
ty, and specific point sizes for head-
ing (24 pt.), date (18 pt.), city/state
(16 pt.) so please keep this in mind as
you plan your ad. We typeset your ad
to fit our specifications while keeping
in mind your requirements and the
need to minimize the cost of your ad.

Back Cover Ads: (Non-auction
ads only.) Back cover ads are booked
in advance by reservation - call for
availability.

Deadlines/Sending Copy: Our
deadline is 12 noon on the
Wednesday before the issue date,
(Monday). All material must be
received by this time, including pho-
tographs. (Call for holiday sched-
ules.) A 10% surcharge will be
added to display advertising received
Wednesday between 12 Noon and
3:00 p.m. We cannot always guaran-
tee insertion of late ads. In all cases,
it's a good idea to call and notify us
that an ad is being sent, and to con-
firm that your ad has been received.

Mail Your Copy: 27 N. Jefferson
St., Knightstown, IN 46148. First
class mail may or may not be deliv-

ered by deadline if you mail on
Monday or later. If you mail on
Tuesday, send by **U.S. Express
Mail, UPS Next Day** or other "next
day" services.

Fax Your Copy: You may fax your
ad to us at: **877-223-3778.**

E-Mail: Please send "Text Only"
format, we cannot use files that have
been saved in their native software.
Email address:
info@eauctionexchange.com

Photos: should be sent in JPG for-
mat, as attachments to E-mail. We
accept color, or black and white.

Accuracy: Every effort is made to
ensure the accuracy of your finished
ad. Sending it to us well in advance
is essential in allowing adequate
time for proofing and faxing layouts
to you for approval. We assume no
guarantee or liability concerning the
accuracy of published advertise-
ments.

ISSUE DATE

DEADLINE
(NOON)

NOVEMBER 8. . . . WED., NOV. 2

NOVEMBER 15. . . . WED., NOV. 9

NOVEMBER 22. . . WED., NOV. 16

NOVEMBER 29. . . TUES., NOV. 22

DECEMBER 6. . . . WED., NOV. 30

DECEMBER 13. . . . WED., DEC. 7

DECEMBER 20. . . WED., DEC. 14

DECEMBER 27. . . TUES., DEC. 20

THE AUCTION EXCHANGE

And COLLECTORS NEWS

ZONE MAP

This zone map is a
feature of *The Auction
Exchange & Collectors
News* and is designed to
make it easier for you to
locate events throughout
the region.
You will find the Zone
symbol following the city
and state in the heading of
each ad.
This symbol will corre-
spond to the zone map
shown here.

UPCOMING AUCTION CALENDAR

JANUARYFEBRUARYMARCHAPRILMAYJUNEJULYAUGUSTSEPTEMBEROCTOBERNOVEMBERDECEMBER

The Upcoming Auction Calendar is a listing of future Auctions beyond the current week.

Auctioneers: This service is provided at no charge. As with everything - we do our utmost to make sure that your Auction is listed in a timely and accurate fashion.

For our Readership: For more thorough listings contact the Auctioneer personally and tell them where you saw their ad!

ZONE 2

Sat., Nov. 5, Ron Ringel Auctioneer, Miscellaneous, Onekama, MI

ZONE 3

Sat., Nov. 5, Yoder Bros Auction Service, Misc., Gladwin, MI

ZONE 4

Fri., Nov. 4, Stantons Auctioneers, Gun, Hastings, MI

Thu., Nov. 17, Stantons Auctioneers, 2-Day Music Machine, Hastings, MI

ZONE 5

Sat., Dec. 3, Miedema Auctioneering, Equipment, Hudsonville, MI

Sat., Nov. 5, White Star Auction, ATV, UTV, Misc., Bronson, MI

Sat., Nov. 5, Yutzy's Auction Service, Hay, Straw, Firewood, Charlotte, MI

Sat., Nov. 12, Jay's Auctions, Miscellaneous, Coldwater, MI

Sat., Nov. 12, Lyn Liechty Auctions, Farm Equipment, Brooklyn, MI

ZONE 6

Sat., Nov. 19, Yutzy's Auction Service, Hay, Straw, Firewood, Charlotte, MI

Sat., Dec. 3, Yutzy's Auction Service, Hay, Straw, Firewood, Charlotte, MI

Sat., Dec. 17, Yutzy's Auction Service, Hay, Straw, Firewood, Charlotte, MI

Sat., Jan. 7, Yutzy's Auction Service, Hay, Straw, Firewood, Charlotte, MI

Sat., Jan. 21, Yutzy's Auction Service, Hay, Straw, Firewood, Charlotte, MI

ZONE 8

Fri., Nov. 4, Chupp Auctions & Real Estate LLC, Wrench, Shipshewana, IN

ZONE 12

Sat., Nov. 5, Whalen Realty & Auction, Misc., Toledo, OH

Fri., Nov. 11, Whalen Realty & Auction, Furn., Glass, Toy, Neapolis, OH

Fri., Nov. 18, Whalen Realty & Auction, 2 Day, Neapolis, OH

ZONE PA

Wed., Nov. 16, Pook & Pook, Inc., Native American, Downingtown, PA

Thu., Dec. 1, Pook & Pook, Inc., Antique Toy, Downingtown, PA

LIST YOUR UPCOMING AUCTIONS FREE!

Day	Date	Auction Company	Type of Auction	Town	State

Mail to: The Auction Exchange & Collectors News

PO Box 90, Knightstown, IN 46148-0090

Toledo Blue Streak pedal car drove hard to \$1,700

GRAND LEDGE, Mich. — For more than 25 years Americana Auctions of Sunfield, Mich., has been celebrating the pre-holiday season with toy and vintage holiday auctions. This year was no exception. On a recent brisk October morning Americana's lead auctioneer, Glen Rairigh, stepped to the podium at the Grand Ledge Masonic Temple and began his familiar fast-paced rhythm. Glen began the auction at 10 am sharp, warming the audience up with vintage Halloween collectibles featuring a black cat pulp lantern that sold to a veteran collector for a reasonable sum of \$175.

For the next two hours Rairigh introduced antique windup toys and unique holiday collectibles from such notable German companies as Lehmann, Strauss, Issmayer, and Paya (Spain). Although the featured toys dated from the late 1800s to 1930s the majority of the items worked well, belying their age. Toys receiving the special attention included a 1930s "Toledo Blue Streak" pedal car drawing a top bid of \$1,700, Overland Band Wagon at \$350, Martin Waltzing windup couple at \$400, Lehmann "Heavy Swell" windup with box at \$900, and Vindex JD tractor at \$750.

During Rairigh's session at the microphone he presented a nice collection of antique music boxes that highlighted disc and cylinder players well known to the auction audience. A large (and heavy) polished nickel "Organ" 30-tune music box drew curious bidders who moved the bidding to a respectable \$500. A unique late-1800s "May Pole" manual carousel music box with three miniature Heubach dolls on horseback went to a Texas buyer for \$900. Rairigh concluded his presentation selling a collection of antique pocket watches, all in

See Americana page 7

Above: This Pedal car sold for \$1,700.

Above: "Buddy L" three-section station brought \$700.

Above: Lehman Zeppelin with box reached \$ 700

www.eauctionexchange.com



The Weekly Auction Calendar is provided as a service for our Advertisers and Readers. We make every effort to ensure accuracy of the calendar but always refer to the complete Ad to verify the Calendar information. Unless specified by the Auctioneer in writing we reserve the right to designate the 'Type' of Auction listing. © INDICATES THE AD APPEARS IN SECTION 2 OF THE PAPER

DATE	TIME	AUCTIONEER/SRV.CITY	TYPE	PAGE/SEC.
ZONE 2 MICHIGAN				

Sat., Nov. 5	9am	Ron Ringel Auctioneer	Onkama, MI	Miscellaneous	18
--------------	-----	-----------------------	------------	---------------	----

ZONE 3 MICHIGAN					
Sat., Nov. 5	9:30am	Yoder Bros Auction	Gladwin, MI	Farm Mach., Misc.	16

ZONE 4 MICHIGAN					
Wed., Nov. 2	10am	Stantons	East Leroy, MI	Estate	10
Thu., Nov. 3	Noon	Merritt Auction Svc.	Howard City, MI	Estate, RE	8
Fri., Nov. 4	8am	Stantons Auctioneers	Hastings, MI	Gun	10
Sat., Nov. 5	10am	Art Smith Auctions	Kent City, MI	Miscellaneous	3
Sat., Nov. 5	10am	Beyer Auction Service	Hesperia, MI	Miscellaneous	15
Sat., Nov. 5	10am	Vander Kolk's	Allegan, MI	Estate	20
Sat., Dec. 3	10am	Miedema Auct.	Hudsonville, MI	Equipment	18

ZONE 5 MICHIGAN					
Thu., Nov. 3	4pm	Spieth & Satow	Jonesville, MI	RE, PP, Misc.	14
Sat., Nov. 5	10am	Bos Auctions	Concord, MI	Antq., Coin, Furn.	3
Sat., Nov. 5	10am	Durocher Auctions	Midland, MI	Antique, Collectible	3
Sat., Nov. 5	10am	Mel White Auctioneer	Ovid, MI	Estate	16
Sat., Nov. 5	9:30am	Stantons	Bellevue, MI	Miscellaneous	10
Sat., Nov. 5	8:30am	White Star Auction	Bronson, MI	ATV, UTV, Misc.	10
Sat., Nov. 12	10am	Lyn Liechty Auctions	Brooklyn, MI	Farm Equipment	17

ZONE 6 MICHIGAN					
Fri., Nov. 4	11am	Rowley's Auction Svc.	Yale, MI	Equip., Tool, Misc	17

CATEGORIES	• Computer	• Firearm	• Industrial	• Office Equip.	• Sports
• Antique	• Consignment	• Food	• Jewelry	• Personal Prop.	• Tag Sale
• Business/Commercial	• Doll	• Furniture	• Lamp	• Pottery	• Tool
• Clock	• Equipment	• Glass	• Livestock	• Primitive	• Toy
• Coin	• Estate	• Government	• Musical	• Quilt	• Vehicles
• Collectible	• Farm	• Household	• New Merchandise	• Real Estate	

DATE	TIME	AUCTIONEER/SRV. CITY	TYPE	PAGE/SEC.
Fri., Nov. 4	11am	Rowley's Auction Svc. Yale, MI	Miscellaneous	17
Sun., Nov. 6	11am	Rowley's Auction Svc. Almont, MI	Toy, Collectible	18
Thu., Nov. 10	11am	Rowley's Auction Svc. Dryden, MI	Antq., Coll., Misc.	17
Sat., Nov. 19	10am	Braun & Helmer Auct. Plymouth, MI	RE, Train, Car	11

ZONE 12 OHIO				
Fri., Nov. 11	10am	Whalen Realty & Auct. Neapolis, OH	Furn., Glass, Toy	15

ZONE WEB					
•	•	Dundee	Online	Equipment	17
•	•	John Peck	Online	Miscellaneous	12
•	•	Pioneer Auct.	Online	Personal Prop.	10
•	•	Polley Equipment	Online	Equipment	2
•	•	RJM Auctioneer	Online	Industrial	8
•	•	Rowley Auctions	Online	Estate, Consignment	8
•	•	Stantons	Online	Automobile	10
•	•	Vanderkolk	Online	Paintball	15
Sun., Nov. 6	7pm	Currie	Online	Miscellaneous	15
Tue., Nov. 8	•	Repocast	Online	Semi-Truck, Trailer	13
Tue., Nov. 8	•	Orbitbid	Online	Equipment	13
Tue., Nov. 8	•	Orbitbid	Online	Construction Equip.	13
Wed., Nov. 9	•	Repocast	Online	Equipment	13
Sat., Nov. 12	•	Cryderman	Online	Real Estate	8
Wed., Nov. 16	9am	Pook & Pook	Online	Miscellaneous	9
Thu., Dec. 1	9am	Pook & Pook	Online	Antique Toy	9

ZONE CALENDAR					
Every Wed.	9am	Trading Place	Shipshewana, IN	Miscellaneous	20
•	•	Geyer Farm	Williamston, MI	Consignment	10



Above: Vindex toy John Deere tractor made \$750.

Americana

FROM PAGE 6

working condition. Here a winning bid of \$275 took home a 10k gold-filled watch by Elgin.

At noon Americana auctioneer Perry Gregory took the reins and began the liquidation of a collection of classic Buddy L construction toys that drew strong bidder interest. Examples of the day's finds were a "Buddy L" concrete mixer at \$400 and three-section train switching station (with turret) at \$700, and Winchester signal cannon selling at \$600. Gregory also offered a collection of Fenton art glass lamps, all selling in the \$175 to \$250 range. Antique German Black Forest cuckoo clocks sparked audience attention when one damaged, yet very large, example brought \$1,500.

Introducing the auction company's third auctioneer, Scott Smith, the auction pace remained strong. The final hour of the auction saw a collection of Fenton art glass lamps ushered to new owners with bidding ranging from \$175 to \$250 each, and Fenton Burmese vases headed for new homes at \$175 each. For the Holidays a 7-foot, silver aluminum Christmas tree now graces a new home for a winning bid of \$350.

The Americana Auctions team of auctions was backed by a strong support unit consisting



Above: Martin Waltzing Couple sold for \$400

of Glen's wife Wendy (clerk), Scott's wife Crystal (cashier), and Perry's wife Margaret (assistant cashier). In keeping with the Americana Auctions "family" tradition, Glen's

brother (Gailen), and son (Jason with wife Julie) assisted on the auction floor. Additional information is available from the auction firm at 517-243-9090.



Above: Large Cuckoo clock brought \$1,500



Above: Overland Band Wagon sold for \$350

ESTATE AUCTION

4 BEDROOM, 2 BATHS, Home AND Personal Contents

THURSDAY, NOVEMBER 3 @ 12:00 PM

LOCATION: 11041 S. ELM AVE.

DIRECTIONS: East of Newaygo or West of Howard City on M-82 to Elm Ave., South 3 mi. to Auction OR West of Bird's Market on 104th Ave 1 mi. to Elm, South 1 mi.

HOWARD CITY, MI 49329 zone
4

Mrs. Kemp enjoyed antiquing and collecting. Her house is full of antique furniture and antique dishes & glassware.

We will offer the Real Estate at auction on the same day. 10% BP.

REAL ESTATE Sells at 3:01 PM: To be offered by seller confirmation at 3:01 PM. 4 Bedroom, 2 Bath, 28x78 Manufactured Home on approximately 3+ acres. Included with the home are newer appliances. Nice Country Setting. **OPEN HOUSE: October 30th, 1:00 PM to 2:00 PM.**

SHED & OUTDOOR: 20'x12' Storage Shed; Trampoline; Wicker pcs.; (2) Porch Columns; Greenworks 40v 8" Cordless Pole saw; Mop Bucket; Push Mower; Shop Vac; Craftsman 1600 psi Electric Pressure Washer; Wrought-Iron Patio Furniture (Matching Table & 4 Chairs, 3 pc. Matching set, 4 matching Chairs & table, 2 Matching Chairs, 15 pcs. non-matching);

ANTIQUES FURNITURE: Oak Secretary Bookcase; Spool Leg Glass Ball & Claw Foot Parlor Table; Oak Pulpit; White wicker pcs; Red Velvet ArmChair & Ottoman; Organ Stool; **Painted Cottage Shabby Chic Furniture** (Victorian Settee; Sideboard; (2) Glass Front China Hutch's; Glass Door Curio; Vanity; Iron Youth Bed; Iron Twin Bed; Art Nouveau Display Cabinet; Music Cabinet; Full-Size 4 Poster Bed; Fireplace Mantel w/Mirrored Top; Oval Mirror; End Tables; Coffee Table; 5 Birdcages; **ANTIQUES & COLLECTIBLES:** Large Quantity Antique Dishes Glassware; Figurines; Dolls; Lamps; Wall Art; Radio; Dress Form; Rain Lamp; (8) Wildlife Tapestries; Coin Op Candy Machine, new. **HOUSEHOLD:** Oak Pedestal Round Table w/6 Oak Spindle & Press Back Chairs; (2) Oak Swivel Bar Chairs; Bedroom Furniture; Glass front Gun cabinet; Bookcase; Kitchen goods; Boom Box; Decorative Birdhouses; Collection of Rabbits- glass, ceramic, stuffed; Child's Lucky Plush Rider Spring Horse; Dragon Gothic Wall Lamp; (2) Window air conditioners; & More!

Twin Bed; Art Nouveau Display Cabinet; Music Cabinet; Full-Size 4 Poster Bed; Fireplace Mantel w/Mirrored Top; Oval Mirror; End Tables; Coffee Table; 5 Birdcages; **ANTIQUES & COLLECTIBLES:** Large Quantity Antique Dishes Glassware; Figurines; Dolls; Lamps; Wall Art; Radio; Dress Form; Rain Lamp; (8) Wildlife Tapestries; Coin Op Candy Machine, new. **HOUSEHOLD:** Oak Pedestal Round Table w/6 Oak Spindle & Press Back Chairs; (2) Oak Swivel Bar Chairs; Bedroom Furniture; Glass front Gun cabinet; Bookcase; Kitchen goods; Boom Box; Decorative Birdhouses; Collection of Rabbits- glass, ceramic, stuffed; Child's Lucky Plush Rider Spring Horse; Dragon Gothic Wall Lamp; (2) Window air conditioners; & More!

Estate of Christine Kemp

Merritt Auctions

(616) 754-9437

www.MerrittAuctionService.com

NOVEMBER ONLINE ESTATES & CONSIGNMENT AUCTION

zone
web

BIDDING IS OPEN!

Online Auction Features - Estate Collection of Pocket Watches, Phonographs, Primitives, Advertising, Signs, Tools, Outdoor Items, Glassware & Pottery, Furniture, Antiques & Collectibles, Die Cast Cars, Vintage Toys, Trains, Lamps, Sports Cards, Gas Boy Gas Pump, Ceramic Christmas Trees, Cast Iron, Prints & Pictures, Jewelry, Coins, Trailblazer SUV, Plus Much More! Nice Variety to Be Sold!

ITEMS LOCATED AT: ROWLEY'S AUCTION SERVICE
124 S LK PLEASANT RD., ATTICA, MI 48412

Directions: From I-69 and Lake Pleasant Rd. (Exit # 163) head north on Lake Pleasant Rd., go approx. 1½ miles to auction location.

PREVIEW: OPEN MONDAY THRU FRIDAY @ 10 AM – 4 PM
CLOSING PROCESS BEGINS
WEDNESDAY, NOVEMBER 2 STARTING @ 8 PM



Visit BidOnline.us for full catalog, terms & to bid.

Terms: 10% Buyer's Fee.
3% Charge on Debit/CC. Cash,
Credit Cards, Cks.













NATIVE AMERICAN INDIAN & ETHNOGRAPHIC AUCTION

WEDNESDAY, NOVEMBER 16TH, 2022 AT 9AM



ANTIQUE TOYS AUCTION

THURSDAY, DECEMBER 1, 2022 AT 9AM



Pook
& Pook
Inc.

AUCTIONEERS AND APPRAISERS

463 EAST LANCASTER AVENUE
DOWNTOWN, PENNSYLVANIA 19335

P: (610) 269-4040

[INFO@POOKANDPOOK.COM](mailto:info@pookandpook.com)

[WWW.POOKANDPOOK.COM](http://www.pookandpook.com)

ONLINE BIDDING AT

[POOKLIVE](#), [BIDSQUARE](#), & [INVALUABLE](#)

AY000004L

Visit braunandhelmer.com for full catalog and details. Questions? Call Brian Braun 734-368-1736

SPECTACULAR MILLER ESTATE LIVE AUCTION!

Saturday, November 19

11517 BURGER STREET PLYMOUTH MI



1939 Ford Super Deluxe Convertible w/ Rumble Seat, VIN # 18479967, Turquoise Paint, Frame off Restoration, Engine is a 1953 Mercury Flathead V8 w/ Dual Stromberg Carburetors on an Offenhauser Intake. Isky Cam shaft, Fenton Headers, Mark Kirby Oil Filter System, New Firestone White Wall Tires, and 12 Volt Conversion. 323 Miles Since Restoration!

FABULOUS CAR COLLECTION
BEAUTIFUL BRICK RANCH HOME
HUGE MODEL TRAIN COLLECTION

Braun & Helmer
Auction Service

1957 Ford Fairlane 500 Retractable 2 Door Hardtop w/ 312 Thunderbird Special V8, Red and White Paint, Automatic Transmission, All Original w/ Frame Off Restoration. Odometer Reads 80,206



1957 Ford Fairlane Victoria 2 Door Hard Top, 312 Engine, 3 Speed Standard Transmission on column w/ Overdrive. VIN # C7MV115268, Blue and White Paint, 1957 Plymouth Hub Caps, Lake Pipes, Bar Grill, Cruiser Skirts, Odometer Reads 95,076, Rear Window Skull Eye Brake Lights



Auction Starts at 10:00 AM Home Sells at 11:00 AM

LIVE YOUR BEST LIFE NOW IN A MATURE QUIET NEIGHBORHOOD!

This brick ranch home with manicured lawn and shade trees features 3 bedrooms, 1½ bathrooms and hardwood floors. A detached car garage is perfect for a spacious workshop. This home is well kept with a new cement driveway and sidewalk.

Open House Date: November 9, 4-6 pm



11517 BURGER STREET PLYMOUTH MI



SEE THE HOME

TERMS ON REAL ESTATE: \$10,000.00 Deposit on Real Estate due on sale day (Cashier's check only). Balance paid in full within 30 days. Purchaser must sign Sales Agreement day of sale. This Real Estate sold "as is" with no Contingencies. Seller to furnish Title Insurance and Warranty Deed. Property sold free and clear of all liens, encumbrances, and back taxes, if any. Taxes will be pro-rated to date of closing on a due date basis. Closing will take place at the title company.

THESE CARS ARE RUNNING / DRIVING. THEY WERE WELL MAINTAINED AND KEPT IN CLIMATE-CONTROLLED STORAGE.



1957 Dodge Custom Royal D500, 2 Door Hardtop, Black and Gold Paint, 392 Hemi Engine w/ 2-4 Barrel Carburetors, PS, PB, Quite Certain Numbers are Matching, Odometer Reads 99,256, VIN # 37321143



SEE THE CARS



*1970 Plymouth Fury 3 Convertible w/383 V8 Automatic Transmission. Blue Paint w/ Black Top, Odometer Reads 104,077. VIN # PM27NOD283401. This car is a One Owner and all Original except repaint about 20 years ago.



1957 Pontiac Chieftain 2 Door Hardtop w/ 347 V8, Red and White, Automatic Transmission, Quite Certain Numbers Matching, Newer Paint and Chrome, Odometer Reads 02048, VIN # C757H14784, Style # 57-2737, Body # BC3879, Trim #200, Paint Code VVV, Top ACC

Auction Starts at 10:00 AM Home Sells at 11:00 AM

Huge Vintage Model Train Collection

This Beautiful Collection has been well kept and includes many very scarce sets and pieces mainly from the 1920's to the 60's. Many have their original box's. There is also a nice selection of floor and wall display cases. If you fancy model trains ; you wont want to miss this one!



Collection of
miniature outboard
motors.



Trains in wall displays will be auctioned by the shelf w/ some exceptions.



Railroad Lantern, Lionel Lighted Sign, Lionel Clock, Lionel Log Unload, Engine Round house, Many Train Lay out pieces, Lionel Catalog Display, Lionel Conductor, Lionel Clock, Train Collectors Association Sign, Lighted Lionel Sign, Grand Central Station Clock, Lionel...Super "O"...HO, Train Lantern , and much more!



SEE THE TRAINS

Household and Garage Items.

Questions?

Brian Braun 734.368.1736

David G. Helmer 734.368.1733



Braun & Helmer
Auction Service



Details with hundreds of pictures @ BraunandHelmer.com

Braun and Helmer Auction Service Inc.

Terms: 10% Buyers Premium *
Cash or Check with I.D. * Bank
Letter of Credit for purchases over
\$5,000 or approval from auctioneer.
Restroom on site.

Rockwell

FROM PAGE 1

cate details, this is the one for you. And when you compare the dolls to the actual illustrations, it truly appears that Rockwell's paintings have come to life. If you start a Rockwell collection, make certain that what you are buying is the real thing. Be on the lookout for fakes and copycats. Copycat items come from manufacturers that claim they offer true figurines produced by famous artists, but in fact, are offering only replicas of the originals. Always make sure you find a signature label or be sure the

company offers a letter of authenticity. The RumbleSeat Press, Inc. made signature Collection's dolls in Western Germany from molds crafted by Mary Moline after Rockwell prints. They are at least 37 years old and each doll is one in a series of exclusive limited edition collectibles that authentically duplicate the "true to life" detailing that Rockwell is remembered for. He endowed us with over 3,000 such portrayals of the yesterdays he wanted us to remember. Each doll is hand painted and numbered on the neck. The series began with "Mimi" the huggable little girl with the green coat and red beret. The series of 20 dolls ended with Mr. Rockwell and the "Saturday Evening Post" paperboy. Most of these figurines came with a stand for you to display them in your home. Mimi with her doll baby includes a storybook. Dolls in their original box are more valuable; however, any mint condition Rockwell Signature Collection porcelain doll is worth approximately \$40, but some sell for quite a bit more. Watch for the original RumbleSeat hand tag when purchasing a Rockwell porcelain doll. One interesting way to display the dolls is to have each doll displayed in

front of a copy of Saturday Evening Post cover that inspired it. This creates a visually striking display. Collecting Rockwell dolls is a hobby enjoyed by many a collector and one that can be passed down to your children or grandchildren. So why not begin your special, unique and timeless collection today. Take your child and search a local antique shop for a Norman Rockwell Signature Collection doll.

Right: The loveliest of the Signature Collection porcelain doll series, "Croquet" from a 1931 Saturday Evening Post cover depicts an era long gone in social history.

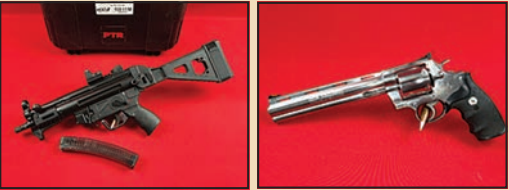


JOHN PECK UPCOMING ONLINE AUCTIONS

"WE HAVE A NICE ASSORTMENT OF QUALITY AUCTIONS CURRENTLY TAKING PLACE. BEAT THE COLD & BID FROM HOME. OUR BIDDING SYSTEM IS FUN, FAST & EASY TO USE. SHIPPING & DELIVERY SERVICES AVAILABLE"

EXCELLENT GUN & AMMO "ONLINE ONLY" AUCTION

BIDDING NOW OPEN!



Sale Features: Over 250+ Guns & 250+ Ammo, Optic & knife lots. Bid from anywhere & shipping offered. Everything from Colt Snake Guns, Antique Arms, Tier 1 Tactical Rifles to High End Optics. The quality of this assortment will not disappoint you.

LOCATION: GLADWIN, MI

Bidding Closes Tuesday, November 1st 8:00 PM



PARKER "ONLINE ONLY" MIO AUCTION

BIDDING NOW OPEN!



1 Owner Sale Featuring: Jeep Wrangler, golf cart, tools, sporting, collectibles & household items.

LOCATION: MIO, MI

Bidding Closes Monday, November 7th 8:00 PM



MATTHEWS "ONLINE ONLY" MOVING AUCTION

BIDDING IS OPEN!



1 Owner Sale Featuring: 2018 Yamaha YXZR 1000 UTV, 2018 Discovery 29' enclosed trailer, Yamaha dirt bike, 5th wheel, snowmobiles, motorcycle, sporting, farm, Large Collection of Vintage Coleman Lanterns, assorted cast iron

LOCATION: GLADWIN, MI

Bidding Closes Tuesday, November 8th 8:00 PM



JIM & LAVONIA NURENBERGER "ONLINE ONLY" AUCTION

BIDDING OPENS MONDAY OCT 31 8AM



1 Owner Sale Featuring: IH Farmall Super C, 3-point items, trailer, lawn, garden, lots of new tools, generator, sporting, archery, survival items, camping, anvil & much more! Jim & Lavonia have a great selection of new & like new

LOCATION: COLEMAN, MI



SHORT NOTICE FISHER "ONLINE ONLY" MOVING AUCTION

BIDDING OPENS TUESDAY NOV 1 8AM

1 Owner Sale Featuring: 4x4 plow truck, (3) farm tractors, tools, antiques & more. Complete sale listing will be posted soon

LOCATION: OMER, MI

HATHAWAY "ONLINE ONLY" ESTATE AUCTION

BIDDING OPENS MONDAY NOV 7 8AM



1 Owner Sale Featuring: Husqvarna MZ61 zero turn mower, Chevy 1500 4x4 pickup, IH 3444 Loader backhoe, Husky upright air compressor, four wheeler, utility trailer, floor model tools, hand tools, lawn, garden & clean household.

LOCATION: ALGER, MI



Auctioneers Note: We are currently working on multiple quality 1 owner auctions that will be open for bidding soon including a 200+ firearm estate auction. Please visit www.johnpeckauctions.com or this local paper for auctions.



JOHN PECK
AUCTIONS

AUCTIONEERS FOR OVER 40 YEARS

We Conduct Live & Online Auctions Statewide All Year Long!
For Complete Listings With 1,000's Of Photos For All Our
Upcoming Auctions Visit www.johnpeckauctions.com

"Auctioneers For Over 40 Years"

If interested in having an auction of your own, please call (989) 426-8061

Semi-Truck & Trailer

zone web

Online Auction | Tuesday, Nov. 8



FEATURING:
2016 Peterbilt 579 Semi
2011 Peterbilt 386 Sleeper Semi
2010 International Prostar Semi
2008 Kenworth T800 Tanker Truck
2006 Kenworth T800B Semi
2000 Peterbilt 379 Semi
1999 GMC C6500 24' Box Truck
1998 Great Dane Reefer Semi Trailer
1998 Clark 53' Step Deck Flatbed Semi Trailer
And Much More.

For detailed information & to bid
visit Repocast.com or call 616-261-4988.

MIEDEMA'S
REPOCAST®



The James Freeman Estate

zone web

Online Auction | Tuesday, November 8

Auctioneer's note: In order to settle the estate, the family has elected to sell all equipment & personal property on this 1-day online auction.

- Tractors**
- JD 3020 Tractor, 2wd, Narrow, Gas, 3pt, PTO, 1 Hyd. Outlet
 - JD 50 Tractor, 2wd, Narrow, Gas, 3pt, PTO, 1 Hyd. Outlet, JD 50 Cultivator Attachment Selling Separately
 - MF 444 Row Crop Gold Tractor, 2wd, Narrow Front, 3 Pt, Pto, Hyd. Outlet
 - IH McCormick Farmall Cub Tractor, 2wd, Gas, Model FCUB

- Trucks & Trailers**
- 2003 Chevy S10 Pickup Truck, 4.3l V6 Gas, 4wd, Ext. Cab
 - JB Enterprises Landscape Trailer, Single Axle, 6'

- Farm Equipment**
- JD Van Brundt Grain Drill, 15 Hole, 7.5"
 - Sprayer, 300 Gal, 26'
 - (2) JD Discs, 12' & 9'
 - Ford 3-Bottom Plow
 - International 4-Bottom Plow
 - JD 3-Bottom Plow
 - 2-Bottom Plow
 - JD 2-Bottom Mounted Plow
 - Sperry NH 489 Haybine
 - JD 24T Square Baler
 - JD 2-Row Corn Planter
 - JD 1240 4-Row Corn Planter
 - JD 825 Cultivator
 - Antique Hay Rake, Steel Wheel, 10'
 - International 35 Hay Rake, 8'
 - JD Back Blade, 7'
 - County Line Back Blade, 7'
 - Brillion Cultipacker, 8'
 - Glencoe Cultivator, 19 Shank, 3pt
 - Springtooth 3-Section Drag, 12'
 - JD 350 Hay Rake, 8'
 - County Line Bale Spear, 3pt
 - JD Post Hole Digger, 3pt, 12" & 8" Augers
 - JD Sickle Bar Mower, 7'

- Brush Hog, 5'
- Cobey Farm Wagon, Steel, 14'

- Lawn & Garden**
- JD 130 Riding Lawn Mower W/Bagger, 42" Deck, 149 Hours
 - White LT1300 Riding Lawn Mower W/ Bagger, 42" Deck
 - JD 165 Riding Lawn Mower, 38" Deck
 - Ranch King Pro Garden Wagon
 - Lawnmower Snowplow, 42"

- Farm Support & Misc.**
- CNH 3pt Quick Hitch
 - Assorted Tractor Tires & Rims
 - Poly Tank, Truck Bed Style, 210 Gallons
 - Livestock Gates, (6) 16' & (1) 12'
 - Round Bale Feeder
 - Oil Tank
 - Dirt Scoop
 - Lely Snowblower, 3pt, 6'

- Shop & Garage**
- Hand Tools, Power Tools, Parts Washer, Saws, Air Compressors, Antiques & Much More Too Numerous To List!

- Personal Property**
- Furniture, Appliances, Kitchenware And Much More Too Numerous Too List!

Equipment Location:
3029 I28th Ave., Allegan, MI



For detailed information & to bid
visit Orbitbid.com or call 616-261-4987.

MIEDEMA'S
ORBITBID®

CAPITAL CONSTRUCTION

zone web

EQUIPMENT & INVENTORY REDUCTION

Online Auction | TUESDAY, NOVEMBER 8

AUCTIONEER'S NOTE: Capital Construction continues to successfully grow and expand, and as part of ongoing operations has decided to liquidate excess and surplus equipment via online auction.



- FEATURING:**
- Mahindra 6010HST Tractor, 4WD, Cab, 1035 Hrs.
 - Mahindra 4010 Tractor, 4WD, 3 pt., PTO
 - 2004 Chevy 2500HD Pickup Truck
 - 2004 Sterling SC8000 Sweeper Vac Truck
 - 1970 Ford 800 Water Truck
 - Ride On Aerator
 - Compactors
 - Generators
 - Air Compressors
 - Water Pumps
 - Snowblowers
 - Heaters
 - Torch Carts
 - Welders
 - Pressure Washers
 - Salt Spreaders
 - Backhoe Attachments
 - Box & Back Blades
 - Augers
 - 3 Point Rototiller
 - Large Assortment Of Shop Equipment Including Tools, Power Tools, Hand Tools, Toolboxes, Ext. & Step Ladders
 - Racking & Shelving
 - Large Assortment Of Building Supplies
 - Plus much more



EQUIPMENT LOCATION: 320 Trestle Dr., Howell, MI 48843

For detailed information
& to bid visit
Orbitbid.com or call
616-261-4987.

MIEDEMA'S
ORBITBID®

FALL ARA OF MICHIGAN

zone web

Online Auction | WED., NOV. 9



- 2022 Kanga DT725 Mini Loader
- Takeuchi TW40 Wheel Loader
- 2018 Bobcat T590 Compact Skid Steer Loader
- 2017 IHI 30V4 Mini Excavator
- 2016 Kubota L3301 HST Compact Utility Tractor
- Teramite T9 Backhoe
- 2017 Ditch Witch SK800 Mini Loader
- Vermeer S725TX Mini Skid Steer 3 Cyl.
- 2017 Snorkel S3219E Electric Scissors Lift, 19' Max Height
- 1995 Bayliner Capri 2050 SS Boat
- 2022 Quality Steel CJ Heavy Hauler Dump Trailer 16'
- 2011 United 8x16' Long Tandem Axle Enclosed Trailer
- 2015 Redit Haul Tilt-Bed Trailer 13'
- John Deere Z920M Zero Turn Lawn Mower
- 2014 Snapper Walk Behind Brush Mower
- (4) 2014 Thermobile Portable heaters
- Hundreds of Tables & Chairs
- Wedding & Banquet Décor & Supplies
- Plus Much More.

For detailed
information & to bid
visit Repocast.com or
call 616-261-4988.

MIEDEMA'S
REPOCAST®



Clarice Cliff brought vibrant splashes of color to pottery

BY MELODY AMSEL-ARIELI

Clarice Cliff, from a large, humble British working-class family, was sent to work as a gilder and ‘paintress’ at a local china factory in Stoke-on-Trent, Staffordshire, at age 13. Three years later, this ambitious teen relocated to the nearby A.J. Wilkinson Pottery. There, she honed her painting and gilding skills, kept pattern books, and worked as a modeler alongside a skilled, all-male team of ceramic designers.

Recognizing Cliff’s zeal and talent, Wilkinson’s owner, at his expense, sent her to the Royal College of Art in London, then to Paris, where she visited art galleries and studied French design. Upon her return, he granted her a studio of her own at Newport Pottery, a Wilkinson subsidiary. Initially, she was allowed to cover imperfections on defective ceramic white wares. She dubbed her solutions, bright, imaginative, abstract freehand designs, “Bizarre.”

In the late 1920s, the height of the Art Deco Era, this trailblazing ceramicist launched “Bizarre Wares,” a personal line (then unprecedented for a woman) of ceramic vases, pitchers, platters, teapots, cups, saucers, and service sets featuring green, yellow, orange, and blue geometric and abstract motifs. According to a 1988 New York Times review of her work, she was inspired by “flowers of Matisse and van Gogh, the landscapes of Modigliani and Gauguin and the geometric abstractions of Mondrian...”

In addition., Cliff designed quirky, modernistic ceramic shapes, like conical pepper and sugar sifters, beehive honey pots and triangular teacup handles, to showcase painted motifs like Coral Firs, Wind Bells, and Ravel, a leaf-

Below: ‘Sunray Leaves’ vase, 1929, realized \$866 inc. premium in 2015, image courtesy Bonhams, www.bonhams.com



Above: Red Roof sandwich set comprising tray and octagonal plates, realized Sold for \$1,300 including premium in 2011, image courtesy Bonhams, www.bonhams.com



Above: Honeydew sandwich plate/tray, Newport Pottery Co England back stamp, ca. 14cm x 27cm, image courtesy www.rubylane.com

and-flower motif honoring the composer.

Many of her conventionally shaped chargers, cream jugs, jardinières, vases, serving bowls, water pitchers, and biscuit barrels boast naturalistic patterns. Her perennially popular Crocus Flowers, which feature visible, ground-breaking blue, purple, and orange upward brush strokes atop bright, slender green stems, is still available in countless variations. Other hand-painted patterns followed, including Lato-na Tree, Nasturtium, Rhodanthe, and Chintz, , featuring bright, voluptuous green, pink, coral, orange, and blue bouquets.

Over time, the ceramicist also added scores of new, exciting Art Deco and Cubism-inspired designs, including Picasso Flower, Green House, fruited Fantasy, and delicate Delicia displaying plump citrus fruits against slender, rainbow-ribboned grounds. Her cheery Red Roof pattern enlivened a range of decorative plates, pedestal bowls, and sandwich sets. Honolulu, featuring medleys of lush red, yellow, and orange-capped trees evocative of an exotic paradise, gracing footed bowls, napkin rings, pin trays, and imaginative vases.

Cliff’s subtler patterns proved popular as well. Realistically hued cream and green Honey Dew beautifies everyday home items like tea

ware, toast racks, and sandwich trays. Secrets, depicting cozy cottages, sandy beaches, winding paths, and rolling hills

in soft browns, greens, and yellows, enhance not only conventional ceramics but also intriguing

See Clarice Cliff page 16



Above: Beehive Honey Pot and Cover, realized \$303 including premium in 2003, image courtesy Bonhams, www.bonhams.com

Below: Early “Bizarre” Fantasy plate, realized \$621 including premium in 2003, image courtesy Bonhams, www.bonhams.com



Spieth & Satow

AUCTION

Thursday, November 3rd @ 4:00 pm
Real Estate sells @ 6:00 pm

REAL ESTATE * 2 AUCTIONS * 1 DAY
COLLECTOR CARS * SCRAP * SCRAP/PARTS VEHICLES * TRUCKS
BACK HOES * LIFT TRUCK * SEMI TRAILER * FINISH & ROTARY MOWERS
LIKE NEW 2 POST VEHICLE LIFT * COMMERCIAL LIFT TRUCK

AUCTION 1 @ 6:00 pm
8.3 miles East of Jonesville at 6451 E Chicago Road in...
Jonesville, MI

AUCTION 2 @ 6:00 pm
8.3 miles East of Jonesville at 6330 E Chicago Road in...
Jonesville, MI

PERSONAL PROPERTY

LIFT: Hanmelson 2 post, 12,000# Vehicle Lift;
BACK HOE & FORK LIFT: Massey Ferguson 2500 Yard Lift; John Deere 310B Diesel Backhoe;
COLLECTOR CARS: 1968 Dodge Coronet 440, 318 Engine New Paint, Running; 1973 Ford Mustang, 302 Engine; Willys Panel Truck; Plymouth Road Runner; Dodge Baracuda
VEHICLES: GMC 7000 Diesel Commercial Truck w/ Tellelect Boom Auger; Chevy 24' Flatbed; Ford F-150 17' Flatbed Tow Truck, 80+ Cars & Trucks in various states of repair including Ford, Chevy, VW, Chrysler, Jeep, Volvo, MG, Datsun and more. Partial List Includes: Pontiac Montana Van, Nissan 280& 300ZX's; Jeep Commander; Volvo 740; Dodge Pick Ups; VW Bugs;
MISC: King Cutter Finish Mower; 5' Finish Mower; 5' Rotary Mower; Trailer Frames; T.M. Generator; Waukesha 6 cyl gas engine
FOR MORE INFORMATION: Contact Darin Spieth at 517-398-6060 or Dan Satow at 517-617-1104, or log onto www.spiethandsatow.com.
INSPECTION: Auction Day at 3:00 pm or by appointment with auctioneers.
REAL ESTATE TERMS: The high bidder on the property will be required to sign the appropriate purchase agreement and to deposit 10% down (unless prior arrangements are made with the auctioneer), balance at closing within 30 days. Statements made auction day take precedence over all printed and previously dispersed information. Property is selling AS-IS. Bidding on the property is not subject to or conditional to financing, inspections or bank approvals of any kind.
TERMS: Cash or negotiable funds. Visa, Master Card, Discover and American Express. A 4% transaction fee will be applied to all credit card purchases. Statements made sale day take precedence over previously dispersed information.
NOTE: Food available onsite

Log onto www.spiethandsatow.com for more photos and information

Spieth & Satow

AUCTIONEERS & APPRAISERS

Darin Spieth
Auctioneer

Daniel Satow
Auctioneer

6 S. Howell Street
Hillsdale, MI 49242
517-439-2528
Fax 517-279-4899
Hillsdale: 517-398-6060

Since 1978 the Weekly Auction & Collectors Guide for Michigan, N. Indiana and N.W. Ohio

ONLINE AUCTION #36 Start Closing Sunday, Nov. 6th @ 7:00 pm

Over 300 total lots. For full listing go to
bid.currieauction.com - Online Auction-36

Antique Mantle Clock, Vintage Big Rapids Oktoberfest Beer Mug, Oak Candleabra, NFL Collectible Pinhead Pins, 10 Tom Brady Football Cards, Steve Yzerman Rookie Card + Complete 1984-85 Set, 700+ 1979-86 Topps Baseball Cards, Power Tools, Ice Hockey Skates, Poulan Pro Blower, Sterno Equipment, Model Cars And Banks, Toy Cars And Trucks, Framed Painting, Shovels And Brooms, Rolling Tape, Assorted Plastic Storage, Malone Kayak Rack, Never Opened 1991 Fleer Ultra Football Cards, 8 Ft Folding Table, 8 Ft Folding Table, Kasco Portable Band Saw Mill, Hazel Atlas MCM Drink Set, Antique Satin Glass Dresser Lamps, Longaberger Berry Basket, Golfer Bird House, Western Black Beauty Rearing Horse, Glass Beer Mugs, Frosted Glasses, Stirrers, Octagon Lamp Table, MCM Round Red Vinyl Chair, Vintage Wood Machinist Tool Chest, Hip Hugger Wood Dining Chairs, Live Trap, Wade English Porcelain Figures, Hummingbird Bird Feeders, Wooden Bird Houses, Food Saver Storage Containers Vacuum Sealers, New In Box Ceiling Fan, 3 Folding Lawn Chairs, Small Coolers, 3 Gas Cans, Assorted Glass Jars With Lids, Marbles, Cat Eye Marbles, 4 Bags New Cat Eye Marbles, Box Of Assorted Marbles, Vintage Croquet Set, 3 Vintage Roller Skates, 1 Pair Of Vintage Ice Skates, 2 Metal Toy Tractors, Mobile Air Tank 9 Gallon, 3 Coolers, 3 Corn Knives, 3 Wooden Bird Feeders, 2 Plastic Bird Feeders, 10 Gallon Milk Can, 10 Gallon Milk Can, 10 Gallon Milk Can, 10 Gallon Milk Can, 5 Gallon Milk Can, Stainless Steel 5 Gallon Milk Can, 3 Folding Chairs, 2 Bag Chairs, 5 Aluminum Folding Chairs With New Replacement Straps, Radio Flyer Wagon, Road Master Wagon, Vintage Wooden Sled, Glass Pickling Jar With Lid, Vinyl Window Shades, 5 Tier Wicker Shelving Unit, Meat Grinder, Multi Slicer, Jerky Kit, 5 Gallon Crock Jug, 3 Gallon Crock Jug, 5 Small Crock Pots, Glass, 2 Crock Pots, 5 Gallon Crock Jug, 5 Gallon Crock Churn, 6 Gallon Crock Churn With Lid, 10 Gallon Crock Pot, 20 Gallon Crock Pot, Various Vintage Safety Pins, Zip-pot Tin With 12 Zippo Lighters, Joe Camel Lighters And Cigarette Case, Vintage Lighters, Vintage Lighters, Vintage Lighters, Vintage Lighters, Canadian Ace Cone Top Beer Can Lighter, Vintage Bank, Vintage Ornate Collectable Table Lighter, Box Of Assorted Skeleton Keys, Box Of Assorted Brass Keys, Box Of Vintage Glass Door Knobs, Box Of Assorted Padlocks, Box Of Vintage Can And Bottle Openers, Vintage Can Openers, Enamel Pot With Lid, Pressure Cooker, Enamel Pot With Lid, Cabbage Cutters, Double Sided Cabbage Cutter, 2 Slow



Moving Vehicle Signs, 6 Tine Manure Fork And Round Spade Shovel, 5 Foot Cross Cut Saw, 5 Foot Cross Cut Saw, 4 Foot Cross Cut Saw, Large Steel Wheel, Ceiling Fan And Toaster Oven, 5 Foot Cross Saw, Ice Saw, Hay Knife, 2 Counter Top Meat Grinders, Air Compressor, New Brute Generator, Air Tank, Propane Tank, Propane Tank 20 Pounds, Air Hose, Hose Fittings, Air Chucks, Freon Conversion Kit, Haeger 228 USA Pitcher And Wash Basin, Stock Pots, 4 Glass Jars, Fairy, Decorative Bowls, Kerosene Can, Vintage Radio, Vintage Wooden Radio Zenith, 7 Wooden Rolling Pins, 7 Wooden Rolling Pins, 6 Small Crock Pots, Brown Crock Jug, 2 Gallon Crock Jug, 5 Gallon Crock Pot, 2 Gallon Crock Jug, 1 Gallon Crock Jug With Lid, Crock Pot, Assorted Crock Pots, 3 Antique Smudge Pots, 3 Brass Spittoons, Cast Iron Anvil, 2 Hitches, 2 Vintage Railroad Lanterns, Embury Antique Railroad Lantern, Green Antique Lantern, Nier Antique Lantern, Dietz Antique Lantern, Antique Lantern, Nier Antique Lantern, 1 Gallon Crock Jug, 1/2 Gallon Crock Jug, Pair Antique Oil Lamps, Antique Oil Lamp, 2 Antique Oil Lamps, 2 Antique Oil Lamps, Antique Oil Lamp, Antique Oil Lamp, 2 Antique Oil Lamps - No Shade, Brown Crock Jug, Crock Jug, Crock Jug, Western Stoneware Crock Jug, Antique Irons, Antique Brass Torch, Vintage Kitchenware, Vintage Tins, Flatware, Antique Portrait Music Box, Stones And Insulators, Weapon Child Safety Locks, Steel Windmill, Steel Stop Sign, Vintage Igloo Cooler, Assorted Lamp Oil, Jar Of Marbles, Vintage Kitchenware, Cooler, Old Toy Cars, Frisbee, And Monopoly, Vintage Lunchboxes, Vintage Glass Bottles, Vintage Glass Milk Bottles, Glass Insulators And Banks, Hummingbird Feeders And Wicker Basket, Vintage Cameras, Assorted Vintage Cameras, Vintage Cameras, 4 Vintage Cameras, 4 Vintage Argus Cameras, Vintage Sony Hard Case And Vintage Cameras And Accessories, Shopping Cart And Cane Seats, Roll-Out Folding Bed And Folding Cot, 2 Coolers, RV Toilet Tank And Bedside Kommode, Wood 2 Drawer Table, Steel Scythe, Steel Scythe, Buck Saw, Buck Saw, Wheelbarrow, Ryobi Rototiller, Hydraulic Floor Jack And 2 Tire Jacks, Fire Extinguishers, 10 Pair Mens Jeans, Horse Eveners, Antique Cash Register, Antique Toasters And 2 Iron Pin Shackles, Generator Wheel Kit, 2006 Jeep Grand Cherokee



CURRIE AUCTION SERVICE

717 SHERIDAN ST., BIG RAPIDS, MICHIGAN 49307

Contact: Phillip Currie • Phone: (231) 349-0533 • Email: phil@currieauction.com

Website: www.currieauction.com & GoToAuction.com ID #1927

Auctioneer ID #: 26066 - License: 2801000043

CONDITIONS & TERMS OF SALE: CASH, GOOD CHECK WITH ID - CREDIT CARDS

NOTHING REMOVED UNTIL SETTLED FOR - NOT RESPONSIBLE FOR LOST OR DAMAGED ITEMS

Verbal statements at time of sale take precedence over written documents

PORTA JOHN

WWW.CURRIEAUCTION.COM & AUCTIONZIP

LUNCH WAGON

ONLINE ONLY PAINTBALL ITEMS AUCTION

zone
web



First Lot ends 6pm
November 1st

4311 30th St., Dorr, MI

The New Salem Corn Maze has discontinued their Zombie Paintball attraction. All paintball guns and accessories will be sold at online auction.

VKAuctions.com



Vander Kolk Auction & Appraisal
Scott Vander Kolk Sr. - (616) 292-4085
Scott Vander Kolk Jr. (616) 437-1047



PUBLIC AUCTION SATURDAY NOVEMBER 5, 2022 @ 10AM

LOCATION: 8016 E GARFIELD RD.

DIRECTIONS: 2 miles W. of Hesperia on M-20 to 192nd Ave., then S. 1 mile to site. Watch for signs!!

zone
4

HESPERIA, MICHIGAN 49421

Beyer Auction has been commissioned to sell the following items @ Public Auction. Items include Coins, Rifles & Hand guns, Misc. Ammo, Assorted deer head mounts & over 100 sets of deer & other horns, Hunting & Fishing Equipment & Supplies including Big & Small lake poles, nets, & fishing tackle, Real Tree, Mossy Oak Scent Lock, Cabelas etc. Hunting clothes shoes & Boots (some brand new), Carpenter & mechanic tools, Power tools, Antiques & Collectibles including over 100 wood & steel pulleys, crocks, primitives, garage, household and more.

Note Guns to be sold @ 11:00 am

No Minimums No Reserves!!

Auctioneers Note: See our web site for complete list & pictures @ www.beyerauction.com two rings. Celebrating 49 years of service.

Terms: All Hand guns & long guns will be subject to \$15.00 FFL Firearm transfer fee. No out of state checks will be accepted. Cash or check with positive ID. Announcements take precedence over printed material. Not responsible for accident or loss. Lunch available. Sales Tax & 5% buyers Prem.



FURNITURE-GLASSWARE-TOYS & COLLECTIBLE AUCTION FRIDAY, NOVEMBER 11, 2022 AT 10:00 AM

LOCATION: WHALEN AUCTION BLDG, 8020 MANORE RD.

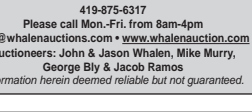
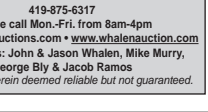
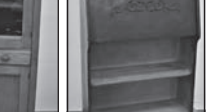
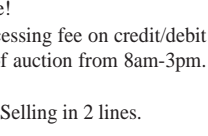
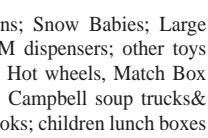
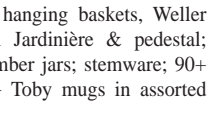
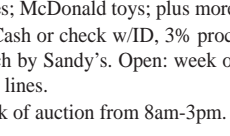
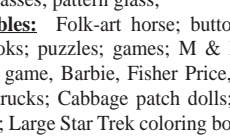
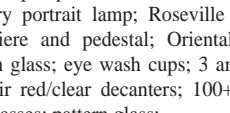
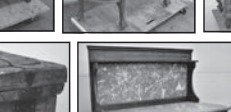
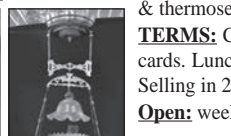
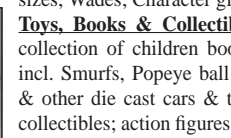
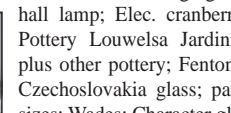
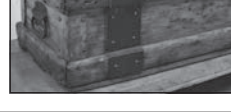
NEAPOLIS, OH 43522

(GPS use Grand Rapids, OH 43522)

zone
12

See whalenauction.com for photos.

Antique Furniture: 40+ pcs of furniture incl. Mahogany marble top washstand, early sofa, telephone stand w/ chair; Oak-buffet, vanity w/mirror, curved glass China cupboard, 1pc. kitchen cabinet, Larkins desk, 4 section stack bookcase-Globe Warnicke; Walnut what not shelf, marble top 4 drawer dresser base, desk chair-cane back & bottom, magazine rack, burl corner shelf; stick & ball high chair, cane bottom; iron bench; tilt top table w/ decorated flowers; tables & stands; maple telephone stand; desk chair; 2 piano stools; needlepoint footstool; early toolbox-Palmer Bee Co.; children furniture; doll furniture; plus more; Jacot's music box; area rugs; **Artwork:** S. Mask oil on canvas lady portrait; Leroy Neiman '80 Fix McRory's Whiskey bar-Seattle WA print; **Lamps, Pottery & Glassware:** 2 Victorian hanging lamps-opalescent hobnail & clear etched; clear etched hall lamp; Elec. cranberry portrait lamp; Roseville hanging baskets, Weller Pottery Louwelsa Jardiniere and pedestal; Oriental Jardiniere & pedestal; plus other pottery; Fenton glass; eye wash cups; 3 amber jars; stemware; 90+ Czechoslovakia glass; pair red/clear decanters; 100+ Toby mugs in assorted sizes; Wades; Character glasses; pattern glass;



WHALEN
REALTY & AUCTION, LTD.
419-875-6317
Please call Mon-Fri. from 8am-4pm
info@whalenauctions.com • www.whalenauction.com
Auctioneers: John & Jason Whalen, Mike Murry,
George Bly & Jacob Ramos
Information herein deemed reliable but not guaranteed.

Clarice Cliff

FROM PAGE 14

fancies like daffodil-shaped preserve pots, rounded sugar shakes, and octagonal squat jars.

These inexpensive “Bizarres,” hand-painted by young decorators known as ‘the Bizarre girls,’ enjoyed great success — even through the Great Depression. In fact, due to celebrity endorsements, masterful advertising, painting demonstrations at prestigious department stores, and personal branding, “Clarice Cliff” soon became a household name. In addition, many found her personal rags-to-riches tale inspiring.

Cliff’s “Fantasque” line followed. Like “Bizarre Wares,” many feature bold, abstract, or angular patterns. Lush Lily Orange, and Gardenias, for instance, grace everything from plates, lotus jugs, candle holders, and serving bowls to tiny, very collectible ceramic clogs. Though Autumn initially depicted coral, green, and blue variations followed. Billowing, cloud-like Balloon Tree patterns adorn chargers, lotus jugs, and jardinières. Her Sunrise, Sunray, and Sunburst patterns, splendid Art Deco cream, orange, and yellow geometrics appearing on preserve pots, wall plaques, and dessert sets, also radiate joy and optimism.

Other Clarice Cliff designs are more unusual. Her textured, cream-colored basketweave Celtic Harvest series boast dramatic, relief molded, hand-painted sheaves of bright wheat, fruit, and flower applique accents, lids, handles, or feet. Her distinctive Raffia Indian jugs, pots, vases, and art pottery, inspired by forms and hues of traditional ribbed Native American basket ware, are also prized collector items.

Some of Cliff’s designs, like cruet set components modeled as fish, creamers modeled as chickens, and teapots resembling teepees, were witty. Others, like her flamboyant Age of Jazz figures, reflecting its high-spirited ballroom dancers and musicians, are playful.

Cliff also designed a small number of novelties like ceramic Toby jugs, traditional drinking vessels resembling full-figure, high-relief, fictional, generic, or historic British characters. An especially desirable one, produced by Royal Doulton in around 1940, is modeled as Winston Churchill, seated atop a Union Jack flag while

holding a ship on his lap.

Though Clarice Cliff was particularly prolific, producing hundreds of novel patterns until her mid-century retirement, her style, encompassing appealing, splashy pops of color and intriguing shapes, is immediately recognizable at sight. Despite their long history, these beautiful works of art remain popular on both sides of the Atlantic.

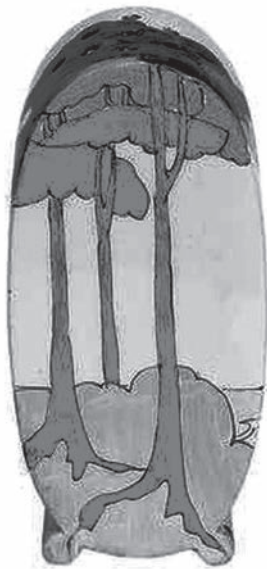
Though single Clarice Cliff pieces may range at around \$100 each, complete demitasse, coffee, tea, or sandwich sets, a stunning addition to any home, currently begin at several thousand dollars. Unusual pieces, however, like umbrella stands, baluster-shaped vases, or featuring rare patterns like May Avenue, command considerably more.

In recent years, collecting Clarice Cliff creations has become a passion among a number of discerning celebrities. Though many are held in private collections, fine examples may be showcased at major museums like the V&A in London and The Metropolitan Museum of Art in New York City. Indeed, many art connoisseurs and historians consider Clarice Cliff one of the most important ceramic artists of the 20th century.

Those wishing to learn more about Cliff and her works may find “The Original Clarice Cliff Website,” found at <https://claricecliff.com/>, of interest. In addition to a brief biography, it offers classified ads, links to social media, and a brief, online Museum tour. Site membership, available for a small annual fee, offers all of the above plus full Museum access, news articles, a low-cost valuation service, and entrance to its member forum. A number of related Facebook groups also exist, including The Clarice Cliff Collectors Club and Clarice Cliff Collectors. Buying, Selling and General Inquiries.

Books on Clarice Cliff abound as well. The Rich Designs of Clarice Cliff (1995) by Richard Green, for example, features a complete account of her life and designs, as well as guides to pieces dating from 1928 through 1936. It also includes nearly 300 vibrant photos.

The Clarice Cliff for Collectors (2009) by Greg Slater, in addition to an extensive reference section, tips on identifying genuine pieces, and a list of sources, offers advice on maintaining, repairing, conserving, and cataloging a collection. It also offers over 400 illustrations with



Above: “Bizarre” Coral Firs sugar sifter, 1933-1939, realized \$1,083 including premium in 2018, image courtesy Bonhams, www.bonhams.com

Below: Rhodanthe Preserve Pot and Cover, realized \$179 inc. premium in 2003, image courtesy Bonhams, www.bonhams.com



Above: Honolulu Plate, 1933-1935, realized \$361 inc. premium 2015, image courtesy Bonhams, www.bonhams.com

Below: Rare “Bizarre” Green House vase, printed factory backstamp, ht 6.7cm, ca. 1931/32, realized \$3,535 inc. premium in 2019, image courtesy Bonhams, www.bonhams.com



detailed captions. —

Clarice Cliff: The Art of Bizarre: A Definitive Centenary Celebration (1999) by Leonard Griffin, a Cliff authority, explores the life, work, achievements and artistic significance of this fascinating artist. Hundreds of photos illustrate her major forms and designs.

JOYCE WAITE ESTATE AUCTION

SATURDAY, NOVEMBER 5, 10:00 AM

LOCATION: 801 S. MAIN ST.

DIRECTIONS: South of M21 on Main St 2 blocks to the sale.

OVID, MI 48866 zone 5

The following items will be sold at public auction:

OLD THINGS & COLLECTIBLES: Ford 8N tractor; Walnut commode; Glass butter churn; Pie safe; Anchor Hocking glass whip cream mixer; Sad & flat irons; Child’s sewing machine; Pine machinist chest; 14 Drawer wood parts cabinet w/marble top; Voightlander Vitessa 35mm camera; Camel saddle; Several old toys; Michael Jackson Bad album; Forge pot & 2 tongs; Barn lumber & timbers; C.T. Hamm barn lantern; 2 Barn lanterns; Nicholson Dairy Waucedah, MI pint milk bottle; Ray Wisner Dairy Ovid qt milk bottle; Washtubs & pails.

HOUSEHOLD: 2 Drive & Breezy wheelchairs; Rolling walker; Hospital bed; Christmas decorations & villages; Leather swivel/reclining chairs w/ottomans; 2 Chrome table lamps; Stained glass lamp; Apple Mac Pro laptop; Speck laptop 3RD Generation; Apple iPod; Nikon Coolpix L610 digital camera; Iphone 6 Generation cell phone; Sony Handycam 40X.

BARN: Craftsman tool chest; MTD chipper/shredder; Toro garden cultivator; Yard carts & wheelbarrows; Cement mixer; 24’ Aluminum extension ladder; Lawn dump trailer; Yard tools; Old bicycles; Toboggan; Lawn roller; Other items.

TERMS: Cash, check, credit cards. All items will be sold as-is. The seller nor the auctioneer will be responsible for accidents day of sale or item after sold.

Mel White
Auctioneer & Appraiser

50 Years
Service

Okemos, MI
517-394-3006

E-Mail: melw21588@gmail.com
Web: www.melwhiteauctioneer.com



ADVERTISERS!

Verify that your ad was received!
Whether you faxed or e-mailed, call toll-free
for verification:

888-339-3795



SLABAUGH MOVING AUCTION

Due to selling our farm and moving we will offer the following at Public Auction. LOCATED: 6 miles North of Gladwin MI on M-18 to F-97 North 1 mile to Renas Rd., West 3/4 mile to sale. 3478 Renas Rd., Gladwin, MI 48624. Follow Yoder Bros. Auction Signs!

SATURDAY, NOVEMBER 5th, 2022 @ 9:30 A.M.



DRAFT HORSES & CARRIAGES

• **Boyd & Bobby** 16 & 7 yr. old Team Belgian Geldings sold choice, well broke to Farm machinery.
• **Buster**, 16 yr old Morgan Cross Gelding Roan, well broke to ride, great trail horse.
• 2 seater surrey • Halflinger size road cart • Sets Leather Draft harnesses • Assorted Horse Collars • Assorted Saddles



DAIRY CATTLE

• 2 Jersey, Guernsey Cross family cows in 1st & 2nd lactation, fresh 60 days • 2 Jersey Guernsey Cross calves • Cattle will be A-2 tested by sale date • 12 Milk grade milk cans • Kylo can cooler • milk strainer • S.S. milk pails

LEATHER SHOP EQUIPMENT

• Adler 205-370 Leather Sewing Machine • Adler 104 Sewing Machine w/Treadle Stand • Landis No. 1 Leather Stitcher W/Treadle Stand • Champion Leather Stitcher w/treadle stand • Singer 132 K6 walking foot stitcher • Singer 29K Shoe Patch Machine 17" throat also 2 smaller ones • Singer 107 W-1 Zig Zag machine • Chandler Fringer • Fortune Beveling machine • Landis cutter & beveler • Groumet setter, foot operated • numerous leather working hand tooling & stamping tools

WOODWORKING and CONSTRUCTION EQUIPMENT

• Dyna Pro Post & Rail processor • German Post Peeler • rigid Miter saw on stand • Powermatic Mod. 45 36" Lathe • 1/2 bag cement mixer on gear • 24' x 24" alum. walk board • 16' x 20" alum walk board • 36' fiberglass ext ladder • 12' fiberglass step ladder • David White Transit • Quantity half log slabs & poles • assorted other contractor tools

Auctioneers Note: Sale order: 9:30 a.m. Misc Goodie Wagons. Approx 10:30 a.m. 2nd Ring on Household, Approx. 12:30 Farm Machinery, followed by Cattle. Most all farm machinery is housed inside and in good condition. Mark your calendar and enjoy a good country auction with us! Hope to see ya there. Leroy

HORSE DRAWN FARM MACHINERY

• Favorite 24" Thrashing Machine, nice condition • All crop Hay Loader used 4 seasons • 2, McDeering hay Loaders • J.D. 1065 Hay Wagon w/ loose hay basket • McDeering No. 9 Hay mower w/7' bar, trailer gear, used 3 seasons • John Deere Big 4 6' Hay mower, also 1 for parts • 10 wheel V Rake • New Holland 56 Hay Rake • New Idea Hay Rake • Case Hay Rake • Hay Windrower • 2, McDeering corn binders 1 w/bundle carrier, also 1 for parts • McDeering 6' Grain Binder • 2, McDeering Grain Binders, need repair • McDeering No. 7 Silo filler • Oliver 11 Hole grain drill • New Idea No. 10 Manure Spreader • box Wagon on Pioneer Gear • Wooden wheel box wagon • Ground drive fertilizer spreader w/Mc.No. 9 Gear • Pioneer 16" R.H. single bottom plow, w/kv bottom • SHIPSHI 10' Cultimulcher w/transport wheels • Miller 2 row cultivator • gravity wagon • Wetmore Grinder • M. Moline mod. D Corn Sheller on Gear • 7' Double Cultipacker • Miller 1 horse cultivator

POWER UNITS

• John Deere 403d F001 4 cyl. power unit on gear w/buzz saw 1069 hrs.

MIS. ITEMS AROUND THE FARM

• Shoeing stocks • 2-3-4 Horse Eveners • 13 Pc. 4" x 12' ice house insulation boards • cross cut saws • ice saws • ice tongs • Planet JR planter • garden planter • variety of 3 tine forks & others • Misc. hand tools • Buggy lantern boxes • Assorted like new log chains • SEVERAL MISC. GOODIE WAGONS!

FURNITURE and HOUSEHOLD ITEMS

• Hoosier style cabinet • Small size kitchen Hutch • oak library table • wardrobe • drop leaf table • rocking chairs • glider • dressers & night stands • granite canners & bowls • like new Pressure cooker • doz. 2 qt. jars • 2 Gal butter churn • Enterprise Sausage Stuffer • Assorted crocks • 2 Cobalt Glass Hens • clothes dryer • candy dishes • assorted other glass ware • bedding blankets • oil lamps • Suit cases • Dinnerware Set • ASSORTED KITCHEN WARE

OWNERS: ALVIN and LYDIA SLABAUGH

3478 Renas Rd. Gladwin, MI 48624

Yoder Brothers Auction Service

Specializing in Successful Auctions

Auctioneers LeRoy and Willis Yoder

9484 S. Rogers Ave., Clare, MI 48617

PH: 989-386-9082

Guest Auctioneer: Vernon Miller



LUNCH AND BAKE GOODS ON GROUNDS

Auction Terms: Cash or approved check with proper I.D. For Credit Cards 4% handling fee. Nothing to be removed until settled for. Not responsible for accidents. All announcements made day of sale take precedence over all printed materials. Out of state buyers must have bank letter of credit.

DUNDEE AUCTION HOUSE

**NOVEMBER MONTHLY
ONLINE AUCTION
AUCTION STARTS:
SUNDAY NOV 20TH AT 9AM**



CLOSING BEGINS: NOV 27TH AT 5PM

WANTED!

Tractors – Antique & Modern • Cars • Trucks • ATVs
Construction Equipment • Tools • Lawn Mowers
Horse Equipment & Tack • Lawn & Garden Equipment
Any Farm Related Items • Good Quality Household Items
Farm Memorabilia • Farm Toys
Vintage Tools And Barn Primitives
Antique Furniture And Signs • Coins • Currency
Any Good Quality Items!!

Items accepted or rejected by the discretion of the auction company.

**SELL WITH US AND LET YOUR ITEMS
RECEIVE NATIONAL EXPOSURE!**

COMMISSION RATES PER ITEM:

\$0-\$250 20%— \$251-\$500 10%— \$501 AND UP ZERO COMMISSION

Accepting Consignments until Nov 17th

Drop off Monday through Friday 11am – 5pm, after 5pm and Weekends by appt.

734-347-3647 or 734-529-3800

3223 DENNISON RD. DUNDEE, MI 48131 PRE-REGISTER TO BID

<https://dundeeauctionhouse.hibid.com>

DUNDEE AUCTION HOUSE



3223 Dennison Rd., Dundee, MI 48131

Estate • Household • Farm • Complete Service

(734) 777-6461 - Cell or (734) 529-3800

Mark Oberly, Auctioneer

Email: dundeeauctionhouse@gmail.com

For more info go to websites: www.dundeeauctionhouse.com
www.auctionzip.com ID #3437 or www.gotoauction.com ID #2031



ANOTHER

Lyn Liechty



HEAVENLY JUNKYARD AUCTION!

Where old tractors, campers, boats, trucks and farm equipment go to die!

SATURDAY, NOVEMBER 12, 10:00 AM

LOCATION: 9084 MARR HWY.

DIRECTIONS: U.S. 223 to Slee Rd. Take Slee Rd. 0.7 mile to Marr. North on Marr one mile.

BROOKLYN, MICHIGAN 49230



www.arealauction.com for full ad and photos

This is a No Smoking Auction! No Buyer's Premium!

Property is under 24 hour surveillance.

CARS, TRUCKS, CAMPERS, BOATS: 1994 Ford Econoline Van, 2000 Ford Ranger, 76 Jeep Cherokee w/snowplow, 1970 Chevy truck (**C20, longbox**), circa 1945 General Motors Well Driver Truck (**restoration/scrap**), 1990 Meercury Marquis, 1987 Ford F150 (longbox), 1985 Ford Ranger, 1986 Ford Ranger, 1990 Buick Park Avenue, Truck Camper shell, Two Camper Trailers (**scrap**).Two aluminum fishing boats (**one with trailer**), yellow plastic Escape sailboat (no sail), red plastic dinghy.

TRACTORS/FARM EQUIPMENT: John Deere B, John Deere 40 C or S, International Harvester tractor FBK-M, John Deere A slant dash, two John Deere Model A frames, two John Deere A tractors, Allis Chalmers tractor, Ford tractor w/finish mower. John Deere Farm disc, two John Deere corn planters, Sidewinder brush hog, snowblades, Tractor mounted scoop scraper. Two 2-bottom plows, one three bottom plow, two 1 bottom plows, Springtooth, John Deere disc, John Deere two bottom plow, two Sickle mowers, hay elevator (**scrap**) and more.

BEST OF THE REST: Overhead gas tank, White enamel cast iron farm sinks, white enamel cast iron round dble sink, vintage blue bathroom sink, rolls of fencing, Cement mixer, drive shafts, axles, 20 plus car motors, 6 plus transmissions, John Deere tractor parts, Gilson riding mower, Agco Allis 1615 G riding mower, Craftsman riding mower, three Garden rotillers, John Deere A parts, Cultivator parts, Two Ford Ranger doors, two auto gas tanks, metal farm gates, Craftsman upright air compressor, Tow bar, bicycles, school desks, wood doors, vintage kids sleds, old jacks, other barn and field misc. too numerous to mention.

LYN'S NOTE: A fun auction spread over an acre or more. Many items are restoration projects. Some functional. There will be scrap! Dress for the weather and terrain with ruts, Buyers, come prepared to mark your purchases! **Come early. There is a lot to see and no off road parking. Skid Loader available auction day only.**

Estate of John Burns (dec), Executor Terry Burns

TERMS: Cash, Good Check, Credit-Debit. ID required to register. Nothing to be removed until settled for. Nor responsible for accidents or theft. **No Smoking on grounds.** Statements made sale day take precedence over all written matter. Everything sold As is -Where is. **Porta John on-site. Food By: Grab A Dawg**

Auction By: **Lyn Liechty Auctions, The R.E.A.L. Auction Co. Adrian, MI**

Auctioneers: Keith Seiler, Liberty Center, Ohio, Lyn Liechty, Adrian, MI

Telephone 517-266-2542, email lynliechtyauctions@hotmail.com

R.E.A.L. Auctions bring REAL Results

McCOY MOVING AUCTION

FRIDAY, NOVEMBER 4 – 11 AM

LOCATION: 6692 PERRY RD.

DIRECTIONS: From I-69 (Exit# 176) & Capac Rd. intersection, turn North onto Capac Rd., go 7 miles, turn East onto Norman Rd., go 3.3 miles, turn North onto Perry Rd. Auction is located 6 miles S/W of Downtown Yale, MI. Watch for Auction Signs.

BROCKWAY TWP. (YALE), MI 48097



Having listed the real estate, The McCoy's have commissioned Rowley Auctions to auction the personal property listed. Auctioneer's Note: Nice auction! Everything is well-maintained. Off-road parking available.

PARTIAL LISTING

2001 Ford F-350 4x4 Crew Cab SLT Super Duty Dually Truck – Just Under 99K Miles, 7.3L V-8 Power Stroke Dsl. Engine, Nice & Clean

Polaris Indy XC High Performance Twin 600 Snowmobile

Equipment & Tools

John Deere 3 pt. Broadcaster
King Kutter 5 ft. Rotary Mower
Hay Wagon w/JD Running Gear
3 pt. V-Ditcher
John Deere 3 pt. Shank Ripper
3 pt. Three-Bottom Plow
King Kutter 3 pt. Sod Buster
Gravity Wagon Auger
U-M Gravity Wagon
Agri-Fab Pull Behind Leaf Collector
5 ft. x 4 ft. Lawn Trailer w/Sides
Echo BRD-280 Bed Redefiner
DeWALT 14" Chop Saw
Craftsman 3/8" Multi Cordless Tools w/ Cases
Steel Fuel Tank
100 lb. Tank

Sheds/Home & Construction Supplies

(3) Shelter-Logic 13x20x10 Tarp Sheds w/New Green Tarps and Extra Anchors (175 Plus) 2x4x12 Boards
R-15 Rolls of Insulation
½" x 12" TE Drywall Sheets
(4) Jeld-Wen 30" Bifold Doors
Jeld-Wen 6 Panel 36" Door
Various Lumber – Cedar, 2x6, 10 ft. to 16 ft. Long Boards

Furniture & Furnishings

Baker's Rack w/Glass & Tile



Oak Cabinet
Conference Table w/Chairs
6 ft. Glass Showcase

Outdoor Related

Nice Group of Diving Gear
Concrete Outdoor Bird Bath & Bird Bath/BirdHouse
Concrete Outdoor Benches
Brinkmann Pro Series 7231 Stainless Propane Grill
Holland Grill & Smoker
John Deere Parts Clock
Bayou Classic Sportsman's Choice Turkey Deep Fryer
RC Cars

Glassware & Household

D'Arques Crystal Champagne Flutes, Wine Glasses, Beverage Glasses, etc.
Corelle Dishes
(4) Heavy-Duty Pallet Style 6 ft, 4 Tier Racks
Christmas Items
Nesco Electric Roast Master
Chaffing Dishes
Serving/Entertainment Dishes
Various Framed Wild Design Prints
Polaris Digital Telescope

TERMS: Cash, cks., credit cards. 5% buyer's fee. 3% add'l. buyer's fee will be added to cc payments. All items are sold "as-is" and must be paid in full day of sale. Lunch Available.



810-724-4035

www.RowleyAuctions.com

MacLachlan Family AUCTION

THURSDAY, NOVEMBER 10 – 11 AM

LOCATION: 4606 SUTTON RD.

DIRECTIONS: From M-24 (Lapeer Rd.) & Newark Rd., head east on Newark Rd., go approx. 8 miles to S Lake Pleasant Rd., turn south, go 2 miles to Sutton Rd. and turn left into auction location. Watch for auction signs.

DRYDEN, MICHIGAN 48428



Laura has decided to sell her home and auction her personal properties of many years of collecting.

AUCTIONEER'S NOTE: A great country auction! A nice variety of antiques and all kinds of tools. Come early in the morning day of sale for good off-road parking.

PARTIAL LISTING

Landscape Trailer w/ Drop Down Gate • Club Car Utility Cart • Sulky Show Cart



ANTIQUE FURNITURE & FURNITURE: Maple Trestle 33" x 9ft Table w/ 8 Ladder Back Chairs; Antique 24-Card Catalog Cabinet; Dry Sink w/ Copper Top; Pine Table w/ 6 Chairs – 4 Side/2 Arm; Pine Hutch; Bentwood Rocker w/ Caning; (2) Rose Colored Chairs & Ottoman; Antique Desk w/ Chair; Downfilled Cushioned Sofa; Sofa& Love Seat; Primitive Cobbler's Bench; Antique Chairs; Pine Bench



ANTIQUES & COLLECTIBLES/PRIMITIVE FARM: Pabst Famous Blue Ribbon Winner – Wilbur's Stock Tonic Framed Print; Old Crocks; Antique Violin w/ Wood Case; Antique Cast Iron Toys; Cast Iron Dinner Bell; Antique Kerosene Lamp Holder; Lanterns; RR Lanterns; Antique Cast Iron Hay Trolley; Sleigh Bells; Antique Tools; Farm Primitives; Cuckoo Clock; Antique Lamp w/ Shade; Crock Jugs; Stained Lead Glass Floor Lamp; Antique Wood Duck Decoys; Fox Hunt Framed Pictures; George Jefferson Framed Picture; Wildlife & Civil War Books; 33 RPM Records; Cast Iron & Tin Toys; Antique Wood Crates; Old Double Barrel Gun; 22ga Gun w/ Scope; Horse Hames; Pocket Watches; Pocket-knives; Miniature Brass Cannon.



TRAINS/ENGINES/ACCESSORIES: Chesapeake and Ohio Trains, Cars, Engines & Track; Lionel Great Lakes Express Train Set; Spectrum Master Railroad Series from Bachmann; Saulenas Tavern "O" Scale Train; Lionel Type VW Trainmaster Transformer; Lots of Buildings & Accessories; Lots of Train Track.



TOOLS: Westinghouse 7500 Running Watts Generator; Champion 2000 Watts Inverter; Skil-Saw 10" 15 AMP Table Saw; Ryobi Steel Chop Saw; Delta Chop Saw; Craftsman 12" Bandsaw; Porter Cable Model 728 Extra HD Porta Band Saw; Power Washer; PextoFootshear No. 137; H.D. Metal Brake – Chicago Steel Bending Brake, Size 818; BlackMax Tube Bender Set – ¼" to 7/8"; Flagler-22 Metal Sheet Roller Machine – Detroit, MI; Metal Bead Roller; LockformerAuto Guide Flanging Attachment; Vintage Lufkin 7-Drawer Oak Machinist Tool Box; 12pc Record Power Carving Chisel Set; Air Brush Equipment w/ Pump for Painting; Ridgid HD Power Snake; Concrete Drill w/ Concrete Bits; Aluminum Ext. Ladders; Husky Triple Stack Toolbox; Power Tools; Torque Wrench Set; Copper Wire; Ridgid 300 Pipe Threader w/ Dies; Toolboxes; Work Horse Heater; Heating & Cooling Supplies & Tooling; Spiral & Flexible Ductwork.



HOUSEHOLD & MISC.: Bose Speakers; Adams Chinese Garden China – 12 Place Setting; Cast Iron Pans; Bull Horns; Rods & Reels.



TERMS: Cash, cks, debit/credit cards. 5% buyer's fee. 3% add'l buyer's fee will be added to debit/cc payments. All items are sold "as-is" and must be paid in full day of sale. Lunch Available.



FLEA MARKETS • ANTIQUES
EDUCATION • WANTED
COLLECTIBLES • SERVICES
ANTIQUES SHOPS • SHOWS

CLASSIFIEDS

FLEA MARKETS • ANTIQUES
EDUCATION • WANTED
COLLECTIBLES • SERVICES
ANTIQUES SHOPS • SHOWS

ANTIQUES

DAVAL'S USED FURNITURE & ANTIQUES. 6 buildings with 15,000 sq ft of quality furniture, antiques and collectibles. SAVE TIME AND MONEY. SHOP DAVALS FOR THE BEST SELECTION, BEST QUALITY, BEST PRICE. YOU HAVE TO SEE IT TO BELIEVE IT. We are truly a destination place and worth the drive. WE BUY ESTATES. Layaway terms available. Visa/MasterCard/Discover accepted. 2 miles W. of Hastings at 2084 W M-43 Hwy near Bob's Gun & Tackle. Hours - Sun: 12-5; Mon-Fri: 10-6; Sat: 9-5. (269) 948-2463 S

Be Sure To Say,
"I Saw It In The
Auction Exchange &
Collector's News!"

SERVICES

MIRROR RESILVERING: Quick Service. 313-521-1888. Frank Wright Glass, 14808 Gratiot. Detroit, MI 48205. Call for quotes. www.frankwrightglass.net S

WANTED

WANTED: Always buying rare antique motors. Outboard and inboard also early race boats. E-mail: bjoutboards@gmail.com 989-326-0727 B.J. Pawlaczyk S

WANTED: Vintage gas pumps, signs, air meters and old service station items. Call 574-361-0721. Goshen, IN (4822)

WANTED: Corvettes wanted 1953 to 1967 any condition. Collections preferred. Paying a pirate's ransom! Email: terry@proteamcorvette.com Phone: 419-592-5086 (5322)

VENDORS

Free booth space available @ our annual antique advertising specialty show on March 18th, 2023. Located at the Indiana State Fairgrounds, Indianapolis. This is one of the largest markets for only 40+ year old advertising in the world. Signs, displays, clocks, and all other forms of vintage advertising.


For info: IAAshow.com
Contact: damongranger@gmail.com 5/22

www.eauctionexchange.com

Denotter Auctions
Weekly Online
Estate and Consignment Auctions
Antiques, Collectibles, Vintage
www.denotterauctions.com
224-392-3101



Feed Your Auction
Addiction With
The Auction
Exchange And
Collector's
News!®



Buying? Selling? Promoting?

TRY AN AUCTION EXCHANGE CLASSIFIED!

Classified ads are limited to Antique Shows & Shops, For Sale, Services, Education and Want Ads. • No auction ads or tag sales.

An Auction Exchange classified ad is only \$6.25 per week for up to 15 words and 25¢ for each additional word.

Please print legibly and include name, address or phone number & town as it will appear in print.

Name _____

Street _____ City _____

State _____ Zip _____ Phone _____

CLASSIFICATION: (i.e. Wanted , For Sale) _____ Please run my ad for _____ weeks.

YOUR AD, AS IT WILL APPEAR

_____	_____	_____	_____	_____
_____	_____	_____	_____	_____
_____	_____	_____	_____	\$6.25
_____	_____	_____	_____	\$7.50
_____	_____	_____	_____	\$8.75
_____	_____	_____	_____	\$10.00
_____	_____	_____	_____	\$11.00
_____	_____	_____	_____	\$12.25

All classified ads must be pre-paid

Please send ad with check made payable to The Auction Exchange • PO Box 90 • Knightstown, IN 46148-0090

Shipshewana
•TradingPlace•
est. 1922

Shipshewana Auction

ANTIQUE & MISCELLANEOUS AUCTION

Every Wednesday, Year-Round at 9:00 am EST









1890's 5ft.
Carnival Wheel

1890's Paper Mache
Store Display

Gustav Stickley
Chair

Limbert
Table

Items pictured above will sell in our November 9th Antique & Misc. Auction

Preview consignments at AuctionZip.com! Auctioneer ID #1945

We have seller space available. Call (260) 768-4129 to consign items!

www.ShipshewanaTradingPlace.com • (260) 768-4129 • 345 S Van Buren St, Shipshewana, IN 46565

JACKSON TOY SHOW

NOVEMBER 5, 2022

9am to 3pm

JACKSON FAIRGROUNDS (Keeley Park)

128 W. GANSON ST.

JACKSON, MI 49201

5

INSIDE THE AMERICAN 1 EVENT CENTER

FREE PARKING

9am Admission \$5.00 per Person
Kids 12 & Under FREE

7:30am Early Bird Admission: \$10.00 per Person
Kids 12 & Under \$5.00 Each

Concessions
Provided by
Crazy Cowboy

Hot Wheels, Tractors, Sport Cards, Star Wars, Comics Tin Wind-Ups,
Pez, Dolls, Promos, Die Cast, Trains, Slot Cars, Movie Posters,
Action Figures, Sci-Fi Monsters Cartoon Characters, Pops
and 100s of more collectibles.

Follow us on Facebook @Jackson Toy Show

MidMichiganSuperShows.Com

LIVINGSTON
ANTIQUE OUTLET

is looking for
Experienced Antique Vendors!

Please stop by or call us at
517-548-5399 and ask to speak with
a manager.

Come be a part of our wonderful dealer base,
and be “where the dealers shop!”

Visit us at:
1825 N. Burkhart Rd., Howell, MI 48855

We have Back Cover
spots available for
2022.

Please call Lorri Egan at
1-888-339-3795 Ext. 134
for special rates
and information.

The Estate of Carroll and Jane Allen

Live! Public!

AUCTION

Saturday November 5th • 10:00 am

2694 108th ave. Allegan, MI

REAL ESTATE offering appr. at 12:00 pm

Great opportunity to own a beautiful home and acreage

- 1.93 acres

- 1600 sqft Single family home

- 3 bedroom

- 2 bath

- 32x40 - 8 detached garage

- 32x48 - 14 pole building

- Nice landscaped yard

- Mature trees

- quiet paved street

Don't miss your opportunity for this fantastic property!

Call anytime for information & other viewing. Scott (616) 437-1047

Open House Date:
Tuesday November 1st ~ 4:00-5:00 pm

NEXSTATE REALTY

TERMS ON REAL ESTATE: \$10,000 non-refundable deposit due on sale day. Balance paid in full within 30 days. Real Estate sold subject to owner confirmation of high bid. Purchaser must sign sales agreement day of sale. This real estate sold "as is" with no contingencies. Real estate sold by legal description. Seller to furnish title insurance and warranty deed. Property sold free and clear of all liens, encumbrances, and back taxes, if any. Taxes will be pro-rated to the day of closing on a due date basis.

Real Estate transaction managed by NexState Realty | www.NexState.com | (616) 799-7253







Featured Items

• 2003 Four Winds 5000 motorhome – Chevy 3500 chassis, 24ft., 38358 miles, sleeps 6, Onan generator, new tires, new awning

• 1926 Ford model T Runabout – 2 door, wood spoke wheels, fold down roof, 4 cyl. flathead, runs

• 1939 Ford Standard Sedan – 2 door, solid, flathead engine, not running

• Yamaha gas golf cart – canopy, box on back

• 6x8 Utility trailer with wood sides

• 1985 Viking pop-up camper – unit is in real nice shape except for the canvas

• International Cub Low-Boy tractor – gas engine, 6 ft. deck

• Simplicity 3416S garden tractor – snowblower, rototiller, mowing deck – needs some engine work

• 1980 Kawasaki KZ750 motorcycle – 8961 miles, Quicksilver windbreaker

• 1980 Suzuki FA50 scooter

Auctioneer's note:

Planning on joining us for this nice country auction with many unique and useable items. The auction will start promptly at 10am come rain or shine

Terms: Cash, Credit Card or good check with proper I.D. 14% buyers premium applied to all purchases with a 4% discount for cash payment. Not responsible for accidents. Auction conducted regardless of weather. This is a partial listing, please see our website for updates. (Additional terms apply to website bidding)

VKAuctions.com for more photos and information

Vander Kolk
AUCTION & APPRAISAL CO.
Vander Kolk Auction & Appraisal
Scott Vander Kolk Jr. (616) 437-1047
Scott Vander Kolk Sr. (616) 292-4085

Garage and Outdoor items

All-Power 7500 watt generator – electric start, Generac 3500 XL generator, Swisher walk behind string trimmer, walk-behind fertilizer spreader, Fertilizer, Weed killer, Hedge trimmers, Electric weed whip, Child's wagon, Men's bicycle, Thermos grill2go, fold up picnic table, Assorted fasteners, Cleaning supplies, Aluminum ramps, Wood ramps, Aluminum hitch carrier, Large assortment of yard tools, Wood burning stove, LP 7 in 1 smoker, Craftsman 5.5 hp push lawnmower, Yard décor, Fishing poles, Lantern, Webber LP grill, (2) Electric mobility chairs, Nice assortment of outdoor furniture, Black and Decker Alligator saw, Leaf blowers, Bruno electric lift, Wheelbarrow, Golf Clubs, RV freezer

Tools and Shop Items



Craftsman transmission jack, Torch set, Floor jack, Shop-Vac, 1200 watt power inverter, Keller 4' stepladder, 6' step ladder, Sears radial arm saw, Sawhorses, Aluminum stepladder, Keller 2 sided fiberglass stepladder, Large assortment of hand tools – hammers, wrenches, screwdrivers, sockets, etc, Pneumatic finish nailer, Makita cordless drill, Dewalt cordless drill, Ridgid chop box on stand, Makita circular saw, Large wooden toolbox with drawers, Walker Turner tabletop drill press, Bench vise, Sears battery charger, Thor bench grinder, Craftsman 2 stage upright air compressor, Lincoln AC 225 stick welder






Furniture



Large oak display cabinet, marble top plant stand, Leather sofa and matching reclining chair, Oak dresser, Round front oak curio cabinet, Kitchen table and chairs, Painted buffet cabinet, Office chair, Painted end table, Upholstered love seat, Several end tables and lamp tables, Serpentine front oak dresser, Upholstered reclining chair, Leather rocker and footstool, oak potato bin, Oak entertainment cabinet, Chest of drawers, Queen sleigh bed, Antique dresser with mirror, Samsung TV, Oak jewelry cabinet, Cedar chest, 8 ft. slate top pool table, Pool table light fixture, Wooden chest, Oak round coffee table



Household and Related items




Refrigerator/freezer, Nice assortment of glassware and stemware, Electric fireplace heater, Artwork and other décor, Regulator wall clock, Lamps, Samsung 42" TV, Kitchen Aid stand mixer, dishes, Pots, Pans, Pottery items, Decorative items, Roll top bread box, Bissel vacuum, GE chest freezer, Holiday decorations, Canning supplies, Coolers, Bud Light cooler, Shelving, Kitchen appliances, Luggage, Fans















More photos & info
on our website!