

THE AUCTION EXCHANGE[®] And COLLECTORS NEWS[®]

\$150

ANTIQUES • COLLECTIBLES • ESTATES • FARM • REAL ESTATE • COMMERCIAL

www.eauctionexchange.com

August 2, 2022

Vol. 45 No. 34

ACROSS THE AUCTION BLOCK

Traylor bird silhouette flies away with a \$30,000 bid

BY NANCY
KELLY

YPSILANTI, Mich. — Now in its second century serving antique buyers

and sellers from around the world, Schmidt's Antiques, Inc. hosts a variety of exquisite auctions in their Ypsilanti facility. Some upcoming

auctions will be devoted to fine antique clocks and Americana and country store collection items, along with their Friday night consignment auctions. Their most recent combined online and in person auction offered an attractive variety of desirable lots ranging from wall art and wood furniture to a 1966 Ford Thunderbird convertible. Prices listed do not include the buyer's premium or sales tax.

A very unusual treasure received the highest bid of the auction, more than doubling its pre-auction estimate. This 20th century pencil and

Left: This 20th century pencil and gouache on cardboard bird silhouette titled "Black Goose" created by American artist William (Bill) Traylor was claimed with a high bid of \$30,000. Photos were provided by Schmidt's Antiques, Inc.



Above: Inspiring a summer of cruising, this 1966 Ford Thunderbird convertible automobile was claimed with a high bid of \$15,000.

gouache on cardboard bird silhouette titled "Black Goose" was created by William (Bill) Traylor, American, (1854-1949). He was a black man born into slavery in Alabama. After spending most of his life after emancipation as a sharecropper, he became a self-taught artist around 1939. He used his art to express his view of life in the Jim Crow south using

simple yet powerful imagery. This 8 by 12 inch picture housed in a 20 by 26 inch wood frame had minor damage yet was claimed with a high bid of \$30,000.

It is summertime in Michigan, and the thought of cruising in a 1966 Ford Thunderbird convertible automobile is very appealing. The white with beige interior beauty featured a 390 cu in V 8

engine, swing away steering wheel, sequential turn indicators, and fender skirts. The odometer showed 59,123 miles. Some minor cosmetic damage was listed, and although it started and ran it was not road tested and therefor sold "as-is". This did not deter the enthusiastic onsite bidder who claimed it with a

See Traylor page 10

FEATURE

Flamingos became frogs for flowers

BY LARRY LEMASTERS

A flower frog (also called pin frogs, spiky frogs, or kenzans) is a type of floral apparatus that is constructed in such a way so it keeps flowers in place in floral arrangements. Flower frogs sit inside the floral container (or are an integral part of the container).

Historically, flower frogs originated in the Japanese art of floral design. The earliest known examples of flower frogs used in ikebana (Japanese flower art) date to the 14th century. Ikebana required strategic placement of flowers, so a holder was necessary. Flower stems were forced into the holes in a frog; thereby, trapping and holding the stem in an exact position and placement in relationship to the other flowers.

The term "flower frog" is neither Japanese nor all that old. The first use of it in the Oxford English Dictionary is from 1876 where Sir E. Beckett referenced, "making bricks with a hollow in one or both faces which I have heard absurdly called a 'frog.'" Historians believe Beckett was talking about flower bricks, made of pottery, that were pierced for flower stem placement. This craze swept England, coming to America not too long after, and the term "frog" stuck. Some historians

Right: Beautiful ceramic flamingo flower frog, circa 1950s.

believe the name "frog" derived from the fact the flower apparatus sat in water.

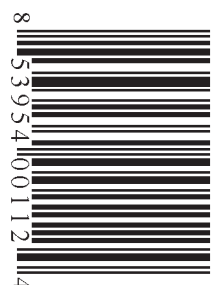
During the Victorian Era, late-1800s, a craze for all things Japanese swept England and then swam across the pond to America. Americans may have seen, first-hand, Japanese displays of ikebana, especially at events such as the 1876 Centennial International Exhibition in Philadelphia or the 1893 World's Columbian Exposition in Chicago. Regardless of where Americans first learned of flower frogs, the entire country quickly became fascinated with these flower holders, especially figural flower frogs.

As the 20th century moved forward, different styles of frogs developed. In the 1920s and '30s, the Art Deco style, which originated in France, swept America as both architecture and design focused on this emerging and exciting style. Some of the Art Deco designs that became popular in flower frogs included stags, snakes, herons, mermaids, and pink flamingos.

See Flamingo page 14



English, teal-blue pressed glass flamingo frog, circa 1950s.



8 53954 00112 4

**SINCE 1978 THE WEEKLY AUCTION & COLLECTORS
GUIDE FOR THE GREAT LAKES REGION**

CRETSINGER ANTIQUE AUCTION

SATURDAY MORNING, AUGUST 6TH @ 9:30 A.M.

LOCATION: 3329 TIBET AVENUE.

DIRECTIONS: 4 miles northwest of Hastings on M-37 or 20 miles southeast of Grand Rapids.

KALAMAZOO, MICHIGAN zone 4

An excellent auction of antiques, furniture, collectibles, glass, lamps, pottery, and home furnishings. This quality collection contains a large group of very nice examples. The 1959 Ford 500 has been owned by Mr. Cretsinger for 40 years, it now has only 66,000 miles on it and it is a classic with many desired options. The collection contains a number of John Rogers statues, Flow Blue china, carved bookcases, Hennecke decorated china (a large quantity including rare examples); Combination bookcase secretaries, Black Memorabilia, Vaseline opalescent glass, GWTW lamps, clocks, leaded, hanging, and reverse painted lamps, pictures, frames, teapot collection, Organ and table lamps, Excellent Victorian and Turn of the Century Sideboards and wardrobes, lots more. Also home furnishings, car models, John Deere X300 riding mower, early bicycle, see the pictures in our gallery and expect more. See the partial and detailed listing below for a sampling of the items in this excellent collection being sold.



1959d Galaxy 500 – 66,475 miles. 352 V8. Three speed automatic transmission. Fresh paint, seats and carpet. Owner got this car 53 years ago with 10,000 miles.

John Deere 300x riding mower; 1948 Raleigh three-speed bicycle with fully enclosed chain guard, linkage brakes, book rack and leather saddle; Walnut Victorian knock down wardrobe – 10 feet tall, Ornate cartouche; Round walnut pedestal dining table – eight 16 inch leaves; Six upholstered dining room chairs; Two oak sideboards; Two oak stools; Mahogany music cabinet; Large Horner style bookcase with carved men and beveled curved glass doors;

1930's curved sofa with lion feet; Walnut three door chest; Walnut wall clock; Oak platform rocking chair; Walnut and ash bookcase; Victorian style king size bed; Large cherry cupboard with small panes of glass; Rare 36 inch round walnut table with 3 leaves; Six walnut Eastlake chairs; Marble top table; Pine wardrobe; Pool table; Large desk with return extension; Lamps: Large red satin GWTW, Banquet lamp, Victorian hanging lamp with pigeon blood shade, Reverse painted lamp, Pink student lamp, Large leaded lamp, Cherub lamp, Blue tones with flower design GWTW, Green tones with flower design GWTW, Others; Over 50 teapots, no duplicates; Statues: John Rogers Weighing the Baby, John Rogers Rip VanWinkle, John Rogers Charity Patient, John Rogers Chess, Hennecke Taking the Cream, Hennecke Is That you Tommy, Hennecke First Love, Hennecke Imposing on Good Nature, Hennecke Wide Awake, Hennecke Fast Asleep, Hennecke Mama and Papa, Hennecke Reading and Writing, Hennecke By Jingo, Hennecke You Dirty Boy; Over 90 pieces Hankey china; 12 place settings Buttercup; Buttercup serving pieces: Gravy boat, Serving bowls, Cream and sugar, Butter dish, Syrup, Vase; Very large rose pattern vase; Bennington pottery; Super large bread bowl; Cracker jar; Cigar jar; Teapots; Pitcher; Assorted other; Assorted china sets and hand painted dishes; Three Flow Washbowl and Pitcher sets; Assorted Flow Blue pieces; Victorian opalescent Vaseline Glass table set.



50 Years

Celebrating More Than

STANTON'S

AUCTIONEERS & REALTORS

Of Service

R

REALTOR®

NAA

Auctioneer

MICHIGAN

144 S. Main Street, P.O. Box 146

Vermontville, MI 49096

Ph. 517-726-0181 • Fax 517-726-0060

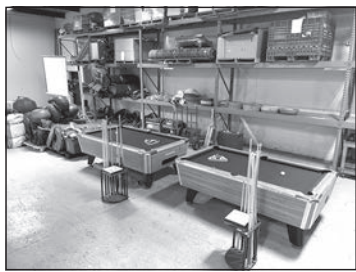
e-mail:

stantonsauctions@sbcglobal.net

www.stantons-auctions.com

Selling all types of personal property and real estate at auction anywhere.

Call for a no-obligation consultation to discuss your personal situation.

ONLINE AUCTION**STARTING: AUGUST 6TH****LOTS BEGIN ENDING: AUGUST 9TH @ 11:00 AM****RJM PLYMOUTH LOCATION: 695 AMELIA ST., PLYMOUTH, MI 48170****INSPECT: AUGUST 8TH, 8:30 AM – 5:00 PM**

INFLATABLES & GAMES: Bungee Run Inflatable Game w/Cords & Vests; Velcro Wall Inflatable Game w/7 Velcro Suits; Bouncy Boxing Inflatable Game w/2 Sets of Giant Boxing Gloves & 2 Headgear; Golf Chipping Inflatable Game; Wrecking Ball Inflatable Game; 2 Inflatable Hobby Horses; Valley Pool Tables, Cue Racks, Cue Sticks; Sumo Wrestling Suit Set w/Set of Sectional Mats; Berg Turbo Trikes, Blowers for Inflatables (New & Used), Deflator for Inflatables.

HUGE QUANTITY OF ANTIQUES, TOYS, COLLECTIBLES, ARTWORK, POSTERS & PRINTS, GLASSWARE, RECORDS, ETC.

MISCELLANEOUS: Hand Tools, Home Improvement, Industrial, Commercial, AV Screens, Generators, Inflatable Mattresses, 3 HP Mercury Outboard Motor & Much More!

Many More Items To Be Added To This Sale

Visit www.rjmauctions.com For More Information, Photos & To Bid!



R.J. MONTGOMERY & ASSOC., INC.

695 AMELIA STREET

PLYMOUTH, MI 48170

(734) 459-2323 • Fax (734) 459-2524

E-Mail: info@rjmauctions.com

Website: www.rjmauctions.com

MOVING AUCTION

SATURDAY, AUGUST 6th @ 10:00 AM

LOCATION: 10599 NAPPER RD.

DIRECTIONS: From Alpena, take M32 West of Alpena 9.7 miles to Herron Rd. Left on Herron Rd. 4.4 miles to Napper Rd. Right on Napper Rd. 1.6 miles to sale site.

HERRON, MICHIGAN 49744 (ALPENA, MI)

*Concession & Handicap Porta Potty Available * Watch For Signs.*

BARN & FARM EQUIPMENT & TOOLS

Case 310 Dozer * Allis Chalmers D15 Gas Tractor * Oliver 770 Gas Tractor * Allis Chalmers 2-Point Posthole Digger * 12' 3-Point Field Cultivators * 12' Field Harrows 3 Point * New Holland 853 Round Baler * White Air 4-Row Corn Planter * John Deere 99 Skid Steer 240 w/Quick Detach, Hay Fork & Bucket * Gehl Equipment Trailer * New Holland 28 Blower * Dump Trailer * 8' 3-Point Snowblower * Allis Chalmers Hay Wagon * Suzuki 300 King Quad (4000 miles) * Heavy-Duty 6' Pull-Behind Disc. * 40+ on Rubber 8" Grain Auger * JD 4-Bottom Plow * White 6-Bottom Plow * JD Chisel Tooth Plow * 5'x6' Deer Blind * Large Amount of Scrap Iron * Electric Cement Mixer * 500# Platform Scales * Set of 4 New Tires 14" * Craftsman Pull-Behind Sprayer * Blacksmith Vise * Numerous 5-Gal. Pails * Halters * Animal Water Heater * 3 Saddles * Pole Trimmers * Tomato Cages * Tree Stand * Trailer Tires * Wheelbarrow * Pitchforks * Yard Tools * Numerous Hand Tools * Electric Fencers * Misc. Piles of Lumber * Heavy-Duty Battery Charger * Chains * Heavy Extension Cords * Chain Binders * 16' Tandem Axle Low Boy Trailer * Fiberglass Boat, 75 HP Star Craft Outboard w/Trailer (sitting in barn for years) * (4) 20' Wagon Stringers * Lumber to include: Ash, Oak, Pine 16', 18', 20' Various Sizes * Central Machinery Drill Press * Vise * Clamps * 1/2" Electric Impact * 3/4" Power Craft Socket Set * 3/4" Dura Craft Socket Set * Husqvarna 450 Chain Saw w/20" Bar * Bottle Jacks * Coleman Lanterns * Roll Line Stack on Toolbox * Sprayer * 20th Century 230-Amp Welder * Box of #1 Traps * New in Box DeWALT 7 1/4" Circular Saw * 1800's Horse-Drawn Sleigh (Handmade) Needs Work * Cream Cans * Gas Cans * Gorilla Adjustable Ladder * Tractor Wheel Weights * Deluxe Power Shop * Front Tire Tractor * Set of Torches * Roofing * Trailer House Axles * Antique Pedal Car * Old Wooden Windows * Cast-Iron Wood Cookstove * 50 KW PTO Generator * British 303 Rifle * Hiawatha Model 189 22 Semi Automatic * Draw Knives * Many Boxes of Hand Tools * Electric Tools * Cordless Tools * Much More.

COINS: 1000+ Wheat Back Pennies * Silver Quarters * Nickels * Silver Dimes * Kennedy 1/2's * Walking Liberty 1/2's * Eisenhower 1/2's * Buffalo Head Nickels * Sitting Liberty 1844 Quarter * Silver Dollars * 10K Gold Mason's Ring w/Red Stone * Many More Misc. Coins.

ANTIQUES & HOUSEHOLD & COLLECTIBLES

Walnut Victorian Store Cabinet (Ever Ready Dress Stays, Spool Cabinet) * Oak Pie Safe * Floor Model Victor Safe * Hump-Back Trunk (refinished by: Shirley Pinkel) * 42" Round Oak Table & Pressed-Back Chairs * Rush Seat Chair * Oak Gentleman's Dresser w/Hatbox * Pine Chest * Oak Floor Model Butter Churn * 48" Square Coffee Table * End Tables * Wing-Back Chair & Matching Ottoman * Oak Pressed Back Rocking Chair * 3-Drawer Baby Dresser * Brass & Iron Bed from "Globe Hotel" full size * Commode w/Towel Bar * Patio/Porch Set w/Heavy Iron Twisted Legs * Lg. Set of Fiesta Dinnerware * Barbie Dolls * Old Books * Waterford Crystal * Porcelain Dolls * Antlers * Wicker * Cast-Iron JD Tractors & Other Cast-Iron Toys * Many Tin Toys * Pyrex * Corning Ware * Many Crocks * Holly Hobby Lunch Box * Peanuts Lunch Box * Crock Bowls * Many Antique Prints including Several of Cows * Wall Mount Cast-Iron & Glass Coffee Grinder * Printer's Type Set Drawers * Old Fisher Price Toys * Pine Ballot Box for Voting (brass hasp) Original Paper Sticker on Lid * Oak Drop-Front Desk * Doll Buggy * Many Old Milk Bottles * Cedar Lawn Swing * Hunting Suits * Bowl & Pitcher Sets * Mantel Clocks * Leaded Glass Floor Lamp * Royal Crown Cola Thermometer * Lg. Pudding Stones * Graniteware * Pressure Cooker * Pfaltzgraff Dishes * Snow White & 7 Dwarfs Tin Kitchen Set * Kerosene Lamps * Porcelain Pioneer Dairy Feeds Sign * Scandalli Accordion in Original Case * Much More.

TERMS FOR PERSONAL PROPERTY: Cash, Check, Visa or MasterCard or Discover. 4% Processing fee on All Credit or Debit Cards. With Proper I.D. Everything Sold As-Is, Where-Is With No Guarantees or Liabilities. Announcements Day of Sale Take Precedence Over Printed Matter. We will be following **COVID 19 SAFE PRACTICE**. CDC social distancing guidelines will be followed. Absentee Bids Accepted.

Photos: auctionzip.com Auctioneer Code #18017
Photos: www.gotoauction.com Auctioneer Code #6682

McKenzie
AUCTION

Auctioneers:

Scot & Terry McKenzie
(989)-657-0812

ONLINE ONLY AUCTION

**Tuesday, August 2nd -
First Lot Ends At 6 PM**

4311 30th St., Dorr, MI

*Power Equipment * Tools * Furniture *
Collectibles * Antiques * Household *
Some Pallet Lots*

**SEE OUR WEBSITE
FOR INFORMATION AND BIDDING.**

VKauctions.com



Vander Kolk Auction & Appraisal
Scott Vander Kolk Sr. - (616) 292-4085
Scott Vander Kolk Jr. (616) 437-1047



AUCTION CITY

ONLINE ONLY AUCTION



TUESDAY, AUG. 9th

Inspection: Mon/Tues, 8th/9th - 9 am-4 pm

WWW.AAUCTIONCITY.COM

12207 Inkster Road, Taylor, MI 48180

**Register for free, pre-bid, items begin ending
at 6:30 pm on the 9th.**

ITEMS: Municipal previously owned equipment & consignments: 2 CAT Loaders, Tymco Vacuum Sweeper, 1950 Ford, 1979 Fairmont, F250, F350, Chev.3500, Snow Plows, Cement Eq.Trailer & Misc.

**(734) 941-6490-phone (call or text)
email: aAuctioncity@gmail.com**

AUGUST ONLINE ESTATES & CONSIGNMENT AUCTION

BIDDING IS OPEN!

Items Located At: Rowley's Auction Service

124 S Lk Pleasant Rd., Attica, MI 48412



Directions: From I-69 and Lake Pleasant Rd. (Exit # 163) head north on Lake Pleasant Rd., go approx. 1 1/2 miles to auction location.

Preview Open Daily @ 10 AM – 4 PM

Closing process begins Wednesday, August 3 @ 8 PM
Online Auction Features - Pedal Tractors, Sports Cards, Signs, Advertising, Primitives, Jewelry, Antiques & Collectibles, Toys, Glassware & Pottery, Outdoor Equipment & Items, Tools, Furniture, Comics, Coins, Music Instruments, Plus Much More! A Nice Variety to be Sold!!

Terms: 10% Buyer's Fee.

3% Charge on Debit/CC. Cash, Credit Cards, Checks

**Visit BidOnline.us for full catalog,
terms & to bid.**



Rowley
AUCTIONS

810-724-4035

www.RowleyAuctions.com

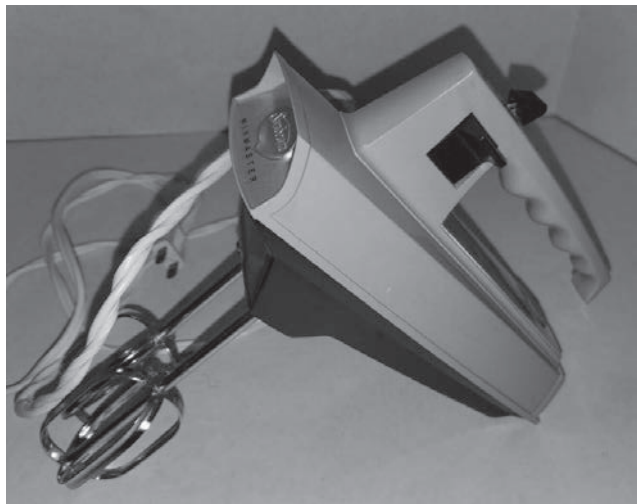
Sunbeam has mixed things up for over a century

BY WILLIAM FLOOD

You may know a classic Sunbeam Mixmaster by the sight of its sweeping white arc. If you grew up with one, you know how durable they are – made with tough American steel and proud U.S. manufacturing. Their electric motors were probably strong enough to propel a small fishing boat. Many of them still run as strong as ever. Those Sunbeam stand mixers – Mixmasters by name – were one of the gold standards of kitchen appliances for decades.

Sunbeam began in the 1890s as the Chicago Flexible Shaft Company founded by industrialist John K Stewart (who also co-founded gauge manufacturer Stewart-Warner). Originally, the company manufactured livestock grooming tools like clippers and sheep shears. In the early 20th century, the company added household appliances to its lineup with the popular Princess Electric Iron. In the 1930s, Sunbeam offered a line of toasters – including the stunning 1939 Art-Deco T-9 model which drew design inspiration from the New York World's Fair. The name “Sunbeam” sprung from a contest to rebrand their burgeoning home appliance line.

Sunbeam introduced the Mixmaster in 1930. It was the world's first mixer featuring two interlocking and detachable blades. Sunbeam added accessories like a meat grinder and juicer to expand the machine's capabilities. The Mixmaster was so popular, that even during the Depression, Sunbeam sold hundreds of thousands of them.



Above: By the 1960s, Sunbeam's hand mixers were nearly as popular as their stand Mixmasters.

The first model offered to the public was the Mixmaster M4 series, hitting retailers around 1931. That preliminary model improved in subsequent releases. Sunbeam added accessories like the juicer with the next year's models, M4F and M4H. Around 1933, the company added a three-speed model M4J. It was the first model with a handle, which allowed the head to be removed to use as a hand mixer. The speed control was also relocated to the rear of the mixer.

In 1935, Sunbeam introduced the Model 1. It came with a more versatile 10-speed motor and had a fan in the housing to cool the motor. That year, Sunbeam also introduced a small-scale, 25-watt, one-speed children's mixer which had two mixing bowls and most of the accessories available on the full-size mixer.

Industrial design was in its infancy in the 1930s but Sunbeam was quick to incorporate machine-age and Art-Deco detailing to make their products appealing. Art Deco's influence showed up on the Model 3, introduced in 1936. The front grille was redone in

Streamline Moderne style, complete with vertical openings reminiscent of a train engine of the era. The patented speed control, known as the Mix-Finder Dial, displayed aviation influences.

Four years later, the Model 5 sported modernist elements – that would continue into several subsequent models. Vent openings went horizontal, and a new color scheme with a cream body and jadeite bowls was added to the popular white-on-white lineup.

Just before World II, Sunbeam introduced the Model 7. It was the first Mixmaster featuring a handle-based beater ejector. Production was halted during the war, then restarted in 1946. The Model 7 continued as Sunbeam's flagship product until the 1950s.

Sunbeam's jet-age Model 10 arrived in 1950 sporting fins and a futuristic front grille. An adjustment lever for various bowl sizes was added to the base and clear glass bowls were adopted. This was also the first model to come in chrome.

With Model 11 came a round vented front grill, a design feature that lasted for more than a decade. In 1957 Sunbeam brought out an enhanced Model 12 with a 12-speed motor, sold in chrome and several popular colors.

In the 1970s, Sunbeam re-engineered the Mixmaster, abandoning the tradition of steel bodies in favor of cheaper plastic. Those, too, have stood the test of time, and many are still in use. Models with an MM designation or a “1-” identification (i.e., 1-7, 1-8) are from that era and have electric cords that detach from the right side of the body.

By the 1950s, Sunbeam was a household name and the company added hand mixers to its lineup, beginning with a six-speed model in 1952. Throughout the subsequent years, Sunbeam made everything from



Above: The Model 10 was released in 1950. Changes included a lever to adjust bowl size.

waffle irons to coffee makers. In the 1960s, the modernist Vista line of appliances hit the shelves, which featured additional stand mixers, electric can openers, and blenders.

Sunbeam also expanded its product line via acquisitions of several other household brands in the latter half of the 20th century. In 1960, Osterizer came under their umbrella with the acquisition of the John Oster Manufacturing Company. In the late 1970s, Sunbeam secured the Crock-Pot with the acquisition of Rival.

Yet, the Mixmaster remained Sunbeam's immortal product. It was so impactful that in 1998, the US Postal Service dedicated a stamp in its honor. Sadly, as consumers' buying preferences turned from quality to

price, the public lost sight of the value of longevity and good engineering.

Many of these kitchen staples ended up at yard sales, in thrift stores – or worse, sent to landfills. Don't let that castoff stigma fool you; even at 50 or 60 years old, Mixmasters and other Sunbeam appliances still work like champs. Surprisingly, purchasing one of these workhorses will typically cost you less than one of today's cheap substitutes. It may look a little worse for its years of wear, but it's common to find a solid-condition 50s-era Mixmaster in an antique store for around \$30 (half of that at a yard sale). The plastic-bodied models from the 60s and 70s are often about one-third of that!

The real grand-slam is finding a mixer with

its affiliated accessories – attachments like blenders, juicers, meat grinders, and even ice cream freezers were available at one time. A well-outfitted set can raise the price three-fold. Keep an eye out for original manuals and cookbooks to round out the collection.

Whatever you discover – whether it's a working model with just its beaters and bowls, or a more complete outfit with all the accessories, you are certain to appreciate it just like your mother or grandmother did. Even the most stubborn batch of gingerbread is no match for one of these workhorses. Plus, a classic Mixmaster will still be working when today's cheap, big-box equivalent is broken and its warranty expired!



Above: Owners and collectors are often on the lookout for original user manuals for Sunbeam appliances.



Above: This model 3 sports several of its accessories including the jadeite bowls,

ORDER FORM

SUBSCRIPTIONS

SAMPLE



THE AUCTION EXCHANGE
And COLLECTORS NEWS®

PO Box 90, Knightstown, IN 46148-0090
Phone Toll Free (888) 339-3795, x134 • Fax (877) 223-3778
info@eauctionexchange.com



☐ Free Sample Copy of *The Auction Exchange & Collectors News*
(One free sample per address per year)

SUBSCRIPTIONS: ☐ New Subscription ☐ Renewal

- ☐ \$34⁰⁰ for 1 year (51 issues)
- ☐ \$61⁰⁰ for 2 years (102 issues)
- ☐ \$88⁰⁰ for 3 years (153 issues)


Total enclosed: \$.....

Name.....

Address.....

City..... State..... Zip.....

Phone (.....)..... Email.....



This is a gift, please send a postcard announcing the gift subscription
From

I read *The Auction Exchange* for:
☐ Auction reviews ☐ Articles ☐ Advertising ☐ Other

Mail this completed form with payment to: PO Box 90, Knightstown, IN 46148-0090

CREDIT CARD ORDERS: 800-876-5133

Tony GregoryPublisher

Lorri Egan Publication Mgr./Advertising

Connie Swaim.....Managing Editor

Tari True Pre-press Manager

Publishers Emeritus:
John Armstrong, Randy Barz,
Judy Huxmann, Lars Svendsen

Reproduction in any form is prohibited without
the written consent of the publishers.
ALL RIGHTS RESERVED.

Auction Exchange and Collectors News
Published weekly except one week in December
(51 issues) and mailed every Thursday
ISSN: 0279-0950
Published by MidCountry Media, Inc.
27 N. Jefferson St., PO Box 90
Knightstown, IN 46148
Periodicals postage paid at Knightstown, Indiana

Subscription price: \$34.00 for one year
\$61.00 for two years; \$88.00 for three years

POSTMASTER:
Send address changes to:
The Auction Exchange and Collectors News
PO Box 90
Knightstown, IN 46148-0090

SUBSCRIBERS:
We print the advertisements as sent to us by
the auctioneer. It is not possible to check the
correctness of the listed items, *so before
traveling a long distance for a particular item,
contact the auctioneer first by phone.*

POSTAL REPORT

Without fail for 42 years, The Auction Exchange & Collectors News
has been delivered to the USPS by 5 pm every Friday.

Currently we are delivering the newspaper to the USPS by midnight Thursday.
Despite this early entry into the postal stream and our vociferous lobbying at all levels
of the USPS, we are experiencing delivery problems in the following areas:

Vermontville MI

If you don't receive a paper by Tuesday's mail, you may call us to have a paper sent
first class.

If it is after normal business hours, please call 800-876-5133 ext. 135.
Please also call your Post Office to report your late delivery.

GENERAL ADVERTISING INFORMATION

DEADLINE IS WEDNESDAY AT 12 NOON

Unless otherwise noted

ADVERTISING SIZES AND RATES

1/8 page (5"Wx4"H) - \$83.801/2 page (10¼"Wx8"H) - \$315.56

1/4 page (5"Wx8"H) - \$157.77Full page (10¼"Wx16"H) - \$546.15

Call for additional sizes and rates 888-339-3795


Open Rate
Our open rate is calculated at \$7.33
per column inch. Call for more
information about our Low Cost
Standard Open Rate (\$6.98/col.")
which is based on a minimum of 10
point type in the body copy.

Display Advertising
Each page is six columns wide (10-
1/4 inches) by 15-1/2 inches high.
Each column is 1-5/8 inches wide.
We use a minimum of 10 pt. type (for
body copy) for purposes of readabili-
ty, and specific point sizes for head-
ing (24 pt.), date (18 pt.), city/state
(16 pt.) so please keep this in mind as
you plan your ad. We typeset your ad
to fit our specifications while keeping
in mind your requirements and the
need to minimize the cost of your ad.
Back Cover Ads: (Non-auction
ads only.) Back cover ads are booked
in advance by reservation - call for
availability.

Deadlines/Sending Copy: Our
deadline is 12 noon on the
Wednesday before the issue date,
(Monday). All material must be
received by this time, including pho-
tographs. (Call for holiday sched-
ules.) A 10% surcharge will be
added to display advertising received
Wednesday between 12 Noon and
3:00 p.m. We cannot always guaran-
tee insertion of late ads. In all cases,
it's a good idea to call and notify us
that an ad is being sent, and to con-
firm that your ad has been received.
Mail Your Copy: 27 N. Jefferson
St., Knightstown, IN 46148. First
class mail may or may not be deliv-

ered by deadline if you mail on
Monday or later. If you mail on
Tuesday, send by U.S. Express
Mail, UPS Next Day or other "next
day" services.
Fax Your Copy: You may fax your
ad to us at: 877-223-3778.
E-Mail: Please send "Text Only"
format, we cannot use files that have
been saved in their native software.
Email address:
info@eauctionexchange.com
Photos: should be sent in JPG for-
mat, as attachments to E-mail. We
accept color, or black and white.
Accuracy: Every effort is made to
ensure the accuracy of your finished
ad. Sending it to us well in advance
is essential in allowing adequate
time for proofing and faxing layouts
to you for approval. We assume no
guarantee or liability concerning the
accuracy of published advertise-
ments.


ISSUE DATE	DEADLINE (NOON)
AUGUST 9	WED., AUGUST 3
AUGUST 16 . .	WED., AUGUST 10
AUGUST 23 . .	WED., AUGUST 17
AUGUST 30 . .	WED., AUGUST 24
SEPT. 6.	WED., AUGUST 31
SEPT. 13.	WED., SEPT. 7
SEPT. 20.	WED., SEPT. 14
SEPT. 27.	WED., SEPT. 21



THE AUCTION EXCHANGE
And COLLECTORS NEWS

ZONE MAP

This zone map is a
feature of *The Auction
Exchange & Collectors
News* and is designed to
make it easier for you to
locate events throughout
the region.
You will find the Zone
symbol following the city
and state in the heading of
each ad.
This symbol will corre-
spond to the zone map
shown here.



UPCOMING AUCTION CALENDAR

JANUARYFEBRUARYMARCHAPRILMAYJUNEJULY

AUGUSTSEPTEMBEROCTOBERNOVEMBERDECEMBER

The Upcoming Auction Calendar is a listing of future Auctions beyond the current week.
Auctioneers: This service is provided at no charge. As with everything - we do our utmost to make sure that your Auction is listed in a timely and accurate fashion.
For our Readership: For more thorough listings contact the Auctioneer personally and tell them where you saw their ad!

ZONE 1

Thu., Aug. 4, Leist Auctioneers, Farm, Brimley, MI

ZONE 2

Thu., Aug. 4, Yoder Bros Auction Service, Estate, Clare, MI
Sat., Aug. 6, Yoder Bros Auction Service, Antq., Coll., Misc., Lake, MI
Sat., Aug. 13, Yoder Bros Auction Service, Farm, Clare, MI
Sat., Aug. 20, Hankins Auction Service, Miscellaneous, East Jordan, MI

ZONE 3

Sat., Aug. 6, McKenzie Auction Service, Equip., Tool, Misc., Alpena, MI
Sat., Aug. 6, Rowley's Auction Service, Classic Car, Roscommon, MI

ZONE 4

Fri., Aug. 5, Claud McMillen Auction Co., Estate, Battle Creek, MI
Sat., Aug. 6, Hanson Auction Service, Estate, Morley, MI
Sat., Aug. 13, Dan Young, Antq., Coll., HH, Hamilton, MI
Sat., Aug. 13, Hanson Auction Service, Estate, Remus, MI
Thu., Aug. 18, Stantons Auctioneers, Firearm, Hastings, MI
Sat., Aug. 20, Dales Auctioneering Service LLC, Antique, Collectible, Holland, MI
Sat., Oct. 8, Dales Auctioneering Service LLC, Fall Farm Consign., Holland, MI

ZONE 5

Thu., Aug. 4, Spieth & Satow, Antq., Coll., Misc., Litchfield, MI
Sat., Aug. 6, Mel White Auctioneer, HH, Coll., Misc., Mason, MI
Wed., Aug. 10, Spieth & Satow, Real Estate, Waldron, MI
Sat., Aug. 13, Mel White Auctioneer, Auto, Gun, Coll., Laingsburg, MI
Sat., Aug. 13, Pioneer Auction Service, Farm Equipment, Mount Pleasant, MI
Sat., Aug. 13, Yutzy's Auction Service, Tool, Antq., Auto, Charlotte, MI
Thu., Aug. 18, Braun & Helmer Auction Service, Gun, Ammo, Coin, Pinckney, MI

ZONE 6

Thu., Aug. 4, Braun & Helmer Auction Service, Estate, Ypsilanti, MI
Sat., Aug. 6, J.R.T. Thumb Auctioneers, L.L.C., Estate, Kenockee Twp., MI
Tue., Aug. 9, Braun & Helmer Auction Service, Tools, Equip., Misc., Saline, MI
Sat., Aug. 13, David Clark Auction Services, Farm, North Branch, MI
Sat., Aug. 13, Schmidt's Antiques, Americana, Ypsilanti, MI

ZONE 7

Sat., Aug. 6, Auctions by Moldenhauer, Miscellaneous, Michigan City, IN

ZONE 8

Thu., Aug. 4, Strawser/Real Estate Sails, Inc., Antq., Telephone, Wolcottville, IN

ZONE 12

Fri., Aug. 12, Whalen Realty & Auction, 2 Day Multi Estate, Grand Rapids, OH

ZONE PA

Wed., Aug. 17, Pook & Pook, Inc., Photography, Print, Downingtown, PA

PHONE NUMBER

888-339-3795

LIST YOUR UPCOMING AUCTIONS FREE!

Day	Date	Auction Company	Type of Auction	Town	State

Mail to: The Auction Exchange & Collectors News
PO Box 90, Knightstown, IN 46148-0090

Automobile museum houses unique Cord prototype

BY MICHELE F. MIHALJEVICH

AUBURN, Ind. – In a northeast Indiana museum full of classic cars, a one-of-a-kind prototype built 90 years ago stands out.

The Cord Experimental can be found at the Auburn Cord Duesenberg Automobile Museum in Auburn. Manufactured for the 1932 model year, it was meant to be the beginning of a next generation of Cords, replacing the Cord L-29. The L-29 was the first mass-production front-wheel drive car in the United States.

During the planning and manufacture of the Experimental, the country was in the midst of the Great Depression. Company officials eventually decided the new, more expensive car wouldn't sell, and scrapped the plan after it was built, said Sam Grate, the museum's curator.

"It's an excellent representative sample of how the company was thinking forward after

Above: The main staircase at the Auburn Cord Duesenberg Automobile Museum in Auburn, Ind. The museum is in the 1930s national headquarters of the Auburn Automobile Co. (Michele F. Mihaljevich)

the Cord L-29, even if it didn't end up happening," he noted. "It was the next step of what might have happened had the Depression not occurred."

The Experimental weighs more than 6,000 pounds and is 20 inches longer than the L-29. It has a wheelbase

Above: This Cord Experimental was originally intended to replace the Cord L-29, the first mass-production front-wheel drive car in the United States. (Michele F. Mihaljevich)

have sold for more than \$5,000, while the L-29 started at more than \$3,000.

The museum's records seem to indicate two other experimental cars were at least considered for manufacture, though the museum staff is only aware of the one in the collection, Grate said. A note in the museum's archives, handwritten in August 1932 by the vice president of engineering, says, "EXPR Cord-12, three sedans."

"At least three were queued to be produced," he stated. "But this is the only one that is and ever will be. There's not going to be a second one found."

After plans for mass production of the Cord Experimental were nixed, the car was dismantled and the parts set aside, Grate said. "Since they were not going forward with the Experimental, it made sense to disassemble it," he explained. "Some employees might have taken some of the parts for themselves. There were no future Cords planned at that time. Once plans were scrapped, they all just became used parts. They weren't thinking about the future or if the parts would be useful

See Cord page 7

WEEKLY Auction Calendar

The Weekly Auction Calendar is provided as a service for our Advertisers and Readers. We make every effort to ensure accuracy of the calendar but always refer to the complete Ad to verify the Calendar information. Unless specified by the Auctioneer in writing we reserve the right to designate the 'Type' of Auction listing. @ INDICATES THE AD APPEARS IN SECTION 2 OF THE PAPER

DATE TIME AUCTIONEER/SRV.CITY TYPE PAGE/SEC. ZONE 2 MICHIGAN

Sat., Aug. 6	10am	Yoder Bros Auction	Lake, MI	Antq., Coll., Misc.	7
Sat., Aug. 20	10am	Hankins Auction Svc.	East Jordan, MI	Miscellaneous	13

ZONE 3 MICHIGAN

Sat., Aug. 6	10am	McKenzie Auction	Alpena, MI	Equip., Tool, Misc.	3
--------------	------	------------------	------------	---------------------	---

ZONE 4 MICHIGAN

Thu., Aug. 4	Noon	Art Smith Auctions	White Cloud, MI	Miscellaneous	11
Fri., Aug. 5	4:04pm	Claud McMillen Auct.	Battle Creek, MI	Estate	14
Sat., Aug. 6	10am	Beyer Auction Service	Hesperia, MI	Personal Property	14
Sat., Aug. 6	10am	Dales Auctioneering	Fennville, MI	Miscellaneous	11
Sat., Aug. 6	10am	Hanson Auction Svc.	Morley, MI	Estate	13
Sat., Aug. 6	9:30am	Stantons Auctioneers	Kalamazoo, MI	Antique	2

ZONE 5 MICHIGAN

Sat., Aug. 6	10am	Mel White Auctioneer	Mason, MI	HH, Coll., Misc.	11
Wed., Aug. 10	6pm	Spieth & Satow	Waldron, MI	Real Estate	14

Cord

FROM PAGE 6

back then.”

The Experimental’s journey to restoration started when the body – from the end of the hood backward – was discovered in a barn near Chicago. It was found by Paul Bryant, a Cord historian, Grate said.

When it was found, the body was missing the engine, fenders and radiator shell. The fenders and radiator shell were found in other states, but the engine, it turns out, hadn’t strayed far from home.

“The engine was found not more than 500 feet from where it was produced,” Grate pointed out. “The Auburn Automobile Co. had a power plant on the same grounds, and the Cord V-12 engine was in that building as a backup generator.”

Bryant began restoring and reconstructing the Experimental in 1986. He donated the car to the

museum in 2004. Bryant died in 2013.

“I think (Auburn Cord Duesenberg) members probably helped him to be on the lookout for parts,” Grate explained. “There were a number of side drawings, renderings and measurements to go by.”

The hood had to be reproduced, he noted, and the wheels were fabricated for the restoration. The frame is from a production L-29 and was lengthened to fit. When found, the body’s interior was down to the wood framing where the seats would be, Grate added.

“The majority of the exterior is as close as we can get,” he said. “As far as we know, all the parts out there have been found.

“The color is similar to what it probably was. When the body was found in the barn, they did the 1980s version of color matching and came up with that color. It’s pretty close.”

The Experimental

has a window between the driver’s area and the passenger section. The body interior had a slot that made sense for the window to be there, Grate said.

The car has about 780 miles on it. He said it does run, but it’s not driven because it has an L-29 transmission, which isn’t made for an engine as large as what’s in the Experimental. “The sound it makes when running is different from cars today. It’s definitely audible within the cabin. In those days, you could definitely hear the transmission whining when driving and shifting.”

The Cord Experimental isn’t the only one-of-a-kind car at the museum. The collection includes a unique Duesenberg Model X speedster. In 1927, five Model X cars were built – the one speedster, plus two sedans and two phaetons, Grate said.

“The Model X was an experimental production

CATEGORIES	• Computer	• Firearm	• Industrial	• Office Equip.	• Sports
• Antique	• Consignment	• Food	• Jewelry	• Personal Prop.	• Tag Sale
• Business/Commercial	• Doll	• Furniture	• Lamp	• Pottery	• Tool
• Clock	• Equipment	• Glass	• Livestock	• Primitive	• Toy
• Coin	• Estate	• Government	• Musical	• Quilt	• Vehicles
• Collectible	• Farm	• Household	• New Merchandise	• Real Estate	

DATE	TIME	AUCTIONEER/SRV. CITY	TYPE	PAGE/SEC.
Sat., Aug. 13	9am	Pioneer Auction Svc.	Mount Pleasant, MI Farm Equipment	13

ZONE 6 MICHIGAN

Tue., Aug. 9	10am	Braun & Helmer	Saline, MI	Tools, Equip., Misc.	11
Sat., Aug. 13	11am	Schmidt’s Antiques	Ypsilanti, MI	Americana	8

ZONE 12 OHIO

Aug. 12 & 13	10am	Whalen Realty & Auct.	Grand Rapids, OH	Multi Estate	9
--------------	------	-----------------------	------------------	--------------	---

ZONE WEB

•	•	Auction City	Online	Equipment	3
•	•	Rowley	Online	Estate, Consignment	3
•	•	RJM Auctioneers	Online	Antq., Toy, Coll.	3
•	•	Vanderkolk	Online	Equip., Tool	3
Tue., Aug. 9	•	Repocast	Online	Semi Truck, Trailer	13

ZONE CALENDAR

Every Wed.	9am	Trading Place	Shipshewana, IN	Miscellaneous	16
•	•	Geyer Farm	Williamston, MI	Consignment	14

Need to Contact Us? Call: 1.888.339.3795 ext. 134
E-mail: info@eauctionexchange.com



Above: The color on this restored and reconstructed 1932 Cord Experimental is probably close to the original. (Michele F. Mihaljevich photo)

line between the Model A and Model J,” he explained. “It was experimental filler.”

The museum is housed in the 1930s national headquarters of the Auburn Automobile Co. The art deco building is a National Historic Landmark. The museum has a collection of more than 120 classic, unique and antique cars. It owns the majority of cars in the collection, while others

are on loan. About 50,000 people visit the museum annually, Grate said.

A new, permanent exhibit – the E.L. Cord Gallery of Entrepreneurship – is scheduled to open by the end of August, he said. Cord was hired in 1924 as the Auburn Automobile Co.’s vice president and general manager. He became president and

majority stakeholder by early 1927.

Other current exhibits include those focusing on John Dillinger, contemporary automobile and motorcycle painting, and car mascots and hood ornaments. For more information about the museum, including hours and admission fees, visit www.automobilemuseum.org.



MOVING AUCTION

Due to selling my Lake Home, the following will be offered at Public Auction. Located: 1 mile west of Lake, MI on Eight Point Lake Rd. to Cook Rd., South ½ mile to Crooked Lake Dr., East ½ mile to sale site – 1071 North Crooked Lake Drive, Lake, MI. Follow Yoder Bros Auction Signs!

SATURDAY, AUGUST 6TH, 2022 @ 10:00 A.M. • LAKE, MI



PONTOON and BOAT LIFT

- 2007 QUEST 717-22 17' Pontoon with Canopy, MERCURY 25 HP EFI 4 Stroke Motor, and GENESIS Pontoon Trailer.
- SHORE STATION Boat Lift w/Burgandy Cover and Hardware.

GOLF CART and GARAGE ITEMS

- E-Z GO Textron Gas Golf Cart w/back seat
- HUSKEE 8 HP 28" Snow Blower elect. start
- C.M. Push Mower • 2 Mountain Bikes • Central Air Compressor • TORO Elect. Blower
- HOMELITE Elect. Chain Saw • REDDY Heater, 60,000 BTU • POWER BACK 5000 Watt Generator • Gas Grill • Log Chains • Ice Fishing Gear • Red COLEMAN Lanterns • Flower Planters • Wood Ladders • Cement Donkey • Trailer Ramps • Assorted Gas Cans • Posthole Diggers • Shovels • Garden Tools • Tree Saw • Pruning Clippers • Lawn Chairs • Galv. Watering Cans • MISC. GOODIE WAGON

ANTIQUES and COLLECTIBLES

200+ SILHOUETTES COLLECTION
INCLUDES: Oval, Oval Glass, Colored,

- Victorian, Vintage, Shadow Box, Silhouette Tins, Plates, Beatles Tin, Silhouette Advertising Thermometers, & Ships • Leaded Glass Silhouettes • White Metal Porcelain Kitchen Cabinet • Vintage Porcelain Gas Stove • Humo Tobacco Tin • Wooden Trunk • Green Vintage Ash Tray w/Pedestal • Primitive Kitchen Hutch • Coffee Grinder • COCA COLA Advertising • SINGER Sewing Machine Sign • Jars of Buttons • Cream Can • Variety of White & Red, White & Black Granite Ware • Granite Kitchen Utensils • Green Handled Kitchen Utensils • Match Box Collection • Candy Machines • Ass't. Cocks • Vintage Lamps • Glass Marbles

For 100+ Photos see GoToAuction.com/2109

AUCTIONEERS NOTE: Pontoon and larger items selling at approx.. 12:00 Noon. Selling in 2 auction rings part of the time. Featuring many interesting and unique items. Plan on attending this nice clean auction on Crooked Lake! Hope to see ya there!... LeRoy

Yoder Brothers Auction Service
Specializing in Successful Auctions
Auctioneers: LeRoy and Willis Yoder
9484 S. Rogers Ave., Clare, MI
PH: 989-386-9082

- Milk Bottles • Glass Lid Jars • Wicker Table
- Wicker Corner Shelf • Wicker Bathroom Display • Wicker Bench & Chairs • Metal Ice Box • WAGNER Cast Iron Corn Trays • Glass Lamps • Mini Bells • Quantity of Hard and Soft Cover Books • Music Albums • Ass't. Wall Picture Frame Prints & Paintings • Ass't. Elect. Globe Lamps • Kerosene Lamps
- ANTIQUE and COLLECTIBLE FURNITURE
- Oak 2 Door Corner China Cabinet • Square Glass Sided China Cabinet • Corner Kitchen Display Hutch • Oak Wall Phone • 2 Barrister Book Cases • Victorian Childs Day Bed • Victrola Phonograph w/cabinet & Records •

- Oak Wall Clock • Oak Hall Tree Bench w/mirror
- Round Oak Pedestal Table & Chairs • Ladies Secretary Desk • Wood Swivel Office Chair • Serving Cart • Oak Ice Box Style Entertainment Center • Oak Settee • 2 Red Victorian Style High Back Chairs • 1950's 3 pc. Bedroom Set • Double Bed w/Canopy • 1960s 3 Pc. Bedroom Set • Curve Front Dresser • Chest of Drawers w/Mirror • Assorted Night Stands • Brown Padded Couch & Chair • Green La-Z-Boy Recliner • Sewing Machine w/Cabinet • Panio Stools • Conn Pump Organ • Metal Single Bed • Cedar Chest • Oak Commode • Vintage YoYo Quilt • GE Elect. Fridge • Flat Screen TV

GLASSWARE COLLECTIBLES

- Bone China Royal Albert Tea Set – Cups & Saucers • 100+ Pieces Hobnail Fenton Ware Collection • Green Depression Plates • Salt & Peppers – Etc. • Ass't. Pink Depression Glass • Flow Blue Plates • Floral Pattern Bowls & Dishes • Leaded Crystal Glass • Pink Vitex Glass Knife w/ box • MANY MORE ITEMS TOO NUMEROUS TO MENTION!

Schmidt's

Auctioneers Since 1911

ANTIQUE AMERICANA AUCTION

SATURDAY, AUGUST 13th at 11:00 AM

LOCATION: SCHMIDT'S ANTIQUES INC. 5138 WEST MICHIGAN AVE.

YPSILANTI, MICHIGAN zone 6

Americana and Country Store Collection including many items from Two Ann Arbor Estates and Private Collections.

INCLUDES:

19th c. American Furniture including Curly Maple, Country Store Showcases and Merchandise, Hanging Lights & American Kerosene Lighting, Children's Items Including Toys, Wind-up Cars, Banks & Games, General Store Advertising Signs, Trade Stimulators & more!

COME BID LIVE!

Enjoy Food & Refreshments while we sell over 360 lots.

Bidding also available online at Liveauctioneers.com

This is an Auction with Live, Online, Absentee and Phone Bidding Available – Visit our website for more information.

25% Buyer's Premium on all lots

Preview open 9am-5pm on August 6th & 7th, 9th-12th

Credit Cards accepted without penalty. Absentee bids accepted. Food available.

Watch our website for more information on our Annual October 1st Clock Auction.

Schmidt's Antiques, Inc.

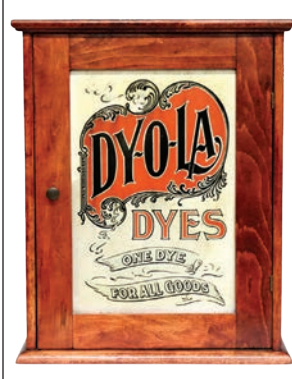
5138 West Michigan Ave. • Ypsilanti, Michigan
(734) 434-2660

Since 1911

Call Toll Free 855 MI AUCTIONS

Call us for Consignment Information • We pick up anywhere in Michigan!
These are live auctions with worldwide online bidding!

www.SchmidtsAntiques.com



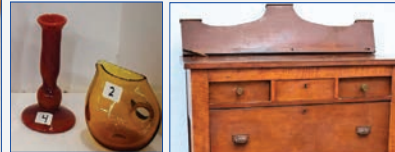
MULTI ESTATE AUCTION

FRIDAY & SATURDAY AUGUST 12 & 13, 2022 @ 10am
Held at Whalen Auction Bldg., 8020 Manore Rd. (gps Grand Rapids OH 43522)

Estate of Alex J. Pritscher, Wood Co. Probate 2022EST622, Dennis J. Pritscher Admin. Estate of Harold Brown, Defiance Co. Probate 20611 and others

FRIDAY-Ring 1-Glassware, Paperweights, marbles, collectibles

Ring 1: 170+ Paperweights; 300+ Marbles; Glassware: 5 pc's Labino, 4pc. Lonsway; colored, satin, Depression, colored opalescent, Fenton, pattern & pressed; hand painted; 15+ perfume bottles; **Furniture, Crockery, Clocks, & Primitives:** Early country armoire in old original red & mustard paint, original carved peg rack; early dresser; 15+ crocks & jugs; 17pc Pottery; 25+ banks; 30+ walking sticks & canes; Tuba, French horn; primitives; **Clocks; Costume Jewelry & more.**



whalenauction.com

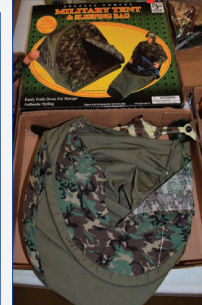


WHALEN
REALTY & AUCTION, LTD.

FRIDAY-Ring 2-Trains & Toys

Massive Amount of Trains, many NIB: American Flyer collection, over 100 locomotives incl. several 4-8-4's & 4-6-2's; Royal Blues; Silver Bullets; Diesels; Steam Line; 100's of cars & mechanicals!! "N", "O", "S" Gauge; HO scale; a lot of track, accessories, switches, transformers, Buildings, bridges, service stations; train sets; train related books & magazines; 60+ Keep-sake ornaments in trains & planes; plus more! **100+ models in cars & planes;** GI Joe dolls, clothes & accessories; board games & others; 4 Erector sets; Military vehicles; die cast cars; car tracks; puzzles; VHS tapes; Legos; Hotwheels & more.

Open week of auction from 8-3pm

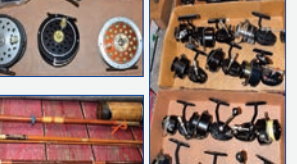
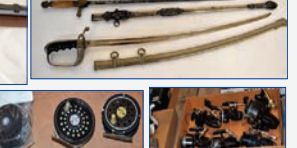
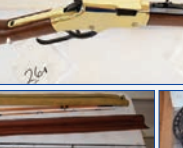
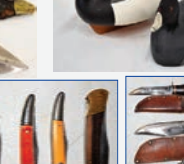
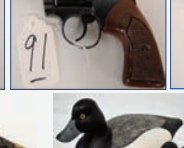
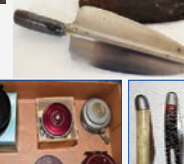
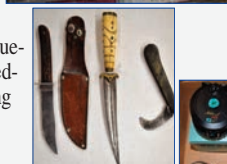


Trains from the Late Arthur Warner

Saturday-Ring 1-Firearms, ammo, fishing

Ring 1: Firearms, Ammo, Swords: 100+ Firearms, hand & long; Calvary sword; Civil War shovel bayonet w/scabbard; Crossman air Rifle & Pistol; holsters; Daisy BB gun Pistol; Nazi dress dagger; USMC Kabar knife; **Ammo:** 1500 rounds 9mm; 1000 Rounds 223; Colt black powder measure kit; **Fishing, Knives & Outdoor:** 175+ Fishing Reels- Johnson, Wright, McGill, Match, Heddon, Garcia, Shakespeare, Zebco, Daiwa, Penn Reels, Shimano, Pflueger, Quantum, Fin-Nor, Okuma, South Bend; **Flyrods-** X-Pert split bamboo fly rod No. 3, Hardys, Shakespeare Wonder, LL Bean double L, HMG graphite GFF857, Fenwick GFF906, Pflueger Purist PP8056, Berkley cherry wood Crc40, Browning graphite BPFS7645, Heddon Thorobred #55, Heddon Tubuler glass #702, South Bend 3260; 100's of fishing rods; tackle boxes; fishing line; 1000's of fishing lures; duck decoys; **Knives & swords;** amputate saw; plus more.

Firearms on display day of auction only! Out of state buyers require FFL transfer. Buyer must be at least 21 years

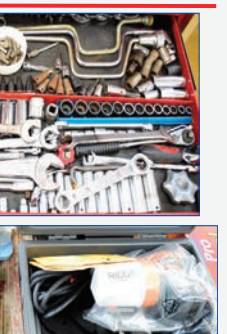
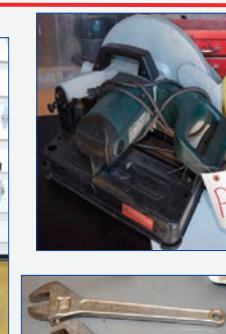
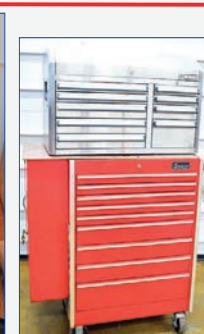
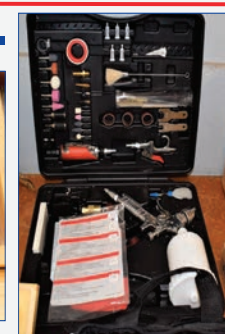


Saturday-Ring 2-Tools & Misc.

Ring 2: Tools & misc: Snap-On sockets 1/4 & 3/8"; Cornwell sockets 1/4 & 3/8"; Mac & Snap-On crowfoot; Cornwell 4-way angle wrench set 1 1/2" 1/4"; S&K socket; Craftsman sockets & wrenches; Steret dial indicators; Channel lock pliers; Vise Grips; Proto wrench set; micrometers; sheet metal tools; Blue point tap & die set; Snap-On 1/2" drive ratchet & breaker bar; Proto 18" adj wrench; Blue point 15" adj wrench; hammers; Snap-On 9 drawer single bay base tool box & side box; Kobalt 9 drawer double bay top box tool box; Snap-On display tool box; Snap-On T-shirts; 6 sheds- 40"x 88" inside, 51"x 99" outside, 106" tall; plus more!

419-875-6317

Terms: Cash or check w/ID., 3% processing fee on Credit/debit card. Lunch by Sandy's.

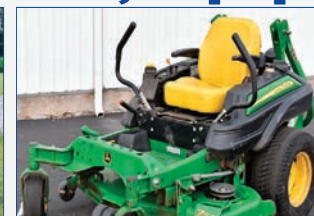


Saturday-12noon-Vehicles, Mowers, Equip.

Vehicles, Scooter & Golf Cart: 2014 Chevy Impala LT 30,400mi, 3.6L V6 VVT 1-owner; 2009 Pontiac G6 3.5L V6; 1997 GMC Blue Bird 16 passenger, 69,406 mi; 2005 Suzuki Burgman 400 14,549 mi. **Club Car gas golf cart;** Grumman 19' canoe & trailer; **Lawn Mowers & Equip:** 2018 John Deere Z930M 54" deck, 1245 hrs; 2003 Grasshopper 725, 61" deck, vac system, 4893 hrs; 4-Stihl chain saws; 2-Husqvarna hedge trimmers; Troy Bilt chipper/vac; Stihl blower; walk behind mowers; push mowers; 3-Toro 30" Timemasters; snowblowers; Tonaka edger; Craftsman shredder vac; 2 generators; plus more.



Open week of auction
from 8-3pm



whalenauction.com
WHALEN REALTY & AUCTION LTD

419-875-6317

Auctioneers: John & Jason Whalen, Mike Murry, George Bly & Jacob Ramos
Information herein deemed reliable but not guaranteed



Traylor

FROM PAGE 1

high bid of \$15,000.

A vibrantly colored orange and royal blue glass sculpture by artist Dale Chihuly, American, b. 1941 showed off the imaginative flair he is known for. Measuring 11 by 8 by 6 inches high, the piece was titled “Seaform” and featured waves, ribbon patterns, and other eye-catching shapes. This fragile masterpiece closed with a high bid of \$7,500. Chinese/American artist Chuang Che created a free-form landscape piece numbered “102”. His work combines influences of his Chinese heritage with abstract concepts. This 1978 48 by 35 inch piece done in shades of tan, gray, and white left with a final bid of \$6,000.

A massive turn of the century Italian Renaissance Revival Period walnut buffet featuring exten-

sive hand-carved detail justifiably lead the furniture category. Measuring 124 by 28 by 113 inches, this impressive masterpiece included a stepped, molded crown. a central stained glass door with fleur-de-lis detail, carved songbirds, masks and floral decoration, three carved drawers, and outer full bodied cherub supports plus so much more. This elaborate item was constructed to completely disassemble for moving. Fortunately, shipping was not required, as it sold in house for a final bid of \$4,500. Fans of intricate carved detail had another chance with a 19th century French oak hall bench that included rampant lion figures over a carved scenic back panel depicting St. George and the Dragon plus many other related details and a lift seat. Despite areas of wear and minor edge damage, this 60-inch tall bench closed with a final bid of

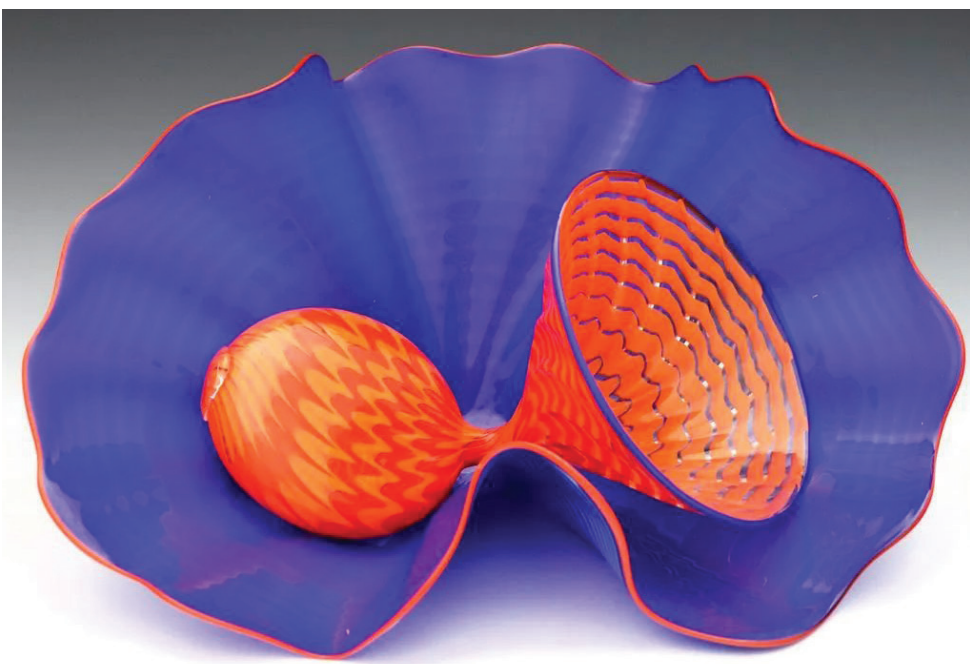
\$1,900. Tabletop accessories were plentiful and very beautiful. This included the turn of the century Austrian Loetz Art Glass vase done in silver/blue Phaenomen decoration on a green iridescent body with pinched rim. This elegant specimen appropriately drew a final bid of \$4,000. An early 20th century Roseville Rozane “Della Robbia” line Art Pottery vase designed by Frederick Hurten Rhead featured multi-color glaze and incised decoration depicting Arts and Craft style trees. Standing 10 inches tall, it earned a final bid of \$2,900 despite having been drilled for use as lamp. An unusual 20th century Royal Doulton, England, “Princess Badoura” porcelain figure depicted the princess atop an elephant with multi-color glaze decoration and fine gilded detail. This 1985 creation standing 21 inches tall finished with a high bid of \$1,600. Lots consisting of a pair of Herend Foo dogs and another with four assorted Herend animals left for \$800 each.

Ten valuable gold coins were presented, including two 1975 South African gold Krugerrands. These highly-traded items, showing minor surface wear, drew final bids of \$1,600 each, slightly below the expected estimate. The other eight gold coins were all restrike 1915 commemorative Austrian 100 Corona gold pieces, which each independently achieved a final bid of \$1,500.

Eight handsome clocks were offered that would complement any décor

Left: To illustrate the wide range of collectors, this Royal Doulton “Charlie Chaplin” jug proved popular with a final bid of \$450.

Below: This masterpiece Italian Renaissance Revival Period walnut grand buffet sold in house for a final bid of \$4,500.



Above: Titled “Seafoam”, this royal blue and orange glass sculpture by Dale Chihuly closed with a high bid of \$7,500.

Right: This elegant Austrian Loetz Art Glass vase done in silver/blue Phaenomen decoration drew a final bid of \$4,000.



while providing a useful service. Standing 21 inches tall, an early 19th century Ansonia “Imperial” model brass mantel clock featured a porcelain dial with Roman numerals and many handsome flourishes. Even with some cosmetic damage, this handsome time piece drew a final bid of \$750. For a completely different look, there was a French mantel clock housed within a hand-painted porcelain shield featuring a knight and castle motif with Halberd supports. This 18 inch tall artwork finished with a high bid of \$225. Something rarely seen, an appealing late 20th century brass Looping Turtle desk clock that housed the clock face beneath the hinged shell on the turtle’s back. Taking up only 5 inches on the desktop, this

unusual item finished at \$150.

There was so much more and such a variety, from sterling silver to bronze figures and all manner of home furnishings. Two figures help illustrate the range of items available. There was a graceful Cybis “Lady Godiva” 13 inch bisque porcelain figure in pastel tones with gilded accents that finished at

\$450. At that same closing bid there was an 11 inches tall Royal Doulton “Charlie Chaplin” jug in a green three-piece suit with cane and removable bowler hat that left for \$450. Truly something for every collector.

Information on upcoming Schmidt auctions can be found at www.schmidtsantiques.com or call their office at (734) 434-2660.



Above: Carved wood furniture was very popular, with this 19th century French hallway oak bench drawing a final bid of \$1,900.

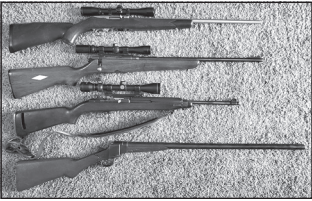
LIVE ON-SITE PUBLIC AUCTION
THURSDAY, AUGUST 4th @ 12:00 PM

LOCATION: 3471 E. 1 MILE RD.
DIRECTIONS: From Grand Rapids take M-37 north 40 miles to the stoplight in White Cloud (E. Wilcox Ave., M-20) east 3 miles to Thornapple Ave., north 1 mile to 1 Mile Rd., then west. OR from Big Rapids take US-131 south 8 miles to the Stanwood exit #131, west on M-20 (8 Mile Rd.) (following the curve to the south as the road turns into E. Baseline Rd.) 14½ miles to Thornapple Ave., north 1 mile to 1 Mile Rd., then west.
WHITE CLOUD, MI 49349 (Newaygo Co.) zone 4

Mable Paulsen, due to the death of her husband Erwin Paulsen & with plans of moving, will sell the following overview:
1968 Ford 4000 gas w/loader (loader needs repair); 1950 Farmall Cub w/Woods 60" belly mower; 3pt & Farm Equip; Yard Décor & Scrap Farm Equip; 1972 Honda 70 trail bike; 2003 Polaris Sportsman 335 4X4 automatic quad; Yamaha Kodiak 400 4X4 quad; Yamaha gas golf cart; 2001 Ford F150 XLT 4X4 pickup; 1994 Ford F-250 XL 4X4 pickup w/6-way snow plow; Sev. trailers; Large Complete workshop full of Power & Hand Tools; Acetylene torch set; Welders; Lawn & Garden Tools; Saginaw Steering Gear M1 Carbine; Other Guns; Shooting supplies; 8'X16' hip roof storage shed; 100+ NASCAR 1/24th scale model cars (new in boxes); Farm Primitives; Newer Appliances; Clean Furniture; Household Items; Scrap Iron.
2 Auctioneers at 12:00 PM, Inspection Auction Day at 9:00 AM



Visit www.artsmithauctioneers.com
or call Noah 616-633-4254



ESTATE AUCTION OF FRANK PARKER

Full Shop with Large Selection of Tools & Equipment

TUESDAY AUGUST 9TH @ 10AM



LOCATION: 1075 BEMIS RD.

DIRECTIONS: Take I-94 or US -23 to Michigan Ave Exit and go west to Moon Rd (Moon Rd is State St North of Michigan Ave). Take Moon Rd South to Bemis rd and turn right (West) to auction - Lots of onsite parking.

SALINE, MI zone 6



2008 Audi A4 Truck Conversion * Massey Ferguson 2300 4WD diesel Tractor with 2350 Loader * 3 Pt equipment incl. Land Pride 1050 Rototiller & Snowblower * Large Selection of Tool Boxes * Welders * Generators * 3 Car Lifts * Woodworking Equipment * Electronics * Hand Tools & Power Tools * Jacks * Stands * Nut & Bolt Bins * Much More!



Braun & Helmer
Auction Service
Complete Details with Pics @
BraunandHelmer.com
David Helmer 734-368-1733

M/M GARY ELZTROTH
AUCTION

SATURDAY, AUGUST 6, 10:00 AM

LOCATION: 244 S. EVERY RD.
DIRECTIONS: M36 3.2 miles east of Mason to Every Rd. then north to the sale.

MASON, MICHIGAN 48854 zone 5

We have sold our home and will sell the following at public auction:

HOUSEHOLD: Oak trestle dining table w/4 chairs; Cochrane couch, occasional chair, hassock; Wrought-iron end tables; Hitachi FX6404 VCRplus; Sony Audio/video receiver; Wall art; Oak sofa table; Tile top dinette table w/4 chairs; Samsung 55" TV; Samsung sound bar; 1917 Singer walking foot sewing machine Model 15-915 (good condition); Deck furniture; Water fountain; Cement bench; Cement table & bench; Fence deco & art items; Spartan metal helmet; 4 twin beds; Blanket chest; 2 Metal nightstands; 4 Pc Oak bedroom set w/queen bed; Bottle tree.

OLD THINGS & COLLECTIBLES: Fiesta dish set; Oak Empire chair; Amuroil wire rack; 9 Rodo Boulanger pictures.
GARAGE: Craftsman rolling toolchest; Husqvarna YTH3348 rear bag lawn tractor; Werner combination ladder; Estway combination ladder; 16' Aluminum extension ladder; Karcher electric 1600psi power washer; Yard tools.

CONSIGNED BY ALE MORY: Texas Instrument Home Computer 99/4A NIB; 1948 Dodge car radio; Olds radios & antennas; Royal Salad Dressing jug Detroit; John Deere bicycle; Pair of MC speakers; Canvas tent; Assorted old toys; Cast-iron dog door-stop; Other items too numerous to list.

TERMS: Cash, check credit cards. All items will be sold as is. The seller nor the auctioneer will be responsible for accidents day of sale or items after sold. A very clean sale, most items are in excellent condition.



Mel White
Auctioneer & Appraiser
Okemos, MI
517-394-3006
E-Mail: melw21588@gmail.com
Web: www.melwhiteauctioneer.com

PUBLIC AUCTION
SATURDAY, AUGUST 6 – 10:00 A.M.

LOCATION: 4925 118TH AVENUE.
DIRECTIONS: From M-89 in Fennville – 57th Street south 3 miles to 118th Avenue-East 3.3 miles.

FENNVILLE, MICHIGAN zone 4

Oklahoma Joe's smoker/grill; Budweiser charcoal grill; garden planter wagon; Poulan PRO 27" snowblower 254cc - LIKE NEW; Husqvarna & Craftsman chain saws; Toro weed trimmer; Dremel; Smoky Mountain smoker; cast-iron pot & fry pans; gas cans; Sinclair oilcan & oilers; live traps; beer mirror signs - Bud Lite, PBR, Coors; large "Chucks Meat Market" tin sign - fair condition; weather vane; Chevy emblem; wrought-iron patio set; garden wagon; bikes - Hawthorn, Elite Classic, Road Master AMF; wall hanging pay telephone; GM truck fender; camping supplies - tent, chairs, coolers; 6 gallons of NEW paint; lawn blow up - God Bless America; Jug, spinning wheel; metal bed/cot; vintage ceiling light fixtures; Pequot advertisement wood box; school desks; washboard; MANY liquor decanters; Westclox pocket watch; sports memorabilia - Mickey Stanley bobble head; Franklin Mint Majestic American Eagle - 1st edition; matching sofa & oversize recliner chair; dinette set w/6 chairs; vintage china cabinet & buffet; iron bed; white 5-drawer tall dresser & nightstand; 6-drawer dresser w/mirror; day bed; high top drop dinette table w/4 chairs; cedar chests; coffee table and end tables; wood rockers; 12-quart roaster pan; electric skillet, crock pot, various small appliances; ProForm 520 treadmill; inversion table; Howard Miller mantel clock; 8pt buck mount; Insignia flat screen TV; hand-painted Spain "Fresh" tea set; stained glass hanging; cuckoo clocks; lots of home décor; large glass containers; various table lamps; snow show lamp; anniversary clock; Waterford crystal glasses; electric fireplace; Shark vacuum; entertainment center; tin boiler; cookie jars; chocolate fountain; canning jars; 78rpm records; baker's rack; Ninja Foodi pans; general kitchen items - dishes; Pyrex.

MANY PRINTS: Ted Blaylock - Save the Eagle Purple Mountain Majesty, Proud & Free, From Sea to Shining Sea; Hayden Lambson Den Mother; Jim Hansel Resting Place; Kevin Daniel Wild Ones; Dave Barnhouse Yesterday's Heros; Robert Kelly Bald Eagle.

AUCTION NOTE: Owner is moving out of state and is selling entire contents of barn and house. All sold to highest bid. Payment cash, check, credit card (5% fee).



DALE'S
AUCTIONEERING SERVICE, LLC
Dale Flokstra, Auctioneer
(616) 836-3132 OR (616) 218-7391

www.dalesauctioneering.com



Pook & Pook Inc.

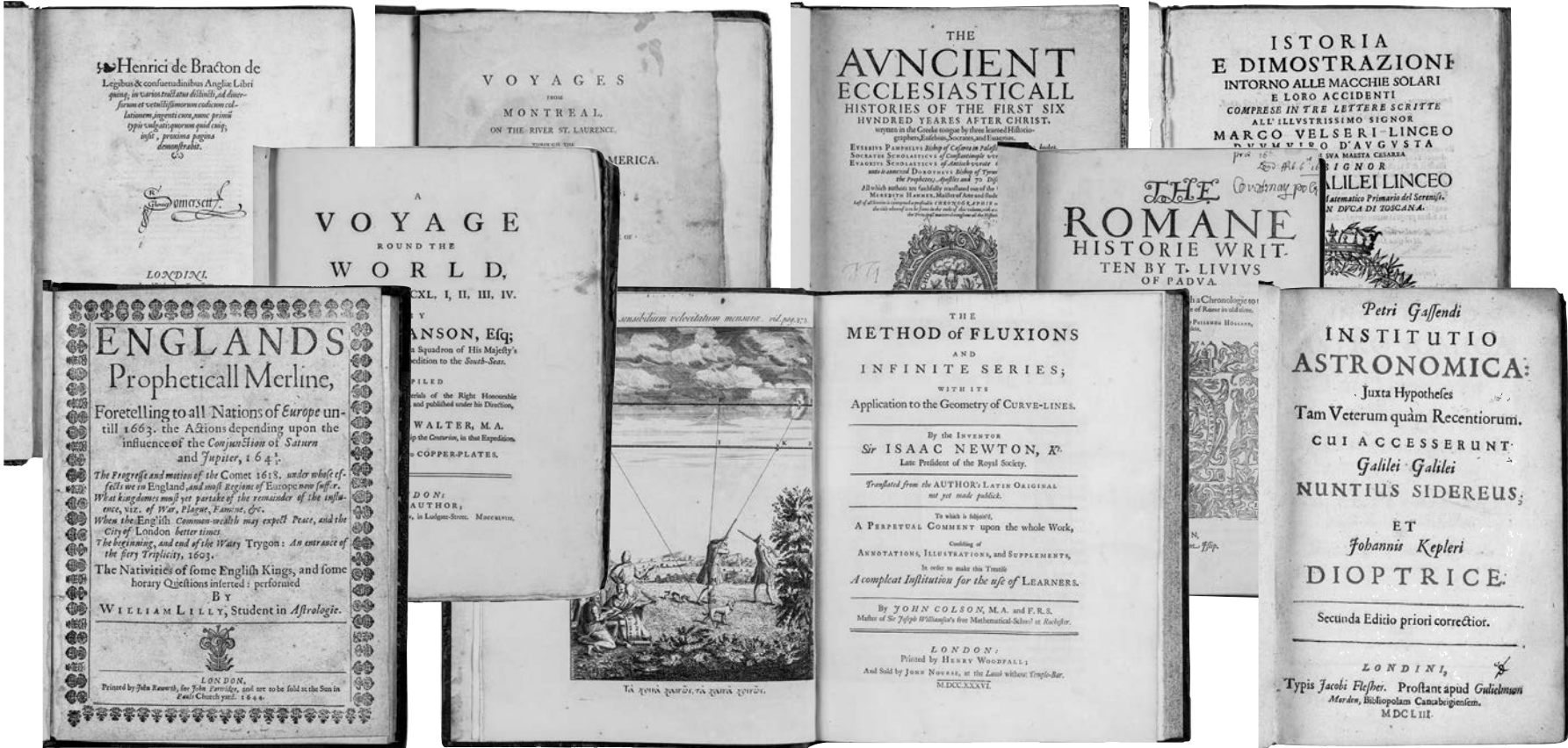
463 EAST LANCASTER AVENUE
DOWNTOWN, PENNSYLVANIA 19335
P: (610) 269-4040
INFO@POOKANDPOOK.COM
WWW.POOKANDPOOK.COM
ONLINE BIDDING AT
POOKLIVE, BIDSQUARE, & INVALUABLE

AY000004L

AUCTIONEERS AND APPRAISERS

PHOTOGRAPHY, PRINTS & EPHEMERA

AUGUST 17, 2022



AMERICANA & INTERNATIONAL

OCTOBER 6 & 7, 2022



American portrait



Charles Henry Demuth



Ithaca mantel clock



Chester County spice chest on frame



Large collection of New York stoneware



William Aiken Walker



Johann Berthelson



Oil on canvas of the Ticonderoga

SEMI-TRUCK & TRAILERS ONLINE AUCTION - TUESDAY, AUGUST 9

zone
web

FEATURING:

- 2013 Volvo D11 Semi-Truck
- 2010 International DuraStar 4300 Box Truck
- 2007 Freightliner Century Classic Semi-Truck
- 2003 International 4300 Cab and Chassis
- 2008 Strick Dry Van Semi-Trailer
- (2) 2008 Wabash 53' Dry Van Semi-Trailers
- 2007 Utility Reefer Dry Van Semi-Trailer
- 1998 Trailmobile 53' Dry Van Semi-Trailer
- Plus much more



MIEDEMA'S REPOCAST

For detailed
information & to bid
visit Repocast.com
or call 616-261-4988

GODBEHERE LIVING ESTATE AUCTION SATURDAY AUGUST 6TH, 10 A.M.

19270 1 Mile Road, **MORLEY, MI 49336** zone 4

DIRECTIONS: From Morley: head west on 4th St. toward Deyo Dr. turn left onto South Cass St. 450 feet turn right onto 3rd St. 0.9 miles turn left onto 190th Ave. 0.5 miles turn right onto 1 mile Rd. 0.3 miles to sale site.

This auction has several nice tools, including welding tools. This auction also includes a nice John Deere 316 and cab w/snow blade, lumber, and trailers.

OUTDOOR SHOP RELATED

John Deere 316 w/cab, snow blade
Cub Cadet commercial zero turn 50" deck needs work
Simplicity 3314 V riding lawn mower w/rototiller
John Deere TR532 walk behind snowblower
5 hp Briggs & Stratton wood chipper
21' Double axle goose neck cargo enclosed, tip down door trailer
20' single axle enclosed trailer
23' double axle flat bed goose neck trailer
4' small trailer w/sides
12' aluminum fishing boat w/ trailer
Sebastian Lath Company metal lath
Upright Sanborn single stage air compressor
Honda 13 hp pressure washer 3500psi
Engine hoist
Engine cherry picker
Lincoln ARC / tig welder Ideal ARC tig -250/250 variable voltage
Gas welder w/gauger, tanks
Freeport 14" wood cutting band saw
Craftsman 15" drill press
6" bench grinder Central Machinery

Echo SRM 225 weed whip
Chop saw
Air pressure sand blaster
2 metal hand shrinker and stretchers
Sheet metal shaper
Planishing Hammer "like new"
Portable gas welder
Metal bender
Kennedy tool box
Craftsman upright tool box
16 speed drill press
Craftsman belt/disc sander
Several tool boxes w/tools
Bench vice
Large crescent wrenches
3 ton chain fall
Shop lights on stands
Battery charger
Battery charger and starter
2 metal racks
Large shop stand 5 shelf on casters
Brace drill
Several jugs motor oil
3' and 8' wood stepladders
Transit w/stand
M18 lithium cordless grease gun
Milwaukee electric circular saw
Several drill bits
Misc. air tools
Water hose w/transfer pump

Misc. fishing poles
Trapping basket
Wood hide stretchers
Box of foot traps, stakes
Truck back rack
Diamond plate truck tool box
Large clevises
Several chains, straps, ropes
Large roll of 12/2 wire
Pile of metal conduit
Receiver hitches
Floor Jack
Log cant hook
Shovels, rakes

LUMBER

48 2X6X8' new pine
7 2X4X12' rough sawn
6 1X10X10' boards
4 2X10X10' rough sawn
2 2X10X12' pine
10 2X8X12' rough sawn
4 4X4X12' rough sawn post
4 sheets 1/2" chip board
Micro brew poly tank on stand
Glass carboys
Barley crushers
3 grow lights
Several blue barrels w/lids & buckets
Kenmore refrigerator
Masterbuilt propane smoker
Galvanized smoker

RYAN HANSON AUCTIONEER

TERMS AND CONDITIONS: Cash or good check with ID.
Nothing removed until settled for. Not responsible for accidents, lost or damaged items.

Verbal statements at time of sale take precedence over written document.

231-796-3784 or 231-250-9569

WEBSITE: ryanhansonauction.com

For a complete list and pictures find us on gotoauction.com ID #1959



No Buyer's Premium! **Good Used Equipment!**

AUCTION

Hutchins Farm Equipment Auction SAT., AUG. 13th, 9 AM SHARP!

Paul and Diana Hutchins have decided to retire and will be selling the following farm equipment and other items at public auction.

LOCATION:

AT THEIR FARM AT 402 W. CHAPMAN RD.

DIRECTIONS: From Mt. Pleasant at the intersection of Broomfield Rd. and Mission Rd. travel west 3 miles on Broomfield to the curve, turns into Whiteville Rd., travel south 2 miles to Millbrook Rd., then west 1 mile to Meridian Rd., then south 1/2 mile to Chapman Rd., then west 1/2 mile to sale site. From Blanchard travel east on Blanchard Rd. 2 miles to Nottowa Rd., then north 1 1/2 miles to Chapman Rd., then east 1/2 mile to sale site. Watch for Pioneer Auction Signs!

MT. PLEASANT, MI 48858 zone 5

**TRACTORS – INDUSTRIAL EQUIPMENT
COMBINES/HEADS – HAY/HARVEST EQUIPMENT
EQUIPMENT – PLANTERS/DRILLS
TRAILERS/TRUCKS – MISC. TOOLS**

Pre-Inspection Friday, August 12th, 5-7 PM

Auctioneer's Note: We would like to thank Paul and Diana for this opportunity. Sale will take place rain or shine. Tractors will sell around 10am. Loader available sale day and Monday morning the 15th from 8am to 10am. From the Hutchins Family and all of us at Pioneer, thank you in advance and we look forward to seeing you at this nice country auction! Jason

Contents Terms and Conditions: Cash, good personal check with proper ID, accepting Visa, MasterCard and Discover w/a 3% processing fee. All out-of-state checks must have a letter from bank verifying funds. All property to be settled for day of sale. No property to be removed from premises until settled for. Not responsible for accidents or goods after sold. Auctioneers and sale personnel act as selling agents only and assume no liabilities or guarantees.

PIONEER AUCTION SERVICE, LLC

JASON CLARK • (989) 621-7194



GUEST AUCTIONEER
BILL MARTIN



For more pics and info visit us on www.pioneerauctionservice.com



GUEST AUCTIONEER
ANDY HOSTETLER



Auction Time!!

Hankins Auction Service
H

LOCATION: 751 S. Advance Rd., East Jordan, MI zone 2

DATE: Saturday, August 20, 2022, registration at 9am, Auction at 10am

The Hankins Auction Service has been commissioned by Keith and Lynn Bulmann to conduct a **RETIREMENT AUCTION** on Saturday, August 20 at 10am. Keith has been a long time equipment dealer, and a long time auction buyer and seller, and he is closing out his dealer days and retiring! There is a great line of equipment, tools, supplies and also all of the household, as Keith and Lynn will be heading to Florida. Here's just a partial list of the items included: JD 3020 tractor (gas), 6' Jacobson mower deck, 7' back blade, 6 crates of field stone, pallets of brick pavers, truck flatbed, hay wagon bed, tires of all sizes (some new), JD 24T baler, Granholm cultivator, JD cultivator, JD "FB B" seeder, JD hayrake, NH hayrake, Int'l hay baler, 2005 Ford F350 diesel 4dr., with duals and gooseneck hitch, 175K miles "bullet-proofed", 2018 like new Load Trail gooseneck flatbed, 36ft with ramps, bought new in 2020, cement mixer, 3pt. 6' pulverizer, Diesel tank, 3-7' sickle bar mowers, JD loaders, large Air Compressor, 8'x 12' haywagon, Craftsman 10" radial arm saw, Country Clipper zero-turn mower, Troy Bilt power washer, Torches & Tanks, Lincoln welder, tool boxes, misc tools, Large collection of Taxidermy, **FURNITURE:** lawn furniture, grill, Windmill, LARGE BELL, cabinets, dresser, table & chairs, lamps, etc. **FIREARMS:** Remington Mod. 742 .30-06 w/accessories and scope, Crossman Vantage pellet rifle w/scope, "Arminius" .22 mag revolver w/additional cylinder, ammo, Remington knife. NOTE: Handgun buyer MUST have CPL or Purchase Permit.

We may be running 2 rings, bring a bidding partner! Still have barns to clear out and trailers to load!! Plenty of parking, bring your trucks and trailers, Call Scott @ 231-675-0852 for further information.



TERMS OF SALE: All items sell "AS IS/WHERE IS", with no guarantees or warranties implied or expressed. Hankins Auction Service accepts NO LIABILITIES for any items. Hankins Auction Service acts as sellers agent only. MI Sales Tax will be charged, unless Tax ID number is provided. Cash or "good" checks accepted, All items must be paid for DAY OF SALE, no items removed until paid for.

Check us out on GoToAuction.com to check out photos, Auctionzip.com and on FACEBOOK.



AUCTIONEERS NOTE: Loader will be on site, bring your trucks and trailers. **REGISTRATION at 9am, AUCTION at 10am. Nothing removed until paid for.**
FOOD AND PORTAJOHNS ON SITE!!
PLENTY OF PARKING!! WATCH FOR THE SIGNS, SEE YA THERE!!

Scott Hankins
Auctioneer/Owner
PH: (231) 547-0509
Cell: (231) 675-0852
sdzhankins@gmail.com

Flamingo

FROM PAGE 1

Flamingo flower frogs of every description were made from porcelain, glass, silver, and pottery.

The name “flamingo” is Spanish, flamenco, meaning “flame-colored.” There are six known flamingo species. The greater flamingo, the tallest known of the species, is the flamingo most people are familiar with, and it is the flamingo that was replicated by Don Featherstone in 1957 as the “plastic pink flamingo” used as lawn decoration. An interesting side note: Featherstone’s plastic pink flamingo won a Nobel Prize for cultural heritage in 1996 in the category of Art.

Beginning in the 1920s people purchased flamingo flower frogs to bring a part of the tropics into their homes. Pink flamingos remind people of exotic happy places. Pink flamingo décor symbolized both grace and beauty



Above: Ceramic pink flamingo flower frog that would truly bring a touch of paradise into any home.



Above: Ceramic, mid-century pink flamingo flower frog from Australia.

and allowed people to experience just a small touch of paradise. Many flamingo frogs depict a flamingo in its natural habitat. Colorful flamingo frogs also served as a natural way of displaying wildlife in and around a home, incorporating the ceramic display with flowers recently picked from the yard.

Collectors love searching for Rookwood, Cowan, Weller, and Roseville ceramic pieces, but very few mid-century or earlier flamingo flower frogs are marked. Also, low-end ceramic flower frogs were not always well represented in the bigger potteries. Most flamingo frogs were quickly produced for less expensive markets, and people purchased flamingo frogs for their decorative nature more than for the frogs’



Above: Vintage, lime green flamingo flower frog, circa 1940s – ‘50s. The 10 holes around the base of this 8-inch tall beauty hold flowers in a basin of water.

manufacturer. And don’t expect to find an abundance of pink flamingo flower frogs either. Pink clashes with many floral arrangements, so potteries and glassware companies produced quite a few flamingo flower frogs in amber, yellow, or shades of green.

Today, these fun, utilitarian pieces are considered artsy, but they are not art for art’s sake. For the most part, the collect-

ing field for ceramic and glass flamingo flower frogs is still wide open, and some of the nicest frogs are still to be found at estate sales, antique shops, and flea markets.

GEYER AUCTION SERVICE

**3040 DIETZ RD.
WILLIAMSTON, MI 48895**

**LIVE CONSIGNMENT AUCTIONS
ARE HELD
THE 2nd & 4th SUNDAYS
OF THE MONTH.**

**ONLINE AUCTIONS ARE HELD
EVERY 3rd SUNDAY
OF THE MONTH.**

**Email: Geyerfarmservice@yahoo.com
VIEW ONLINE: Geyerfarmservice.com
517-655-6343**

ESTATE AUCTION

FRIDAY, AUG. 5, 4:04 PM

**LOCATION: 19 SOUTH 30TH STREET.
BATTLE CREEK, MI** zone 4

OFFERING: Rolltop Desk, Side-by-Side Refrigerator, Hot Tub, CRAFTMATIC Bed, Single Beds, Recliner, Bedroom Furniture, Couch, Love Seat, Lamps, Nice Large Screen TV, Display Cabinet, Card Table and Chairs, Exercise Machines, Small Chest Freezer, General Household Items.

CRAFTSMAN XT 4000 Lawn Tractor w/Snowblower, 4x8 Utility Trailer, Yard Vacuum, Several Power Push Mowers, Wheelbarrow, Garden Tools, SHOPSMTIH Lathe, SEARS 12” Band Saw, CRAFTSMAN Stack Tool Chest, KENNE-DY Tool Chest, Air Compressors, JET Planer, Bench Grinder, Drill Press, LINCOLN 3200 Welder, Chop Saw, Belt Sander, Power Auger, Floor Jack, Chain Fall, Lots of Pneumatic Hand Tools, Large Dust Collector, Table Saw, Chain Saw Sharpener, RYOBI Shaper, 10’ Metal Brake, Misc Lumber, Fuel Cans, Bicycle, Golf Clubs, Antique Cash Register, Pipe Bender, Bar Clamps, Air Pig, Many unlisted items.

SHOE REPAIR EQUIPMENT: AMERICAN Stitcher, LANDIS Buffer-Polisher, SINGER Heavy-Duty Treadle Sewing Machine, Misc. Support Items.

SELLER: MARTIN L. BRENNER ESTATE

TERMS: Cash or check, NO CREDIT CARDS.

AUCTIONEERS

Claud McMillen Auction Co. Phone 269-209-4022 Family & Veteran Owned Since 1982	FOXVIEW Auctions Aaron Warner Phone 269-758-4200
---	---

PHONE NUMBER: 888-339-3795

Spieth & Satow

Auctioneers & Real Estate

AUCTION

Wednesday, August 10th @ 6:00 p.m..

REAL ESTATE

2 Homes * Garage * Large Corner Lot

From M-34 Take Waldron Rd South 8.8 miles to Center Street and turn Right (West) to the auction site at 205 & 207 West Center Street in...
Waldron, Michigan



Two Homes on a large corner lot for One Price!

Bertha Bailey Estate

FOR MORE INFORMATION: Contact Darin Spieth at 517-398-6060 or Dan Satow at 517-617-1104, or log onto www.spiethandsatow.com.

INSPECTION: Auction Day at 5:00 pm or by appointment with auctioneers.

REAL ESTATE TERMS: The high bidder on the property will be required to sign the appropriate purchase agreement and to deposit 10% down (unless prior arrangements are made with the auctioneer), balance at closing within 30 days. Statements made auction day take precedence over all printed and previously dispersed information. Property is selling AS-IS. Bidding on the property is not subject to or conditional to financing, inspections or bank approvals of any kind.

**Log onto
www.spiethandsatow.com
for more photos and information**

Darin Spieth Auctioneer	6 S. Howell Street Hillsdale, MI 49242 517-439-2528
Daniel Satow Auctioneer	Fax 517-279-4899 Hillsdale: 517-398-6060



PUBLIC AUCTION

HERIN BROS. TRUCKING COMPANY

SATURDAY, AUGUST 6 @ 10:00 AM

LOCATION: 8121 E. M-20.

DIRECTIONS: 2 miles W. of Hesperia on M-20. Watch for signs.

HESPERIA, MICHIGAN 49421 zone 4

Beyer Auction has been commissioned to sell to the highest bidder the following personal property belonging to Herin Bros. Trucking Company including Trojan 2500 wheel loader, TCM LP forklift, 1967 Volkswagen dune buggy, 9N Tractor w/loader, Farmall C tractor w/cultivators, L8000 Ford dump truck, 1996 Ford 3500 diesel auto with V plow, 2007 Chevy 5500 Dura Max transportation bus converted into RV. Power equip. including Snap-on Mig welder, bench grinders, floor jacks, torch set, battery chargers, drill press, trash pump, Snap-on mechanic tools, toolboxes, grease dispensers, office equipment, diecast collectible trucks and more.

(All items sold with no mins no reserves!!)

AUCTIONEER’S NOTE: See our website for complete list & pictures @ www.beyerauction.com two rings. Celebrating 49 years of service. **TERMS:** No out-of-state checks will be accepted. Cash or check with positive ID. Announcements take precedence over printed material. Not responsible for accident or loss. Lunch available.





(231) 854-1187 or (231) 750-2223
8016 E. Garfield Road
Hesperia, MI 49421
Beyer Auction/RE/MAX River Valley
344 Adams, Newaygo, MI 49337

Accepting Consignment Year
Round. 3 Sale Barns Available
For Consignment Auctions.



FLEA MARKETS • ANTIQUES
EDUCATION • WANTED
COLLECTIBLES • SERVICES
ANTIQUES SHOPS • SHOWS

CLASSIFIEDS

FLEA MARKETS • ANTIQUES
EDUCATION • WANTED
COLLECTIBLES • SERVICES
ANTIQUES SHOPS • SHOWS

ANTIQUES

DAVAL'S USED FURNITURE & ANTIQUES. 6 buildings with 15,000 sq ft of quality furniture, antiques and collectibles. SAVE TIME AND MONEY. SHOP DAVALS FOR THE BEST SELECTION, BEST QUALITY, BEST PRICE. YOU HAVE TO SEE IT TO BELIEVE IT. We are truly a destination place and worth the drive. WE BUY ESTATES. Layaway terms available. Visa/MasterCard/Discover accepted. 2 miles W. of Hastings at 2084 W M-43 Hwy near Bob's Gun & Tackle. Hours - Sun: 12-5; Mon-Fri: 10-6; Sat: 9-5. (269) 948-2463 S

SUNFIELD ANTIQUES, 196 Main, Sunfield, MI. Mention this ad and receive 10% off of any purchase of \$10 or more. Hours: Saturday 11-5. Phone 248-872-7277 (2237)

FOR SALE

FOR SALE: 8.6 wide x 24' box car hauler trailer, never used, 2008, kept inside, first \$10,000, 231-920-4253 (3422)

SERVICES

MIRROR RESILVERING: Quick Service. 313-521-1888. Frank Wright Glass, 14808 Gratiot. Detroit, MI 48205. Call for quotes. www.frankwrightglass.net S

WANTED

WANTED: Always buying rare antique motors. Outboard and inboard also early race boats. E-mail: bjoutboards@gmail.com 989-326-0727 B.J. Pawlaczyk S

WANTED WATCHES, PARTS: Watchmaker needing anything related. Old pocket, wristwatches, complete shops, tools, cases, equipment, cabinets, crystals, parts. I will haul. Large collections or small. Contact John 419-262-8866. Jewelry store buyouts also! sperrysburg@aol.com (2235)

WANTED: Corvettes wanted 1953 to 1967 any condition. Collections preferred. Paying a pirate's ransom! Email: terry@proteamcorvette.com Phone: 419-592-5086 (2237)

VENDORS

Free booth space available @ our annual antique advertising specialty show on March 18th, 2023. Located at the Indiana State Fairgrounds, Indianapolis. This is one of the largest markets for only 40+ year old advertising in the world. Signs, displays, clocks, and all other forms of vintage advertising.
For info: IAAshow.com
Contact: damongranger@gmail.com 5/22

Denotter Auctions
Weekly Online
Estate and Consignment Auctions
Antiques, Collectibles, Vintage
www.denotterauctions.com
224-392-3101

2006 FORD MUSTANG GT Deluxe \$29,000
This slick black 2006 Ford Mustang GT Deluxe is the perfect vehicle for your summer filled days. Includes a factory upgraded sound system, convertible top, leather seats, working AC and heat. This vehicle has little wear and tear. Extremely low mileage and the vehicle was always stored away during the winter months. Please call 231-920-4253 for more information.
EQUIPMENT
Driver air bag, passenger air bag, front side air bag, A/C, AM/FM stereo, CD player, ABS, 4-wheel disc brakes, cruise control, rear defrost, locking/limited slip differential, rear wheel drive, 8 cylinder engine, gasoline fuel, keyless entry, power door locks, power mirrors, power drive seat, bucket seats, power steering, adjustable steering wheel, traction control, aluminum wheels, power windows, intermittent wipers, fog lamps, power outlet, engine immobilizer, leather steering wheel, rear bench seat, convertible soft top. 3422

Feed Your Auction
Addiction With
The Auction
Exchange And
Collector's
News!®



Buying? Selling? Promoting?

TRY AN AUCTION EXCHANGE CLASSIFIED!

Classified ads are limited to Antique Shows & Shops, For Sale, Services, Education and Want Ads. • No auction ads or tag sales.

An Auction Exchange classified ad is only \$6.25 per week for up to 15 words and 25¢ for each additional word.

Please print legibly and include name, address or phone number & town as it will appear in print.

YOUR AD, AS IT WILL APPEAR

Name _____

Street _____ City _____

State _____ Zip _____ Phone _____

CLASSIFICATION: (i.e. Wanted , For Sale) _____ Please run my ad for _____ weeks.

_____	_____	_____	_____	_____
_____	_____	_____	_____	_____
_____	_____	_____	_____	\$6.25
_____	_____	_____	_____	\$7.50
_____	_____	_____	_____	\$8.75
_____	_____	_____	_____	\$10.00
_____	_____	_____	_____	\$11.00
_____	_____	_____	_____	\$12.25

All classified ads must be pre-paid
Please send ad with check made payable to The Auction Exchange • PO Box 90 • Knightstown, IN 46148-0090

Shipshewana

•TradingPlace•

Est. 1922

Shipshewana Auction

ANTIQUE & MISCELLANEOUS AUCTION

Every Wednesday, Year-Round at 9:00 am EST



The items pictured above sold in our July 27th Antique & Misc. Auction

Preview consignments at [AuctionZip.com](https://www.auctionzip.com)! Auctioneer ID #1945

We have seller space available. Call (260) 768-4129 to consign items!

www.ShipshewanaTradingPlace.com • (260) 768-4129 • 345 S Van Buren St, Shipshewana, IN 46565

URBAN SALVAGE VINTAGE MARKET

AUGUST 13TH & 14TH
9-5 9-3

VETERANS MEMORIAL PARK
BAY CITY, MI

OVER 100 UNIQUE VENDORS!!



ADMISSION
ONLY \$4
VETERANS AND
KIDS 12 & UNDER
FREE



For more info:
989-450-4004

 @urbansalvagevintagemarkets

LIVINGSTON
ANTIQUE OUTLET

is looking for
Experienced Antique Vendors!

Please stop by or call us at
517-548-5399 and ask to speak with
a manager.

*Come be a part of our wonderful dealer base,
and be "where the dealers shop!"*

Visit us at:
1825 N. Burkhart Rd., Howell, MI 48855

We have Back Cover
spots available for
2022.



Please call Lorri Egan at
1-888-339-3795 Ext. 134
for special rates
and information.

PROPERTY FOR SALE



1322 E. Monroe Rd. (M-50), Tecumseh, MI 49286
Located 0.2 miles from M-50 & M-52 Intersection

8,000 sq. ft. building + 2,100
sq. ft open space barn
(perfect for auctions or
events) + 2 pole barns



For more information contact:
Glenna Stroud-Howard Hanna
517-403-0455

Main building is divided into 3
large rooms & 21 open
partitioned rooms that could be
enclosed or removed, providing
versatility for use. Previously was
a furniture store then an antique
store. Would be great for doctor
or administrative offices!

This attractive property is located
on M-50 just 3 miles from
ProMedica Hickman Hospital.

