

# THE AUCTION EXCHANGE<sup>®</sup> And COLLECTORS NEWS

\$150

ANTIQUES • COLLECTIBLES • ESTATES • FARM • REAL ESTATE • COMMERCIAL

www.eauctionexchange.com

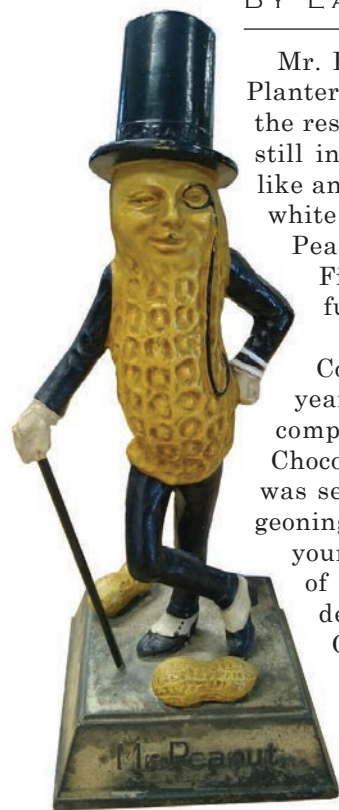
Nov. 9, 2021

Vol. 44, No. 48

## FEATURE

### Mr. Peanut is definitely a nut above all the others

BY LARRY LEMASTERS



Mr. Peanut is the advertising logo and mascot for Planters Peanuts, a snack food that is “a nut above the rest.” Mr. Peanut is an anthropomorphic peanut, still in its shell, that is dressed in formal clothing like an old-fashioned gentleman — top hat, monocle, white gloves, spats, and a cane. Born in Britain, Mr.

Peanuts’ full name is Bartholomew Richard Fitzgerald-Smithe, which is quite a mouthful, so he simply goes by Mr. Peanut.

Amedeo Obici founded Planters Peanut Company in 1906 in Wilkes-Barre, Pa. Two years later, he incorporated the company as Planters Nut and Chocolate Company. In 1916, Obici was searching for a logo for his burgeoning company. Antonio Gentile, a young schoolboy, submitted drawings of an anthropomorphic peanut to a design contest Obici sponsored. Gentile’s sketches won first place. Commercial artist Andrew S.

**Left:** Very rare, Planters Mr. Peanut advertising statue, circa 1930s, that was offered on eBay for \$721.



Wallach redrew the peanut man, adding the top hat, monocle, and cane, and Mr. Peanut, the iconic mascot of Planter Peanuts, was born.

Originally Obici paid Gentile a mere \$5 for winning the contest and providing a mascot that is still going strong over 100 years later. But as Paul Harvey might say, “Here’s the rest of the story.” Obici became friends with the schoolboy’s family and he paid for Antonio and all four of his siblings to go to college. Obici paid Antonio’s educational costs all the way through medical school, and Antonio Gentile became a doctor thanks to his early sketches of Mr. Peanut and Obici’s astounding generosity.

**See Mr. Peanut page 4**

**Left:** This Mr. Peanut rubber hand puppet, considered by some collectors to be the Holy Grail of Mr. Peanut collectibles, was offered on eBay for \$1,200.

**Right:** All-wooden Mr. Peanut doll with segmented arms and legs, circa 1930s, designed by Joseph Kallus. This doll sold at auction for \$250.



## FEATURE

### Swizzle stick collectors prefer things stirred not shaken

BY WILLIAM FLOOD

Are you one of those people who eagerly takes home the stir stick from your cocktail rather than tossing it? You are in good company. Those little plastic sticks are becoming sought-after pieces of bar memorabilia and some collectors have tens of thousands of them!

A little background is in order. What people often call a “swizzle stick” may not actually be one. Swizzle sticks have a bit of a different lineage than modern stir sticks and both differ from the smaller, less ornate garnish skewer.

Still, we are probably all in the same glass as the stick in your Sidecar can be traced to the 1600s in the colonial West Indies. Pronged branches of aromatic bushes like allspice and more commonly an evergreen known as Quararibea Turbinata (which became known as the “Swizzlestick Tree”) were used with a swishing motion to froth drinks. In his 1920s book, “A Guide to the West Indies, Bermuda and Panama,” naturalist writer Frederick Albion Ober described the swizzle and swizzling: “The stem of a native plant with



**Above Left:** The term “swizzling” refers to vigorously rotating a mixing tool between the palms of the hands to froth a drink. (Photo: Wikimedia Commons); **Above Right:** Many collectors specialize in a certain category of swizzle sticks. One popular group are those from airlines. (Photo: William Flood)

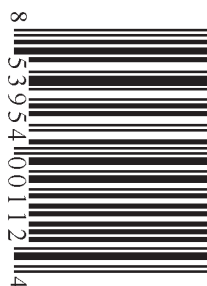


**Right:** Swizzle sticks run the gamut from very simple to very imaginative, like this array from Disneyland. (Photo: Wikimedia Commons)

radiating twigs, or roots...is revolved rapidly between the palms of the hands.” He added, “The combined action of the motion and a peculiar saponaceous quality of the twigs... produces a delicious froth.”

The tool was often used to blend a beverage called a

**See Swizzle Stick page 18**



8 53954 00112 4

**SINCE 1978 THE WEEKLY AUCTION & COLLECTORS  
GUIDE FOR THE GREAT LAKES REGION**



ROUTE 32 AUCTIONS

NOVEMBER 19 & 20 • 2021

# GAS & OIL

## AUCTION

Route 32 Auctions is proud to announce another premiere Gas & Oil Auction here at the Route 32 Auction House on November 19th & 20th, 2021. This is going to be another great show featuring a stellar collection of automobilia and petroliana as well as a large variety of neon signs and gas pumps. We would love to see you bidding in-person, but you can also bid by phone, by absentee, or online with Proxibid or Liveauctioneers. Doors open at 9AM EST with the auction starting at 10. Preview is available from 9AM to 5PM, Monday the 15th through Thursday the 18th as well as from 9AM to start of auction on Friday and Saturday.



Limited quantities of full color catalogs are available for \$20. Give us a call to order yours today.

765-307-7119 • [www.route32auctions.com](http://www.route32auctions.com) • 3097 East State Road 32, Crawfordsville, Indiana 47933



TRI-STATE

Farm, Construction & Municipality Equipment

Semi-Monthly Online Consignment Auction – MI, IN & OH

@ www.BidNow.us

zone web

Bidding Begins Closing Wednesday, November 17th



We are changing the name from our Statewide Auction to the 'Tri-State Equipment Auction' as we begin to expand into Indiana and Ohio.

To promote the expansion, we have signed up with 'Machinery Pete' to begin advertising consigned pieces of equipment on their database which will appear alongside the Nationwide Equipment Dealer Listings! What this means for our consignors, is that when someone searches a specific model tractor, or other piece of equipment, they will see what the dealers have available as well as the same models that are available on our auctions. Our Auctions are also now listed on Machinery Pete's Upcoming Auction Calendar, as well as banner ads throughout the website.

We are also beginning to advertise the Consignment Auction in Out of State publications with circulation in MI, IN, OH, IL, KS, MO and beyond!

Attention: In order to take advantage of this new partnership, we need your consignments early!

Visit our website to view updated list of equipment throughout the states and contact telephone numbers for inspection! Call the office if you need assistance placing your bid. We can place bids for you!

NOW ACCEPTING CONSIGNMENTS for UPCOMING

Tri-State Farm & Construction Equipment Online Auctions

@www.BidNow.us

- Leave equipment at your location – eliminate transportation costs!
- No commission charged to the seller! (Low entry fee.)
- Email photos and descriptions to us or call us to take the photos for a small fee.
- Give us a try and find out why thousands across Michigan and beyond are using our site to buy and sell their equipment!

BIDNOW

Albrecht Auction Service | www.BidNow.us | 989.823.8835

NEILS TRACTOR & EQUIPMENT REPAIR

Live On-Site Public Auction

SATURDAY, NOVEMBER 13th @ 10:00 AM

INSPECTION: Friday, November 12, 4:00 PM-5:00 PM

LOCATION: 6740 WILSON RD. COOPERSVILLE, MI 49404 (Ottawa Co.)

DIRECTIONS: N. of Coopersville or South of Ravenna on 56th Ave./Ravenna Rd. to Wilson, West 1½ mi. OR North of Grand Rapids 10 mi. or South of Big Rapids 42 mi. on US-131 to the Rockford/10 Mile Road exit #97 then straight West 17½ mi.

COOPERSVILLE, MI 49404 (Ottawa Co.) zone 4

After 40 years, Neil has retired from his tractor repair business, overview includes: **TRACTORS & EQUIPMENT:** 1955 Farmall 300; 1953 Oliver RC-77; 1940's Allis Chalmers C; 1940's John Deere LA; 1949 Allis Chalmers C w/snowplow; Minneapolis Moline Jet Star w/front loader; 1952 Allis Chalmers CA; 1967 IHC 504 diesel; 1977 Case 1070 diesel w/cab; 1959 Allis Chalmers D-17 diesel; 1947 John Deere H; 1950 Farmall M w/snowplow; Allis Chalmers ACC-30 propane warehouse hi-lo; Wheel Horse B-80 garden tractor; AC B-10 garden tractor w/attachments; MF 8 & 10 garden tractors; JD H 1 bt. plow; JD 14-T baler; NH 489 9' haybine; 3 pt. JD 2 bt. 14" plow; 3pt 6' 2 stage snowblower; IHC fast hitch 2 bt. 14" plow SHOP TOOLS: H. Bickford 220V large industrial flat belt drill press; Steel banding unit; Gas powered irrigation pump; Horizontal band saw; Gantry 14' wide & 12' high w/3-ton hoist; Lincoln Idealarc TM-300 arc welder; Koats pneumatic tire changer; Roll-a-bout tool chests; Hand & Power tools; Tractor parts & manuals & more.



Visit [www.artsmithauctioneers.com](http://www.artsmithauctioneers.com) or call Noah 616-633-4254



JOHN PECK

AUCTIONS

AUCTIONEERS FOR OVER 40 YEARS

\*\*\*\*\*

UPCOMING AUCTIONS

\*\*\*\*\*

Precision Excavating Online Retirement Auction

Bidding Is Open & Closes Tuesday, November 9

This Sale Features: Cat 312CL Excavator, Cat D4GXL Crawler Dozer, Cat 416B Loader/Backhoe, Cat IT14B Wheel Loader, Dump Trucks, Implement Trailer, J.D. Utility Loader Tractor, 3 Pt. Equip, Large Amount Of Shop Support Related Equipment.

For More Sale Info. Or Inspection: Call Darrin @ 989.826.5222

Located: 134 Mount Tom Rd. (M-33), Mio

Precision Excavating Inc., Owner

To View A Complete Detailed Listing With Photos Visit [johnpeckauctions.com](http://johnpeckauctions.com)

\*\*\*\*\*

Bellinger “Live” Farm Estate Auction

Saturday, November 13 @ 10:00 A.M.

This Estate Sale Features: Massey Ferguson 1533 Diesel 4x4 Loader Tractor With Only 297 One Owner Hours, Good Clean Hay Equipment, I.H. Cub Tractor, Large Amount Of Shop Related Tools, Quan. Of Rough Sawn Lumber, Antiques, Collectibles & Many Items Around The Farm.

Located: 1626 Dassay Rd., Gladwin

The Ron (Joe) & Caroline Bellinger Estate

To View A Complete Detailed Listing With Photos Visit [johnpeckauctions.com](http://johnpeckauctions.com)

\*\*\*\*\*

Excellent Fall Firearms & Sporting Related Online Auction

Bidding Is Open & Closes Tuesday, November 16

This Sale Features: Many New, Used & Collector Firearms To Include; Colt, Winchester, Smith & Wesson, Glock, Remington, Browning, Military Firearms, Ammo. & More! ALL FFL RULES APPLY. Background Checks Performed On Site Free Of Charge. **Note:** You Don't Want To Miss This Auction, The Hand Selected Quality We Have Presented Will Not Disappoint You. We Are Always Looking For Quality Firearms.

If You Are Interested In Selling Some Or Part Of A Collection, Please Contact John Directly @ 989.345.4866.

Located: 27 E. M-61, Gladwin

To View A Complete Detailed Listing With Photos Visit [johnpeckauctions.com](http://johnpeckauctions.com)

\*\*\*\*\*

Mikado Online Divorce Settlement Auction

Bidding Is Open & Closes Saturday, November 20

This Sale Features: Tractors, Hay Equipment, Many Other Pcs. Of Small Farm Equip., 65 Ford Falcon Futura, Livestock Related Items.

Located: 1776 E. Michaud Rd., Mikado

Warren & Sylvia Everett, Owners

To View A Complete Detailed Listing With Photos Visit [johnpeckauctions.com](http://johnpeckauctions.com)

\*\*\*\*\*

For Questions Regarding Any Of Our Upcoming

Live & Online Auctions, Please Contact Us At: 989.426.8061

OR 989.345.4866. [johnpeckauctions.com](http://johnpeckauctions.com)

BELLINGER “LIVE” FARM

ESTATE AUCTION

SATURDAY, NOVEMBER 13, 2021 • 10:00 AM

LOCATION: 1626 DASSAY RD.

DIRECTIONS: 2 Miles North Of Gladwin On M-18 To Ridge Rd., Then East 1 ½ Mile. OR 3 Miles East Of Gladwin On M-61 To Hockaday Rd., Then North 2 ¼ Mile To Ridge Rd., Then West 1 ½ Mile. (Sale Is Located On The Corner Of Dassay & Ridge Rd.).

GLADWIN, MICHIGAN 48624 zone 3

Due To The Passing Of Ron (Joe) & Caroline Bellinger, The Following Will Sell At Live Public Auction On The Bellinger Farm.

**FARM EQUIPMENT, SHOP TOOLS & MISC. ITEMS:** Massey Ferguson 1533 Diesel Tractor, 4x4, 33 H.P., Sync Shuttle W/ M.F. 1525 Loader, Only 297 One Owner Hours • Hesston Model 1120 Haybine, 9' Cut, Good Cond. • Pequea Model TR-8 Turbo 8 Wheel Hay Rake, Like New • New Idea Model 323 Pull Type 1 Row Corn Picker W/ 6 Roll Husking Bed, Stored Inside, Good Cond. • Massey Ferguson 15 Hole Grain Drill • McCormick Farmall Cub Tractor, W.F. • Kuker 300 Gallon Trailer Mtd. Field Sprayer W/ 16' Boom • Cardinal Junior Aluminum 20' Transport Corn Elevator W/ Motor • 3 Pt. Boom • King Kutter 3 Pt. 6' Disc • King Kutter 3 Pt. H.D. 7' Back Blade • Curtis 7' Front Mtd. Hitch-N-Run Snow Plow • Bale Spear • 8' X 16' Flat Rack Farm Wagon On Running Gear • 8' X 14' Flat Rack Farm Wagon On Running Gear, Needs Work • (All Above Farm Equip. Has Been Housed) • **SHOP RELATED TOOLS TO INCLUDE:** Jet Gold Series Dust Collector System • Craftsman 10" Floor Model Radial Arm Saw W/ Table Extension • Craftsman Floor Model 10" Table Saw • Craftsman 2 H.P. Floor Model 6 1/8" Jointer/Planer • Craftsman 2 H.P. 12 1/2" Wood Planer Mtd. On A Cabinet • 16 Speed Floor Model Drill Press • Floor Model Band Saw • 12" 8 Speed Wood Lathe • Mortising Machine Mtd. On A Cabinet • RBI Floor Model Scroll Saw • Oscillating Spindle Sander • Ryobi Plunge Router • 1" Sander • Craftsman Bench Type Drill Press • Large H.D. Vise • Craftsman Router Mtd. On A Cabinet • Several Bar & Quick Grip Clamps • Wood Carpenter Clamps • Lathe Tools • Roller Stands • 3 1/2 H.P. 6 Gallon Air Compressor • Shop Vac • Swivel Drill Press Vise • Several Hand & Power Tools • **Large Quan. Of Rough Sawn Lumber, Radom Widths & Lengths (Stored Inside)** • Lots Of Craft Wood • **LAWN TRACTORS & MISC. FARM RELATED ITEMS TO INCLUDE:** J.D. 112 Riding Lawn Tractor W/ 42" Mower Deck & Rear Tire Wgts. • Simplicity 16 H.P. Riding Lawn Tractor W/ 42" Mower Deck, Runs, But Needs Work • Pull Type 1 Bottom Garden Tractor Plow • Pull Type Garden Tractor Cultivator • North Star 80 Gallon Pull Type 12V Yard Sprayer • I.H. Quick Hitch • 3 Pt. Hitch W/ Hyd. • Other 3 Pt. Hitches • Hyd. Hoses & Cylinders • Tractor Canopy • Walk Behind Lawn Roller • Pittsburgh 1 Ton Cherry Picker • Aluminum Extension Ladder • Hoyt “Striker” R.H. Compound Bow W/ Case • Deer Stands • Old Motors • Misc. Wire • Misc. Maple Syrup Equip. • **ANTIQUES & COLLECTIBLES TO INCLUDE:** Apple Press • Wooden Barrel • Runner Sleds • Set Of Log Tongs • 2 Door Wooden Cabinet • Old Saws • Kerosene Heater • (5) Crocks • Misc. Household Related Items • Barns Full Of Misc. Items • Much More • **This Is A Partial Listing!**

**AUCTIONEER NOTE:** Plan To Attend This Good Live Estate Auction, In A Nice Country Setting. Your Attendance At The Bellinger Farm Estate Auction Is Appreciated.

**TERMS OF SALE:** Cash, Check Or Credit Cards Are Accepted. No Buyer Premiums. Lunch On Grounds.

TO VIEW A COMPLETE LISTING WITH PHOTOS VISIT

JOHNPECKAUCTIONS.COM

THE RON (JOE) & CAROLINE

BELLINGER ESTATE

1626 Dassay Rd., Gladwin, MI 48624

JOHN PECK AUCTIONS LLC

Gladwin, MI (989) 426-8061



Mr. Peanut

FROM PAGE 1

By the 1930s, Mr. Peanut generically symbolized the entire peanut industry. Since his creation, he has appeared on almost all of Planters’ packaging and advertisements, and he has been one of

**Below:** Mr. Peanut cast iron bank that is valued at \$50.



the best-known manufacturing mascots for the past 100 years. Mr. Peanut is so popular that in 2006 when Planters held an online contest to determine if a bow tie, cufflinks, and pocket watch should be added to his attire, the nut-eating public voted for no changes. They loved Mr. Peanut just as he is.

Planters ride on Mr. Peanut’s proverbial coattails (he doesn’t actually have coattails) has not always been a smooth ride. In January 2020, Planters killed off Mr. Peanut, for a Super Bowl commercial, showing Mr. Peanut drive his Nutmobile off a cliff to avoid an armadillo. Kool-Aid Man attended Mr. Peanut’s funeral, and Kool-Aid Man’s tears combined with sunlight caused a new, younger incarnation of Mr. Peanut (apply called “Baby Nut”) to grow from the soil. Another advertising campaign,

launched in August 2020, showed Baby Nut had grown into “Peanut Jr.,” a 21-year-old young adult nut. The world’s nut buying populace went nuts, encouraging other nut eaters to block Peanut Jr. from rising to fame. In February 2021, Planters announced the Baby Nut/Peanut Jr. advertising campaign a nutty failure, and new commercials, advertisement, and packaging for Planters reintroduced the original Mr. Peanut as their now and forever mascot.

Representing Planters Peanuts for so many years has led to a peanut jar full of collectible Mr. Peanut items, ranging from dolls, posters, packaging items, Worlds Fair items, puppets, banks, cars, clocks, advertising and promotional items, and so much more. Companies such as Limoges in France have offered hand-painted Mr. Peanut boxes. Many collectors search for a mint conditioned Mr. Peanut rubber hand puppet, circa 1950, that, today, costs around \$1,200 and is considered by some collectors to be the Holy Grail of Mr. Peanut collectibles.

Planter’s new advertising campaign is called “A Nut Above,” and after 100 years of living legumelously, Mr. Peanut has proven himself to truly be a nut above all other nuts, which is why collectors quite literally go “nuts” for Mr. Peanut collectibles.

Collectors should beware: there are quite a few fakes and reproduction Mr. Peanut items around, and no one wants to collect a rotten peanut.

Plastic Mr. Peanut car with driver that was offered on eBay for \$400.



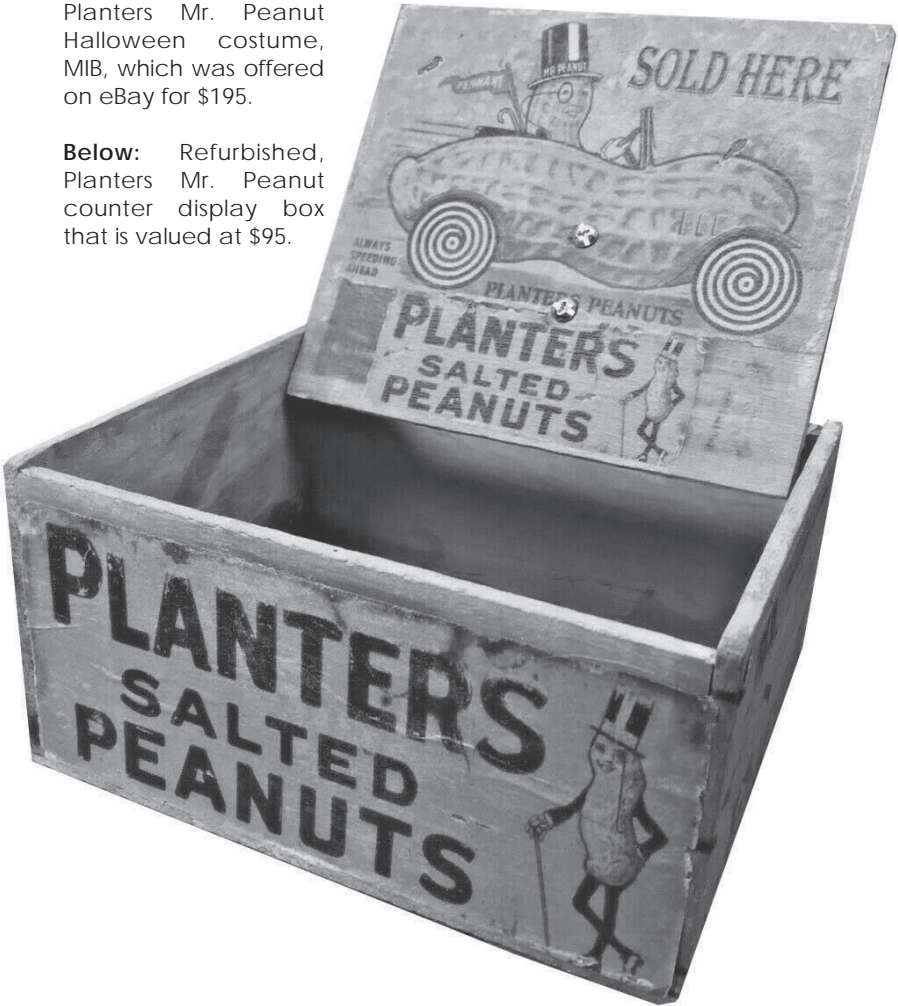
**Right:** Mr. Peanut wooden pinback button given away as a promotion at the 1939-’40 Worlds Fair in New York. The pin is valued at \$25.

**Below:** Vintage, 1950s, plastic Mr. Peanut wind-up, walking, display figure that is valued at \$500.



**Above:** Vintage, 1974 Planters Mr. Peanut Halloween costume, MIB, which was offered on eBay for \$195.

**Below:** Refurbished, Planters Mr. Peanut counter display box that is valued at \$95.



Wind-up Mr. Peanut alarm clock, circa 1960s, that is valued at \$180.





ORDER FORM

SUBSCRIPTIONS

SAMPLE

THE AUCTION EXCHANGE

And COLLECTORS NEWS

PO Box 90, Knightstown, IN 46148-0090

Phone Toll Free (888) 339-3795, x134 • Fax (877) 223-3778

info@eauctionexchange.com

NAA

Auctioneer

ILLINOIS

AUCTIONEERS

IAA

INDIANA AUCTIONEERS ASSOCIATION

OAA

OHIO AUCTIONEERS ASSOCIATION

MAA

MICHIGAN AUCTIONEERS ASSOCIATION

☐ Free Sample Copy of *The Auction Exchange & Collectors News*

SUBSCRIPTIONS:

☐ New Subscription

☐ Renewal

☐ \$32<sup>00</sup> for 1 year (51 issues)

☐ \$57<sup>00</sup> for 2 years (102 issues)

☐ \$82<sup>00</sup> for 3 years (153 issues)

☐ \$151<sup>00</sup> for Canadian or \$130<sup>00</sup> 1st Class in U.S., 1 year

Total enclosed: \$.....

Name.....

Address.....

City.....State.....Zip.....

Phone (.....).....Email.....

This is a gift, please send a postcard announcing the gift subscription

From.....

I read *The Auction Exchange* for:

☐ Auction reviews

☐ Articles

☐ Advertising

☐ Other.....

Mail this completed form with payment to: PO Box 90, Knightstown, IN 46148-0090

CREDIT CARD ORDERS: 888-339-3795

Tony Gregory..... Publisher

Lorri Egan.....Publication Mgr./Advertising

Connie Swaim.....Managing Editor

Carol Johnson..... Pre-press Manager

Auction Exchange and Collectors News  
Published weekly except one week in December  
(51 issues) and mailed every Thursday  
ISSN: 0279-0950  
Published by MidCountry Media, Inc.  
27 N. Jefferson St., PO Box 90  
Knightstown, IN 46148  
Periodicals postage paid at Knightstown, Indiana

Subscription price: \$32.00 for one year  
\$57.00 for two years; \$82.00 for three years

Canadian subscriptions are:  
\$151.00 per year First Class (US funds)

**POSTMASTER:**  
Send address changes to:  
The Auction Exchange and Collectors News  
PO Box 90  
Knightstown, IN 46148-0090

**SUBSCRIBERS:**  
We print the advertisements as sent to us by  
the auctioneer. It is not possible to check the  
correctness of the listed items, *so before  
traveling a long distance for a particular item,  
contact the auctioneer first by phone.*

Reproduction in any form is prohibited without  
the written consent of the publishers.  
**ALL RIGHTS RESERVED.**

CONTRIBUTING WRITERS:

Haley Filhart	Nancy Kelly
Julia Henri	Larry LeMasters
Jack Kelly	Karin Milliman

GENERAL ADVERTISING INFORMATION

DEADLINE IS WEDNESDAY AT 12 NOON

Unless otherwise noted

ADVERTISING SIZES AND RATES

1/8 page (5"Wx4"H) - \$83.80

1/2 page (10¼"Wx8"H) - \$315.56

1/4 page (5"Wx8"H) - \$157.77

Full page (10¼"Wx16"H) - \$546.15

Call for additional sizes and rates 888-339-3795

Open Rate

Our open rate is calculated at \$7.33 per column inch. Call for more information about our Low Cost Standard Open Rate (\$6.98/col.") which is based on a minimum of 10 point type in the body copy.

Display Advertising

Each page is six columns wide (10-1/4 inches) by 15-1/2 inches high. Each column is 1-5/8 inches wide. We use a minimum of 10 pt. type (for body copy) for purposes of readability, and specific point sizes for heading (24 pt.), date (18 pt.), city/state (16 pt.) so please keep this in mind as you plan your ad. We typeset your ad to fit our specifications while keeping in mind your requirements and the need to minimize the cost of your ad.

Back Cover Ads:

(Non-auction ads only.) Back cover ads are booked in advance by reservation - call for availability.

Deadlines/Sending Copy:

Our deadline is 12 noon on the Wednesday before the issue date, (Monday). All material must be received by this time, including photographs. (Call for holiday schedules.) A 10% surcharge will be added to display advertising received Wednesday between 12 Noon and 3:00 p.m. We cannot always guarantee insertion of late ads. In all cases, it's a good idea to call and notify us that an ad is being sent, and to confirm that your ad has been received.

Mail Your Copy:

27 N. Jefferson St., Knightstown, IN 46148. First class mail may or may not be delivered by deadline if you mail on Monday or later. If you mail on Tuesday, send by U.S. Express Mail, UPS Next Day or other "next day" services.

Fax Your Copy:

You may fax your ad to us at: 877-223-3778.

E-Mail:

Please send "Text Only" format, we cannot use files that have been saved in their native software. Email address: info@eauctionexchange.com

Photos:

should be sent in JPG format, as attachments to E-mail. We accept color, or black and white.

Accuracy:

Every effort is made to ensure the accuracy of your finished ad. Sending it to us well in advance is essential in allowing adequate time for proofing and faxing layouts to you for approval. We assume no guarantee or liability concerning the accuracy of published advertisements.

ISSUE DATE

DEADLINE (NOON)

NOVEMBER 16... WED., NOV. 10

NOVEMBER 23... WED., NOV. 17

NOVEMBER 30... TUES., NOV. 23

DECEMBER 7... WED., DEC. 1

DECEMBER 14... WED., DEC. 8

DECEMBER 21... WED., DEC. 15

DECEMBER 28... WED., DEC. 22

JANUARY 4... NO PAPER

THE AUCTION EXCHANGE

And COLLECTORS NEWS

ZONE MAP

This zone map is a feature of *The Auction Exchange & Collectors News* and is designed to make it easier for you to locate events throughout the region.

You will find the Zone symbol following the city and state in the heading of each ad.

This symbol will correspond to the zone map shown here.

POSTAL REPORT

Without fail for 42 years, The Auction Exchange & Collectors News has been delivered to the USPS by 5 pm every Friday.

Currently we are delivering the newspaper to the USPS by midnight Thursday. Despite this early entry into the postal stream and our vociferous lobbying at all levels of the USPS, we are experiencing delivery problems in the following areas:

Birch Run MI, Saline MI

If you don't receive a paper by Tuesday's mail, you may call us to have a paper sent first class.

If it is after normal business hours, please call 800-876-5133 ext. 135.

Please also call your Post Office to report your late delivery.



# UPCOMING AUCTION CALENDAR

JANUARYFEBRUARYMARCHAPRILMAYJUNEJULYAUGUSTSEPTEMBEROCTOBERNOVEMBERDECEMBER

**The Upcoming Auction Calendar** is a listing of future Auctions beyond the current week.

**Auctioneers:** This service is provided at no charge. As with everything - we do our utmost to make sure that your Auction is listed in a timely and accurate fashion.

**For our Readership:** For more thorough listings contact the Auctioneer personally and tell them where you saw their ad!

## ZONE 4

Sat., Nov. 20, Belcher Auction Co., Landscaping, Kalamazoo, MI

Mon., Nov. 22, Aaron Warner Foxview, Miscellaneous, Nashville, MI

Fri., Nov. 26, Dales Auctioneering Service LLC, Antq., Collect., Holland, MI

Mon., Nov. 29, Aaron Warner Foxview, Miscellaneous, Nashville, MI

Sat., Dec. 4, Miedema Auctioneering, Farm Equipment, Hudsonville, MI

Mon., Dec. 6, Aaron Warner Foxview, Miscellaneous, Nashville, MI

Mon., Dec. 13, Aaron Warner Foxview, Miscellaneous, Nashville, MI

Mon., Dec. 20, Aaron Warner Foxview, Miscellaneous, Nashville, MI

Mon., Dec. 27, Aaron Warner Foxview, Miscellaneous, Nashville, MI

## ZONE 5

Sat., Nov. 20, Americana Auctions, Tiffany, Fine Art, Grand Ledge, MI

## ZONE 8

Sat., Nov. 20, Strawser/Real Estate Sails, Inc., Coin, Postcard, Wolcottville, IN

## ZONE 12

Sat., Nov. 20, Whalen Realty & Auction, Motorcycle, Misc., Neapolis, OH

Since 1978 the Weekly Auction & Collectors Guide for Michigan, N. Indiana and N.W. Ohio

## LIST YOUR UPCOMING AUCTIONS FREE!

Day	Date	Auction Company	Type of Auction	Town	State

Mail to: The Auction Exchange & Collectors News  
PO Box 90, Knightstown, IN 46148-0090

# Majestic tureens welcomed soup to the table

BY BARBARA MILLER BEEM

Love it or hate it (or perhaps something in between), it can be made from scratch or heated from a can. A good way to use leftovers, it's often valued for its nutritive and restorative powers, or slurped down as a quick and inexpensive meal. Soup's on!

But there was a time when the consumption of soup at a grand feast was akin to the opening act of a play, the first course of an elaborate meal. Special serving pieces were made to honor this first course. Called tureens, those servers can still be a dramatic addition to any table.

"Of soup and love, the first is the best." So states an 18th-century English proverb, as reported by Donald L. Fennimore and Patricia A. Halfpenny in "Campbell Collection of Soup Tureens of Winterthur," a book written to accompany the world-class exhibition of tureens at the Winterthur Museum.

Tracing the history of soup, Fennimore and Halfpenny noted that the earliest ones were modest at best, a simple meal cooked over an open fire in a single pot. It didn't stop there.

What followed were "splendid public feasts," displaying the power of medieval monarchs

**Above:** Mercury gilded, this tureen, probably made in France between 1720 and 1740, features scrolled legs with human busts, two male and two female. The identity of the craftsman remains a mystery; one clue is the marking of the letter "H," thought to identify the brass founder (perhaps Arnould Heron?).

and noblemen. But in the 1600s, these formal dinners became "a less public affair" as they were displaced by more private, but no less formalized, meals. Gathering in a parlor, guests would then enter the dining room and behold the table before them. By 1700, multi-course meals, a tradition adopted from France, were popular.

Whereas a first-course soup might be a clear broth to whet the appetite, the vessel presenting it was anything but simple. Generally oval-shaped, these deep dishes reflected the highest style of their time. Made of metals, including silver, silver

gilt, pewter, and plated base metals, or ceramics, including earthenware, stoneware, and fine porcelain, tureens might well be stand-alone pieces or part of a set, but not necessarily matching other pieces of the dinner service, according to Ann Wagner, curator of decorative arts at Winterthur. Tureens, she said, were "all about showing off. What was inside was not the important part." Unfortunately, she added, "we don't have the story" of when or where tureens made their first grand appearance at the table.

Some generalizations can be made about tureens, however. Usually

footed, tureens are lidded (to retain heat) and often topped with a decorative finial. Many tureens, particularly those made of ceramics, include liners "but you don't see that part," Wagner pointed out. Liners might be filled in the kitchen and then transported to the table (tureens were heavy, and the less handling of them, the better), or the soup might be poured directly into the tureen at the table. To protect the surface of the dining table and the linens covering it, an undertray (not necessarily matching, but complimentary in design) serves double

See Tureens page 8

**Above:** Their universality makes tureens appealing. Made in China (1775 to 1785), this example bears a coat of arms that has been traced to the Sobral family of Portugal, with a Latin motto that translates to "Ours is the Name and Honor."

**Above:** Molded in the shape of a cabbage, this tureen was made in Belgium and is topped by a startled, red-mouthed frog. A whimsical piece, it is made of tin-glazed earthenware (faience).





The Weekly Auction Calendar is provided as a service for our Advertisers and Readers. We make every effort to ensure accuracy of the calendar but always refer to the complete Ad to verify the Calendar information. Unless specified by the Auctioneer in writing we reserve the right to designate the 'Type' of Auction listing.  
Ⓢ INDICATES THE AD APPEARS IN SECTION 2 OF THE PAPER

DATE	TIME	AUCTIONEER/SRV.CITY	TYPE	PAGE/SEC.
<b>ZONE 3 MICHIGAN</b>				
Sat., Nov. 13	10am	John Peck Auctions	Gladwin, MI Farm Estate	3
Sat., Nov. 13	9:30am	Wegner Auctioneers	Pinconning, MI Estate	8
<b>ZONE 4 MICHIGAN</b>				
Wed., Nov. 10	10am	Stantons Auctioneers	Kalamazoo, MI Estate	10
Thu., Nov. 11	10am	Art Smith Auctions	Howard City, MI Estate	8
Thu., Nov. 11	4pm	Dales Auctioneering	Holland, MI HH, Tool, Coll.	7
Sat., Nov. 13	10am	Art Smith Auctions	Coopersville, MI Tractor, Equipment	3
Sat., Nov. 13	10am	Belcher Auction Co.	Battle Creek, MI Estate	15
Sat., Nov. 13	11am	Kendall Tobias Auction	Hastings, MI Coll., HH, Misc.	8
Sat., Nov. 13	9:30am	Stantons Auctioneers	Hastings, MI Estate	11
Sat., Nov. 20	10am	Belcher Auction Co.	Kalamazoo, MI Landscaping	15
<b>ZONE 5 MICHIGAN</b>				
Thu., Nov. 11	10am	Braun & Helmer Auct.	Tipton, MI Gun, Ammo, Misc.	9
Thu., Nov. 11	3pm	Merritt Auction Svc.	Elsie, MI RE, PP, Misc.	15
Sat., Nov. 13	10am	Mel White Auctioneer	Jackson, MI Collectibles, Misc.	13
Sat., Nov. 13	10am	Yutzy's Auction Svc.	Leslie, MI HH, Tool, Gun	15
Sun., Nov. 14	Noon	Burns Auction Co.	Colon, MI RE, HH, Misc.	14
<b>ZONE 7 INDIANA</b>				
Sat., Nov. 13	10am	Auctions by Moldenhauer	La Porte, IN Antq., Coll., Toy	8

CATEGORIES		• Computer	• Firearm	• Industrial	• Office Equip.	• Sports
• Antique	• Business/Commercial	• Consignment	• Food	• Jewelry	• Personal Prop.	• Tag Sale
• Clock	• Coin	• Doll	• Furniture	• Lamp	• Pottery	• Tool
• Collectible		• Equipment	• Glass	• Livestock	• Primitive	• Toy
		• Estate	• Government	• Musical	• Quilt	• Vehicles
		• Farm	• Household	• New Merchandise	• Real Estate	
DATE	TIME	AUCTIONEER/SRV. CITY		TYPE	PAGE/SEC.	
ZONE 8 INDIANA						
Wed., Nov. 10	9am	Trading Place	Shipshewana, IN	Antq., Misc.	14	
Sat., Nov. 20	10am	Strawser/RE Sails, Inc.	Wolcottville, IN	Coin, Postcard	8	
ZONE 9 INDIANA						
Fri., Nov. 19	10am	Route 32 Auctions	Crawfordsville, IN	Gas & Oil	2	
ZONE 12 OHIO						
Sat., Nov. 13	9:30am	RES Auction Services	Litchfield, OH	Farm Equip., Tractor	13	
Sat., Nov. 20	10am	Whalen Realty & Auct.	Neapolis, OH	Motorcycle, Misc.	9	
ZONE WEB						
•	•	Albrecht	Online	Farm, Constr., Misc.	3	
•	•	Schrader	Online	Miscellaneous	14	
•	•	Wegner	Online	Estate	7	
Sat., Nov. 13	•	Chuck Cryderman	Online	Equipment	13	
Sat., Nov. 13	•	Chuck Cryderman	Online	Estate	13	
Fri., Dec. 3	9am	Pook & Pook	Online	Antq. Toy, Board Games	12	
ZONE CALENDAR						
Every Wed.	5pm	Trading Place	Shipshewana, IN	Miscellaneous	20	
•	•	John Peck	•	Miscellaneous	3	

Need to Contact Us?

Call: 1.888.339.3795 ext. 134

E-mail: info@eauctionexchange.com

Tureens

FROM PAGE 6

duty by grounding the bowl and, at the same time, adding “a colorful presence.” As for scooping the soup from a tureen to an individual bowl, ladles (“oodles of ladles”) abound. There could be more than one tureen present at the table at one time, Wagner added, perhaps a matching set. But because tureens were intended for use as centerpieces, they do not necessarily relate to (or match with) other pieces of dinnerware at the table.

The “golden age” of tureens, Wagner said, began in the late 18th century, during an era of “riches and opulence.” The “result of sculptural genius,” elaborate decorative



features might well include representations of crustaceans, watercress, or peeled lemons, or perhaps even mythological figures. Buds and beasts, figurines and flowers: Tureens at their peak were an artistic visual feast, the “composite effort of

See Tureens page 10

Right: This regal swan tureen is one of many extraordinary tureens on permanent display at Winterthur. Made of the finest white hard-paste porcelain at the Meissen factory in the 1770s, it has an animated quality about it that must have stunned guests partaking of its contents. Often imitated, it was never equaled.

Left: The 1775 catalogue description of this tureen by the Chelsea Pottery Factory says it best: “a most beautiful tureen in the shape of a HEN AND CHICKENS, big as life, in a curious dish adorn’d with sun flowers.” So popular was this pattern that Staffordshire earthenware potters copied it.



BOB & MARY JANE TURNER

ON-LINE ESTATE AUCTION

Nov. 6 - 13, 2021

Hemlock, MI

(Register & bid at HiBid.com)

An extraordinary estate with pristine antique furniture, beautiful glassware and pottery, advertising pieces (several local) and unique floral arrangements. There are also household, flower shop & garage items.

Bidding starts Nov. 6 through Nov. 13th.

For questions contact Laura @ (989)245-9258.

WEGNER AUCTIONEERS

(989) 793-8689

wegnerauctioneers.com

PUBLIC AUCTION

THURSDAY, NOVEMBER 11, 4:00 PM

LOCATION: 5075 RUSSCHER ROAD.

HOLLAND, MI 49423

SHORT NOTICE AUCTION LISTING...

THE FOLLOWING IS BRIEF LISTING OF THE UP COMING AUCTION. MANY OF THE ITEMS WERE PRE-PACKED SO A LISTING COULD NOT BE MADE. (THERE WILL BE HOUSEHOLD, TOOLS, COLLECTIBLES—FUN FINDS).

FULL LISTING AND PICTURES WILL BE POSTED AS SOON AS POSSIBLE. CHECK BACK TO WEB SITE FOR THE UPDATES.....

Small dinette table w/4 chairs; drop leaf table; trunks; Sligh Grandfather clock; steel wheels; Wagner paint sprayer; Coleman generator; walking sticks; Delta floor drill press; squirrel cages; Remington 60 bullet heater; bench grinder; electric motors; miter saw; small Craftsman jointer/planner; Troybilt leaf blower; blue ball canning jars; various lamps; Brassai lighted artwork picture; indoor/outdoor rugs; kitchen ware; collection of vintage camper items—pictures, ornaments, models; silverware; scotty dog collection items; small kitchen appliances; -- PLUS MUCH MORE.....

DALE'S AUCTIONEERING SERVICE, LLC

Dale Flokstra, Auctioneer

(616) 836-3132

www.dalesauctioneering.com



## TOBIAS COMING AUCTIONS

### ★ ESTATE AUCTION-NICE! ★ SATURDAY, NOVEMBER 13, 11:00 AM (PLEASE NOTE TIME)

LOCATION: A+ 1100 COATS GROVE RD.

DIRECTIONS: From Hastings, take N. Broadway (M-43) north approx. 2 miles to Coats Grove Rd., turn right (east) &amp; go approx. 1.2 miles to sale. Follow signs. Parking south side of road.

HASTINGS, MICHIGAN zone 4

**SPECIAL ITEMS OF INTEREST:** EZGO 4 wheel drive cart - **Must See!** 12' aluminum fishing boat & trailer - nice! **SHOP ITEMS:** Radial arm saw; Lincoln welder; Craftsman wood turner; Craftsman copy crafter; Craftsman band saw/sander; Craftsman router table; belt/disc sander; Skil band saw; DeWALT 12 1/2" heavy-duty planer; Craftsman scroll saw; drill press; many woodworking tools; hand tools; power tools; router; reciprocating saw; electrical supplies; propane heater; **Much More!** **SPORTS ITEMS:** Reloader equipment/supplies; nice deer mountss; fishing rods; ice fishing poles; 6' truck topper; trolling motors; fly tying supplies; sleeping bags; gun cabinet; animal pelt; **More!!** **ANTIQUES & COLLECTIBLES:** Glassware incl. Depression; #4 crocks; air hockey game; Lincoln Logs; Carrom board; stamp collecting items; Match Box cars; toys; Super Bowl game; globe; squeeze strainer; metal cabinet; Simplicity metal tin; Match Box car case; & **More!!!** **HOUSEHOLD:** Couch; coffee table; Kenmore sewing machine; Rival Roaster; bar stools; Singer Simple Sewing machine; upholstered chair; many books; games; luggage; patio table & chairs; lawn chairs; baskets; nice full size pool table & cue sticks; & **Much More!!!** **This is a very nice auction to attend!!! Something for everyone! Expect surprises as this is just a partial listing!!!** Estate of George Degroot; Linda Degroot.

Personal Representative.

For more go to [www.auctionzip.com](http://www.auctionzip.com) #23371
**KENDALL TOBIAS, AUCTIONEER**  
Hastings, Michigan • (269) 945-5016

## LIVE ON-SITE PUBLIC ESTATE AUCTION THURS., NOV. 11th @ 10 AM

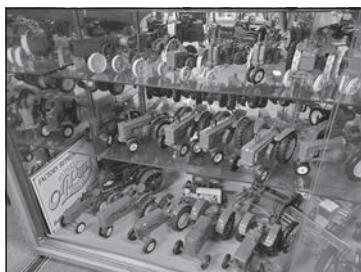
INSPECTION: Weds., Nov. 10th, 4 PM-5 PM

LOCATION: 18490 Church Rd. Howard City, MI 49329 (Moncalm Co.)

DIRECTIONS: Take US-131 N. of Grand Rapids 30 miles or South of Big Rapids 21 mi. to the Howard City/M-82 exit #118, East 2 mi. to Federal/Old 131, S. 1 block to Walnut St., East to Poplar St., S. to Cherry St. then follow the curve East onto Church Rd and continue 1/4 mile.

HOWARD CITY, MI 49329 (MONCALM CO.)

Auction held help settle the Estate of the late Don & Millie Zenk, overview includes: **TRACTORS:** 1939 Ford 9N, 3 pt., Sherman trans, one of the 1st 100 9Ns made, said to be been in the Ford Museum no documentation; 1963 Ford 4000, 3 pt., power steering, SELECT-O-SPEED; 1946 Farmall A Cultivator; Original Ford 9N steel wheels. **FARM TOY COLLECTION:** 100's of Tractors, Trucks & Equipment of every size. **AUTO:** 2007 Ford Taurus SLE 4-door, 70K miles. **GUNS & SPORTING ITEMS:** 25+ Rifles & shotguns, Few traps. **PLUS:** Oak Furniture; Farm Primitives; Collectible glassware; Coin Collection; Shop tools; House full of Furniture & Household Items & much more!



zone 4


 Visit [www.artsmithauctioneers.com](http://www.artsmithauctioneers.com)  
or call Noah 616-633-4254

## MAZUR ESTATE - LIVE AUCTION SATURDAY, NOV. 13TH @ 9:30 AM

LOCATION: 1792 W. LAPAN ROAD.

DIRECTIONS: From Pinconning at Garfield Road go west 1-mile to 11-mile Road, north 2-miles on 11-mile to Mt. Forest Road, west 1-mile to Main then north 1 1/4-miles to sale.

PINCONNING, MI zone 3

Complete household "As New" Amish built home furnishings, modern appliances, &amp; general household items.

**AUCTION HIGHLIGHTS:** Flawless Shipshewana built 7-piece oak queen bedroom set \* Premium 7' & 6' china/curio cabinets \* Wanna 60" S-curve deluxe rolltop desk w/glass riser cabinet \* Upright freezer, ref/freezer & washer \* Kitchen Aid Pro stand mixer set \* Flexsteel sofa sleeper, rocker, recliner, etc. \* Gardall TL30 floor safe \* Amish oval oak dinette & dining room sets \* Sligh 7' triple chime grandfather clock \* Fine china & Pfaltzgraff dinnerware \* T-Fal & Farberware cookware \* Cuisinart food prep equipment \* Sony & Toshiba flat panel T.V.'s to 40" \* Pyrex & Corningware bakeware \* Quantity canning & cooking items \* Several S.S. metro shelving units inc. roller \* Burtram mink, Persian lamb & faux rabbit women's coats

**AUCTIONEER'S NOTE:** This is an excellent opportunity to purchase absolutely as new home furnishings. Join us for a deer widow weekend - live auction held in heated garage & home. Pickup & inspection arrangements by appointment w/auctioneer.

**WEGNER AUCTIONEERS**  
(989) 793-8689  
[wegnerauctioneers.com](http://wegnerauctioneers.com)


## FANTASTIC LIVE IN-PERSON AUCTION

PROUDLY PRESENTED BY

AUCTIONS BY MOLDENHAUER, LLC

SAT., NOVEMBER 13TH, 2021 AT 10 AM CST

LOCATION: 1209 PIONEER ROAD

LAPORTE, INDIANA zone 7

ANTIQUES, COLLECTIBLES, TOYS, COCA COLA ITEMS, SHIRLEY TEMPLE DOLLS, BARBIE DOLLS, GERMAN NUTCRACKERS DISNEY ANIMATION ARTWORK, SOUTH SHORE NOTRE DAME POSTER, RAILROAD LANTERNS, RAILROAD ITEMS, FURNITURE OF ALL KINDS, BOOKS, AUTOMOBILE PAMPHLETS, VINTAGE CHRISTMAS ITEMS, BLOW MOLDS, MILITARY AND POLITICAL ITEMS, VINATGE FANS, STUDEBAKER AUTOMOBILE ITEMS, QUILTS, LINENS, VINTAGE SHAWLS, VINTAGE PHONES, AND FANS, DISNEY AND ELVIS ITEMS OF ALL KINDS, WILTON CAKE PANS, PAPMPERED CHEF ITEMS, OLD BOTTLES, STAMPS, LOCAL BOTTLES, OLD STONEWARE BOTTLES, LARGE AMOUNT OF TIFFIN GLASS, OHIO ART TOYS, ROLLING PINS, PRIMITIVES, VINTAGE KITCHENWARE, TOOLS BOTH OLD AND NEW, LAMPS AND LIGHTING, ELECTRONICS AND EARLY CALCULATORS, WEDGEWOOD, GUITARS, TIMEX STORE DISPLAY PIECE, LIFE AND LOOK MAGAZINES, ARTWORK OF ALL KINDS - PRINTS, ETCHINGS, LITHOS, AND MORE, VINTAGE FRAMES, SILVERWARE, A LARGE AMOUNT OF MISC. SMALLS, SILVERPLATE, CAMERAS, BALL JARS AND CANNING SUPPLIES AND MUCH MUCH MORE.

----- LIVE IN PERSON AUCTION - NO BUYERS PREMIUM-----

GO TO [WWW.AUCTIONZIP.COM](http://WWW.AUCTIONZIP.COM) ID # 5239 TO SEE PICTURES

AUCTIONS BY

Mike Moldenhauer

IN Lic. #AU10400109

MOLDENHAUER, LLC

"Making Auctions Fun Again"

(219) 874-2718 (Home)

or

(219) 229-0411 (Cell)

## COIN & POSTCARD AUCTION

SATURDAY, NOV. 20, 10:00 AM

PREVIEW STARTING AT 7:30AM

LOCATION: 106 E. DUTCH STREET.

WOLCOTTVILLE, INDIANA zone 8

ONLINE BIDDING AVAILABLE: Go to [www.strawserauctions.com](http://www.strawserauctions.com) then go to "Online Auction" and click "Hi-Bid". Bid online or in person.

**GOLD:** 30+ pieces - \$20 Liberty & St. Gaudens, \$10 Liberty and Indiana, \$5 Liberty, gold eagles \$50, \$25, \$10 & \$5, 1916 McKinley \$1 and foreign gold; **750+ MORGANS:** 78-CC, 79-CC, 80-CC, 81-CC, 82-CC, 83-CC, 84-CC, 85-CC, 89-CC, 90-CC, 92-CC, 93, 93-O, 93-CC, 94, 95-O 95-S Peace dollars (1921 & 28); half cents; large cents; Indian head cents; silver eagles; coin albums with coins; bulk coin lots; 250+ proof and mint sets; slabbed coins; silver rounds; commemoratives; foreign coins; 1,000's Lincoln wheat cents; Winchester gun safe; large Mosler safe; currency and other coins.

**TERMS:** Cash, Check, MC, VISA (3% cc fee), no in-house buyer's premium, 10% buyer's premium online.



## 300,000 POSTCARDS AUCTION STARTS AT 3:00 PM

PREVIEW AT 7:30 AM

This huge private collection of postcards is to be sold in boxes and albums. This is a two generation collection. The cards are all vintage white border, linen, 1000's of real photos and a few chrome. The collection includes topics which are mostly unsorted, state views are sorted by towns. The collection includes 3 boxes of Santa, Holiday, Trains, Depots, Covered Bridges, Greetings, Black Americana, Children, Comic, Caves and much much more. There will be a large selection of postcard supplies, such as sleeves, pages, shelving and reference books.

**TERMS:** Cash, check, MC, VISA (3% cc fee), 10% buyer's premium. **No online bidding.**



Auction Conducted By:

**STRAWSER**

by Michael G. Strawser

200 North Main Street, Wolcottville, Indiana 46795

Office: 260-854-2859 • Fax: 260-854-3979

Auctioneer: Michael G. Strawser AU01036570 & AC30700060

Auctioneer: Ron Levitz Lic. # AU19600009

Website: [www.strawserauctions.com](http://www.strawserauctions.com) • E-mail: [info@strawserauctions.com](mailto:info@strawserauctions.com)

Member of the Indiana • Michigan • Pennsylvania Auctioneers Association





# HARLEY-DAVIDSON MOTORCYCLES & 100's COLLECTIBLES, VINTAGE VEHICLE AUCTION

## SATURDAY, NOVEMBER 20 @ 10 AM

Preview: Week of the auction from 8 AM-3 PM.  
LOCATION: WHALEN AUCTION BLDG., 8020 MANORE RD.  
**NEAPOLIS, OH** (GPS GRAND RAPIDS 43522) zone 12

ONLINE BIDDING STARTING @ 12noon with Motorcycles, Vintage Vehicles & small Harley-Davidson Collectibles. See [whalenauction.com](http://whalenauction.com) for listing & online terms.

**30+ HARLEY-DAVIDSON MOTORCYCLES:** See [whalenauction.com](http://whalenauction.com) for full listing. **VINTAGE VEHICLES:** 1976 *Pink Cadillac Eldorado convertible*, 50,577mi.; 1965 *Ford F-100* 352 CI fuel injected, C-6 auto transmission, 57,684mi, frame off restoration by Penta Career Center; 1954 *Plymouth Plaza*, 4dr. Sedan, P-25 6 cyl. 79,717mi, flathead, partially restored; 1957 *Chevy 4dr. Sedan* 210, 6cyl., 62,700mi on tach; 1926 *Falcon Knight original Sedan*, 6 cyl; 1966 *Volkswagen buggy*; 2003 *Chevrolet model C/T Cutaway van*, 63,754mi, 6.0 liter; **BICYCLES:** Harley Davidson Sportster bicycle w/original box; Harley-Davidson bicycle; 1899 Cyclone bicycle; Monster Cruiser; Harley-Davidson toddler bicycle.

**100's of Lotted and Un lotted collectibles-all Harley-Davidson Related.**

**PERSONAL PROPERTY OF THE LATE BOB SCHROEDER.**  
**OWNER: SALLY SCHROEDER & OTHERS**

**TERMS:** Cash or check w/ID, 3% processing fee on credit/debit cards. 7.25% sales tax applies. Lunch by Sandy's. **ORDER OF SALE:** Starting with small Harley-Davidson unlotted items. 12noon selling Motorcycles, vintage vehicles & itemized collectibles. Next Auction for the Late Bob Schroeder is December 4 in Leipsic w/ farm primitives, tools, shop equipment & more.


# WHALEN

REALTY & AUCTION, LTD.

**Auctioneers: John & Jason Whalen, Mike Murry, George Bly, Jacob Ramos**  
419-875-6317 • [info@whalenauction.com](mailto:info@whalenauction.com)

*Information herein deemed reliable but not guaranteed.*





# BRAUN & HELMER'S ANNUAL AUCTION EXTRAVAGANZA


## THURS., NOV. 11th @ 10 AM • A Massive amount of great stuff!

LOCATION: 5121 MICHIGAN AVE. LOCATED AT OUR AUCTION FACILITY.  
DIRECTIONS: Take Michigan Ave (US-12) to Auction. The Auction is West of Clinton MI and East of Brooklyn and Onsted MI.  
Auction is on the South side of US 12 - look for signs. Tipton is located in the Irish Hills area.

**TIPTON, MICHIGAN 49287** zone 5

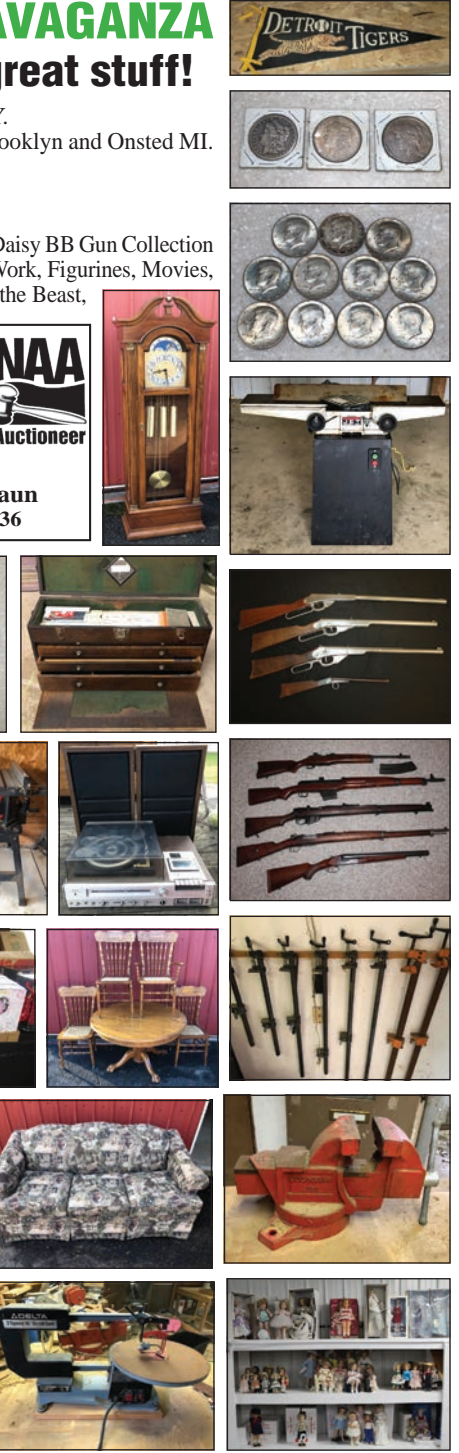
Firearms incl. Ruger Mini 14 .223, Hakim 8MM, Enfield No. I Mark III, 1935 Turkish Mauser, Spanish Coach Gun, etc. \* Ammunition \* Daisy BB Gun Collection \* Coin Collection incl. Silver Dollars, US Mint Proof Sets, etc. \* Large John Wayne Collection - 100's of items incl. Case Knives, Art Work, Figurines, Movies, & just about every JW Collectible you can think of \* Huge Doll Collection featuring Barbies, Madame Alexander, Effanbee, Beauty & the Beast, Gots, Dolls by Pauline, Dolls by Jerri, Horsman, Beanie Babies, Many more! \* Yamaha Moto 4 - 350 Four Wheeler \* Mighty Mac Log Splitter \* Bolens Chipper/Shredder \* Half a Barn full of tools incl. Woodworking \* Tool Boxes \* Hand, Yard, & Power Tools \* Lawn & Garden \* Chainsaws \* Folding Utility Trailer \* Musical Instruments \* MSU Collection \* Hockey, Football, Baseball Collectibles & Ephemera \* Misc. Christmas incl. Spode China Set \* Vintage Advertising \* Antiques \* Clean Furniture - Antique & Modern \* Electronics \* China \* Disney Collectibles \* & Much More!

**10% Buyer's Premium \* Cash or Check with I.D.**  
**500+ Pictures @ [BraunandHelmer.com](http://BraunandHelmer.com)**



**Questions? Call**  
**David Helmer**  
(734) 368-1733

**Brian L. Braun**  
(734) 368-1736





Tureens

FROM PAGE 8

artistry.” However, these visual interpretations did not necessarily provide a clue as to the sustenance inside; all for show, they were primarily meant not only to impress guests but also to serve as conversation starters. Because a meal might involve hours at the table, “they were part of the entertainment.”

Through the years, tureens have been used by people of many cultures to serve a variety of dishes, thin broths and rich stews with fish, fowl, and meat, as well as vegetable soups. Indeed, there is a universality associated with them that adds to their appeal; not surprisingly, tureens are among the holdings of numerous museums around the world. The Campbell Collection, now at its permanent home in Wilmington, Delaware, was begun in 1966, when the Campbell Soup Company’s chairman, along with its president, decided to establish a collection. Three years later, the fledgling collection was displayed at the Philadelphia Museum of Art, and then exhibited at Colonial Williamsburg the following year.

As the collection continued to grow, a museum facility was established in Camden, New Jersey, at the company’s headquarters. To share the tureens with a larger audience, a series of travelling shows ensued, and they were enthusiastically received. In 1996, Winterthur was gifted with the collection in exchange for a commitment to display the majority of the collection in a single gallery.

Today, visitors to Winterthur, located in Wilmington, Delaware, can view the collection, which includes nearly 300 soup service-related objects, 144 tureens from 21 countries. Wagner noted that although tureens are no longer a part of everyday life, visitors to Winterthur, even children, know what these serving pieces are. And the exhibit remains one of the biggest draws at the museum, with a “steady, popular interest” shown by visitors from around the world.

While tureens are found in private and public collections, there is no known collectors’ club. But Wagner pointed out that those who collect silver (she mentioned Gorham, Tiffany, and Kirk-Stieff) as well as certain ceramics (“Blue Willow,” for instance) might well have one or more tureens



Above: The heyday of green turtle soup was during the 18th and early-19th centuries, and although it was usually dispensed from tureens of standard design, sometimes a tureen such as this one was on the table. Probably made in Birmingham, England, this is one of six turtle tureens made of fused silver plate known to still exist. All images courtesy of Winterthur Museum

Below: Note the finial in the form of a dolphin atop the lid of this tureen. Made at the Worcester Porcelain Factory in the mid-18th century, this tureen was originally sold as part of a set. However, none of the sets are known to have survived together, hence the “marriage” of this tureen with a stand originally made for another.



Below: Described as “handsomely designed” and a “well-executed interpretation of an antique vase,” this tureen was made in London during the closing years of the 18th century by Robert Makepeace. Tureens in the Campbell Collection include examples made of metals and ceramics alike.



in their private holdings. Often associated with family meals, tureens are still cherished, including ones made in traditional china patterns. Holiday examples include “Christmas Tree” (Spode) and “Holiday” (Lenox), as well as in

sentimental favorites: “Yorktowne” (Pfaltzgraff), “Old Country Roses” (Royal Albert), and “Desert Rose” (Franciscan).

Even though everyday dining traditions are now more relaxed, the appeal of tureens

endures. Wagner concluded that this might be because they inspire thoughts of “sharing a meal among family and friends in a generous capacity.” Their presence on a table signals to all that “there is more than enough.” M’m! Good!

RANDY STEHLE ESTATE AUCTION

WED., NOV. 10, 10:00 AM

LOCATION: 5886 WEST “Q” AVENUE. DIRECTIONS: 2 miles south of I-94 on US-131 to Exit 31 – Q Ave., then 1 mile west.

KALAMAZOO, MI



MUSIC MACHINES, PIANO'S, PHONOGRAPHS, ELECTRONICS, RECORDS, PIANO ROLLS – Very Good Ampico Reproducing Grand Piano. There are approximately 350-450 Ampico and other piano rolls to be sold, Victor V disc phonograph with oak smooth horn; Transcription disc player, A good representation of electronic equipment with many component systems, Teac reel to reel player, Yamaha amplifier, Owl Multifiler, McIntosh Stereophonic Preamplifier, McIntosh 2100 amplifier, ; Vintage Signal processor VSP MK2 Souvenir Chronologic equalizer, etc. (see pictures), Gibson banjo and case; A large collection of 33 rpm vinyl records in sleeves; 36" Papier-mache Nipper; Victor VV-XXV Schoolhouse oak case disc phonograph with oak wooden smooth horn, a nice unit; Edison Diamond Disc phonograph, 78 rpm phonograph record albums; Nice tiger oak upright piano; Good piano roll and sheet music cabinets; Edison Triumph cylinder phonograph with Edison cygnet horn; Oak cylinder record cabinet; Over 75 cylinder records; Victor Credenza walnut phonograph, Victor suitcase phonograph, Victor VV-50 oak suitcase phono; Nipper dogs; Victor VV-IX mahogany table model phonograph, Thomas replica phonograph, Victor console phonograph, 45 rpm records; Another upright player piano; Oak two door piano roll cabinet; Antique walnut player organ; Laser Videodiscs; RCA Victor fabric store backslash. COLLECTION OF TRAINS – A good collection of trains including Lionel engines and cars, as well as Williams, Weaver, K-Line, MTH, Lionel classics, Pullman-Bradley Deluxe Coaches, Aristocraft, and others. Also, a large group of train setup and track accessories including buildings, track, and more. ANTIQUES & COLLECTIBLES & HOME FURNISHINGS – Mantel clock, Books of all types; Prints, photographs and various artwork; U of M original print of the campus, Leather wingback chair; Many good reproduction stained and leaded glass table lamps; Oriental rugs including Chinese, India and others; Wardrobe; 16mm films, group of green Fenton glass; Modern sofa; Wicker blanket chest; Keyboard; Mission style end tables; Governor Winthrop dropfront secretary with top bookcase and broken arch pediment; Pots and pans, Small appliances; Train motion lamp; Binoculars, movie camera, fruit jars; Ornate 1920's bridge lamp; Shelving units; Oak single door bookcase; Diecast cars, Coca Cola ice cooler; Blue and white china including Staffordshire Historic Scenes, Triple Weight Grandfathers clock; Cobalt blue glass, 100's and 100's of VHS & DVD movies; Dehumidifier; Queen size bed; Vacuum sweepers; NYC railroad lantern, Keen's Mustard porcelain sign; Derby hat; Oak china cabinet, Hand painted china; A large qu. of music CD's, Telescopes, Victorian pump organ; A large group of antique sheet music; Antique multi-drawer file cabinet; Modern roll top desk; Patio furniture, Mahogany sheet music cabinet; Well pulley; Foot locker; Group of Looney Tunes glasses; Opalescent 3-cherry pattern glass; Weber grill; Railroad can; Crocks; Planters peanut jar; Kirby vacuum sweeper; Forest green glass, Beam bottles, Stationery steam engine, LAWN AND GARDEN ITEMS – Track driven snowblower, Craftsman chipper/shredder; Front tire rototiller; Aluminum step and extension ladders, Line & hedge trimmers; AgriFab lawn sweeper. AUCTIONEERS NOTE – We will be selling in two rings throughout the course of the sale. Be on time and take advantage of this offering. We are still sorting and prepping for the sale. ALSO SELLING THIS EXCELLENT REAL ESTATE WITH A GOOD RANCH STYLE HOME SITUATED ON 2 ACRES OF LAND. THE REAL ESTATE SELLS AT 12:30 PM.

Ph. 517-726-0181 Fax 517-726-0060 e-mail: stantonsauctions@sbcglobal.net www.stantons-auctions.com 144 S. Main Street, P.O. Box 146 Vermontville, MI 49096 Selling all types of personal property and real estate at auction anywhere. Call for a no-obligation consultation to discuss your personal situation.



EXCELLENT ESTATE AUCTION

COLLECTOR'S CARS, MOTORCYCLES, DUNE BUGGY, FINE ARTWORK, PETROLIANA, GLASS & POTTERY SATURDAY MORNING, NOVEMBER 13TH @ 9:30 AM

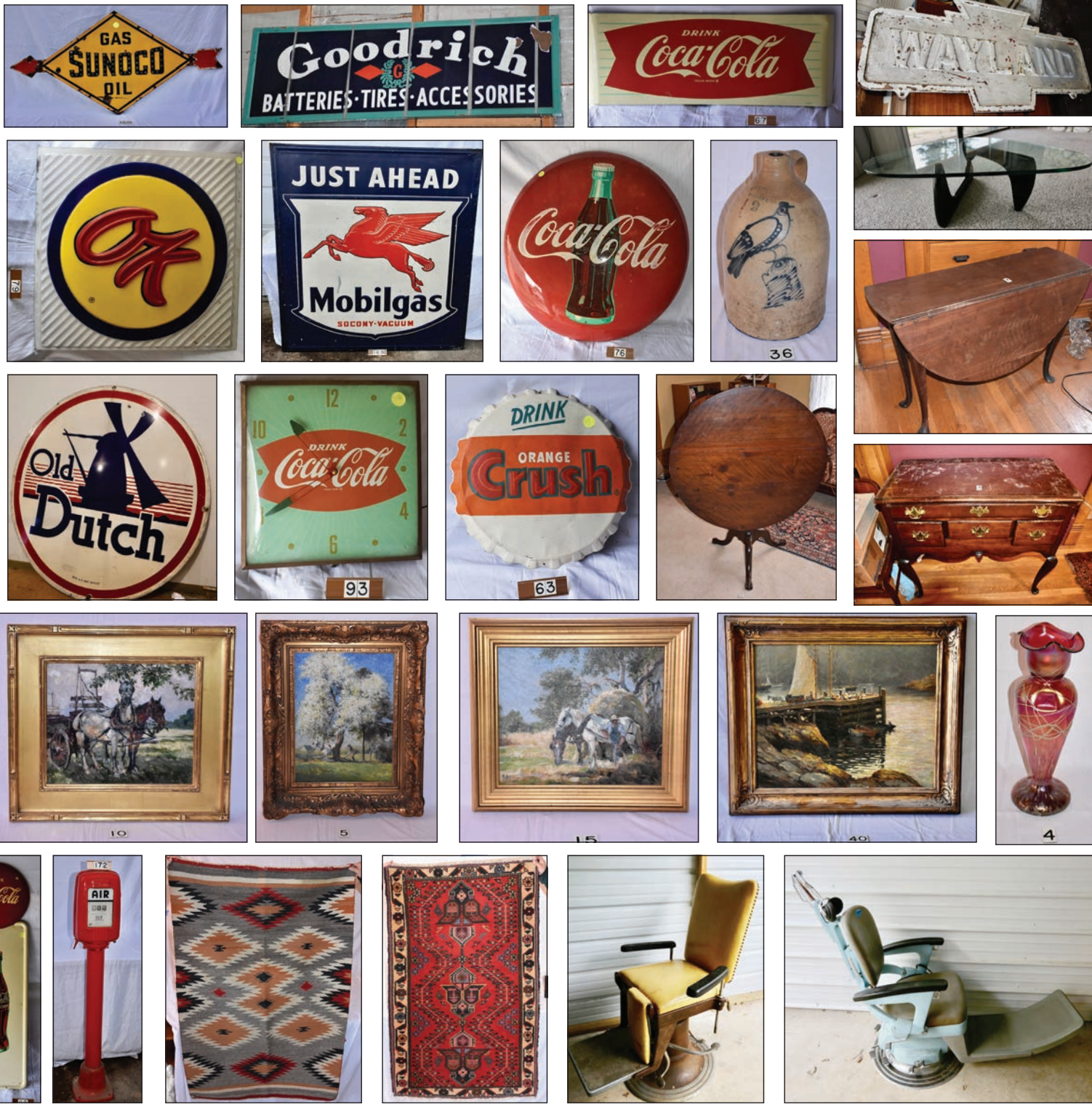
LOCATION: BARRY CO. EXPO CENTER, 1350 N. M-37 HIGHWAY. DIRECTIONS: 4½ miles northwest of Hastings.

HASTINGS, MICHIGAN

This auction represents a combination of two Estates including the George Williston Estate representing an excellent group of Artwork (Mathias Alten, Frederick Ramsdale, Emile Gruppe, Cilfone, etc.), Turkish oriental rugs and camel bags including a good representation of flat woven, as well as 12 Persian oriental rugs with signed examples in various sizes (scatter, room size and runners, Bayre & contemporary bronzes, early American furniture, pottery (Cowan, Rookwood, Weller, VanBriggle), glass, paperweights, and more along with a Wonderful collection of antique and collectors cars coming from the Spring Lake VanHemert Estate with a 1966 Restored Corvette, 1969 Corvette, 1990 Corvette, 1996 Ford Mustang Cobra SVT, 1972 Chevy Camaro and 1967 Chevrolet Malibu with a 572 engine (this was written up in the Hotrod magazines), all in restored or excellent condition, as well as two motorcycles with a 1987 Kawasaki ZL1000, 2006 Yamaha SZ1 (again both in excellent condition), also a NOS large Pegasus full body red sign (this was uncrated and put on the wall inside the owners garage), 72" Old Dutch porcelain gas station sign, Rare Chrysler Plymouth Approved Service 42" sign, Northern Pacific Radio Framed Poster, 40" wide x 50" high, Cast Iron "Wayland" Pennsylvania depot sign; Eveready porcelain sign, a large group of Coca Cola signs, 20+ electric advertising wall clocks, Isumu Noguchi signed coffee table, lots more. Continue to watch this site for updates. This is an excellent and diversified event. Please also note that we will be selling a group of uncataloged items during the sale.

The auction will be live and on-site and also is now posted on Liveauctioneers.com for online bidding. If you are unable to attend we will offer the possibility of "left" bids or phone bidding.

Ph. 517-726-0181 Fax 517-726-0060 e-mail: stantonsauctions@sbcglobal.net www.stantons-auctions.com 144 S. Main Street, P.O. Box 146 Vermontville, MI 49096 Call Steven E Stanton 517-331-8150, Email – stevenEstanton@gmail.com, or Michael C. Bleisch 517-231-0868, Email – mcbleisch@gmail.com Selling all types of personal property and real estate at auction anywhere. Call for a no-obligation consultation to discuss your personal situation.





# Pook & Pook Inc.

AUCTIONEERS AND APPRAISERS

with

NOEL BARRETT

ANTIQUES & AUCTIONS LTD

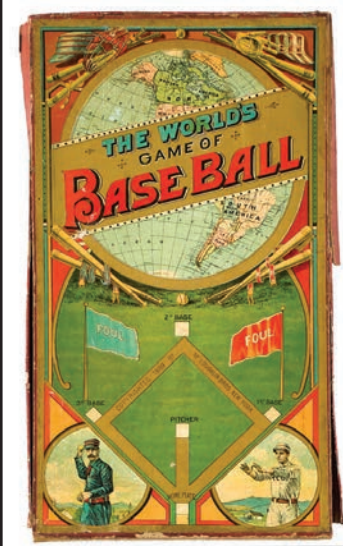
## ANTIQUE TOYS & BOARD GAMES

FRIDAY, DECEMBER 3, 2021 AT 9AM

LIVE SALESROOM, PHONE,  
ABSENTEE & ONLINE BIDDING  
ON [BIDSQUARE.COM](http://BIDSQUARE.COM) & [INVALUABLE.COM](http://INVALUABLE.COM).

IN-HOUSE SHIPPING AVAILABLE FOR MOST LOTS.

GALLERY LOCATED AT 463 E. LANCASTER AVE., DOWNINGTOWN, PA 19335 | (610) 269-4040  
[TOYS@POOKANDPOOK.COM](mailto:TOYS@POOKANDPOOK.COM) | [TOYS@NOELBARRETT.COM](mailto:TOYS@NOELBARRETT.COM) | [WWW.POOKANDPOOK.COM](http://WWW.POOKANDPOOK.COM)



### GALLERY EXHIBITION

TUESDAY, NOVEMBER 30TH, 2021, 10AM TO 4PM  
WEDNESDAY, DECEMBER 1ST, 2021, 10AM TO 4PM  
THURSDAY, DECEMBER 2ND, 2021, 10AM TO 4PM



**MICHAEL RIDGE ESTATE AUCTION**  
**SATURDAY, NOVEMBER 13, 10:00 AM**  
LOCATION: 3471 BALMARS.  
DIRECTIONS: US127 to the Parnall Rd/M50 exit #45, east 1 block on Parnall to Morril Rd, north on Morril 7/10 mile to Wunders Ct, east 1 block to Balmars, south to the sale.  
**JACKSON, MICHIGAN 49201** zone 5

The following estate property will be sold at public auction to the highest bidder:



**OLD THINGS & COLLECTIBLES:** Johnson 15 boat motor; Chrysler 6.6 boat motor; Evinrude Lark III Mod 35525 boat motor; Butcher block; Jarts lawn game; Ash Flash gasoline lantern mod 1010; Barbie doll case w/dolls; Fisher-Price wood toys; Buddy L Store Delivery pressed steel truck; Old Pal minnow bucket; Assorted glassware & china; Technics turntable; Coca-Cola mirror; Cast-iron stagecoach door stop; Old marbles; Wrought-iron patio table w/4 chairs; Tubs of old Christmas decorations; Heywood Wakefield bamboo corner & 2 end tables; Plank blanket chest; Carpenter's tool chest; Star Wars Chewbacca figure in box; Gemeinhardt flute; Elgin 17j swing out case pocket watch; Elgin hunting case lady's watch; Folk art walnut saving box; Men's & ladies' wristwatches; 10K Class ring; Costume jewelry; Snowshoes; Hit Supreme X1062-X 66" 46# recurve bow; Balada-Werk Bunde Prontor-SVS 35mm camera; 2 Team Menard Lola Menard cars; Schrade stag handle hunting knife #491; 33Rpm records w/60's rock bands; 45RPM (few); Miner's lunch pail; 2 Kid's lunch pails; Box games; 2 Ceramic Christmas trees; Melmac dishes, new in box; Louis Marx Diesel type train set.  
**COINS:** 34 Indian Head cents; 5 Buffalo nickels; Lincoln cents; 4 1964 Kennedy halves; Clad halves; Few silver quarters & dimes; 4 George Washington 90% COMM halves; 2 1971 Eisenhower proof dollars; 1972, 75, 82 proof sets.  
**HOUSEHOLD:** Commercial meat slicer; Many new small items in boxes; Magic Chef 5cf chest freezer.  
**GARAGE:** Tradesman contractor table saw; Werner 8' fiberglass stepladder; Golf clubs; Shag golf balls; Many other items.

**TERMS:** Cash, checks, credit cards. All items will be sold as is. The seller nor the auctioneer will be responsible for accidents day of sale or items after sold.

**SARAH LACK, OWNER**



**Mel White**  
Auctioneer • Appraiser

50 Years Service  
**Okemos, MI**  
**517-394-3006**  
E-Mail: melw21588@gmail.com  
Web: www.melwhiteauctioneer.com



**SWINGLE ESTATE AUCTION**  
**SATURDAY, NOVEMBER 13<sup>TH</sup> • 9:30AM**  
**8140 NORWALK RD., LITCHFIELD, OHIO**

**20 TRACTORS • 7 OLIVER/CLETRAC DOZERS • FARM EQUIPMENT SHOP TOOLS • HOUSEHOLD & COLLECTIBLES**

Will sell at the farm located at 8140 Norwalk Rd. Litchfield, OH. From the traffic circle in Litchfield go east on SR 18 (Norwalk Rd.) 2 ½ miles to farm on south side of highway.

**TRACTORS \* John Deeres – 4430, 5020, 4320 4 WD, 4020, 2 – 3020's, 2020,1020, IH 3588 2+2 4WD, White 2-150, Case 580 Backhoe, Case 1835C skid steer loader, Owatanna 330 skid steer - ANTIQUE TRACTORS:** Baker 25-50 tractor w/Wisconsin Type B-3 gas engine (C2889); MM Mod. Z, MM mod. KT 100-A (in the middle of restoration); Case SC gas tractor Cockshutt 30 (T9207X), Massey Harris, AC WC; AC WD, Oliver. Large old threshing machine (Stencil – Baker Swanton, OH).

**EDSEL & 7 CLETRAC DOZERS:** '59 Edsel Ranger 4 door Sedan; Cletrac w/shopmade winch & 7'blade, 6 cyl flathead gas engine, 12" tracks; Oliver/Cletrac w/cable winch 7'6" Heil blade, 16" tracks, 6 cyl flathead gas engine; Cletrac w/7' Heil blade, 6 cyl. flathead gas engine & 14" tracks; Cletrac w/diesel engine, 9' Heil blade & 16" tracks; Oliver/Cletrac mod. HG68 orchard crawler w/pto, draw bar, 10: tracks (43GA532); Oliver/Cletrac dozer w/Hercules Diesel, 11' 6" blade, 22" tracks; Cletrac dozer w/flathead 6 cyl. gas engine, no blade, 16" tracks. These crawlers have set idle for several years and are not currently running. All engines are free and all undercarriages roll.

**FARM EQUIPMENT HIGHLIGHTS:** Good Gehl 2345 discbine; NH 256 Rol-A-Bar rake; Nice Gehl RB 2780 round baler, variable open throat, string tie, liquid applicator (SN 17808); Case IH 5100 Soybean Special 21x7 grain drill (no grass seeder), good condition; NH 273 baler w/kicker; good 18' pipe rack bale wagon.

**NOTE:** A really large auction with selling in 2 – 3 rings in the morning. Hopefully ready for Tractors & Farm Equipment by approx. 12:30. Offering online bidding thru ProxiBid for Tractors and Farm equipment. Go to the website for a complete listing or drive by the farm and pick up a brochure for a more detailed listing and pictures. **Preview Friday Nov. 12<sup>th</sup>.**

**TERMS:** Cash – Check. LUNCH STAND.  
Visa-Mastercard-Discover-Am. Express. 5% BP waived for cash or check

Auction By Order Of: **NANCY MILLER, EXECUTOR, PATTY REISNER, EXECUTOR**  
Estates Of **CHARLES E. SWINGLE & CHARLES E. SWINGLE JR.**  
Medina Co. Probate Case No. 2020 11 ES 00520; 2020 12 ES 00572



**Steve & Seth Andrews**  
AUCTIONEERS

Assisting Auctioneers  
Jason Kriegmont Jr.  
Brad McGovern  
John Kline



**RES**  
AUCTION SERVICES

**Call: (330) 465-8498 or Visit: www.RES.bid**



**Chuck Cryderman & Associates LLC**  
Gary M. Berry - Auctioneers  
Auctioneers-Certified Appraisers-Realtors

**LARGE PUBLIC ONLINE AUCTION** zone web

**MULTIPLE MUNICIPALITIES SURPLUS EQUIPMENT** zone web  
**SATURDAY, NOVEMBER 13**  
**8 AM to 4 PM**



**Preview:**  
**Wed. 11-10-2021, 11 AM to 1 PM &**  
**Sat. 11-13-2021, 9 AM to 1 PM**

**Multiple Entities Offering Surplus Items**

Vehicles, Pickups, Vans, Dump Trucks, Ambulances, Firetruck, Motorcycles, Roller, Cement Saw, Plus Misc.

**Visit Website for Multiple Viewing Locations, Complete Info, Catalogs, Photos.**

**CHUCK CRYDERMAN & ASSOCIATES LLC**  
Gary M. Berry  
586-784-8890 • 248-299-5959  
crydermanauctions.com  
garymberry.com





**Chuck Cryderman & Associates LLC**  
Gary M. Berry - Auctioneers  
Auctioneers-Certified Appraisers-Realtors

**LARGE PUBLIC ONLINE AUCTION** zone web



**JAMES WARREN ESTATE SALE**  
**SAT., NOV. 13, 2021, 8 AM to 4 PM**

**LOADER TRACTOR, TRAILER, FARM EQUIPMENT, HUNTING AND SPORTING EQUIPMENT, TOOLS, WOOD SPLITTER, GLASSWARE, ANTIQUES, CROCKS, OLD GAMES AND MUCH MORE.**



**Viewing/Payment/Pickup:**  
4910 Cuttle Rd., St. Clair, MI 48079

**Viewing:**  
Tuesday, 11-9-2021, 2 PM to 5 PM

**Payment/Pickup**  
Sunday, 11-14-2021, 1 PM to 5 PM

Visit Website for Catalog & Photos.

**Chuck Cryderman & Associates LLC**  
Gary M. Berry Auctioneers  
586-784-8890 248-299-5959  
crydermanauctions.com  
garymberry.com





# Cockatoos popular Art Nouveau motif

**Q** I recently came across a cockatoo wall pocket signed by Delphin Massier, a French potter. I spent hours trying to find an identical example online. I could not find one anywhere. I did see a rooster head wall pocket signed by Massier. What would be a reasonable value for a cockatoo wall pocket?

**A** Delphin Massier (1836-1907) was a member of the Massier family, a dynasty of ceramists established by Pierre Massier (1707-1748) in Vallauris, France. Pierre Massier was succeeded by Jacques Massier (1806-1871) who was responsible for giving the Massier workshop a new lease on life by expanding its production from simple utilitarian ceramics to innovative and artistic art ceramics. Italian potter Gondolfi Gaetano arrived in 1859. He trained Delphin and his brother Clément (1844-1917).

When Jacques died in 1871, Delphin and Clément inherited the firm. Their cousin Jerome (1830-1915) joined the firm. Eventually, the brothers separated and moved to different locations within Vallauris. Jerome's son Jean Baptiste Massier gained control of the initial workshop site. He produced polychrome enameled faience destined for use in the garden or home.

Massier family production peaked at the turn of the 20th century. Massier issued elaborate sales catalogs picturing its merchandise. The catalogs allow the identification of Massier molds as well as showcasing the diversity of its products.

Massier produced pieces that were representative of popular period design styles. At the end of the 19th century, Delphin and Jerome devoted their design efforts to Art Nouveau. The cockatoo was a popular Art Nouveau motif.

Freeman's, a Philadelphia auction firm, offered a Delphin Massier majolica swallow wall pocket at its January 28, 2020 auction. It sold for \$552.50. WorthPoint.com's Worthopedia has a listing for an identical example that brought \$229.50 on eBay on October 25, 2020.

Worthopedia also contained a listing for a Delphin Massier cockatoo head wall pocket that realized \$519.00 on eBay on December 3, 2007. Because molds were created, this is most likely the piece you came across.

Given the above, your cockatoo head wall pocket has a secondary market value between \$500 and \$560. Secondary market demand for Delphin Massier three-dimensional animal figures and many vases is much higher.



**Q** I inherited a deep oval, pinkish glazed bowl, possibly a centerpiece bowl, from my parents. They lived in Santa

## RINKER ON COLLECTIBLES



BY  
HARRY L.  
RINKER

Monica, California, when they acquired it. The inscribed mark on the bottom reads: "WINDFIELD / 418 / PASADENA." There is a penciled "9" to the right of the "418." I have no idea what this means. What history and value can you provide for my bowl?

**A** Winfield Pottery, also listed as the Winfield Pottery/China Company, was founded in 1929. Originally located in Pasadena, California, Winfield Pottery moved to Santa Monica in 1946.

Winfield's primary product line was dinnerware, the most frequently encountered Winfield product when researching the company on the internet. In addition to dinnerware, Winfield made tabletop decorative accessories, such as bowls and ashtrays. Most were glazed with a single color or two colors – one on the outside and the second on the inside. These pieces were similar in design to tabletop decorative accessories made by rival west coast potters such as Bauer.

Your pinkish color sings early 1950s, when charcoal and pink were popular household and fashion colors. "418" is the mold number used to create the bowl. The "9" most likely represents a secondary market sale price. Nine dollars is far too high a price for this piece in the 1950s.

In 1946, the American Ceramic Company, also located in Santa Monica, bought the rights to manufacture some of the Winfield patterns. Hence, American Ceramic Company's "Gabriel" trademarked pieces are identical to the patterns on Winfield dinnerware. Winfield Pottery ceased operations in 1962, one of the many victims of cheap foreign imports and the rising popularity of plastic dinnerware.

My internet research revealed limited information about non-dinnerware Winfield pieces. I found a few references to Winfield's Duotone [two colors – one inside, one outside] line. I also found Winfield dinnerware pieces that had the same pink glaze found on your bowl. Using these prices for comparison purposes, a fair secondary market value for your bowl west of the Rockies is \$12 to \$15 and east of the Rockies \$8 to \$10.

**Q** I acquired a Paine Furniture Company wall shelf. It consists of three shelves. The second and third shelves are separated by Colonial-style, lattice work sides. The back of the bottom shelf is marked "43.7083." Other than needing a good cleaning and



having some scratches, it is in excellent condition. I am trying to determine its worth.

**A** The Paine Furniture Company was a large furniture company/store located in Boston. The first floor of its building, with entrances on Arlington, Stuart, and St. James, contained the lobby and retail sales gallery. The upper floors featured showrooms for accessories, bedding, draperies, furniture, and rugs in addition to manufacturing, repair, and upholstery areas. In addition to producing its own brand name furniture, Paine Furniture also sold furniture made by other manufacturers.

No one is going to collect 50 wall shelves, albeit I know individuals who own a dozen or more. The latter use them to display their smalls. The value of your wall shelf is a combination of decorative value (a welcome accessory for a Colonial Revival room setting) and reuse (functional no matter in what decorative setting it is used.). The fact that it was made by or sold by Paine adds no additional value.

If it needs a good cleaning and has scratches, it is not in excellent condition.

As it stands, the value of your wall shelf is around \$25. After you have cleaned it up and fixed the scratches, its value increases to \$40.

Harry L. Rinker welcomes questions from readers about collectibles, those mass-produced items from the twentieth and twenty-first centuries. Selected letters will be answered in this column. Harry cannot provide personal answers. Photos and other material submitted cannot be returned. Send your questions to: Rinker on Collectibles, 5955 Mill Point Court SE, Kentwood, MI 49512. You also can e-mail your questions to harrylrinker@aol.com. Only e-mails containing a full name and mailing address will be considered.

Shipshewana  
TradingPlace  
EST. 1922

**Auction & Flea Market**  
**Shipshewana Antique & Misc. Auction**  
**Wednesday, November 10 @ 9AM EST**  
**Selling in Row 4, Spaces 11-19**



Early Wooden  
Polychrome Toy



1890  
Carpenter's Bench



Early 1870's  
Folk Art Dollhouse



Early Stoneware

**Preview more items on AuctionZip.com**  
**Auctioneer ID # 1945**

345 S Van Buren St, Shipshewana, IN 260-768-4129

**Timed Online Only Auction**

**Lots Begin Closing: Thurs, Nov. 18 • 5pm**  
*Woodburn, IN*



**Location of Items:** 23721 Hoeppner Ln Woodburn, IN 46797

- **Clocks • Vintage Electronics**
- **Atari • Furniture • Collectables**
- **Rugs • Art • Tapestry • Toys**
- **Dolls • Musical Instruments**
- **Garage/Outdoor Items • Misc.**

**Inspection Dates:** Mon, 11/15 from 1-5:30pm  
**Pickup Dates:** Fri, 11/19 & Sat, 11/20 from 9am-4pm

**Seller:** Carol Grimm  
**Sale Manager:** Robert Mishler • 260.336.9750

**TERMS:** 12% buyers premium. Cash or Check w/proper ID. 4% surcharge for credit cards. Announcements made the day of the auction take precedence over any printed material. Not responsible for accidents.

**SCHRADER**  
Real Estate and Auction Company, Inc.

**800.451.2709**  
**SchraderAuction.com**

#AC63001504  
#AU08701553

**ESTATE AUCTION**

**33371 Oakleaf Trail, Colon, MI 49040**

**Directions:** M-86 towards Colon, turn north on N. Burr Oak Rd. turns to Wattles Rd. Follow Wattles to North on Stowell Rd. to Oakleaf Trail.

**SUNDAY, NOVEMBER 14**  
**12:00 NOON**

**REAL ESTATE:** Singlewide trailer with 2 car garage, large deck off the back, porch on front and over 1 1/2 acres. Garage is 24x32. Selling with Rock Realty as listing agent. Sellers have the right to accept or refuse any offer. Winning bidder will need \$2,500 earnest deposit sale day and close on or before 45 days. Home sells non-contingent upon financing. All inspections prior to auction, selling as-is, where is, no warranties offered.

**VEHICLES:** 2007 Hundai Sonata, 1990 Mazda Miatz MX5 convertible (is not running), 1975 Dodge Winnebago Motorhome (needs work).

**GARAGE:** John Deere 155C lawn tractor, Troybilt pony lawn tractor, Rigid table saw, Jet table saw, Delta chop saw, Rigid shop vac, hand planer, framing nailer, biscuit jointer, sanders, wood clamps, pole saw, too boxes, socket sets, wrenches, hand tools, power tools, 16' ext. ladder werner, fiberglass step ladder, extension cords, snowblower, patio furniture, outdoor statues, shepherds hooks, poly lawn trailer, kayaks.

**HOUSEHOLD ITEMS:** Freezer, lift chair, figurines, sound system, roller shelving, lighting, computer desk and items, entertainment stand, item for performing magic tricks.

**ESTATE OF THE LATE RONALD CARNELL**

for pictures and more info visit [auctionzip.com](http://auctionzip.com) #26461 or [www.burnsauctioneers.com](http://www.burnsauctioneers.com)

**Burns Auctioneers**  
Steve Burns 517-617-5487



# PUBLIC AUCTION

Saturday, November 13th, 2021 • 10:00 a.m.

Located at: 1900 W. Fitchburg Road Leslie, MI 49251

Directions from Mason: Take South Main Street to Mill Street, Turn Left 1/2 Mi. to Auction Site - (just outside the city limits).

**HOUSEHOLD:**

- Bissell Quick Steam Pet Shampoo
- Kenmore Sewing Machine
- Small Plastic Tables & Chairs
- Duncan Fife Buffet
- Marble Top Coffee Table & 2 Stands
- (2) Hurricane Lamps
- Oak Glider Rocker
- (3) Bar Stools
- Corner Stand
- New Ceramic Heater
- New Patio Rocking Chair
- 75" Couch
- Plant Stand
- Tiffany Lamp
- Fireplace Heater
- Bedroom Suite
- Keurig Coffee Maker
- Christmas Decor
- Costume Jewelry
- Cookbooks
- Drum Table

**ANTIQUES:**

- Glassware
- (6) Roseville
- Crystal
- Fenton
- Yorkshire China - 8 Place Settings
- Hall's Glassware
- Temptations Glassware
- Pampered Chef
- McCoy Kookie Kettle
- Small Singer Sewing Machine Handcrank

**GUN:**

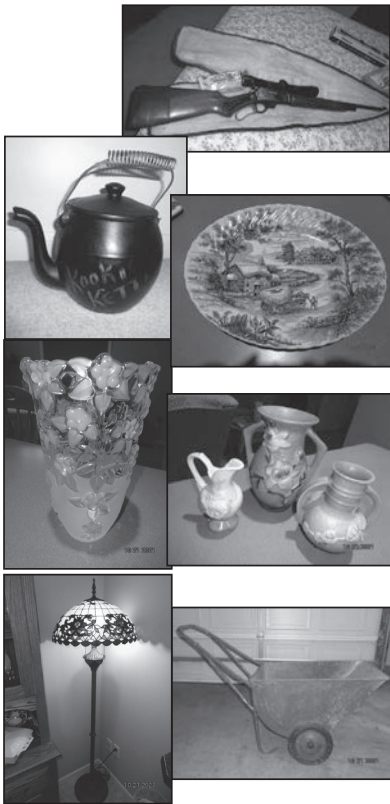
- Glenfield Model 30 (Marlin) 30-30 Rifle w/Scope

**TOOLS:**

- 8' Fiberglass Step Ladder
- Snow Fence
- Gas Grill
- Aluminum Extension Ladder
- Lots of good Yard Tools
- Dutch Windmill
- New Shop Force 1000 w Generator
- Bench Grinder
- New Little Giant Ladder
- Toro Snow Blower
- (2) Aluminum Step Ladders
- (2) New Battery Chargers
- Wet/Dry Vac
- Electric Power Washer
- Car Ramps
- Battery Weed Whip & Leaf Blower
- New Battery Snow Shovel
- Snow Rake
- Car Jump Start
- Snowmobile Suits

**MISC. ITEMS :**

- Older Huffly Bike
- (5) Boxes of Canning Jars
- Blue Canning Jars
- (2) Small Patio Tables & Chairs
- Gallon Square Tub
- Milk Can
- Metal Garden Cart



Owner: Judy Foreman

Note: Judy has sold her house and is downsizing. Everything is very well taken care of and clean. Many new items.

**TERMS:** Cash, Check, Visa, Mastercard or Discover with proper ID. 3% Buyers Fee is charged but will be waived for cash or check. Not responsible for accidents. Everything is sold as is where is. To view pictures: [www.auctionzip.com](http://www.auctionzip.com) • I.D. #2699 or [www.gotolaauction.com](http://www.gotolaauction.com) #2112



**YUTZY'S**  
Auction & Appraisal Service  
"See Us For ALL Your Auction Needs"  
Farm • Estate • Livestock • Real Estate • Personal • Liquidation  
**Lavern Yutzy, Auctioneer**  
4431 N. Chester Rd., Charlotte, MI 48813  
(517) 543-7113 • FAX (517) 543-8477

# LANDSCAPING AUCTION

TRUCKS – TRAILERS – BOATS – SHOP TOOLS  
LAWN EQUIPMENT

**SATURDAY, NOVEMBER 20, 10:00 AM**

LOCATION: 7750 S. SPRINKLE ROAD.

DIRECTIONS: From I-94 take Exit 80, then south on Sprinkle Road to Five Star Storage facility on west side of road.

**KALAMAZOO, MICHIGAN** zone 4

**VEHICLES:** Ford F-350 4x4 w/dump box, 7.3 diesel V-8, dual rear end, Western plow hook up; Dodge 2500 V-8 4x4, 8 ft. box w/Boss plow hook up; Dodge 2500 V-8 4x4, 8 ft. box, Hemi engine; Boss 9 ft. V snowplow; 8 ft. rear hydraulic box blade; 1965 Ford Mustang, needs complete restoration; 6 flatbed trailers, one electric 12 ft. dump trailer; 8 ft. Henderson Chief salt spreader on wheels; Monroe 8 ft. salt spreader; slide in salt spreader. **TRAILERS:** Several tandem drop gate flatbed trailers; 12ft. dual axle dump trailer; Henderson Chief salt spreader; Monroe 8ft. salt spreader; **BOATS:** 18 ft. Astro fiberglass bass boat w/150 hp. Mercury motor; Hawg Wild 16ft. V bottom Pro Angle 40hp Forced motor & trailer; Vehicles will sell at Noon followed by the boats & trailers. **LANDSCAPING EQUIPMENT:** Scag & Toro zero turn mowers; Toro Grandstand mower; Walk behind mowers & Leaf blowers; Backpack blowers; Tree saws; Edge trimmers; **CHAIN SAWS:** Stihl, Echo, & Husqvarna chain saws from 16" to 34" bars; Gas weed trimmers; **CAR LIFTS:** Snap-On Model 320 7000lb. 2 beam lift; Forward 9000lb. DP-97 2 beam lift; Homemade High-beam lift; **OTHER EQUIPMENT:** Big Joe Model 2024-T9 2000lb. electric forklift; Salt spreaders; 1 1/2 ton engine hoist; Gas powered lawn aerators; Stump machine; Snow blowers; **SHOP TOOLS:** Vulcan Protig 205 aluminum welder; Clarke Flux-Core mig; Jegs plasma cutter; Metal band saw; Large Husky tool chest; Torch set w/cart & tanks; 1 1/2 ton Engine hoist; Magnum Force 5hp upright air compressor; Hunter tire changer; Transmission hydraulic jack; Large assortment of hand tools; plus much, much more.

Majority of items will be sold in pole barn.

**TERMS:** Cash, Check, Credit Card. 4% Premium with credit card use. For a complete listing & pictures visit our website.



**1106 S. Kalamazoo Ave., Marshall, MI 49068**  
Phone: 269-781-7100 or Fax: 269-781-7204  
Website: [www.belcherauction.com](http://www.belcherauction.com)

# ADVERTISERS

To avoid the unfortunate possibility of not having your ad reach 25,000 potential buyers, confirm that your ad has been received at our office, (888) 339-3795

## REAL ESTATE & PERSONAL PROPERTY LIVE PUBLIC AUCTION THURSDAY, NOVEMBER 11 @ 3:00 PM

LOCATION: 3869 E. HYDE RD.

DIRECTIONS: N. of St. Johns on US 127 Four miles to W. Hyde Rd, E. 4 miles OR W. of Elsie on E. Island Rd to Watson Rd, N. to Ridge Rd, W. to Auction.

**ELSIE, MICHIGAN** zone 5

Mr. & Mrs. Campeau have moved into apartment and selling articles no longer needed. Personal Property begins at 3:00 PM while the Home will sell at 5:01 PM.

10% BP.



**REAL ESTATE (Sells at 5:01 PM):** 4 Bedroom, One Bath Home with attached single stall garage on 3 acres. Two Outbuildings all surrounded by farm land. Upstairs has Storage and One Bedroom. 3 Bedrooms & Bath on Main Floor. Cement Basement has Furnace & Water Heater. Home sells AS-IS. 10% BP. For complete list of terms & Legal Description see website.

OPEN HOUSE (COME VIEW THE HOME):

WEDNESDAY, NOVEMBER 3RD, 4:00 TO 5:30 PM AND

SUNDAY, NOVEMBER 7TH, 1:00 PM TO 3:00 PM.



**PERSONAL PROPERTY BEGINS AT 3:00 PM:** Consists of Household, Collectibles & Antiques, Tools, Lawn Tractor, Stove, Freezer, (2) Refrigerators, Washer & Dryer, Ford 8N Tractor, Implements, and 30 ft Camper.

DALE & BETTY COMPEAU, SELLERS



**(616) 754-9437**  
[www.MerrittAuctionService.com](http://www.MerrittAuctionService.com)



# ESTATE AUCTION

**SATURDAY, NOVEMBER 13, 10:00 AM**

LOCATION: 160 SOUTH MINGES ROAD.

DIRECTIONS: From I-94 take Exit 97 then north to first stoplight turn left (next to BP Station) 1 1/2 miles.

**BATTLE CREEK, MICHIGAN** zone 4

**AUTOMOBILE:** 2014 Ford Fusion SE Titanium, 16,129 miles, leather, heated seats & steering wheel, back up camera. **NOTE:** Car will sell at 12 PM. **JEWELRY:** Shell Cameo gold ladies ring; ladies diamond w/amethyst gold ring; opal & gold ring; Mother of Pearl bracelet; pearl & diamond rings; pendants; necklaces; costume jewelry; miniature sterling perfume bottle; gold & silver chains, unmarked; women's wrist watches. **JEWELRY WILL SELL AT 10 AM.** **DISHES, SILVER, ANTIQUE RUG, FURNITURE:** Assorted Japanese items inc. platter, map of Japan porcelain, wall art, scroll, bowl, figurines & vases, 12 plates; Oriental china; Ivory Cribbage Board; flatware; sterling coffee set; 12 sterling spoons; Wedgewood knives; antique cups & saucers; Noritake cups; Depression Glass; antique castor set; several pocket watches; Persian rug; German 3 weight grandfather clock; walnut 3 drawer chest; painted kitchen cabinet; two walnut two drawer chest; antique Rosewood 83" sofa; 27"x7"x8" hall mirror; walnut base white marble top occasional table; Mother of Pearl inlay coffee table; massaging rocker/recliner; velvet rocker & straight chair; swivel rocker; crocheted chair; marble base stand; marble Tiger 7"x20"x11"; walnut dish cabinet; walnut drop leaf dining table, leaves; 4 cane seat dining chairs; 54" full size bed; walnut w/burrell inlay washstand; 6 drawer dresser; OG wall mirror; 4 drawer chest w/hanky drawers; music cabinets; drop front desk; cedar chest; glass top computer table; trunks & lockers. **GEORGE STECK BABY GRAND PIANO;** Roland electric Harpsichord; Melodeon; Crestwood guitar; 1930's violin. **LAMPS:** Mother Of Pearl table lamp; marble shade table lamp; antique pull down cast iron hanging lamp, milk glass shade. 2 scrolled Asian lamps. **PRINTS:** 4 Oriental seasonal prints; Oriental picture of Cranes; 3 Zelma Frost framed prints. **BASKET:** Unusual Tanglewood. **ELECTRONICS:** Sanyo 32" HDMI TV; Kenwood cassette deck & Pioneer speakers; Dell tower computer; laser printer. **MISC:** Bronze 7 marble book-ends; oil lamps; Kangaroo string holder; brass pirate monocular telescope; several pieces antique women's clothing & shoes; crocks; linens, sewing & quilting supplies; bedding. **CHRISTMAS DECORATIONS; FROM GARAGE:** 21" self propelled mower; Murray MT Climber girl's 10 speed, Kent 1800 18 speed boy's, like new!, girl's 3 speed bikes; garden tools. **NOTE:** Furniture, trunks, lamps & wall hangings will sell in house. Jewelry, glassware, linens, Christmas items will sell in garage & tent if inclement weather.

**TERMS:** Cash, Check, CC. Statements made day of auction take precedence over printed matter. This is a very diverse auction that will warrant your attendance. For detailed listing and pictures go to [www.belcherauction.com](http://www.belcherauction.com)

FRANCES ISAAC, TRUST



**1106 S. Kalamazoo Ave., Marshall, MI 49068**  
Phone: 269-781-7100 or Fax: 269-781-7204  
Website: [www.belcherauction.com](http://www.belcherauction.com)



# The Antique Shop & Mall Guide

## ZONE 1

**MIDTOWN BAKERY & ANTIQUES**  
317 Iron St., Negaunee, MI 49866  
Ph. (906) 475-0064  
e-mail: midtown00@chartermin.net  
Web: www.midtownbakery.com  
5,000 ft. of Mission; art pottery; Deco; cottage; primitives; garden & architectural. Also, almost world-famous cheesecake & gourmet desserts.  
Hrs.: Mon. - Fri., 7AM - 6PM; Sat. 10AM - 5PM; Sun., 12PM - 4PM.  
Owner: Marybeth Kurtz

**PORTAGE CREEK ANTIQUE MALL**  
N-925 4 Hwy. 33, Manistique Lakes Rd., POB 435, Curtis, MI 49820 - 8 mi. off US2  
Ph. (906) 586-3905 or (906) 586-6276  
e-mail: portagecreekantiques@yahoo.com  
Portage Creek Antique Mall welcomes you with a wide variety of quality antiques & collectibles at affordable prices. Military, fishing, hunting, glassware, buttons, rocks, fruit jars, furniture & much more. Check us out.  
Hrs.: Open year around - Summer 9-6, winter 10-5. Closed Sun. in the winter.  
Owners: Norm & Sherry Burton (10/09)

## ZONE 2

**COLES ANTIQUES VILLA**  
120 N. Main St., Scottville, MI 49454  
Ph. (231) 936-1123  
Website: colesantiquesvilla.com  
Since 1987 - 1800 sq. ft., 11 quality dealers. A full array of merchandise tastefully displayed for your browsing pleasure.  
Hrs.: Wed. - Sat. 10AM-5PM; Sun. 11AM-3PM through April; Daily in Summer  
Owner: Sally Cole

**PRATT'S PORT CITY ANTIQUES**  
351 River Street, Manistee, MI 49660  
Ph. (231) 723-4150  
7500 sq. ft. of wonderful antiques and collectibles. Something for all to enjoy. Furniture, glassware, jewelry & more.  
Summer Hrs.: May-Oct. M-S 11-6, Sun. 12-4; Winter Hrs.: Nov.-April T-S 11-5.  
Owner: Ruth Pratt (10/09)

**SLEEPING BEAR ANTIQUES**  
c/o Ellen E. Figura, P.O. Box 538  
11470 S. Leelanau Hwy. (M-22), Empire, MI 49630, Empire Commerce Ctr.  
Ph. (231) 326-6084, (231) 620-7223  
Cell Vintage children's books, hand embroidered linens, Haviland china & much more.  
Summer: Thurs.-Sat. 11-3 Appts. welcome  
Owner: Ellen E. Figura (7/16)

## ZONE 3

**PACE AND HONG**  
Stop in for Antique and Estate Sale Shopping weekdays from 10:30-5:30. We have a wide variety of furniture, glassware, rugs, jewelry, toys, clocks, artwork, all types of collectibles and much more. 612 S. Ripley Blvd. (corner of Grant), Alpena. 989-727-0011. Ext. 5. Website has pictures and additional information.  
www.PaceHongAuctions.com

## ZONE 4

**ANTIQUE STOPPE**  
63941 US 131N, Constantine, MI 49042  
Ph. (269) 244-5596  
Architectural findings; furniture; lighting; primitives; advertising; smalls  
Located in an ca. 1842 barn & outbuilding. Dealers welcome.  
Hrs.: Wed.-Sat. 11:30AM to 5PM  
Owner: Nancy

**BLUE STAR ANTIQUE PAVILION SAUGATUCK DOUGLAS**  
2948 Blue Star Hwy., Douglas, MI 49406  
A destination mall of quality antiques & collectibles – Over 175 dealer booths!  
Hrs.: 10 to 6, 7 days a week.  
Ph.: (269) 857-6041 (02/09)

**BURGESS ANTIQUE CENTER**  
67 East Battle Creek Street, Galesburg, MI 49053  
Ph. (269) 484-1100  
Military items, toys, coins, jewelry, old sports equip., furniture, primitives, etc.  
Hrs.: 7 Days 10AM - 6PM Mon.-Sat., 11AM - 6PM Sun.  
www.burgessantiquecenter.com (02/14)

**DAYS OF YORE ANTIQUES**  
215 State Street, St. Joseph, MI 49085  
Ph. (269) 983-4144  
Specializing in buying and selling vintage costume jewelry in the heart of beautiful downtown St. Jopseh.  
Hrs.: Mon. - Sat. 10 - 6, Sun. 12 - 5  
Owner: Connie Yore

**EAGLE STREET MARKET**  
422 Eagle St., South Haven, MI 49090  
Antiques, vintage, collectibles.  
9500 sq. ft. downtown South Haven  
60 vendors  
269-637-4333  
Open every day 11-6; Summer 11-8

**GALESBURG - Burgess Antique Center**, 67 E. Battle Creek St., 49053.  
269-484-1100.  
www.burgessantique-center.com  
Mon-Sat 10-6; Sun 11-6 (04/13)

**LAKE SHORE ANTIQUES**  
10300 US 31, West Olive, MI 49460  
Shop the finest quality antiques & collectibles. 80 dealers.  
Hrs.: Mon.-Sat. 10AM - 6PM, Sun. Noon - 5 PM  
Ph: 616-847-2429 (09/07)

**MICHIANA ANTIQUE MALL**  
2423 S. 11th Street, Niles, MI 49120  
Ph.: (269) 684-7001  
e-mail: michianaantiquemall@compuserve.com  
Web: www.michianaantiquemall.com  
27,000 sq. ft. of antiques & collectibles for the beginning to advanced collector.  
Hrs.: 7 days a week, 10AM-6PM. (02/09)

**MUSKEGON ANTIQUE MALL**  
5905 Grand Haven Rd., Norton Shores, MI 49441  
Ph.: (231) 798-6441  
West Lakeshore's best antique shopping! Specializing in antiques, collectibles, jewelry, home decor. & more!  
Open every day!  
Hrs.: Mon. - Sat. 11AM-6PM; Sun. 1-6PM  
Owner: Bonnie Garrison (4/12)

**VICKSBURG ANTIQUE MALL**  
109 South Main Street, Vicksburg, MI  
Ph.: (269) 350-9562  
Multi dealer mall with great variety of antiques, collectibles and treasures. Dealers and pickers welcome.  
Open Mon.-Fri. 10-6, Sat. 10-5 (8/12)

## ZONE 5

**ALLEN ANTIQUE MALLS**  
9011 W. Chicago, Allen, MI 49227  
Ph.: (517) 869-2788  
Michigan's largest. 427 dealers representing six states.  
Hrs.: 7 days a week, 10AM - 5PM.

**BLACK MOON ANTIQUES**  
1711 E. Wilson Rd., Ashley, MI 48806  
(517) 331-1020  
Unique collection of antiques and collectibles. Inventory changing often.  
Open April through Dec.  
Hrs.: Thurs. - Mon. 11:30-6; Closed Tues. - Wed.  
Owner: Tami Bellingar (09/14)

**BLACK SWAN ANTIQUES**  
Corner of Rt. 49 & 120, 4 mi. South of Camden, MI  
Ph. (517) 368-5707  
Hrs.: 9AM - 5 PM  
We buy & sell.  
Flea markets weekly thru Oct.

**BONANZA ANTIQUES**  
1018 4th Ave. (Main St.), Lake Odessa, MI 48849  
Ph. (616) 374-8705  
2 floors, 70 booths of treasures, gas & oil, primitives, signs, tools, kitchen & mid-century.  
Hrs.: Wed. 10AM - 6PM, Fri., Sat. & Sun. 10AM - 5PM (9/15)

**JACKSON ANTIQUE MALL INC.**  
201 N. Jackson St., Jackson, MI 49201  
Ph.: (517) 784-3333  
Celebrating 30 years, 50 plus dealers in a multi level Civil War era building. From diamonds to costume jewelry, primitives, painted furnishings, RETRO & VINTAGE clothing, Kitschy & modern collectibles plus surprises. Dealers space available.  
Hrs.: Mon. - Sat. 10AM - 5:45PM; Sun. 12PM - 4:45PM  
www.TimothyBos.com (09/14)

**JAN DOUGLAS**  
30205 E. Fawn River Rd., Sturgis, MI 49091 - N of Toll Rd. 80-90 Howe-Lagrange Exit (1½ mi. S of E US 12 in MI).  
Ph.: (269) 651-7471  
Antiques: Country furniture & access. Folk art & select collectibles.  
Hrs.: Most days 10-5 by chnc/appt. (04/09)

**LAKE ODESSA ANTIQUE MALL**  
1014 4th Ave. (Main Street), Lake Odessa, MI 48849  
Ph. (616) 374-3089  
120 booths with 80 - 100 different dealers offer a wide variety of antique & collectible merchandise.  
Hrs.: Wed., 10 AM - 8PM; Sat. & Sun., 10AM - 5PM

**MAIN STREET ANTIQUE MALL**  
155 S. Main St., Leslie, MI 49251  
Ph.: (517) 589-9820  
US-127, Leslie Exit, 1/2 mile east to Main St. Furniture; Depression & other glassware; collectibles; coins & gifts.  
Hrs.: Tues. - Thur. 10AM to 6PM; Fri. 10AM to 7PM; Sat. 10AM to 5PM; Sun. 12PM to 4PM.

**MAPLE STREET MALL**  
108 W. Maple St., Mason, MI 48854  
A unique mix of antiques, collectibles, jewelry and handcrafted items in historic downtown Mason.  
Hours: M-W, Fri. 10-6, Thurs. 10-8, Sat. 10-5, Sun. 12-5 (01/09)

**MASON ANTIQUES DISTRICT**  
202-208 Mason St., Mason, MI 48854  
Ph.: (517) 676-1270; (517) 676-9753  
45 dealers, 10 buildings of furniture; glass; pottery; primitives; jewelry; dolls; vintage clothing. Dealers welcome.  
Hrs.: Open 7 days, 10AM - 6PM

**MEGA MALL ANTIQUES & COLLECTIBLES**  
15487 Old US-27 (2 mi. south of I-69) Lansing, MI 48906  
Ph.: (517) 487-3275  
Mid-Michigan's largest with over 300 booths in one 40,000 sq. ft. bldg. The best pricing on the widest selection of merchandise. Something for everyone!  
Hours: 7 days 11-6  
www.themegamall.net

**SWAN CREEK CANDLE & ANTIQUES**  
102 S. Main St., Perry, MI 48872  
Candles and home decor galore, with antiques and collectibles on the upper floor. Multi dealer.  
Hrs.: Mon. - Sat. 10AM-8PM; Sun. 12PM-6PM (7/10)

## ZONE 6

**2ND CHANCE WOOD CO. LLC**  
503 So. Shiawassee St., Corunna, MI 48817  
20,000 sq. ft. incl reclaimed barn wood & beams, custom furniture, antiques & collectibles by Morris' Memories & More (Joe Morris 989-277-3256).  
Hrs.: Mon. - Fri. 9-6, Sat. 9-4  
Owner: Tadd Morris (989) 277-6036 (5/13)

**AMERICAN HERITAGE ANTIQUE MALL**  
I-75 & Exit 9, Lesalle, MI 48145  
Ph.: (734) 242-3430  
General line of antiques. 100s of fruit jars & bottles; furniture; kitchen cupboards; photos; jewelry. 14,000 sq. ft.  
Hrs.: Daily, 10AM - 6PM.

**ANTIQUE MALL OF ST. CLAIR**  
201 North Riverside, St. Clair 48079  
Ph.: (810) 329-3173  
45+ quality dealers.  
Hrs.: Mon.-Sat. 10AM-5PM; Sun. Noon-4PM  
www.antiquemallofstclair.com (11/09)

**AROUND THE FARM ANTIQUE MALL**  
12025 S. Gera Rd., Birch Run, MI 48415  
50 vendors - primitives, furniture, crocks, Wades, license plates, stoplights, outdoor rusty garden area & more!  
Hrs.: Daily 10AM-5PM  
Owners: Charles & Tracie St. James (10/17)

**AUCTION TODAY-CONSIGNMENT SERVICE**  
66605 S. Forest Ave., Lenox, MI 48050  
3,600 sq. ft. of furniture, tools, collectibles, antiques, memorabilia, etc.  
U-Haul rentals & sign vendor in house.  
Hrs.: Mon.-Fri. 10AM-3PM; Every other Sat. 10AM-3PM (12/14)

**BATTLE ALLEY ARCADE ANTIQUES MALL**  
108 Battle Alley, Holly, MI 48442  
Ph.: (248) 634-8800  
25 dealers of quality antiques & collectibles located in a unique 19th century setting.  
Hrs.: Mon.-Sat. 10:30-5:30; Sun. 12PM-5PM  
E-mail: arcadeantiques@sbcglobal.net (02/09)

**CHELSEA ANTIQUES MALL**  
1178 S. Main (M-52), Exit 159 off I-94 North ½ mi., Chelsea, MI 48118  
New mall filled with 41 vendor booths of quality antiques/collectibles.  
Ph.: (734) 562-2190 or chelseaantiquemall.com  
Hrs.: Closed Monday, Tues.-Sat. 10AM - 6PM, Sun. 11AM - 5PM  
Owners: LOCALLY owned by Kathy & Ed GreenLeaf (3/13)

**COUNTRYSIDE CRAFT AND ANTIQUE MALL**  
40700 Van Dyke (at 18 Mile Rd.) Sterling Heights, MI 48313  
586-977-1633 www.csmalls.com  
Past and Present Treasures. 16,000sf. of quality antiques, vintage collectibles, jewelry, glassware, shabby chic and so much more.  
We are open 7 days a week!  
Mon-Thurs 10-7, Fri-Sat 10-8, Sun 11-6

**DIXIELAND MARKET PLACE**  
Dealer info Joe, (248) 338-3220  
100,000 sq. ft. inside – Over 100 vendors outside. You'll never know what you'll find. Treasure Hunters Dream! 5 restaurants. New & used: Collectibles, antiques, western, glass, jewelry, cookie jars, etc. 35 years same location.

**EVERYTHING CLASSIC ANTIQUES**  
315 Huron Ave., Port Huron, MI 48060  
Ph. (810) 989-5256  
Antiques, collectibles, crafts, soap & candles, all displayed on 3 floors of a beautiful historic building in downtown Port Huron.  
Hrs.: Mon. - Sat. 10AM - 6PM; Sun. 12PM - 5PM

**HOLLY WATER TOWER ANTIQUES MALL**  
310 S. Broad St., Holly, MI 48442  
Ph.: (248) 634-3500  
10,000 sq. ft. of Early American furniture & decorative arts spanning over 3 centuries. Where discriminating designers, decorators & dealers shop.  
Hrs.: Mon. - Sat., 11AM - 6:30PM; Sun., Noon - 5:30PM; closed Mon.  
Owners: Bill & Brenda Stanley

**JIM'S ANTIQUES**  
8600 State St., Millington, MI 48746  
Crocks, glassware, primitives, books & many, many smalls; not a destination but worth the stop.  
Hrs.: Mon.-Sat., 10AM-5PM; Sun., Noon to 4PM

**LIVINGSTON ANTIQUE OUTLET**  
1825 Burkhardt Rd., Howell, MI 48855  
Ph.: (517) 548-5399  
32,000 sq. ft. of quality antiques at affordable prices. We have the best dealers! Mission, furniture, collectibles, and so much more. Hours: Mon.-Sat., 10AM to 6PM; Sun., Noon to 5PM.  
Owners: Jeff & Lori Wengle (09/09)

**MARINE CITY ANTQ. WAREHOUSE**  
105 Fairbanks Ave. (M-29) Marine City, MI 48039  
Ph.: (810) 765-1119  
Hrs.: Mon. - Sat. 10AM-5 PM; closed Sun.  
www.bestantiquemall.com  
3 floors of quality antique dealers. Area's largest selection of furn., prim. to Vict. to retro.  
Owner: John DeMuch (02/09)

**MEMORIES ANTIQUE MALL & GARDEN CENTER**  
4036 W. Grand Blanc Rd., Swartz Creek, MI 48473. US 23 Exit 88 - 1 mi. West.  
Ph.: (810) 655-8306  
www.memoriesantiquemall.net  
Multi-dealer, wide variety, great prices. Antiques, furniture, collectibles, cottage, primitives, shabby chic  
Hrs.: Closed Mon., Tues-Sat. 11AM - 6 PM, Sun. 12-5 PM (10/07)

**MOTOR CITY ANTIQUE GALLERY**  
13431 Telegraph Rd., Flat Rock, MI 48134  
Ph. (734) 782-4018  
Web: motorcityantiques.com  
17,000 sq. ft. w/over 100 dealers & a variety of antiques. Dealer space avail.  
Hrs.: Tues. - Sat., 10AM - 6PM; Sun., Noon - 6PM.

**NORTHERN ATTIC ANTIQUES**  
Main Street, Port Hope, MI 48468  
Ph. (989) 428-3030  
Great antiques, toys, fishing, collectibles & more. Stop by & say hi!  
Hrs.: Weekends 10 AM - 5 PM  
Owner: Doug Lashbrook (10/08)

**ON THE HUNT**  
2592 Dixie Hwy., Waterford, MI 48327  
Ph. (248) 742-1142  
Unusual antiques & collectibles, clocks, glassware, advertising items, memorabilia of all kinds, dolls, comic books, radios, picture framing is available  
Hrs.: Open 7 Days A Week 11 AM-6 PM  
Owner: Ron Hunt (03/13)

**SALT CITY ANTIQUES**  
115 W. Michigan Ave. (US 12), Ypsilanti, MI 48197  
Ph. (734) 487-1259  
4200 sq. ft. of quality antiques. Lg. select. of Mid Cent. furn. Affordable prices & a great place to shop.  
Hrs.: Sun. 12-5, Mon., Thurs., Fri., Sat. 10-5; Closed Tues. & Wed. (02/18)

**SILVER QUILL ANTIQUES & GIFTS**  
22813 Van Dyke Ave., Warren, MI 48089  
Ph. (586) 756-8180  
Cut glass, pressed glass, elegant glass, contemporary art glass, pottery, porcelain, figurines, jewelry, postcards & thousands of small treasures. Single proprietor since 1971.  
Hrs.: Mon., Tues., Fri. & Sat. 12-6; Sun. 1-6; Closed Wed. & Thurs.  
www.silverquillantiques.com (06/18)

**STARTIN' ANTIQUES INCORPORATED**  
5043 Warner Rd., Fowlerville, MI 48836  
Ph.: (517) 223-0500  
10,000+ square foot facility, premium booth space available. Indoor and outdoor auctions, auction facility for rent. 1 mile West of Burkhardt Road, 1 mile from Livingston Antique Outlet.  
Hrs.: Tues.-Sat. 10AM - 6PM, Sun. 11AM - 5PM  
Owner: Kevin Steiner (9/09)

**TAYLORTOWN TRADE CENTER, ANTIQUE MALL**  
22525 Ecorse Rd., Taylor MI 48180  
Antique Mall, Convention Hall  
Hrs.: Thurs. & Sun. 10-6, Fri. & Sat. 10-8

**TOWN HALL ANTIQUES**  
205 N. Main St., Romeo, MI 48065  
Ph.: (586) 752-5422  
3 floors, 10,000 sq. ft., 45+ dealers. Featuring quality furniture, glass, primitives, jewelry, industrial and art.  
Open 7 days 10AM - 6PM

**VILLAGE ANTIQUES**  
22630 Michigan, Dearborn, MI 48124  
Ph.: (313) 563-1230  
Multi dealer mall. something for everyone from primitives to jewelry to furniture to advertising, etc.  
Hrs.: 7 days, 10:30AM - 5:30PM; Thurs. until 7:30PM  
Owner: Shirley Molinari

## ZONE 7

**MAIN STREET MALL**  
127 N. Main St., Monticello, IN 47960  
Ph.: (574) 583-2998  
General line antiques mall.  
Hrs.: Mon. - Sat. 10AM to 4PM; Sun. 12PM to 4PM.

**OLD FARM HOUSE ANTIQUES**  
409 S. Main St., Hebron, IN  
Ph.: (219) 996-5329  
Distinctive furn., clocks & collectibles.  
Hrs.: Mon., Thurs., Fri., Sat., 10 AM - 3PM; Sun. 12PM - 3PM; Closed Tues. & Wed

**OLD HOUSE ANTIQUES**  
6156 N. Fail Rd., LaPorte, IN 46350  
(219) 778-2245  
Old House Antiques opens wide to a country place filled with kitchenware, furniture, textiles & many other items ready for a new home.  
Hrs.: By chance or appt.

**PLAIN & FANCY ANTIQUES**  
5395 W. Johnson Rd., LaPorte, IN 46350  
Ph.: (219) 362-5277  
E-mail: bisensow@hotmail.com  
Web: olddodads.com  
This 1890s farm setting features horse-drawn sleighs; primitives; furniture; linens & glass.  
Hrs.: Generally Mon. - Sat., 9AM to 5PM; Sun., 12PM to 5PM.  
Owners: Bob & Lorie Sensow

**THE ANTIQUE MARKET**  
I-94 & US-421, Frontage Rd., Michigan City, IN 46360  
Ph.: (219) 879-4084  
Over 140 deals with only fine antiques and collectibles.  
Hrs.: Mon. - Sat., 10AM - 5PM; Sun., 12PM - 5PM  
Owners: John & Joann Small





**UNIQUE ANTIQUE MALL**  
50981 US-933 N, South Bend, IN 46533  
(574) 271-1799  
Antiques & Collectibles, Pottery, Furniture, Books, Glassware  
**Look for the big rocker** (04/09)  
**ZONE 8**  
**A WILD HARE ANTIQUE MALL**  
401 W Maumee (US-20), Angola, IN 46703  
(260) 665 9920  
Focus on 1970 and older - Depression / elegant glass. Multi-dealer mall.  
Closed Mon.-; Tue.-Sat. 10-5; Sun. 12-5. (09/07)

**ANTIQUES & COLLECTIBLES MALL**  
2626 Peddler's Village Rd., Goshen, IN 46527  
Ph.: (574) 534-5853  
Multi-dealer mall with a little bit of everything!  
Mon.-Thur. 10-5; Fri. 10-8; Sat. 9-8.  
**ANTIQUES ON 5TH**  
109 East 5th St., Auburn, IN 46706  
Something for everyone. We have all kinds of antiques & collectibles. Multi-dealer mall.  
Hrs.: Mon.-Sat. 10-5; Sun. 12-5.  
Owner: Todd Ely

**BARN STABLE ANTIQUES**  
330 E. St. Rd. 120, Fremont, IN 46737  
Ph.: (260) 495-2276  
Painted period and primitive furniture, featured in *Redbook*, *Midwest Living* & *Country Home*.  
Hrs.: Tues. - Sun., 10 to 5.  
Owner: Pat Helton

**CAROLYN'S ECLECTICS**  
Speedway Flea Mkt., Ft. Wayne, IN 46805  
2 blocks No. Coliseum on Speedway Drive (near Glenbrook), Speedway.  
Ph.: (260) 413-7908  
Flea mkt. inside; Antiques, collectibles, jewelry, books. 25% discount.  
Hrs.: Fri., Sat., Sun. 10-6

**HOMESTEAD ANTIQUE CENTER**  
255 N. Hetzler Ct., Angola IN 46703  
New shop - new owners! Quality antiques, unique primitives, early advertising, and other needful stuff!  
Tues. - Sun. 10-5

**MEMORY LANE**  
316 W. Van Buren, Columbia City, IN 46725  
Ph.: (260) 244-5446  
Antiques & rustic gifts; primitives; tinware; candles; Chai tea.  
Hrs.: Fri., 9AM to 6PM; Sat., 9AM to 5PM or by appointment.

**ROUTE 20 ANTIQUES & MINI MALL**  
0275 W. US 20, LaGrange, IN 46761  
Antiques, collectibles, primitives & a Mini-Mall of over 16 booths. A variety for everyone!  
Hrs.: Mon. - Fri. 10AM - 5PM, Sat. 10AM - 3PM, Closed Sundays

**STACY'S VICTORIAN CHILD**  
136 N. Second St., Decatur, IN 46733  
Ph.: (260) 728-2377  
Country, Victorian furniture; General Store, black memorabilia; rare, unusual, hard-to-find antiques, children's clothing, toys.  
Hrs.: Mon. - Sat. 10AM to 5PM; Open most Sundays.

**TALMA ANTIQUES**  
7136 N. S.R. 25, Rochester, IN 46975  
Ph.: (574) 223-6905  
E-mail: jadyhouse@rtcol.com  
Oak, primitive furniture, advertising items & unusual items.  
Hrs.: Mon. & Tues., 12PM-5PM or by appt.  
Owner: Jay Stackhouse

**THEN & NOW ANTIQUES, INC.**  
Downtown Angola's Largest Antique Mall, 200 W. Maumee, Angola, IN 46703  
Ph.: (260) 665-6650  
Over 60 dealers on three levels, something for all tastes & special interests. Buses welcome, parking behind store.  
Hrs.: Mon.-Sat. 10-5; Sun. Noon - 5.  
Owner: Melody Willibey (09/09)

**ZONE 9**  
**DELPHI ANTIQUE MALL**  
117 S. Washington St., Delphi, IN 46923  
Ph.: (765) 564-3990  
E-mail: gwayne@netusa1.net  
Toys; glassware; furniture; unusual items. Something for everyone. Recycling history is your future.  
Hrs.: Mon. - Sat. 10AM to 5PM; Sun. 12PM to 5PM.  
Owners: G. Wayne & Marilyn Berkshire

**THE FIRESIDE ANTIQUE MALL**  
Exit 39 off I-74, 4035 State Road 32E Crawfordsville, IN 47933  
Ph.: (765) 362-8711  
E-Mail: nwaldon@sbcglobal.net  
43 booths, over 4,000 sq. ft., three large rooms, lots of parking. Furniture, glassware, pottery, books, reference books, toys, jewelry.  
Hrs.: Mon.-Sat. 10-5; Sun. 1-5.  
Owner: Norma Waldon

**THE ORIGINAL TREASURE MART**  
1201 E. Vaile Ave., Kokomo, IN 46901  
Ph.: (765) 459-3148  
Great selection of antiques; collectibles; new & used furniture; consignments; access.; glassware & much more.  
Hrs.: Mon. - Sat., 10AM to 8PM; Sun., 12PM to 5PM.  
Owner: Jeff Augustine

**TIMES PAST ANTIQUES**  
124 E. Main, Delphi, IN 46923  
Ph.: (765) 564-6317  
General line, furniture, glassware, in our 1880s-era building.  
Hrs.: Mon.-Sat. 10-5; Sun. 1-5.  
Owner: Tony Rakowsk

**WILD OSTRICH ANTIQUES**  
928 S. Main St., Kokomo, IN 46901  
Ph.: (765) 452-3990  
Unusual antiques & collectibles; Bakelite; Dirilyte; sporting items; advertising; motorcycle; toys; bottles; pottery; china; silver; Carnival.  
Hr.s: Thur. - Sat., 10AM to 5PM.

**ZONE 10**  
**ANTIQUES ON THE SQUARE**  
1056 Virginia Ave., Indianapolis, IN 46203  
Ph.: (317) 916-8125  
Web: www.antiques-squared.com  
E-mail: jinx@antiques-squared.com  
Mid-century; modern; vintage clothing; kitchenware; mantels; records & books.  
Hrs.: Mon. - Sat., 10AM to 5PM; Sun., 12PM to 5PM.

**BERNE ANTIQUE MALL**  
105 W. Water St., Berne, IN 46711  
Ph.: (260) 589-8050  
Furniture, glassware, fishing lures, jewelry, primitives, limited edition dolls & bears which include Lee Middleton, Steiff, Boyds.  
Hrs.: Mon.-Sat., 10AM to 5PM; Sun., 1PM to 5PM.

**INDIANAPOLIS DOWNTOWN ANTIQUE MALL**  
1044 Virginia Ave., Indianapolis, IN 46203  
Ph.: (317) 635-5336  
Located in historic Fountain Square, 40 shops, 2 floors. Truly an antq. shop!

**JAY GARMENT ANTIQUE MALL**  
500 S. Meridian (US-27), Portland, IN 47371  
66,000 sq. ft. facility, restaurant, collectibles, antiques.  
Hrs.: 7 days, 9:30AM - 6PM  
Owner: Steve Pennzsa

**MAIN STREET ANTIQUES UNIQUE**  
96 E. Main, Hagerstown, IN 47346  
Ph.: (765) 489-5792  
General line since 1976.  
Hrs.: Thurs. - Sat., 1PM to 8:30PM; Sun., 12PM to 8:30PM.  
Owners: Jim & Becky Reed

**NOBLESVILLE ANTIQUE MALL**  
20 N. Ninth St., Noblesville, IN 46060  
Ph.: (317) 773-5095  
E-mail: noatm@realtiques.com  
65 dealers, 10,000 sq. ft. in historic building on Courthouse Square. Furniture; glassware; china; books; toys; pottery; jewelry; quilts & rough room.  
Hrs.: Mon.-Fri. 10AM - 6PM; Sat. 10AM - 5PM; Sun. Noon-5

**SOUTHPORT ANTIQUE MALL**  
2028 E. Southport Rd., Indianapolis, IN 46227  
(317) 786-8246 • antique@iquest.net  
36,000 sq. ft. of fun, antiques, collectibles. Our staff is customer service oriented.  
Hrs.: Mon.-Sat. 10AM-8PM; Sun. Noon-5PM.

**UNION CITY ANTIQUE MALL**  
201 N. Columbia St., Union City, IN 47390  
Ph.: (765) 964-3203  
Located in an historic building in downtown Union City. 43 dealers w/diverse specialties.  
Hrs.: Open 7 days a week.  
Owner: Preservation Society of Union City, IN/OH.

**WESTFIELD ANTIQUE MALL**  
800 E. Main St., Westfield, IN 46074  
(317) 867-3327  
17,000 sq. ft., 75 dealers, general line of antiques & collectibles. 1-1/2 miles east of Hwy. 31.  
Hrs.: Mon.-Fri. 10AM-6PM; Sat. 10AM-5PM: Sun. Noon-5PM.

**ZONE 11**  
**SHELBYVILLE ANTIQUE MALL**  
117 S. Harrison St., Shelbyville, IN 46176  
Ph.: (317) 392-5784  
40 dealers with antique treasures and fine collectibles, brass cash registers, black memorabilia, Wedgewood and Greentown.  
Hrs.: Tue.-Sat. 9-6; Sun. 10-5  
Owners: K.C. Cox & Bill Bryan

**ZONE 12**  
**ANCESTOR HOUSE ANTIQUES & COLLECTIBLES**  
3148 Tremainsville Rd., Toledo, OH 43613  
(419) 474-0735  
Music boxes, fine glass & porcelain, Lotton art glass, clocks, silver plating, furniture, collectible watches & jewelry. Appraising over 35 years.  
Tue.-Fri. Noon-5PM; Sat. Noon-4PM  
Owners: Teo & Sheila Powers

**ANTIQUE BARN**  
1598 Sylvania, Toledo, OH 43612  
(419) 470-0118  
Multi-dealer mall. Antiques, collectibles, furiture & memorabilia of all kinds. Check us out!  
Hrs.: Mon., Tues. & Sat. 10AM-5PM; Wed. & Fri. 10AM-6PM.

**BENKIN ANTIQUE GALLERY**  
14 E. Main St., Tipp City, OH 45371  
Ph.: 937-890-3614  
10,000 sq. ft. in historic Tipp City in 1890 3-story building. A real antique store. I-75, Exit 68  
Hrs.: Mon. - Fri., 10AM to 5PM; Sun., 1PM to 5PM.  
Owners: Ben & Evelyn Staub

**CAMPBELL HOUSE ANTIQUES**  
95 S. Main St. (Rt. 58), Oberlin, OH Ph.: (440) 774-9172  
7,000 sq. ft. – multi-dealer.  
19th C. furniture, primitives, white iron-stone, jewelry, Orientalia, nautical, toys, yellowware, vintage, stone castings.  
Open 7 days 11AM - 5PM. (0640)

**DELAWARE COUNTY FAIR**  
236 Pennsylvania Ave., Delaware, OH 43015  
740-362-3851  
www.delawarecountyfair.com  
Year-round event center.  
Hrs.: Mon.-Fri. 8AM-5PM

**DOWNTOWN ANTIQUES & LIGHTING**  
231 S. Main St., Findlay, OH 45840  
Ph.: (419) 422-4538  
Web: www.findlaydowntown.com  
Lamp & fixture repair; lamp shades - glass, silks, hard-backs; antq. lamps; fixture restoration or reproduction; new & old lamp parts; lightbulbs; furniture; lg. selection of sm. collectibles.  
Hrs.: Mon. - Fri., 11:30AM - 5:30PM; Sat., 10AM - 3PM; other hrs. by appt.  
Owner: Jim Knott, aka The Lamp Doctor

**HH ANTIQUES & COLLECTIBLES**  
14 N. Holland Sylvania Rd. (Corner Hill Ave.), Toledo, OH 43615  
Ph.: (419) 867-1676  
Web: www.hhantiquemail.com  
Multi-dealer mall, 9 charming rooms filled with antiques, collectibles & gifts.  
Hrs.: Mon. - Fri., 12PM to 5PM; Sat., 10AM to 5PM; Closed Sun.

**HONEYCREEK GALLERIES**  
131 S. Main St., New Carlisle, OH 45344  
Ph.: (937) 845-3443. E-mail: honey-creekantq@juno.com  
Quality maple, oak, walnut & pine furniture; framed art; mirrors; lamps; kitchen collectibles & primitives. Lg. selec. of quality costume jewelry & hats; fishing gear; yard decor; tools; sewing access.; cookbooks; novels; Fenton art glass dealer.  
Hrs.: 5 days - Wed. - Fri. 11AM to 5PM; Sat. 12PM to PM; Sun. 12PM to 4PM.  
Owners: Linda & David Campbell

**OLD WEST END COLLECTOR'S CORNER**  
3309 LaGrange St., Toledo, OH 43608  
Ph: (419) 244-0004  
E-mail: dan@owecc.biz  
Multi Dealer Resale Store & Auct. Hse.  
Hrs.: Mon.-Fri. 12-6; Closed holidays.  
Owners: Dan Plasterer & Anthony Bodle

**POTTERY CITY ANTIQUE MALL**  
409 Washington St., East Liverpool, OH 43920  
(330) 385-6933  
200 dealer mall of 40,000 sq. ft. in the heart of the Pottery Center.  
Daily 10AM-6PM; Sun. Noon-6PM.  
Owner: Jim Russell

**SCHMUCKER'S ANTIQUES**  
304 E. Baubice St., Pioneer, OH 43554  
Ph.: 419-737-2280 or 419-737-2650  
Buy-Sell-or Trade!  
Open Thurs.-Sat. 11-5 or call for appt. (7/17)

**SUZANNE'S ANTIQUES**  
90 Dodge St., Box 67, Swanton, OH 43558, 419-825-1000  
E-mail: tiq420@aol.com  
Buying & selling antq.s. & collectibles prior to '70s. Also - we do estate sales.  
April-Oct. 6 days; closed Nov.-March.  
Owner: Suzanne Lauch

**THE GLEANER**  
1488 Co. Rd. 995, Ashland, OH 44805  
Ph.: 419-281-2849  
E-mail: gleaner@bright.net  
4500 sq. ft. shop featuring "paint" primitives & furniture w/folk art acces.  
Hrs.: Mon.- Sat., 10AM to 5PM; Sun., 1PM to 5PM.  
Owner: Margie Krieg

**THE WAY WE WERE ANTIQUES**  
147 S. Main St., Marion, OH 43302  
(740) 383-5514  
Art glass, dolls, toys, jewelry, pottery, Majolica, quilts, adv. Large shop full. Senior discount honored.  
Hrs.: Mon., Tue. & Thur. 11AM to 4:30PM; Fri. 2PM to 4:30PM.  
Owner: Loa Gianero

**VALLEY VIEW ANTIQUE MALL**  
7281 Warren Sharon Rd., Brookfield, OH 44403  
Ph.: (800) 587-2535  
E-mail: valley@nlcomm.com  
Web: valleyviewinc.com  
78,000 sq. ft.; 300+ dealers from 4 states & England selling antiques & collectibles.  
Hrs.: Sun.-Thurs., 10AM to 6PM; Fri. & Sat., 10AM to 8PM.

**ZONE PA**  
**ANTIQUE AND FLEA MARKET OF WEST MIDDLESEX**  
On Rte. 18 in West Middlesex PA.  
2 big buildings (Old Mentzers)  
Hrs.: Wed., Thurs., Sat. & Sun. 9AM-5PM **Dealers Wanted!**  
724-528-2490 (12/07)

**ZONE CANADA**  
**SOUTHWORKS ANTIQUES**  
64 Grand Ave. S., Cambridge, Ontario N25 4J7  
519-740-0110  
info@southworksantiques.com  
www.southworksantiques.com  
30,000 sq. ft. of antiques & collectibles. Cafe on site. We deliver anywhere!  
Hrs.: Mon. & Wed. 9:30-6; Thur. & Fri. 9:30-9; Sat. 9-6; Sun. 10-6  
Owner: Laura Harding ☐

ADVERTISERS!  
Verify that your ad was received!  
Whether you faxed or e-mailed,  
call toll-free for verification:  
888-339-3795

BE A PART OF THE MONTHLY ANTIQUE SHOP & MALL GUIDE

Business Name

Address

Town

State

Zip

15 word description of your store or facility

Days/Hours:

Owner, (optional)

We Reserve the Right to Edit Copy Over 35 Words.

ADS MUST BE PREPAID!

3 Months \$45; 6 Months \$80; 14 Months \$144

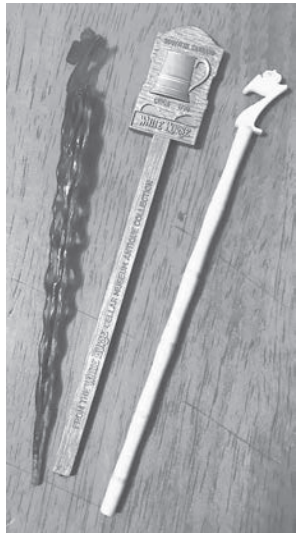
We Reserve the Right to Edit Copy Over 35 Words.



# Swizzle Stick

FROM PAGE 1

“Switchel,” common across the Caribbean, made with molasses and water. Then came a popular cocktail known as a rum swizzle made with Bermuda rum, water, and various flavorings, then “swizzled” into a chilled and frothy libation. Many of today’s bartenders are familiar with the category of cocktails



known as swizzles, like the Queen’s Park, that involve the use of the stick and method described. By the 19th-century, the tool had developed some unflattering connotations. In Victorian England, another stick, typically made of glass, was employed by the Queen and members of English society to stir the carbonation out of Champagne, thus preventing any rather “unladylike emissions” later. The 1890s Century Dictionary described the term “swizzle” to reflect a blending of the words swill and guzzle. The definition also referenced drinking habitually and to excess. The modern chapter of the swizzle stick’s story starts in 1934. Boston inventor Jay Sindler, find-

**Left:** A popular category for swizzle collectors is those for liquor brands and bars, particularly those lost to time. (Photo: William Flood)

ing himself unable to fish the olives out of his martini without using his fingers, concocted the idea of a wooden spear, with a small paddle at the upper end that could be printed with an establishment’s name. He called it a swizzle stick even though it was intended for spearing garnishes rather than swizzling a drink. He formed a company called Spir-it. One of the first promotional uses of Sindler’s wooden swizzle sticks was for Eldorado Rum. As Prohibition had just ended, other brands and drinking establishments quickly followed suit. They were all thirsty to get their names and locations in front of the public. Wood, glass, and even Bakelite sticks were quickly crafted to fill the demand.

After World War II, the advancement of plastic injection molding allowed swizzle makers to offer increasingly creative options. The most basic sticks featured simple printing, like business names on the handles or logos on the paddle at the top. Yet, many employed clever imagery like the swordfish and lobsters employed on swizzles at seafood restaurants, airplanes and globes on sticks from airlines, and even the Playboy bunny atop the swizzles used in the clubs. Establishments were constantly trying to outdo each other with creative pieces. By the 1950s and 60s — the halcyon decades for their use — the humble swizzle stick had turned into a powerful tool for visual marketing. Businesses encouraged patrons to take swizzles home as mementos, knowing that it would help reinforce the brand. In that sense, swizzles served a role very similar to branded matchbooks that were also employed as advertising. By the 1970s, the need for custom swizzle sticks

**Left:** Original swizzles were often made of tree branches and used to froth drinks. (Image: Angostura Bitters, Ltd., 1937)

began to wane, as wine and beer started to overtake harder spirits as the libation of choice. As people became more health-conscious in the 1980s, most imbibing was discouraged, and bar margins got thin. Like matchbooks, bar and restaurant operators realized they could easily cut the frill of fancy swizzle sticks from their budgets.

Interest in cocktails started reblooming in the late 1990s, thanks to shows like “Sex and the City” and its penchant for the Cosmo. Classic cocktail culture was solidly replanted in the early 2000s when “Mad Men” took viewers back to the era when the cocktail hour was commonplace. A craft cocktail scene soon began spreading across the country, with craft bars bringing back swizzle sticks as promotional tools.

The affair with craft cocktails spawned a home bar resurgence, often connected to the parallel retro revival. Today, amateur mixologists don cocktails with vintage swizzle sticks, attempting to connect with another place and time. When not using vintage pieces, home barkeeps will drop in an imaginative modern one, indirectly reinforcing today’s brands the same way it happened sixty years ago.

That is good news for companies like Spirit Foodservice — Jay Sindler’s original Spir-it in its modern incarnation — which is the largest producer of stir sticks in the world. According to Joe Pierro, vice president of sales and marketing, “Today we produce several billion a year.” Its main rival, Indiana-based Royer

Corporation produces pieces for noteworthy entities including the Greenbriar Resort and the Hotel Monteleone in New Orleans. Whether vintage or modern, plentiful supply means collecting swizzle sticks is more about enjoyment than value. While some rare pieces from long-gone establishments have sold for two and occasionally three figures, it is very common to find jars filled with dozens selling for under \$10. Most swizzle stick collectors have a preferred category such as those from airlines, theme parks, or tiki bars. So, there is a certain thrill of the hunt, trying to locate pieces to add to a collection. Many will buy bags or jars of swizzle sticks just to cher-

ry-pick the ones they want. Condition is rarely an issue since most swizzles were used only once. If you turn into a serious junkie, there is the Swizzle Stick Collectors Club ([swizzlestickcollectors.com](http://swizzlestickcollectors.com)) founded in 2019, an offshoot of an earlier group the International Swizzle Stick Collectors Association, founded three decades earlier. In an era when many modern watering holes use little red coffee stirrers in cocktails, it’s good to know there was — and still is — something more artistic to embellish a drink. The treasure-trove of vintage swizzles and the imaginative modern ones are a legacy – and a cocktail’s most fashionable accessory.

**Below:** The term “swizzling” refers to vigorously rotating a mixing tool between the palms of the hands to froth a drink. (Photo: Wikimedia Commons)



**Below:** One of the beauties of collecting swizzle sticks is that they are easy to store and display. (Photo: William Flood)



## West India Swizzle

This is an old-fashioned Cocktail, simple to make and very popular in the West Indies :

Use large mixing glass.

$\frac{1}{2}$  wineglass of Gin, Whisky, Brandy or Rum (*see page 8*), as preferred.

$\frac{1}{2}$  or 4 generous dashes of Angostura Bitters.

$\frac{1}{2}$  to 1 teaspoonful of Syrup, as preferred.

Pour these into a tall mixing glass, add an equal quantity of cold water or cracked ice and, with a swizzle-stick, swizzle to a froth. Serve in a Cocktail glass or small tumbler.

If ice is used, add also a little water. In this way the foam is created more quickly and is more lasting.

If preferred, this Cocktail can be served “still,” *i.e.*, not swizzled but well stirred.

### “SWIZZLE-STICKS”

In the West Indies the Cocktail described above is mixed by the swizzle-stick method.

The swizzle-stick (illustrated alongside) is a natural product of the West Indies. It consists of the dried stem of a plant having radiating branches.

When the stem is twirled rapidly between the palms of the hands the forked branch-ends induce a perfect mixture of drinks.

An egg-whisk of the rotating type, if not used too vigorously, will serve quite well.

Rum, a home product, is a preferred drink in the West Indies. It appears prominently in “Swizzles.” There is something naturally stimulating and nourishing about this wholesome spirit made from cane sugar. Who has not heard of the heartening bounty in Winter-time of “Rum and Milk,” “Rum and Butter,” “Egg Nog” and “Long Life”? (See index for recipes—see also Rum note on page 8.)

Page 11

**Below:** Certain swizzle sticks simply stand out to collectors because of their topic and creative imagery. This beautiful TWA piece looks like a jet cutting across the sky. (Photo: Wikimedia Commons)





FLEA MARKETS • ANTIQUES  
EDUCATION • WANTED  
COLLECTIBLES • SERVICES  
ANTIQUES SHOPS • SHOWS

CLASSIFIEDS

FLEA MARKETS • ANTIQUES  
EDUCATION • WANTED  
COLLECTIBLES • SERVICES  
ANTIQUES SHOPS • SHOWS

ANTIQUES

DAVAL'S USED FURNITURE & ANTIQUES. 6 buildings with 15,000 sq ft of quality furniture, antiques and collectibles. SAVE TIME AND MONEY. SHOP DAVALS FOR THE BEST SELECTION, BEST QUALITY, BEST PRICE. YOU HAVE TO SEE IT TO BELIEVE IT. We are truly a destination place and worth the drive. WE BUY ESTATES. Layaway terms available. Visa/MasterCard/Discover accepted. 2 miles W. of Hastings at 2084 W M-43 Hwy near Bob's Gun & Tackle. Hours - Sun: 12-5; Mon-Thurs: 10-6; Fri: 10-8; Sat: 9-5. (269) 948-2463 S

PHONE NUMBER:  
888-339-3795

SERVICES

MIRROR RESILVERING: Quick Service. 313-521-1888. Frank Wright Glass, 14808 Gratiot. Detroit, MI 48205. Call for quotes. www.frankwrightglass.net S

WANTED

WANTED: Always buying rare antique motors. Outboard and inboard also early race boats. E-mail: bjoutboards@gmail.com 989-326-0727 B.J. Pawlaczyk S

Be Sure To Say,  
"I Saw It In The  
Auction Exchange &  
Collector's News!"

VENDORS

Free booth space available @ our annual antique advertising specialty show on March 19th, 2022. Located at the Indiana State Fairgrounds, Indianapolis. This is one of the largest markets for only 40+ year old advertising in the world. Signs, displays, clocks, and all other forms of vintage advertising.  
For info: IAAshow.com  
Contact: damongranger@gmail.com 5/22

www.eauctionexchange.com

NOW HIRING Penske Logistics  
\$3,000 sign-on bonus! New Associates average more than \$56,800 in year one. Immediate full-time opportunities available.  
Starting base rate is \$18.50/hr. Plus, \$1.00/hr shift Premium. Plus, \$1../hr guaranteed performance incentive. PLUS an additional \$1.00 per hour for working on the weekend = \$21.50. Interviews are being conducted via phone and following social distancing protocols. No experience required, Penske will train.  
Call to apply today! 855-443-0246 4821

Feed Your Auction  
Addiction With  
The Auction  
Exchange And  
Collector's  
News!®



Buying? Selling? Promoting?

TRY AN AUCTION EXCHANGE CLASSIFIED!

Classified ads are limited to Antique Shows & Shops, For Sale, Services, Education and Want Ads. • No auction ads or tag sales.

An Auction Exchange classified ad is only \$6.25 per week for up to 15 words and 25¢ for each additional word.

Please print legibly and include name, address or phone number & town as it will appear in print.

Name \_\_\_\_\_

Street \_\_\_\_\_ City \_\_\_\_\_

State \_\_\_\_\_ Zip \_\_\_\_\_ Phone \_\_\_\_\_

CLASSIFICATION: (i.e. Wanted , For Sale) \_\_\_\_\_ Please run my ad for \_\_\_\_\_ weeks.

YOUR AD, AS IT WILL APPEAR

_____	_____	_____	_____	_____
_____	_____	_____	_____	_____
_____	_____	_____	_____	\$6.25
_____	_____	_____	_____	\$7.50
_____	_____	_____	_____	\$8.75
_____	_____	_____	_____	\$10.00
_____	_____	_____	_____	\$11.00
_____	_____	_____	_____	\$12.25

All classified ads must be pre-paid  
Please send ad with check made payable to The Auction Exchange • PO Box 90 • Knightstown, IN 46148-0090





## Shipshewana Auction

**ANTIQUE & MISCELLANEOUS AUCTION**  
Every Wednesday, Year-Round at 9:00 am EST



1815 Painted  
Linen Press



1830's 2-Piece  
Dry Sink Hutch



1830's Painted  
Jelly Cupboard



1825 Painted  
Corner Cabinet

The items pictured above will sell in our November 10th Antique & Misc. Auction

Preview consignments at [AuctionZip.com](http://AuctionZip.com)! Auctioneer ID #1945

We have seller space available. Call (260) 768-4129 to consign items!

[www.ShipshewanaTradingPlace.com](http://www.ShipshewanaTradingPlace.com) • (260) 768-4129 • 345 S Van Buren St, Shipshewana, IN 46565

## RED CEDAR ANTIQUES

1435 Grand River Ave., Williamston, MI 48895

*Holiday Extravaganza*

**25% Off Everything**

**November 5-14**

517-655-3000 • 7 days 10am-6pm

[www.redcedarantiques.com](http://www.redcedarantiques.com)

**Quality Dealers Wanted!**

**Shop Early for the Holidays – No Waiting with Us!**

## LIVINGSTON ANTIQUE OUTLET

**is looking for  
Experienced Antique Vendors!**

Please stop by or call us at  
**517-548-5399** and ask to speak with  
a manager.

Come be a part of our wonderful dealer base,  
and be “where the dealers shop!”

Visit us at:

**1825 N. Burkhart Rd., Howell, MI 48855**

## FREELAND ANTIQUE MALL

5868 Midland Rd.

Freeland, MI 48623

**FreelandAntiqueMall.com**

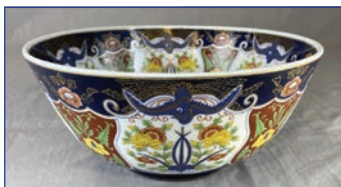
989-573-8465

## Epic Annual Holiday Entertaining & Gift Auction

SIMULCAST ONLINE BIDDING STARTS SATURDAY, NOVEMBER 13 @ 10 AM

Pre-Bidding is Open Now! Go To [www.EpicAuctions.com](http://www.EpicAuctions.com) to view the catalog and Bid Online!

**FEATURING:** Sterling Silver, Fine China, Crystal, Toys, Trains, and many other items for Holiday Entertaining and Gift Giving.



Our annual holiday auction features special items reserved through the past year with an eye towards entertaining and gift giving at this time of year.

You will find luxurious tabletop and home decor items in the categories of Sterling silver, fine china and crystal, both antique and contemporary. Also featured are gift items including antique handbags and fashion accessories, vanity items, fur coats, classic toys and trains and even a collection of wine. You will find pieces from Tiffany & Co., Cartier, Waterford, Orrefors, Baccarat, Dorothy Thorpe, Gorham, Lalique, Reed & Barton, Lynn Chase, Noritake, Limoges, Richard Ginori, Royal Worcester, Rosenthal, Copeland Spode, Lenox, Wedgwood, RS Prussia, Halcyon Days, Disney, Mandarin and many more.

**AUCTIONEER'S NOTE: PICK UP FOR THIS AUCTION IS Monday, November 15, 2021 by appointment only from 9am to 6pm in Leslie, MI. Shipping is available.**



Bradley A. Stoecker,  
MBA, CAI, AMM,  
AARE, CES



Professional Auctioneer,  
Appraiser and Real Estate Broker

**EpicAuctions.com**

517-927-5028

2020 & 2021 MI Auctioneers Assoc. President

