

THE AUCTION EXCHANGE[®] And COLLECTORS NEWS

\$150

ANTIQUES • COLLECTIBLES • ESTATES • FARM • REAL ESTATE • COMMERCIAL

www.eauctionexchange.com

June 22, 2021

Vol. 44, No. 28

ACROSS THE AUCTION BLOCK

1969 Chevy Camaro revved up the bidding to \$32,000

BY NANCY
KELLY

GOSHEN, Ind. —
Peddlers Auction Com-

pany hosts several auc-
tions each year at their
facility in Goshen. But
when there are excep-
tional offerings that

require a wider audi-
ence, auctioneer Marlin
Yoder and his staff take
them to the internet.
This June auction fea-
tured some of those out-
standing gems. Two
very busy in-person
rings were running
during the day, along
with the 140 lots pre-
sented online. Interest-
ingly, most of the items
listed online ended up
selling to on-site buy-
ers. Peddlers Auction
Company certainly has
an enthusiastic local fol-
lowing!

Fortunately, the larg-
est and highest-valued
lot of the day was
claimed by a local bid-
der. The red 1969 Chev-
rolet Camaro had an SS
(Super Sport) logo on
the front grill and steer-
ing wheel. Yoder said
the last time it was driv-
en it was taken up to
130 mph, and then it
was banished by Dad to

the barn. There it sat
untouched for 33 years.
There was minimal body
rust after its long hiber-
nation, but it still
required some work,
both functionally and
cosmetically. However,
that did not deter the
fans who drove the final
bid up to \$32,000.

Some unusual and
beautiful items were
consigned to this sale,
including some antique
bronzes. There was an
extremely rare figure of
an ancient female war-
rior wearing a helmet
and buttoning her gown
over her right shoulder.
It was stamped with Tif-
fany & Co. plus the art-
ist's name Pierre Emile
Hébert. It stood 46 in-
ches tall and was in
immaculate condition.
This incredibly detailed
piece soared to a final
bid of \$5,500. A 25-inch-
tall bronze by Claude
Michel Clodion depict-



Above: This red 1969 Chevrolet Camaro languished in a barn for 30 years before being rescued with a high bid of \$32,000.



Above: There were several unusual and beautiful lamps offered, including this Louis Tiffany Furnaces Co. piece that left with a high bid of \$1,400.

ing a family at play
reached a final bid of
\$300, while a bronze
compote marked L'age
D'or (The Golden Age or
Age of Gold) signed by
artist Auguste De Wever
measuring 13 inches
wide by 8 inches tall
closed at \$220.

An array of lamps in a
variety of colors and
styles was very vivid

and appealing. Topping
the list was a Louis Tif-
fany Furnaces Co. fish
scale pattern green lamp
shade with a metal base
marked GTD. This love-
ly masterpiece stood 23
inches tall and was
claimed with a final bid
of \$1,400. As fragile as
it was beautiful, a rock

See Peddler page 4

SHOW REPORT

Shoppers delighted to be back at Barry County show

BY KARIN
MILLIMAN

HASTINGS, Mich. —
With the sun shining and
vendors and shoppers
excited to finally be able
to attend an actual in-per-
son show, the Barry
County Antique Show
was full of promise. It



Above: This marble top
table was in great shape,
with no cracks or chips on
the marble. It was priced
\$425.

took place on May 1-2, at
the Barry Expo Center.

There were vendors set
up outside since the sun
was out and the weather
was rather warm for the
first of May. A variety of
outside metal pieces
made a very bright and
varied display right in
front of the building.
There were flowers and
roosters, and just about
every kind of animal that
might look good in your
front yard. These were
made to withstand the
weather and the bright
colors made this a very
fun display to browse
through.

A beautiful slag glass
lamp had palm trees and
bridges on it. In shades of
brown and in working
condition; it was priced to
sell at only \$475. This
was just one of many

quality pieces in the
booth of Fox Hollow
Antiques. Jim Green is
the owner and said he did
his first show in 1980. He
is always set up at the
Allegan Antique Market,
which he started doing in
1982. He also had a beau-
tiful 31-inch marble-top
table. This one was wal-
nut and was priced at
\$425. He also had a bar-
ley-twist plant stand
priced at \$250. It was
made of oak and the bar-
ley twist under the table-
top ended up on ball feet.
This was a beautiful piece
which would have been
comfortable in a formal
parlor or in a modern liv-
ing room.

A painting of a ship at
sea measured 36 by 26
inches. This beautiful
ship was the RMS Royal
Edward. The painting



Above: Featuring palm
trees and bridges, this slag
lamp was in mint condi-
tion. It was priced \$475.

showed it moving through
some very choppy looking
water with some mean
looking clouds overhead.
This ship originally was
launched in 1907 to run
British mail service to
Egypt between Marseilles
and Alexandria. The ser-
vice was not successful.

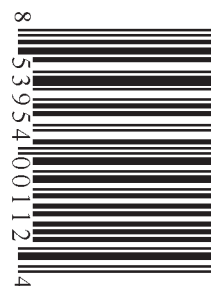


Above: A unique way of showing off some great pieces,
this shadowbox highlighted the exquisite detail of the
bead work on three purses. It was marked \$695.

The ship was then sold to
the newly established
Toronto-based Canadian
Northern Steamship
Company. At the start of
World War I, the Royal
Edward was used to bring
Canadian troops to

Europe. A German sub-
marine launched one tor-
pedo and the ship sank
within six minutes with
great loss of lives. It was
priced \$1,500 by Gregory

See Barry County page 11



**SINCE 1978 THE WEEKLY AUCTION & COLLECTORS
GUIDE FOR THE GREAT LAKES REGION**

**Pook
& Pook
Inc.**

**463 EAST LANCASTER AVENUE
DOWNTOWN, PENNSYLVANIA 19335
P: (610) 269-4040
F: (610) 269-9274
INFO@POOKANDPOOK.COM
WWW.POOKANDPOOK.COM
ONLINE BIDDING AT WWW.BIDSQUARE.COM
AND WWW.INVALUABLE.COM**

AUCTIONEERS AND APPRAISERS

ONLINE ONLY DECORATIVE ARTS AUCTION

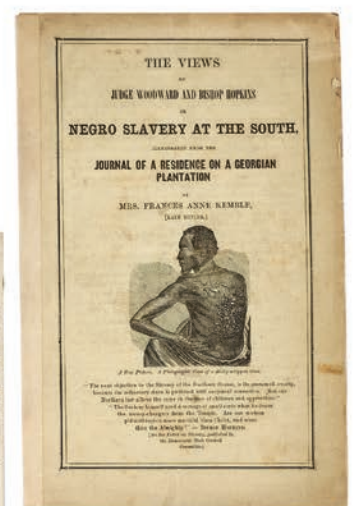
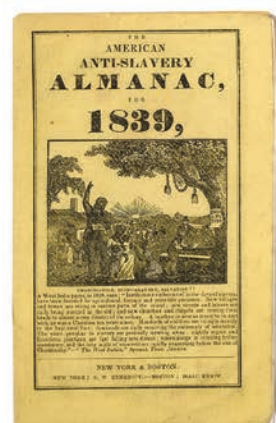
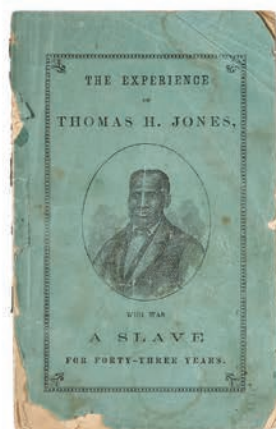
WEDNESDAY, JULY 28TH & THURSDAY, JULY 29TH, 2021



PHOTOGRAPHY,
PRINTS
& EPHEMERA
AUCTION

AUGUST 18, 2021

TO CONSIGN TO THIS AUCTION,
PLEASE EMAIL PHOTOGRAPHS TO
INFO@POOKANDPOOK.COM
OR CALL (610) 269-4040
TO SPEAK WITH AN APPRAISER.





Peddler

FROM FRONT PAGE

glass lamp with glass beaded fringe featured a rose-colored shade and multi-colored lighted base. Standing 25-inches tall, it left with a high bid of \$375. Next, there was a bronze maiden gently intertwined in vines as she appeared to be plucking a flower surrounded by three glass beaded bulb shades. This L’aube Fleurie (bunch of flowers) lamp by sculptor F. Moreau was gratefully claimed with a final bid of \$375. Finally, a 20-inch-tall desk lamp with two matching burnt orange glass shades marked Handel drew a final bid of \$370. Other beautiful lamps, vases, sculptures, and home decorative accessories were also available to add accents to any setting.

There was an incredible chance to purchase a 130-piece set of Royal Albert dishes. Featuring the Old Country Roses pattern, this bone china set included full service for 12 along with serving platters and bowls, tea and coffee pots, and

creamers. There were also silver serving utensils and a food warmer. This lavish ensemble was claimed with a final bid of \$725.

A bit of local history was presented to the appreciative crowd. There was an arrow-shaped red and white wooden double-sided 11 by 36-inch sign that read “Sale Romaine Sherman, Auctioneer”. From Goshen, Ind., he was an Indiana Auctioneers Association Hall of Fame winner in 1985 and a National Auctioneers Association Hall of Fame winner in 1974. His memory lived on with this keepsake purchase made with a high bid of \$350 to an onsite buyer.

There were several furniture pieces, all in pristine condition, that would be delightful to own. A dark stained wood corner cabinet with four wooden shelves and a very ornate wood and mirror top stood about 60 inches tall on three legs. Attributed to the 1890s, this unique cabinet found a new home with a bid of \$300. A Hoosier kitchen cabinet measuring 70 inches tall bore a worn oval metal name plate that perhaps read “Elwell”. There was a large metal work surface and the top three cupboard doors each had a glass accent. With many practical uses, this historical item was claimed with a high bid of \$180.

Listed as a “world library table”, this educational and entertaining conversation piece featured a glossy top with an inlaid design of the world. It was constructed of light-colored wood on a metal frame with etched images on the sides and the drawer



Above: A bit of local history was offered with this wooden sign that belonged to Hall of Fame auctioneer Romaine Sherman of Goshen, Ind. It was claimed with a high bid of \$350.

face. This appealing work of art and practical furniture piece was claimed with a high bid of \$150.

Representing an entirely different category, there was an antique brass Powell 3 chime steam whistle with built in valve. It featured a star logo on one side of the valve and the bell measured approximately 4 inches wide and 9 inches tall. It left with a high bid of \$275. Somewhat related, a handsome American Bourdon Gauge produced by American Steam Gauge and Valve Manufacturing Company was claimed with a \$100 bid.

Several model vehicles were well received by the crowd. An International 1946 grain truck Model K-5 diecast metal 1:16 scale still in the original box finished at \$150. The Agco Parts limited edition 90th anniversary S77 Tritura Gleaner 1:24 scale combine with box drew a final bid of \$140. There was a SpecCast Oliver Super 88 with 2-row corn picker that finished at \$130, a Case 4-WD 4994 model tractor for \$95, an Ertl Case 2594 in box for \$85, and a very detailed International Harvester backhoe with front loader that left with a final bid of \$80, plus many more great models.

To see a calendar of upcoming events or to learn about consignment opportunities, visit the Peddlers Auction website at www.peddler-sauction.com.



Above: A highly collectible antique brass Powell steam whistle left with a high bid of \$275.



Above: This incredibly detailed bronze figure by artist Pierre Emile Hébert and stamped Tiffany and Co. was claimed with a high bid of \$5,500.



Above: This lavish 130 piece set of Royal Albert dishes and serving utensils was claimed with a final bid of \$725.



Above: The Agco Parts limited edition S77 Tritura Gleaner combine did well with a final bid of \$140.



Above: Featuring a bronze maiden gently intertwined in branches and surrounded by three glass beaded bulb shades, this F. Moreau lamp was claimed with a final bid of \$375.



Above: Appealing and educational, this glossy world library table was decorated with beautiful etchings of the world and other images. It left with a high bid of \$150.



Above: As fragile as it was beautiful, this 25-inch-tall rock glass lamp with glass beaded fringe left with a high bid of \$375.



Above: This ornate corner cabinet attributed to the 1890s was rehomed with a final bid of \$300.



Above: Standing 70 inches tall, this massive Hoosier style kitchen cabinet will provide many storage options to the new owner. It was claimed with a high bid of \$180.

ORDER FORM

SUBSCRIPTIONS

SAMPLE



THE AUCTION EXCHANGE

And COLLECTORS NEWS®

PO Box 90, Knightstown, IN 46148-0090

Phone Toll Free (888) 339-3795, x134 • Fax (877) 223-3778

info@eauctionexchange.com



☐ Free Sample Copy of *The Auction Exchange & Collectors News*

SUBSCRIPTIONS: ☐ New Subscription ☐ Renewal

☐ \$32⁰⁰ for 1 year (51 issues)

☐ \$57⁰⁰ for 2 years (102 issues)

☐ \$82⁰⁰ for 3 years (153 issues)

☐ \$151⁰⁰ for Canadian or \$130⁰⁰ 1st Class in U.S., 1 year

Total enclosed: \$

Name

Address

CityStateZip

Phone ()Email



This is a gift, please send a postcard announcing the gift subscription

From

I read *The Auction Exchange* for:

☐ Auction reviews ☐ Articles ☐ Advertising ☐ Other

Mail this completed form with payment to: PO Box 90, Knightstown, IN 46148-0090

CREDIT CARD ORDERS: 888-339-3795

Tony Gregory.....Publisher

Lorri Egan.....Publication Mgr./Advertising

Connie Swaim.....Managing Editor

Carol Johnson.....Pre-press Manager

Publishers Emeritus: John Armstrong,
Randy Barz, Judy Huxmann, Lars Svendsen

CONTRIBUTING WRITERS:

Haley Filhart Nancy Kelly

Julia Henri Larry LeMasters

Jack Kelly Karin Milliman

Auction Exchange and Collectors News
Published weekly except one week in December
(51 issues) and mailed every Thursday
ISSN: 0279-0950
Published by MidCountry Media, Inc.
27 N. Jefferson St., PO Box 90
Knightstown, IN 46148
Periodicals postage paid at Knightstown, Indiana

Subscription price: \$32.00 for one year
\$57.00 for two years; \$82.00 for three years

Canadian subscriptions are:
\$151.00 per year First Class (US funds)

POSTMASTER:
Send address changes to:
The Auction Exchange and Collectors News
PO Box 90
Knightstown, IN 46148-0090

SUBSCRIBERS:
We print the advertisements as sent to us by
the auctioneer. It is not possible to check the
correctness of the listed items, so before
traveling a long distance for a particular item,
contact the auctioneer first by phone.

Reproduction in any form is prohibited without
the written consent of the publishers.
ALL RIGHTS RESERVED.

POSTAL REPORT

Without fail for 42 years, The Auction Exchange & Collectors News
has been delivered to the USPS by 5 pm every Friday.

Currently we are delivering the newspaper to the USPS by midnight Thursday. Despite this
early entry into the postal stream and our vociferous lobbying at all levels of the USPS, we
are experiencing delivery problems in the following areas:

Stockbridge MI, White Lake MI

If you don't receive a paper by Tuesday's mail, you may call us to have a paper sent first class.

If it is after normal business hours, please call 888-339-3795 ext. 177.
Please also call your Post Office to report your late delivery.

GENERAL ADVERTISING INFORMATION

DEADLINE IS WEDNESDAY AT 12 NOON

Unless otherwise noted

ADVERTISING SIZES AND RATES

1/8 page (5"Wx4"H) - \$83.80 1/2 page (10¼"Wx8"H) - \$315.56

1/4 page (5"Wx8"H) - \$157.77 Full page (10¼"Wx16"H) - \$546.15

Call for additional sizes and rates 888-339-3795

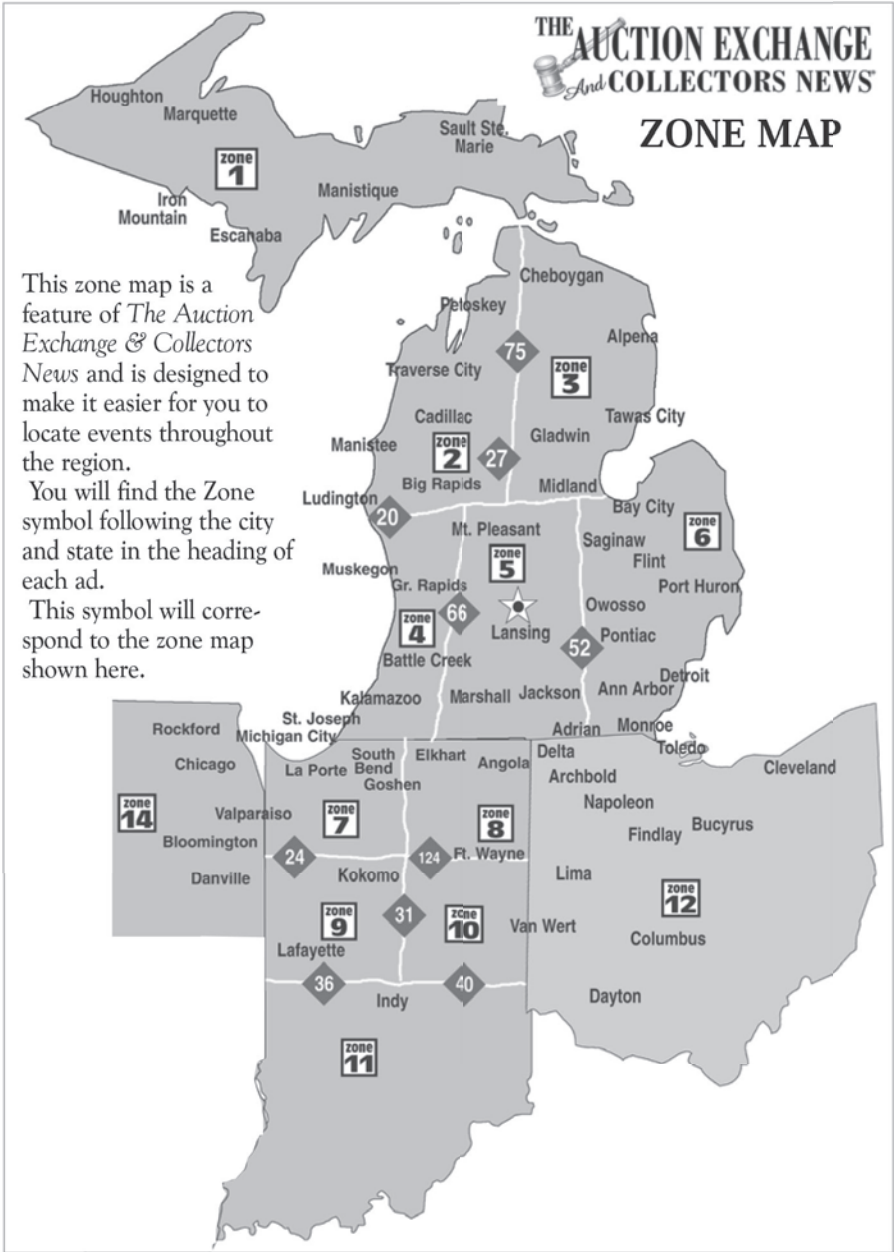
Open Rate
Our open rate is calculated at \$7.33
per column inch. Call for more
information about our Low Cost
Standard Open Rate (\$6.98/col.)
which is based on a minimum of 10
point type in the body copy.

Display Advertising
Each page is six columns wide (10-
1/4 inches) by 15-1/2 inches high.
Each column is 1-5/8 inches wide.
We use a minimum of 10 pt. type (for
body copy) for purposes of readabili-
ty, and specific point sizes for head-
ing (24 pt.), date (18 pt.), city/state
(16 pt.) so please keep this in mind as
you plan your ad. We typeset your ad
to fit our specifications while keeping
in mind your requirements and the
need to minimize the cost of your ad.
Back Cover Ads: (Non-auction
ads only.) Back cover ads are booked
in advance by reservation - call for
availability.

Deadlines/Sending Copy: Our
deadline is 12 noon on the
Wednesday before the issue date,
(Monday). All material must be
received by this time, including pho-
tographs. (Call for holiday sched-
ules.) A 10% surcharge will be
added to display advertising received
Wednesday between 12 Noon and
3:00 p.m. We cannot always guaran-
tee insertion of late ads. In all cases,
it's a good idea to call and notify us
that an ad is being sent, and to con-
firm that your ad has been received.
Mail Your Copy: 27 N. Jefferson
St., Knightstown, IN 46148. First
class mail may or may not be deliv-

ered by deadline if you mail on
Monday or later. If you mail on
Tuesday, send by U.S. Express
Mail, UPS Next Day or other "next
day" services.
Fax Your Copy: You may fax your
ad to us at: 877-223-3778.
E-Mail: Please send "Text Only"
format, we cannot use files that have
been saved in their native software.
Email address:
info@eauctionexchange.com
Photos: should be sent in JPG for-
mat, as attachments to E-mail. We
accept color, or black and white.
Accuracy: Every effort is made to
ensure the accuracy of your finished
ad. Sending it to us well in advance
is essential in allowing adequate
time for proofing and faxing layouts
to you for approval. We assume no
guarantee or liability concerning the
accuracy of published advertise-
ments.

ISSUE DATE	DEADLINE (NOON)
JUNE 29	WED., JUNE 23
JULY 6	WED., JUNE 30
JULY 13	WED., JULY 7
JULY 20	WED., JULY 14
JULY 27	WED., JULY 21
AUGUST 3	WED., JULY 28
AUGUST 10 ...	WED., AUGUST 4
AUGUST 17 ..	WED., AUGUST 11



UPCOMING AUCTION CALENDAR

JANUARYFEBRUARYMARCHAPRILMAYJUNEJULYAUGUSTSEPTEMBEROCTOBERNOVEMBERDECEMBER

The Upcoming Auction Calendar is a listing of future Auctions beyond the current week.

Auctioneers: This service is provided at no charge. As with everything - we do our utmost to make sure

that your Auction is listed in a timely and accurate fashion.

For our Readership: For more thorough listings contact the Auctioneer personally and tell them where you saw their ad!

ZONE 4

Fri., Jul. 30, Stantons Auctioneers, Ammo, Gun, Misc., *Hastings, MI*

ZONE 5

Sat., Jul. 17, Yutzy's Auction Service, Farm, *Charlotte, MI*

ZONE 12

Thu., Jul. 1, Whalen Realty & Auction, Equipment, *Neapolis, OH*

Sat., Jul. 10, Bonnigson & Assoc Realty & Auctioneers, Farm Machinery, *Wauseon, OH*

Sat., Jul. 10, Whalen Realty & Auction, Equip., Tool, HH, *Napoleon, OH*

Be Sure To Say. "I Saw It In The Auction Exchange & Collector's News!"

ADVERTISERS!

Verify that your ad was received! Whether you faxed or e-mailed, call toll-free for verification:

888-339-3795

LIST YOUR UPCOMING AUCTIONS FREE!

Day	Date	Auction Company	Type of Auction	Town	State

Mail to: The Auction Exchange & Collectors News
PO Box 90, Knightstown, IN 46148-0090

Need to Contact Us?
Call: 1.888.339.3795 ext. 134
E-mail: info@eauctionexchange.com



ESTATE AUCTIONS

TRACTORS * EQUIPMENT * SHOP TOOLS * HOUSEHOLD
ANTIQUES/PRIMITIVES

Saturday, JUNE 26 @ 10:00 AM

LOCATION: 704 E. HOLLAND LAKE RD.

DIRECTIONS: South of Stanton, MI on M-66, 4 miles to Holland Lake Rd., East 1½ miles to Auction

SHERIDAN, MI zone 4

This is a HUGE AUCTION! 3 auctioneers selling ALL Day! Having moved into retirement home, Louise Williams will sell the following articles from the Home & Farm. 70-year accumulation.

Please view website for more info and 800 pictures. 10% BP.

TRACTORS/RELATED: IHC 1850 Tractor w/Loader, RUNS; Ford 4500 Loader/Backhoe, Non-Running; Large CASE Dozer, Non-Running; Older Cockshutt Tractor, non-running; Large amount of scrap metal; automotive parts & Lights. **SHOP EQUIPMENT:** Newer Automotive Two Post Lift; (2) Metal Lathes; (2) Hydraulic Presses; One Ton Chain Hoist; Metal Cutting Band Saw; (3) Welders; Torch Set; Industrial floor Fan; Jointer; Wood Lathe; (2) Table Saws; (2) Drill Presses; Portable air compressor; Dayton Spot Welder; (2) Bench Grinders; Shop vises; (4) Simplex Jacks; (2) Chop Saws; Traveler Grease Pump; Craftsman 33 gal. Air compressor; generator; **TOOLS:** (4) Rolling tool boxes FULL!!; Machinist Tools; Milwaukee SawZall; Cen-Tech Inspection Camera; Air Tools; Angle Grinders; Wrenches; Powered Winch; Sockets; Impact Sets; Pipe threading Kit; Welding Clamps; Farm jack; Rotary Hammer Drill; Battery chargers; Electric Power Washer; Delta 15" Scroll Saw; **LAWN & GARDEN:** Shop built Log Splitter; Agri-Fab Lawn Vacuum; (5) Riding Lawn Mowers; Snowblower Attachment; Lawn Roller; Craftsman Push Trimmer; Husqvarna 257 chain saw; Lumber; Fence Posts; Log chains; **ANTIQUES/COLLECTIBLES:** Clipper Fanning Mill & Bean Sorter; Nail Keg; Cross Cut Saws; milk Cans; Copper Boiler; License Plates; Schwinn Bicycle; Enameled Light Fixtures; Wood Crates; Iron Gate; Cant Hook; Enamel Top Table; Head Planters; Mid-Century Starburst wall clock; (3) Metal Lunch Boxes; Pyrex; Gratiot County Atlas, 1901; (2) Oak T-back Chairs; Tall Oak Chest; Oak 4 drawer chest; Chifarobe; Waterfall chest; Painted Dresser; small Stamp Collection; Lionel Model Train Set, track & 15 cars; Child's Toys; Dolls; Blanket Chest; Lane Cedar Chest; Fly fishing Rods; Sewing goods; Viking Sewing Machine; Singer Treadle Sewing Machine; Detect-o-Gram scale; (3) Wood Ammo Crates; **HOUSEHOLD:** Living Room, Dining room & Bedroom Furniture; Chest Freezer; Microwave; Kitchen Aid Mixer; Corel Dishes; 19" TV; Food Saver; Humidifier; \$600 Home air Purifier, 30 days new; Metal Shelving; Canning Jars; Combination Floor Safe; & Much More!

Estate of Hobart 'Bud' Williams
Louise Williams, Seller





Auction Manager Jamie Meyers
(616) 754-9437
www.MerrittAuctionService.HiBid.com



YOU'RE MISSING OUT ON A LOT OF GREAT AUCTIONS!

ALL ASSOCIATION MEMBERS IN MICHIGAN, INDIANA, & OHIO ARE USING GOTOAUCTION.COM

VISIT & BOOKMARK

GoToAuction.com

Feed Your Auction Addiction With

The Auction Exchange And Collector's News!



LARGE CENTENNIAL FARM AUCTION

SATURDAY JUNE 26, 2021 @ 10:30 AM

Inspection - Friday only, 6/25 12:00 noon to 5 pm and Saturday morning 6/26 prior to sale with plenty of off-road parking available.

LOCATION: 8159 GRAFTON RD.

NEWPORT, MI 48166 zone 6

THE ESTATE OF JOHN OERTHER SR

130-YEAR-OLD CENTENNIAL FARM AUCTION

TRACTORS, IMPLEMENTS, TOOLS, TRUCKS, BUILDING, TRACTOR PARTS, SCRAP METAL

2 - Oliver Orchard Tractors • Oliver Cletrac Dozer • Oliver 88 Diesel • Oliver 77 Diesel • Oliver Hart Parr on steel • Oliver 60 Tractors • Oliver 70 Tractors • 1 - Oliver 88 Tractor • Oliver 90 Tractor • Oliver 770 Tractor • Allis Chalmers WC on steel • Allis Chalmers WD • Case DC • John Deer Styled B • Massey Harris Tractor • Large Dozer Loader • 1949 Chevrolet 6400 Farm Truck stored inside • 2 – Old International Farm Trucks • Old COE Dodge Truck • JD Power Unit • Triaxle Flatbed Gooseneck Trailer • Grimmer Schmidt Towable Air Compressor with 302 Engine • 1 – Bottom Trailer Plow • 2 – 3 pt. 2 Bottom Plows • 2 – 2 Bottom Trailer Plows • Oliver 3 Bottom Plow • Oliver 4 Bottom Trailer Plow • Oliver Steel Wheel Grain Dill stored inside • Oliver Pull type Road Grader • Clod Buster Roller • Side Delivery Rake • Brillion Cultipacker Wheels • Hydraulic 3 pt. Boom • People Mover Hayride Wagon • Pull type 5 foot Brush Hog • Large Boat on Hay Wagon Running Gear • 2 – Truck Storage Boxes • 20 x 40 Quonset Steel Building to be moved • Large amount of tractor weights consisting of frame weights, wheel weights, suitcase weights • Large Assortment of Tractor Sheet Metal Hoods • Side Skirts • Gas Tanks • Motor Parts • Assorted Channel Iron • Numerous Tip Toe Steel Tractor Wheels • Assortment of Tractor Tire Rims • 2 – DeKalb Chick Signs • Large Shop Anvil • Old Oil Cans • Shop Vises • Machinist Gauges • Tools & Tool Boxes • Oliver & John Deere Tractor Umbrellas • Wringer Washer • Primitive Wood Outhouse • Old Primitive Tools & Farm Items • Large amount of Scrap Metal and Vehicles

ITEM OF INTEREST – Rare 1969 Bolens Diablo Rouge Snowmobile model 502 or 503 stored away for at least 40 years – needs work!

This is a sale you will not want to miss! Mr. Oerther was an avid Oliver Collector. Farm has been in the family for over 130 years so many surprises!

Visit our website @ dundeeauctionllc.com to view pictures as new ones will be added in the coming days as we progress with cleaning out barns and property.

Dundee Auction LLC is a diverse auction company. We do “live” auctions the 1st, 3rd, and 5th Saturday of the month at our farm in Dundee. Our auction team also offers on-site and on-line auctions, tagged estate sales, Real Estate, complete buy out, or we can move it to another location.



DUNDEE AUCTION LLC

3223 Dennison Rd., Dundee, MI 48131


Estate • Household • Farm Complete Service

(734) 777-6461 - Cell (734) 529-3800

Mark Oberly, Auctioneer

Email: DundeeAuctionllc@gmail.com

For more info go to websites: www.dundeeauctionllc.com, www.auctionzip.com ID #3437 or www.gotoauction.com ID #2031



Weaver ESTATE AUCTION

Starting at

Saturday, June 26, 2021 • 9:00 am

Preview: June 25, 10-4 pm

LOCATION: 16280 BRICK ROAD.

DIRECTIONS: 1 mile north of SR 23 on Gumwood Rd. to Brick Rd., then west.

GRANGER, INDIANA 46530 zone 8

TRACTOR, FARM IMPLEMENTS, LAWN GARDEN, and TOOLS: Massey Ferguson Model 180 diesel tractor with Kelley fully hydraulic loader, 3 pt., PTO single hydraulic remote 155-38 rear tires, Serial #9A-70316, 2996 engine hours, in great condition; Good Minneapolis Moline 3 pt. tube 3-bottom moldboard plow; Heavy duty brush hog type hydraulic adjustable approx. 8' wide 3 pt. grader blade; 3 pt. Cherry picking tractor attachment; John Deere Model F525 riding lawn mower front mount mower deck 858 engine hours, 38" deck and power leaf pickup attachment needs engine work, AS IS; John Deere Model LX288 riding mower hydrostatic transmission 54" deck approximate 450 engine hours and John Deere power bagger attachment; Troy-Bilt rear-tine Horse model walk-behind reartine rototiller with mark-out attachment; Various lawn and garden hand tools; Precision planter with plates; Craftsman floor model table saw; Craftsman radial arm saw; Portable air compressors; Small electric hand tools; Various corded and cordless DeWALT tools; Gas-powered Echo hedge trimmer; Tool boxes; Miscellaneous small hand tools; Craftsman self-propelled approximate 22" platinum walk behind push mower; Ladders, step ladders and extension ladders; Woodworking tools; Craftsman router.

ANTIQUE FURNITURE: Antique quarter-sawn 5 leg oak dining room table with leaves; Set of antique solid pressed back side chairs; Blizzard approximate 24" wide x 40" tall ice chest; Solid curved-front glass china cupboard; Solid oak refinished mirrored back side board buffet; Square oak dining table; Glass shelf curved-front walnut veneered lighted back china cupboard; Very nice Walnut veneered marble top parlor table; Solid oak mirror sided hat box dresser; Spoon-carved solid oak secretary with adjustable bookshelf base; Solid oak bookcase secretary with curved glass front and adjustable side shelves mirror back; 8' wide solid oak glass retail sales counter display cabinet; 46" x 80" antique leaded glass window; Antique Victrola record player; Antique Edison phonograph; Very nice solid oak 5' wide by approx. 7' tall beveled mirror top and side antique fireplace surround; 3-shelf lawyers stacking bookcase; Solid oak glass front 3-shelf china cabinet; Solid oak glass front approximate 7' tall by 48" wide adjustable shelf china cupboard; 3-drawer chest of drawers Walnut with wood pulls; Other various Curio and curved front glass displays – One very nice corner 2-door display with mirror top and a very ornate claw footed quarter-sawn oak curved glass china cabinet; Additional parlor tables, some maple and walnut and some with marble top; Solid quarter-sawn oak boot box base sitting bench; Antique walnut-finished ornate back pump organ; Boot box base hall tree with hat and hooks; Solid oak pressed wood front antique wardrobe with drawer base; Pair of matching needlepoint backed walnut parlor chairs; Solid oak commode with rear towel bar; Antique Depression era blanket chest; Quarter-sawn 4-shelf antique stackable bookcase; Quarter-sawn oak library table; Solid cherry antique drop front desk; Various marble top Walnut Victorian-style dressers; Varied antique beds which include a youth sized maple; Various wrought iron and baby beds; Full-sized antique oak bed; Quarter-sawn oak drop front 3-drawer secretary; Mirrored-back 3-drawer solid oak chest of drawers; Antique rockers; Antique converted to queen size quarter-sawn tall headboard back antique bed; 5-drawer chest of drawers and a matching 4-drawer dresser with mirror back; Various antique shelf and mantel clocks, radios; Various antique lamps and hanging lights; Various antique pictures and prints in mostly wooden antique frames.

DOLLS, ANTIQUE and MISCELLANEOUS: Enormous doll collection to include - antique porcelain and china dolls of all different sizes some new in the box – Shirley Temple in original box; Large Gund bear collections; Enormous amount of antique and collectable doll furnishings to include high chairs, bassinets, strollers, furniture and others; Large amount of Barbie and Ken dolls; Miniature Bisque dolls; Child portrait and baby cups, saucers, and baby plates; Miscellaneous glassware many hand painted and European antique porcelain; Varied amount of antique spongeware, pottery and crockware including varied blue Bee-sting antique crocks; Wooden antique wheelbarrow; Antique wooden red wagon; Varied amount of antique Disney and other collectible figurines; Antique toys and books; Antique porcelain and graniteware; Antique Fisher-Price wooden pull toys; Spinning tops and other early pressed tin toys; Large amount of collectable Star Wars toys and figures; Large amount of wicker, some new some antique and some baby wicker and outdoor wicker; Antique and primitive tools; Jars, nail keg, boiler and other primitives; Antique wooden snow sleds.



HAHN

HahnAuctioneers.com

Jason Hahn (574) 536-7682

Office: (574) 773-8445 Nappanee, IN • AC39800021



CALL FOR TERMS

Seller: Estate of Corrine Weaver Frank Weaver, Owner

PUBLIC AUCTION "FUN SERVICES" OF GRAND RAPIDS

TUESDAY MORNING, JUNE 22ND @ 10 AM

Inspection - Thurs., June 17th, 9:00 AM-4:00 PM & Sat., June 19th, 9:00 AM-4:00 PM
LOCATION: 4160 44TH ST. SE.

GRAND RAPIDS, MICHIGAN zone 4

For additional information call Ken Karston, Fun Services, 616-698-5055

The items to be sold would be ideal for a continued business opportunity, rental companies, Churches, Schools, DayCare, Youth Groups, etc. **VEHICLES & TRAILERS** include a 2011 Chevrolet box truck with a Duramax Diesel engine, 1996 Ford 14 ft. box truck, 1992 Ford E350 box truck with a 14 ft. box, along with a 2016 Pace tandem axle 14 ft. trailer (7 ft. high) with rear ramp door, motorcycle trailer, car dolly, etc. **SOME OF THE GAMES/ATTRACTIONS** include 2 portable dunk tanks, Electronic double shot basketball, Sno Kone & amp; Cotton Candy machines and booths, Bungee Run; 1972 King kiddie chair swing; 1954 National Amusement Device kiddie Ferris wheel; Beep ball crawl; Kiddie Land that includes 4 coin-operated rides on a trailer, Mini Golf; Money machine; Pit stop challenge, Power Jump; 2001 Extreme Engineering Rock Climbing Wall on a trailer, 2 Giant inflatable slides, Adrenaline Rush obstacle course, Trackless train manufactured by Royal Train Rides (Holds up to 18 passengers includes storage covers with a transport trailer). Don't miss the 1973 vintage covered bounce house by Spacewalk and TWO 20' vintage high strikers, circa 1950s or '60s - Both with original bell and paint. Also 6 vintage mallets - 2 of which are NOS.



10% Buyer's Premium.

Absentee and Phone Bidding is available,
call Steven E. Stanton 517-331-8150 or
Michael C. Bleisch 517-231-0868 to arrange.



R **NAA**
REALTOR® Auctioneer
144 S. Main Street,
P.O. Box 146
Vermontville, MI 49096

50 YEARS
Celebrating More Than
STANTON'S
AUCTIONEERS & REALTORS
Of Service

Ph. 517-726-0181
Fax 517-726-0060

e-mail:
stantonsauctions@sbcglobal.net
www.stantons-auctions.com

Selling all types of personal property and real estate at auction anywhere.
Call for a no-obligation consultation to discuss your personal situation.

ESTATE AUCTION

THURSDAY MORNING, JUNE 24, 10 AM

LOCATION: 3140 WOOD SCHOOL ROAD.

DIRECTIONS: 4 miles west of Hastings on State Road to Wood School Road, then 1 mile north.

HASTINGS, MICHIGAN zone 4



Mr. Whitney was a contract electrician. There are a lot of related tools, wire and other items to be sold that were used in his business. Also, a 2001 Chevy Tahoe, lawn and garden equipment including a lawn sweeper, roller and thatcher, home furnishings with Living, Dining, and bedroom furniture, Aluminum V-bottom fishing boat with a Johnson 9-1/2 HP outboard motor and trailer, hand tools and tool chests, storage shelving, Coleman generator and more.

R **NAA**
REALTOR® Auctioneer
144 S. Main Street,
P.O. Box 146
Vermontville, MI 49096

50 YEARS
Celebrating More Than
STANTON'S
AUCTIONEERS & REALTORS
Of Service

Ph. 517-726-0181
Fax 517-726-0060

e-mail:
stantonsauctions@sbcglobal.net
www.stantons-auctions.com

Selling all types of personal property and real estate at auction anywhere.
Call for a no-obligation consultation to discuss your personal situation.

RAKOWSKI ESTATE AUCTION

SATURDAY MORNING, JUNE 26, 9:30 AM

LOCATION: 4219 18TH STREET.

DORR, MICHIGAN zone 4

This is the 4th sale from this huge estate and we have barely made a dent in the quantity being sold. We are still working on the antiques and collectibles in the basement and now the second floor and attic. The quantity is huge, with items ranging from furniture, to collectibles, primitives, glassware, china, lamps, old, new, and in between and 100's of unpacked boxes. We will not know what there is to sell until it is moved out of the schoolhouse and unpacked. Plan on attending, we will be selling in two rings throughout the day.



R **NAA**
REALTOR® Auctioneer
144 S. Main Street,
P.O. Box 146
Vermontville, MI 49096

50 YEARS
Celebrating More Than
STANTON'S
AUCTIONEERS & REALTORS
Of Service

Ph. 517-726-0181
Fax 517-726-0060

e-mail:
stantonsauctions@sbcglobal.net
www.stantons-auctions.com

Selling all types of personal property and real estate at auction anywhere.
Call for a no-obligation consultation to discuss your personal situation.

2-DAY AUCTION THURSDAY, JULY 1, 2021 @ 10 AM

CAMERAS & CAMERA EQUIP.-MAP COLLECTION

FRIDAY JULY 2, 2021 @ 10 AM

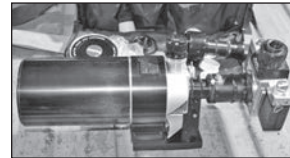
GLASSWARE, FURNITURE, COLLECTIBLES

LOCATION: WHALEN AUCTION BLDG., 8020 MANORE RD.

NEAPOLIS, OH zone 12

(GPS GRAND RAPIDS, OH 43522)

See whalenauction.com for full listing & photos.



THURSDAY: Camera collection from The Late Milton A. Campbell Trust. **100'S CAMERA'S & CAMERA EQUIP.-MENT:** Cameras: Voigtlander, Argus, Olympus, Nikon; Leica; Minolta, Kodak, Movikon; Canon; Kyocera; Lens: Leica, Summicron, Summitar, Nikon, Reflex Nikkor, Schneider Kreuznach, Retina, Curtar-Xenon, Tele-Xenar, Carl Zeiss, Canon, Minolta, Vivitar, Kiron; **CAMERA EQUIPMENT & MORE:** Leica Trinovid 10x50 binoculars; camera bags; Speed graphic Graflex; Westcott backgrounds; Profoto softbox; Speedotron 2405 flash system; 3 lamps, cords, tripods; Boger TC-1 copy stand; **Large collection of late 1800's & early 1900's City of Toledo Maps, Lucas County,** many rolled; Books incl. Chadwick Plat Book Vol. 1 & 2, City of Toledo; Toledo Ohio Vol. 3-Sanborn Map Company NY; Maumee Valley Toledo and the Sandusky Region Vol. 1-4; plus others.

FRIDAY-ANTIQUE FURNITURE; GLASSWARE: Labino, Baker & Applebaum, Heisey; Steuben; Northwood; Wavecrest; New Martinsville; Moser; Wedgwood; Carnival, Fire King; Joe St. Clair; Fostoria cracker jar; sugar shakers; bride's basket; custard; pattern; pressed; stemware; hand painted China; depression; cranberry; art glass; opalescent; punch bowl set; 40+ atomizer & perfume bottles; cQuezal art glass shades & others; **Artwork, Primitives & Collectibles.**

TERMS: Cash or check w/I.D., 3% processing fee on credit/debit cards. 7.25% sales tax applies. See whalenauction.com. **ORDER OF SALE:** Thursday selling in 1 line. Friday Selling in 2 lines, 1 selling china & glassware while another sells primitives & misc. Nice auction to attend! **OPEN HOUSE:** Week of auction from 8am-3pm. & Wednesday evening 6-8pm.

WHALEN **WHALEN**
REALTY & AUCTION, LTD.

419-875-6317
Please call Mon.-Fri. from 8am-4pm
Info@whalenauctions.com • www.whalenauction.com
Auctioneers: John & Jason Whalen, Mike Murry,
George Bly, Jacob Ramos
Information herein deemed reliable but not guaranteed.

BEER STEIN & BREWERIANA AUCTION

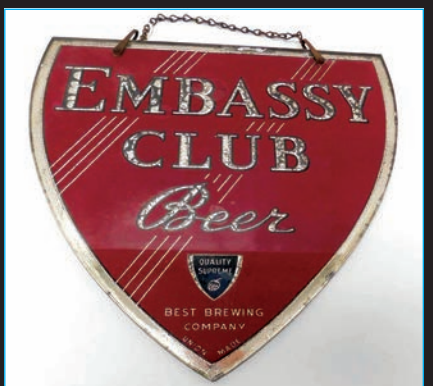
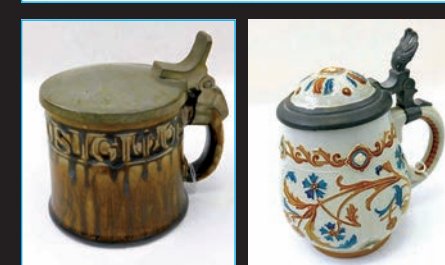
**Online Only Auction
Ending on June 29th**

Preview by appointment
by calling 224-392-3101

Live online broadcast beginning
at 5:30 PM CDT

(We will not have people in the building. You can watch us, call the auction while viewing live and bid during the auction or you can also bid before-hand).

Go to www.denotterauctions.com
for more info or for the link
to the bidding.



LIVE ON-SITE PUBLIC AUCTION THURSDAY, JUNE 24TH @ 12:00 PM

LOCATION: 1766 E VAN BUREN ST.

DIRECTIONS: From White Cloud take M-37 North 4 miles to Evergreen Dr., North (right) 1 mile to Van Buren St., East ½ mile.

WHITE CLOUD, MI 49349 (NEWAYGO CO.) zone 4

Due to the death of her husband, Norm Kitter, Luann Kitter will sell the following overview: 1994 Ford F-450 Super Duty 7.3L diesel flatbed dually; 1995 Ford F-250 Power Stroke diesel 4X4 (needs work); 6 ½'X16' tandem axle trailer w/ramps; Snap-On & Mac roll about tools boxes; Large amount of quality USA made mechanic hand & power tools; Harnischfeger Wire-Matic welder; Lincoln LN-25 wire feed welder; other welders; Lg. acetylene torch set; (8) JD lawn tractors (non-running) & parts: #110, 112, 210, 212; Lots of hardware & much more! Caterpillar 226 diesel skid steer; 2000 Ford F-350 Lariat Super Duty diesel dually 4x4; 10+ trailers; Shop & Heavy Equipment; Farm Equipment; Engines; Scrap iron; Antiques & Collectibles; Farm Primitives; Furniture & much more.



Visit www.artsmithauctioneers.com
or call Noah 616-633-4254

COIN AUCTION 525+ LOTS OF US COINS

SAT., JUNE 26 - STARTING AT 10:00 AM

PREVIEW AT 7:30 AM

FRIDAY NIGHT PREVIEW FROM 5 PM TO 7 PM

LOCATION: 106 E. DUTCH STREET.

WOLCOTTVILLE, INDIANA zone 8

ONLINE BIDDING AVAILABLE: Go to www.strawserauctions.com then go to "Online Auction" and click "Hi-Bid". **Bid online or in person.**

AUCTIONEERS NOTE: This is the second auction for a single owner private collection of coins which is the finest collection we have offered in our 40+ years. Don't miss this auction.

525+ LOTS: MORGANS: large selection of high grade and slabbed including 1879-CC, 80-CC, 81-CC, 82-CC, 83-CC, 84-CC, 85-CC, 89-CC, 90-CC, 91-CC, 92-CC, 93-S, 93, 93-CC, 93-O, 94, 95-O, 95-S, 99, 03-O); **BUST HALVES:** 1803-1838; **BARBER HALVES:** nearly complete set (92-O, 92-S, 93-S, 97-O, 97-S, 14); **BUST QUARTERS:** 1805-1837; **BARBER QUARTERS:** nearly complete set (96-S, rare 13-S); **STANDING LIBERTY QUARTERS:** (1916 VF, 1919 D & S, 1921, 1923); **BUST DIMES AND BARBER DIMES** (1895-O and many other key dates); **BUST HALF DIMES; SHIELD NICKELS** including many high grade and proof; **THREE CENT SILVER** including many high grade and proof; 1909-SVDB Lincoln; **LARGE CENTS** 1797-1857;

TERMS: Cash, check, MC, VISA (3% cc fee), no in-house buyer's premium, 10% online buyer's premium.

Auction Conducted By:



200 North Main Street, Wolcottville, Indiana 46795
Office: 260-854-2859 • Fax: 260-854-3979
Auctioneer: Michael G. Strawser AU01036570 & AC30700060
Auctioneer: Ron Levitz Lic. # AU19600009
Website: www.strawserauctions.com • E-mail: info@strawserauctions.com
Member of the Indiana • Michigan • Pennsylvania Auctioneers Association

DON WOLODKO ESTATE AUCTION SATURDAY, JUNE 26, 10:00 AM

LOCATION: 1721 E. STRANGE HWY.

DIRECTIONS: I69 to the M100 exit #66, north on M66 5 miles or M43 to M100 the south 3 miles to Strange Hwy, west on Strange Hwy 3.9 miles to the sale.

GRAND LEDGE, MICHIGAN 48837 zone 5

The following estate property will be sold at public auction:

OLD THINGS & COLLECTIBLES: Fire Department collection, extinguishers, etc; Eagle collection; Budweiser stein collection (several hundred) & advertising pc's, tap handles; Avon stein collection; 2 Neon Corona signs; Hummingbird collection

LAWN & GARDEN: 2019 John Deere ZTrak Z355 E zero turn mower w/280 hrs; 2 Agri-fab lawn trailers; MTD Yard Machines rototiller; Huskee LT 4200 lawn tractor; Cub Cadet LTX 1042 lawn tractor

HOUSEHOLD: 2 Oak curio cabinets; 4 Oak bookcases; Curio shelf; Small electric appliances; Lamps; Rehem upright freezer; Patio table w/4 chairs; 2 Char-Broil Commercial gas grills

POLEBARN: Generac 5500XL generator; Keller 16' aluminum ext. ladder; 10x20 car port, needs new tarp; Zareba AC A50LIL 50 mile range electric fencer; Lincoln 220 arc welder; 2 Kobalt work benches; Assorted power tools; Craftsman rolling toolchest w/machinist chest

SHIPPING CONTAINER: 8'6"x42' Shipping container; Assortment of hardware and other useful small items

TERMS: Cash, check, credit cards. All items will be sold as is. The seller nor the auctioneer will be responsible for accidents day of sale or items after sold



Okemos, MI
517-394-3006
E-Mail: melw21588@gmail.com
Web: www.melwhiteauctioneer.com



ONLINE AUCTION TOSCHAUCTION.COM

AUCTION STARTS: WED., JUNE 23, 2021

CLOSES: SAT., JUNE 26, 2021

SOFT CLOSE STARTS at 7:00 PM



ALL ITEMS LOCATED AT: TOSCH'S AUCTION FACILITY: 15536 IMLAY CITY RD. (M-21) 1 MILE WEST OF CAPAC, MI 48014

JOHN TOMASCHKO – SALE MANAGER

PHONE: 810-650-2730

INSPECTION MONDAY JUNE 21ST FROM 8AM-5PM AT ABOVE ADDRESS



ST. CLAIR COUNTY SHERIFF/DTE: 2012 Dodge Charger 3.5 V-6, silver; Chevy Tahoes: 2016 long, 4WD, 5.3 V-8, black; 2014 5.3 V-8, white; 2009 4WD, 5.3 V-8, white; 2012 2WD, 5.3 V-8, White. Dodge Chargers: 2018 Interceptor, AWD, 5.7 V-8, blk; 2018 (police), AWD, 5.7 V-8, black. Ford Explorers: 2016 Interceptor, 2WD, 3.7 V-6, black; 2017, 2WD, 3.5 V-6, black; 2013 Chevy Express van, 2WD, 6.0 V-8. **DTE:** 2007 Cadillac CTS, 4 dr, FWD, bronze; **2005 Nissan Armada SE**, 4WD, SUV, V-8, silver; **2013 Ford Fiesta**, 4 dr, FWD, white; **BMW**, white; **2008 Chrysler 300**, off white; **1999 Chevy Blazer**, tan, 4WD; **2006 Pontiac Grand Prix**, 4 dr, green, 3800 v6; **2005 Ford Escape** (mtr. & trans issue); **2003 Ford Taurus**, maroon, 4 dr; 2000 Saturn SL2, brown, (bad mtr); 1999 Toyota Camry, gold, (bad trans); 1998 Saturn (no trans); **1997 Yamaha YZF-600R**, black, (damaged, no key); household items; crossbows; tools; electronics; watches; footwear & more...

For complete list and terms go to: toschauction.com



CURRIE AUCTION WEDNESDAY, JUNE 23, 5:00 PM

LOCATION: 15398 220TH AVE.

DIRECTIONS: From Big Rapids take Perry St. Go West over the freeway to the first road which is 220th Ave and go North to sale site.

LOOK FOR AUCTION SIGNS!!

BIG RAPIDS, MICHIGAN zone 2

ANTIQUES AND COLLECTIBLES: Webley Air Pistol Mark II (Target Model) BB Gun; Mantel Clocks; Orange Kist Cooler; Zenith Radio; Lamps; Hanging Lights; Wooden Medicine Cabinet; Wooden Boxes; Wooden Ammo Boxes; Nesbitts Orange Soda Box; Norton Grinding Wheels Box; Blue Bird "The Diamond Match Co" Box; Shredded Whole Wheat Box; Chamber Pot Cabinet; Wool Blankets; Wooden Pulley; Metal Pulley; Wagon Wheel Hub Light; Coffee and Tea Cans; Porcelain Pots; Soldering Irons; Torch; Lantern; Dolls; Cheese Boxes; Kraut Cutter; Yard Light Fixtures; Spittoons; Wooden Duck Decoys; Floor Lamps; Screen Door; Wooden Doors; Toboggans; Wooden Ladder; Well Pump; Post Hole Digger; Cant Hook; Copper Screen; Anchor Chain; Victorian Sofa; Trunks; Drafting Table; Driftwood; Bird Houses; Ice Saws; Axe; Three Wheel Grain Cart; Wooden Toolbox-es; Pictures; Metal Signs; Stainless Windows; Windows; Porch Swing; Wooden Vise; Wooden Wheelbarrow; Willow Chair; Water Barrel; Minnow Traps; Minnow Buckets; Badminton Set; Binoculars; Stained Glass

HUNTING: Deer Hide; Antlers; Traps; Bear Hides; Hunting Seat; Muskrat Coat; Gun Case; Rivers Edge Treestand

MISCELLANEOUS: 10" Craftsman Miter Saw; Screw Organizers (New); Aluminum Saw Horses; Bench Vise; Light Fixtures; Self-Inflating Mats; Sleeping Bags; Two Burner Stove; Cast Iron Plant Stand; Park Bench; Treadmill; Windmill; Camping Cots; Air Hockey; Baby Crib; Steam Mop; Wet Jet; Cross Country Skis; Closet Organizer; Vases; Dishes; Glasses; 16' Aluminum Canoe; 16' Galvanized Pipe Gate; Canoe Paddles; Gas Cans

OFFICE FURNITURE: Office Chairs; Bookshelves; Desks; Phone System; File Cabinet; Xerox Printer; Conference Tables; Office Dividers

AUCTIONEER NOTE: This is worth coming to, and let your friends know about this sale. This will be only 2 to 3 hours long. This at the auction house in Big Rapids.



CURRIE AUCTION SERVICE

231-349-0533 - PHIL CURRIE - 231-796-6617

717 SHERIDAN ST., BIG RAPIDS, MICHIGAN 49307

Auctioneer ID #: 26066 - License: 2801000043

CONDITIONS & TERMS OF SALE: CASH, GOOD CHECK WITH ID - CREDIT CARDS
NOTHING REMOVED UNTIL SETTLED FOR - NOT RESPONSIBLE FOR LOST OR DAMAGED ITEMS
Verbal statements at time of sale take precedence over written documents

PORTA JOHN

WWW.CURRIEAUCTION.COM & AUCTIONZIP

LUNCH WAGON

Pamela Rose
Broker, Auctioneer, AARE, CAI
419-865-1224

MOVING Real Estate & Personal Property

Moving

AUCTION

LACHINE, MI 49753

Saturday June 26th 2021 @ 10:00 a.m.

Real Estate to be offered @ 12 noon

Directions: 9660 Clewley rd. Lachine MI 49753 From M-65, take Beaver Lake Rd. to Stop sign and turn left onto Clewley rd. Watch For Signs. Concession-tents-porta potties provided

zone 3

REAL ESTATE

SOLD WITH OWNER CONFORMATION * 3 BEDROOMS * 3.5 BATHROOMS * FULL/PARTIAL FINISHED WALK OUT BASEMENT * KNOTTY PINE FLOORS * TONGUE AND GROOVE KNOTTY PINE WALLS * 1/2 LOG KITCHEN CUPBOARDS * ROOF ON HOUSE AND GARAGE LESS THAN 2 YEARS OLD * CENTRAL AIR * GENETEC GENERATOR * UNDERGROUND PET FENCE * 2 CAR DETACHED GARAGE * 100' OF WATERFRONT ON BEAVER LAKE * 2 ADDITIONAL LOTS ON BEAVER LAKE ROAD (REAL ESTATE MAY BE PURCHASED PRIOR TO AUCTION)
TERMS: 5% NON-REFUNDABLE DEPOSIT DAY OF SALE, TAXES TO BE PRO - RATED IN ADVANCE, TO CLOSE WITHIN 30 DAYS THROUGH NORTHERN ABSTRACT AND TITLE CO The home may be sold prior to sale date. Call : Scot McKenzie @ 989-657-0812
NOTE: This is a very Nice Clean Sale Everything is well cared for.

HOUSEHOLD & ANTIQUES

AMISH, PINE TABLE WITH 4 HICKORY CHAIRS * HIGH-TOP BAR TABLE WITH 4 CHAIRS * PINE CARVED BENCH * PRESS BACK CHAIR CANE SEAT * OAK HOOSIER KITCHEN CUPBOARD * TWIG TABLE * OVAL, MAPLE LIBRARY TABLE * LEATHER SOFA AND LOVESEAT AND CHAIR SET * LOG T.V. STAND * BLACK FLAT-TOP TRUNKS * PINE BOXES * LOG BOOKCASE * PINE CORNER CABINET * EPSON PRINTER * BEAR LAMP * SAMSUNG FLAT SCREEN * SEVERAL STAINED GLASS PIECES * MANY HOOKED WOOL RUGS * TOY CAST IRON FURNITURE * CAST IRON HUMPTY DUMPTY * WOODEN BOXES * PAINTED DRESSER * LEATHER OFFICE CHAIR AND OTTOMAN * 3 COMPLETE QUEEN SIZED LOG BEDS * 5 DRAWER LOG CHEST * LOG NIGHTSTAND * LOG DRESSER WITH MIRROR * 2 PRIMITIVE PINE TRUNKS * 3 PINE PIE SAFE WITH SCREENS ON FRONT AND SIDES * TWIG BENCH * PORCELAIN TOP TABLE WITH DRAWER * CHAIR MADE OUT OF WATER SKIS * DOLL DRESSER * WICKER FLOOR PLANTER * BABY LOCK LYRIC SEWING MACHINE * BABY LOCK FLOURISH EMBROIDERY MACHINE * SEWING/QUILTING CABINET * OTT LIGHT * CUTTING TABLE * SEWED QUILTS * CAST IRON PLUTO DOORSTOP * CLOTHES STEAMER * BISSELL POWER FORCE * BRAIDED RUG * BRASS KEROSENE LAMP * DECORATION GOURDS * HAT PINS * 5 GALLON CROCK * OAK 2 DOOR SELLER'S CABINET * RAISED PANEL, PINE GREY MILK PAINT CABINET * LOG END TABLES * NORDIC TRAC C2200 TREADMILL * FRIGIDAIRE 16 CUBIC FT FREEZER * 4 CONCRETE PLANTERS ANTIQUE SNOW SHOES * ANTIQUE TOYS * DOLL COLLECTION * CAST IRON TOYS * TIN TOYS * ANTIQUE TRIANGLE MIRROR * ANTIQUE COAT RACK * ANTIQUE TRUNKS * ANTIQUE HATS * ANTIQUE BASKETS * SEVERAL ANTIQUE BIRDHOUSES * CROCKS & JUGS * SET OF 4 PRESSED WOOD CHAIRS * MUCH MORE

GARAGES & OUTSIDE

2005 SWEETWATER 180 RE CHALLENGER PONTOON 60 HP YAMAHA 2 STROKE MOTOR * 2020 CUB CADET LAWN TRACTOR LX46" XT2 (USED ONCE) * METAL MINNOW TRAPS * FISHING RODS AND REELS * PLANTERS * WOODEN BOXES * COPPER BARREL * EXPERT GRILL * BIRD HOUSES * BLACKSTONE ADVENTURE GRIDDLE * PATIO SET * WROUGHT IRON PATIO BENCH * DOCK SECTION * WOMAN'S GOLF CLUBS * CRAFTSMAN AIR COMPRESSOR * DOUBLE METAL WASHER TUBS * WHEEL BARROW * LAWN TOOLS * GARDEN SUPPLIES * WATER TOYS * DEWALT POWER WASHER * EXTENSION LADDER * T.V. ANTENNA * WELL PUMP HAND * ANIMAL CASE * RED DEVIL LAWN CART * LADDERS * TORO SELF PROPELLED PUSH MOWER WITH BAGGER * SAW HORSES * CRAFTSMAN SHOP VAC 6 GALLON * NETS * ROPE * HELMETS * GAS CANS * 12 GALLON CROCK * SCYTHE * MANY LIFE JACKETS * PLANTERS * GIRL'S HUFFY BIKE * MEN'S MONGOOSE BIKE * GRANITE WARE * TWO 2 TON FLOOR JACKS * BATTERY CHARGER * VISE * BENCH GRINDER * BOAT GAS TANK 8 FLAG POLE * 3 ADIRONDACK CHAIRS * WASH TUBS * WATER SKIS * COPPER WEATHER VEIN WITH DEER MUCH MORE

Terms for personal property:

Cash, Check, Visa or Master Card or Discover. 4% Processing fee on All Credit or Debit Cards. With Proper I.D. Everything Sold As Is Where Is With No Guarantees or Liabilities. Announcements Day of Sale Take Precedence Over Printed Matter. We will be following COVID 19 SAFE PRACTICE. Masks required while signing in for buyers numbers. CDC social distancing guidelines will be followed.

Photos: auctionzip.com Auctioneer Code # 18017

Photos: www.gotoauction.com Auctioneer Code# 6682

Mckenzie

AUCTION

Auctioneers:

Scot & Terry McKenzie

(989)-657-0812

ABSOLUTE AUCTION

SUNDAY, JUNE 26, 2021 @ 10:00 AM

LOCATION: 4471 ROGERS LN.

DIRECTIONS: 1¾ miles south of Beaverton on M-18 to Dale Rd., east on Dale Rd. 2¾ miles to Rogers Lane, north on Rogers Lane to auction site. Watch for A Yoder Auction signs.

BEAVERTON, MI 48612

zone 3

TRAILERS:

Haulmark 8x20 Enclosed Trailer, Like New, • 7x12 Single Axle Trailer Frame (Heavy Duty) • VEHICLES & BOAT: 2004 Wilderness Advantage AX6 36' Fifth Wheel Camper, 4 Slide Outs • 1997 Jaguar 2-Door, XK8 • 2000 Dodge Dakota 4x4, 4-Door Truck • 1986 Bayliner Boat w/Trailer • Coachman Motor Home For Scrap • Camper Trailer For Scrap • MOTORCYCLES & RELATED: 1990 Honda Goldwing GL1500 Motorcycle • 1980 Suzuki GS 1100 Motorcycle • Harley-Davidson Soft Tail Passenger Footboard Kit (NIB) • Bell XL Motorcycle Helmet (New) • Large Amount of Harley-Davidson Motorcycle Parts, Including Motors That are Not Completely Rebuilt and Lots Of Assorted, Parts • 1986 Motorcycle Chassis (New) • Honda Goldwing Motorcycle For Parts • 10X16 SUNROOM SHED • TOOLS, GARAGE, & OUTDOOR ITEMS Champion 9000W Generator, LP/Gas, Electric Start • 10,000W Converter (NIB) • 250 Gallon Propane Tank on Trailer • 50 Gallon Propane Tank • Extreme Pancake Air Compressor • Ridgid Pipe Vise • Hobart AC DC Welder • Craftsman Tap & Die Set • Generac 1900 PSI Power Washer • Steel Toolbox • Tradesman Bench Top Drill Press • Ryobi Router • Freud Router Bit Set • Craftsman Shop Vac • Craftsman Roll-Around Stackable Toolbox • 7" Variable Speed Polish Sander • Large Sandblaster • ¾HP Air Compressor • Magnaforce 2HP Air Compressor • Ryobi 2200V Generator • Wen 3000W Generator • Craftsman Digital Torque Wrench • Delta Metal Chop Saw • Craftsman Belt/Disc Sander • Craftsman Dremel Tool Set • Homelite Chainsaw • Craftsman Chisel Mortise • Freud 8" Dado Set • MK Tile Saw • Ridgid 10" Table Saw • Machinist Tools • Calipers • Depth Gauges • Union Wooden Machinist Toolbox • Workmate Bench • Crescent Wrenches • Allen Wrenches • Husky ½" Air Impact • Central Pneumatic Cutting Tool • Campbell Air Sander • Central Air Angle Die Grinder • Tail Pipe Expander • Auto Body Tear Drop Dolly • New Ratchet Wrench Sets • Master Mechanic Open End Wrenches • Large Quantity of Craftsman Tools • Ingersoll Rand ½" Electric Impact Wrench • 1-Ton Ratchet Chain Falls • Angle Grinders • Craftsman Grinder • Craftsman 15" Planer Moulder (Like New) • American ½" Impact, Electric • Hitachi Coil Nailer • Bostitch Coil Nailer • Bostitch Air Stapler • Metal Tool Box on Wheels • Craftsman Router • Jet Stapler • Hole Saw Set • Jenn Air Oven • Sears Roebuck Sliding Compound Saw • Craftsman Scroll Saw • Valley Bench Grinder • Craftsman Bench Top Drill Press • Post Hole Digger • Wilton Vise • Craftsman Drill w/Original Metal Box • Milwaukee Sawzall • Senco Battery Screw Gun • Craftsman Dremel Set • Porter-Cable Angle Drill • Fishing Poles • Scrap Pile • Stainless Steel Scrap • Fishing Tackle Boxes • Earthquake Ice Auger • HOUSEHOLD & MISCELLANEOUS: Oak Table w/(4) Chairs & (2) Leaves • Ret-Up 10-6W Pro Series Air Plane w/Controls • Jiffy Egg Scale • Solid Brass Manhattan Marine Brass Pump • Eagle Gas Can • Wagnerware Cast Iron • (2) 84" Tall Speakers • Old Bicycles • Oil Lamps • Jacobson 5 Qt. 2-Cycle Can • Kids' Folding Table • Ammo Box • Yankee Screw Drivers • Small Wagon • Pioneer Receiver • Kitchen Cabinets of assorted Sizes • Bathroom Vanities • King Size Headboard • Dressers • Gentleman's Chest • This Is Only A Partial Listing!

Visit our website for pictures and updates.

TIFANIE DEMONACO, OWNER

A Yoder Auction LLC

Aden Yoder, Auctioneer • (989) 429-7049

www.ayoderauction.com • adenyoder@gmail.com

ESTATE AUCTION

REAL ESTATE – PERSONAL PROPERTY

SUNDAY, JUNE 27th, 11:00 AM

LOCATION: 438 RICHARD STREET.

QUINCY, MICHIGAN 49082

zone 5

3 BEDROOM – 2 BATH HOME W/GARAGE

OPEN HOUSE: THURSDAY JUNE 24TH 4 TO 6 PM



TERMS ON REAL ESTATE:

\$5,000.00 Down as Deposit Sale Day, Balance on or Before 45 Days, From Sale Date. NOTE: Your Bidding and Buying is Not Contingent on Financing so please have your Financing Pre-Arranged. Deposit is Non-Refundable, Sale of Real Estate Subject to Approval By Estate Trustee.

PERSONAL PROPERTY:

Dining Table & 6 Chairs, Glass Front Hutch; Round Glass Curio Cabinet; Matching Sofa & Chair; Jewelry Cabinet; Full Bed; Twin Beds; 6 Drawer Chest; Dresser w/Mirror; End Tables, Coffee Table, Stands; (2) Lighted Cabinets; Nightstands; Rocker; 6 Piece Wicker Furniture Set; Melnik Safe; Hoover Windtunnel Sweeper; Bissel Sweeper; Carpet Cleaner; Small Kitchen Appliances; Kitchen Dishes & Pots & Pans; Bedding & Towels; Sewing Misc; Cookbooks; Pyrex, Depression, Corningware, Tupperware; Large Selection of Dolls & Stuffed Animals; Yarn & Knitting Items; Selection of Older Doilies & Linen; Small Amount of Jewelry; Doll Rockers; Pictures & Wall Décor; "Home Interior" Items; Mantel Clock; Wall Clock; Oil Lamp; 60's LP Albums; Small Hohner Accordion;

OUTSIDE ITEMS:

Toro Elec. Snow Shovel; Wheelbarrow; Stepladder; Lawn Chairs & Furniture; Lawn Hand Tools; Lady's Bike; Lawn Figurines; Few Hand Tools; File Cabinets; Ryobi Elec. Tools; Other Garage & Outside Items;

ESTATE OF WINOLA GOODWIN

TERMS & CONDITIONS MAY BE FOUND ON THE WEBSITE.

BRIAN HASTY

Auction Company

103 East County Line Rd.
Tekonsha, Michigan
517-741-4440
www.hastyauction.com



Burns Auctioneers

(4) JOHN PECK ONLINE AUCTIONS

MCCALLUM ONLINE MOVING AUCTION

Bidding Is Open & Closes Wed., June 23

SALE FEATURES:

Self Contained Pickup Camper, Tools, Household Furnishings, Lots Of Ammo. & Sporting Related Items. Located: West Branch, MI. Preview Is Welcome By Appointment. Mr. & Mrs. Harold McCallum, Owners. To View A Complete Detailed Listing With Hundreds Of Photo's Visit johnpeckauctions.com

KNOWLTON ONLINE ESTATE AUCTION

Bidding Is Open & Closes Sat., June 26

SALE FEATURES:

1941 Chevy Special Deluxe Coupe (Parade Ready), Lawn & Garden Equip., Lots Of Shop Tools, Firearms & Sporting Related, Antiques & Collectibles. Located: Tawas City, MI. Mrs. Betty Knowlton, Owner. Preview Is Welcome By Appointment. To View A Complete Detailed Listing With Hundreds Of Photo's Visit johnpeckauctions.com

MAYERS ONLINE MOVING AUCTION

Bidding Is Open & Closes Mon., June 28

SALE FEATURES:

Honda 4 Wheeler, Snow Blower, Firearms/Sporting & Clean Household Related. Located: Midland, MI. Mike & Brenda Mayers, Owners. Preview Is Welcome By Appointment. To View A Complete Detailed Listing With Hundreds Of Photo's Visit johnpeckauctions.com

REAL ESTATE & PERSONAL PROPERTY ONLINE AUCTION

Bidding Is Open & Closes Tue., June 29

SALE FEATURES:

Beautiful 3 Bedroom Home With 2 Car Attached Garage, Personal Property Includes; A Like New Hyundai Sante Fe SUV, Household Furnishings, Antiques, Collectibles, Tools & Misc. Items. Located: 11734 Baric Dr., Roscommon. Janette Taylor, Owner. John Peck, Auctioneers (989) 426-8061. To View A Complete Detailed Listing With Hundreds Of Photo's Visit johnpeckauctions.com

For More Info. Please Contact Us At: jpeck@johnpeckauctions.com OR To View A Complete Detailed Listing With Hundreds Of Photo's For All Our Upcoming Live & Online Auctions Visit: www.johnpeckauctions.com

JOHN PECK AUCTIONS LLC

Gladwin, MI (989) 426-8061



MOVING AUCTION

Saturday, June 26th, 2021 ♦ 10:00 a.m.

Located @ 5835 N. Cochran Road, Charlotte, MI 48813

Directions: 5 1/2 Miles North of Charlotte on Cochran Road.

VEHICLES & EQUIP.

- 1987 VW Jetta Car Diesel
- 1967 Ford Galaxie 500 Parts Car (no engine or title) & Many More Galaxie 500 Parts
- Trailer 7'x14' Drop Deck/Ramp
- 2-Turn 4-Wheeler
- 2010 Exmark Lazer Z 60" Deck 29 HP Motor
- 2006 Bombardier/Can Am Outlander Max 400 HO 4x4, 592 Miles/137 Hours
- 1986 Alcott Zuma 13' Sailboat - No Trailer

ANTIQUES & FURNITURE:

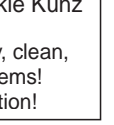
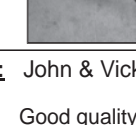
- Sleeper Sofa
- Love Seat
- Extra Large Ottoman
- (2) End Tables
- Lamps
- Howard Miller Grandfather Clock Model 610-950
- Romance Cuckoo Clock (made in Switzerland)
- Drexel Mahogany Bedroom Furniture: Full Bed Frame, 2 Night Stands, Dresser w/Mirror & Tall Chest
- 48" Round Oak Table w/3 Leaves, 7 Round Back Chairs, (purchased from Riverside Oak in 2008)
- Pots, Pans, Glasses, Silverware
- Keurig Coffee Maker
- Wine Glasses
- Wooden Bench
- Antique Side Board
- Antique Upholstered Chair
- Oak Picture Frames & Pictures
- Desk & Printer
- Filing Cabinets
- Bowflex Workout Machine
- 106" Shuffle Board
- Cutco Knives & Sharpener
- Sony 65" TV w/Sound Bar
- Hall Tree
- Lane Cedar Chest
- HUNTING:**
- 48 Gun Stack On Elite Safe with Electronic Lock
- Wood Gun Cabinet w/Glass Front
- Tree Stands
- Fiberglass Hunting Blind
- Wood Hunting Blind
- Shooting Bench
- (3) Deer Head Mounts
- Small Boat Trailer
- GUNS & AMMO:**
- Taurus Model 66 Revolver .357 Magnum
- Smith & Wesson Model 686-5 Revolver .357 Magnum
- Taurus Judge 3" Barrel 2 1/2" Chamber .410/.45 Long Colt
- Beretta 92FS M9 Edition (1 of 5000) 9mm
- New Smith & Wesson M & P 40-40 S & W
- Browning Buckmark w/Bull Barrel .22 Long Rifle

- Davis P380 .380 Auto
- EAA Witness Wonder Finish .40 S&W
- EAA Witness - Wonder Finish 10mm
- FN Five-Seven 5.7x28
- New FN FNX 45 Tactical .45 ACP
- New FN FNP9 9mm
- Glock 21 Gen 3 .45 ACP
- Savage 300 Model 99 w/Scope
- Daisey #25 BB Gun
- US Springfield Model 1898
- Sporterized 30-40 Krag
- Savage Model 110 (Bolt Action/Single Shot) .270 Winchester (3x9 Simmons Scope)
- Armalite AR 15 M15A2 M4 (Flat Top) 5.56mm
- Wards Westerfield Model 62 Pump .22 Long Rifle
- Davey Cricket .22 Long Rifle
- Winchester Model 62 (Pump) .22 Long Rifle
- Stevens Model 770 20 Gauge Pump
- Savage Model 93R17 (Bull Barrel) .17 HMR
- Marlin Model 60 Semi Auto .22LR
- Browning Bar MKII 7mm Remington Magnum
- Marlin 444SS .444 Marlin (Simmons 3 x 9 Scope)
- New Marlin 336W 30-30 Marlin Package w/Scope & Sling
- Browning A-Bolt Medallion 338 Winchester Magnum (Simmons 1.6x6 & Muzzle Break)
- Sturm Ruger Mini 14 Ranch Rifle .223 (Swift 2x7 Scope)
- Austin & Halleck Model 420 Muzzleloader .50 cal (Nickel Barrel & Nikon Omega 3x9 309 Primer)
- Austin & Halleck Model 420 Muzzleloader .50 cal (Blued Barrel & 309 Primer)
- CVA Kodiak Muzzleloader .45
- Way Hunting Radios
- Outgize Pel. 7.65 cal 1919-1924 Hand Gun Deutch Werk Ser. 157546
- Ammo: 5.7x28; 9mm Lugar; .22; .45 ACP; .357
- Sand Field Glass Square D Co. NY 7 x 50
- Nc Star G 24 x 50 Scope Range finder
- Leupold Vari XIII Tasco 3-9x40
- Nc Star Spotting Scope 30-90x90
- Morris Hand Made Knife 70110
- TOOLS:**
- Oxy/Acy Tanks w/Gauges
- Lincoln Arc Welder
- Dual Mig 171 Welder w/Argon Shielding Gas Tank
- Upright Air Compressor
- Tools Boxes & Tools
- Work Benches
- Vices

- Bench Grinder
- 12" Craftsman Radial Arm Saw
- 10" Table Saw
- Lots of T-Posts
- 5500 Watt Wen Generator
- 110 lb Anvil
- Welding Table
- (2) Craftsman Tool Chests
- 6 HP 30 Gal. Air Compressor
- Bench Grinder
- 3/4 Drive Socket Set
- Tap & Die
- Dry Wall Lift
- Reece Hitch Carrier
- Craftsman Router
- Bolt Cutters
- Appliance Cart
- Stihl FS85T Weed Whip w/Edger
- Craftsman Chainsaw
- McCulloch Chainsaw
- ANTIQUES:**
- Brace Drill & Bits Original Box
- Oil Lamp
- Coleman Lanterns
- JC Higgins
- Wood Pulley
- 1955 & 73 License Plates
- Gas Pump
- School Desk
- (2) Steel Wheels
- Cream Separator (Parts)
- Milk Can
- Hay Fork
- Maple Syrup Glass 3/4 Pint
- Carl Gearhart & Sons 372-J-11
- Radio
- Trapper Point Wool Blanket
- Toy Wood Blocks
- Abercrombie Fitch Co. Light
- German Beer Stein - Excellent Condition
- Stream Line Train Marx in Box
- Lionel 027 Outfit #1074 Triple Drive Wheel Train Set in Original Box
- Collector Dolls
- New 1991 Lenox Megan Doll in Box

YARD & MISC.

- 50 Tee Post (Like New)
- Gorilla Cart
- Yard Cart
- (2) Lawn Rollers
- New French Door
- Giant Women's & Men's Comfort Bike - Like New
- 1980's Schwinn LeTour 10 Speed
- Trampoline
- Craftsman Rototiller
- Power Washer
- Yardman Leaf Vacuum
- (2) Diamond Plate Side Tool Boxes
- Garden Disc
- (4) 2" x 8" x 20" Lumber
- C-Clamps
- Work Bench
- Brinkman Smoker



OWNER: John & Vickie Kunz

NOTE: Good quality, clean, & well maintained items! Don't miss this auction!

TERMS: Cash, Check, Visa, Mastercard or Discover with proper ID. 3% Buyers Fee is charged but will be waived for cash or check. Not responsible for accidents. Everything is sold as is where is. To view pictures: www.auctionexchange.com • I.D. #2699 or www.gotoauction.com #2112

PUBLIC AUCTION

True Old Time Farm Auction!

**SAT., JUNE 26, 2021
@ 10:00 AM**

LOCATION: 4197 W. 48th St.

DIRECTIONS: From Main St. in Fremont take 48th St. East approx. 3 mi. to sale site.

FREMONT, MI 49412

ZONE 4

Richard & Pat Marconi & Harry & Donna Stroven have commissioned Beyer Auction to sell their 4 Generation Harry Sr. & Keith Stroven Family Estate at Public Auction.

Items include horse-drawn buggy, horse drawn buck board wagon, horse-drawn sleigh, John Deere M tractor, 504 Farmall IH gas tractor, Blizzard 3 pt. snowblower, farm implements, assembled trailers, items from Greenwood Dairy, large selection of old farm primitives, 1930's visible hand crank gas pump, Mobile gas pump (2) Polaris 500 Quads, Antiques & Collectibles, Garage, tools, house hold furniture & furnishings, Many unusual & rare items plus much more.

AUCTIONEER'S NOTE: See our website for complete list & pictures @ www.beyerauction.com two rings all day. Celebrating 48 years of service.

TERMS: No out-of-state checks will be accepted. Cash or check with positive ID. Announcements take precedence over printed material. Not responsible for accident or loss. Lunch available.



(231) 854-1187 or (231) 750-2223
Hesperia, MI 49421
Beyer Auction/RE/MAX River Valley
8016 E. Garfield Road
Hesperia, MI 49421

Accepting Consignment Year Round.
3 Sale Barns Available For
Consignment Auctions.



expect
experience,
excellence,
excitement and
expertise at
The Auction EXchange

Rose Acre Farm Estate

AUCTION SALE

Saturday, June 26, 2021—10:00 A.M.

15033 6 Mile Road, Hersey, MI 49639

Directions: From Reed City take US-10 East 6.2 miles, turn left onto 155th Ave. go 1.9 miles, turn right onto 6 Mile Road 0.1 mile to sale site, watch for signs. This Auction has 2 Riding Lawn Mowers, several Tools, several Upright Tool Boxes, some Household Items.

OUTDOOR/SHOP RELATED

- Large Fuel Oil Tank
- Cub Cadet 2186 Shaft Drive with Snow Blower w/Chains
- Cub Cadet 3204 Shaft Drive
- Parts Washer
- Rubbermaid Lawn Cart
- 2 Steel Stools
- Several 6 Foot Pieces Steel Rebar
- 6 Foot Fiberglass Step Ladder
- Tomato Cages
- Garden Ride On Cart
- Gas Cans
- Small Wheel Barrow
- Charbroil Gas Grill
- Electric Smoke n Grill Smoker
- Shop Stand On Casters
- Propane Turkey Fryer
- Garden Hose
- General Air Refrigerator Air Dryer Fan Moving Cool Spot Cooling Systems
- Electric Single Wire
- Cart w/ Several Rolls Wire
- 5 Foot Wood Step Ladder
- C Clamps, Pipe Wrenches
- Aluminum Shop Cart
- Small Hatchet
- Several Plastic Containers
- 3 Sets of Shelving Steel Frame
- Lifetime 24" By 4 Foot
- 6 Gallons New Anti Freeze
- Glob Electric Meat Slicer
- 4 Ammo Boxes
- Box 16 D Sink
- Rolls of Fine Wire
- Several Bins of Misc. Nails
- Hardware
- 4 Craftsman Upright Tool Boxes

- Large Roll of Small Chain
- Boxes of O Rings
- Drill Doctor In Box
- Large Socket Set 2 3/8 Down
- Sockets, Socket Drive
- Several Machinist Drill Taps and Dies
- Several Pipe Cutters
- Misc. Air Tools
- Several Allen Wrenches All Sizes
- Several Ball Ping Hammers
- Several Drills
- Pipe Threaders
- Several Crescent Wrenches Large to Small
- Several Large Open End Wrenches
- 14 Small Meat Hooks
- Several Gauges
- Metal Micrometers
- Metal Punch Leather Set
- Small Roll 12-2 Wiring
- Electric Tools, Saws
- Round Folding Table
- Large Frigidaire Chest Freezer
- Tackle Box w/ Tackle
- 4-12 Foot 2 x 6 Pine Boards
- Metal Garbage Can
- Garden Hoses
- Small Shop Top Refrigerator
- Chicken Waters and Feeders
- 100 Gallon Rubbermaid Stock Tank
- Several Plastic Cut Half Barrels
- Homemade Chicken Plucker on Stand
- 8 Foot Single Axle Trailer w/ Sides
- Some Chicken Wire
- 5 Foot Single Axle Trailer
- Snow Fence
- Work Stand
- Several Binders of Farm Animal Care
- Extension Cords
- Several Books Storeys' Guide Beef Cattle,

- Chickens
- Gas Powered Transfer Pump
- Empire Propane Heater New
- Several 18", 24" Pipe Wrenches
- Shovels, Rakes, Sledge Hammers

HOUSEHOLD

- Old Milwaukee, The Wild Turkey Glass Picture
- Matching Couch, Chair, Loveseat
- Glass Front Entertainment Center
- 2 Bar Stools
- 6 Blue Plastic Children's Chairs
- Small Box Fan
- Eureka Victory Vacuum
- 2 End Tables
- 2 Lamps
- Cabinet w/ Dresser
- 2 Small Dresser Stands
- Desk, Swivel Leather Office Chair
- Coleman Thermos
- 2 Bed Frames w/ Head Board
- Paducah Popper, Popcorn Maker
- Coffee Table
- Gibson 10 Cubic Feet Chest Freezer
- Small Wicker Hamper
- 2 New Cushion Top Folding Chairs
- VHS Player, VHS Tapes
- DVD's
- Electric Knife Sharpener
- Proctor Coffee Maker
- Oster 10 Speed Blender
- Small Step Ladder
- Kitchen Table w/ Leaf 6 Chairs
- Several Cassette Tapes
- Camp Fire Popcorn Maker
- Hobo Maker
- GE Toaster Oven
- Pots, Pans, Silverware

Ryan Hanson Auctioneer

Terms and Conditions: Cash or good check with ID.
Nothing removed until settled for. Not responsible for accidents, lost or damaged items.
Verbal statements at time of sale take precedence over written document.

231-796-3784

Web Site: ryanhansonauction.com

For a complete list and pictures find us on gotoauction.com ID #1959

Food Wagon Available



THE BILL & SUSAN TRITTEN

PUBLIC AUCTION

SATURDAY, JUNE 26, 2021 @ 10:00 AM

3950 Fay Rd., CARLETON, MI 48117

ZONE 6



AUCTIONEER'S NOTE: The Tritten's are moving and have commissioned Rollo Juckette & Brad Neuhart Auctioneers to sell the following and more at public auction. This is a short sale, be on time. All items are clean, nice and sell with no reserve. Do not miss this auction.

DIRECTIONS: From Carleton, take Monroe St. to Maxwell, north on Maxwell to Carleton West Rd. Go west on Carleton West Rd. through Burns and Exeter Rd. turns and when Carleton West makes a sharp turn to the north go south west on Fay Rd. approx. 1/4 mi. to auction. Watch for signs. Possibly some off-road parking and parking on Fay.

JEEP & MILITARY VEHICLES: 2002 Jeep Wrangler - 98k mi., 6 cyl./Auto, 5.38 gears, Winch, Set up for climbing, Comes with Hard Top and Solid Doors & Convert. Top and 1/2 Doors. Very clean!; 1966 Ford MUT Jeep - UNCUT, 21k mi, Good MI title; 1966 Dodge Power Wagon WM300 - 11k mi, has Good IA title.

TRACTOR & EQUIPMENT: 2004 Kubota L3130 Tractor w/Loader - 4wd, 72" Belly Mower, ONLY 375 ONE OWNER HOURS; 8' Land Pride 3 pt. Blade; HD Trailer Log Splitter; 3 pt. Boom; 18.4x38 Tires; Several Front Tractor Wheels & Tires; Water Tank; Wagon on JD Running Gear; Aluminum Fuel Tank; Hyd. Cylinders; Utility Trailer; MORE. **ANTIQUES & ANTIQUE CLOCKS:** Birge, Peck & Co. 8-Day Empire Shelf Clock; Seth Thomas Ogee Clock; Haven Ogee Clock; Seth Thomas Mantel Clock; Waterbury Clock; Wooden Gear Wedding Clock; MORE 1800's Clocks; Clock Tools; Snowshoes; Several Ship Lanterns; (2) Van's Boot Saver Hangers; Several Hurricane Lamps; Lightening Rod Bulbs; NYC's Railroad Lanterns; Vintage Railroad Items; Barn Lanterns; Crocks; Coast Guard Boat Model; Wooden Boxes; Milk & Cream Cans; Corn Shellers incl. Table Mtd. Sheller; Buck Saws; Antique Stoves & Heaters; Anvil; Blacksmith Drill Press; Drop-Leaf Table; Wooden Carpenter Boxes & Tools; Wooden Ladders; Barn Door; Farm Toys; MORE. **TOOLS & LAWN/GARDEN:** Welding/Cutting Table; Oxy Acetylene Torch; Air Compressors; Router; Saws; Honda Powered Pressure Washer; Husqvarna 372 XPW Chainsaw; Husqvarna 365 Chain Saw; U-Haul Tow Bar; (2) Generators; Several Push Mowers; Sears LG Tractor; Alum. Come-alongs; Pressure Pot Sandblaster; Screw Jacks; New 13k lb. Winch; Toolboxes; MORE. **OTHER ITEMS OF INTEREST:** New ball bearing stage 1 Garrett turbocharger for 5.9 Cummins; Cabela's Montana Canvas 10x10 Tent w/Alum. Poles and Cook Tent; Cabela's Alacnack 12x12 Tent; Telescope w/Stand; Marcum Underwater Viewing System; Lg. Pile of Scrap Iron; Buckets of Bolts; Camping Oven; Coleman Lanterns; Other Camping Items; Cast-Iron Scalding Kettle; MORE.

SEE PICS & INFO AT: www.rolloandbrad.com

Rollo A. Juckette
Dundee, MI
(734) 529-2388



Brad Neuhart
Milan, MI
(734) 439-7939

www.rolloandbrad.com

TERMS: Auction company is NOT RESPONSIBLE for accidents. Auctioneers/Clerks assume NO liabilities or guarantees. Jeeps and Tractor payment must clear before removal. Statements made sale day take precedence over any other matter. See website for any other terms.

Slot Machines

FROM PAGE 7

automatically paid coins, trade checks or tokens. These first slot machines finally evolved into what are now called single wheel floor or counter model machines. The major manufacturers of these machines were Mills, Caille, Paupa, Hochriem, Schaal, Berger, Watling, Jennings, White and the Automatic Machine Company.

But give credit where credit is due. In 1895, Charles Fey invented his Liberty Bell, the backbone for today's three-reel slot machines. The mechanical workings and success of the three-wheel Liberty Bell caused it to be widely copied in the years to come.

Throughout the early 1930s, these single-wheel machines had predictable odds, since the entire wheel, much like a roulette wheel, was completely visible to the player. Most of these machines featured multiple coin heads, and a coin was bet on either a color or combination of colors, or a number or a combination of numbers. If the wheel stopped on the color, number or any one of the numbers or colors, then the machine automatically paid off a pre-determined number of coins.

Early machines were designed with cast-iron cases. World War I caused the switch to wood-sided cabinets, which reduced weight and manufacturing costs. Around 1920, cast-iron gave way to cast aluminum.

The biggest change in the slot machine occurred in 1927 when the jackpot was introduced and caught the immediate attention

of the player. Where previously a player had nothing more than a 20-cent payoff to try for, the potential rewards now became much greater.

The period from 1921 to 1941 is called the golden age of the slot machine. Machines of this era reached an aesthetic plateau that they would never again obtain. During this period more features and gimmicks were introduced. Skill stop buttons, mystery payoffs, gold awards and special bonus jackpots were a few of the features introduced.

Electricity made possible the console slot machine introduced in 1939 by the Mills Novelty Company. Bally Manufacturing Company, one of the leading slot machine manufacturers today, was the first company to design a successful countertop slot machine using electricity. Bally produced electric sensing contacts with high-speed coin payout mechanisms.

Jennings had the first post-World War II slot in 1945, the Bronze Chief, and its Super Deluxe Club Chief from 1946 was the first illuminated slot. Mills High Top nickel slots were fixtures in many a casino, as was the Mills Black Gold.

Another typical sight in a late-1940s and early-1950s casino was a carved wooden figure of a Western character, such as a miner holding a pan of gold. Made by sculptor Frank Polk, these characters had chests designed for a Pace or Mills slot machine. Only 92 of these unique pieces were made, making them one of the most collectible slot machines around.

Jennings was still a force in the 1950s with its



Above: This Bursting Cheery slot machine by Mills Novelty Company was produced in 1937, valued at \$2,500. It measures 15 by 16 inches and stands 24.5 inches tall. It is made from cast iron rather than aluminum.

Buckaroo, which glowed in the dark. By the 1960s, upstart Bally began to take over the business, thanks in part to its Money Honey in 1963. This machine could pay out hundreds of coins rather than just 20 or so. Eventually, Ballys made one that allowed customers to play up to five coins at once.

According to Saul, the 10 most sought-after slot machines are the 1941 Mills Diamond Front, Mills Hi-Top, Mills Bursting Cherry, 1938 Mills Roman Head 5-cent, 1946 Jennings Super Deluxe Club Chief, 1935 Watling Coin Front 25-cent, 1947 Mills Black Cherry 5-cent, 1933 Watling Treasury 5-cent, 1948 Mills Blue Bell 10-cent and 1950 Pace Four Reel Harrah's Club 10-cent.

Can you own a slot

machine? That depends on where you live. Ownership of slot machines of any kind are prohibited in Connecticut, Hawaii, Nebraska, South Carolina, and Tennessee.

Ownership of any type of slot machine is permitted in Alaska, Arkansas, Kentucky, Maine, Minnesota, Nevada, Ohio, Rhode Island, Texas, Utah, Virginia, and West Virginia.

Machines 25 years or older are permitted in Arizona, California, Delaware, Illinois, Iowa, Louisiana, Maryland, Michigan, Mississippi, Montana, New Hampshire, New Mexico, North Carolina, North Dakota, Oklahoma, Oregon, Pennsylvania, Washington, Wisconsin, and Wyoming.

Machines 20 years or



Above: \$3,300 is the asking price for this 1930s Jennings Little Duke 1-cent slot machine. Later models offered a gumball after each play. This machine included an unusual three-reel format, and they are concentric discs. The machine was designed by E.C. Bignell, a French manufacturer, who distributed Jennings machines. (photo submitted)

older are permitted in Florida while machines 30 and over are allowed in Massachusetts, Missouri, and New York.

In Colorado, machines before 1984 are legal while in Idaho, Kansas, and Georgia machines before 1950 are legal.

Right: Caille Bros. Manufacturing produced this 1904, 5-cent floor model slot machine housed in an oak cabinet. Players deposited nickels into their choice of seven-coin slots and pulled the level to spin the wheel and watch the ball bounce beneath the glass window. The color the ball lands on determines the payout. Estimate value of this machine is \$180,000 to \$250,000. (photo submitted)

Slot machine ownership is permitted in District of Columbia (before 1952) and Vermont (before 1954). In South Dakota and New Jersey, machines before 1941 are legal.

In Alabama, Class II machines are permitted.



ONLINE AUCTIONS

Bid and view articles now until closing
www.MerrittAuctionService.HiBid.com



Monday, June 21 ending at 6:00 PM

Articles featuring the Sonia Speakman estate plus added consignors. Antique & Modern furniture; Svl. Pcs Sterling Silver; 1925 Ignacio Gallo Art Deco Lamp; Oil Lamps; Ant. Dishes & Glassware's; Dolls; Wall Art; Garden Statues; Toys; (4) Cup & Saucers sets; Brass pcs; cast Iron; Stoneware; Graniteware; Advertising;(50) Hand Planes; Ammunition; & Much More being added Daily!

Monday, June 28 ending at 6:00 pm

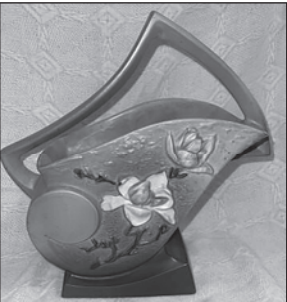
Look for great items to be determined.

Items are located for preview and pickup at our new auction facility located at 100 E. Coffren Ave, Greenville, MI 48838.

Merritt Auctions

Auction Manager Jamie Meyers
(616) 631-0027

www.MerrittAuctionService.HiBid.com



FLEA MARKETS • ANTIQUES
EDUCATION • WANTED
COLLECTIBLES • SERVICES
ANTIQUES SHOPS • SHOWS

CLASSIFIEDS

FLEA MARKETS • ANTIQUES
EDUCATION • WANTED
COLLECTIBLES • SERVICES
ANTIQUES SHOPS • SHOWS

ANTIQUES

DAVAL'S USED FURNITURE & ANTIQUES. 6 buildings with 15,000 sq ft of quality furniture, antiques and collectibles. SAVE TIME AND MONEY. SHOP DAVALS FOR THE BEST SELECTION, BEST QUALITY, BEST PRICE. YOU HAVE TO SEE IT TO BELIEVE IT. We are truly a destination place and worth the drive. WE BUY ESTATES. Layaway terms available. Visa/MasterCard/Discover accepted. 2 miles W. of Hastings at 2084 W M-43 Hwy near Bob's Gun & Tackle. Hours - Sun: 12-5; Mon-Thurs: 10-6; Fri: 10-8; Sat: 9-5. (269) 948-2463 S

SUNFIELD ANTIQUES, 196 Main St., Sunfield, MI 48890. Lots of great deals. We buy estates. Check us out on Facebook. Visa/MasterCard/Discover accepted. Hours: Fri. & Sat. 11-5, Sun. 12-5. 248-872-7277 (3021)

SERVICES

MIRROR RESILVERING: Quick Service. 313-521-1888. Frank Wright Glass, 14808 Gratiot. Detroit, MI 48205. Call for quotes. www.frankwrightglass.net S

WANTED

WANTED: Always buying rare antique motors. Outboard and inboard also early race boats. E-mail: bjoutboards@gmail.com 989-326-0727 B.J. Pawlaczyk S

WANTED: Corvettes wanted 1953 to 1967 any condition. Collections preferred. Email: terry@proteamcorvette.com Phone: 419-592-5086 (2130)

PHONE NUMBER:
888-339-3795

VENDORS

Free booth space available @ our annual antique advertising specialty show on March 19th, 2022. Located at the Indiana State Fairgrounds, Indianapolis. This is one of the largest markets for only 40+ year old advertising in the world. Signs, displays, clocks, and all other forms of vintage advertising.

For info: IAAshow.com
Contact: damongranger@gmail.com 5/22

STAY ALERT!
BE AWARE!
Auction
Advertising Is
Everywhere!

Feed Your Auction
Addiction With
The Auction
Exchange And
Collector's
News!®



Buying? Selling? Promoting?

TRY AN AUCTION EXCHANGE CLASSIFIED!

Classified ads are limited to Antique Shows & Shops, For Sale, Services, Education and Want Ads. • No auction ads or tag sales.

An Auction Exchange classified ad is only \$6.25 per week for up to 15 words and 25¢ for each additional word.

Please print legibly and include name, address or phone number & town as it will appear in print.

Name _____

Street _____ City _____

State _____ Zip _____ Phone _____

CLASSIFICATION: (i.e. Wanted , For Sale) _____ Please run my ad for _____ weeks.

YOUR AD, AS IT WILL APPEAR	_____	_____	_____	_____	_____
	_____	_____	_____	_____	_____
	_____	_____	_____	_____	\$6.25
	_____	_____	_____	_____	\$7.50
	_____	_____	_____	_____	\$8.75
	_____	_____	_____	_____	\$10.00
	_____	_____	_____	_____	\$11.00
	_____	_____	_____	_____	\$12.25
	_____	_____	_____	_____	
	_____	_____	_____	_____	

All classified ads must be pre-paid

Please send ad with check made payable to The Auction Exchange • PO Box 90 • Knightstown, IN 46148-0090

ALLEGAN ANTIQUE MARKET

Located at the Fairgrounds in Allegan, Michigan

Michigan's Largest Antique Show

JUNE 27
JULY 25
AUGUST 29
*SEPT. 25-26
Special 2-Day
Show

RAIN OR SHINE ~ 5 LARGE BUILDINGS
~ 200 Outside Dealers ~ Most Under Canopies
New Exhibitors Every Show
Shady Camping Areas
Picnic Areas ~ Food Services

Just a Short Drive into West Michigan
from Indiana, Ohio or Illinois.

LARRY WOOD
2030 Blueberry Dr. N.W., Grand Rapids, MI 49504
616-735-3333
www.alleganantiques.com



FREELAND

ANTIQUe MALL

5868 Midland Rd., Freeland, MI 48623

Thrifty Thursday Summer Flea &
Farmers Market Days

July 1, July 15, July 29, August 5 and August 19

FreelandAntiqueMall.com
989-573-8465

LIVINGSTON

ANTIQUe OUTLET

Annual Anniversary Sale
June 25-July 4
10% to 30% Off Storewide

Visit us at:
1825 N. Burkhart Rd., Howell, MI 48855
517-548-5399

Shipshewana
TradingPlace
est. 1922

Shipshewana Auction

ANTIQUe & MISCELLANEOUS AUCTION

Every Wednesday, Year-Round at 9:00 am EST



The items pictured above will sell in our June 23rd Antique & Misc. Auction

Preview consignments at AuctionZip.com! Auctioneer ID #1945

We have seller space available. Call (260) 768-4129 to consign items!

www.ShipshewanaTradingPlace.com • (260) 768-4129 • 345 S Van Buren St, Shipshewana, IN 46565

Duperon Trust

ESTATE AUCTION

SATURDAY, JUNE 26 @ 9:30 AM

LOCATION: 6205 BECKER ROAD.

DIRECTIONS: Exit I-75 @ M-81, go east 5-miles on M-81 to Portsmouth, north 3-miles to Becker then east ¼-mile to sale. From Reese go west 5-miles on M-81 to Knight Road, north 1½ miles on Knight to Becker then west 1½ miles.

SAGINAW (INDIANTOWN), MICHIGAN

ZONE 6

AUCTIONEER'S NOTE: Very good antique & collectible auction w/most articles in show condition. Held at a nice venue w/cover & shade.

AUCTION HIGHLIGHTS: (5) 12' x 20' wood sided custom built storage buildings designed to look like: General Store, Livery, Church & Parsonage (30-day removal) * Museum quality J.D. branded G.E. ref. * Museum quality Express children's wooden wagon * (3) Vintage metal children's wagons * Lg. Fairbanks & Morse dual wheel mill * (20) Stoneware crocks, churns & jugs to 10- gal. * (40) Glass qt. & pint milk bottles * (40) Vintage wooden wall & shelf clocks * (10) Vintage table to console radio * (10) Vintage phones from Candlestick to oak wall * (5) Milk & cream cans * (50) Medicine & pop bottles * (40) Firearms—25 are N.O.S. Daisy BB guns others are worth web search * Cincinnati wooden time recorder * Johnson Fare box * Schermack 5-cent stamp dispenser * Early 12 key wood/metal cash register/station * Art Stove Co. mini steel hatchet * Cincinnati initialing machine * 3x4 Metal Agric Fertilizer sign * Model Wooldridge Mfg. earth mover * Model Barber Green truck conveyor (3) 1970's Tonka dump trucks * 1940's Structo dump truck * (3) Outstanding wooden baby cradles * Gavord restored baby carriage (museum quality) * Beautiful 48" green enameled range * 5x3' double doored glass front bookcase * Hoosier brand kitchen cabinet * Freestanding oak churn * Blue tin churn * Clough & Warren pump organ * Communion boxes * Marble topped desk/dresser * Arts & Crafts style table * (3) 5' Church pews * 12x48" snowshoes * Eastlake single bed set * Clipper 4' sled * 4' Heavy aluminum gas station type pedestal * Brass candelabras * 42" Cowboy & Indian cigar store figurines * Preacher wife lifesize mannequin * Lg. spinning wheel * (12) piece husking, peg collection * (50) Piece shadowbox lock collection * Winchester framed bullet display (repro) * Bayonet, dagger, mil. style knife * Vertical paper roll dispenser/cutter * Wood handled wrench collection * Wooden beer boxes * Metal & cardboard kitchen spice collection * Qty. primitive farm equipment incl. (5) cast-iron sickle mowers, 2-bottom trailer plow on steel * (2) J.D. grain drills * (3) tons of scrap iron * Wooden & cardboard cigar box collection.

Please monitor website for additional
unique items to be listed & photos.

WEGNER AUCTIONEERS
(989) 793-8689
wegnerauctioneers.com

